

Not available as printed

Service Tools



Contents – Service tools

- A. Handtools, general purpose**
- B. Pressure testing tools**
- C. Ignition system**
- D. Carburettor, fuel pump**
- E. Starter device**
- F. Clutch, oil pump**
- G. Crankcase, crankshaft**
- H. Cylinder, piston**
- J. Vibration damping**
- K. Hydraulic system**
- L. Chains**
- M. Bevel gear**
- N. Tractors, riders**
- O. Workshop equipment**
- P. Lubricants, sealants**
- Q. Workshop manuals**



Service tools

A. Hand tools, general purpose



T-handle socket wrench
Socket, 8 mm
Part. No. 502 50 22-01



T-handle wrench, set
Allen key 3 mm
Allen key 4 mm
Allen key 5 mm
Allen key 6 mm
Socket 8 mm
Part. No. 504 90 00-06



Torx screwdriver, T20
Part. No. 502 51 67-01



Z allen key
4 mm, for restricted spaces
Part. No. 502 71 36-01



T-handle allen key
Allen key 5 mm
For all models
Part. No. 502 50 64-01



T-handle allen key
Allen key 6 mm
For all models
Part. No. 504 90 00-01



T-handle socket wrench
Socket 8 mm
For all models
Part. No. 505 38 13-08



T-handle socket wrench
 Socket 10 mm
 For all models
 Part. No. 502 50 23-01



T-handle allen key
 Allen key 3/16"
 For models: 61, 268, 272
 Part. No. 502 50 57-01



T-handle allen key
 Allen key 4 mm
 For all models
 Part. No. 502 50 18-01



Allen screwdriver
 3 mm
 For all models
 Part. No. 502 50 86-01



Allen screwdriver
 4 mm
 For all models
 Part. No. 502 50 87-01



T-handle allen key
 Allen key 3 mm
 For all models
 Part. No. 502 50 19-01



Allen screwdriver
 5 mm
 For all models
 Part. No. 502 50 88-01

B. Pressure testing tools



Spacer, cover (30 mm)
For models: 40, 45, 49, 51, 55
Part. No. 502 54 03-01



Cover, intake
For models: 281, 288
Part. No. 502 50 47-01



Pressure vacuum tester
For all models
Part. No. 531 03 06-23



Cover, intake
For model: 3120
Part. No. 502 71 38-01



Spark plug adapter
For all models
Part. No. 503 84 40-02



Cover, intake
For models: 362, 365
Part. No. 502 54 05-01



Rubber wedge
For models: General
Part. No. 502 54 11-02



Cover, intake
For models: 42, 242, 246, 250, 252, 265
Part. No. 502 50 72-01



Cover, intake and exhaust
For models: 40, 45, 51, 55
Part. No. 504 90 29-02



Cover, exhaust
For models: 51, 55, 385
Part. No. 502 54 02-01



Cover, intake
For model: 394
Part. No. 502 52 01-01



Cover, exhaust
For model: 3120
Part. No. 502 71 39-01



Cover, exhaust
For model: 288
Part. No. 502 50 81-01



Spacer (35 mm)
Existing carburettor screws can be used.
For models: 42, 242, 246, 254, 257, 262, 61, 268, 272, 281, 288, 250 R, 265
Part. No. 502 50 45-01



Cover, exhaust
For models: 42, 242, 246, 250, 265, 444
Part. No. 502 50 71-01



Spacer, intake (94 mm)
For model: 3120
Part. No. 502 71 40-01



Cover, exhaust
For models: 254, 257, 262, 268, 272
Part. No. 502 50 48-01



Cover, exhaust
For models: 333, 335,
Part. No. 502 52 31-01

C. Ignition system



Flywheel removal tool
For all models
Part. No. 504 91 08-03



Universal puller
Used with flywheel removal tool 502 51 49-01
For all models
Part. No. 502 50 26-01



Flywheel removal tool, kit
Part. No. 502 51 49-02



Spark plug lead pliers
For all models
Part. No. 502 50 06-01



Test wire kit
For: Tractors
Part. No. 532 15 08-34



Spark plug airgap tool, 0,5mm

For all models
Part. No. 502 51 91-01



Flywheel removal tool (coarse thread)

For all models
Part. No. 504 91 08-07



Ignition unit airgap tool, 0,3mm

For all models
Part. No. 502 51 34-02



Flywheel removal tool (fine thread)

For all models
Part. No. 502 51 94-01



Ignition unit airgap tool,

For model: 122 R
Part. No. 531 00 48-61



Test plug

For all models
Part. No. 502 71 13-01



Electrical terminal kit

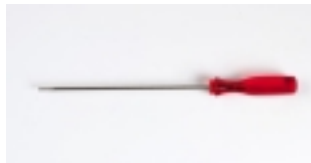
For all models
Part. No. 532 14 86-91

D. Carburettor, fuel system



Fuel line tool

For all models
Part. No. 502 50 83-01



Carburettor adjustment screwdriver

For model: 250 PS
Part. No. 502 42 04-01



Carburettor adjustment screwdriver

For all models
Part. No. 531 00 48-63



Limiter cap installation tool

For all models
Part. No. 530 03 11-60



Intake boot installation tool

For models: 340, 345, 350, 346XP, 351
Part. No. 502 54 17-01



Carburettor repair kit
For model:Walbro
Part No. 531 03 01-91



Level gauge
For model:Walbro
Part No. 531 03 01-92



Inlet seat coining tool
For model:Walbro
Part No. 531 03 02-42



Pressure testing gauge
For all models
Part No. 501 56 27-01



Single-stage limiter cap removal tool
For model:Walbro
Part No. 531 03 03-98



Two-stage limiter cap removal tool
For model:Walbro
Part No. 531 03 05-01



Limiter cap parts pack
For model:Walbro
Part No. 531 03 05-54



Single-stage limiter installation tool (two-cap)
For model:Walbro
Part No. 530 03 11-61



Single-seat limiter cap installation tool (one-cap)
For model:Walbro
Part No. 530 03 11-62

E. Starter device



Eyelet tool
For models: 136, 141
Part No. 531 03 00-52

F. Clutch, oil pump



Clutch spring installation tool

For clutches with long spiral spring.

Part. No. 502 50 49-01



Puller, clutch

For models: 340, 345, 350, 346, 351

Part. No. 502 54 16-01



Puller

For model: Horizont

Part. No. 531 01 96-76



Clutch removal tool

For models: 42, 242, 246

Part. No. 502 51 45-01



Clutch removal tool

For models: ~~340, 345, 351,~~ 346, 357, 359

Part. No. 502 52 22-02



Clutch removal tool

For models: 365, 371, 372, 385

Part. No. 502 52 22-01



Puller, oil pump drive wheel

For models: 51, 55, 42, 242, 246, 254, 257, 262

Part. No. 502 50 99-01



Clutch removal tool

For models: 122, 32, Mondo

Part. No. 531 00 48-62



Clutch drum removal tool

For models: 232, 225, 235, 250, 265, PS250

Part. No. 502 52 16-01



Puller, clutch

For models: 136, 141

Part. No. 530 03 11-12



Stop, sprocket, cutting head

For model: 325P

Part. No. 502 52 37-01



Puller, gear, oilpump

For models: 136, 141

Part. No. 530 03 11-36

G. Crankcase, crankshaft



Main bearing/seal mandrel
For model: 23 C
Part. No. 530 03 10-32



Crankcase seal removal tool, flywheel side
For models: 362, 365, 371, 372, 385, 340, 345, 350, 346, 351
Part. No. 502 50 55-01



Sealing ring mandrel
For model: 23 C
Part. No. 530 03 10-35



Crankcase seal removal tool, flywheel side
For models: 362, 365, 371, 372, 61, 268, 272, 244, 250, 252
Part. No. 504 91 40-01



Sealing ring mandrel
For models: 51, 55, 254, 257, 262
Part. No. 502 50 79-01



Sealing ring mandrel
For models: 42, 242, 288, 394, 3120, 250, 265
Part. No. 502 50 82-01



Crankcase seal removal tool
For models: 357, 359, 385
Part. No. 505 38 18-09



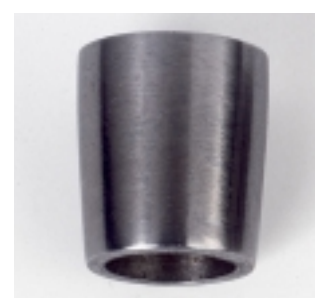
Sealing ring mandrel
For models: 250 PS, 32, 250, 252, 265, Mondo
Part. No. 504 91 28-00



Seal protector tool
For models: 288, 394, 3120
Part. No. 502 50 52-01



Crankcase splitter tool
For models: 51, 55, 254, 257, 261, 262, 61, 268, 271, 372, 371K, 281, 288, 385, 394, 395, 3120
Part. No. 502 51 61-01
For models: 42, 242, 246, 346, 351, 250, 252
Part. No. 502 52 36-01



Seal protector tool
For models: 42, 242, 250, 265
Part. No. 502 51 50-01



Seal protector tool

For models: 340, 345, 350, 346, 351

Part. No. 502 54 20-01



Crankshaft installation tool

For models: 254, 262, 51, 55

Part. No. 502 50 30-10



Seal protector tool

For models: 61, 66, 266, 268, 272

Part. No. 502 50 53-01



Crankshaft installation tool

For models: 40, 45, 51, 55

Part. No. 502 50 30-09



Seal protector tool

For models: 40, 45, 51, 55, 254, 257, 262

Part. No. 505 38 17-23



Crankshaft installation tool

For models: 281, 288

Part. No. 502 50 30-08



Crankshaft installation tool

For models: 365, 371, 372

Part. No. 502 50 30-15



Seal installation tool

For models: 61, 268, 272

Part. No. 502 51 69-01



Crankshaft installation tool

For models: 357, 359

Part. No. 502 50 30-16



Seal installation tool

For models: 40, 45, 51, 55, 362, 365, 371, 372, 375

Part. No. 502 52 20-01



Crankshaft installation tool

For models: 385

Part. No. 502 50 30-17



Crankshaft installation tool

For models: 61, 268, 272

Part. No. 502 50 30-04



Crankshaft installation tool

For models: 385, 40, 45, 51, 55

Part. No. 505 38 17-26



Crankshaft installation tool

For models: 346, 351

Part. No. 502 50 30-18



Seal installation tool
 For models: 362, 365, 371,
 372, 385
 Part. No. 502 52 21-01



Crankcase assembly tool
 For models: 346XP, 351,
 Part. No. 502 54 18-01



Puller for crankshaft bearing, flywheel side
 For model: 325HS
 Part. No 531 00 48-67

H. Cylinder, piston



Piston stop, metal (long)
 For models: > 80 cc.
 Part. No. 502 50 33-01



Piston ring installation clamp
 For models: 122 R
 Part. No. 531 00 48-65



Piston stop, metal (short)
 Part. No. 504 91 06-05



Piston stop, plastic
 For all models
 Part. No.r 502 54 15-01



Assembly kit, piston
 For all models
 Part. No. 502 50 70-01



Compression tester
 For all models
 Part. No. 531 03 16-86



Piston pin installation tool
 For all models
 Part. No. 505 38 17-05



Piston pin installation tool
 For model: 23C
 Part. No. 530 03 10-05

J. Vibration damping



AV spring removal tool
For models: 333, 334, 335,
338, 339
Part. No. 502 52 18-01



**AV rubber damper
removal tool, 11 mm**
For models: 61, 268, 272
Part. No. 502 50 67-01



AV spring removal tool
For models: 362, 365, 371,
372, 385
Part. No. 502 52 18-02



**AV rubber damper
removal tool, 14 mm**
For models: 136, 141, 42,
242, 246, 61, 268, 272, 250R
Part. No. 502 51 00-02



**AV rubber damper
removal tool, 18 mm**
For models: 61, 268, 272,
288, 394, 3120
Part. No. 502 50 66-02

K Hydraulic system



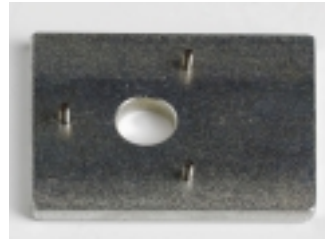
O-ring installation spacer
For model: 235P
Part. No. 502 52 26-01



Slip ring installation tool
For model: 235P
Part. No. 502 52 27-01



Hydraulic system pressure gauge
For model: 250PS
Part. No. 502 52 28-01



Hydraulic motor drive shaft removal tool
For model: 250PS
Part. No. 502 52 23-01



Pressure gauge adapter
For model: 235P
Part. No. 502 52 30-01



Hydraulic motor installation tool
For model: 250PS
Part. No. 502 42 50-01



Hydraulic oil circulation hose
For model: 250PS
Part. No. 502 42 45-01

L. Chains



Chain breaker tool
For: Chains
Part. No. 531 01 27-11



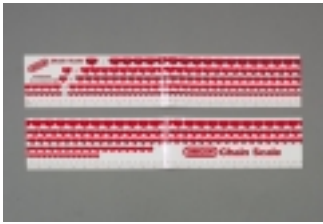
Grinding disc, 5mm,
For: Chains 3/8" and .404
Part. No. 508 23 26-60



Chain spinner tool
For: Chains
Part. No. 531 01 27-12



Grinding disc, 3mm,
For: Chains .325
Part. No. 508 23 26-59



Chain cutting guide
For: All chainsaws
Part No. 640 00 04-59

M. Bevel gear



Locking screw wrench
For models: 250, 252
Part. No. 502 51 11-01



Locking screw tool
For models: 250, 252
Part. No. 502 52 17-01



Locking screw wrench
For models: 265
Part. No. 502 51 68-01



Locking screw puller,
For models: 240, 245
Part. No. 502 50 65-01



Centering sleeve
For models: 250, 245, 252,
249
Part. No. 502 52 15-01

N. Tractors, riders



Claw spanner
For: Rider 850
Part. No. 506 56 71-01



Extended Allen key, 5/16"
For: Riders 1993 – 1994, Kawasaki engine
Part. No. 506 56 76-01



Pulley removal tool
For: Riders
Part. No. 506 89 92-01



Cutting unit service tool
For: RBH tractors
Part. No. 531 00 57-01



Extended Allen key, 3/8"
For: Riders
Part. No. 506 79 06-01



Control spring removal tool
For: Riders
Part. No. 506 89 93-01



Rear wheel puller
For: Riders
Part. No. 506 57 00-01



Pulley puller
For: Riders
Part. No. 506 66 48-01



Fitting drift, kit
1. Fitting drift, bushing out
2. Fitting drift, bushing in
For: Rider 13, 15, 16, 18 21 with transaxle K 46, K 62, K 66.
Part. No. 535 41 32-01



Cutting deck adjustment tool
For: Riders, tractors
Part. No. 531 03 03-57

O. Workshop equipment



Chain saw power head holder

For all models
Part. No. 502 51 02-01



Brushcutter/trimmer holder

For all models
Part. No. 502 51 03-01



Chain sharpening machine

For all models
Part. No. 508 23 26-53



Rev counter

For all models
Part. No. 502 71 14-01



Universal puller (crankshaft bearing)

For all models
Part. No. 504 90 90-02



Thread insert – for repairing threads in plastic/aluminium

For models: 340, 345, 346, 350, 351, 357, 359

Screw: MT6
Part. No. 503 27 40-01



Thread insert – for repairing threads in plastic/magnesium

For models: 340, 345, 346, 350, 351, 357, 359

Screw: PL5
Part. No. 503 27 39-01

P. Lubricants, sealants



Silicone sealant,

For all models
Part. No. 503 26 72-01



Active Cleaning detergent

Pack of 12 one-litre bottles.

Part. No. 505 69 85-70

Free Manuals Download Website

<http://myh66.com>

<http://usermanuals.us>

<http://www.somanuals.com>

<http://www.4manuals.cc>

<http://www.manual-lib.com>

<http://www.404manual.com>

<http://www.luxmanual.com>

<http://aubethermostatmanual.com>

Golf course search by state

<http://golfingnear.com>

Email search by domain

<http://emailbydomain.com>

Auto manuals search

<http://auto.somanuals.com>

TV manuals search

<http://tv.somanuals.com>