

# **iConnect Media Keyboard for Mac Notebooks**

**Model #IH-K231MS**

## **Product Knowledge Base**



### **Note: iPod/iPhone compatibility**

iPhone 3G – 8GB, 16GB  
iPod touch 2<sup>nd</sup> generation – 8GB, 16GB, 32GB  
iPod nano 4<sup>th</sup> generation (video) - 8GB, 16GB  
iPod classic – 120GB  
iPod touch 1<sup>st</sup> generation - 8GB, 16GB, 32GB  
iPod nano 3<sup>rd</sup> generation (video) – 4GB, 8GB  
iPod classic – 80GB, 160GB  
iPod nano 2<sup>nd</sup> generation (aluminium) – 2GB, 4GB, 8GB  
iPod 5th generation (video) – 30GB  
iPod nano 1st generation – 1GB, 2GB, 4GB

| device  | use insert |
|---|------------|
| iPod nano (1 <sup>st</sup> , 2 <sup>nd</sup> , 3 <sup>rd</sup> and 4 <sup>th</sup> generation)                                | 1          |
| iPod classic (80GB, 120GB)<br>iPod 5G (30 GB)<br>iPod touch, 1 <sup>st</sup> and 2 <sup>nd</sup> generation (8GB, 16GB, 32GB) | 2          |
| iPhone 3G<br>iPod classic (160GB)<br>iPod 5G (60GB, 80GB)   | 3          |

### **Frequently Asked Questions (FAQs)**

#### **1. What is included in the box?**

- iConnect media keyboard for Mac (USB).
- Inserts for iPod and iPhone (3).
- AC adapter.
- Installation CD.
- User manual
- Quick start guide

## 2. What are the system requirements?

### Mac

- OS X 10.5 or later.
- USB Port.
- CD-ROM Drive.

## 3. What are the Features?

- Charge & sync iPod or iPhone with iTunes.
- Control your media with illuminated touch sensitive keys.
- 2 rotating USB 2.0 ports provide reachable access for your digital devices.
- One touch function keys allow you to launch iTunes iChat Mail Safari iCal and Front Row instantly.
- Rubberized wrist rest

## 4. How to connect the Keyboard?

**Note:** Connect the AC Adapter first.

- Connect the USB cable to the USB port of the computer and the power connector to the AC adaptor and start using the keyboard.

**WARNING:** AC Adapter must be connected all the time when using the keyboard.

## 5. How to install the software?

- Insert the **installation CD**.
- Double click on **iHome keyboard icon**. The installation software will open.
- When Welcome screen displays, Click **Continue**.
- Click **Install** to install drive in default location.
- Type your password if asked to do so.
- When prompted, click **Continue Installation**.
- Click **Continue** again.
- Click **Restart** to restart your computer.

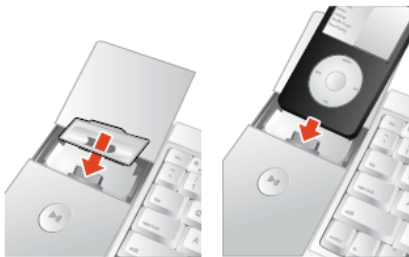
## 6. How to dock iPod or iPhone?

**WARNING:** AC Adapter must be connected all the time when using the keyboard.

- 1) Gently slide the dock cover forward.



- 2) Select the correct insert and insert your iPod or iPhone



## 7. Where can I find warranty information?

Visit [www.life-works.com/warranty](http://www.life-works.com/warranty)

### **Troubleshooting**

#### 1. My iPod/iPhone does not charge or sync.

- Ensure AC adapter is connected.
- Ensure USB cable is connected.
- Ensure device is seated correctly.
- Ensure iTunes is open.

#### 2. My keyboard or USB ports do not work.

- Ensure USB cable is connected.
- Ensure AC adapter is connected.
- Connect keyboard to a USB port on the computer, not to a USB hub.

### **3. Mac application keys do not launch.**

- Uninstall and Reinstall the driver.
- Ensure your program is in the application folder.

### **Product operating tips**

- If you want to use your ipod or iphone, gently slide the dock cover forward and then insert your iPod or iPhone.
- For a snug fit, use one of the three inserts before docking your iPod or iphone (see compatibility chart above).
- Slide finger across volume control to adjust volume—left to lower, right to increase.
- To go from minimum to maximum volume or back again, swipe four times.
- Please see your get started guide for instructions on how to use the special function keys.

**WARNING:** keyboard must be connected to AC adapter at all times when in use.

### **Technical Support**

For questions regarding your iHome computer accessory, please visit our website at [www.life-works.com](http://www.life-works.com) or call **1-877-Life-540/ 1-877-543-3540**.

2009 © LifeWorks Technology Group LLC.

iHome™ is a trademark of SDI Technologies Inc. used under license.

Mac® is a trademark of Apple Inc., registered in the U.S. and other countries.

All other brands and logos are trademarks of their respective companies.

## Free Manuals Download Website

<http://myh66.com>

<http://usermanuals.us>

<http://www.somanuals.com>

<http://www.4manuals.cc>

<http://www.manual-lib.com>

<http://www.404manual.com>

<http://www.luxmanual.com>

<http://aubethermostatmanual.com>

Golf course search by state

<http://golfingnear.com>

Email search by domain

<http://emailbydomain.com>

Auto manuals search

<http://auto.somanuals.com>

TV manuals search

<http://tv.somanuals.com>