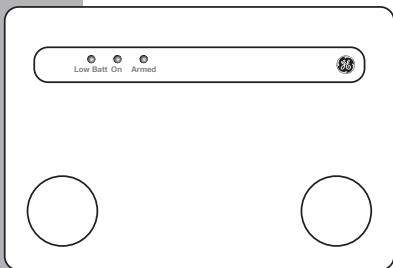




Wireless Alarm System

Alarm Siren

User's Manual



Control all Sensors

& accessories from

Download from www.Somanuals.com. All Manuals Search And Download from one location

Table of Contents

Important Safeguards	4
Introduction	4
Assigning a Alarm Siren to the system	5-6
Installation	6
Testing the Alarm Siren or your system	6
Erasing Alarm Siren from system	7
Low battery indicator	8
Battery warnings	8
FCC Warning	10

Before connecting or operating the Alarm Siren, please read these instructions carefully and save this manual for future reference.

Congratulations

The GE Choice Alert™ Wireless Alarm System is one of the most affordable and expandable wireless alarm systems available. You'll discover the system offers many features typically found in custom installed Alarm systems.

The Choice Alert system is reliable and easy-to-use. With Choice Alert you can select from a line of Sensors and Accessories; start small and expand as you need, or create a system that meets all your needs. The Choice Alert System is protected by Priority Code Selection technology which provides increased security and trouble-free wireless connections. It also guarantees the Control Center will only respond to signals from your Sensors in and around your home, and prevents anyone from tampering with your system.

The user manual explains in simple steps how to install, use and care for your new Choice Alert Alarm Siren.

If you have any questions or would like additional information please visit our web site www.jascopeproducts.com, or contact our Customer Service Group at 1-800-654-8483.

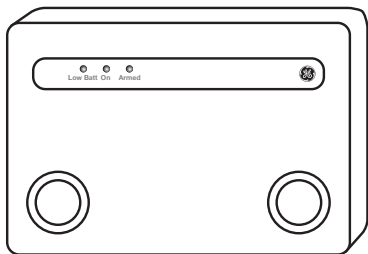
Important safeguards

Pre Cautions

- 1.** Do not attempt to disassemble the Alarm Siren, unless described in the user's manual. There are no user serviceable parts.
- 2.** Handle with Care – Avoid striking or shaking. Improper use or storage could damage the Alarm Siren. Modifying or tampering the device or its internal components can cause a malfunction and void the Alarm Siren's warranty.
- 3.** If you feel the Alarm Siren or any part of the Choice Alert system is not operating correctly or as described, please contact Customer Service for assistance **(1-800-654-8483)**.

Parts Check List

Identify all the parts before proceeding.



Alarm Siren

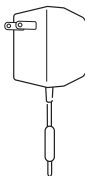
2 - Screws



2 - Plastic anchors



AC Adapter



The Alarm Siren will increase your system's sound. Use in areas where the Control Center's siren cannot be heard.

Adding a Alarm Siren

In order to link the Alarm Siren to the Control Center, you will need to have the Alarm Siren and Control Center near each other

Step 1 - Remove cover on bottom of the Alarm Siren. Plug in the AC adapter. Insert the antenna and slide mode switch to the 'ON' position.

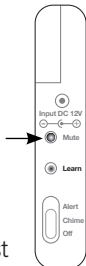


Plug-in for Antenna Adapter

Plug-in for AC Adapter

Step 2 - Press and hold the Learn button inside the Alarm Siren. The 'ON' indicator on the front will begin to flash and it will sound continuous beeps.

Step 3 - While continuing to press the Learn button on the Alarm Siren, **press and hold the Mute button on the side of the Control Center for three seconds.** The Control Center will send a test signal to the Alarm Siren. When the Alarm Siren receives the test signal it will sound a long tone and the 'ON' indicator will stop flashing.



Step 4 - Release all buttons

This indicates the Alarm Siren has been linked with the Control Center. Replace cover to Alarm Siren.

Test the Alarm Siren

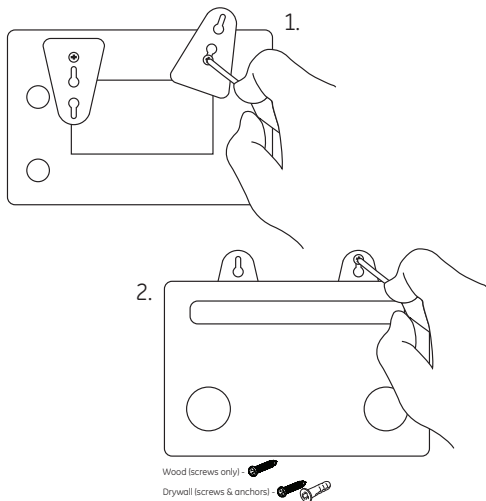
Step 1 - After the Alarm Siren has been successfully linked with the Control Center press and hold the Mute button on the Control Center for three seconds.

Step 2 - When the Alarm Siren receives the test signal from the Control Center, one LED indicator on the Alarm Siren will begin to flash. It will continue to flash for 30 seconds. This indicates it has received the test signal.

Installation

Turn the Alarm Siren over and adjust the triangle hang tags as shown in diagram (1). After you have turned the triangle hang tags into the correct position, now you are ready to install. Find the place that you would like to hang the Alarm Siren. Use the screws included for

wood, or the screws and anchors included for drywall mounting, as shown in diagram (2).



Erasing the Alarm Siren from the system

Step 1 - Remove the AC Adapter and battery from the Alarm Siren.

Step 2 - With the AC Adapter and battery removed, press and hold the Learn button.

Step 3 - While pressing the Learn button, re-install AC Adapter. The LEDs will flash rapidly and the Alarm Siren will sound beeps. This indicates the Alarm Siren has been removed from the system.

Step 4 - Release all buttons

Low Battery Indicator

The Alarm Siren offers battery back-up using a "9V" battery. Remove screws marked with arrows on back and attach battery to tab according to polarity markings. When the battery voltage reaches a low level, the "Low battery" LED indicator on the front will begin to flash until battery is replaced. If the battery is not installed the "Low battery" LED indicator will remain on.

Model #	Description	Battery Type	Battery Life*
45129	Control Center	(4) "AAA"	24 months
45136	Alarm Siren	(1) "9V"	24 months

*maximum potential life based upon usage and location

WARNING!

Risk of personal injury

- Prolonged exposure to alarm siren may cause permanent hearing loss

Battery Warning!

- Remove battery before storing the Alarm or Sensor for extended periods
- Battery may leak harmful liquids or ignitable materials or explode causing injury and product damage
- Do not mix old and new or other battery types
- Replace fully discharged battery immediately

CAUTION!

- Do not mount in wet locations
- Do not run Adapter cable through wall

FCC Warning

Any unauthorized changes or modifications to the equipment would void the user's warranty and may conflict with both state and federal laws. The Choice Alert system complies with part 15 of the FCC rules. Operation is subject to the following conditions:

- 1) The Choice Alert system may not cause harmful interference.
- 2) The Choice Alert system may accept any interference received including interference that may cause undesired operation.

NOTE: This equipment has been tested and found to comply with the limits for a Class B digital device, pursuant to Part 15 of the FCC Rules. These limits are designed to provide reasonable protection against harmful interference in a residential installation. This equipment generates, uses and can radiate radio frequency energy and, if not installed and used in accordance with the instructions, may cause harmful interference to radio communications. However, there is no guarantee that interference will not occur in a particular installation. If this equipment does cause harmful interference to radio or television reception, which can be determined by turning the equipment off and on, the user is encouraged to try to correct the interference by one or more of the following measures:

- Reorient or relocate the receiving antenna.
- Increase the separation between the equipment and receiver.
- Connect the equipment into an outlet on a circuit different from that to which the receiver is connected.
- Consult the dealer or an experienced radio/TV technician for help

WARNING

Limitations of Alarm Products

This product should be tested periodically to make sure it is working properly. The product, if used properly, may reduce the risk of burglary, robbery, or other adverse events. However, JASCO is not an insurer, this product is neither insurance nor a guarantee that such an event will be prevented, and users should protect themselves with proper insurance. JASCO makes no representation that this product cannot be compromised or circumvented, that it will provide an adequate warning, or that it will prevent any personal injuries, property damage, or other losses. Like any alarm product, including expensive commercial systems, it may be bypassed, it is subject to compromise, and it may fail to warn for a variety of reasons, including, but not limited to: improper installation or positioning; improper maintenance; tampering; dead or improperly installed batteries; sensing limitations; component failures; receivers; intrusions may be outside of a product's designed range and certain environmental conditions may impact performance and audible alarm signals may be outside of hearing range, muted by doors, walls, and floors, unheard by deep sleepers or the hearing-impaired, or overwhelmed by other sounds.



is a trademark of the General Electric Company and is used under license to Jasco Products Company LLC, 10 E. Memorial Road, Oklahoma City, OK 73114.

This Jasco product comes with a 1 year limited warranty. Visit

www.jascoproducts.com for details. Search And Down

45136-1

01/09/08

Free Manuals Download Website

<http://myh66.com>

<http://usermanuals.us>

<http://www.somanuals.com>

<http://www.4manuals.cc>

<http://www.manual-lib.com>

<http://www.404manual.com>

<http://www.luxmanual.com>

<http://aubethermostatmanual.com>

Golf course search by state

<http://golfingnear.com>

Email search by domain

<http://emailbydomain.com>

Auto manuals search

<http://auto.somanuals.com>

TV manuals search

<http://tv.somanuals.com>