

Using Smart Copy

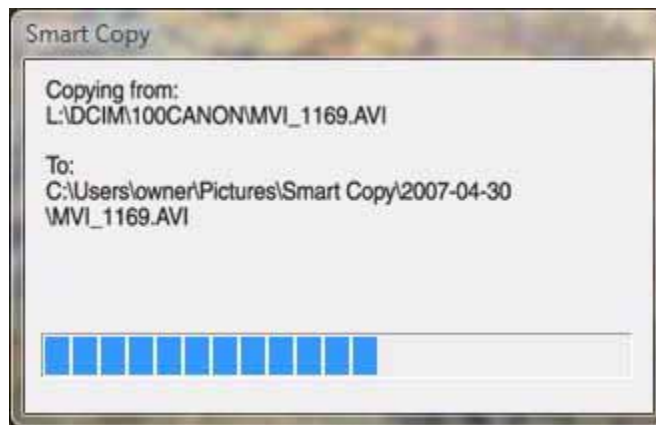
Your memory card reader includes a Copy button that makes it easy to copy pictures, movies, and data files from a memory card to your computer.

► **To use Smart Copy:**

- 1 Insert the memory card into the appropriate slot in the memory card reader.



- 2 Press and hold the **Copy** button until the *Smart Copy* dialog box opens and your computer starts copying the files. It may take a few seconds for the *Smart Copy* dialog box to open.



- 3 Release the **Copy** button.

By default, if you are copying picture files, Smart Copy creates a folder using the date the pictures were taken as its name and places it in the **Pictures\SmartCopy** folder on your computer's hard drive. Smart Copy then copies the picture files into that folder.

Also by default, if you are copying other types of files, Smart Copy copies them into the **Pictures\SmartCopy** folder on your computer's hard drive.

✓ **Important**

During this copy process, no files are deleted from the memory card.

If a file name already exists in the folder, the new file will have a number added to the file name. The first number will be 1 and the next number will be 2 and so on.

- 4 When the *Smart Copy* dialog box closes, remove the memory card.

© 2008 Gateway, Inc. All rights reserved. Gateway and eMachines are trademarks or registered trademarks of Gateway, Inc. in the United States and other countries. All other brands and product names are trademarks or registered trademarks of their respective companies.

MAN GERSH3 MCR COPY BTN UPD R0 5/08



8513154



8 27103 15091 9

Free Manuals Download Website

<http://myh66.com>

<http://usermanuals.us>

<http://www.somanuals.com>

<http://www.4manuals.cc>

<http://www.manual-lib.com>

<http://www.404manual.com>

<http://www.luxmanual.com>

<http://aubethermostatmanual.com>

Golf course search by state

<http://golfingnear.com>

Email search by domain

<http://emailbydomain.com>

Auto manuals search

<http://auto.somanuals.com>

TV manuals search

<http://tv.somanuals.com>