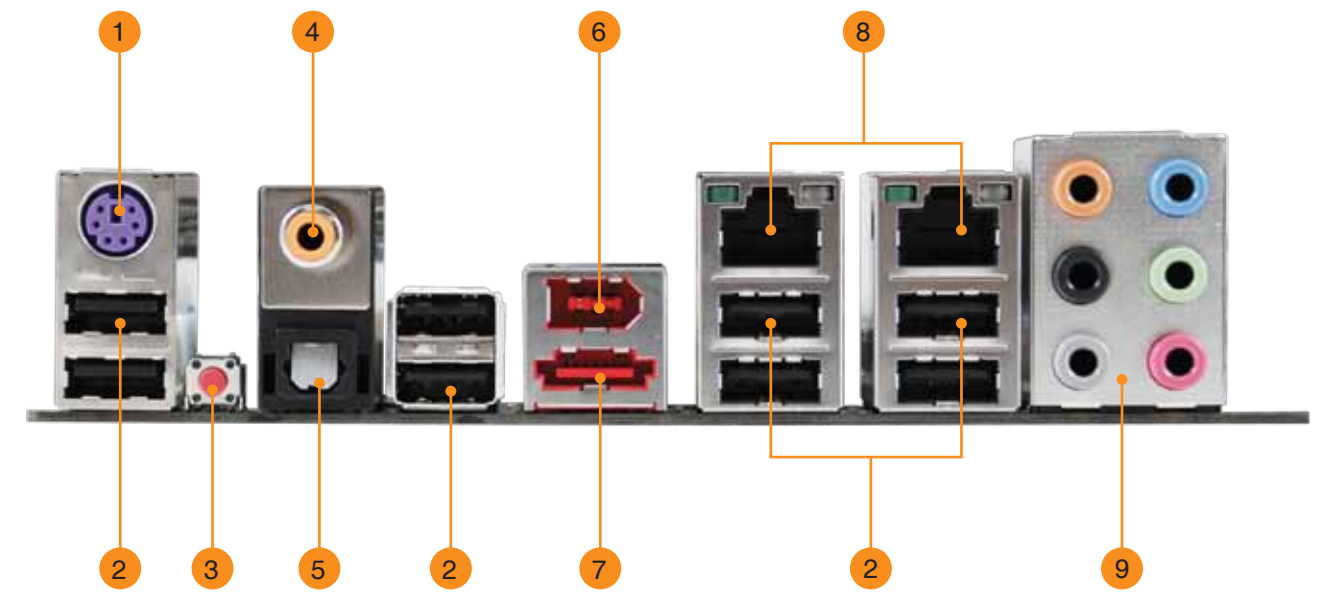
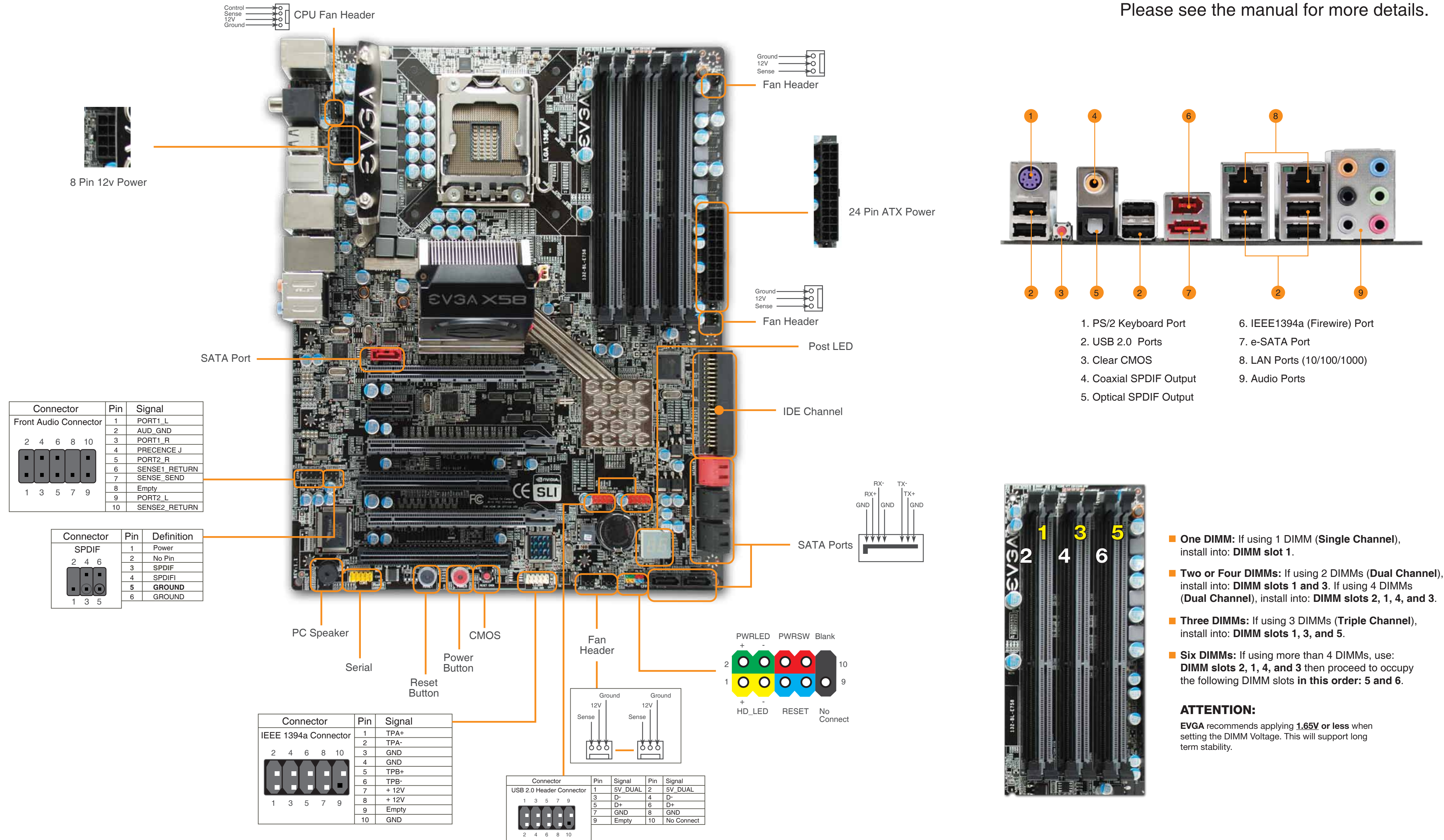


EVGA X58 SLI™ VISUAL GUIDE

Please see the manual for more details.



1. PS/2 Keyboard Port
2. USB 2.0 Ports
3. Clear CMOS
4. Coaxial SPDIF Output
5. Optical SPDIF Output
6. IEEE1394a (Firewire) Port
7. e-SATA Port
8. LAN Ports (10/100/1000)
9. Audio Ports



- **One DIMM:** If using 1 DIMM (Single Channel), install into: **DIMM slot 1.**
- **Two or Four DIMMs:** If using 2 DIMMs (Dual Channel), install into: **DIMM slots 1 and 3.** If using 4 DIMMs (Dual Channel), install into: **DIMM slots 2, 1, 4, and 3.**
- **Three DIMMs:** If using 3 DIMMs (Triple Channel), install into: **DIMM slots 1, 3, and 5.**
- **Six DIMMs:** If using more than 4 DIMMs, use: **DIMM slots 2, 1, 4, and 3** then proceed to occupy the following DIMM slots in this order: **5 and 6.**

ATTENTION:
EVGA recommends applying **1.65V or less** when setting the DIMM Voltage. This will support long term stability.

EVGA Premium Services

Advanced RMA
Stepping-Up Your Customer Service

Limited Lifetime Warranty
upon product registration

EVGA **90 DAY STEP-UP PROGRAM**



ELEET
EVGA ADVANCED MOTHERBOARD TUNING

EVGA Support

Thank you for purchasing an EVGA product. Please remember to register your product at: www.evga.com/register

For the latest drivers and updates for your product please visit: www.evga.com/support/drivers

To visit and search our knowledge base and product FAQ please visit: www.evga.com/FAQ

To visit the EVGA community message boards please visit: forums.evga.com

For more information about these services as well as our terms and conditions please visit www.evga.com

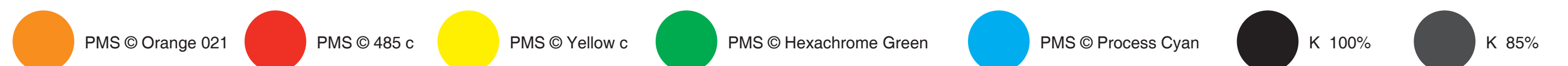


24/7 SUPPORT
888 · 881 · EVGA
*24/7 North America only
www.evga.com/24-7

EVGA Corp. 2900 Saturn Street, Suite B Brea, CA 92821

Color info : CMYK

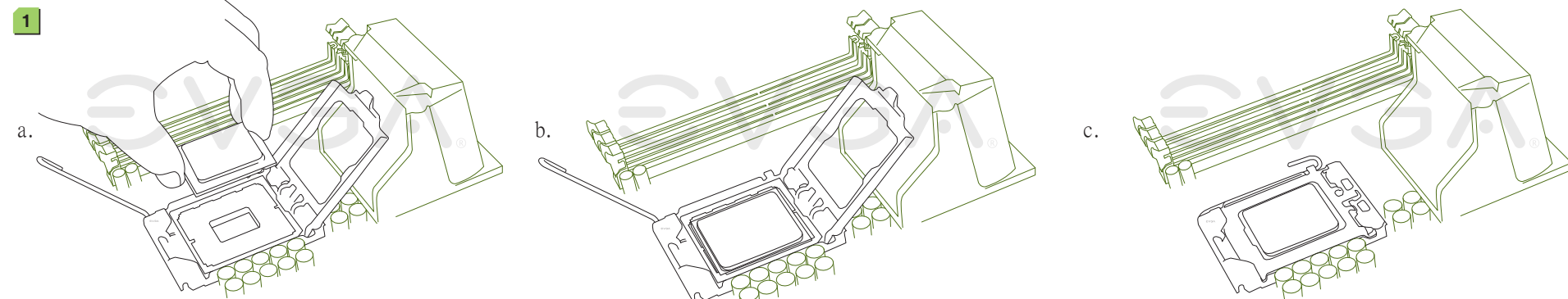
Please match colors to:



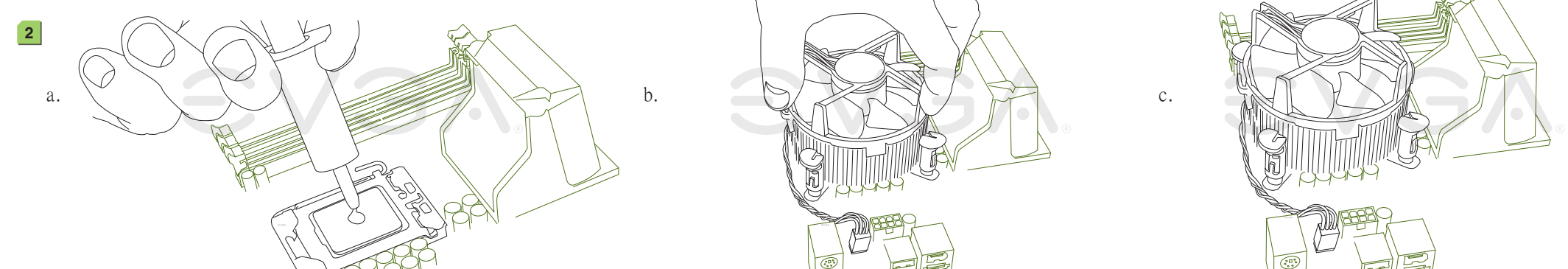
EVGA X58 SLI™ VISUAL GUIDE

The following quick steps will guide you through testing the absolute bare minimum essentials of your motherboard before installing it into a system chassis. Visual aids are provided to assist you during the following procedures.

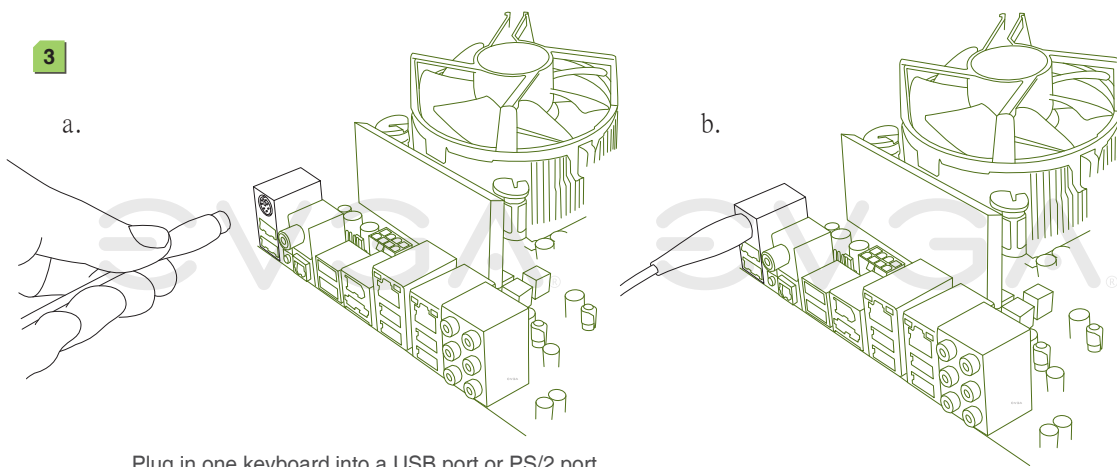
To reduce the risk of fire, electric shock, and injury always follow basic safety precautions. It is recommended that you use electrostatic discharge (ESD) countermeasures such as an ESD wrist strap or anti-static mat when handling computer components. After removing the EVGA X58 SLI™ from its packaging, place it on to a nonconductive surface. For example: wood, cardboard box, or an anti-static mat.



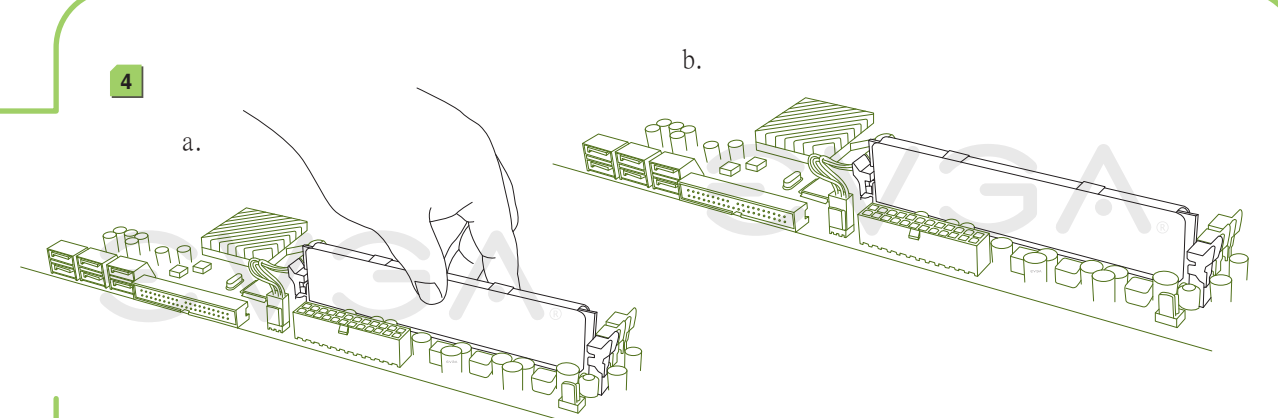
1. Unhook the socket lever and lift up the load plate. Remove the 1366 protective cover and carefully install your Intel processor making sure to properly align the notches. Close the load plate and with light pressure, lower the socket lever back in to its original position.



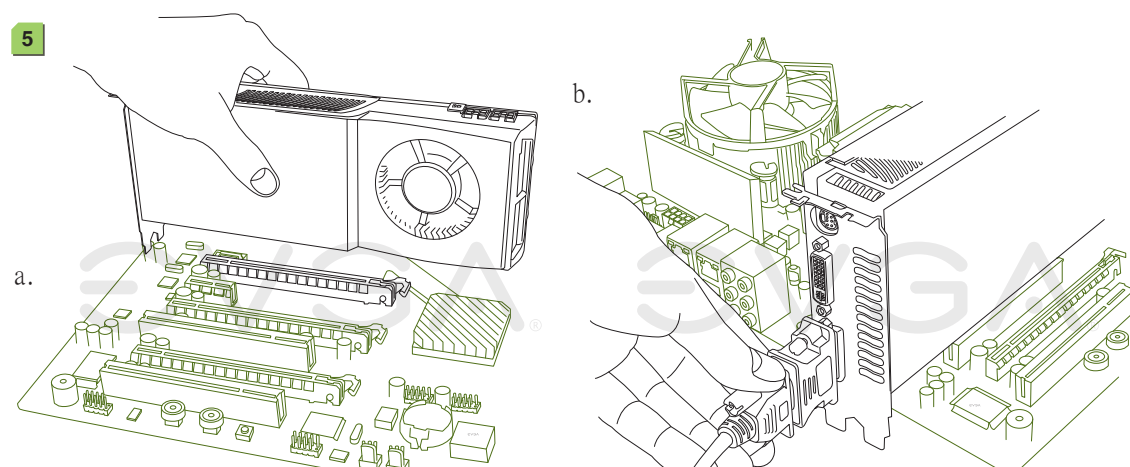
2. Apply a small, pea-sized drop of thermal paste on to the middle of the processor. Install your processor heatsink and fan.



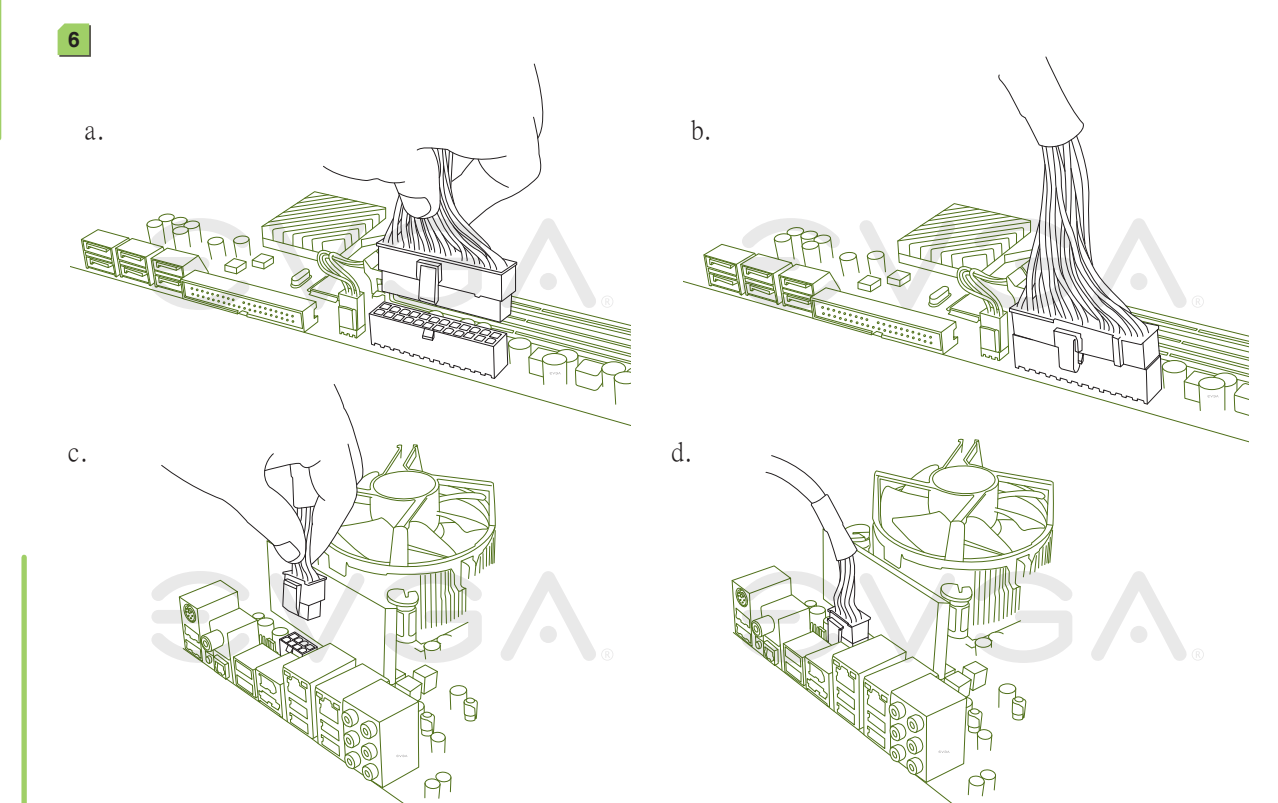
3. Plug in one keyboard into a USB port or PS/2 port.



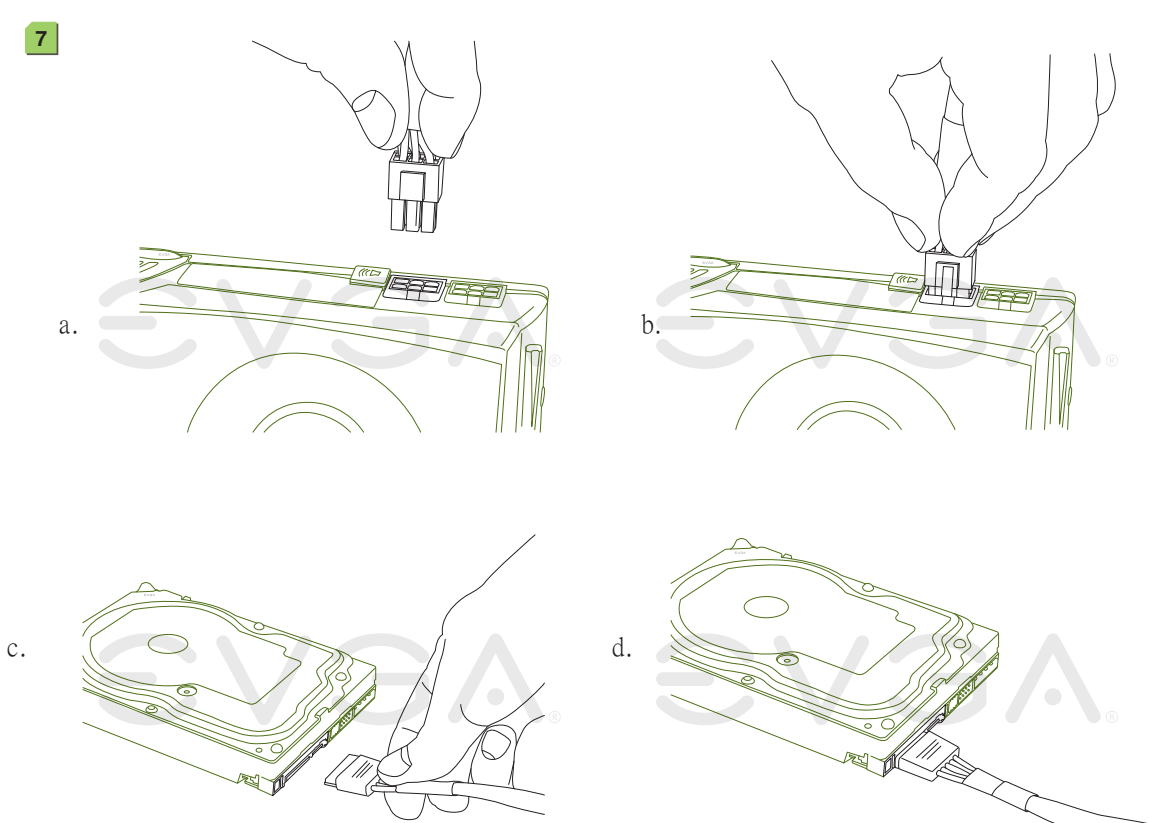
4. Install one stick of system memory (DIMM) into the appropriate DIMM slot (see other side).



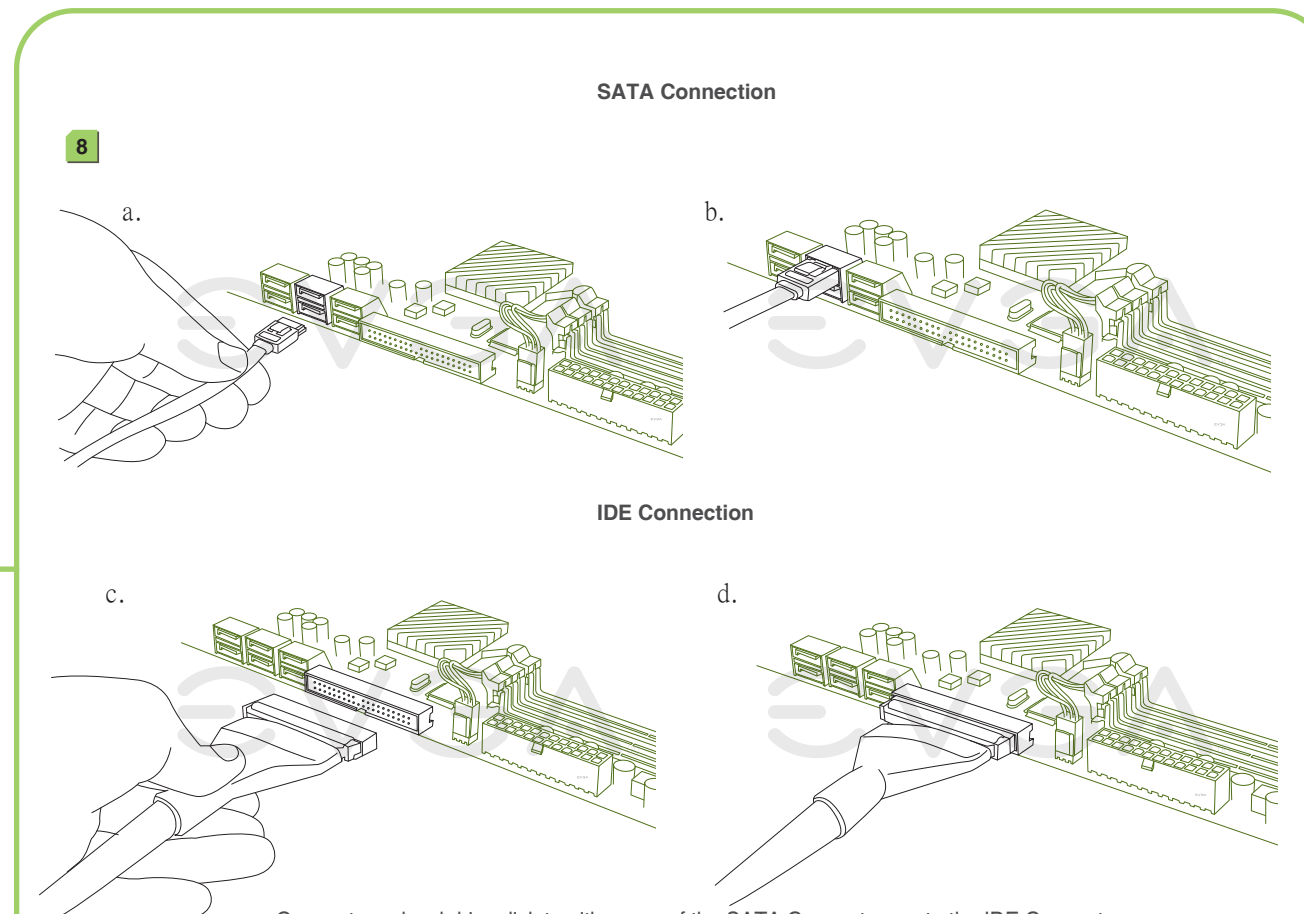
5. Insert your graphics card into either the PCI-E 2.0 slot or the PCI slot. The type of slot depends on the graphic card bus type. Connect a monitor to the output connector of the graphics card.



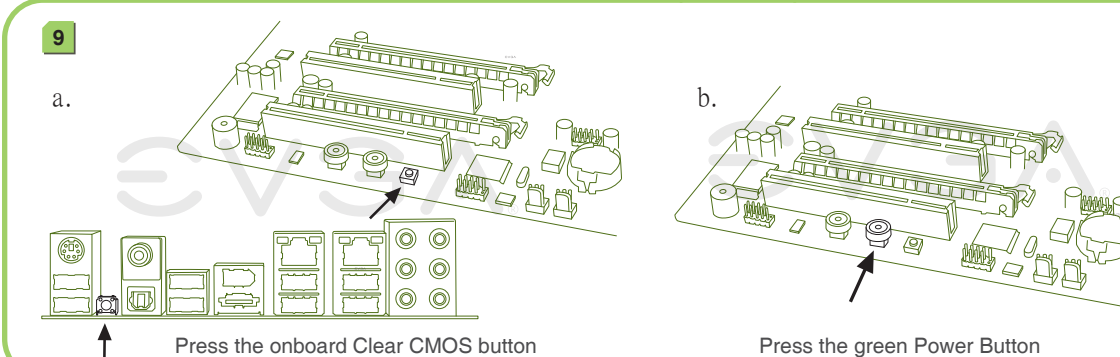
6. Make sure your power supply's power switch is in the OFF position then connect your 24-Pin ATX Power Connector and 8-Pin CPU Power Connector to the motherboard.



7. Plug in power connectors to both the graphics card and the hard disk drive. Power connector types will vary depending on the hard disk drive and graphic card's power requirements.



8. Connect one hard drive disk to either one of the SATA Connectors or to the IDE Connector depending on the hard disk drive connection type.



9. Press the onboard Clear CMOS button

Press the green Power Button

On the power supply, flip the power switch to the ON position. LEDs will now be lit on the motherboard. Press the onboard Clear CMOS button once then press the green Power Button to begin powering up the system.

At this final stage, you should now be greeted with the POST screen on your monitor.

Color info : CMYK

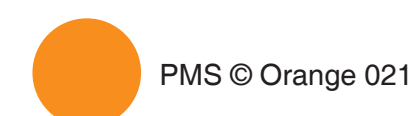
Please match colors to:



PMS © 371



PMS © 375



PMS © Orange 021



K 100%



K 85%

Free Manuals Download Website

<http://myh66.com>

<http://usermanuals.us>

<http://www.somanuals.com>

<http://www.4manuals.cc>

<http://www.manual-lib.com>

<http://www.404manual.com>

<http://www.luxmanual.com>

<http://aubethermostatmanual.com>

Golf course search by state

<http://golfingnear.com>

Email search by domain

<http://emailbydomain.com>

Auto manuals search

<http://auto.somanuals.com>

TV manuals search

<http://tv.somanuals.com>