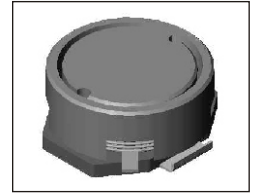


SMT Power Inductor

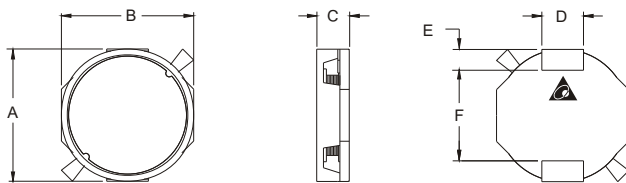
SIWC1355 Type

Features

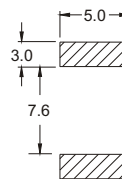
- RoHS compliant.
- Low profile (5.8mm max. height) SMD type.
- Magnetically shielded, suitable for high density mounting.
- High energy storage and low DCR.
- Provided with embossed carrier tape packing.
- Ideal for power source circuits, DC-DC converter, DC-AC inverters inductor application.
- In addition to the standard versions shown here, customized inductors are available to meet your exact requirements.



Mechanical Dimension:



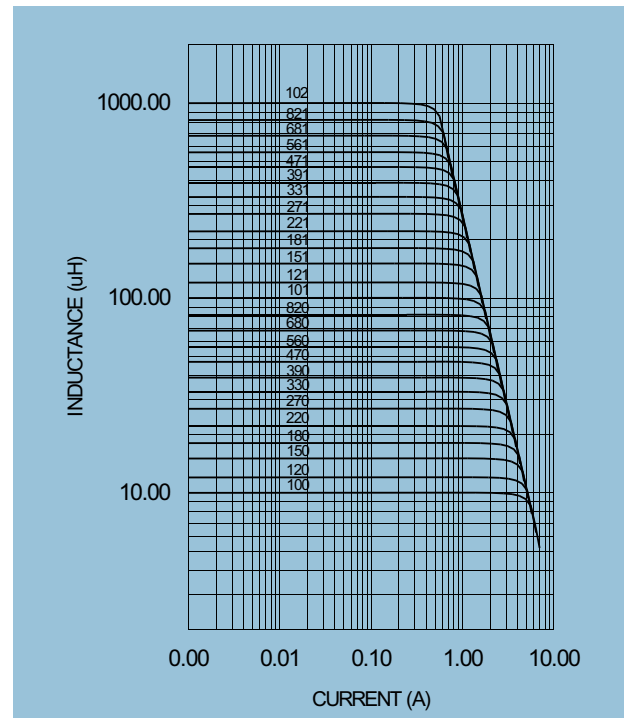
RECOMMENDED PAD PATTERNS



UNIT:mm/inch
 A = 13.0 / 0.512 Max.
 B = 13.0 / 0.512 Max.
 C = 5.5 ± 0.3 / 0.217 ± 0.012
 D = 4.0 ± 0.1 / 0.157 ± 0.004
 E = 2.0 ± 0.1 / 0.079 ± 0.004
 F = 8.6 ± 0.1 / 0.339 ± 0.004

Electrical Characteristics: 25°C: 1KHz, 1V

PART NO.	L ¹ (μH)	DCR (Ω)MAX	I _{rated} ² (Adc)
SIWC1355 - 100	10	0.027	3.60
SIWC1355 - 120	12	0.028	3.40
SIWC1355 - 150	15	0.037	3.00
SIWC1355 - 180	18	0.039	2.80
SIWC1355 - 220	22	0.045	2.50
SIWC1355 - 270	27	0.057	2.20
SIWC1355 - 330	33	0.069	2.10
SIWC1355 - 390	39	0.082	1.90
SIWC1355 - 470	47	0.090	1.70
SIWC1355 - 560	56	0.100	1.50
SIWC1355 - 680	68	0.120	1.40
SIWC1355 - 820	82	0.134	1.20
SIWC1355 - 101	100	0.189	1.10
SIWC1355 - 121	120	0.209	1.00
SIWC1355 - 151	150	0.273	0.93
SIWC1355 - 181	180	0.308	0.84
SIWC1355 - 221	220	0.384	0.79
SIWC1355 - 271	270	0.470	0.67
SIWC1355 - 331	330	0.586	0.59
SIWC1355 - 391	390	0.669	0.55
SIWC1355 - 471	470	0.803	0.53
SIWC1355 - 561	560	1.026	0.48
SIWC1355 - 681	680	1.166	0.44
SIWC1355 - 821	820	1.419	0.36
SIWC1355 - 102	1000	1.617	0.33



1. Tolerance of inductance : ± 20%.
2. I_{rated} is the DC current which cause the inductance drop less than 20% of its nominal inductance without current and the surface temperature of the part increase less than 45°C.
3. Operating temperature: -20°C to 105°C (including self-temperature rise).



DELTA ELECTRONICS, INC.

(TAOYUAN PLANT CPBG) 252, SAN YING ROAD, KUEISAN INDUSTRIAL ZONE, TAOYUAN SHIEN, 333, TAIWAN, R.O.C.

TEL: 886-3-3591968; FAX: 886-3-3591991

<http://www.deltawww.com>

Free Manuals Download Website

<http://myh66.com>

<http://usermanuals.us>

<http://www.somanuals.com>

<http://www.4manuals.cc>

<http://www.manual-lib.com>

<http://www.404manual.com>

<http://www.luxmanual.com>

<http://aubethermostatmanual.com>

Golf course search by state

<http://golfingnear.com>

Email search by domain

<http://emailbydomain.com>

Auto manuals search

<http://auto.somanuals.com>

TV manuals search

<http://tv.somanuals.com>