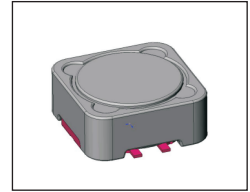


SMT Power Inductor

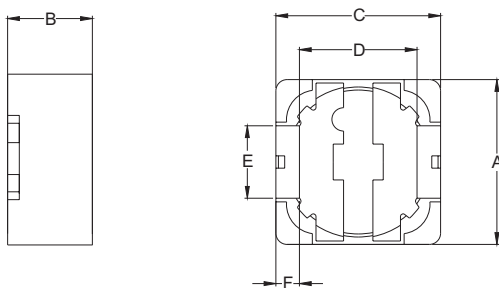
SIQ126R Type

Features

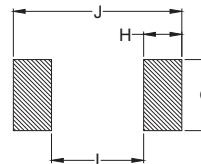
- RoHS compliant.
- Low profile (7.0mm max. height), high current(22A, 0.8uH) SMD type.
- Magnetically shielded, suitable for high density mounting.
- High energy storage and low DCR.
- Provided with embossed carrier tape packing.
- Ideal for power source circuits, DC-DC converter, DC-AC inverters inductor applications.
- In addition to the standard versions shown here, customized inductors are available to meet your exact requirements.



Mechanical Dimension:



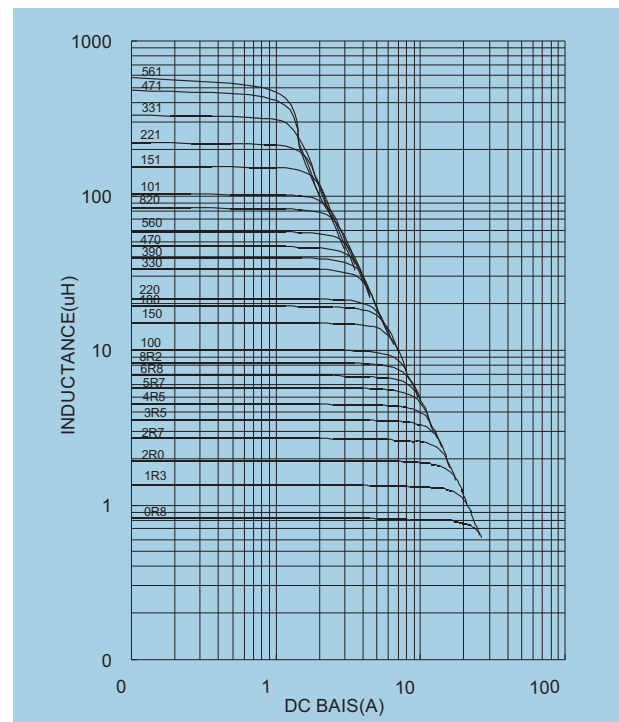
RECOMMENDED PAD PATTERNS



UNIT : mm/inch
 A = 12.5 / 0.492 MAX.
 B = 7.0 / 0.276 MAX.
 C = 12.5 / 0.492 MAX.
 D = 7.6 ± 0.3 / 0.299 ± 0.012
 E = 5.0 ± 0.2 / 0.197 ± 0.008
 F = 2.2 ± 0.2 / 0.087 ± 0.008
 G = 5.4 / 0.213
 H = 2.9 / 0.114
 I = 7.0 / 0.276
 J = 12.8 / 0.504

Electrical Characteristics: 25°C, 100KHz, 0.1V

PART NO.	L ¹ (uH)	DCR (mΩ) Max.	Isat ² (Adc) Max.	I _{rms} ³ (Adc)
SIQ126R - 0R8	0.8	5.0	22.00	22.00
SIQ126R - 1R3	1.3	6.0	18.00	18.00
SIQ126R - 2R0	2.0	7.0	15.00	15.00
SIQ126R - 2R7	2.7	8.0	13.00	13.00
SIQ126R - 3R5	3.5	9.0	11.00	11.00
SIQ126R - 4R5	4.5	11.0	10.00	10.00
SIQ126R - 5R7	5.7	13.0	9.00	9.00
SIQ126R - 6R8	6.8	16.0	8.00	8.00
SIQ126R - 8R2	8.2	17.0	7.50	7.50
SIQ126R - 100	10.0	21.0	6.50	6.50
SIQ126R - 150	15.0	30.0	5.60	5.60
SIQ126R - 180	18.0	36.0	5.00	5.00
SIQ126R - 220	22.0	41.0	4.50	4.50
SIQ126R - 330	33.0	54.0	3.60	3.60
SIQ126R - 390	39.0	66.0	3.30	3.30
SIQ126R - 470	47.0	80.0	3.20	3.20
SIQ126R - 560	56.0	100.0	2.80	2.80
SIQ126R - 820	82.0	140.0	2.40	2.40
SIQ126R - 101	100.0	180.0	2.00	2.00
SIQ126R - 151	150.0	250.0	1.60	1.60
SIQ126R - 221	220.0	340.0	1.40	1.40
SIQ126R - 331	330.0	500.0	1.15	1.15
SIQ126R - 471	470.0	750.0	0.95	0.95
SIQ126R - 561	560.0	880.0	0.88	0.88



1. Tolerance of inductance : 0.8~560uH ± 20%.
2. Irated is the DC current which cause the inductance drop less than 30% of its nominal inductance without current and the surface temperature of the part increase less than 45°C.
3. Operating temperature: -20°C to 105°C (including self-temperature rise).



DELTA ELECTRONICS, INC.

(TAOYUAN PLANT CPBG) 252, SAN YING ROAD, KUEISAN INDUSTRIAL ZONE, TAOYUAN SHIEN, 333, TAIWAN, R.O.C.

TEL: 886-3-3591968; FAX: 886-3-3591991

http://www.deltawww.com

Free Manuals Download Website

<http://myh66.com>

<http://usermanuals.us>

<http://www.somanuals.com>

<http://www.4manuals.cc>

<http://www.manual-lib.com>

<http://www.404manual.com>

<http://www.luxmanual.com>

<http://aubethermostatmanual.com>

Golf course search by state

<http://golfingnear.com>

Email search by domain

<http://emailbydomain.com>

Auto manuals search

<http://auto.somanuals.com>

TV manuals search

<http://tv.somanuals.com>