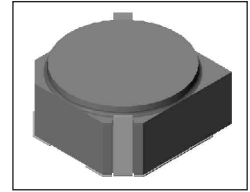


# SMT Power Inductor

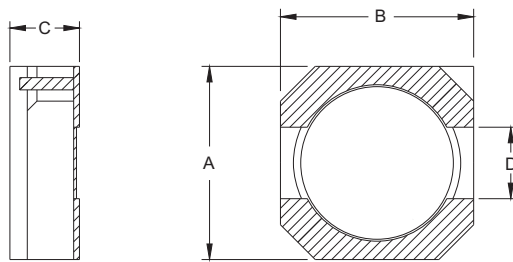
## SIL630 Type

### Features

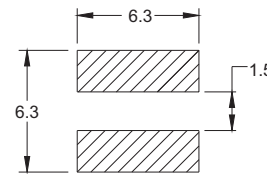
- RoHS compliant.
- Magnetically shielded.
- Ideal for power source circuits, DC-DC converter, DC-AC inverters inductor application.
- In addition to the standard versions shown here, customized inductors are available to meet your exact requirements.



### Mechanical Dimension:



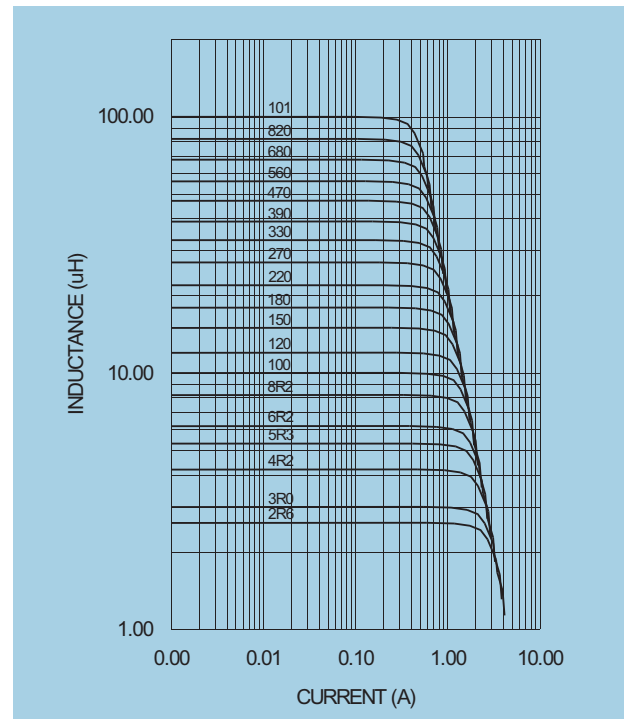
### RECOMMENDED PAD PATTERNS



UNIT:mm/inch  
 A = 6.0 / 0.236 Max.  
 B = 6.0 / 0.236 Max.  
 C = 3.0 / 0.118 Max.  
 D = 2.0±0.1 / 0.079±0.004

### Electrical Characteristics: 25°C: 100KHz, 0.1V

PART NO.	L <sup>1</sup> (μH)	DCR (Ω) MAX	I <sub>rated</sub> <sup>2</sup> (A <sub>dc</sub> )
SIL630 - 1R2	1.2	0.013	3.50
SIL630 - 1R5	1.5	0.014	3.40
SIL630A - 1R5	1.5	0.016	3.50
SIL630 - 2R2	2.2	0.018	2.60
SIL630A - 2R2	2.2	0.022	3.00
SIL630B - 2R2	2.2	0.240	3.50
SIL630 - 2R6	2.6	0.018	2.60
SIL630 - 3R0	3.0	0.024	2.40
SIL630B - 3R0	3.0	0.028	3.30
SIL630 - 3R3	3.3	0.026	2.40
SIL630 - 4R2	4.2	0.031	2.20
SIL630C - 4R2	4.2	0.048	2.50
SIL630 - 4R7	4.7	0.037	2.05
SIL630B - 4R7	4.7	0.044	2.70
SIL630A - 4R7	4.7	0.045	2.20
SIL630 - 5R3	5.3	0.038	1.90
SIL630 - 6R2	6.2	0.045	1.80
SIL630B - 6R8	6.8	0.057	2.20
SIL630B - 7R6	7.6	0.067	2.00
SIL630 - 8R2	8.2	0.053	1.60
SIL630A - 8R2	8.2	0.060	1.60
SIL630 - 100	10.0	0.065	1.30
SIL630A - 100	10.0	0.070	1.50
SIL630B - 100	10.0	0.082	1.80
SIL630 - 120	12.0	0.076	1.20
SIL630 - 150	15.0	0.103	1.10
SIL630B - 150	15.0	0.130	1.50
SIL630 - 180	18.0	0.110	1.00
SIL630 - 220	22.0	0.122	0.90
SIL630B - 220	22.0	0.176	1.20
SIL630 - 270	27.0	0.175	0.85
SIL630 - 330	33.0	0.189	0.75
SIL630 - 390	39.0	0.212	0.70
SIL630 - 470	47.0	0.260	0.62
SIL630 - 560	56.0	0.305	0.58
SIL630 - 680	68.0	0.355	0.52
SIL630 - 820	82.0	0.463	0.42
SIL630 - 101	100.0	0.520	0.42
SIL630 - 471	470.0	3.600	0.19



1. Tolerance of inductance : ± 30%.
2. I<sub>rated</sub> is the DC current which cause the inductance drop less than 35% of its nominal inductance without current and the surface temperature of the part increase less than 45°C.
3. Operating temperature: -20°C to 105°C (including self-temperature rise).



DELTA ELECTRONICS, INC.

(TAOYUAN PLANT CPBG) 252, SAN YING ROAD, KUEISAN INDUSTRIAL ZONE, TAOYUAN SHIEN, 333, TAIWAN, R.O.C.

TEL: 886-3-3591968; FAX: 886-3-3591991

<http://www.deltawww.com>

## Free Manuals Download Website

<http://myh66.com>

<http://usermanuals.us>

<http://www.somanuals.com>

<http://www.4manuals.cc>

<http://www.manual-lib.com>

<http://www.404manual.com>

<http://www.luxmanual.com>

<http://aubethermostatmanual.com>

Golf course search by state

<http://golfingnear.com>

Email search by domain

<http://emailbydomain.com>

Auto manuals search

<http://auto.somanuals.com>

TV manuals search

<http://tv.somanuals.com>