

Safety And Regulatory Information

Safety & Regulatory Information
The following sections contain notices for various countries:

Caution
This product is intended for use with FCC/CE certified computer equipment. Please check the equipment operating/installation manual and/or with the equipment manufacturer to verify/confirm if your equipment is suitable prior to the installation or use of the product.

Notice for USA
FCC Part 15: This equipment has been tested and found to comply with the limits for a Class B digital device, pursuant to Part 15 of the FCC Rules. These limits are designed to provide reasonable protection against harmful interference in a residential installation. This equipment generates, uses and can radiate radio frequency energy and, if not installed and used in accordance with the instructions, may cause harmful interference to radio communications. However, there is no guarantee that interference will not occur in a particular installation. If this equipment does cause harmful interference to radio or television reception, which can be determined by turning the equipment off and on, the user is encouraged to try to correct the interference by one or more of the following measures:

- Reorient or relocate the receiving antenna.
- Increase the separation between the equipment and receiver.
- Connect the equipment into an outlet on a circuit different from that to which the receiver is connected.
- Consult the dealer or an experienced radio/TV technician for help.

This device complies with part 15 of the FCC Rules. Operation is subject to the following two conditions:

1. This device may not cause harmful interference, and
2. This device must accept any interference received, including interference that may cause undesired operation.

Caution

To comply with the limits of the Class B digital device, pursuant to Part 15 of the FCC Rules, this device must be installed with computer equipment certified to comply with Class B limits.

All cables used to connect to the computer and peripherals must be shielded and grounded. Operation with non-certified computers or non-shielded cables may result in interference to radio or television reception.

Modification

Any changes or modifications not expressly approved by the grantee of this device could void the user's authority to operate the device.

Notice for Canada

This Class B digital apparatus complies with Canadian ICES-003. Cet appareil numérique de la classe B est conforme à la norme NMB-003 du Canada.

Canadian Class B Statement

This digital device does not exceed the Class B limits for radio noise emissions from digital apparatus as set out in the interference-causing equipment standard entitled "Digital Apparatus," ICES-003 of the Department of Communications.

Cet appareil numérique respecte les limites de bruits radioélectriques applicables aux appareils numériques de Classe B prescrites dans la norme sur le matériel brouilleur: "Appareils Numériques," NMB-003 édictée par le ministre des Communications.

MODIFICATION:

Any changes or modifications not expressly approved by the grantee of this device could void the user's authority to operate the device.

Toute modification non approuvée explicitement par le fournisseur de licence de l'appareil peut entraîner l'annulation du droit de l'utilisateur à utiliser l'appareil.

State of California Proposition 65:

WARNING: Handling this product may expose you to chemicals known to the State of California to cause cancer and birth defects or other reproductive harm. **Wash hands after handling.**

Explanatory Note

California Safe Drinking Water and Toxic Enforcement Act of 1986 (Proposition 65) requires special product labeling for products containing certain chemicals known to the State of California to cause cancer, birth defects or other reproductive harm. Creative has chosen to provide a warning based on its knowledge about the presence of one or more listed chemicals without attempting to evaluate the level of exposure. With Creative's products, the exposure may be below the Proposition 65 level of concern, or could even be zero. However, out of an abundance of caution, Creative has elected to place the Proposition 65 warning on its products.

DECLARATION OF CONFORMITY

According to the FCC96 208 and ET95-19
Manufacturer/Importer's Name: Creative Labs, Inc.
Manufacturer/Importer's Address: 1901 McCarthy Boulevard
Milpitas, CA. 95035
Tel: (408)428-6600

declares under its sole responsibility that the product

Trade Name: Creative
Model Numbers: MF4110

has been tested according to the FCC / CISPR22 requirement for Class B devices and found compliant with the following standards:

EMVEM: ANSI C63.4, FCC Part 15 Subpart B
Complies with Canadian ICES-003 Class B

This device complies with part 15 of the FCC Rules.

Operation is subject to the following two conditions:

- (1) This device may not cause harmful interference, and
- (2) this device must accept any interference received, including interference that may cause undesirable operation.

Ce matériel est conforme à la section 15 des règles FCC.

Son Fonctionnement est soumis aux deux conditions suivantes :

- (1) Le matériel ne peut être source d'interférences et
- (2) Doit accepter toutes les interférences reçues, Y compris celles pouvant provoquer un fonctionnement indésirable.

Supplementary information:

Compliance Manager
Creative Labs, Inc.
June 20, 2010

Safety Instructions

Safety Instructions

Please read the following before using Creative products:

- To be completely disconnected from the power input, the mains plug has to be disconnected/detached from the mains
- Disconnect the mains plug when the device is expected to be unused for several days

Consignes de sécurité

Veuillez lire les informations suivantes avant d'utiliser des produits Creative :

- Pour mettre l'appareil complètement hors tension, débranchez le câble d'alimentation de la prise secteur
- Débranchez le câble d'alimentation de la prise secteur si vous n'utilisez pas l'appareil pendant plusieurs jours

Instrucciones de seguridad

Lea las siguientes instrucciones antes de utilizar productos Creative:

- Para desconectar completamente de la entrada de alimentación, debe desconectar el enchufe de alimentación de red de la corriente
- Desconecte el enchufe de alimentación de red cuando no vaya a utilizar el dispositivo durante varios días

Instruções de segurança

Leia as seguintes informações antes de utilizar produtos Creative:

- Certifique-se de que desliga a ficha de alimentação da corrente eléctrica
- Desligue a ficha de alimentação se o dispositivo não for utilizado durante um longo período de tempo

Güvenlik talimatları

Creative ürününü kullanmadan önce lütfen aşağıdaki talimatları okuyun:

- Elektrik girişinden tamamen bağlantıyı kesmek için, fişin prizden çıkarılmış ya da bağlantısı kesilmiş olmalıdır
- Cihazı birkaç gün kullanmayacaksanız fişini prizden çekin

安全指示

在使用 Creative 產品之前，請閱讀下文：

- 如要與電源輸入完全分開連接，必須將主插頭從電源上分開/拔下
- 如果裝置在數日內不用，請將主插頭分開連接

安全に関する注記

Creative製品をご使用になる前に以下をお読みください。

- 電源入力を完全に切断するには、電源プラグをコンセントから抜きます。
- デバイスを数日間使用しない場合は、電源プラグをコンセントから抜きます。

安全使用说明

请先阅读以下内容，然后再使用 Creative 产品：

- 要彻底切断电源输入，需要拔下主插头或断开主插头与主线的连接
- 如果设备将闲置几天不用，需切断其与主插头的连接

Instruksi keamanan

Mohon baca petunjuk dibawa ini sebelum menggunakan produk Creative:

- Untuk Sepenuhnya lepas dari power input, colokan utama harus dilepaskan
- Mohon lepaskan colokan utama apabila berencana untuk tidak menggunakan speaker selama beberapa hari

EN English

Specifications
A520 / SBS A520
Power output
Satellite speaker: 5 watts RMS per channel
Subwoofer: 12 watts RMS
Signal-to-Noise Ratio: 75dB
Frequency Response: 40Hz - 20kHz

Important Notice

The serial number for your A520/SBS A520 is located on the subwoofer. Please write this number down and keep it in a secure place.

ES Español

Especificaciones
A520 / SBS A520
Salida de alimentación
Altavoz auxiliar: 5 vatios de carga eficaz por canal
Subwoofer: 12 vatios de carga eficaz
Relación de señal a ruido: 75dB
Respuesta de frecuencias: 40Hz a 20kHz

Aviso importante

El número de serie para A520/SBS A520 se encuentra en el altavoz de graves. Anote este número y guárdelo.

TR Türkçe

Özellikler
A520 / SBS A520
Ses gücü
Satellite hoparlör: Kanal başına 5 W RMS
Subwoofer: 12 watt RMS
İgnel-Gürültü Oranı: 75 dB
Frekans Yantı: 40 Hz – 20 kHz

Önemli

A520/SBS A520'ün seri numarası subwoofer üzerindedir. Lütfen bu numarayı bir yere not edin ve güvenli bir yerde saklayın.

JP 日本語

仕様
A520 / SBS A520
出力
サテライトスピーカー: 5W RMS/チャンネル
サブウーファー: 12W RMS
SNR(S/N比): 75dB
周波数特性: 40Hz ~ 20kHz

注意事項

本製品のシリアルナンバーはサブウーファー上に記載されています。この番号を控えて保存しておいて下さい。

BI Bahasa Indonesia

Spesifikasi
A520 / SBS A520
Pengeluaran energi
Pengeras suara dengan satelit:
5 watt RMS per terusan
Subwoofer: 12 watts RMS
Menangkap sinyal radio sampel: 75dB
Frekuensi: 40Hz - 20kHz

Catatan penting

nomer seri untuk A520/SBS A520 terletak didalam satelit. Harap tulis nomer ini dibagian bawah dan simpan ditempat yang aman.

FR Français

Spécifications
A520 / SBS A520
Sortie de l'alimentation
Haut-parleur satellite: 5 watts RMS par canal
Caisson de basse: 12 watts RMS
Rapport signal/bruit: 75dB
Réponse en fréquence: 40Hz - 20kHz

Avis important

Le numéro de série de votre A520/SBS A520 de Creative se trouve sur le caisson de basses. Veuillez prendre ce numéro en note et le conserver en lieu sûr.

BP Português do Brasil

Especificações
A520 / SBS A520
Saída de alimentação
Alto-falante: RMS de 5 watts por canal
Subwoofer: RMS de 12 watts
Relação sinal/ruído: 75dB
Resposta de frequência: 40Hz a 20kHz

Nota importante

O número de série do seu A520/SBS A520 está localizado no subwoofer. Por favor, tome nota deste número e guarde-o em um lugar seguro.

CT 繁體中文

規格
A520 / SBS A520
功率輸出
衛星喇叭: 每聲道 5 瓦 RMS
重低音音箱: 12 瓦輸出功率
訊噪比: 75dB
頻率響應: 40Hz ~ 20kHz

重要提示

A520/SBS A520 的序號在重低音音箱上。請抄下這個序號並妥善保存。

CS 简体中文

规格
A520 / SBS A520
功率输出
卫星音箱: 额定功率 5 瓦(每声道)
低音炮: 额定功率 12 瓦
信噪比: 75dB
频率响应: 40Hz ~ 20kHz

重要提示

A520/SBS A520 的序列号在低音炮上。请将此序列号记录下来并妥善保存。

CREATIVE



EN Quick Start Guide

FR Démarrage Rapide

ES Guía Rápida

BP Introdução rápida

TR Kullanım

CT 快速入門指南

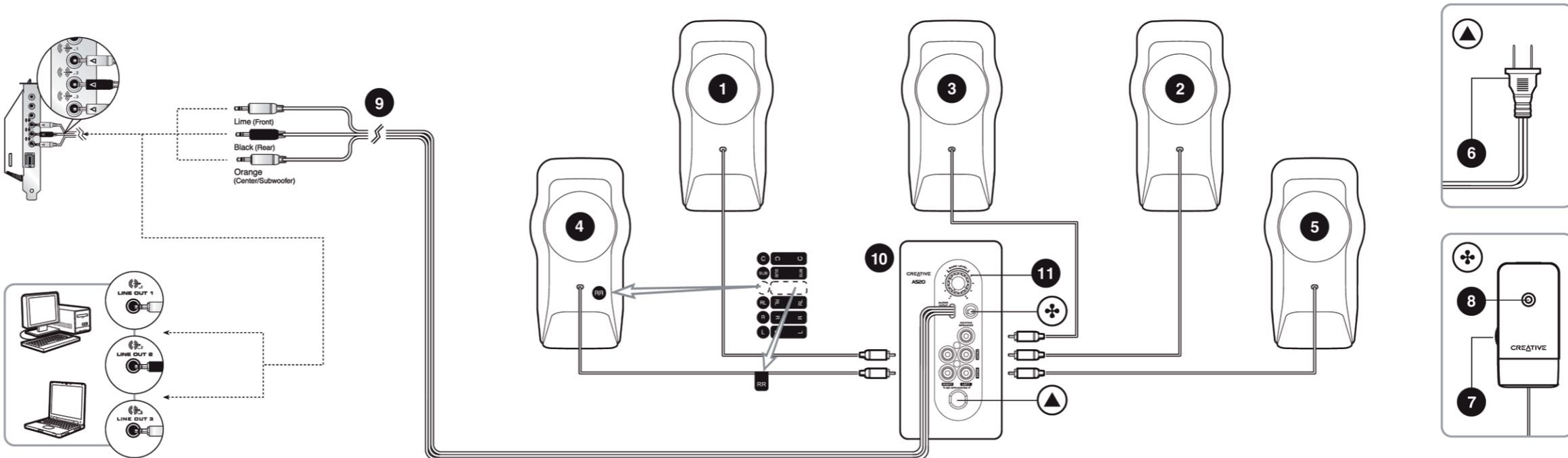
JP クイックスタートガイド

CS 快速开始指南

BI Permulaan baca buku panduan

A520 / SBS A520

- **Connectivity Diagram**
- **Schéma de connexion**
- **Diagramm zur conectividad**
- **Diagramm zur conectividade**
- **Balant diyagram**
- **連接示意圖**
- **接続図**
- **连接示意图**
- **Sambungan jaringan berupa diagram**



EN English	FR Français	ES Español	BP Português do Brasil	TR Türkçe	CT 繁體中文	JP 日本語	CS 简体中文	BI Bahasa Indonesia
1 Front Right Satellite Speaker	Satellite avant droit	Altavoz auxiliar derecho frontal	Alto-falante de satélite frontal direito	Sağ ön datellite hoparlör	前右環繞喇叭	フロント右サテライトスピーカー	前右环绕音箱	Satelit Speaker Bagian Kanan Depan
2 Front Left Satellite Speaker	satellite avant gauche	Altavoz auxiliar izquierdo frontal	Alto-falante de satélite frontal izquierdo	Sol ön datellite hoparlör	前左環繞喇叭	フロント左サテライトスピーカー	前左环绕音箱	Satelit Speaker Bagian Kiri Depan
3 Centre Satellite Speaker	Satellite central	Altavoz auxiliar central	Alto-falante de satélite central	Orta satellite hoparlör	中置環繞喇叭	センターサテライトスピーカー	中置环绕音箱	Satelit Speaker Bagian Tengah
4 Rear Right Satellite Speaker	Satellite arrière droit	Altavoz auxiliar derecho posterior	Alto-falante de satélite trasero derecho	Sağ arka satellite hoparlör	後右環繞喇叭	リア右サテライトスピーカー	后右环绕音箱	Speaker belakang kanan
5 Rear Left Satellite Speaker	Satellite arrière gauche	Altavoz auxiliar izquierdo posterior	Alto-falante de satélite trasero izquierdo	Sol arka satellite hoparlör	後左環繞喇叭	リア左サテライトスピーカー	后左环绕音箱	Speaker belakang kiri
6 To Wall Outlet	Vers la prise mural	A la toma de corriente	Para Tomada Eléctrica	Duvar çıkışı	至牆壁插座	コンセントへ接続	至墙壁插座	Ke stopkontak
7 Volume Control with Power ON/OFF Switch	Contrôle Du Volume Avec Interrupteur ON/OFF	Control De Volumen Con 8 Interruptor De Encendido	Control De Volume Com 8 Chave De Liga/Desliga	Güç Açık/Kapalı Düğmesiyle Ses Yüksekliği Denetimi	带有电源开关的音量控制	ボリュームコントロール用ON/OFFスイッチ	带有电源开关的音量控制	Pengatur volume dengan pemutar ON/OFF
8 Power LED	Diode électroluminescente POWER	LED Power	Indicador LED de alimentación	Güç LED'i	電源指示燈	パワー-LED	电源 LED 指示灯	LED Daya
9 To Analog Audio Source Lime (Front) Black (Rear) Orange (Center/Subwoofer)	Vers la source audio analogique Vert Lime (Avant) Noir (Arrière) Orange (Central/Caisson de basses)	Fuente de sonido análoga Color Lime (Frontal) Negro (Posteriora) Naranja (Centro/Subwoofer)	Fonte de áudio analógico Lime (Frontal) Preto (Trasero) Alaranjado (Centro/Subwoofer)	Analog Ses Kaynaklarına Limon Yeşili (Sag) Siyah (Sol) Portakal (Orta/Subwoofer)	至類比音源 綠色 (前) 黑色 (後) 黑色 (中央 / 重低音音箱)	オーディオ(アナログ)出力へ接続 青色(前) 黒色(後) 黒(リア) オレンジ(センター/サブウーファー)	接至模拟音源 青色(前) 黑色(后) 黑色(中置/低音炮)	Ke sumber audio analog Hijau (depan) Hitam (belakang) Oranye (pusat/ subwoofer)
10 Subwoofer	Caisson de basses	Subgrave	Subwoofer	Subwoofer	重低音音箱	サブウーファー	低音炮	Subwoofer
11 Bass Level Control	Bouton de réglage des basses	Control de nivel de graves	Control de nivel de graves	Güç LED'i	低音旋鈕	バスレベルコントロール	低音音量控制	Tingkat kontrol bass

Free Manuals Download Website

<http://myh66.com>

<http://usermanuals.us>

<http://www.somanuals.com>

<http://www.4manuals.cc>

<http://www.manual-lib.com>

<http://www.404manual.com>

<http://www.luxmanual.com>

<http://aubethermostatmanual.com>

Golf course search by state

<http://golfingnear.com>

Email search by domain

<http://emailbydomain.com>

Auto manuals search

<http://auto.somanuals.com>

TV manuals search

<http://tv.somanuals.com>