

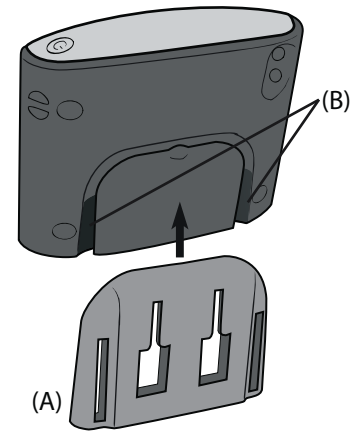
TravelMount™ Windshield, Console, or Dash Mount for TomTom™ ONE® XL portable GPS navigation device.

Compatible with TomTom™ ONE® XL portable navigation device.

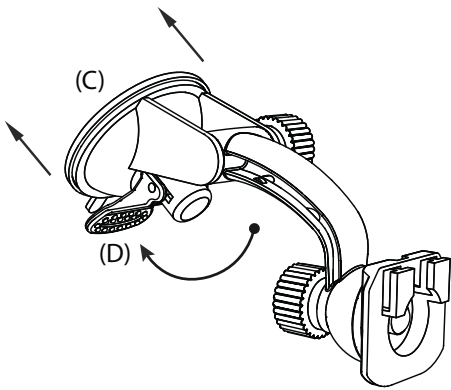
Installation Instructions

1. Choose the best location on vehicle to place the mount. **Do not place mount in or near an air bag deployment zone or where it will obstruct view of the road.**

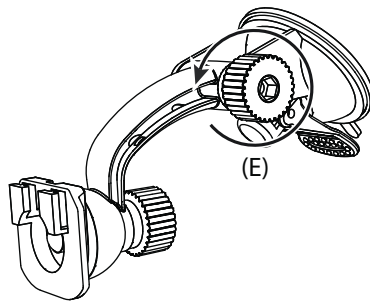
2. Attach the adapter plate (A) into the grooves on the back of the TomTom One XL GPS device (B).



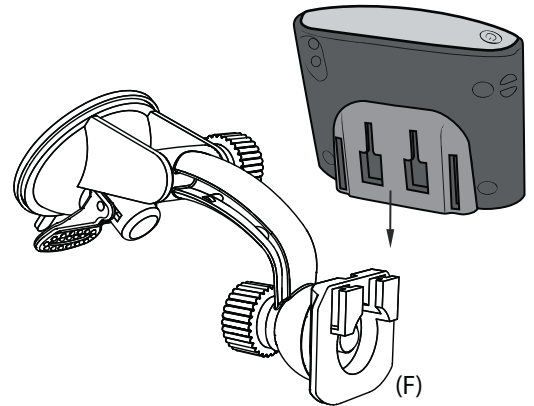
3. Push the pedestal suction cup (C) firmly to the windshield. Flip the lever (D) toward base to secure the suction cup.



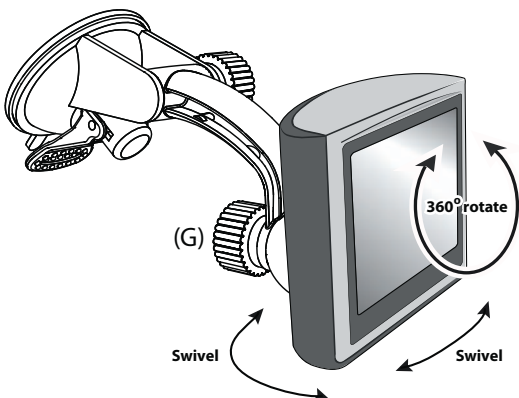
4. Adjust the angle of the arm by loosening the adjustment knob (E).



5. Attach TomTom ONE XL to the pedestal head (F).

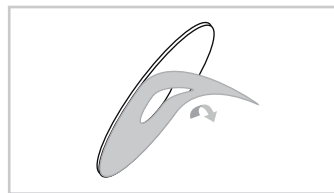


6. Loosen the adjustment knob of the head (G) and adjust the device as desired. Tighten knob to secure.



Installation for Console or Dash Mount (Optional)

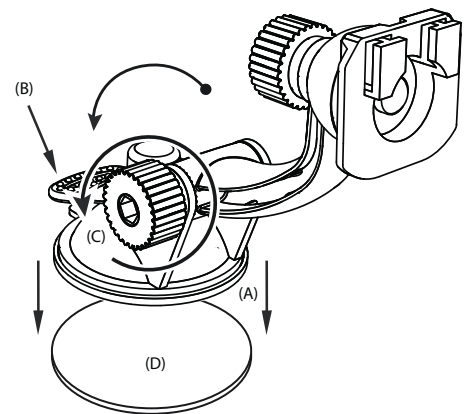
1. Remove paper liner from adhesive on mount disc and affix adhesive to the dash. Let stand (at room temperature) for 24 hours before using.



Removal of Dash Mount

To remove the dash mount completely, use a cotton swab dipped in isopropyl alcohol. Simply peel up a corner of the dash mount adhesive and swab under the pad while gently pulling until the adhesive begins to release. Remove slowly. No damage will occur from the adhesive if it has been properly installed and removed per these instructions. You may see a slight discoloration between this area and other parts of your dash due to fading caused by the sun.

2. Push the pedestal suction cup (A) down onto the disc (D). Flip the lever (B) down to secure the suction cup. Adjust the angle of the arm by loosening the adjustment knob (C).



! Safety Precautions

Do not install Arkon products over an air bag cover or within the air bag deployment zone. Arkon Resources, Inc. assumes no responsibility of liability for injury or death as a result of car crashes and/or air bag deployment.

Arkon Resources, Inc. is not responsible for any damages caused to your car, your device, or yourself due to the installation or use of the pedestal mount.

ARKON RESOURCES INC.

The Mobile Mounting Specialists™

Consumer Hotline:

(USA) (800) 841-0884

(INT'L) (626) 254-9005

Mon-Fri. 9am-5pm, PST

www.arkon.com

Arcadia, CA 91006 USA

Made in Taiwan

© Copyright 2007 Arkon Resources, Inc.

Free Manuals Download Website

<http://myh66.com>

<http://usermanuals.us>

<http://www.somanuals.com>

<http://www.4manuals.cc>

<http://www.manual-lib.com>

<http://www.404manual.com>

<http://www.luxmanual.com>

<http://aubethermostatmanual.com>

Golf course search by state

<http://golfingnear.com>

Email search by domain

<http://emailbydomain.com>

Auto manuals search

<http://auto.somanuals.com>

TV manuals search

<http://tv.somanuals.com>