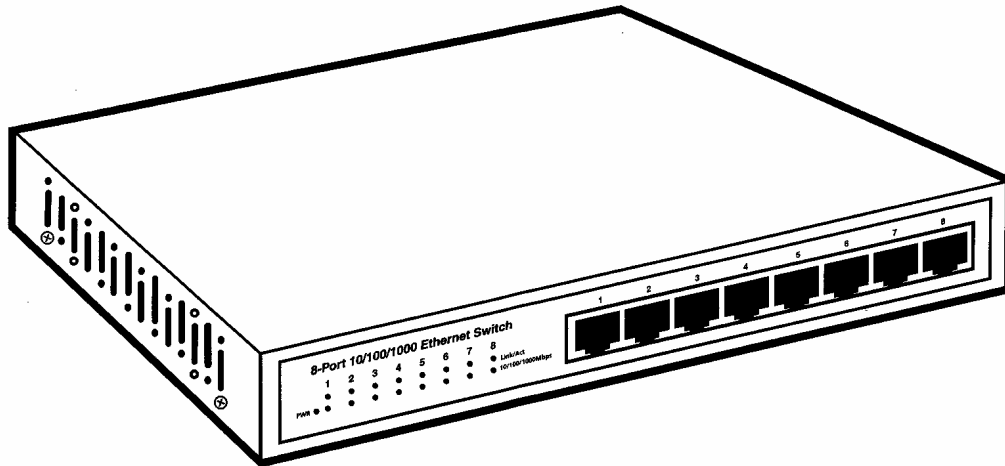




8-Port 10/100/1000 Ethernet Switch



1. Specifications

Standards: IEEE 802.3/802.3ab/802.3u/802.3x;
FCC Part 15 Class A; CE

Transmission: 10/100 Mbps full or half-duplex;
1000 Mbps full duplex only

Speed: 1,488,000 pps at 1000 Mbps; 148,800 pps at
100 Mbps; 14,880 pps at 10 Mbps

Maximum Distance: Up to 328 ft. (100 m)

Bandwidth: Up to 16 Gbps aggregate

MAC Address: Up to 8 K

Buffer Memory: 144 KB on chip frame buffer

Flow Control: IEEE 802.3x compliant for full duplex;
backpressure flow control for half-duplex

Switching Method: Store and forward

Cable Required: 10BASE-T: Unshielded twisted-pair
(UTP) Category 3, 4, 5, or up;
100BASE-TX, 1000BASE-T: UTP Category 5 or up

Connectors: (8) 10/100/1000 Mbps RJ-45

Indicators: System LED: (1) Power;
Per-port LEDs: (8) Link/Act, (8) 10/100/1000 Mbps

Temperature Tolerance: Operating: 32 to 122°F
(0 to 50°C);
Storage: 32 to 131°F (0 to 55°C)

Humidity Tolerance: 5 to 95%

Power: 100–240 VAC, 50–60 Hz, 10 W

Size: 1.3"H x 7.8"W x 4.7"D (3.3 x 19.8 x 11.9 cm)

2. Overview

2.1 Description

The 8-Port 10/100/1000 Ethernet Switch seamlessly integrates with a 10/100/1000-Mbps network through its autonegotiating and nonblocking design. Connect up to eight Ethernet devices or segments to the switch. It fits neatly on a desktop, and it provides up to 16 Gbps aggregate bandwidth.

CUSTOMER SUPPORT INFORMATION

Order toll-free in the U.S.: Call **877-877-BBOX** (outside U.S. call **724-746-5500**)
FREE technical support 24 hours a day, 7 days a week: Call **724-746-5500** or fax **724-746-0746**
Mailing address: **Black Box Corporation**, 1000 Park Drive, Lawrence, PA 15055-1018
Web site: www.blackbox.com • E-mail: info@blackbox.com

2.1.1 FRONT PANEL

The switch's front panel has 16 port LEDs and 1 system LED. All front-panel components are shown in Figure 2-1 and are described in Table 2-1.

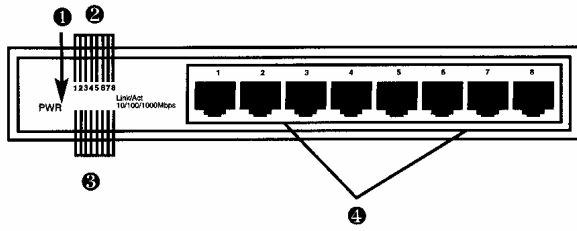


Figure 2-1. The switch's front panel.

Table 2-1. Front-panel indicators and connectors.

Component	Description
❶ Power LED	Lights when power is on.
❷ Link/Act LEDs	Lights when the twisted-pair connection is good. Blinks when traffic is present.
❸ 10/100/1000 Mbps LEDs	Green when 1000 Mbps speed is active. Amber when 100 Mbps speed is active. Off when 10 Mbps speed is active.
❹ RJ-45 connectors	Connect up to eight network devices to these ports.

2.1.2 BACK PANEL

The switch's rear panel has a 100–240-VAC, 50–60-Hz, 10-W power connector.

2.2 What's Included

Your package should include the following items. If anything is missing or damaged, please contact Black Box at 724-746-5500.

- (1) 8-Port 10/100/1000 Ethernet Switch
- (1) AC power cord
- This user's manual

TRADEMARKS USED IN THIS MANUAL

Any trademarks mentioned in this manual are acknowledged to be the property of the trademark owners.

2.3 Typical Application

An application example is shown below.

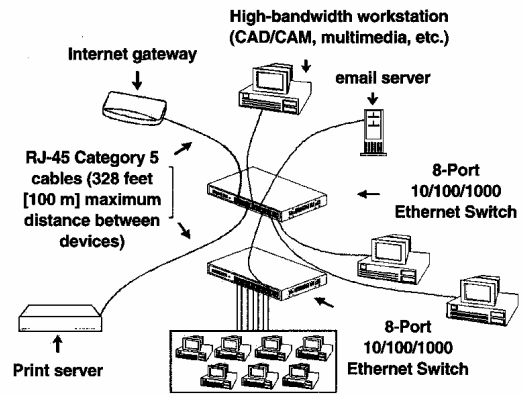


Figure 2-2. Sample setup.

3. Installation

The 8-Port 10/100/1000 Ethernet Switch is plug-and-play, so it's easy to install and use. Network and port status can be easily monitored via front-panel diagnostic LEDs. The twisted-pair ports support MDI/MDI-X auto-crossover, so both straight-through and crossover cable will work when connected to the switch's RJ-45 ports. Follow the instructions below to install the switch.

1. Use CAT5 or CAT5e UTP RJ-45 cable to connect one of the switch's twisted-pair ports to a network device, such as a workstation or server. The cable can be up to 328 feet (100 m) long.
2. Repeat step 1 to connect up to eight devices to the switch's eight twisted-pair ports.

© Copyright 2005. Black Box Corporation. All rights reserved.

1000 Park Drive • Lawrence, PA 15055-1018 • 724-746-5500 • Fax 724-746-0746

Free Manuals Download Website

<http://myh66.com>

<http://usermanuals.us>

<http://www.somanuals.com>

<http://www.4manuals.cc>

<http://www.manual-lib.com>

<http://www.404manual.com>

<http://www.luxmanual.com>

<http://aubethermostatmanual.com>

Golf course search by state

<http://golfingnear.com>

Email search by domain

<http://emailbydomain.com>

Auto manuals search

<http://auto.somanuals.com>

TV manuals search

<http://tv.somanuals.com>