



**BLACK BOX**  
NETWORK SERVICES

VX-HDMI-IP-MTX  
VX-HDMI-IP-MRX

VX-HDMI-IP-UTX  
VX-HDMI-IP-URX

VX-HDMI-IP-VTX  
VX-HDMI-IP-VRX

## MediaCento™ IPX

Extend audio and video signals via an existing LAN.

Distribute HDMI video to an unlimited number of displays using IP multicast or make eye-catching video walls of up to 8 x 8 displays.



### Customer Support Information

Order toll-free in the U.S.: Call 877-877-BBOX (outside U.S. call 724-746-5500) • FREE technical support 24 hours a day, 7 days a week: Call 724-746-5500 or fax 724-746-0746 • Mailing address: Black Box Corporation, 1000 Park Drive, Lawrence, PA 15055-1018  
Web site: [www.blackbox.com](http://www.blackbox.com) • E-mail: [info@blackbox.com](mailto:info@blackbox.com)

## Trademarks Used in this Manual

---

### Trademarks Used in this Manual

Black Box and the Double Diamond logo are registered trademarks, and MediaCento is a trademark, of BB Technologies, Inc.

Bonjour and Apple are registered trademarks of Apple, Inc.

Windows is a registered trademark of Microsoft Corporation.

UL is a registered trademark of Underwriters' Laboratories.

Any other trademarks mentioned in this manual are acknowledged to be the property of the trademark owners.

### FEDERAL COMMUNICATIONS COMMISSION AND INDUSTRY CANADA RADIO FREQUENCY INTERFERENCE STATEMENTS

This equipment generates, uses, and can radiate radio-frequency energy, and if not installed and used properly, that is, in strict accordance with the manufacturer's instructions, may cause interference to radio communication. It has been tested and found to comply with the limits for a Class A computing device in accordance with the specifications in Subpart B of Part 15 of FCC rules, which are designed to provide reasonable protection against such interference when the equipment is operated in a commercial environment. Operation of this equipment in a residential area is likely to cause interference, in which case the user at his own expense will be required to take whatever measures may be necessary to correct the interference.

Changes or modifications not expressly approved by the party responsible for compliance could void the user's authority to operate the equipment.

*This digital apparatus does not exceed the Class A limits for radio noise emission from digital apparatus set out in the Radio Interference Regulation of Industry Canada.*

*Le présent appareil numérique n'émet pas de bruits radioélectriques dépassant les limites applicables aux appareils numériques de classe A prescrites dans le Règlement sur le brouillage radioélectrique publié par Industrie Canada.*

### Normas Oficiales Mexicanas (NOM) Electrical Safety Statement INSTRUCCIONES DE SEGURIDAD

1. Todas las instrucciones de seguridad y operación deberán ser leídas antes de que el aparato eléctrico sea operado.
2. Las instrucciones de seguridad y operación deberán ser guardadas para referencia futura.
3. Todas las advertencias en el aparato eléctrico y en sus instrucciones de operación deben ser respetadas.

## NOM Statement

---

4. Todas las instrucciones de operación y uso deben ser seguidas.
5. El aparato eléctrico no deberá ser usado cerca del agua—por ejemplo, cerca de la tina de baño, lavabo, sótano mojado o cerca de una alberca, etc.
6. El aparato eléctrico debe ser usado únicamente con carritos o pedestales que sean recomendados por el fabricante.
7. El aparato eléctrico debe ser montado a la pared o al techo sólo como sea recomendado por el fabricante.
8. Servicio—El usuario no debe intentar dar servicio al equipo eléctrico más allá a lo descrito en las instrucciones de operación. Todo otro servicio deberá ser referido a personal de servicio calificado.
9. El aparato eléctrico debe ser situado de tal manera que su posición no interfiera su uso. La colocación del aparato eléctrico sobre una cama, sofá, alfombra o superficie similar puede bloquea la ventilación, no se debe colocar en libreros o gabinetes que impidan el flujo de aire por los orificios de ventilación.
10. El equipo eléctrico debe ser situado fuera del alcance de fuentes de calor como radiadores, registros de calor, estufas u otros aparatos (incluyendo amplificadores) que producen calor.
11. El aparato eléctrico deberá ser conectado a una fuente de poder sólo del tipo descrito en el instructivo de operación, o como se indique en el aparato.
12. Precaución debe ser tomada de tal manera que la tierra física y la polarización del equipo no sea eliminada.
13. Los cables de la fuente de poder deben ser guiados de tal manera que no sean pisados ni pellizcados por objetos colocados sobre o contra ellos, poniendo particular atención a los contactos y receptáculos donde salen del aparato.
14. El equipo eléctrico debe ser limpiado únicamente de acuerdo a las recomendaciones del fabricante.
15. En caso de existir, una antena externa deberá ser localizada lejos de las líneas de energía.

16. El cable de corriente deberá ser desconectado del cuando el equipo no sea usado por un largo periodo de tiempo.
17. Cuidado debe ser tomado de tal manera que objetos líquidos no sean derramados sobre la cubierta u orificios de ventilación.
18. Servicio por personal calificado deberá ser provisto cuando:
  - A: El cable de poder o el contacto ha sido dañado; u
  - B: Objetos han caído o líquido ha sido derramado dentro del aparato; o
  - C: El aparato ha sido expuesto a la lluvia; o
  - D: El aparato parece no operar normalmente o muestra un cambio en su desempeño; o
  - E: El aparato ha sido tirado o su cubierta ha sido dañada.

# Table of Contents

---

## Table of Contents

1.	Specifications .....	8
2.	Overview .....	9
2.1	Introduction.....	9
2.2	Available Models .....	9
2.3	Features.....	9
2.3.1	Multicast, Unicast, and Video Wall Transmitters and Receivers.....	9
2.3.2	Multicast and Video Wall Transmitter and Receiver Functions .....	10
2.3.3	Video Wall Transmitter and Receiver Exclusive Functions.....	10
2.4	What's Included .....	10
2.5	Additional Items You Will Need.....	11
2.6	Hardware Description.....	11
2.6.1	Transmitters.....	11
2.6.2	Receivers.....	14
2.6.3	Indicators .....	16
2.6.4	Function Button.....	17
2.6.5	EDID Copy .....	18
2.6.6	Reset Button.....	18
3.	Installation .....	19
4.	Configuration.....	20
4.1	Basic Configuration .....	20
4.2	Advanced Configuration .....	20
4.2.1	Accessing through Serial.....	21
4.2.2	Accessing through Telnet.....	22
5.	Advanced Commands.....	23
5.1	Advanced IP Commands .....	25
5.2	Advanced Multicast IP Configuration .....	26
5.2.1	Transmitter.....	27
5.2.2	Receiver .....	27
5.3	Serial Extension .....	27
5.4	Telnet Extension .....	29
6	Accessing the Web Interface.....	31
6.1	Accessing the Transmitter without an IP Address.....	31

## Table of Contents

---

6.2	Accessing the Web Interface for a Transmitter or Receiver with an IP Address.....	33
7.	Video Wall Features .....	34
8.	Troubleshooting .....	41
8.1	Problems/Solutions.....	41
8.2	Contacting Black Box .....	41
8.3	Shipping and Packaging.....	42
Appendix:	Connector Pinouts.....	43

# Chapter 1: Specifications

---

## 1. Specifications

**Compliance** — FCC, TUV, CE, UL®, CSA, RoHS, WEEE

**Default IP Address** — 169.254.x.x (with no DHCP address)

*NOTE: To find the IP address of any receiver, simply connect to monitor and power up to get IP address. To find the IP address of any other receiver or transmitter, use Telnet to connect to any device in the system and use a "node-list" command or connect with the serial interface.*

**Efficiency Level** — Level IV

**Heat Dissipation** — 3.41 BTU/hr.

**HDCP** — Supported

**Leads Supported** — HDMI video and RS-232

**Maximum Distance from CPU to TX** — 16 ft. (5 m), HDMI

**Maximum Distance between TX and RX** — 328 ft. (100 m)\*

*\*NOTE: Use a network switch to get greater distances.*

**MTBF** — 90,000 hours

**User Controls** — (1) Reset button, (1) 16-position rotary selection switch, (1) Function button

**Connectors** — (1) HDMI female, (1) RJ-45 interconnect/LAN connection, (1) 2.1-mm barrel connector for power, (2) RJ-12 6P6C†

*†NOTE: Only 4 center pins are used at this time.*

**Indicators** — (1) LED for Link and Power; (1) LED for Network activity

**Temperature Tolerance** — Operating: 32 to 104° F (0 to 40° C);  
Storage: -4 to +140° F (-20 to +60° C)

**Humidity Tolerance** — Operating: 80%, noncondensing

**Maximum Altitude** — 10,000 ft. (3048 m)

**Power** — Input: 100–240 VAC, 50/60 Hz, 0.6 A;  
Output: 9 VDC;  
Consumption: 13.5 W;  
Power Supply Cord Length: 6 ft. (1.8 m)

**Size** — 0.98"H x 3.77"W x 5.11"D (2.5 x 9.6 x 12.9 cm)

**Weight** — 1.1 lb. (0.5 kg)



## 2. Overview

### 2.1 Introduction

The HDMI over LAN Extender is a perfect solution for audio and video signal extension via an existing Local Area Network (LAN) system. With multicast technology, one local unit can drive multiple remote units with no extra network load. There are 16 selectable channels that can be used to transmit to multiple receivers. In a network that supports IGMP (Layer 2 or Layer 3 switches), each channel can connect to 64 displays in video wall applications and unlimited displays in a multicast application using a standard IT Ethernet structure on a LAN system.

The HDMI over LAN Extender supports Full HD 1080p, is HDCP compliant, and is Blu-ray ready. It can handle applications that require greater distance, high speed transmission, real-time high video resolution, security, and noise immunity. It is ideal for situations that need live presentation, such as public broadcasting, education centers, boardrooms, etc.

### 2.2 Available Models

Three transmitter/receiver pairs are available, and they are ordered separately by part number. Choose from:

- MediaCentro IPX Multicast Transmitter (VX-HDMI-IP-MTX) and MediaCentro IPX Multicast Receiver (VX-HDMI-IP-MRX)
- MediaCentro IPX Unicast Transmitter (VX-HDMI-IP-UTX) and MediaCentro IPX Unicast Receiver (VX-HDMI-IP-URX)
- MediaCentro IPX Video Wall Transmitter (VX-HDMI-IP-VTX) and MediaCentro IPX Video Wall Receiver (VX-HDMI-IP-VRX)

### 2.3 Features

#### 2.3.1 Multicast, Unicast, and Video Wall Transmitters and Receivers

- Extends high definition video signal over LAN (dependent on network performance).
- Choose from 16 selections on the DIP rotary switch for pairing.
- Provides automatic EDID configuration.
- Uses well-developed Ethernet technology and TCP/IP communication protocol.
- Transmitters and Receivers are HDCP-compliant and Blu-ray ready.

## Chapter 2: Overview

---

- HDTV compatible; support 1080p, 1080i, 720p, 720i.
- Compatible with popular screen resolutions: XGA, SXGA, UXGA, WSXGA.

### 2.3.2 Multicast and Video Wall Transmitter and Receiver Functions

- Each transmitter can be multicast to up to 250 displays in multicast applications.
- Use an IGMP network to prevent network flooding.

### 2.3.3 Video Wall Transmitter and Receiver Exclusive Functions

The Video Wall versions enable video and audio to be sent to 250 outputs via IP. While it is possible to send the same video to all outputs, you can format the video wall so that separate sections of the video can be sent to different outputs. Basic settings allow for bezel compensation and different arrays of screens. Advanced settings allow for video manipulation to specific outputs.

## 2.4 What's Included

All units:

- (1) U.S. power supply
- (1) U.S. power cord
- (4) foot pads
- This user manual

**VX-HDMI-IP-MTX also has:**

- (1) MediaCentro IPX Multicast Transmitter
- (1) DB9 F to RJ-11 adapter
- (1) RJ-11 to RJ-11 cable

**VX-HDMI-IP-MRX also has:**

- (1) MediaCentro IPX Multicast Receiver

**VX-HDMI-IP-UTX also has:**

- (1) MediaCentro IPX Unicast Transmitter
- (1) DB9 F to RJ-11 adapter
- (1) RJ-11 to RJ-11 cable

**VX-HDMI-IP-URX also has:**

- (1) MediaCentro IPX Unicast Receiver

VX-HDMI-IP-VTX also has:

- (1) MediaCento IPX Video Wall Transmitter
- (1) DB9 F to RJ-11 adapter
- (1) RJ-11 to RJ-11 cable

VX-HDMI-IP-VRX also has:

- (1) MediaCento IPX Video Wall Receiver

### 2.5 Additional Items You Will Need

- HDCP-compliant monitors with HDMI interface for the HDCP video source
- CAT5/5e/6 UTP cable (EIA/TIA 568B industry-standard compliant)
- Layer 2 or 3 switches with IGMP or a dedicated network

### 2.6 Hardware Description

*NOTE: All six transmitter/receiver models have the same connectors, but with different functions.*

#### 2.6.1 Transmitters

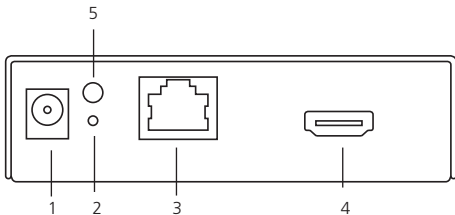


Figure 2-1. Transmitter front panel.

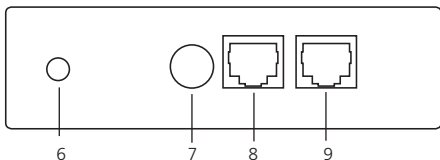


Figure 2-2. Transmitter back panel.

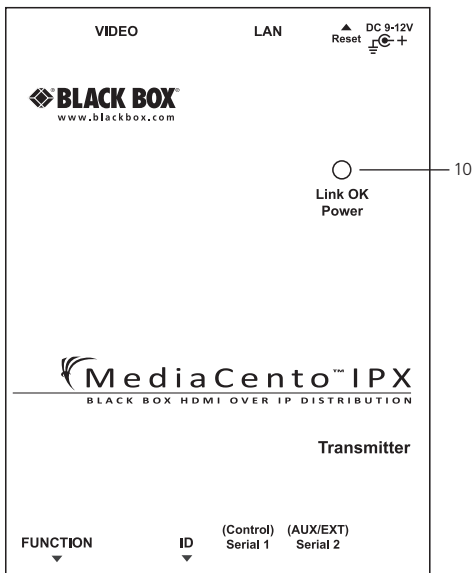


Figure 2-3. Transmitter top panel.

Table 2-1. Components of the Transmitters.

Number	Component	Description
1	Barrel connector for power	Links to power supply
2	Reset button	System reset
3	RJ-45 jack	Connects to the 10-/100-/1000-Mbps network switch
4	Video connector	Connects to the HDMI source
5	Network Status LED	Flashing: Connected to network Goes off once: Abnormal
6	Function button	See Section 2.6.4.
7	Rotary switch	Set up an identical position for all units
8	RJ-12 connector	Serial port 1: For system control
9	RJ-12 connector	Serial port 2: For data transfer
10	Power/Link LED	Green: Power on Interlaced flashing Blue + Green: Connected to network Blue: Connected to receiver

### 2.6.2 Receivers

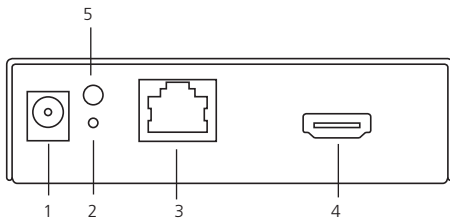


Figure 2-4. Receiver front panel.

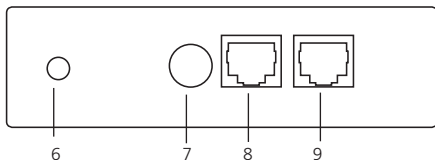


Figure 2-5. Receiver back panel.

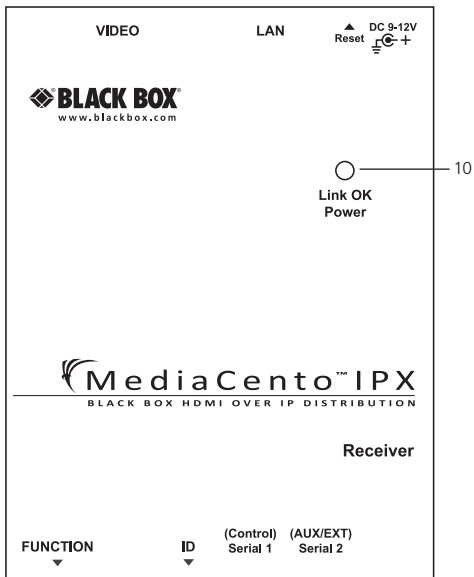


Figure 2-6. Receiver top panel.

## Chapter 2: Overview

---

Table 2-2. Components of the Receivers.

Number	Component	Description
1	Barrel connector for power	Links to power supply
2	Reset button	System reset
3	RJ-45 jack	Connects to the 10-/100-/1000-Mbps network switch
4	Video connector	Connects to the HDMI monitor
5	Network Status LED	Flashing: Connected to network Goes off once: Abnormal
6	Function button	See Section 2.6.4.
7	Rotary switch	Set up an identical position for all units
8	RJ-12 connector	Serial port 1: For system control
9	RJ-12 connector	Serial port 2: For data transfer
10	Power/Link LED	Red: Power on Interlaced flashing Blue + Red: Connected to network Blue: Connected to transmitter

### 2.6.3 Indicators

The LEDs on the extender units show the real-time status indicating the linking and communication between the Transmitter/Sender unit and the Receiver unit. Users can identify the current status through the LED indicators on the unit.

The quality of the output signal will depend largely upon the quality of the video



source, cable, and display device used. Low-quality cables degrade output signals, causing elevated noise levels. Use the proper cable and make sure the display device can handle the resolution and refresh rate selected.

*NOTE: The system will disable the video output signal when it detects non-HDCP-compliant display(s) trying to play on the HDCP video source. All the connected output displays MUST be HDCP compliant when the video source is HDCP compliant.*

### 2.6.4 Function Button

The Function button on the extender units operates as described in Table 2-3.

Table 2-3. Function button.

Action	Description
Press for 1 second.	Toggle between graphics and video mode.
<ol style="list-style-type: none"><li>1. Press and hold the Function button.</li><li>2. Apply power to the receiver unit.</li><li>3. Release right after the Network Status LED starts blinking.</li></ol>	EDID copy (Receiver unit only!)

## Chapter 2: Overview

---

### 2.6.5 EDID Copy

Copying the EDID will enable the receiver to send correct resolutions to your output. Although the default EDID will work in most cases, some monitors will not work with it.

*NOTE: EDID copy is required for DVI monitors.*

To copy the EDID:

1. To copy EDID from a specific receiver to a specific transmitter, both receiver and transmitter must be configured to the same channel.
2. Hold down the function button on the receiver and plug in the power.
3. Continue to hold down the function button until the network LED starts blinking. EDID is now copied to the receiver.

### 2.6.6 Reset Button

To reset the system, press the "Reset" button once. The system will start to reset after a short press on the reset button.

### 3. Installation

#### **WARNINGS:**

*Make sure that all devices are powered off before connecting to the unit.*

*Make sure all devices you will connect are properly grounded.*

*Place cables away from fluorescent lights, air conditioners, and machines.*

*NOTE: EDID copy is required for DVI monitors.*

#### **Installing the Transmitter and Receiver**

1. Connect a video source (PC, Blu-ray, etc.) to the Transmitter/Sender Unit.

2. Connect the monitor to the Receiver Unit with an HDMI cable.

*NOTE: IF the source has HDCP, the monitor must support HDCP.*

3. Connect transmitter and receivers to the desired network with a Layer 2/3 IGMP switch using CATx cables.

4. Set matching TX/RX to the same rotary position (see Section 4.1, Basic Configuration).

5. Apply the proper power to all connecting devices.

6. Monitors connected to receiver units will show IP address before connecting.

*NOTE: Figure 3-1 shows this installation.*

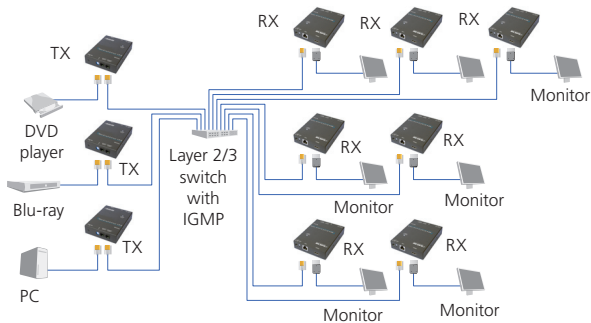


Figure 3-1. Installation diagram.

## Chapter 4: Configuration

---

### 4. Configuration

#### 4.1 Basic Configuration

The rotary switch on each device decides the channel of the device when booting.

For a receiver or receivers to connect to a transmitter, they must be on the same channel. Each transmitter should be on a separate switch setting and the receivers should be on the same switch setting as the desired transmitter. After you change the switch setting, you must reboot the device for the changes to take effect.

#### 4.2 Advanced Configuration

Advanced configuration is not needed but is available.

You can access devices through the serial interface or Telnet for advanced configuration of network settings.

A serial/Telnet client is needed.

To see the IP address of a receiver:

Connect a receiver to a monitor and power on. Device information, including the IP address, will be in the lower right corner. Reset the receiver if needed. If the receiver is set to DHCP IP mode, a network connection is required.

### 4.2.1 Accessing through Serial

1. Using the client, select “serial” and enter “115200” for the speed (baud rate).

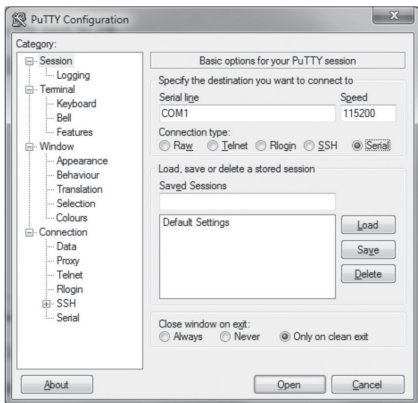


Figure 4-1. PuTTY configuration screen using serial.

2. No username or password is required. Just press enter.

## Chapter 4: Configuration

---

### 4.2.2 Accessing through Telnet

1. Using the client, enter in the IP address of the device.
2. Change the port to 24.

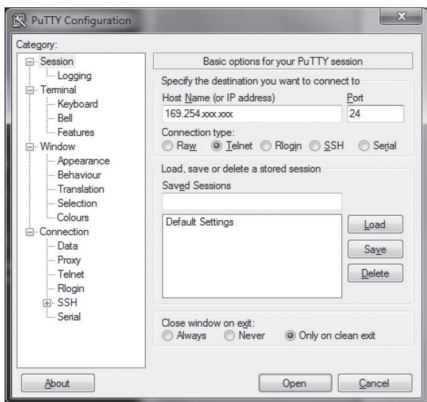


Figure 4-2. PuTTY configuration screen using Telnet.

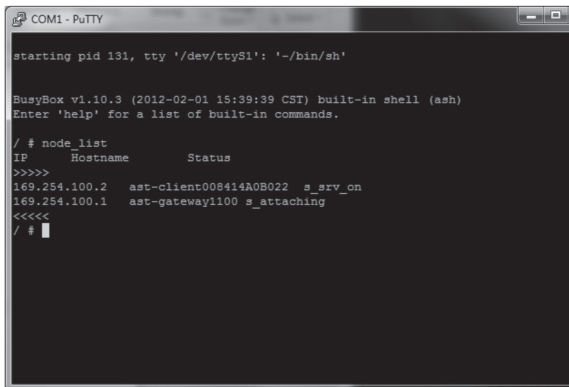
3. The default password is root.

### 5. Advanced Commands

These are advanced configurations and require knowledge of IP networking protocols and multicasting. Do not attempt to run any commands, modify files, or change any other settings apart from the specific configurations noted here.

All commands are case-sensitive.

To list names and IP information of all connected MediaCento IPX devices, type in:  
node\_list



```
COM1 - PuTTY
starting pid 131, tty '/dev/ttyS1': '-/bin/sh'

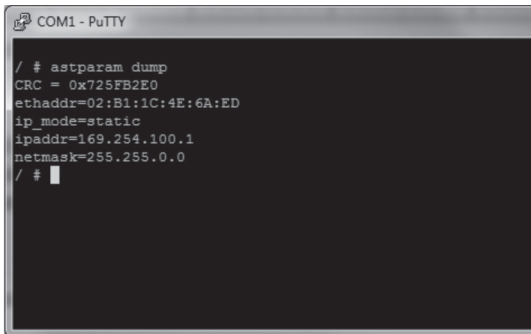
BusyBox v1.10.3 (2012-02-01 15:39:39 CST) built-in shell (ash)
Enter 'help' for a list of built-in commands.

/ # node_list
IP      Hostname      Status
>>>>>
169.254.100.2  ast-client008414A0B022  s_srv_on
169.254.100.1  ast-gateway1100  s_attaching
<<<<<
/ # █
```

Figure 5-1. Names and IP information list.

To view all current configured parameters, type in:

astparam dump



```
COM1 - PuTTY
/ # astparam dump
CRC = 0x725FB2E0
ethaddr=02:B1:1C:4E:6A:ED
ip_mode=static
ipaddr=169.254.100.1
netmask=255.255.0.0
/ #
```

Figure 5-2. Current configured parameters list.

To reset to factory default, setting the IP mode to autoip and removing any overrides, type in:

```
reset_to_default.sh
```

To change the baud rate of the serial extension interface, type in:

```
stty X -F /dev/ttyS0
```

(replace X with desired baud rate)

To disable/enable the link for a specific device, type in:

```
ast_send_event -1 e_stop_link
```

```
ast_send_event -1 e_reconnect
```



### 5.1 Advanced IP Commands

Each device has three possible modes of establishing an IP address: autoip, dhcp, and static.

1. AutoIP is the default mode and it will always automatically assign available IP addresses in the private IP domain 169.254.xxx.xxx

*NOTE: The MediaCentO IPX uses the Avahi zeroconf protocol to find an available IP in the 169.254.xxx.xxx range.*

2. DHCP client gets an address from the local DHCP server.

*CAUTION: Make sure a DHCP client is connected or problems will occur.*

3. Static allows you to manually change the IP address and netmask of the device. This requires further input before reboot.

To change the IP mode, type in:

astparam s ip\_mode <mode> (where <mode> is autoip, dhcp, or static)

astparam save (saves changes)

reboot (reboots the device)

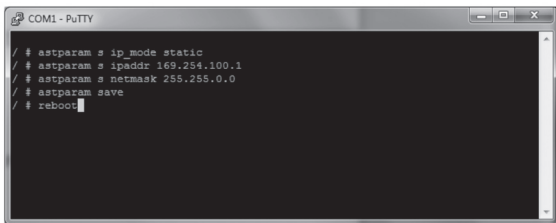
If static is selected, the following commands are needed before reboot. Type in:

astparam s ipaddr xxx.xxx.xxx.xxx (enter IP address for x's)

astparam s netmask xxx.xxx.xxx.xxx (enter netmask for x's)

astparam save (saves changes)

reboot



```
COM1 - PuTTY
/ # astparam s ip_mode static
/ # astparam s ipaddr 169.254.100.1
/ # astparam s netmask 255.255.0.0
/ # astparam save
/ # reboot
```

Figure 5-3. COM1 PuTTY screen.

## Chapter 5: Advanced Commands

---

### 5.2 Advanced Multicast IP Configuration

Predefined multicast addresses can be selected by using the rotary switch buttons on the devices (recommended). See Table 5-1 for listing of channels:

Table 5-1. Channel listing for multicast address.

	Multicast Address				Channel IDs
	B0	B1	B2	B3	ID
225.0.	0.	0	0	0	0
225.0.	1.	0	0	0	1
225.0.	0.	1	0	0	2
225.0.	1.	1	0	0	3
225.0.	0.	0	1	0	4
225.0.	1.	0	1	0	5
225.0.	0.	1	1	0	6
225.0.	1.	1	1	0	7
225.0.	0.	0	0	1	8
225.0.	1.	0	0	1	9
225.0.	0.	1	0	1	A
225.0.	1.	1	0	1	B
225.0.	0.	0	1	1	C
225.0.	1.	0	1	1	D
225.0.	0.	1	1	1	E
225.0.	1.	1	1	1	F

To override the DIP rotary switch, use the commands shown on the next page for each device:

*NOTE: B0, B1, B2, and B3 refer to the values in Table 5-1.*

### 5.2.1 Transmitter

To change the multicast group IP, type in:

```
astparam s multicast_ip 225.0.B0.B1B2B3
```

To change the hostname ID of the transmitter, type in:

```
astparam s hostname_id B0B1B2B3
```

```
ast_send_event -1 e_chg_hostname
```

To override DIP rotary switch setting on bootup:

```
astparam s reset_ch_on_boot n      (space between boot and the n)
astparam save
reboot
```

### 5.2.2 Receiver

To change the multicast group IP, type in:

```
astparam s multicast_ip 225.0.B0.B1B2B3
```

To change the transmitter channel read:

```
astparam s ch_select B0B1B2B3
```

To override DIP rotary switch setting on bootup, type in:

```
astparam s reset_ch_on_boot n      (space between boot and the n)
astparam save
reboot
```

## 5.3 Serial Extension

Serial extension can be done from one transmitter to all receivers linked. Telnet serial extension is also available as a replacement of serial. Serial extension information:

Default baud rate: 9600 (unless changed manually)

Data bits: 8

Parity: Even

Stop bits: 1

## Chapter 5: Advanced Commands

---

Flow control: None

*NOTE: This is a two-way communication. The transmitter will receive any data sent from the serial devices connected to the receivers.*

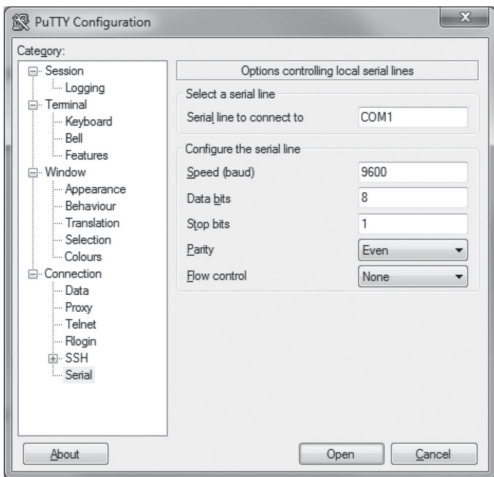


Figure 5-4. Options controlling local serial lines.

For both transmitter and receiver units, the added RJ-11 to DB9 serial cable needs to be connected to the second serial port on the devices.

### 5.4 Telnet Extension

Telnet serial extension allows for serial output from a receiver through a Telnet connection. This disables serial input coming from a transmitter but allows for 2-way communication to specific devices.

*NOTE: Telnet extension requires custom firmware. For details, contact Black Box Technical Support at 724-746-5500 or info@blackbox.com.*

To set up a Telnet extension:

1. Using a Telnet protocol, use Port 6752.

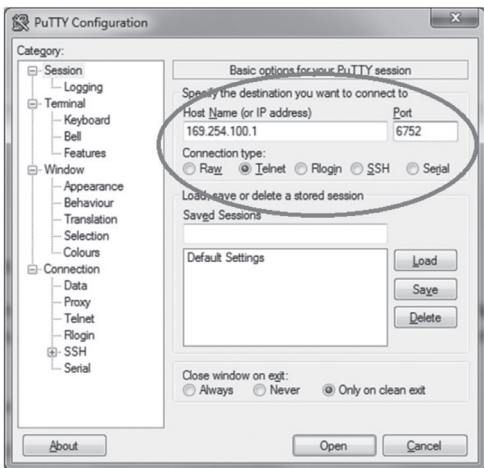


Figure 5-5. Setting up Telnet extension using a Telnet protocol.

## Chapter 5: Advanced Commands

---

2. Turn off line echo and local line editing.

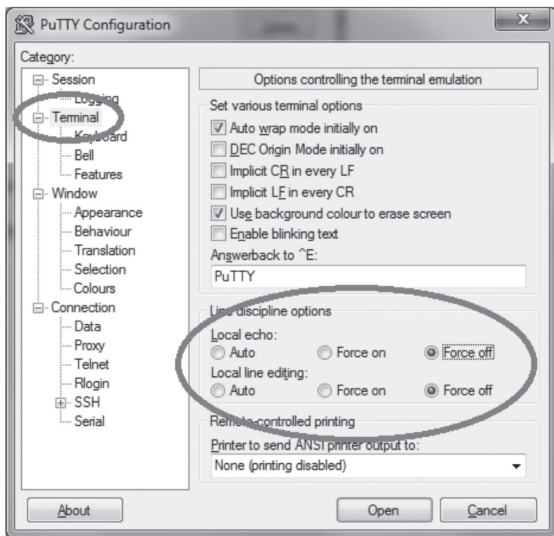


Figure 5-6. Turning off line echo and local line editing.

### 6. Accessing the Web Interface

The Web interface can be used to view information about the device, upload a firmware file to the device, and for video wall transformers configuration. The Web interface will not give network information or screen previews.

#### 6.1 Accessing the Transmitter without an IP Address

You can access the transmitter directly with a serial connection, and find the IP address using the "node-list" command. See Chapter 5. To connect without an IP address or serial connection, access the Web interface.

Bonjour® is needed to access the Web interface. Apple® products usually have this installed. If needed, you can download the free version from <http://www.apple.com/kb/DL999> and clicking the print server link.

1. Run Bonjour.
2. Configure the control PC's network setting as 169.254.xxx.xxx IP domain with netmask 255.255.0.0. Default gateway and DNS can be left blank. For Windows® 7: <http://windows.microsoft.com/en-us/windows7/change-tcp-ip-settings>.
3. Open a Web browser and insert the address: <http://ast-gatewayXXXX.local>. The four digits after ast-gateway depend on the position of the Rotary Switch you've set. Please refer to Table 6-1. For example, if the position is set up as 7, then the address should be <http://ast-gateway1110.local>

## Chapter 6: Accessing the Web Interface

---

Table 6-1. Rotary Switch position settings.

Position	Four-digit setting	Position	Four-digit setting
0	0000	8	0001
1	1000	9	1001
2	0100	A	0101
3	1100	B	1101
4	0010	C	0011
5	1010	D	1011
6	0110	E	0111
7	1110	F	1111

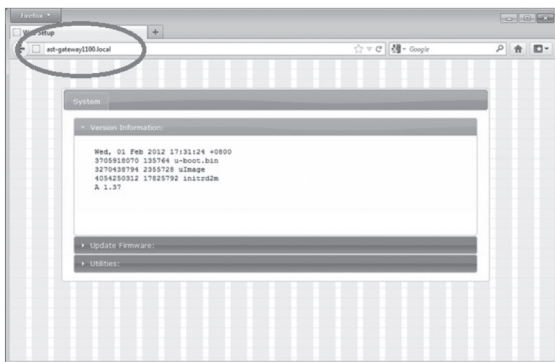


Figure 6-1. Setup screen (without IP address).



### 6.2 Accessing the Web Interface for a Transmitter or Receiver with an IP Address

1. Configure the control PC's network setting as 169.254.xxx.xxx IP domain with netmask 255.255.0.0. Default gateway and DNS can be left blank. For Windows 7: <http://windows.microsoft.com/en-us/windows7/change-tcp-ip-settings>
2. Open a Web browser and insert the IP address of the device.

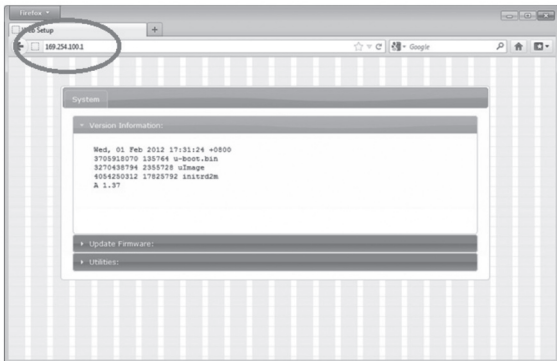


Figure 6-2. Web setup screen (with IP address).

## Chapter 7: Video Wall Features

---

### 7. Video Wall Features

Using the Video Wall features, you can send video and audio to 250 outputs through IP. Format the video wall so that separate sections of the video can be sent to different outputs. Basic settings allow for bezel compensation and different arrays of screens. Advanced settings allow for video manipulation to specific outputs. Figure 7-1 shows a typical application:

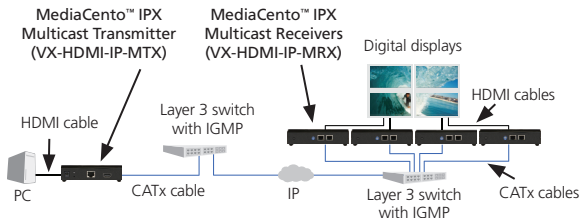


Figure 7-1. Sample installation.

### Video Wall Setup

Figure 7-2 shows the Basic Setup screen for the VX-HDMI-IP-VTX and VRX. Table 7-1 describes its components.

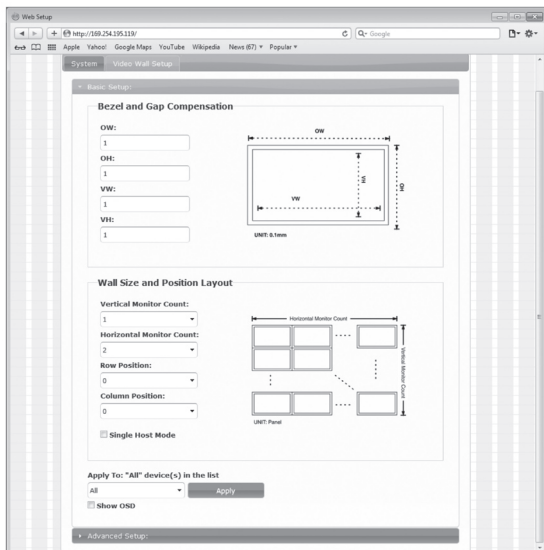


Figure 7-2. Basic Setup screen.

## Chapter 7: Video Wall Features

---

Table 7-1. Basic Setup screen components.

Component	Description
Bezel and Gap Compensation	Dimensions of screen (inside and outside width and height).
Wall Size and Position Layout	Select number of vertical and/or horizontal monitors, row position, and column position.
Apply To: "All" device(s) in the list	Click on the "Apply" button to apply settings.
Show OSD checkbox	Check this box to output each receiver's specific number to the connected monitor.

## Chapter 7: Video Wall Features

Figure 7-3 shows the Advanced Setup screen. Table 7-2 describes its components.

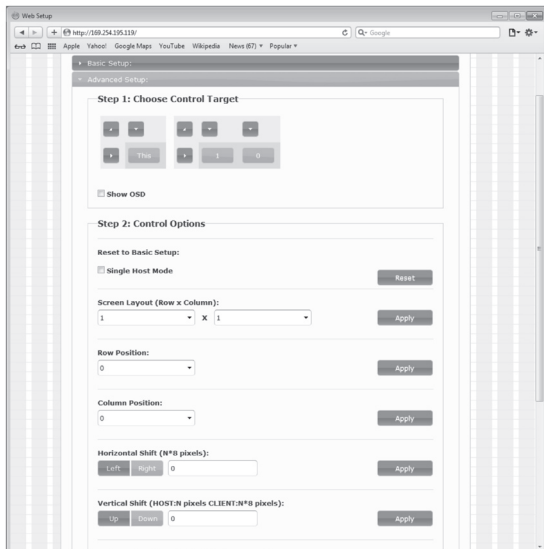


Figure 7-3. Advanced Setup screen.

## Chapter 7: Video Wall Features

---

Table 7-2. Advanced Setup screen components.

Component	Description
Step 1: Choose control target	Click on the arrows and buttons to select a control target.
Show OSD checkbox	Check this box to output each receiver's specific number to the connected monitor.
Step 2: Control options	
Reset to Basic Setup, Single Host Mode checkbox	Check this box, then press the "Reset" button..
Screen Layout (Row x Column)	Select the number of rows and columns from the drop-down menu, then click on the "Apply" button.
Row Position	Select the row from the drop-down menu, then click on the "Apply" button.
Column Position	Select the column from the drop-down menu, then click on the "Apply" button.
Horizontal Shift (N*8 pixels)	Use to shift video output horizontally, then click on the "Apply" button.
Vertical Shift (HOST: N pixels CLIENT: N*8 pixels)	Use to shift video output vertically, then click on the "Apply" button.

## Chapter 7: Video Wall Features

---

Figure 7-4 shows the Advanced Commands screen. Table 7-3 describes its components.

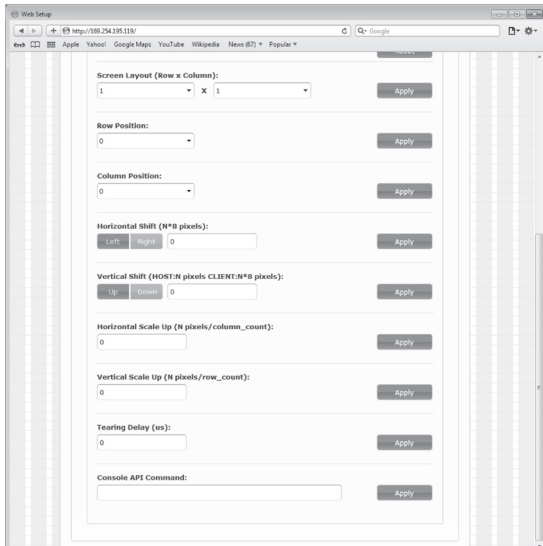


Figure 7-4. Advanced Commands screen.

## Chapter 7: Video Wall Features

---

Table 7-3. Advanced Commands screen components.

Component	Description
Screen Layout (Row x Column)	Select the number of rows and columns from the drop-down menu, then click on the "Apply" button.
Row Position	Select the row from the drop-down menu, then click on the "Apply" button.
Column Position	Select the column from the drop-down menu, then click on the "Apply" button.
Horizontal Shift (N*8 pixels)	Use to shift video output horizontally, then click on the "Apply" button.
Vertical Shift (HOST: N pixels CLIENT: N*8 pixels)	Use to shift video output vertically, then click on the "Apply" button.
Horizontal Scale Up (N pixels/ column_count)	Use to scale video output horizontally, then click on the "Apply" button.
Vertical Scale Up (N pixels/ column_count)	Use to scale video output vertically, then click on the "Apply" button.
Tearing Delay ( $\mu$ s)	Use to compensate for screen tearing, then click on the "Apply" button.
Console API Command	Type in the Console API Command, then click on the "Apply" button.



### 8. Troubleshooting

#### 8.1 Problem/Solutions

**Problem:** No video on monitor at bootup.

**Solutions:**

1. Check the device power using the Link/Power LED.
2. Check the network connection using the Network LED.
3. Check the video connection using the Link/Power LED.
4. Make sure that the DIP rotary switch is set to the correct ID.  
*NOTE: If manually changed, make sure the IDs match.*
5. If you're using a mix of multicast and unicast units, make sure they match up correctly.
6. Set your display device's (TV, monitor, etc.) input source as HDMI.
7. Check the PC BIOS configuration for the video output setting.
8. Connect your computer to the HDMI Display DIRECTLY to check if the video signal gets through.
9. Make sure the DVI monitor is using the correct EDID. See Section 2.6.5 for details.

#### 8.2 Contacting Black Box

If you determine that your MediaCentO IP is malfunctioning, do not attempt to alter or repair the unit. It contains no user-serviceable parts. Contact Black Box Technical Support at 724-746-5500 or [info@blackbox.com](mailto:info@blackbox.com).

Before you do, make a record of the history of the problem. We will be able to provide more efficient and accurate assistance if you have a complete description, including:

- the nature and duration of the problem.
- when the problem occurs.
- the components involved in the problem.
- any particular application that, when used, appears to create the problem or make it worse.

## Chapter 8: Troubleshooting

---

### 8.3 Shipping and Packaging

If you need to transport or ship your MediaCento IP:

- Package it carefully. We recommend that you use the original container.
- If you are returning the unit, make sure you include everything you received with it. Before you ship for return or repair, contact Black Box to get a Return Authorization (RA) number.

### Appendix. Connector Pinouts

Figure A-1 shows the DB9 to RJ-12 or RJ-11 connector pinouts.

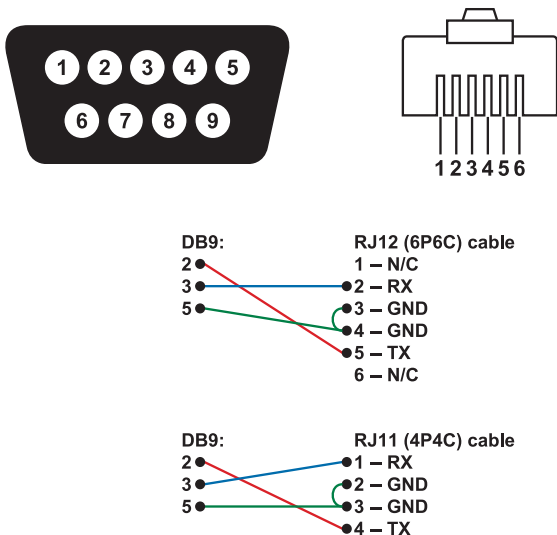


Figure A-1. DB9 to RJ-12 6P6C or RJ-11 (4P4C) cable pinout.

**Black Box Tech Support: FREE! Live. 24/7.**

Tech support the  
way it should be.



Great tech support is just 30 seconds away  
at 724-746-5500 or [blackbox.com](http://blackbox.com).



## About Black Box

Black Box provides an extensive range of networking and infrastructure products. You'll find everything from cabinets and racks and power and surge protection products to media converters and Ethernet switches all supported by free, live 24/7 Tech Support available in 30 seconds or less.

© Copyright 2012. Black Box Corporation. All rights reserved..

VX-HDMI-IP-MTX version 2

---

724-746-5500 | [blackbox.com](http://blackbox.com)

Download from [Www.Somanuals.com](http://Www.Somanuals.com). All Manuals Search And Download.

## Free Manuals Download Website

<http://myh66.com>

<http://usermanuals.us>

<http://www.somanuals.com>

<http://www.4manuals.cc>

<http://www.manual-lib.com>

<http://www.404manual.com>

<http://www.luxmanual.com>

<http://aubethermostatmanual.com>

Golf course search by state

<http://golfingnear.com>

Email search by domain

<http://emailbydomain.com>

Auto manuals search

<http://auto.somanuals.com>

TV manuals search

<http://tv.somanuals.com>