



RJ45 PushPull Connector Installation Guide

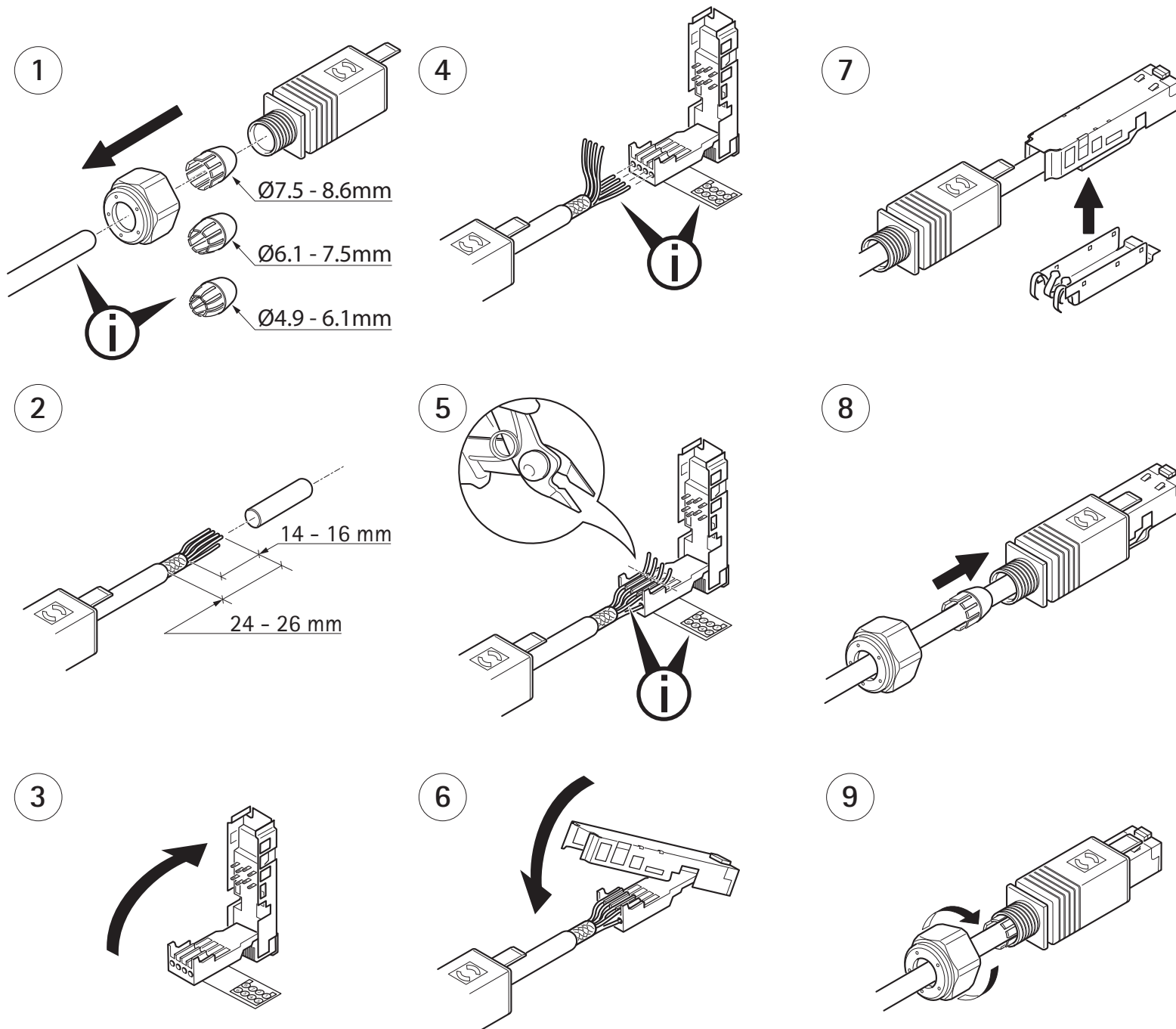
Part. No. 39680

www.axis.com

Technical specifications

CAT6/Performance class E_A
suitable for 1/10 Gigabit Ethernet

Termination:	IDC, tool-less field-assembly
Protection level:	IP66
Mating face:	RJ45 acc. IEC 60603-7
Wire gauge data:	AWG 27-22 stranded/solid
Wire insulation:	max. 1.5mm
Temperature range:	-40 °C to +70 °C
Mating cycles:	min. 750
Housing material:	Thermoplastic, black
Cable diameter:	4.9-8.6mm



Free Manuals Download Website

<http://myh66.com>

<http://usermanuals.us>

<http://www.somanuals.com>

<http://www.4manuals.cc>

<http://www.manual-lib.com>

<http://www.404manual.com>

<http://www.luxmanual.com>

<http://aubethermostatmanual.com>

Golf course search by state

<http://golfingnear.com>

Email search by domain

<http://emailbydomain.com>

Auto manuals search

<http://auto.somanuals.com>

TV manuals search

<http://tv.somanuals.com>