

# AT88SC0104CRF to AT88SC6416CRF

## FAMILY OF CRYPTORF™ SECURITY CHIPS

The AT88SC0104CRF to AT88SC6416CRF is a family of contactless secure memory devices with advanced security and cryptography.



### Key Features

- A Family of Devices with User Memories from 1 Kbit to 64 Kbits:  
1K, 2K, 4K, 8K, 16K, 32K, 64K Bits
- Symmetrical Dynamic Mutual Authentication with 64-bit Cryptographic Keys
- Encrypted Passwords with Attempts Counters
- Stream Encryption Ensures Data Privacy
- Antitearing Recovers Data in Case of Power Loss
- Contactless 13.56-MHz Interface, Compliant with ISO/IEC 14443 Type B
- Integrated 82 pF Tuning Capacitor
- High Reliability Memory, 100K Write Cycles with 10 Year Data Retention

### Applications

- Health Care Cards
- Security Focus ID Cards  
(Biometric ID Cards, Passports, etc.)
- Drivers Licenses
- E-purses
- Multi-applications



Atmel Corporation  
2325 Orchard Parkway  
San Jose, CA 95131  
TEL 1(408) 441-0311  
FAX 1(408) 487-2600

Regional Headquarters  
**Europe**  
Atmel Sarl  
Route des Arsenaux 41  
Case Postale 80  
CH-1705 Fribourg  
Switzerland  
TEL (41) 26-426-5555  
FAX (41) 26-426-5500

**Asia**  
Room 1219  
Chinachem Golden Plaza  
77 Mody Road Tsimshatsui  
East Kowloon  
Hong Kong  
TEL (852) 2721-9778  
FAX (852) 2722-1369

**Japan**  
9F, Tonetsu Shinkawa Bldg.  
1-24-8 Shinkawa  
Chuo-ku, Tokyo 104-0033  
Japan  
TEL (81) 3-3523-3551  
FAX (81) 3-3523-7581

e-mail  
literature@atmel.com

Web Site  
http://www.atmel.com

**Atmel's CryptoRF™ is a new secure RF family of devices with memory densities from 1 Kbit (AT88SC0104CRF) to 64 Kbits (AT88SC6416CRF) for contactless smart card applications. This new family of secure RF circuits makes available to the industry a low cost, high security chip solution that fills the void between simple RFID memories and RF microcontrollers.**

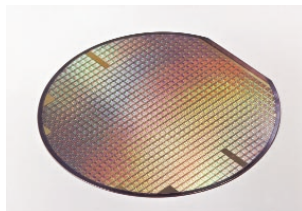
## Security

This device contains a random number generator and proprietary algorithm that generates new keys for each authentication and encryption activation. Read and Write access requirements for each user zone are programmed by the customer during card personalization. The device's secret keys for mutual authentication and encryption are defined using a customer selected algorithm. Only a computer knowing both the CryptoRF and customer algorithms can provide the required authentication codes.

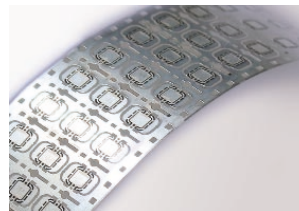
## Product Features

- Contactless 13.56 MHz RF Communications Interface
  - ISO/IEC 14443-2: 2001 Type B Compliant
  - ISO/IEC 14443-3: 2001 Type B Compliant Anticollision Protocol
  - Command Set Optimized for Multicard RF Communications
  - Tolerant of Type A Signaling for Multiprotocol Applications
  - Operating Distance Up to 10 cm
- Integrated 82 pF Tuning Capacitor
- User Memory of 1 Kbit to 64 Kbit
  - User Memory Configured as 4, 8, or 16 User Zones
  - Byte, Page, and Partial Page Write Modes
  - Self-timed Write Cycle
- 2 Kbit (256-byte) Configuration Zone
  - User-programmable Application Family Identifier (AFI)
  - User-defined Anticollision Polling Response
  - User-defined Keys and Passwords
- High-Security Features
  - 64-bit Mutual Authentication Protocol (under exclusive patent license from ELVA)
  - Encrypted Checksum
  - Stream Encryption
  - Four Key Sets for Authentication and Encryption
  - Eight Sets of Two 24-bit Passwords
  - Password and Authentication Attempts Counters
  - Selectable Access Rights by Zone
  - Write Lock Mode
  - Antitearing Function
  - Tamper Sensors
- High Reliability
  - Endurance: 100,000 Write Cycles
  - Data Retention: 10 Years
  - Operating Temperature: -40 to +85°C

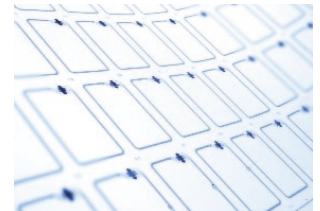
## Package Options



Wafer Form, Thinned to 6 Mils



RF Smart Card Modules



Prelaminate Sheets

## Development Tools

AT88SC6416CRF-EK Evaluation Kit, including RF reader and software  
AT88SC6416CRF-DK Development Kit, including RF reader and software

Atmel contact: [cryptorf@atmel.com](mailto:cryptorf@atmel.com)



© Atmel Corporation 2003. All rights reserved. Atmel® and combinations thereof are registered trademarks and CryptoRF™ is a trademark of Atmel Corporation or its subsidiaries. Other terms and product names may be the trademarks of others.

5038A-CRPF-04/03/10K

## Free Manuals Download Website

<http://myh66.com>

<http://usermanuals.us>

<http://www.somanuals.com>

<http://www.4manuals.cc>

<http://www.manual-lib.com>

<http://www.404manual.com>

<http://www.luxmanual.com>

<http://aubethermostatmanual.com>

Golf course search by state

<http://golfingnear.com>

Email search by domain

<http://emailbydomain.com>

Auto manuals search

<http://auto.somanuals.com>

TV manuals search

<http://tv.somanuals.com>