

### HURON™ 4' RECESS BATH

- 0131.012 Right hand outlet
- 0133.017 Left hand outlet

#### Product Features:

- Acid resisting, enameled steel construction
- One-piece recess bath
- Integral apron
- End drain outlet
- Full slip-resistant surface
- Straight tiling flange

#### Nominal Dimensions:

1181 x 686 x 394mm  
(46-1/2" x 27" x 15-1/2")

#### Compliance Certifications -

#### Meets or Exceeds the Following Specifications:

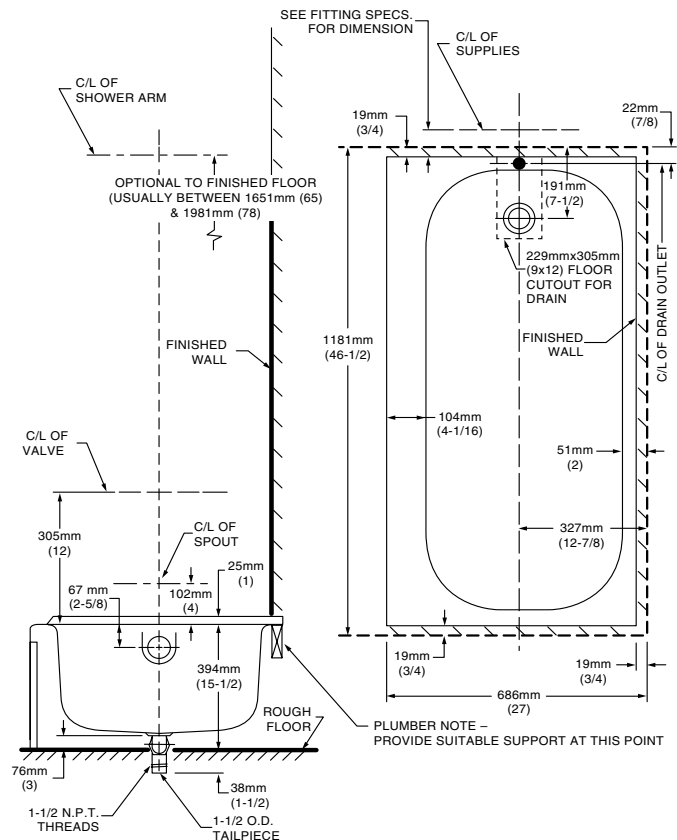
- ASME A112.19.4 for Enameled Steel Plumbing Fixtures
- ASTM F-462 for Slip-resistant Bathing Facilities



#### To Be Specified:

- Color:
- Bath Faucet\*:
- Faucet Finish:
- Drain:

\* See faucet section for additional models available



#### NOTES:

0133.017 LEFT HAND OUTLET (SHOWN).  
0131.012 RIGHT HAND OUTLET (REVERSE DIMENSIONS).  
REFER TO INSTALLATION INSTRUCTIONS SUPPLIED WITH BATH FOR ADDITIONAL INFORMATION.  
SHOWN WITH POP-UP C.D. & O.  
FITTINGS NOT INCLUDED AND MUST BE ORDERED SEPARATELY.  
CONCEALED PIPING NOT INCLUDED.

**IMPORTANT:** Dimensions of fixtures are nominal and may vary within the range of tolerances established by ANSI Standard A112.19.4. These measurements are subject to change or cancellation. No responsibility is assumed for use of superseded or voided leaflet.

## Free Manuals Download Website

<http://myh66.com>

<http://usermanuals.us>

<http://www.somanuals.com>

<http://www.4manuals.cc>

<http://www.manual-lib.com>

<http://www.404manual.com>

<http://www.luxmanual.com>

<http://aubethermostatmanual.com>

Golf course search by state

<http://golfingnear.com>

Email search by domain

<http://emailbydomain.com>

Auto manuals search

<http://auto.somanuals.com>

TV manuals search

<http://tv.somanuals.com>