

**RONDO ELITE™ WHIRLPOOL**

Comfortable two person oval design with dual back support positions and factory installed grab bar

- 7242E (specify White 020, Bone 021, or Linen 222)**
  - Acrylic with fiberglass reinforcement
  - 2.0 HP self-draining pump/motor with dry run seal
  - Ten multi-directional and flow adjustable jets including:
    - Two high performance Ideal-flow™ Jets
    - Eight interchangeable Flex-jets™
  - Three silent air volume controls
  - Deck-mounted On/Off control
  - Complete factory installed and tested whirlpool system
  
- 7242EC (specify White 020, Bone 021, or Linen 222)**
  - Same as above with the StayClean™ whirlpool system featuring Antimicrobial AlphaSan®

Nominal Dimensions: 1816 x 1067 x 546mm  
(71-1/2" x 42" x 21-1/2")



**Components Needed:**

- Bath Filler\*: (specify finish)
- Bath Drain: BATH-DRAIN (specify Chrome 002, Polished Brass 099, or Satin 295)

**Custom Accessories Available:**

- Pulse Jet Kit: PULSE-JET (two per kit, specify White 020, Bone 021, or Linen 222)
- Soft Jet Kit: SOFT-JET (two per kit, specify White 020, Bone 021, or Linen 222)
- E-Z-Install™ Whirlpool Heater - EZHEAT-100

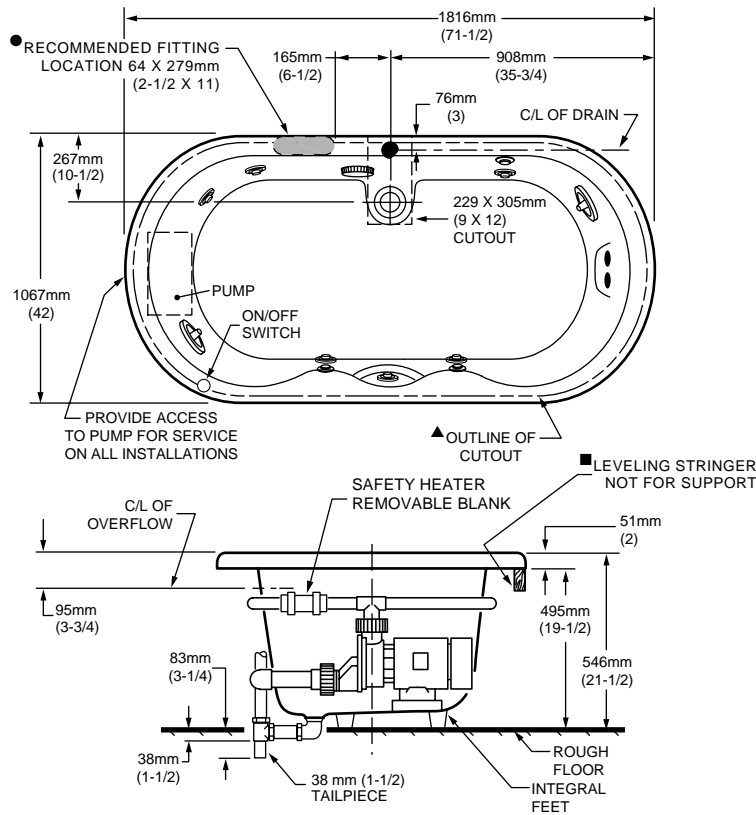
\* See American Standard Faucet Selector

**Compliance Certifications - Meets or Exceeds the Following Specifications:**

- Underwriters Laboratories - Hydromassage Bathtubs UL 1795
- ASME A112.19.7M for Whirlpool Appliances
- ANSI Z124.1 for Plastic Bathtubs
- ASTM E162 for Flammability
- NFPA 258 for Smoke Density

**NOTE:** Roughing-in dimensions and product specifications shown on reverse side of page.

NOTE: E-Z-Install™ Whirlpool Heater is designed to maintain water temperature during operation. It will not heat cold water to desired bathing temperature.



GENERAL SPECIFICATIONS FOR 7242E WHIRLPOOL	
INSTALLED SIZE	71-1/2 x 42 x 21-1/2 In (1816 x 1067 x 546mm)
WEIGHT	94 Lbs. (43 Kg.)
WEIGHT w/WATER	818 Lbs. (371 Kg.)
GAL. TO OVERFLOW	87 Gal. (330 L)
WHIRLPOOL MIN. OPERATING VOL.	67 Gal. (254 L)
BATHING WELL AT SUMP	45 x 25 In. (1143 x 635mm)
BATHING WELL AT RIM	60 x 30 In. (1524 x 762mm)
WATER DEPTH TO OVERFLOW	14-7/8 In (378mm.)
FLOOR LOADING (PROJECTED AREA)	39 Lbs./Sq.Ft. (191 Kgs./Sq.m)
PTS.	30.3
CUBE (FT <sup>3</sup> )	58.7
WHIRLPOOL ELECTRICAL SPECIFICATIONS	
PUMP	2.1 HP, 14.4 AMPS, 120.

**NOTES:** BATH CAN BE INSTALLED EITHER ABOVE OR BELOW FLOOR LINE AS PIER, ISLAND OR PENINSULA TYPE INSTALLATION. SUPPORT OF BATH BY INTEGRAL FEET. NO ADDITIONAL SUPPORT REQUIRED. SUPPORT AND ENCLOSING MATERIAL BY OTHERS.

■ REFER TO INSTALLATION INSTRUCTIONS SUPPLIED WITH WHIRLPOOL FOR ADDITIONAL INFORMATION.

CUTOUT TEMPLATE PROVIDED IN SHIPPING BOX, MAY BE REQUESTED SEPARATELY.

PROVIDE SUITABLE REINFORCEMENT FOR ALL WALL SUPPORTS.

● FITTINGS AND TWIST GRAB BAR NO. 750565-000 NOT INCLUDED, MUST BE ORDERED SEPARATELY.

● IF INSTALLING A DECK-MOUNTED FITTING, BEFORE DRILLING ANY HOLES: CHECK FOR INTERFERENCE WITH CIRCULATING SYSTEM PIPING, DRAIN OVERFLOW, AND APRON INSTALLATION. MOUNTING HOLES DRILLED BY INSTALLER.

**IMPORTANT:** Dimensions of fixtures are nominal and may vary within the range of tolerances established by ANSI Standard Z124.1. These measurements are subject to change or cancellation. No responsibility is assumed for use of superseded or voided leaflet.

## Free Manuals Download Website

<http://myh66.com>

<http://usermanuals.us>

<http://www.somanuals.com>

<http://www.4manuals.cc>

<http://www.manual-lib.com>

<http://www.404manual.com>

<http://www.luxmanual.com>

<http://aubethermostatmanual.com>

Golf course search by state

<http://golfingnear.com>

Email search by domain

<http://emailbydomain.com>

Auto manuals search

<http://auto.somanuals.com>

TV manuals search

<http://tv.somanuals.com>