



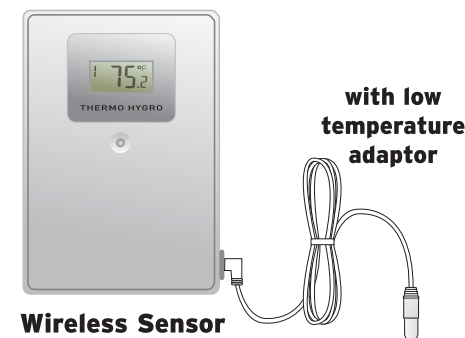
ACURITE®

## Deluxe Wireless Weather Station & Atomic Clock

MODEL # 00592W



Main Unit



Wireless Sensor

with low  
temperature  
adaptor

Thank You! We appreciate you for purchasing the new generation radio-controlled wireless weather station and atomic clock. This instrument is designed and engineered with state-of-the-art technology and components. It will provide these accurate and reliable measurements: date, time, and indoor/outdoor temperatures and humidity levels.

### 1 CHECK PACKAGE CONTENTS

- (1) Main Unit - 9.25" x 6" x 1"\*
- (1) Wireless Sensor - dimensions: 2.5" x 3.5" x 1"\*
- (2) 1" (2.5cm) screws with plastic anchors
- (1) Instruction manual

\* dimensions approximate

### 2 READ

Please read this entire manual carefully before you set up the instrument and begin to use it. In this way you can become familiar with the features of the weather station & clock to get the most benefit from it.

### 3 INSTALL BATTERIES

**Main Unit:** Always install batteries into the main unit first. On the back of the unit, remove the battery compartment cover. Insert 2 "AA" alkaline (or lithium - See NOTES below) batteries. Replace the cover.

**Wireless Sensor:** After batteries have been put into the main unit, remove the back cover of the wireless sensor. Insert 2 "AA" alkaline (or lithium) batteries. Press the "TX" button and replace the back cover of the sensor. Put the sensor aside for now, and continue to learn about the main unit. Later, in part 5 of this manual you'll learn more about the wireless sensor.

**NOTE:** When replacing the batteries for the wireless sensor, remove the batteries from the sensor and clear the sensor's channel on the main unit by pressing and holding the CHANNEL button when the corresponding channel is displayed. Reinstall the batteries into the wireless sensor and press and release the TX button to synchronize the units.

#### Operating Range of Batteries

LITHIUM BATTERIES	-22°F (-30°C)	(70°C)	158°F
ALKALINE BATTERIES	-4°F (-20°C)	(70°C)	158°F

Severe cold (below -4° F/-20° C) can cause alkaline batteries to freeze and function improperly. Use lithium batteries in extremely low temperature conditions to ensure continued operation.



#### Low Battery Indicator:

When the battery level is low for the main unit or the wireless sensor, the low battery level icons will illuminate.

### 4 CHOOSE WHERE TO PLACE THE MAIN UNIT and WIRELESS SENSOR

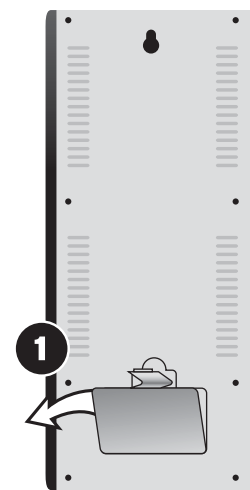
**Main Unit:** Choose wall mount or table-top placement.

- Choose a location for each unit that is at least 10 feet away from other electronic devices that may interfere with the wireless signal.
- Wall mounting: Use the mounting slot on the back of the unit to hang it from one of the supplied screws.
- Table-top placement: Attach the removable table stand by inserting the two prongs into the slots at the bottom of the main unit.

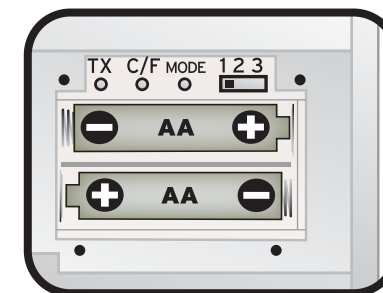
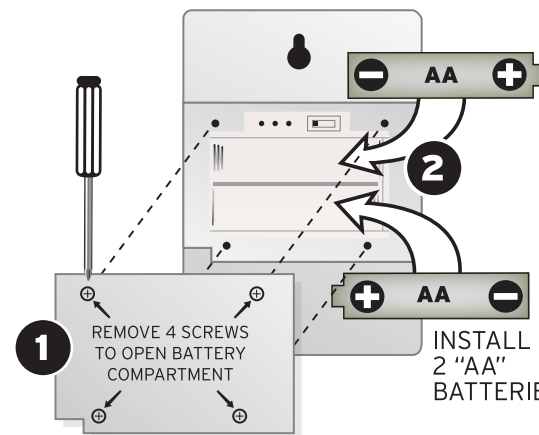
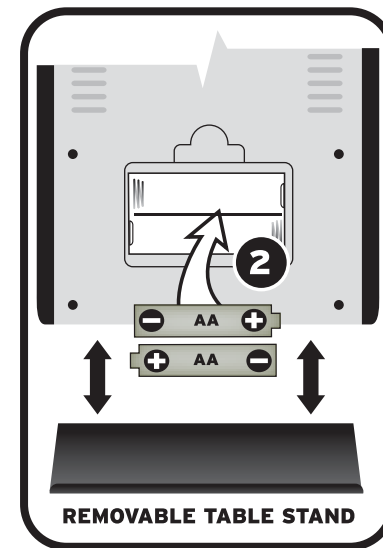
**Wireless Sensor:** When placing the sensor, consider these things:

- Although the sensor is designed for outdoor use, placement in a protected area will prolong its life.
- Mounting: Use the mounting slot on the back of the unit to hang it from one of the supplied screws.
- The sensor must be within 100 feet (30 meters) of the main unit.
- The sensor is resistant to weather and to water. It is NOT WATERPROOF.
- Prolonged exposure to cold weather may cause damage to the LCD panel.
- Wireless sensor can be placed outdoors to observe outdoor temperatures and humidity.

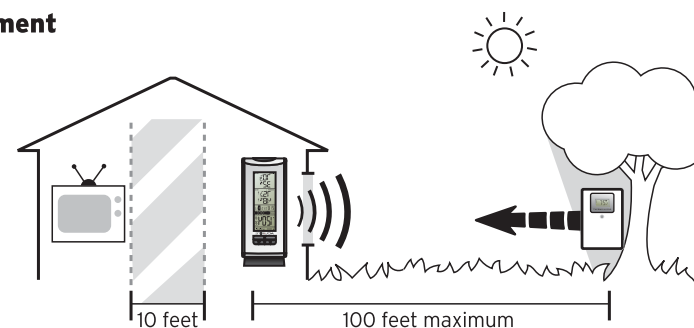
#### Main Unit BACK



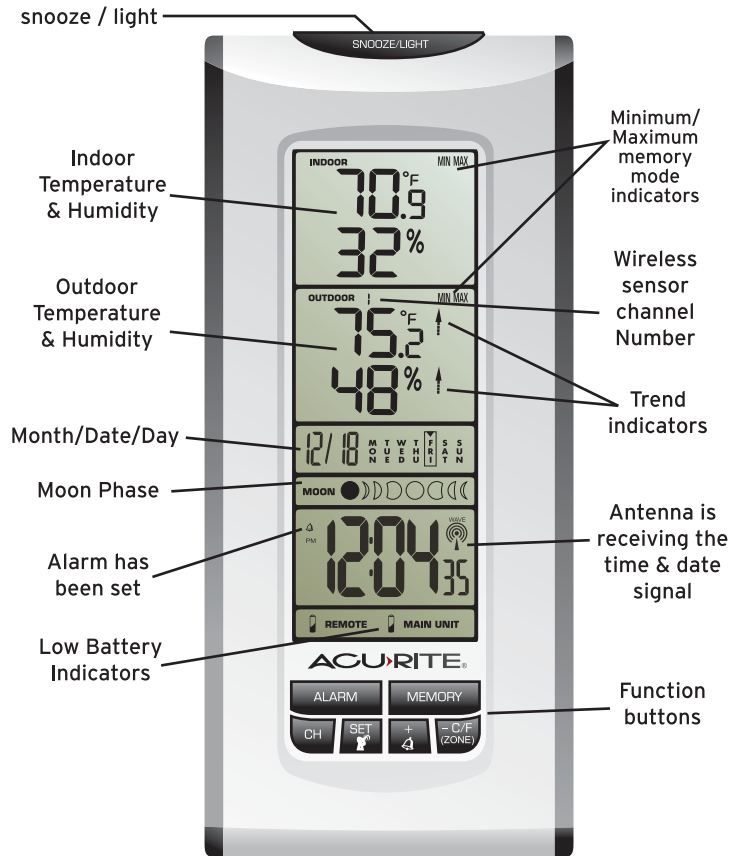
Remove Battery Compartment Cover



#### Placement



## 5 PREVIEW THE DISPLAYS

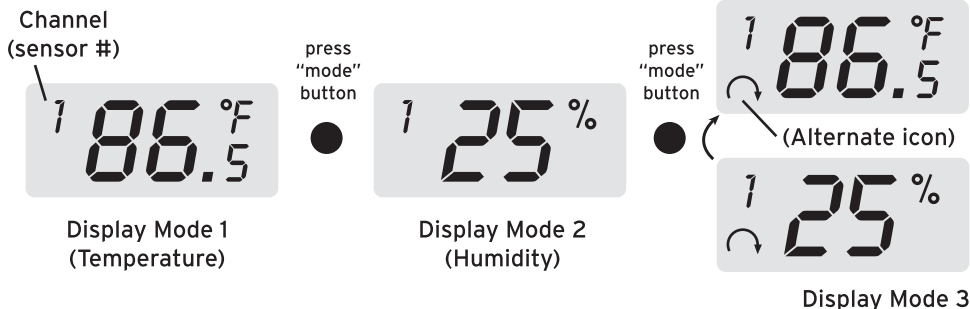


### Wireless Sensor Display

Press the "MODE" button inside the back of the wireless sensor to display temperature and/or humidity in one of three ways:

- 1) Temperature continuously,
- 2) Humidity continuously, or
- 3) Temperature for 5 seconds, then humidity for 5 seconds

**NOTE:** The sensor's display setting does not affect the main unit's display.



## 6 UNDERSTAND WHAT THE BUTTONS DO

	MAIN UNIT		
	BUTTON NAME	PRESS & RELEASE	PRESS & HOLD FOR 3 SECONDS
MAIN UNIT	CH (CHANNEL)	choose channel 1,2, or 3	clears the current channel
	MEMORY (min/max)	read maximum & minimum values for temperatures, humidity (both indoor & outdoor)	N/A
	ALARM	view alarm time for 5 seconds	set alarm time
	SET	starts radio controlled time synchronization	to set clock & calander manually
	+	turn alarm on/off OR raise a setting by one unit	fast advance setting mode
	- C/F zone	select °C or °F OR lower a setting by one unit	fast reverse in time setting mode & current time zone setting
	SNOOZE / LIGHT	silence the alarm for 5 minutes -or- activate backlight for low-light viewing	N/A
WIRELESS SENSOR	BUTTON NAME	PRESS & RELEASE	
	TX	sends wireless signal to main unit	<p>3 buttons &amp; slide switch Inside BACK of remote sensor case</p>
	C/F	select °C or °F display mode for wireless sensor	
	Mode	choose display mode for wireless sensor	
CH (1,2or 3)	choose channel 1, 2, or 3		



## 8 MULTIPLE WIRELESS SENSORS

The main unit supports up to three wireless sensors. Each additional wireless sensor must be designated a different channel number. Assigning different channel numbers differentiate each sensors temperature and hygrometer readings for the main units' display.

**Additional wireless sensors are sold separately. Call 1-800-556-2548 to order.**  
**WIRELESS SENSOR MODEL # 01022**

- 1) Open each sensor by seperating the front and back case.
- 2) Install batteries, see section 3.
- 3) Use the interior slide switch to select a channel - 1, 2, or 3.
- 4) Choose Celsius or Fahrenheit with the C/F button, for the sensor display.
- 5) With the "MODE" button choose what you want the sensor display to show:  
Temperature only,  
Humidity only, or  
Temperature and humidity, alternating.
- 6) Press the "TX" button to send a signal to the base station.
- 7) Snap the two halves of the case together firmly
- 8) Mount the sensor. See section 4 for placement of the wireless sensor unit.

## 9 PRODUCT SPECIFICATIONS

MODEL#00592W

### MEASUREMENT RANGE:

Indoor main unit	:	0° C to + 50° C (+32° F to +122° F)
Outdoor/Indoor humidity	:	20% - 99% RH
Wireless sensor	:	-20° C to +70° C (-4° F to +158° F)
Channel	:	maximum of three wireless sensors
Transmission	:	up to 30M (100 ft.) open area, RF 33MHz
Resolution	:	0.1° for temperature, 1% for humidity
Clock	:	WWVB radio-controlled, quartz back-up
Batteries	:	AA x 2 alkaline for main unit; AA x 2 alkaline for wireless sensor

ACURITE®

**Do not return product to retail store. For Technical Assistance and product return information, please call Customer Care:**

**877-221-1252**

**HOURS: Monday through Friday from 8:00 a.m. to 4:45 pm CST.**

NOTE: THE MANUFACTURER IS NOT RESPONSIBLE FOR ANY RADIO OR TV INTERFERENCE CAUSED BY UNAUTHORIZED MODIFICATIONS TO THIS EQUIPMENT. SUCH MODIFICATIONS COULD VOID THE USER AUTHORITY TO OPERATE THE EQUIPMENT



NOTE: This equipment has been tested and found to comply with the limits for a Class B digital device, pursuant to Part 15 of the FCC Rules. These limits are designed to provide reasonable protection against harmful interference in a residential installation. This equipment generates, uses and can radiate radio frequency energy and, if not installed and used in accordance with the instructions, may cause harmful interference to radio communications. However, there is no guarantee that interference will not occur in a particular installation.

If this equipment does cause harmful interference to radio or television reception, which can be determined by turning the equipment off and on, the user is encouraged to try to correct the interference by one or more of the following measures:

- Reorient or relocate the receiving antenna.
- Increase the separation between the equipment and receiver.
- Connect the equipment into an outlet on a circuit different from that to which the receiver is connected.
- Consult the dealer or an experienced radio/TV technician for help.



PLEASE DISPOSE OF OLD OR DEFECTIVE BATTERIES IN AN ENVIRONMENTALLY SAFE WAY IN ACCORDANCE WITH YOUR LOCAL REGULATIONS



If at any time in the future you need to dispose of this product please note that: Waste electrical products should not be disposed together with household waste. Please recycle where facilities exist. Check with your local Authority or retailer for recycling advice

### LIMITED WARRANTY – INTERNATIONAL

Consumer may have more remedies at law than follows. Chaney Instrument Company warrants to the owner, this product to be free from defect in material and workmanship for one year from date of purchase. CHANEY INSTRUMENT SHALL NOT BE LIABLE FOR ANY INCIDENTAL, INDIRECT OR CONSEQUENTIAL DAMAGES, WHETHER ARISING IN CONTRACT OR TORT. Chaney Instrument's obligation (at its option) is limited to repair or replace this product. For in-warranty repair, send product, accompanied by Guarantee, bearing Dealer's name and date of purchase, with \$5.00 to cover handling and postage, to:

www.chaneyinstrument.com  
Tel: 877-221-1252  
Made in China

Chaney Instrument Company  
965 Wells Street  
Lake Geneva, Wisconsin 53147

## Free Manuals Download Website

<http://myh66.com>

<http://usermanuals.us>

<http://www.somanuals.com>

<http://www.4manuals.cc>

<http://www.manual-lib.com>

<http://www.404manual.com>

<http://www.luxmanual.com>

<http://aubethermostatmanual.com>

Golf course search by state

<http://golfingnear.com>

Email search by domain

<http://emailbydomain.com>

Auto manuals search

<http://auto.somanuals.com>

TV manuals search

<http://tv.somanuals.com>