



3COM 3Com[®] VCX[™] V7111

VoIP Gateway Installation Guide

System Release 4.8



<http://www.3com.com>

Part Number 900-0391-01 Rev AB
Published December 2006

3Com Corporation, 350 Campus Drive, Marlborough MA 01752-3064

Copyright © 2003 - 2006, 3Com Corporation. All rights reserved.

No part of this documentation may be reproduced in any form or by any means or used to make any derivative work (such as translation, transformation, or adaptation) without written permission from 3Com Corporation.

3Com Corporation reserves the right to revise this documentation and to make changes in content from time to time without obligation on the part of 3Com Corporation to provide notification of such revision or change.

3Com Corporation provides this documentation without warranty, term, or condition of any kind, either implied or expressed, including, but not limited to, the implied warranties, terms, or conditions of merchantability, satisfactory quality, and fitness for a particular purpose. 3Com may make improvements or changes in the product(s) and/or the program(s) described in this documentation at any time.

If there is any software on removable media described in this documentation, it is furnished under a license agreement included with the product as a separate document, in the hardcopy documentation, or on the removable media in a directory file named LICENSE.TXT or !LICENSE.TXT. If you are unable to locate a copy, please contact 3Com and a copy will be provided to you.

UNITED STATES GOVERNMENT LEGEND

If you are a United States government agency, then this documentation and the software described herein are provided to you subject to the following:

All technical data and computer software are commercial in nature and developed solely at private expense. Software is delivered as "Commercial Computer Software" as defined in DFARS 252.227-7014 (June 1995) or as a "commercial item" as defined in FAR 2.101(a) and as such is provided with only such rights as are provided in 3Com's standard commercial license for the Software. Technical data is provided with limited rights only as provided in DFAR 252.227-7015 (Nov 1995) or FAR 52.227-14 (June 1987), whichever is applicable. You agree not to remove or deface any portion of any legend provided on any licensed program or documentation contained in, or delivered to you in conjunction with, this guide.

Unless otherwise indicated, 3Com registered trademarks are registered in the United States and may or may not be registered in other countries.

3Com, the 3Com logo, NBX, and SuperStack are registered trademarks of 3Com Corporation. NBX NetSet, pcXset, and VCX are trademarks of 3Com Corporation.

Adobe is a trademark and Adobe Acrobat is a registered trademark of Adobe Systems Incorporated. Microsoft, Windows, Windows 2000, Windows NT, and Microsoft Word are registered trademarks of Microsoft Corporation.

All other company and product names may be trademarks of the respective companies with which they are associated

CONTENTS

ABOUT THIS GUIDE 7

- How to Use This Guide 8
- Conventions 9
- Documentation Comments 9
- Notices 9
 - WEEE EU Directive 9
 - Abbreviations and Terminology 10

CHAPTER 1: QUICK START 11

CHAPTER 2: INSTALLING THE V7111 13

- Installing the V7111 13
 - Unpacking 13
 - Package Contents 14
 - 19-inch Rack Installation Package 14
 - Mounting the V7111 14
 - Cabling the V7111 16
- Installing the V7111 24-PORT 18
 - Unpacking 19
 - Package Contents 19
 - Mounting the V7111 24-PORT 19
 - Cabling the V7111 24-PORT 21

CHAPTER 3: CONFIGURING THE V7111 25

- Assigning the V7111 IP Address 25
 - Assigning an IP Address Using HTTP 26
 - Assigning an IP Address Using BootP 27
 - Assigning an IP Address Using the Voice Menu Guidance 28
 - Assigning an IP Address Using the CLI 29
- Restoring Networking Parameters to Their Initial State 30
- Accessing the Embedded Web Server 31

- Basic Control Protocol Parameters 32
 - Configuring Basic MGCP Parameters 32
 - Configuring Basic H.323 Parameters 34
 - Configuring Basic SIP Parameters 36
 - Example of Connecting Two xxx Devices 38
-

CHAPTER 4: CHANGING THE V7111 USERNAME AND PASSWORD 39

CHAPTER 5: RESTORING AND BACKING UP THE V7111 CONFIGURATION 41

CHAPTER 6: MONITORING THE V7111 43

- Monitoring the V7111 Front Panel LEDs 43
 - Monitoring the V7111 Channels 44
-

CHAPTER 7: UPGRADING THE V7111 47

- Software Upgrade Wizard 47
 - Updating the Auxiliary Files 53
-

CHAPTER 8: REGULATORY INFORMATION 57

- V7111 FXS Regulatory Information 57
 - Safety Notice 59
 - Telecommunication Safety 59
 - FCC Statement 59
- V7111 FXO Regulatory Information 60
 - Safety Notice 61
 - Industry Canada Notice 61
 - Network Compatibility 62
 - Telecommunication Safety 62
 - MP-1xx FXO Notice 62
 - FCC Statement 62
- V7111 FXS +FXO Regulatory Information 64
 - Safety Notice 65
 - Telecommunications Safety 66
 - FCC Statement 66
- V7111 24-PORT 67
 - Safety Notice 68
 - Telecommunication Safety 69

FCC Statement 69

OBTAINING SUPPORT FOR YOUR 3COM PRODUCT 71

Customer Support 71

ABOUT THIS GUIDE

This guide describes the installation of the V7111 VoIP media gateways. The model numbers that this manual supports are:

- VCX V7111 VoIP Gateway 2 FXS (3CRVG71115-07)
- VCX V7111 VoIP Gateway 4 FXS (3CRVG71110-07)
- VCX V7111 VoIP Gateway 8 FXS (3CRVG71111-07)
- VCX V7111 VoIP Gateway 24 FXS (3CRVG71112-07)
- VCX V7111 VoIP Gateway 4 FXO (3CRVG71113-07)
- VCX V7111 VoIP Gateway 8 FXO (3CRVG71114-07)
- VCX V7111 VoIP Gateway 2 FXS, 2FXO (3CRVG71116-07)
- VCX V7111 VoIP Gateway 4 FXS, 4 FXO (3CRVG71117-07)

Information contained in this document is believed to be accurate and reliable at the time of printing. However, because of on-going product improvements and revisions, 3Com cannot guarantee the accuracy of printed material after the Date Published nor can it accept responsibility for errors or omissions. Updates to this document and other documents can be viewed by registered Technical Support customers at www.3Com.com under Support / Product Documentation.



*When viewing this manual on CD, Web site or on any other electronic copy, all cross-references are hyperlinked. Click on the page or section titles (shown in blue) to reach the individual cross-referenced item directly. To return back to the point from where you accessed the cross-reference, press the **ALT** and **◀** keys.*

How to Use This Guide




This book covers these topics:

- [Chapter 1: Quick Start](#)
- [Chapter 2: Installing the V7111](#)
- [Chapter 3: Configuring the V7111](#)
- [Chapter 4: Changing the V7111 Username and Password](#)
- [Chapter 5: Restoring and Backing Up the V7111 Configuration](#)
- [Chapter 6: Monitoring the V7111](#)
- [Chapter 7: Upgrading the V7111](#)
- [Chapter 8: Regulatory Information](#)

Conventions

[Table 1](#) lists conventions that are used throughout this guide.

Table 1 Notice Icons

Icon	Notice Type	Description
	Information note	Information that describes important features or instructions.
	Caution	Information that alerts you to potential loss of data or potential damage to an application, device, system, or network.
	Warning	Information that alerts you to potential personal injury or death.

Documentation Comments

Your suggestions are important to us because we want to make our documentation more useful to you.

Please send e-mail comments about this guide or any of the V7111 documentation and Help systems to:

`VOICE_TECHCOMM_COMMENTS@3com.com`

Please include the following information with your comments:

- Document title
- Document part number (usually found on the front page)
- Page number
- Your name and organization (optional)

See the Appendix [Obtaining Support for Your Product](#) for how to register your product and get support from 3Com.

Notices

WEEE EU Directive

Pursuant to the WEEE EU Directive, electronic and electrical waste must not be disposed of with unsorted waste. Please contact your local recycling authority for disposal of this product.

Abbreviations and Terminology

Each abbreviation, unless widely used, is spelled out in full when first used. Only industry-standard terms are used throughout this manual. Hexadecimal notation is indicated by 0x preceding the number.



Where "network" appears in this manual, it means LAN, WAN, etc. accessed via the gateway's Ethernet interface.

FXO (**F**oreign **E**xchange **O**ffice) is the interface replacing the analog telephone and connects to a Public Switched Telephone Network (PSTN) line from the Central Office (CO) or to a Private Branch Exchange (PBX). The FXO is designed to **receive** line voltage and ringing current, supplied from the CO or the PBX (just like an analog telephone). An FXO VoIP gateway interfaces between the CO/PBX line and the Internet.

FXS (**F**oreign **E**xchange **S**tation) is the interface replacing the Exchange (i.e., the CO or the PBX) and connects to analog telephones, dial-up modems, and fax machines. The FXS is designed to **supply** line voltage and ringing current to these telephone devices. An FXS VoIP gateway interfaces between the analog telephone devices and the Internet.



WARNING:

Ensure that you connect FXS ports to analog telephone or to PBX-trunk lines only and FXO ports to Central Office (CO)/PBX lines only.

The V7111 is supplied as a sealed unit and must only be installed or serviced by qualified service personnel.

CHAPTER 1: QUICK START

This guide provides you with information on how to install the V7111 for the first time. Prior knowledge of IP networks is preferred.

Refer to the configuration procedures, outlined in [Figure 1](#), for information on how to install, initialize, configure the device and make calls. For detailed information on how to *fully* configure the gateway, refer to the VCX V7111 VoIP Gateway User Manual.

Figure 1 Required Steps to Install the V7111

Unpack the V7111

Mount the V7111

Cable the V7111

Assign the V7111 IP Address

Assign the V7111 IP Address

Configure the Parameters

CHAPTER 2: INSTALLING THE V7111

This section provides information on the installation procedure for the V7111 (see [Installing the V7111](#)) and the V7111 24-PORT. For information on configuring the gateway, see [Chapter 3: Configuring the V7111](#).



WARNING:

The V7111 is supplied as a sealed unit and must only be installed and serviced by qualified service personnel.

Units providing power sockets with three pins must be connected by service personnel to a socket-outlet with a protective earthing connection.

Installing the V7111

To install the V7111, follow these 4 steps:

- 1 Unpack the V7111 (see [Unpacking](#)).
- 2 Check the package contents (see [Package Contents](#)).
- 3 Mount the V7111 (see [Mounting the V7111](#)).
- 4 Cable the V7111 (see [Cabling the V7111](#)).

After connecting the V7111 to the power source, the Ready and Power LEDs on the front panel turn to green (after a self-testing period of about 2 minutes). Any malfunction in the startup procedure changes the Fail LED to red and the Ready LED is turned off (see [Table 10](#) for details on the V7111 LEDs).

When you have completed the above relevant sections you are then ready to start configuring the gateway (see [Chapter 3: Configuring the V7111](#)).

Unpacking

To unpack the V7111, follow these 6 steps:

- 1 Open the carton and remove the packing materials.
- 2 Remove the V7111 gateway from the carton.
- 3 Check that there is no equipment damage.
- 4 Check, retain and process any documents.

- 5 Notify 3Com or your local supplier of any damage or discrepancies.
- 6 Retain any diskettes or CDs.

Package Contents

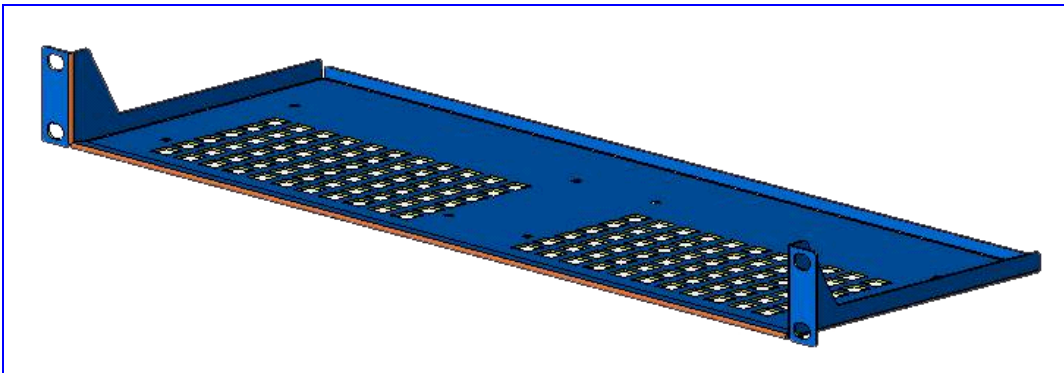
Ensure that in addition to the V7111, the package contains:

- AC power cable.
- Small plastic bag containing four anti-slide bumpers for desktop installation.

19-inch Rack Installation Package

Additional option is available for installing the V7111 in a 19-inch rack. The 19-inch rack installation package contains a single shelf (shown in [Figure 2](#)) and eight shelf-to-device screws.

Figure 2 19-inch Rack Shelf



Mounting the V7111

The V7111 can be mounted on a desktop (see [Mounting the V7111 on a Desktop](#)), on a wall (see [Mounting the V7111 on a Wall](#)) or installed in a standard 19-inch rack (see [Installing the V7111 in a 19-inch Rack](#)).

[Figure 3](#) describes the V7111 base.

Figure 3 View of the V7111 Base

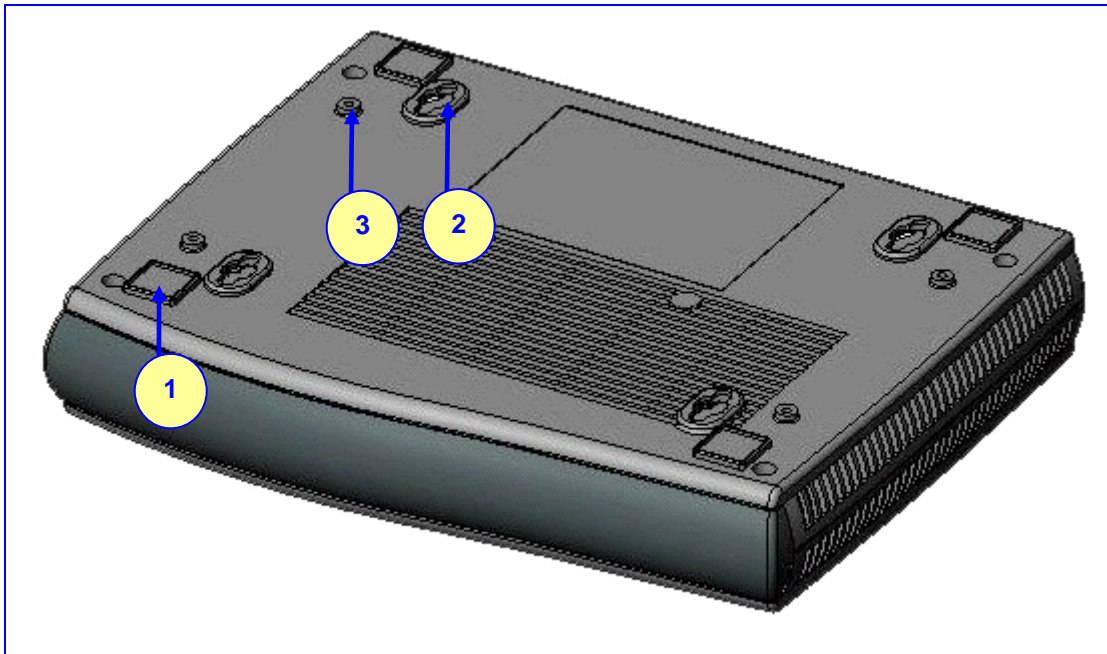


Table 2 View of the V7111 Base

Item #	Functionality
1	Square slot used to attach anti-slide bumpers (for desktop mounting)
2	Oval notch used to attach the V7111 to a wall
3	Screw opening used to attach the V7111 to a 19-inch shelf rack

Mounting the V7111 on a Desktop

Attach the four (supplied) anti-slide bumpers to the base of the V7111 (see item #1 in [Figure 3](#)) and place it on the desktop in the position you require.

Mounting the V7111 on a Wall

To mount the V7111 on a wall, follow these 4 steps:

- 1 Drill four holes according to the following dimensions:
 - Side-to-side distance 140 mm.
 - Front-to-back distance 101.4 mm.
- 2 Insert a wall anchor of the appropriate size into each hole.
- 3 Fasten a DIN 96 3.5X20 wood screw (not supplied) into each of the wall anchors.
- 4 Position the four oval notches located on the base of the V7111 (see item #2 in [Figure 3](#)) over the four screws and hang the V7111 on them.

Installing the V7111 in a 19-inch Rack

The V7111 is installed in a standard 19-inch rack by placing it on a shelf preinstalled in the rack. The 19-inch rack shelf is **not** supplied in the standard package kit, but can be ordered separately. For ordering and pricing, please contact your network distributor.

Figure 4 V7111 Rack Mount

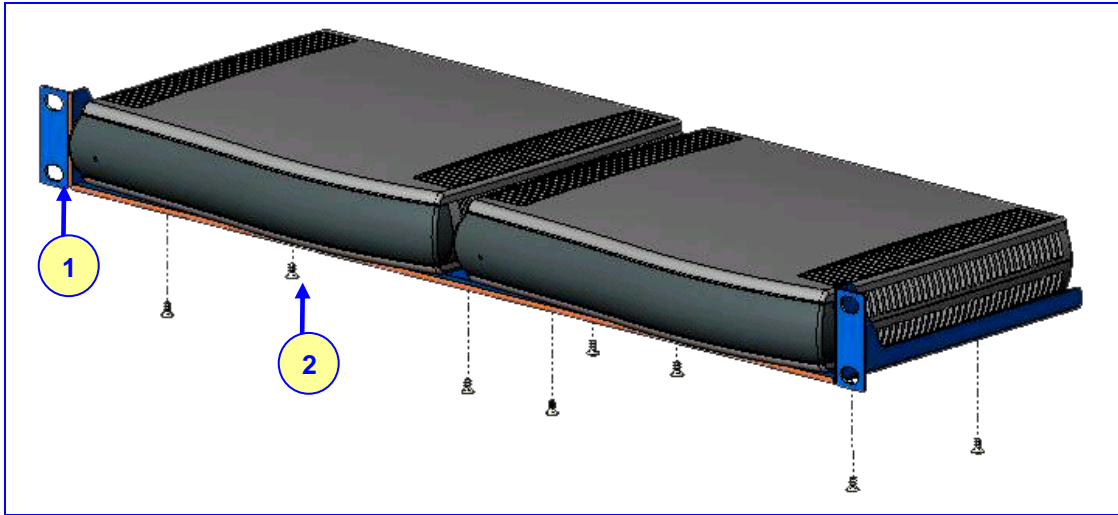


Table 3 V7111 Rack Mount

Item #	Functionality
1	Standard rack holes used to attach the shelf to the rack
2	Eight shelf-to-device screws

To install the V7111 in a 19-inch rack, follow these 3 steps:

- 1 Use the shelf-to-device screws found in the package to attach one or two V7111 devices to the shelf.
- 2 Position the shelf in the rack and line up its side holes with the rack frame holes.
- 3 Use four standard rack screws (not supplied) to attach the shelf to the rack.

Cabling the V7111

[Figure 5](#) illustrates the rear layout of the V7111. [Table 4](#) lists and describes the rear panel connectors and button on the V7111.

Cable your V7111 according to each section of [Table 5](#)

Figure 5 V7111 Rear Panel Connectors

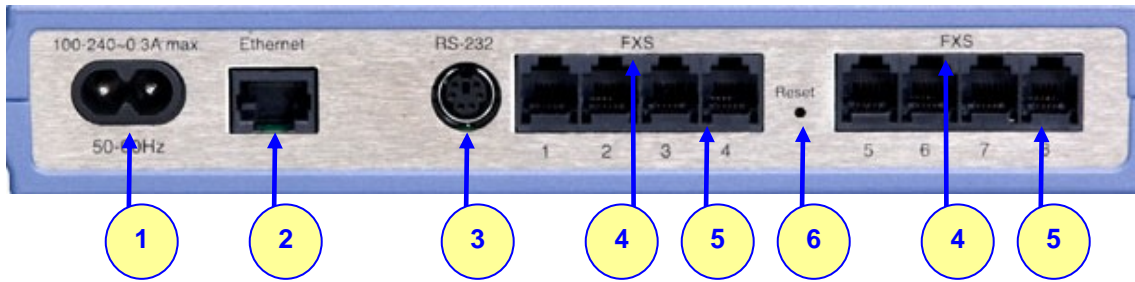


Table 4 V7111 Rear Panel Component Descriptions

Item #	Label	Component Description
1	100-240~0.3A max.	AC power supply socket
2	Ethernet	10/100 Base-TX Uplink port
3	RS-232	RS-232 status port (requires a DB-9 to PS/2 adaptor)
4	FXS or FXO	A label that distinguishes between FXS & FXO devices
5	--	2, 4 or 8 FXS / FXO ports
6	Reset	Reset button

Table 5 V7111 Cables and Cabling Procedure

Cable	Cabling Procedure
RJ-45 Ethernet cable	Connect the Ethernet connection on the V7111 directly to the network using a standard RJ-45 Ethernet cable. For connector pinouts, see Figure 6 . Note that when assigning an IP address to the V7111 using HTTP (under Step 1 in Assigning an IP Address Using HTTP), you may be required to disconnect this cable and re-cable it differently.
RJ-11 two-wire telephone cords	<p>Connect the RJ-11 FXS connectors to fax machines, modems, or phones. Ensure that FXS and FXO ports are connected to the correct devices, otherwise damage can occur. The RJ-11 pinouts are described in Figure 6.</p> <p>Connect the RJ-11 FXO connectors to telephone exchange analog lines or PBX extensions.</p>
RS-232 serial cable	<p>Using a standard RS-232 straight cable (not a cross-over cable) with DB-9 connectors, connect the V7111 RS-232 port (using a DB-9 to PS/2 adaptor) to either COM1 or COM2 RS-232 communication port on your PC. The pinouts of the PS/2 connector are shown in Figure 8.</p> <p>A PS/2 to DB-9 adaptor is not included with the V7111 package. For the PS/2 to DB-9 pinouts, see Figure 9.</p>
AC Power cable	Connect the V7111 power socket to the mains.

Figure 6 RJ-45 Ethernet Connector Pinouts

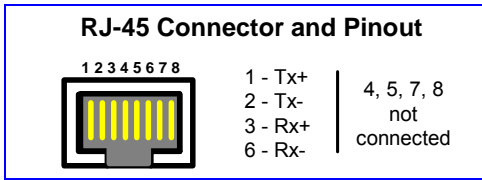


Figure 7 Phone Connector Pinouts

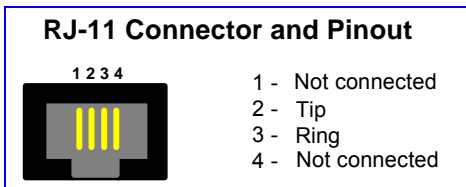


Figure 8 PS/2 Pinouts

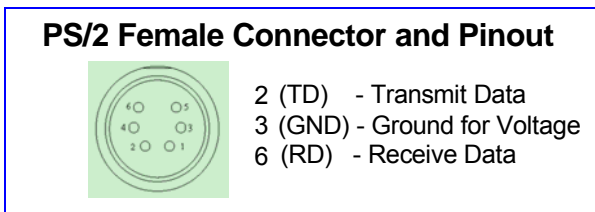
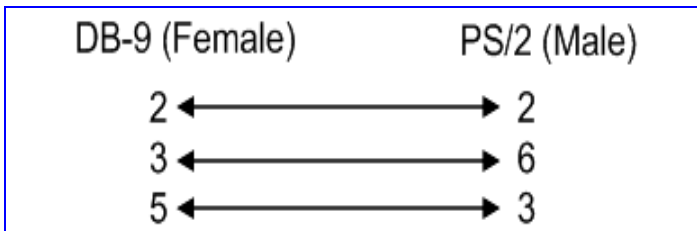


Figure 9 PS/2 to DB-9 Adaptor Pinouts



Installing the V7111 24-PORT

To install the V7111 24-PORT, follow these 4 steps:

- 1 Unpack the V7111 24-PORT (see [Unpacking](#)).
- 2 Check the package contents (see [Package Contents](#)).
- 3 Mount the V7111 24-PORT (see [Mounting the V7111 24-PORT](#)).
- 4 Cable the V7111 24-PORT (see [Cabling the V7111 24-PORT](#)).

After connecting the V7111 24-PORT to the power source, the Ready and LAN LEDs on the front panel turn to green (after a self-testing period of about 1 minute). Any malfunction changes the Ready LED to red.

When you have completed the above relevant sections you are then ready to start configuring the gateway (see [Chapter 3: Configuring the V7111](#)).

Unpacking

To unpack the V7111 24-PORT, follow these 6 steps:

- 1 Open the carton and remove packing materials.
- 2 Remove the V7111 24-PORT gateway from the carton.
- 3 Check that there is no equipment damage.
- 4 Check, retain and process any documents.
- 5 Notify 3Com or your local supplier of any damage or discrepancies.
- 6 Retain any diskettes or CDs.

Package Contents

Ensure that in addition to the V7111 24-PORT, the package contains:

- AC power cable.
- 2 short equal-length brackets and bracket-to-device screws for the 19-inch rack installation.

Mounting the V7111 24-PORT

The V7111 24-PORT can be mounted on a desktop or installed in a standard 19-inch rack. See [Cabling the V7111 24-PORT](#) for cabling the V7111 24-PORT.

Mounting the V7111 24-PORT on a Desktop

No brackets are required. Simply place the V7111 24-PORT on the desktop in the position you require.

Figure 10 Desktop or Shelf Mounting





CAUTION: Rack Mount Safety Instructions (UL)

When installing the chassis in a rack, be sure to implement the following Safety instructions recommended by Underwriters Laboratories:

- **Elevated Operating Ambient** - If installed in a closed or multi-unit rack assembly, the operating ambient temperature of the rack environment may be greater than room ambient. Therefore, consideration should be given to installing the equipment in an environment compatible with the maximum ambient temperature (T_{ma}) specified by the manufacturer.
- **Reduced Air Flow** - Installation of the equipment in a rack should be such that the amount of air flow required for safe operation on the equipment is not compromised.
- **Mechanical Loading** - Mounting of the equipment in the rack should be such that a hazardous condition is not achieved due to uneven mechanical loading.
- **Circuit Overloading** - Consideration should be given to the connection of the equipment to the supply circuit and the effect that overloading of the circuits might have on overcurrent protection and supply wiring. Appropriate consideration of equipment nameplate ratings should be used when addressing this concern.
- **Reliable Earthing** - Reliable earthing of rack-mounted equipment should be maintained. Particular attention should be given to supply connections other than direct connections to the branch circuit (e.g., use of power strips.)

Installing the V7111 24-PORT in a 19-inch Rack

The V7111 24-PORT is installed into a standard 19-inch rack by the addition of two short (equal-length) supplied brackets. The V7111 24-PORT with brackets for rack installation is shown in [Figure 11](#).

To install the V7111 24-PORT in a 19-inch rack, follow these 7 steps:

- 1 Remove the two screws on one side of the device nearest the front panel.
- 2 Insert the peg on one of the brackets into the third air vent down on the column of air vents nearest the front panel.
- 3 Swivel the bracket until the holes in the bracket line up with the two empty screw holes on the device.
- 4 Use the screws found in the devices' package to attach the bracket to the side of the device.
- 5 Repeat Steps 1 to 4 to attach the second bracket to the other side of the device.
- 6 Position the device in the rack and line up the bracket holes with the rack frame holes.

- Use four standard rack screws to attach the device to the rack. These screws are not provided with the device.

Figure 11 V7111 24-PORT with Brackets for Rack Installation



Cabling the V7111 24-PORT

[Figure 12](#) illustrates the rear panel of the V7111 24-PORT. For descriptions of the V7111 24-PORT rear panel components, see [Table 6](#).

Cable your V7111 24-PORT according to each section of [Table 7](#).

Figure 12 V7111 24-PORT (FXS) Rear Panel Connectors

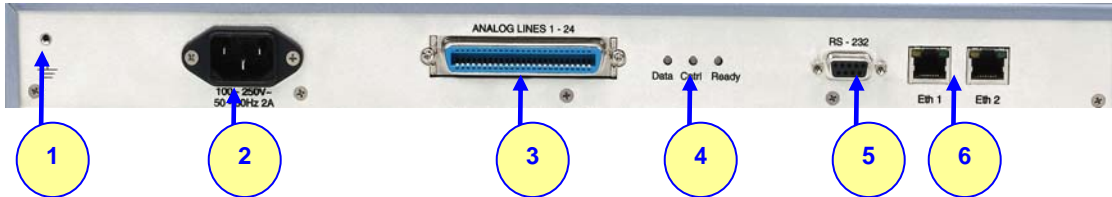


Table 6 V7111 24-PORT Rear Panel Component Descriptions

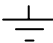
Item #	Label	Component Description
1		Protective earthing screw (mandatory for all installations).
2	100-250 V~ 50 - 60 Hz 2A	AC power supply socket.
3	ANALOG LINES 1 -24	50-pin Telco for 1 to 24 analog lines.
4	Data Cntrl Ready	LED indicators (described in Table 11).
5	RS-232	9 pin RS-232 status port.
6	Eth 1 Eth 2	Dual 10/100 Base-TX Ethernet connections.

Table 7 V7111 24-PORT Cables and Cabling Procedure

Cable	Cabling Procedure
Protective earthing strap	Connect an earthed strap to the chassis protective earthing screw and fasten it securely according to the safety standards.
RJ-45 Ethernet cable	<p>Connect the Ethernet connection on the V7111 24-PORT directly to the network using a standard RJ-45 Ethernet cable. For connector pinouts, see Figure 13.</p> <p>Note that when assigning an IP address to the V7111 24-PORT using HTTP (under Step 1 see Assigning an IP Address Using HTTP), you may be required to disconnect this cable and re-cable it differently.</p> <p>See the V7111 24-PORT Safety Notice below.</p>
50-pin Telco cable (V7111 24-PORT devices only).	<p>Wire the 50-pin Telco connectors according to the pinouts in Figure 14, and Figure 15.</p> <p>Attach each pair of wires from a 25-pair Octopus cable to its corresponding socket on the MDF Adaptor Block's rear.</p> <p>Connect the wire-pairs at the other end of the cable to a male 50-pin Telco connector.</p>
An Octopus cable is not included with the V7111 24-PORT package.	<p>Insert and fasten this connector to the female 50-pin Telco connector on the V7111 24-PORT rear panel (labeled Analog Lines 1-24).</p> <p>Connect the telephone lines from the Adaptor Block to a fax machine, modem, or telephones by inserting each RJ-11 connector on the 2-wire line cords of the POTS phones into the RJ-11 sockets on the front of an MDF Adaptor Block as shown in Figure 15.</p>
RS-232 serial cable	Using a standard RS-232 straight cable (not a cross-over cable) with DB-9 connectors, connect the V7111 24-PORT RS-232 port to either COM1 or COM2 RS-232 communication port on your PC. The required connector pinouts and gender are shown in Figure 16 .
AC Power cable	Connect the V7111 24-PORT power socket to the mains.



CAUTION: V7111 24-PORT Safety Notice

To protect against electrical shock and fire, use a 26 AWG min wire to connect analog FXS lines to the 50-pin Telco connector.

Figure 13 RJ-45 Ethernet Connector Pinouts

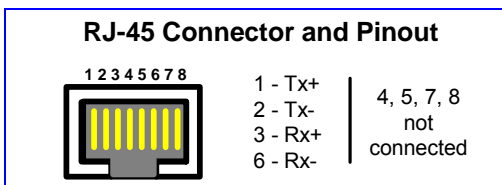


Figure 14 50-pin Telco Connector (V7111 24-PORT/FXS only)

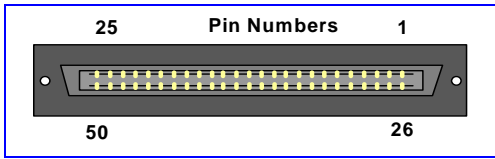


Figure 15 V7111 24-PORT in a 19-inch Rack with MDF Adaptor

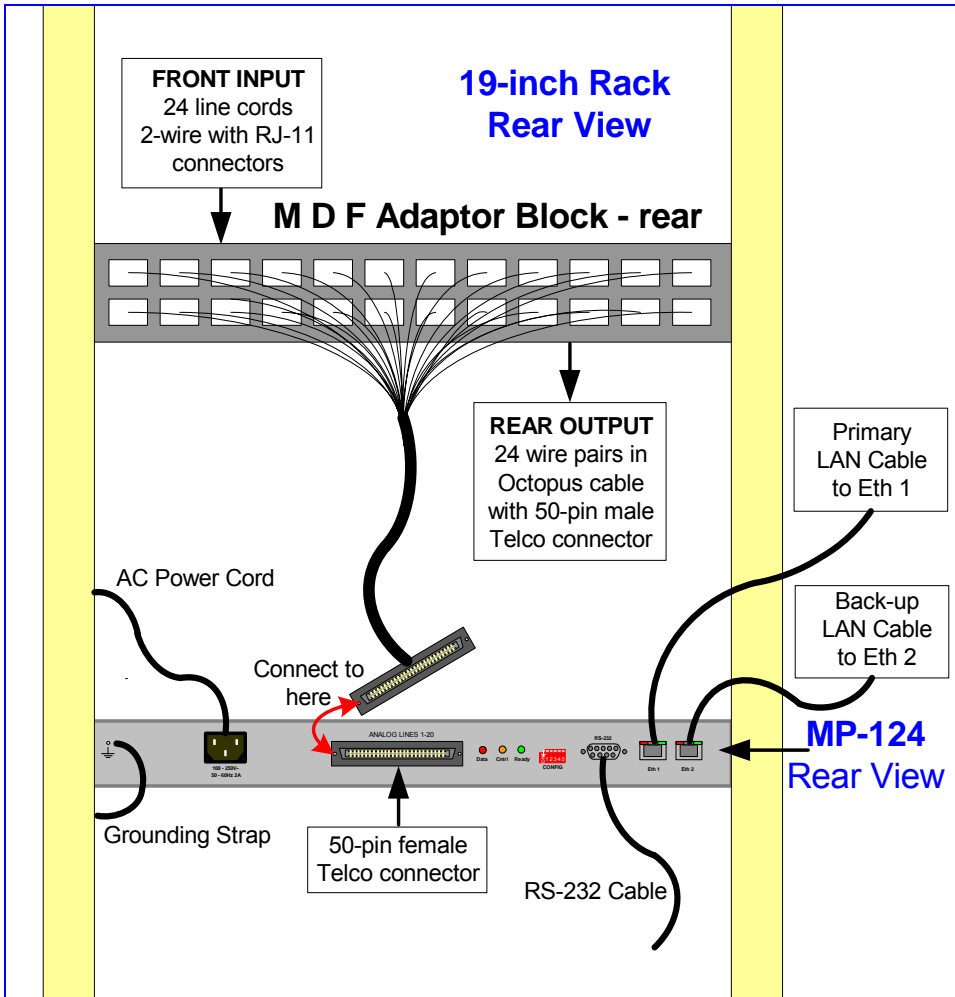
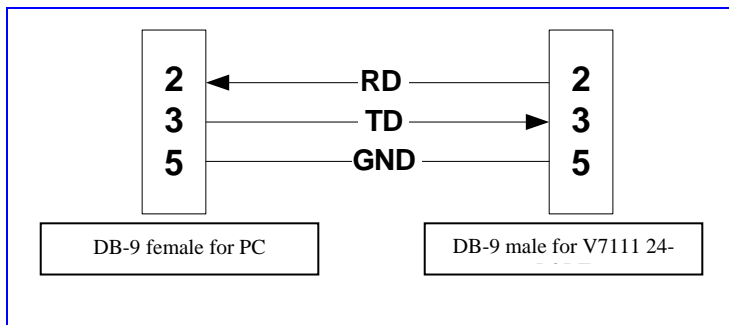


Table 8 Pin Allocation in the 50-pin Telco Connector

Phone Channel	Connector Pins	Phone Channel	Connector Pins
1	1/26	13	13/38
2	2/27	14	14/39
3	3/28	15	15/40
4	4/29	16	16/41
5	5/30	17	17/42
6	6/31	18	18/43
7	7/32	19	19/44
8	8/33	20	20/45
9	9/34	21	21/46
10	10/35	22	22/47
11	11/36	23	23/48
12	12/37	24	24/49

Figure 16 V7111 24-PORT RS-232 Cable Wiring



CHAPTER 3: CONFIGURING THE V7111

The V7111 application software already resides in the device's flash memory when it is supplied (with factory default parameters). V7111 devices also include an Embedded (integrally stored) Web Server.

[Assigning the V7111 IP Address](#) describes how to assign an IP address to the V7111. [Basic Control Protocol Parameters](#) describes how to set up the V7111 with basic parameters using a standard Web browser (such as Microsoft™ Internet Explorer).



[Assigning the V7111 IP Address](#) applies equally to MGCP, H.323 and SIP.

Assigning the V7111 IP Address

To assign an IP address to the V7111 use one of the following methods:

- HTTP using a Web browser (see [Assigning an IP Address Using HTTP](#)).
- BootP (see [Assigning an IP Address Using BootP](#)).
- Voice Menu using a standard touch-tone telephone connected to one of the FXS analog ports (see [Assigning an IP Address Using the Voice Menu Guidance](#)). This method doesn't apply to FXO gateways.
- The embedded Command Line Interface (CLI) accessed via Telnet or RS-232 (see [Assigning an IP Address Using the CLI](#)).
- DHCP (refer to the product's User's Manual).

The default networking parameters are show in [Table 9](#).

Use the 'Reset' button at any time to restore the V7111 networking parameters to their factory default values (see [Restoring Networking Parameters to their Initial State](#)).

Table 9 V7111 Default Networking Parameters

Parameter	Default Value
FXS	10.1.10.10
FXO	10.1.10.11
FXS / FXO	10.1.10.10

V7111 default subnet mask is 255.255.0.0, default gateway IP address is 0.0.0.0

Assigning an IP Address Using HTTP

To assign an IP address using HTTP, follow these 8 steps:

- 1 Disconnect the V7111 from the network and reconnect it to your PC using one of the following two methods:
 - Use a standard Ethernet cable to connect the network interface on your PC to a port on a network hub / switch. Use a second standard Ethernet cable to connect the V7111 to another port on the same network hub / switch.
 - Use an Ethernet cross-over cable (for the V7111 24-PORT) or a standard Ethernet cable (for the V7111) to directly connect the network interface on your PC to the V7111.
- 2 Change your PC's IP address and subnet mask to correspond with the V7111 factory default IP address and subnet mask, shown in [Table 9](#). For details on changing the IP address and subnet mask of your PC, refer to Windows™ Online Help (Start>Help).
- 3 Access the V7111 Embedded Web Server (see [Accessing the Embedded Web Server](#)).
- 4 In the 'Quick Setup' screen, set the V7111 'IP Address', 'Subnet Mask' and 'Default Gateway IP Address' fields under 'IP Configuration' to correspond with your network IP settings. If your network doesn't feature a default gateway, enter a dummy value in the 'Default Gateway IP Address' field.
- 5 Click the **Reset** button and click **OK** in the prompt; the V7111 applies the changes and restarts. This takes approximately 2 minutes to complete. When the V7111 has finished restarting, the Power and Ready LEDs on the front panel are lit green.



Record & retain the IP address and subnet mask you assign the V7111. Do the same when defining new username or password. If the Embedded Web Server is unavailable (for example, if you've lost your username and password), use the BootP/TFTP configuration utility to access the device, "reflash" the load and reset the password (refer to the V7111 User's Manuals for detailed information on using a BootP/TFTP server to access the device).

- 6 Disconnect your PC from the V7111 or from the hub / switch (depending on the connection method you used in [Step 1](#)).
- 7 Reconnect the V7111 and your PC (if necessary) to the network.

- 8 Restore your PC's IP address & subnet mask to what they originally were. If necessary, restart your PC and re-access the V7111 via the Embedded Web Server with its new assigned IP address.

Assigning an IP Address Using BootP



BootP procedure can also be performed using any standard compatible BootP server.

You can also use BootP to load the auxiliary files to the V7111 (refer to the product's User's Manual).

To assign an IP address using BootP, follow these 12 steps:

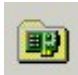
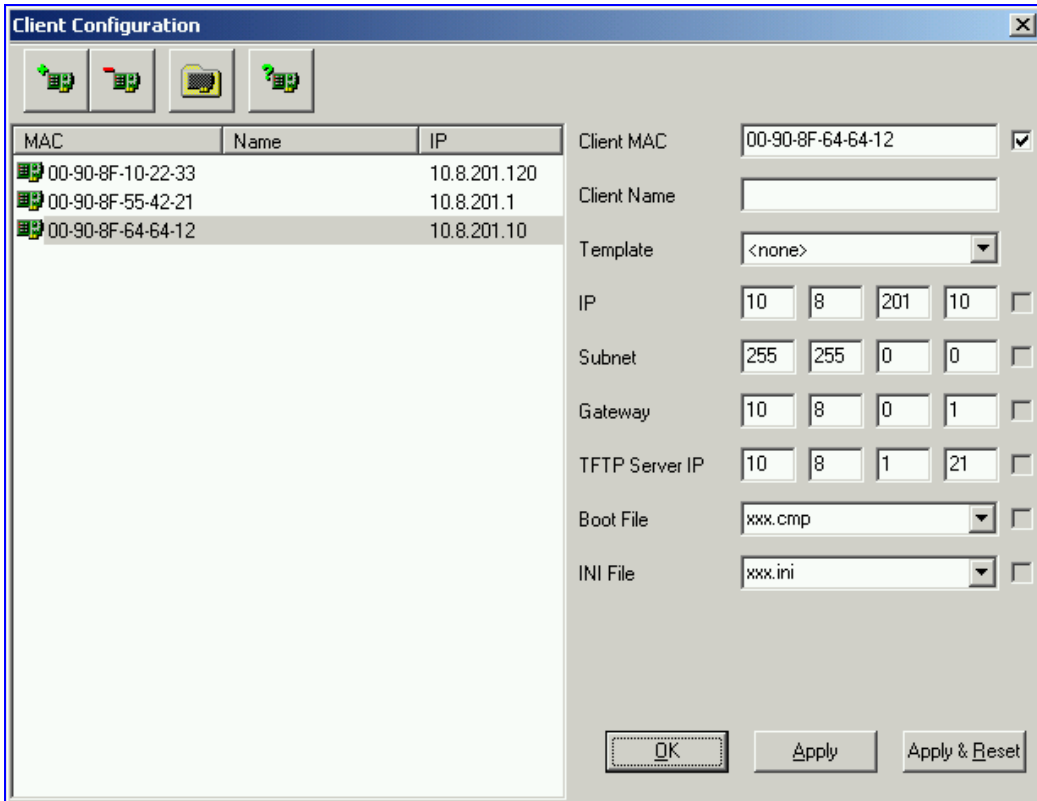
- 1 Open the BootP application (supplied with the software package).
- 2 Click on the **Edit Clients** icon;
the 'Client Configuration' screen is displayed. 
- 3 Click on the **Add New Client** icon;
a client with blank parameters is displayed ([Figure 17](#)).
- 4 In the 'Client MAC' field, enter the MAC address of the gateway. The MAC address is printed on a label located on the base of the V7111.
- 5 Verify that the box to the right of the 'Client MAC' field is checked. This enables the particular client in the BootP tool (if the client is disabled, no replies are sent to BootP requests).
- 6 In the 'Client Name' field, enter a descriptive name for this client so that it is easier to remember which gateway the record refers to. For example, this name could refer to the location of the gateway.
- 7 In the 'IP' field, enter the IP address you want to apply to the gateway. Use the normal dotted decimal format.
- 8 In the 'Subnet' field, enter the subnet mask you want to apply to the gateway. Use the normal dotted decimal format. Ensure that the subnet mask is correct. If the address is incorrect, the gateway may not function until the entry is corrected and a BootP reset is applied.
- 9 In the 'Gateway' field, enter the IP address for the default gateway. If you do not know the IP address for the default gateway, contact your network administrator.
- 10 Click **Apply** to save this entry to the list of clients.
- 11 Click **OK**; the 'Client Configuration' screen is closed.
- 12 Use the reset button (located on the V7111 rear panel) to *physically* reset the gateway causing it to use BootP; the device changes its network parameters to the values provided by the BootP.

Figure 17 Client Configuration Screen with Blank Parameters



Assigning an IP Address Using the Voice Menu Guidance

To assign an IP address using the voice menu guidance, follow these 7 steps:

- 1 Connect a telephone to one of the FXS ports. Lift the handset and dial ***12345 (three stars followed by the digits 1, 2, 3, 4, 5).
- 2 Wait for the 'configuration menu' voice prompt to be played.
- 3 To change the IP address, press 1 followed by the pound key (#).
 - The current IP address of the gateway is played. Press # to change it.
 - Dial the new IP address; use the star (*) key instead of dots ("."), e.g. 192*168*0*4 and press # to finish.
 - Review the new IP address, and press 1 to save it.
- 4 To change the subnet mask, press 2 followed by the # key.
 - The current subnet mask of the gateway is played. Press # to change it.
 - Dial the new subnet mask; e.g. 255*255*0*0 and press # to finish.
 - Review the new subnet mask, and press 1 to save it.

- 5 To change the default gateway IP address, press 3 followed by the # key.
 - The current default gateway address of the gateway is played. Press # to change it.
 - Dial the new default gateway address; e.g. 192*168*0*1 and press # to finish.
 - Review the new default gateway address, and press 1 to save it.
- 6 Hang up the handset. Access the gateway's Embedded Web Server with the new IP address you assigned (see [Accessing the Embedded Web Server](#)).
- 7 Reset the gateway. Click the **Reset Device** button on the main menu bar; the Reset screen is displayed. Click the button **Reset** (with the Burn option selected).

Assigning an IP Address Using the CLI

First access the CLI using a standard Telnet application or using a serial communication software (e.g., HyperTerminal™) connected to the V7111 RS-232 port (see [Access the CLI](#)). Then assign the V7111 an IP address (see [Assign an IP Address](#)).

Access the CLI

To access the CLI via the Embedded Telnet Server, follow these 3 steps:

- 1 Enable the Embedded Telnet Server:
 - Access the V7111 Embedded Web Server (see [Accessing the Embedded Web Server](#)).
 - Set the parameter 'Embedded Telnet Server' (under **Advanced Configuration > Network Settings > Application Settings**) to 'Enable (Unsecured)' or 'Enable Secured (SSL)'.
 - Click the **Reset Device** button on the main menu bar; the Reset screen is displayed.
 - Click the **Reset** button in the middle of the Reset screen with the Burn option selected; the V7111 is shut down and re-activated. A message about the waiting period is displayed. The screen is refreshed.
- 2 Use a standard Telnet application to connect to the V7111 Embedded Telnet Server. Note that if the Telnet server is set to SSL mode, a special Telnet client is required on your PC to connect to the Telnet interface over a secured connection.
- 3 Login using the username ('Admin') and password ('Admin').

To access the CLI via the RS-232 port, follow these 2 steps:

- 1 Connect the RS-232 port to your PC (For the V7111, see [Table 5](#). For the V7111 24-PORT, see [Table 7](#)).

- 2 Use a serial communication software (e.g., HyperTerminal™) to connect to the V7111. Set your serial communication software to the following communications port settings:
 - Baud Rate: 115,200 bps (V7111 24-PORT), 9,600 bps (V7111)
 - Data bits: 8
 - Parity: None
 - Stop bits: 1
 - Flow control: None

The CLI prompt is available immediately.

Assign an IP Address

To assign an IP address via the CLI, follow these 4 steps:

- 1 At the prompt type 'conf' and press enter; the configuration folder is accessed.
- 2 To check the current network parameters, at the prompt, type 'GCP IP' and press enter; the current network settings are displayed.
- 3 Change the network settings by typing: 'SCP IP [ip_address] [subnet_mask] [default_gateway]' (e.g., 'SCP IP 10.13.77.7 255.255.0.0 10.13.0.1'); the new settings take effect on-the-fly. Connectivity is active at the new IP address.



This command requires you to enter all three network parameters (each separated by a space).

- 4 To save the configuration, at the prompt, type 'SAR' and press enter; the V7111 restarts with the new network settings.

Restoring Networking Parameters to Their Initial State

You can use the 'Reset' button to restore the V7111 networking parameters to their factory default values (described in [Table 9](#)) and to reset the username and password.

Note that the V7111 returns to the software version burned in flash. This process also restores the V7111 parameters to their factory settings. Therefore, you must load your previously backed-up *ini* file, or the default *ini* file (received with the software kit) to set them to their correct values.

To restore the networking parameters of the V7111 to their initial state, follow these 4 steps:

- 1 Press in the 'Reset' button uninterruptedly for a duration of more than six seconds; the gateway is restored to its factory settings (username: 'Admin', password: 'Admin').
- 2 Assign the V7111 IP address (see [Assigning the V7111 IP Address](#)).

- 3 Load your previously backed-up *ini* file, or the default *ini* file (received with the software kit). To load the *ini* file via the Embedded Web Server, refer to the V7111 User's Manual.
- 4 Press again on the 'Reset' button (this time for a short period).

To restore the networking parameters of the V7111 24-PORT to their initial state, follow these 6 steps:

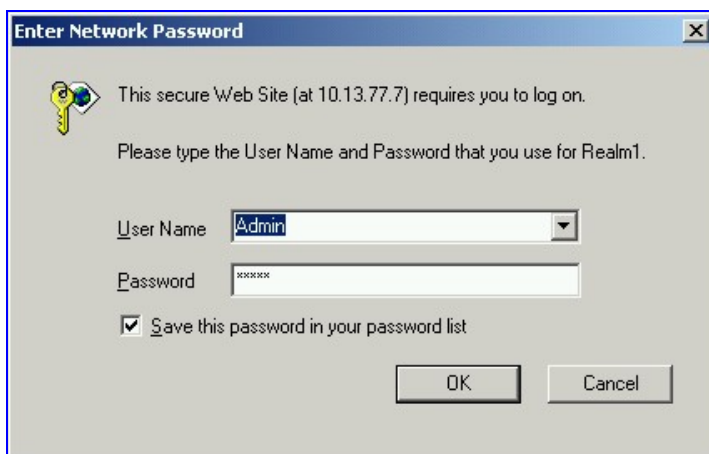
- 1 Disconnect the V7111 24-PORT from the power and network cables.
- 2 Reconnect the power cable; the gateway is powered up. After approximately 45 seconds the Ready LED turns to green and the Control LED blinks for about 3 seconds.
- 3 While the Control LED is blinking, press shortly on the reset button (located on the left side of the front panel); the gateway resets a second time and is restored with factory default parameters (username: 'Admin', password: 'Admin').
- 4 Reconnect the network cable.
- 5 Assign the V7111 24-PORT IP address (see [Assigning the V7111 IP Address](#)).
- 6 Load your previously backed-up *ini* file, or the default *ini* file (received with the software kit). To load the *ini* file via the Embedded Web Server, refer to the V7111 User's Manual.

Accessing the Embedded Web Server

To access the Embedded Web Server, follow these 4 steps:

- 1 Open a standard Web-browsing application such as Microsoft™ Internet Explorer™ (Version 6.0 and higher) or Netscape™ Navigator™ (Version 7.2 and higher).
- 2 In the URL field, specify the IP address of the V7111 (e.g., <http://10.1.10.10>); the Embedded Web Server's 'Enter Network Password' screen appears, shown in [Figure 18](#).

Figure 18 Embedded Web Server Login Screen



- 3 In the 'User Name' and 'Password' fields, enter the username (default: "Admin") and password (default: "Admin"). Note that the username and password are case-sensitive.

- 4 Click **OK**; the 'Quick Setup' screen is accessed, shown in [Figure 19](#) (MGCP), [Figure 20](#) (H.323), and [Figure 21](#) (SIP).

Basic Control Protocol Parameters

To configure the V7111 *basic* control protocol parameters use the Embedded Web Server's 'Quick Setup' screen.

- For MGCP, see [Configuring Basic MGCP Parameters](#).
- For H.323, see [Configuring Basic H.323 Parameters](#).
- For SIP, see [Configuring Basic SIP Parameters](#).

When you have completed the above relevant section you are then ready to start using the V7111. For information on how to fully configure the VoIP gateway, refer to the V7111 User's Manuals.



Once the gateway is configured correctly, back up your settings by making a copy of the VoIP gateway configuration (ini file) and store it in a directory on your PC. This saved file can be used to restore configuration settings at a future time. For information on backing up and restoring the gateway's configuration, see [Chapter 5: Restoring and Backing Up the V7111 Configuration](#).

The following configuring Sections from here up to and including [Configuring Basic SIP Parameters](#) apply individually to MGCP, H.323, or SIP.

***MGCP** configuring continues with [Configuring Basic MGCP Parameters](#).*

***H.323** configuring continues with [Configuring Basic H.323 Parameters](#).*

***SIP** configuring continues with [Configuring Basic SIP Parameters](#).*

Configuring Basic MGCP Parameters

After accessing the Embedded Web Server (see [Accessing the Embedded Web Server](#)) the MGCP 'Quick Setup' screen is displayed, shown in [Figure 19](#).

Figure 19 V7111 MGCP Quick Setup Screen

Quick Setup	
IP Configuration	
IP Address	10.13.77.7
Subnet Mask	255.255.0.0
Default Gateway IP Address	10.13.0.1
DNS Primary Server IP	10.1.1.10
DNS Secondary Server IP	
Enable DHCP	Disable
Control Protocol Configuration	
Control Protocol Type	MGCP
Call Agent IP	0.0.0.0
Call Agent Port	2427
Call Agent Domain Name	
Gateway Name	AudioCodes.com
Endpoint Name	ACgw
Endpoint Numbering Offset	0

To configure basic MGCP parameters, follow these 10 steps:

- 1 If your network features a DNS server, in the fields 'DNS Primary Server IP' and 'DNS Secondary Server IP', enter the IP address of the primary and secondary DNS servers (clarify with your network administrator). Note that the DNS server option is not supported by MGCP.
- 2 If your network features a DHCP server, in the 'Enable DHCP' field, select 'Enable'; the 'IP Address', 'Subnet Musk' and 'Default Gateway IP Address' fields are disabled. When the gateway is configured to use DHCP, it attempts to contact the DHCP server to obtain the networking parameters (i.e., IP address, subnet mask, default gateway and primary/secondary DNS server).
- 3 Select 'MGCP' in the 'Control Protocol Type' field.
- 4 In the 'Call Agent IP' field, enter the Call Agent IP address if your enterprise's network doesn't feature a DNS server that automatically defines the Call Agent's IP address. If you have a DNS server, the field is optional.
- 5 In the 'Call Agent Port' field, enter the Call Agent port. The default is 2427.
- 6 In the 'Call Agent Domain Name' field, enter the Call Agent domain name. When using the DNS server option, enter the domain name of the Call Agent operating with the V7111. The DNS server automatically detects the Call Agent's IP address from the domain name.

- 7 In the 'Gateway Name' field, enter a name to the device. (For example: 'gateway1.com'). Ensure that the name you choose is the one that the Call Manager/Agent is configured with to identify your V7111.
- 8 In the 'Endpoint Name' field, enter an intuitive endpoint name. Ensure that the endpoint name you choose is the one that the Call Agent works with.
- 9 In the 'Endpoint Numbering Offset' field, you can enter a value to offset the numbers that represent the gateway's endpoints.
- 10 Click the **Reset** button and click **OK** in the prompt; the V7111 applies the changes and restarts. This takes approximately 2 minutes to complete. When the V7111 has finished restarting, the Power and Ready LEDs on the front panel are lit green.



MGCP users should continue with [Chapter 4: Changing the V7111 Username and Password](#).

Configuring Basic H.323 Parameters

After accessing the Embedded Web Server (see [Accessing the Embedded Web Server](#)) the H.323 'Quick Setup' screen is displayed, shown in [Figure 20](#).

Figure 20 V7111 H.323 Quick Setup Screen

Quick Setup	
IP Configuration	
IP Address	<input type="text" value="10.8.25.80"/>
NAT IP Address	<input type="text" value="0.0.0.0"/>
Subnet Mask	<input type="text" value="255.255.0.0"/>
Default Gateway IP Address	<input type="text" value="10.8.0.1"/>
H.323 Parameters	
Working with Gatekeeper	<input type="text" value="No"/>
Gatekeeper IP Address	<input type="text" value="0.0.0.0"/>
Enable Annex D/T.38 Fax Relay	<input type="text" value="Disable"/>
Tables	
Coders Table	<input type="button" value="-->"/>
Tel to IP Routing Table	<input type="button" value="-->"/>
Endpoint Phone Numbers	<input type="button" value="-->"/>

To configure basic H.323 parameters, follow these 7 steps:

- 1 If the V7111 is connected to a router with NAT enabled, perform the following procedure. If it isn't, leave the 'NAT IP Address' field undefined.
 - Determine the "public" IP address assigned to the router (by using, for instance, router Web management). Enter this public IP address in the 'NAT IP Address' field.
 - Enable the DMZ configuration on the residential router for the LAN port where the V7111 gateway is connected. This enables unknown packets to be routed to the DMZ port.
- 2 When working with a Gatekeeper, set 'Working with Gatekeeper' field, under 'H.323 Parameters', to 'Yes' and enter the IP address of the primary Gatekeeper in the field 'Gatekeeper IP Address'. When no Gatekeeper is used, the internal routing table is used to route the calls.
- 3 Leave parameter 'Enable Annex D/T.38 FAX Relay' at its default unless your technical requirements differ.
- 4 Select the coder (i.e., vocoder) that best suits your VoIP system requirements. The default coder is: G.723.1 30 msec. To program the entire list of coders you want the V7111 to use, refer to the V7111 User's Manual.
- 5 Map outgoing calls to IP addresses (*when Gatekeeper isn't used*) by completing these steps:
 - Click the arrow button next to the 'Tel to IP Routing Table' label; the 'Tel to IP Routing' screen opens.
Any telephone number whose destination number matches the prefix defined in the 'Destination Phone Prefix' field *and* whose source number matches the prefix defined in the adjacent 'Source Phone Prefix' field, is sent to the IP address entered in the 'IP Address' field.
 - Click the **Submit** button; the 'Tel to IP Routing' table is automatically updated.
 - Click **Quick Setup**; you're returned to the 'Quick Setup' screen.

For more information on the 'Tel to IP Routing' table refer to the V7111 H.323 User's Manual.
- 6 Allocate V7111 endpoints (analog lines) and their corresponding phone numbers to incoming IP calls by completing these steps:
 - Click the arrow button next to the 'Endpoint Phone Number' label; the 'Endpoint Phone Numbers' screen opens.
 - Enter the number of a channel, starting with 1, (or a group of channels), under the 'Channel(s)' column (for example 1-4 for the first 4 endpoints).
 - Assign each channel a phone number (for a group of channels, define the first number in an ordered sequence).
 - Click the **Submit** button; the 'Endpoint Phone Number' table is automatically updated.

- Click **Quick Setup**; you're returned to the 'Quick Setup' screen.
- 7 Click the **Reset** button and click **OK** in the prompt; the V7111 applies the changes and restarts. This takes approximately 2 minutes to complete. When the V7111 has finished restarting, the Power and Ready LEDs on the front panel are lit green.

Configuring Basic SIP Parameters

After accessing the Embedded Web Server (see [Accessing the Embedded Web Server](#)) the SIP 'Quick Setup' screen is displayed, shown in [Figure 21](#).

Figure 21 V7111 SIP Quick Setup Screen

Quick Setup	
IP Configuration	
IP Address	<input type="text" value="10.8.25.80"/>
NAT IP Address	<input type="text" value="0.0.0.0"/>
Subnet Mask	<input type="text" value="255.255.0.0"/>
Default Gateway IP Address	<input type="text" value="10.8.0.1"/>
SIP Parameters	
Gateway Name	<input type="text" value="10.8.8.10"/>
Working with Proxy	<input type="text" value="Yes"/>
Proxy IP Address	<input type="text" value="10.8.8.10"/>
Proxy Name	<input type="text"/>
Enable Registration	<input type="text" value="Enable"/>
Tables	
Coders Table	<input type="button" value="-->"/>
Tel to IP Routing Table	<input type="button" value="-->"/>
Endpoint Phone Number Table	<input type="button" value="-->"/>

To configure basic SIP parameters, follow these 9 steps:

- 1 If the V7111 is connected to a router with NAT enabled, perform the following procedure. If it isn't, leave the 'NAT IP Address' field undefined.
 - Determine the "public" IP address assigned to the router (by using, for instance, router Web management). Enter this public IP address in the 'NAT IP Address' field.
 - Enable the DMZ configuration on the residential router for the LAN port where the V7111 gateway is connected. This enables unknown packets to be routed to the DMZ port.
- 2 Under 'SIP Parameters', enter the V7111 Domain Name in the field 'Gateway Name'. If the field is not specified, the V7111 IP address is used instead (default).
- 3 When working with a Proxy server, set 'Working with Proxy' field to 'Yes' and enter the IP address of the primary Proxy server in the field 'Proxy IP Address'. When no Proxy is used, the internal routing table is used to route the calls.
- 4 Enter the Proxy Name in the field 'Proxy Name'. If Proxy name is used, it replaces the Proxy IP address in all SIP messages. This means that messages are still sent to the physical Proxy IP address but the SIP URI contains the Proxy name instead.
- 5 Configure 'Enable Registration' to 'Yes' or 'No':
'No' = the V7111 does not register to a Proxy server/Registrar (default).
'Yes' = the V7111 registers to a Proxy server/Registrar at power up and every 'Registration Time' seconds; The V7111 sends a register request for each channel or for the entire gateway (according to the 'Authentication Mode' parameter). For detailed information on the parameters 'Registration Time' and 'Authentication Mode', refer to the V7111 SIP User's Manual.
- 6 Select the coder (i.e., vocoder) that best suits your VoIP system requirements. The default coder is: G.723.1 30 msec. To program the entire list of coders you want the V7111 to use, refer to the V7111 User's Manual.
- 7 Map outgoing calls to IP addresses (*when Proxy isn't used*) by completing these steps:
 - Click the arrow button next to the 'Tel to IP Routing Table' label; the 'Tel to IP Routing' screen opens.
Any telephone number whose destination number matches the prefix defined in the 'Destination Phone Prefix' field *and* whose source number matches the prefix defined in the adjacent 'Source Phone Prefix' field, is sent to the IP address entered in the 'IP Address' field.
 - Click the **Submit** button; the 'Tel to IP Routing' table is automatically updated.
 - Click **Quick Setup**; you're returned to the 'Quick Setup' screen.

For more information on the 'Tel to IP Routing' table refer to the V7111 SIP User's Manual.

- 8 Allocate V7111 endpoints (analog lines) and their corresponding phone numbers to incoming IP calls by completing these steps:
 - Click the arrow button next to the 'Endpoint Phone Number' label; the 'Endpoint Phone Numbers' screen opens.
 - Enter the number of a channel, starting with 1, (or a group of channels), under the 'Channel(s)' column (for example 1-4 for the first 4 endpoints).
 - Assign each channel a phone number (for a group of channels, define the first number in an ordered sequence)
 - Click the **Submit** button; the 'Endpoint Phone Number' table is automatically updated.
 - Click **Quick Setup**; you're returned to the 'Quick Setup' screen.
- 9 Click the **Reset** button and click **OK** in the prompt; the V7111 applies the changes and restarts. This takes approximately 2 minutes to complete. When the V7111 has finished restarting, the Power and Ready LEDs on the front panel are lit green.

Example of Connecting Two xxx Devices

Not applicable at this release.

Figure 22 Example of Connecting Two xxx Devices

Not applicable at this release.

CHAPTER 4: CHANGING THE V7111 USERNAME AND PASSWORD

To prevent unauthorized access to the Embedded Web Server, two user accounts are available, a primary and secondary. For detailed information on the user account mechanism, refer to the V7111 User's Manual.

It is recommended that you change the default username and password of the account you use to access the Embedded Web Server.

To change the username and password, follow these 3 steps:

- 1 Open the 'Web User Accounts' screen (**Advanced Configuration** menu > **Security Settings** > **Web User Accounts** option); the 'Web User Accounts' screen is displayed.

Figure 23 Web User Accounts Screen

Web User Accounts	
Current Logged User: Admin	
Account Data for User: Admin	
User Name	<input type="text" value="Admin"/> <input type="button" value="Change User Name"/>
Access Level	<input type="text" value="Security Administrator"/> <input type="button" value="Change Access Level"/>
Fill in the following 3 fields to change the password	
Current Password	<input type="text"/>
New Password	<input type="text"/>
Confirm New Password	<input type="text"/> <input type="button" value="Change Password"/>
Account Data for User: User	
User Name	<input type="text" value="User"/> <input type="button" value="Change User Name"/>
Access Level	<input type="text" value="Administrator"/> <input type="button" value="Change Access Level"/>
Fill in the following 3 fields to change the password	
Current Password	<input type="text"/>
New Password	<input type="text"/>
Confirm New Password	<input type="text"/> <input type="button" value="Change Password"/>

- 2 To change the username of an account, enter the new username in the field 'User Name' and click the button **Change User Name**; the new username is applied immediately and the 'Enter Network Password' screen appears (shown in [Figure 18](#)). Enter the updated username in the 'Enter Network Password' screen. Note that the username can be a maximum of 19 case-sensitive characters.
- 3 To change the password of an account, enter the current password in the field 'Current Password', the new password in the fields 'New Password' and 'Confirm New Password' and click the button **Change Password**; the new password is applied immediately and the 'Enter Network Password' screen appears (shown in [Figure 18](#)). Enter the updated password in the 'Enter Network Password' screen. Note that the password can be a maximum of 19 case-sensitive characters.

CHAPTER 5: RESTORING AND BACKING UP THE V7111 CONFIGURATION

The 'Configuration File' screen enables you to restore (load a new *ini* file to the gateway) or to back up (make a copy of the VoIP gateway *ini* file and store it in a directory on your PC) the current configuration the gateway is using.

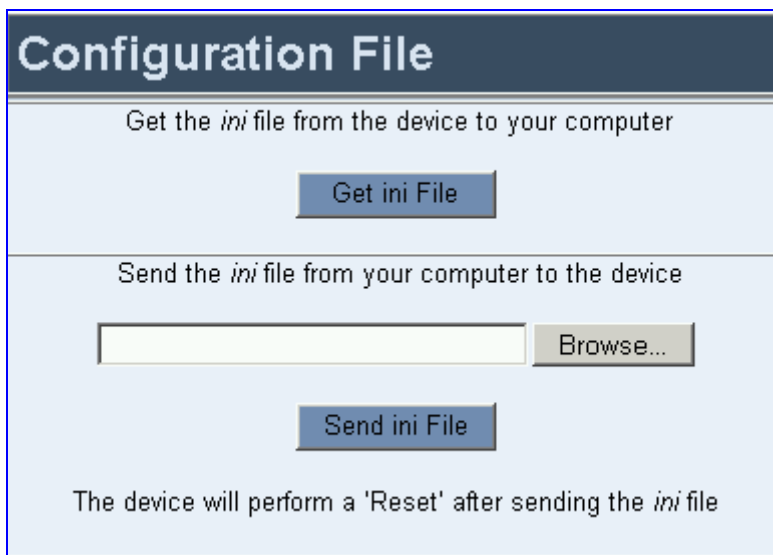
Back up your configuration if you want to protect your VoIP gateway programming. The backup *ini* file includes only those parameters that were modified and contain other than default values.

Restore your configuration if the VoIP gateway has been replaced or has lost its programming information, you can restore the VoIP gateway configuration from a previous backup or from a newly created *ini* file. To restore the VoIP gateway configuration from a previous backup you must have a backup of the VoIP gateway information stored on your PC.

To restore or back up the *ini* file:

- Open the 'Configuration File' screen (**Advanced Configuration** menu > **Configuration File**); the 'Configuration File' screen is displayed.

Figure 24 Configuration File Screen



The screenshot shows a web interface titled "Configuration File". It has a light blue background and a dark blue header. The main content area is divided into two sections. The top section is titled "Get the *ini* file from the device to your computer" and contains a single button labeled "Get ini File". The bottom section is titled "Send the *ini* file from your computer to the device" and contains a text input field, a "Browse..." button, and a "Send ini File" button. At the bottom of the screen, there is a note: "The device will perform a 'Reset' after sending the *ini* file".

To back up the *ini* file, follow these 4 steps:

- 1 Click the **Get ini File** button; the 'File Download' window opens.
- 2 Click the **Save** button; the 'Save As' window opens.
- 3 Navigate to the folder where you want to save the *ini* file.
- 4 Click the **Save** button; the VoIP gateway copies the *ini* file into the folder you selected.

To restore the *ini* file, follow these 4 steps:

- 1 Click the **Browse** button.
- 2 Navigate to the folder that contains the *ini* file you want to load.
- 3 Click the file and click the **Open** button; the name and path of the file appear in the field beside the **Browse** button.
- 4 Click the **Send ini File** button, and click **OK** in the prompt; the gateway is automatically reset (from the *cmp* version stored on the flash memory).

CHAPTER 6: MONITORING THE V7111

The V7111 provides several ways of monitoring the status of the gateway:

- Monitoring the V7111 front panel LEDs (see [Monitoring the V7111 Front Panel LEDs](#)).
- Monitoring the V7111 channels via the Embedded Web Server (see [Monitoring the V7111 Channels](#)).

Monitoring the V7111 Front Panel LEDs

The V7111 front panel LEDs indicate the Ethernet LAN status, Data (RTP) activity and state of the gateway ports. [Table 10](#) and [Table 12](#) describe the meaning of each state of the LEDs on the front panel.

Table 10 Definition of V7111 Front Panel LED Indicators

LED	Type	Color	State	Definition
Ready	Device Status	Green	On	Device powered, self-test OK
			Off	Software loading or System failure
Uplink	Ethernet Link Status	Green	On	Valid 10/100 Base-TX Ethernet connection
			Off	No uplink
Power	Power Supply Status	Green	On	Power is currently being supplied to the device
			Off	Either there's a failure / disruption in the AC power supply or power is currently not being supplied to the device through the AC power supply entry.
Fail	Failure Indication	Red	On	Failure (fatal error). Or system initialization.
			Off	Normal working condition
Channels Status	Telephone Interface	Green	Blinking	The phone is ringing (incoming call, before answering).
			Fast Blinking	Line malfunction
			Off	Normal onhook position
			On	Offhook

Table 11 Definition of V7111 24-PORT Front Panel LED Indicators

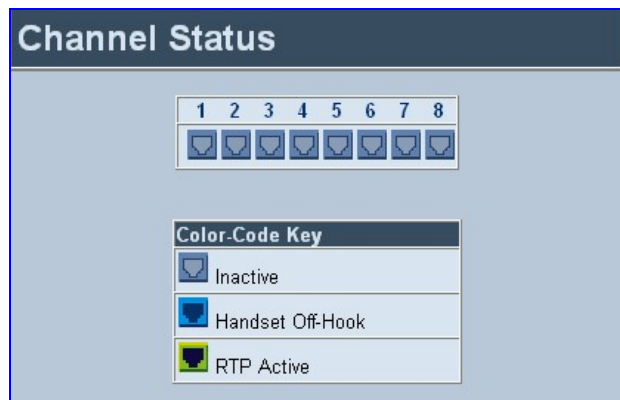
Label	Type	Color	State	Function
Ready	Device Status	Green	ON	Device Powered, self-test OK
		Orange	Blinking	Software Loading/Initialization
		Red	ON	Malfunction
LAN	Ethernet Link Status	Green	ON	Valid 10/100 Base-TX Ethernet connection
		Red	ON	Malfunction
Control	Control Link	Green	Blinking	Sending and receiving SIP messages
		Blank		No traffic
Data	Packet Status	Green	Blinking	Transmitting RTP (Real-Time Transport Protocol) Packets
		Red	Blinking	Receiving RTP Packets
		Blank	-	No traffic
Channels	Telephone Interface	Green	ON	Offhook / Ringing for FXS Phone Port FXO Line-Seize/Ringing State for Line Port
		Green	Blinking	There's an incoming call, before answering
		Red	ON	Line Malfunction
		Blank	-	Normal

Monitoring the V7111 Channels

To monitor the status of the channels:



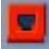

- Open the Channel Status screen (**Status & Diagnostics** menu > **Channel Status**); the Channel Status screen is displayed.

Figure 25 V7111/FXS Channel Status Screen



The color of each channel shows the call status of that channel. See [Table 12](#) for information on the different statuses a call can have.

Table 12 Channel Status Color Indicators

Indicator	Color	Label	Description
	Gray	Inactive	Indicates this channel is currently onhook
	Lime Green	RTP Active	Indicates an active RTP stream.
	Red	Not Connected (FXO only)	Indicates that no analog line is connected to this port.
	Blue	Handset Offhook	Indicates this channel is offhook but there is no active RTP session.

To monitor the details of a channel, follow these 2 steps:

- 1 In the Channel Status screen, click the numbered icon of the specific channel whose detailed status you need to check/monitor; the channel-specific **Channel Status** screen appears.
- 2 Click the submenu links to check/view a specific channel's parameter settings

CHAPTER 7: UPGRADING THE V7111

To upgrade the V7111 (load new software or auxiliary files onto the VoIP gateway) use the Software Update feature, available through the Embedded Web Server.

The 'Software Update' menu comprises two submenus:

- Software Update Wizard (see [Software Upgrade Wizard](#)).
- Auxiliary Files (see [Updating the Auxiliary Files](#)).



When you upgrade the V7111 software you must load the new cmp file with all other related configuration files: coefficient, Call Progress Tones, Voice Prompts and Prerecorded Tones.

Software Upgrade Wizard

The Software Upgrade Wizard guides users through the process of software upgrade: selecting files and loading them to the gateway. The wizard also enables users to upgrade software while maintaining the existing configuration. Using the wizard obligates users to load a *cmp* file. Users can choose to also use the Wizard to load auxiliary files (*ini*, Call Progress Tones, Voice Prompts and FXS coefficient files) but this option cannot be pursued without loading the *cmp* file. For each auxiliary file type, users can choose to reload an existing file, load a new file or not load a file at all.

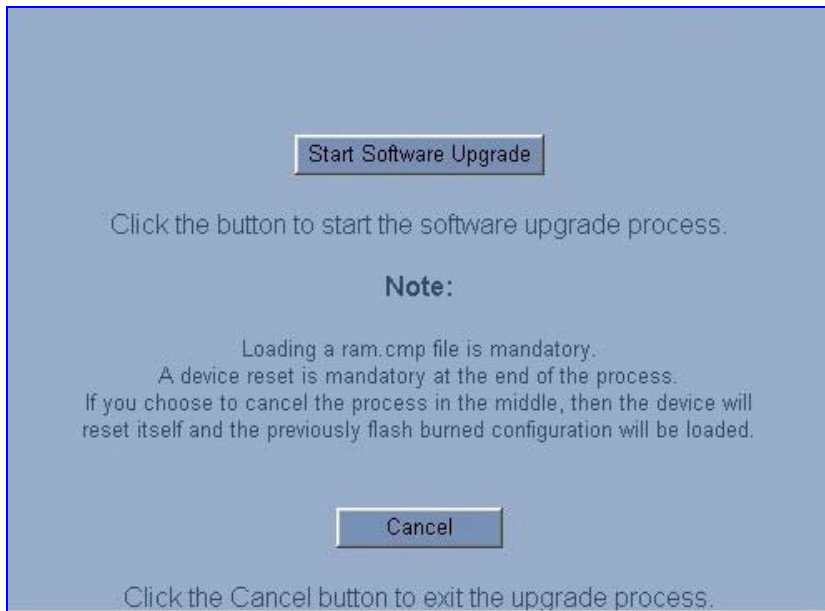


The Software Upgrade Wizard requires the device to be reset at the end of the process. This disrupts any traffic existing on the device. To avoid disruption, disable all traffic on the device before initiating the Wizard.

To use the Software Upgrade Wizard, follow these 9 steps:

- 1 Stop all traffic on the device (refer to the note above).
- 2 Open the 'Software Upgrade Wizard' (**Software Update** menu > **Software Upgrade Wizard**); the 'Start Software Upgrade' screen appears.

Figure 26 Start Software Upgrade Screen



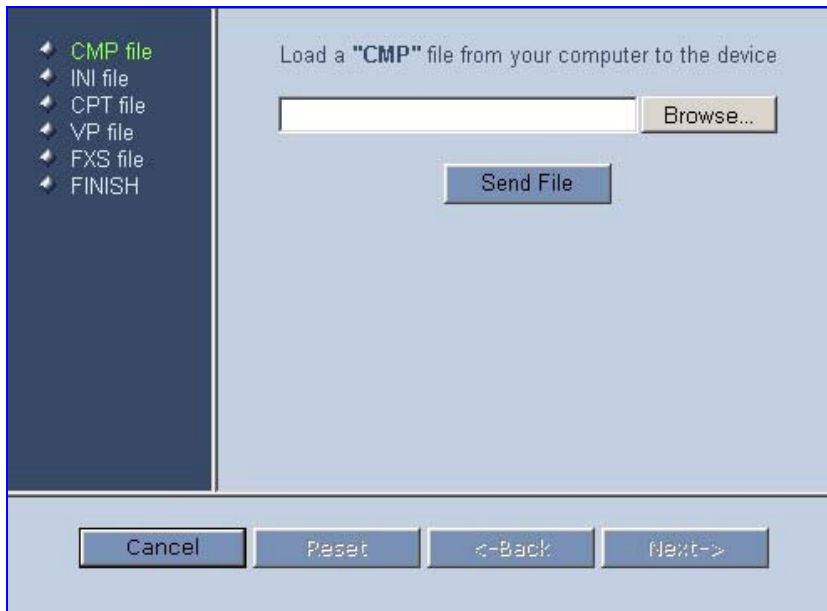
*At this point, the process can be canceled with no consequence to the device (click the **Cancel** button). If you continue the process (by clicking the **Start Software Upgrade** button, the process must be followed through and completed with a device reset at the end. If you click the **Cancel** button in any of the subsequent screens, the device is automatically reset with the configuration that was previously burned in flash memory.*

- 3 Click the **Start Software Upgrade** button; the 'Load a cmp file' screen appears ([Figure 27](#)).



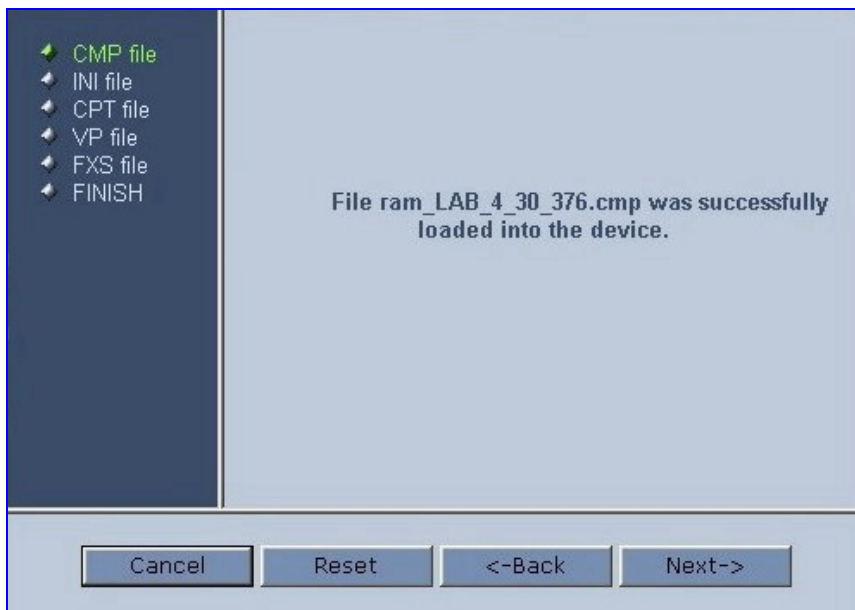
When in the Wizard process, the rest of the Web application is unavailable and the background Web screen is disabled. After the process is completed, access to the full Web application is restored.

Figure 27 Load a *cmp* File Screen



- 4 Click the **Browse** button, navigate to the *cmp* file and click the button **Send File**; the *cmp* file is loaded to the device and you're notified as to a successful loading (see [Figure 28](#)).

Figure 28 File Successfully Loaded into the Device Notification



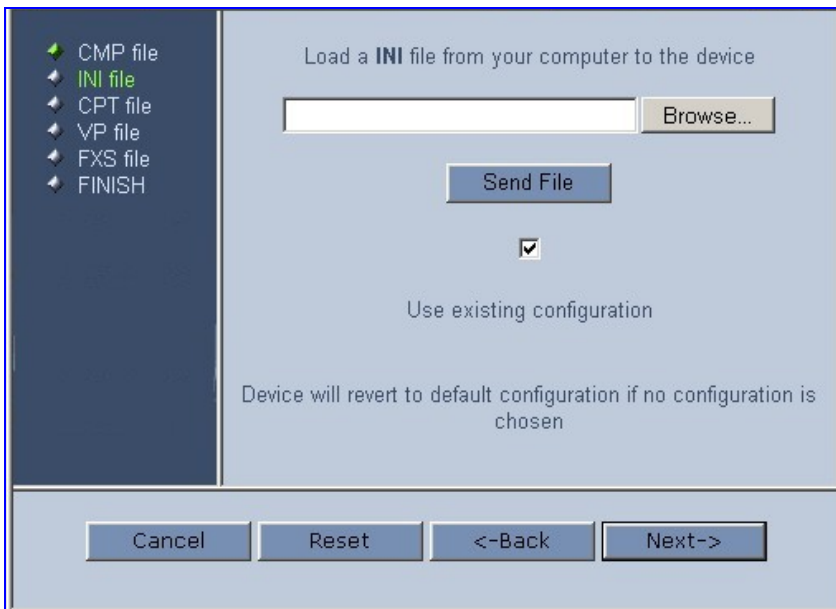
- 5 Note that the four action buttons (**Cancel**, **Reset**, **Back**, and **Next**) are now activated (following *cmp* file loading).

You can now choose to either:

- Click **Reset**; the device resets, utilizing the new *cmp* you loaded and utilizing the current configuration files.
- Click **Cancel**; the device resets utilizing the *cmp*, *ini* and all other configuration files that were previously stored in flash memory. Note that these are NOT the files you loaded in the previous Wizard steps.
- Click **Back**; the 'Load a *cmp* File' screen is reverted to; see [Figure 27](#).
- Click **Next**; the 'Load an *ini* File' screen opens; see [Figure 29](#). Loading a new *ini* file or any other auxiliary file listed in the Wizard is optional.

Note that as you progress, the file type list on the left indicates which file type loading is in process by illuminating green (until 'FINISH').

Figure 29 Load an *ini* File Screen



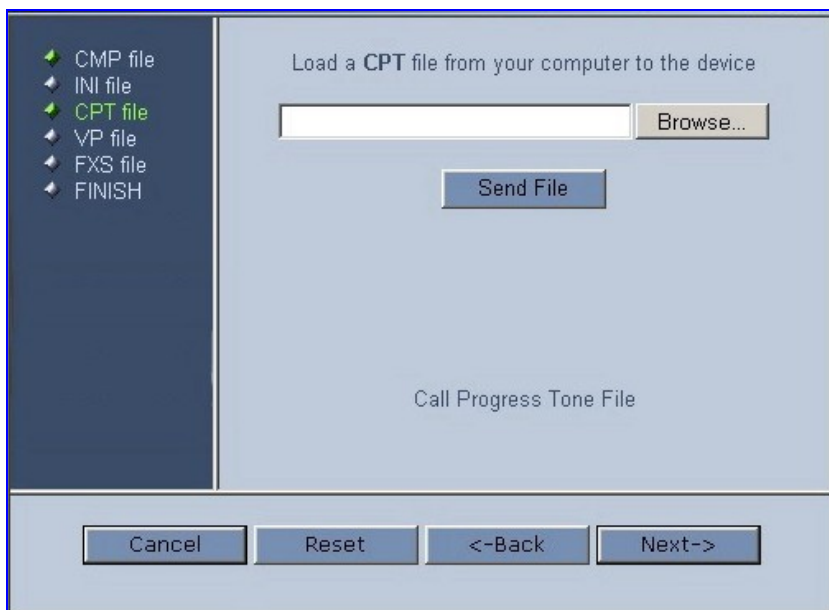
6 In the 'Load an *ini* File' screen, you can now choose to either:

- Click **Browse** and navigate to the *ini* file; the check box 'Use existing configuration', by default checked, becomes unchecked. Click **Send File**; the *ini* file is loaded to the device and you're notified as to a successful loading.
- Ignore the **Browse** button (its field remains undefined and the check box 'Use existing configuration' remains checked by default).
- Ignore the **Browse** button and uncheck the 'Use existing configuration' check box; no *ini* file is loaded, the device uses its factory-preconfigured values.

You can now choose to either:

- Click **Cancel**; the device resets utilizing the *cmp*, *ini* and all other configuration files that were previously stored in flash memory. Note that these are NOT the files you loaded in the previous Wizard steps.
- Click **Reset**; the device resets, utilizing the new *cmp* and *ini* file you loaded up to now as well as utilizing the other configuration files.
- Click **Back**; the 'Load a *cmp* file' screen is reverted to; see [Figure 27](#).
- Click **Next**; the 'Load a CPT File' screen opens (see [Figure 30](#)); Loading a new CPT file or any other auxiliary file listed in the Wizard is optional.

Figure 30 Load a CPT File Screen



- 7 Follow the same procedure you followed when loading the *ini* file (see [Step 6](#)). The same procedure applies to the 'Load a VP file' (not applicable to the V7111 gateway) screen and 'Load a coefficient file' screen.
- 8 In the 'FINISH' screen (see [Figure 31](#)), the **Next** button is disabled. Complete the upgrade process by clicking **Reset** or **Cancel**.
 - Click **Reset**, the V7111 'burns' the newly loaded files to flash memory. The 'Burning files to flash memory' screen appears. Wait for the 'burn' to finish. When it finishes, the 'End Process' screen appears displaying the burned configuration files (see [Figure 32](#)).
 - Click **Cancel**, the V7111 resets, utilizing the files previously stored in flash memory. (Note that these are NOT the files you loaded in the previous Wizard steps).

Figure 31 FINISH Screen

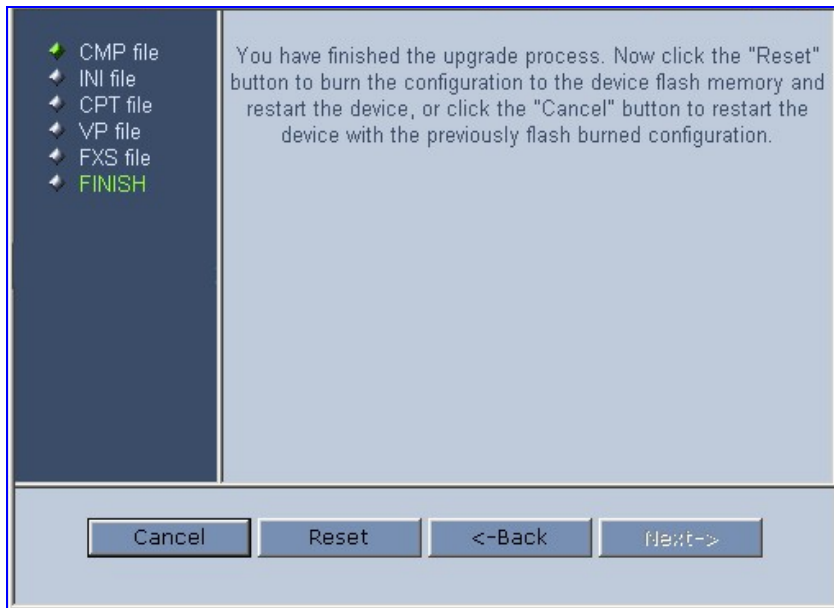
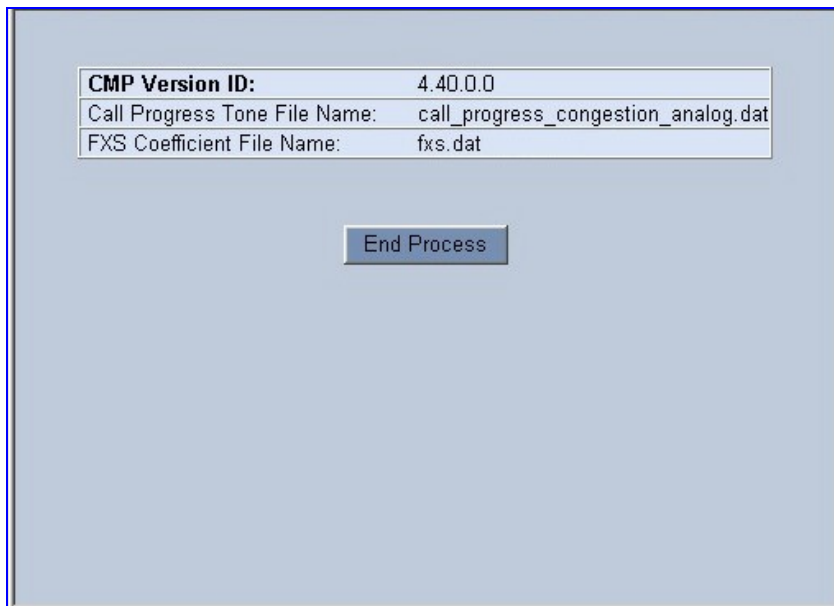


Figure 32 'End Process' Screen





- 9 Click the **End Process** button; the 'Quick Setup' screen appears and the full Web application is reactivated.

Updating the Auxiliary Files

The auxiliary files are configuration *dat* files that are loaded to the gateway (in addition to the *ini* file) to enable enhanced gateway provisioning. The following common auxiliary files are available: coefficient, Voice Prompts (MGCP only) and Call Progress Tones (CPT). For information on additional auxiliary files, refer to the V7111 User's Manual. [Table 13](#) presents a brief description of the *ini* file and of each auxiliary file.

Table 13 *ini* and Auxiliary Files Descriptions

File Type	Description
Ini	<p>Load this file to provision the device's parameters. The Embedded Web Server enables practically full device provisioning but customers may occasionally require new feature configuration parameters in which case this file is loaded. Note that loading the <i>ini</i> file only provisions parameters that are contained in the <i>ini</i> file. If a parameter is not specified in the <i>ini</i> file, values associated with that parameter are reset to a default value. These values may not be the same as the values that were configured for the VoIP gateway at the time of manufacture.</p> <p> <i>After the file has completed loading, the VoIP gateway automatically restarts (software is loaded from the flash).</i></p>
FXS Coefficient	<p>This file contains the telephony interface configuration information for the VoIP gateway. This information includes telephony interface characteristics, such as DC and AC impedance, feeding current and ringing voltage. This file is specific to the type of telephony interface that the VoIP gateway supports. In most cases you have to load this type of file.</p> <p> <i>Use the parameter 'CountryCoefficients' (described in the V7111 User's Manual) to configure the FXO coefficients.</i></p>
Voice Prompts	<p>The voice announcement file contains a set of Voice Prompts to be played by the V7111 during operation on Call Agent request. Only MGCP is supported.</p>
Call Progress Tones	<p>This is a region-specific, telephone exchange-dependent file that contains the Call Progress Tones levels and frequencies that the VoIP gateway uses. Default CPT file: U.S.A.</p>

To load an auxiliary file via the Embedded Web Server, follow these 6 steps:

- 1 Open the 'Auxiliary Files' screen (**Software Update** menu > **Load Auxiliary Files**); the 'Auxiliary Files' screen is displayed (shown [Figure 33](#)).
- 2 Click the **Browse** button that is in the field for the type of file you want to load.
- 3 Navigate to the folder that contains the file you want to load.
- 4 Click the file and click the **Open** button; the name and path of the file appear in the field next to the **Browse** button.
- 5 Click the **Send File** button adjacent to the field that contains the name of the file you want to load. An asterisk in the screen section indicates that the file's loading takes effect on-the-fly (e.g., Voice Prompts file).
- 6 Repeat Steps 2 to 5 for each file you want to load.

Figure 33 Auxiliary Files Screen (MGCP Gateways)

The screenshot shows a web interface titled "Auxiliary Files" with a dark blue header. Below the header, there are five distinct sections, each for a different file type. Each section contains a text input field, a "Browse..." button, and a "Send File" button. The sections are:

- Send FXS "Coefficient" file from your computer to the device
- Send "Voice Prompts" file from your computer to the device
- ! Send "Call Progress Tones" file from your computer to the device
- Send "Prerecorded Tones" file from your computer to the device
- Send "Coder Table" file from your computer to the device

To save the loaded auxiliary files to flash memory, follow these 2 steps:

- 1 Click the **Save Configuration** button on the main menu bar; the 'Save Configuration to the Flash Memory' screen is displayed.



Saving an auxiliary file to flash memory may disrupt traffic on the device. To avoid this, disable all traffic on the device before saving to flash memory.

- 2 Click the **Save Configuration** button in the middle of the screen; a confirmation message appears when the save is complete.



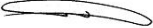
A device reset is required to activate a loaded CPT file, and may be required for the activation of certain ini file parameters.

To reset the V7111, follow these 2 steps:

- 1 Click the **Reset Device** button on the main menu bar; the 'Reset' screen is displayed.
- 2 Click the **Reset** button in the middle of the screen; the auxiliary files are saved into flash and the V7111 restarts. This takes approximately 2 minutes to complete. When the V7111 has finished restarting, the Power and Ready LEDs on the front panel are lit green.

CHAPTER 8: REGULATORY INFORMATION

V7111 FXS Regulatory Information

<i>Declaration of Conformity</i>	
Application of Council Directives:	73/23/EEC (including amendments), 89/336/EEC (including amendments),
Standards to which Conformity is Declared:	EN55022: 1998, Class B EN55024:1998 EN61000-3-2: 1995 (including amendments A1: 1998, A2: 1998, A14: 2000) EN61000-3-3: 1995 EN60950-1: 2001
Manufacturer's Name:	3Com Ltd.
Manufacturer's Address:	1 Hayarden Street, Airport City, Lod 70151, Israel.
Type of Equipment:	Analog VoIP System.
Model Numbers:	MP-112/ 2 FXS; MP-114/ 4 FXS; MP-118/ 8 FXS
:	
I, the undersigned, hereby declare that the equipment specified above conforms to the above Directives and Standards.	
	11 th February 2005 Airport City, Lod, Israel
<i>Signature</i> I. Zusmanovich, Compliance Engineering Manager	<i>Date (Day/Month/Year)</i> <i>Location</i>

Czech	[3Com Ltd] tímto prohlašuje, že tento [V7111/FXS series] je ve shodě se základními požadavky a dalšími příslušnými ustanoveními směrnice 89/336/EEC, 73/23/EEC.
Danish	Undertegnede [3Com Ltd] erklærer herved, at følgende udstyr [V7111/FXS Series] overholder de væsentlige krav og øvrige relevante krav i direktiv 89/336/EEC, 73/23/EEC.
Dutch	Hierbij verklaart [3Com Ltd] dat het toestel [V7111/FXS Series] in overeenstemming is met de essentiële eisen en de andere relevante bepalingen van richtlijn 89/336/EEC, 73/23/EEC
English	Hereby, [3Com Ltd], declares that this [V7111/FXS Series] is in compliance with the essential requirements and other relevant provisions of Directive 89/336/EEC, 73/23/EEC.
Estonian	Käesolevaga kinnitab [3Com Ltd] seadme [V7111/FXS Series] vastavust direktiivi 89/336/EEC, 73/23/EEC põhinõuetele ja nimetatud direktiivist tulenevatele teistele asjakohastele sätetele.
Finnish	[3Com Ltd] vakuuttaa täten että [V7111/FXS Series] tyypinen laite on direktiivin 89/336/EEC, 73/23/EEC oleellisten vaatimusten ja sitä koskevien direktiivin muiden ehtojen mukainen.

French	Par la présente [3Com Ltd] déclare que l'appareil [V7111/FXS Series] est conforme aux exigences essentielles et aux autres dispositions pertinentes de la directive 89/336/EEC, 73/23/EEC
German	Hiermit erklärt [3Com Ltd], dass sich dieser/diese/dieses [V7111/FXS Series] in Übereinstimmung mit den grundlegenden Anforderungen und den anderen relevanten Vorschriften der Richtlinie 89/336/EEC, 73/23/EEC befindet". (BMW i)
Greek	ΜΕ ΤΗΝ ΠΑΡΟΥΣΑ [3Com Ltd] ΔΗΛΩΝΕΙ ΟΤΙ [V7111/FXS Series] ΣΥΜΜΟΡΦΩΝΕΤΑΙ ΠΡΟΣ ΤΙΣ ΟΥΣΙΩΔΕΙΣ ΑΠΑΙΤΗΣΕΙΣ ΚΑΙ ΤΙΣ ΛΟΙΠΕΣ ΣΧΕΤΙΚΕΣ ΔΙΑΤΑΞΕΙΣ ΤΗΣ ΟΔΗΓΙΑΣ 89/336/EEC, 73/23/EEC
Hungarian	Alulírott, [3Com Ltd] nyilatkozom, hogy a [V7111/FXS Series] megfelel a vonatkozó alapvető követelményeknek és az 89/336/EEC, 73/23/EEC irányelv egyéb előírásainak
Icelandic	æki þetta er í samræmi við tilskipun Evrópusambandsins 89/336/EEC, 73/23/EEC
Italian	Con la presente [3Com Ltd] dichiara che questo (V7111/FXS Series) è conforme ai requisiti essenziali ed alle altre disposizioni pertinenti stabilite dalla direttiva 89/336/EEC, 73/23/EEC.
Latvian	Ar šo [3Com Ltd] deklarē, ka [V7111/FXS Series] atbilst Direktīvas 89/336/EEC, 73/23/EEC būtiskajām prasībām un citiem ar to saistītajiem noteikumiem.
Lithuanian	[3Com Ltd] deklaruoja, kad irenginys [V7111/FXS Series] tenkina 89/336/EEC, 73/23/EEC Direktyvos esminius reikalavimus ir kitas šios direktyvos nuostatas
Maltese	Hawnhekk, [3Com Ltd], jiddikjara li dan [V7111/FXS Series] jikkonforma mal-ħtiġijiet essenzjali u ma provvedimenti oħrajn relevanti li hemm fid-Dirrettiva 89/336/EEC, 73/23/EEC
Norwegian	Dette produktet er i samhörighet med det Europeiske Direktiv 89/336/EEC, 73/23/EEC
Polish	[3Com Ltd], deklarujemy z pełna odpowiedzialnością, że wyrób [V7111/FXS Series] spełnia podstawowe wymagania i odpowiada warunkom zawartym w dyrektywie 89/336/EEC, 73/23/EEC
Portuguese	[3Com Ltd] declara que este [V7111/FXS Series] está conforme com os requisitos essenciais e outras disposições da Directiva 89/336/EEC, 73/23/EEC.
Slovak	[3Com Ltd] týmto vyhlasuje, že [V7111/FXS Series] spĺňa základné požiadavky a všetky príslušné ustanovenia Smernice 89/336/EEC, 73/23/EEC.
Slovene	Šiuo [3Com Ltd] deklaruoja, kad šis [V7111/FXS Series] atitinka esminius reikalavimus ir kitas 89/336/EEC, 73/23/EEC Direktyvos nuostatas.
Spanish	Por medio de la presente [3Com Ltd] declara que el (V7111/FXS Series) cumple con los requisitos esenciales y cualesquiera otras disposiciones aplicables o exigibles de la Directiva 89/336/EEC, 73/23/EEC
Swedish	Härmed intygar [3Com Ltd] att denna [V7111/FXS Series] står i överensstämmelse med de väsentliga egenskapskrav och övriga relevanta bestämmelser som framgår av direktiv 89/336/EEC, 73/23/EEC.

Safety Notice

Installation and service of this unit must only be performed by authorized, qualified service personnel. To avoid risk of fire use 26AWG or higher wiring to connect the FXS telecom ports.

Telecommunication Safety

The safety status of each port on the gateway is declared and detailed in the table below:

Ports	Safety Status
Ethernet (100 Base-TX)	SELV
FXS	TNV-3

TNV-3: Circuit whose normal operating voltages exceeds the limits for an SELV circuit under normal operating conditions and on which over voltages from Telecommunication Networks are possible

SELV: Safety extra low voltage circuit.

FCC Statement

This equipment has been tested and found to comply with the limits for a Class B digital device, pursuant to part 15 of the FCC Rules. These limits are designed to provide reasonable protection against harmful interference in a residential installation. This equipment generates uses and can and can radiate radio frequency energy and, if not installed and used in accordance with the instructions, may cause harmful interference to radio communications. However there is no guarantee that interference will not occur in a particular installation. If this equipment does cause harmful interference to radio or television reception, which can be determined by turning the equipment off and on, the user is encouraged to try to correct the interference by one or more of the following measures:


- Reorient or relocate the receiving antenna.
- Increase the separation between the equipment and receiver.
- Connect the equipment into an outlet on a circuit different from that to which the receiver is connected.
- Consult the dealer or an experienced radio/TV technician for help.

V7111 FXO Regulatory Information

Declaration of Conformity

Application of Council Directives:	73/23/EEC (including amendments), 89/336/EEC (including amendments), 1999/5/EC Annex-II of the Directive
Standards to which Conformity is Declared:	EN55022: 1998, Class B EN55024:1998 EN61000-3-2: 1995 (including amendments A1: 1998, A2: 1998, A14: 2000) EN61000-3-3: 1995 EN60950-1: 2001 TBR-21: 1998
Manufacturer's Name:	3Com Ltd.
Manufacturer's Address:	1 Hayarden Street, Airport City, Lod 70151, Israel.
Type of Equipment:	Analog VoIP System.
Model Numbers:	MP-112/ 2 FXO; MP-114 4 /FXO; MP-118/ 8 FXO

I, the undersigned, hereby declare that the equipment specified above conforms to the above Directives and Standards.

	28 th February 2006	Airport City, Lod, Israel
<i>Signature</i>	<i>Date (Day/Month/Year)</i>	<i>Location</i>

I. Zusmanovich, Compliance Engineering Manager

Czech	[3Com Ltd] tímto prohlašuje, že tento [MP-1xx/FXO Series] je ve shodě se základními požadavky a dalšími příslušnými ustanoveními směrnice 1999/5/ES."
Danish	Undertegnede [3Com Ltd] erklærer herved, at følgende udstyr [MP-1xx/FXO Series] overholder de væsentlige krav og øvrige relevante krav i direktiv 1999/5/EF
Dutch	Hierbij verklaart [3Com Ltd] dat het toestel [MP-1xx/FXO Series] in overeenstemming is met de essentiële eisen en de andere relevante bepalingen van richtlijn 1999/5/EG
English	Hereby, [3Com Ltd], declares that this [MP-1xx/FXO Series] is in compliance with the essential requirements and other relevant provisions of Directive 1999/5/EC.
Estonian	Käesolevaga kinnitab [3Com Ltd] seadme [MP-1xx/FXO Series] vastavust direktiivi 1999/5/EÜ põhinõuetele ja nimetatud direktiivist tulenevatele teistele asjakohastele sätetele.
Finnish	[3Com Ltd] vakuuttaa täten että [MP-1xx/FXO Series] tyypinen laite on direktiivin 1999/5/EY oleellisten vaatimusten ja sitä koskevien direktiivin muiden ehtojen mukainen.
French	Par la présente [3Com Ltd] déclare que l'appareil [MP-1xx/FXO Series] est conforme aux exigences essentielles et aux autres dispositions pertinentes de la directive 1999/5/CE
German	Hiermit erklärt [3Com Ltd], dass sich dieser/diese/dieses [MP-1xx/FXO Series] in Übereinstimmung mit den grundlegenden Anforderungen und den anderen relevanten Vorschriften der Richtlinie 1999/5/EG befindet". (BMW i)
Greek	ΜΕ ΤΗΝ ΠΑΡΟΥΣΑ [3Com Ltd] ΔΗΛΩΝΕΙ ΟΤΙ [MP-1xx/FXO Series] ΣΥΜΜΟΡΦΩΝΕΤΑΙ ΠΡΟΣ ΤΙΣ ΟΥΣΙΩΔΕΙΣ ΑΠΑΙΤΗΣΕΙΣ ΚΑΙ ΤΙΣ ΛΟΙΠΕΣ ΣΧΕΤΙΚΕΣ ΔΙΑΤΑΞΕΙΣ ΤΗΣ ΟΔΗΓΙΑΣ 1999/5/ΕΚ

Hungarian	Alulírott, [3Com Ltd] nyilatkozom, hogy a [MP-1xx/FXO Series] megfelel a vonatkozó alapvető követelményeknek és az 1999/5/EC irányelv egyéb előírásainak
Icelandic	æki þetta er í samræmi við tilskipun Evrópusambandsins 1999/5
Italian	Con la presente [3Com Ltd] dichiara che questo [MP-1xx/FXO Series] è conforme ai requisiti essenziali ed alle altre disposizioni pertinenti stabilite dalla direttiva 1999/5/CE.
Latvian	Ar šo [3Com Ltd] deklarē, ka [MP-1xx/FXO Series] atbilst Direktīvas 1999/5/EK būtiskajām prasībām un citiem ar to saistītajiem noteikumiem.
Lithuanian	[3Com Ltd] deklaruoja, kad irenginys [MP-1xx/FXO Series] tenkina 1999/5/EB Direktyvos esminius reikalavimus ir kitas šios direktyvos nuostatas
Maltese	Hawnhekk, [3Com Ltd], jiddikjara li dan [MP-1xx/FXO Series] jikkonforma mal-ħtiġijiet essenzjali u ma provvedimenti oħrajn relevanti li hemm fid-Dirrettiva 1999/5/EC
Norwegian	Dette produktet er i samhörighet med det Europeiske Direktiv 1999/5
Polish	[3Com Ltd], deklaruje z pełna odpowiedzialnością, że wyrób [MP-1xx/FXO Series] spełnia podstawowe wymagania i odpowiada warunkom zawartym w dyrektywie 1999/5/EC
Portuguese	[3Com Ltd] declara que este [MP-1xx/FXO Series] está conforme com os requisitos essenciais e outras disposições da Directiva 1999/5/CE.
Slovak	[3Com Ltd] týmto vyhlasuje, že [MP-1xx/FXO Series] spĺňa základné požiadavky a všetky príslušné ustanovenia Smernice 1999/5/ES.
Slovene	Šiuo [3Com Ltd] deklaruoja, kad šis [MP-1xx/FXO Series] atitinka esminius reikalavimus ir kitas 1999/5/EB Direktyvos nuostatas.
Spanish	Por medio de la presente [3Com Ltd] declara que el [MP-1xx/FXO Series] cumple con los requisitos esenciales y cualesquiera otras disposiciones aplicables o exigibles de la Directiva 1999/5/CE
Swedish	Härmed intygar [3Com Ltd] att denna [MP-1xx/FXO Series] står i överensstämmelse med de väsentliga egenskapskrav och övriga relevanta bestämmelser som framgår av direktiv 1999/5/EG.

Safety Notice

Installation and service of this unit must only be performed by authorized, qualified service personnel. To avoid risk of fire use 26AWG or higher wiring to connect the FXO telecom ports.

Industry Canada Notice

This equipment meets the applicable Industry Canada Terminal Equipment technical specifications. This is confirmed by the registration numbers. The abbreviation, IC, before the registration number signifies that registration was performed based on a declaration of conformity indicating that Industry Canada technical specifications were met. It does not imply that Industry Canada approved the equipment.

FXO Only: The Ringer Equivalence Number (REN) for this terminal is 0.5. The REN assigned to each terminal equipment provides an indication of the maximum number of terminals allowed to be connected to a telephone interface. The termination on an interface may consist of any combination of devices subject only to the requirement that the sum of Ringer Equivalence Number of all devices do not exceed five.

Network Compatibility

The products support the Telecom networks in EU that comply with TBR21.

Telecommunication Safety

The safety status of each port is declared and detailed in the table below:

Ports	Safety Status
Ethernet (100 Base-T)	SELV
FXO	TNV-3

TNV-3: Circuit whose normal operating voltages exceeds the limits for an SELV circuit under normal operating conditions and on which over voltages from Telecommunication Networks are possible.

SELV: Safety extra low voltage circuit.

MP-1xx FXO Notice

The V7111 FXO Output Tones and DTMF level should not exceed -9 dBm (3Com setting #23) in order to comply with FCC 68, TIA/EIA/IS-968 and TBR-21.

The maximum allowed gain between any 2 ports connected to the PSTN should be set to 0 dB in order to comply with FCC 68, TIA/EIA/IS-968 Signal power limitation

FCC Statement

This equipment has been tested and found to comply with the limits for a Class B digital device, pursuant to part 15 of the FCC Rules. These limits are designed to provide reasonable protection against harmful interference in a residential installation. This equipment generates, uses and can radiate radio frequency energy and, if not installed and used in accordance with the instructions, may cause harmful interference to radio communications. However there is no guarantee that interference will not occur in a particular installation. If this equipment does cause harmful interference to radio or television reception, which can be determined by turning the equipment off and on, the user is encouraged to try to correct the interference by one or more of the following measures:

- Reorient or relocate the receiving antenna.
- Increase the separation between the equipment and receiver.

- Connect the equipment into an outlet on a circuit different from that to which the receiver is connected.
- Consult the dealer or an experienced radio/TV technician for help.

V7111 FXS +FXO Regulatory Information

Declaration of Conformity

Application of Council Directives: 73/23/EEC (including amendments),
89/336/EEC (including amendments),
1999/5/EC Annex-II of the Directive

Standards to which Conformity is Declared: EN55022: 1998, Class B
EN55024:1998
EN61000-3-2: 1995
(including amendments A1: 1998, A2: 1998, A14: 2000)
EN61000-3-3: 1995
EN60950-1: 2001
TBR-21: 1998

Manufacturer's Name: 3Com Ltd.

Manufacturer's Address: 1 Hayarden Street, Airport City, Lod 70151, Israel.

Type of Equipment: Analog VoIP System.

Model Numbers: **MP-114/ 2FXS+2FXO (MP-114/2 FXS / 2 FXO / AC)**
MP-118/ 4FXS+4FXO (MP-118/4 FXS / 4 FXO / AC)

I, the undersigned, hereby declare that the equipment specified above conforms to the above Directives and Standards.



28th February 2006 Airport City, Lod, Israel

Signature

I. Zusmanovich, Compliance Engineering Manager

Date (Day/Month/Year) Location

Czech	[3Com Ltd] tímto prohlašuje, že tento [V7111/FXS-FXO series] je ve shodě se základními požadavky a dalšími příslušnými ustanoveními směrnice 89/336/EEC, 73/23/EEC; 1999/5/ES.
Danish	Undertegnede [3Com Ltd] erklærer herved, at følgende udstyr [V7111/FXS-FXO Series] overholder de væsentlige krav og øvrige relevante krav i direktiv 89/336/EEC, 73/23/EEC; 1999/5/ES.
Dutch	Hierbij verklaart [3Com Ltd] dat het toestel [V7111/FXS-FXO Series] in overeenstemming is met de essentiële eisen en de andere relevante bepalingen van richtlijn 89/336/EEC, 73/23/EEC; 1999/5/ES
English	Hereby, [3Com Ltd], declares that this [V7111/FXS-FXO Series] is in compliance with the essential requirements and other relevant provisions of Directive 89/336/EEC, 73/23/EEC; 1999/5/ES.
Estonian	Käesolevaga kinnitab [3Com Ltd] seadme [V7111/FXS-FXO Series] vastavust direktiivi 89/336/EEC, 73/23/EEC; 1999/5/ES põhioletetele ja nimetatud direktiivist tulenevatele teistele asjakohastele sätetele.
Finnish	[3Com Ltd] vakuuttaa täten että [V7111/FXS-FXO Series] tyypinen laite on direktiivin 89/336/EEC, 73/23/EEC; 1999/5/ES oleellisten vaatimusten ja sitä koskevien direktiivin muiden ehtojen mukainen.
French	Par la présente [3Com Ltd] déclare que l'appareil [V7111/FXS-FXO Series] est conforme aux exigences essentielles et aux autres dispositions pertinentes de la directive 89/336/EEC, 73/23/EEC; 1999/5/ES

German	Hiermit erklärt [3Com Ltd], dass sich dieser/diese/dieses [V7111/FXS-FXO Series] in Übereinstimmung mit den grundlegenden Anforderungen und den anderen relevanten Vorschriften der Richtlinie 89/336/EEC, 73/23/EEC; 1999/5/ES befindet". (BMW)
Greek	ΜΕ ΤΗΝ ΠΑΡΟΥΣΑ [3Com Ltd] ΔΗΛΩΝΕΙ ΟΤΙ [V7111/FXS-FXO Series] ΣΥΜΜΟΡΦΩΝΕΤΑΙ ΠΡΟΣ ΤΙΣ ΟΥΣΙΩΔΕΙΣ ΑΠΑΙΤΗΣΕΙΣ ΚΑΙ ΤΙΣ ΛΟΙΠΕΣ ΣΧΕΤΙΚΕΣ ΔΙΑΤΑΞΕΙΣ ΤΗΣ ΟΔΗΓΙΑΣ 89/336/EEC, 73/23/EEC; 1999/5/ES
Hungarian	Alulírott, [3Com Ltd] nyilatkozom, hogy a [V7111/FXS-FXO Series] megfelel a vonatkozó alapvető követelményeknek és az 89/336/EEC, 73/23/EEC; 1999/5/ES irányelv egyéb előírásainak
Icelandic	æki þetta er í samræmi við tilskipun Evrópusambandsins 89/336/EEC, 73/23/EEC; 1999/5/ES
Italian	Con la presente [3Com Ltd] dichiara che questo [V7111/FXS-FXO Series] è conforme ai requisiti essenziali ed alle altre disposizioni pertinenti stabilite dalla direttiva 89/336/EEC, 73/23/EEC; 1999/5/ES.
Latvian	Ar šo [3Com Ltd] deklarē, ka [V7111/FXS-FXO Series] atbilst Direktīvas 89/336/EEC, 73/23/EEC; 1999/5/ES būtiskajām prasībām un citiem ar to saistītajiem noteikumiem.
Lithuanian	[3Com Ltd] deklaruoja, kad irenginys [V7111/FXS-FXO Series] tenkina 89/336/EEC, 73/23/EEC; 1999/5/ES Direktyvos esminius reikalavimus ir kitas šios direktyvos nuostatas
Maltese	Hawnhekk, [3Com Ltd], jiddikjara li dan [V7111/FXS-FXO Series] jikkonforma mal-ftigijiet essenzjali u ma provvedimenti oħrajn relevanti li hemm fid-Dirrettiva 89/336/EEC, 73/23/EEC; 1999/5/ES
Norwegian	Dette produktet er i samhörighet med det Europeiske Direktiv 89/336/EEC, 73/23/EEC; 1999/5/ES
Polish	[3Com Ltd], deklarujemy z pełna odpowiedzialnością, że wyrób [V7111/FXS-FXO Series] spełnia podstawowe wymagania i odpowiada warunkom zawartym w dyrektywie 89/336/EEC, 73/23/EEC; 1999/5/ES
Portuguese	[3Com Ltd] declara que este [V7111/FXS-FXO Series] está conforme com os requisitos essenciais e outras disposições da Directiva 89/336/EEC, 73/23/EEC; 1999/5/ES.
Slovak	[3Com Ltd] týmto vyhlasuje, že [V7111/FXS-FXO Series] spĺňa základné požiadavky a všetky príslušné ustanovenia Smernice 89/336/EEC, 73/23/EEC; 1999/5/ES.
Slovene	Šiuo [3Com Ltd] deklaruoja, kad šis [V7111/FXS-FXO Series] atitinka esminius reikalavimus ir kitas 89/336/EEC, 73/23/EEC; 1999/5/ES Direktyvos nuostatas.
Spanish	Por medio de la presente [3Com Ltd] declara que el [V7111/FXS-FXO Series] cumple con los requisitos esenciales y cualesquiera otras disposiciones aplicables o exigibles de la Directiva 89/336/EEC, 73/23/EEC; 1999/5/ES
Swedish	Härmed intygar [3Com Ltd] att denna [V7111/FXS-FXO Series] står i överensstämmelse med de väsentliga egenskapskrav och övriga relevanta bestämmelser som framgår av direktiv 89/336/EEC, 73/23/EEC; 1999/5/ES.

Safety Notice

Installation and service of this unit must only be performed by authorized, qualified service personnel. To avoid risk of fire use 26AWG or higher wiring to connect the FXS or FXO telecom ports.

Telecommunications Safety

The safety status of each port on the gateway is declared and detailed in the table below:

Ports	Safety Status
Ethernet (100 Base-T)	SELV
FXS	TNV-3
FXO	TNV-3

TNV-3: Circuit whose normal operating voltages exceeds the limits for an SELV circuit under normal operating conditions and on which over voltages from Telecommunication Networks are possible.

SELV: Safety extra low voltage circuit.

FCC Statement

This equipment has been tested and found to comply with the limits for a Class B digital device, pursuant to part 15 of the FCC Rules. These limits are designed to provide reasonable protection against harmful interference in a residential installation. This equipment generates uses and can and can radiate radio frequency energy and, if not installed and used in accordance with the instructions, may cause harmful interference to radio communications. However there is no guarantee that interference will not occur in a particular installation. If this equipment does cause harmful interference to radio or television reception, which can be determined by turning the equipment off and on, the user is encouraged to try to correct the interference by one or more of the following measures:

- Reorient or relocate the receiving antenna.
- Increase the separation between the equipment and receiver.
- Connect the equipment into an outlet on a circuit different from that to which the receiver is connected.
- Consult the dealer or an experienced radio/TV technician for help.

V7111 24-PORT

Declaration of Conformity

Application of Council Directives: 73/23/EEC (including amendments),
89/336/EEC (including amendments),

Standards to which Conformity is Declared: EN55022: 1998, Class A
EN55024: 1998
EN61000-3-2: 1995
(including amendments A1: 1998, A2: 1998, A14: 2000)
EN61000-3-3: 1995
EN60950: 1992 Including amendments 1,2,3,4 and 11

Manufacturer's Name: 3Com Ltd.

Manufacturer's Address: 1 Hayarden Street, Airport City, Lod 70151, Israel.

Type of Equipment: Analog VoIP System.

Model Numbers: **MP-124/FXS**

I, the undersigned, hereby declare that the equipment specified above conforms to the above Directives and Standards.



11th February, 2005

Airport City, Lod, Israel

Signature

I. Zusmanovich, Compliance Engineering Manager

Date (Day/Month/Year) *Location*

Czech	[3Com Ltd] tímto prohlašuje, že tento [V7111 24-PORT] je ve shodě se základními požadavky a dalšími příslušnými ustanoveními směrnice 89/336/EEC, 73/23/EEC.
Danish	Undertegnede [3Com Ltd] erklærer herved, at følgende udstyr [V7111 24-PORT] overholder de væsentlige krav og øvrige relevante krav i direktiv 89/336/EEC, 73/23/EEC.
Dutch	Hierbij verklaart [3Com Ltd] dat het toestel [V7111 24-PORT] in overeenstemming is met de essentiële eisen en de andere relevante bepalingen van richtlijn 89/336/EEC, 73/23/EEC
English	Hereby, [3Com Ltd], declares that this [V7111 24-PORT] is in compliance with the essential requirements and other relevant provisions of Directive 89/336/EEC, 73/23/EEC.
Estonian	Käesolevaga kinnitab [3Com Ltd] seadme [V7111 24-PORT] vastavust direktiivi 89/336/EEC, 73/23/EEC põhinõuetele ja nimetatud direktiivist tulenevatele teistele asjakohastele sätetele.
Finnish	[3Com Ltd] vakuuttaa täten että [V7111 24-PORT] tyypinen laite on direktiivin 89/336/EEC, 73/23/EEC oleellisten vaatimusten ja sitä koskevien direktiivin muiden ehtojen mukainen.
French	Par la présente [3Com Ltd] déclare que l'appareil [V7111 24-PORT] est conforme aux exigences essentielles et aux autres dispositions pertinentes de la directive 89/336/EEC, 73/23/EEC
German	Hiermit erkläre [3Com Ltd], dass sich dieser/diese/dieses [V7111 24-PORT] in Übereinstimmung mit den grundlegenden Anforderungen und den anderen relevanten Vorschriften der Richtlinie 89/336/EEC, 73/23/EEC befindet". (BMW)

Greek	ΜΕ ΤΗΝ ΠΑΡΟΥΣΑ [3Com Ltd] ΔΗΛΩΝΕΙ ΟΤΙ [V7111 24-PORT] ΣΥΜΜΟΡΦΩΝΕΤΑΙ ΠΡΟΣ ΤΙΣ ΟΥΣΙΩΔΕΙΣ ΑΠΑΙΤΗΣΕΙΣ ΚΑΙ ΤΙΣ ΛΟΙΠΕΣ ΣΧΕΤΙΚΕΣ ΔΙΑΤΑΞΕΙΣ ΤΗΣ ΟΔΗΓΙΑΣ 89/336/EEC, 73/23/EEC
Hungarian	Alulírott, [3Com Ltd] nyilatkozom, hogy a [V7111 24-PORT] megfelel a vonatkozó alapvető követelményeknek és az 89/336/EEC, 73/23/EEC irányelv egyéb előírásainak
Icelandic	æki þetta er í samræmi við tilskipun Evrópusambandsins 89/336/EEC, 73/23/EEC
Italian	Con la presente [3Com Ltd] dichiara che questo [V7111 24-PORT] è conforme ai requisiti essenziali ed alle altre disposizioni pertinenti stabilite dalla direttiva 89/336/EEC, 73/23/EEC.
Latvian	Ar šo [3Com Ltd] deklarē, ka [V7111 24-PORT] atbilst Direktīvas 89/336/EEC, 73/23/EEC būtiskajām prasībām un citiem ar to saistītajiem noteikumiem.
Lithuanian	[3Com Ltd] deklaruoja, kad irenginys [V7111 24-PORT] tenkina 89/336/EEC, 73/23/EEC Direktyvos esminius reikalavimus ir kitas šios direktyvos nuostatas
Maltese	Hawnhekk, [3Com Ltd], jiddikjara li dan [V7111 24-PORT] jikkonforma mal-ħtiġijiet essenzjali u ma provvedimenti oħrajn relevanti li hemm fid-Dirrettiva 89/336/EEC, 73/23/EEC
Norwegian	Dette produktet er i samhörighet med det Europeiske Direktiv 89/336/EEC, 73/23/EEC
Polish	[3Com Ltd], deklaruje, że produkt spełnia wymagania i odpowiada warunkom zawartym w dyrektywie 89/336/EEC, 73/23/EEC
Portuguese	[3Com Ltd] declara que este [V7111 24-PORT] está conforme com os requisitos essenciais e outras disposições da Directiva 89/336/EEC, 73/23/EEC.
Slovak	[3Com Ltd] týmto vyhlasuje, že [V7111 24-PORT Series] spĺňa základné požiadavky a všetky príslušné ustanovenia Smernice 89/336/EEC, 73/23/EEC.
Slovene	Šiuo [3Com Ltd] deklarujo, kad šis [V7111 24-PORT Series] atitinka esminius reikalavimus ir kitas 89/336/EEC, 73/23/EEC Direktyvos nuostatas.
Spanish	Por medio de la presente [3Com Ltd] declara que el [V7111 24-PORT Series] cumple con los requisitos esenciales y cualesquiera otras disposiciones aplicables o exigibles de la Directiva 89/336/EEC, 73/23/EEC
Swedish	Härmed intygar [3Com Ltd] att denna [V7111 24-PORT Series] står i överensstämmelse med de väsentliga egenskapskrav och övriga relevanta bestämmelser som framgår av direktiv 89/336/EEC, 73/23/EEC.

Safety Notice

Installation and service of this unit must only be performed by authorized, qualified service personnel.

The protective earth terminal on the back of the V7111 24-PORT must be permanently connected to protective earth.

Telecommunication Safety

The safety status of each port on the gateway is declared and detailed in the table below:

Ports	Safety Status
Ethernet (100 Base-TX)	SELV
FXS (ODP P/N's)	TNV-3
FXS	TNV-2

TNV-3: Circuit whose normal operating voltages exceeds the limits for an SELV circuit under normal operating conditions and on which over voltages from Telecommunication Networks are possible

TNV-2: Circuit whose normal operating voltages exceeds the limits for an SELV circuit under normal operating conditions and is not subjected to over voltages from Telecommunication Networks

SELV: Safety extra low voltage circuit.

FCC Statement

This equipment has been tested and found to comply with the limits for a Class A digital device, pursuant to part 15 of the FCC Rules. These limits are designed to provide reasonable protection against harmful interference when the equipment is operated in a commercial environment. This equipment generates uses and can radiate radio frequency energy and, if not installed and used in accordance with the instruction manual, may cause harmful interference to radio communications. Operation of this equipment in a residential area is likely to cause harmful interference in which case the user will be required to correct the interference at his own expense.

This is a Class A product. In a domestic environment this product may cause radio interference in which case the user may be required to take adequate measures.

OBTAINING SUPPORT FOR YOUR 3COM PRODUCT

Customer Support

Customer technical support and service are provided by 3Com' Distributors, Partners, and Resellers from whom the product was purchased. For Customer support for products purchased directly from 3Com, contact support@3Com.com.

Free Manuals Download Website

<http://myh66.com>

<http://usermanuals.us>

<http://www.somanuals.com>

<http://www.4manuals.cc>

<http://www.manual-lib.com>

<http://www.404manual.com>

<http://www.luxmanual.com>

<http://aubethermostatmanual.com>

Golf course search by state

<http://golfingnear.com>

Email search by domain

<http://emailbydomain.com>

Auto manuals search

<http://auto.somanuals.com>

TV manuals search

<http://tv.somanuals.com>