



# Bluetooth™ PDA and PC Adapter Combo Card

*Enable your PDA or notebook computer with Bluetooth wireless technology*



User Manual  
F8T006-PC

# TABLE OF CONTENTS

<b>Introduction</b> . . . . .	2
<b>Overview</b> . . . . .	3
Product Features . . . . .	3
System Requirements . . . . .	3
Handheld Requirements . . . . .	4
Package Contents . . . . .	4
Specifications . . . . .	5
Supported Profiles . . . . .	6
<b>Software Setup</b> . . . . .	8
<b>Hardware Setup</b> . . . . .	12
<b>Initial Configuration Wizard</b> . . . . .	15
<b>Uninstalling the Software</b> . . . . .	18
<b>Installing the Adapter Card and Software</b> . . . . .	19
<b>Uninstall Bluetooth Manager</b> . . . . .	26
<b>Glossary</b> . . . . .	28
<b>Information</b> . . . . .	30

## INTRODUCTION

Congratulations and thank you for purchasing the *Bluetooth* PDA and PC Adapter Combo Card from Belkin. By inserting the PDA Adapter Card\* (Belkin part number F8T020) into the PC Adapter Card sleeve (Belkin part number F8T007), you create a PDA and PC Adapter Combo Card (Belkin part number F8T006-PC) that installs easily, to enable your notebook computer with *Bluetooth* technology. This User Manual provides information on the PDA and PC Adapter Combo Card's (the Card) functions.

Before you install and start using your new Card, please take a few minutes to review some of the terms that you will be seeing throughout the User Manual. You will find a brief Glossary on page 19.

\*To enable your PDA with *Bluetooth* wireless technology, see the software support materials on the included CD-ROM.



## OVERVIEW

### Product Features

This Card is compliant with **Bluetooth** Standard Version 1.1 and provides:

- Compliancy with *Bluetooth* specification v1.1 devices
- Support for Microsoft® Windows® 98 SE, Me, 2000, XP, Pocket PC 2002, and 2003
- Operating distance of up to 10 meters
- Point-to-multipoint connections
- Support for data rates up to 721Kbps
- Built-in security: up to 128-bit encryption and authentication

### System Requirements

- PC-compatible computer, CPU speed of 200MHz or above
- Memory: 64MB or above, 128MB recommended
- One available PCMCIA Type II slot
- Windows 98 SE, Me, 2000, or XP

## OVERVIEW

### Handheld Requirements

- Genuine Intel® processor
- One available CompactFlash® Type 1 slot
- Microsoft Pocket PC 2002 or 2003

### Package Contents

- *Bluetooth* PDA Adapter Card
- *Bluetooth* PC Adapter Card sleeve
- *Bluetooth* PDA and PC Adapter Combo Card CD-ROM for installation software and documentation
- *Bluetooth* PDA and PC Adapter Combo Card User Manual
- *Bluetooth* PDA and PC Adapter Combo Card Quick Installation Guide
- Registration Card

## OVERVIEW

### Specifications

Bluetooth Compliance:	Version 1.1
Physical Interface:	PCMCIA Type II, CF Type I
Operating Frequency:	2.4 to 2.4835GHz
Output Power:	0 dBm, Class 2
Sensitivity:	<0.1% BER @ -80 dBm
Data Rate:	723/57.6Kbps
Operating Range:	10-meter radius indoors
Network Topology:	Point-to-Multipoint
Packet Support:	1/3/5 Slots Packet
Operation:	Master/Slave
Frequency Stability:	+/- 10PPM
LED Indicator:	Power On/Data Traffic
Antenna Type:	Internal, Extended Back
Dimensions:	101 (L) x 54 (W) x 4mm (H)
Weight:	1.2oz. (34g)

Operating Temp:	0 to 70 degrees Celsius
Storage Temp:	-30 to 85 degrees Celsius
Humidity:	10-90% (non- condensing)
Supply Voltage:	3.3V

*Specifications are subject to change without notice.*

## OVERVIEW

### Supported Profiles

The services supported by your Card are defined as “Profiles”. Available Profiles include:

- Generic Access
- Service Discovery
- Serial Port
- LAN Access
- Dial-Up Networking
- Object Exchange
- File Transfer
- Synchronization
- Fax
- Personal Area Network
- Hardcopy Cable Replacement
- HID

## OVERVIEW

### Supported Profiles

Your Card gives you the ability to do the following—without cables:

- Transfer files
- Access dial-up networks
- Connect to local area networks
- Perform an ActiveSync® session
- Connect to serial ports
- Exchange PIM data
- Print
- Send or exchange business cards

The basic functions of the *Bluetooth* Neighborhood include:

- Device Discovery
- Service Discovery
- Establishing links with remote devices



## SOFTWARE SETUP

### Software Setup for Windows 98 SE, Me, 2000, and XP

To install the software for the Card, follow the instructions below:

*Note: The installation process for Windows XP may look slightly different from Windows 98 SE, Me, and 2000.*

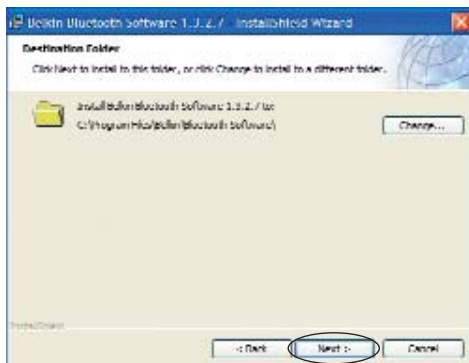
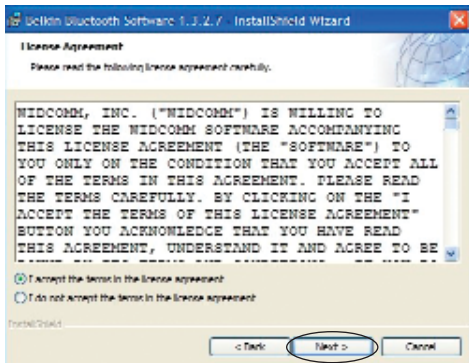
**Note: Do not insert the Card into the PCMCIA Type II slot prior to installation.**

1. Insert the software installation CD-ROM for the *Bluetooth* PC Adapter Card into the PC's CD-ROM drive.
2. The "Software InstallShield Wizard" window appears. Click on "Next" to begin the installation process.



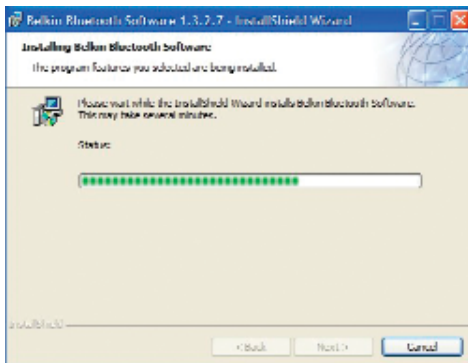
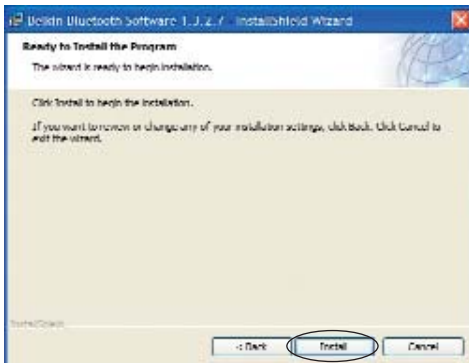
## SOFTWARE SETUP

3. Choose “I accept the terms in the license agreement” to accept the license agreement. Click on “Next” to continue.
4. Specify the location where the software files will be installed on your hard drive. It is recommended that you install the software in the default directory “C:\Program Files\belkin\Bluetooth\Software\”. Click on “Next” to continue.



## SOFTWARE SETUP

5. Confirm that the device software is ready to be installed and click on “Install”.
6. The InstallShield Wizard will begin to install the *Bluetooth* software. This may take several minutes.

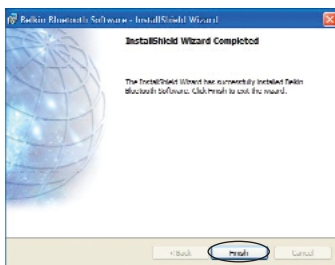


## SOFTWARE SETUP

7. During the installation process, you may be prompted to insert your Card. If your Card is not plugged into your computer at this time, you may insert it into an available PCMCIA Type II-compliant slot on your notebook, then click “OK” to continue. Click on “Cancel” to continue installation without the Card inserted. Refer to the “Hardware Setup” section of this User Manual for instructions for installing the hardware.

*Note: If at any time during the installation process you receive a “Driver Signature Notice”, click “OK” to continue the installation process.*

8. Confirm the completion of the software installation; click “Finish” and restart the system if prompted to do so.



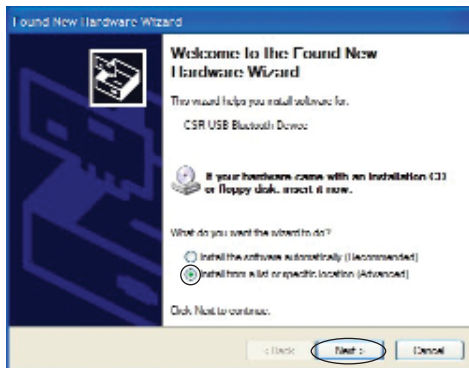
## HARDWARE SETUP

### Hardware Setup for Windows 98 SE, Me, 2000, and XP

Follow these instructions to install your Card on your PC:

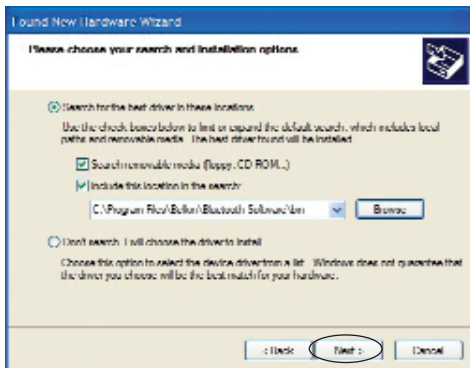
*Note: Your Card is sensitive to static electricity, which can damage its delicate electrical components. To protect your device, always touch the metal chassis of your computer before handling the Card. This will ground any potential electrostatic discharge. Avoid touching the metal connector when handling the Card. Dry weather conditions or walking across carpeted floors may cause you to acquire an electrostatic charge.*

1. Insert the Card directly in an available PCMCIA Type II slot on your notebook computer. Your system should register a new device found.
2. Choose “Install from a list or specific location”; then click “Next”.



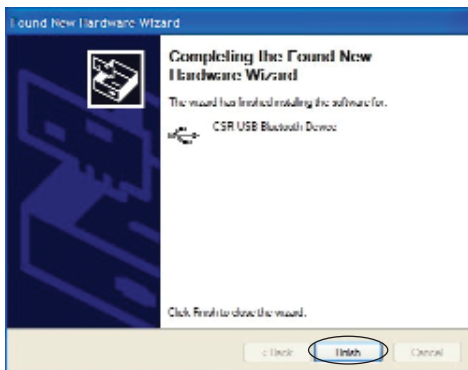
## HARDWARE SETUP

3. Browse for the location of the device driver “C:\Program Files\Belkin\Bluetooth\Software\bin\” then click “Next”.
4. If you receive the following “Hardware Installation Notice”, click on “Continue Anyway” to continue with the installation process.



## HARDWARE SETUP

5. A window will appear that confirms the completion of the hardware installation; click on “Finish” to complete the installation process.



## INITIAL CONFIGURATION WIZARD

### Configuring your Computer for Windows 98 SE, Me, 2000, and XP

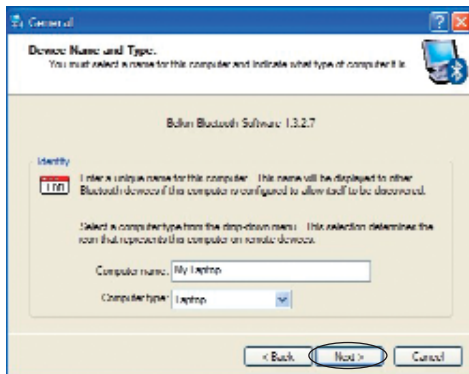
1. Once the installation process is complete, you will be prompted by the “Initial *Bluetooth* Configuration Wizard”. This Wizard will guide you through the initial setup of your Card. Please follow the Wizard as prompted.
2. Name your computer with a name you are likely to remember. This name will be made available when your computer is discovered by other *Bluetooth* devices.





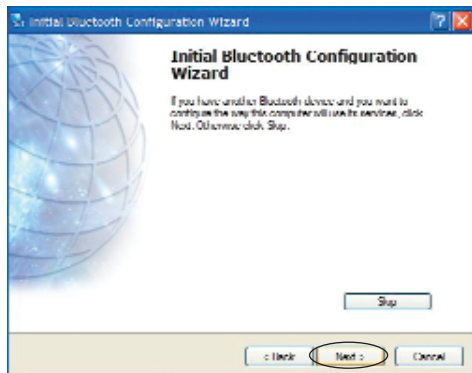
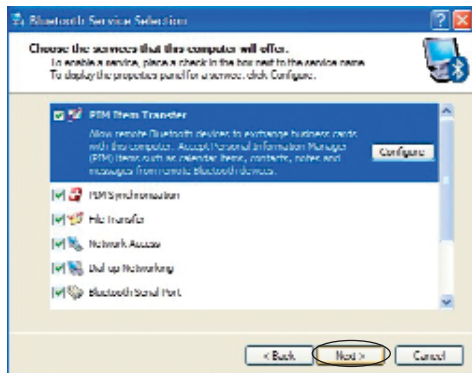
## INITIAL CONFIGURATION WIZARD

3. Choose the type of computer you have installed the Card into from the drop-down menu and click "Next".
4. Continue the Wizard to configure the *Bluetooth* services that this computer will make available of other *Bluetooth* devices to use. Click "Next".



## INITIAL CONFIGURATION WIZARD

5. Choose the *Bluetooth* services your computer will offer and click “Next”. The most common service for your computer type will be checked by default.
6. If you have another *Bluetooth* device and you want to configure the way this computer will use its services, click “Next”. Otherwise click “Skip”.



## UNINSTALLING THE SOFTWARE

### Uninstalling the Software for Windows 98 SE, Me, 2000, and XP

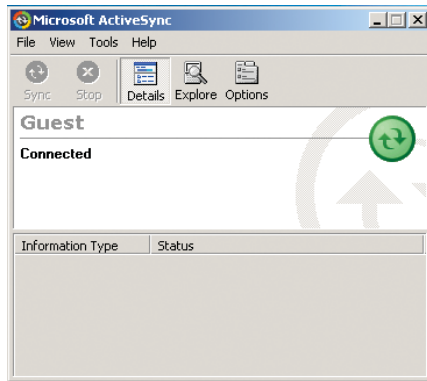
Follow these instructions to uninstall your Card on your PC:

1. Insert the *Bluetooth* PC Adapter Card CD-ROM included with your Card.
2. This “InstallShield Wizard” should automatically load. If it does not load, explore the CD and run the “Setup.exe” file.
3. The “InstallShield” window should now appear. Click “Next” to continue with the uninstall process.

## INSTALLING THE ADAPTER CARD AND SOFTWARE

To install the *Bluetooth* software required to use your Adapter Card on a Pocket PC, follow the instructions below.

1. Remove any accessories from your Pocket PC.
2. Place the Pocket PC in its cradle and create an ActiveSync connection to your desktop or notebook computer, as you would normally do.



## INSTALLING THE ADAPTER CARD AND SOFTWARE

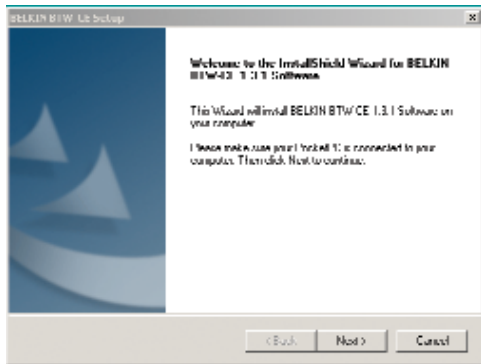
3. Insert the Adapter Card installation CD-ROM into the CD-ROM drive of your desktop or notebook computer.
4. Insert the Adapter Card into your Pocket PC's CompactFlash Type I slot.



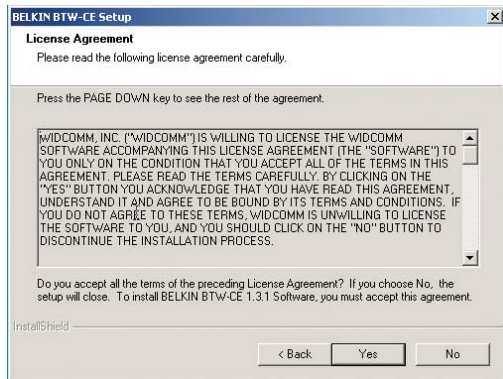
5. From the Windows "Start" menu on your base computer, select "Run", and then type in "x:\PPC\Setup.exe" (where x equals the letter of the CD-ROM drive), then click "OK".

## INSTALLING THE ADAPTER CARD AND SOFTWARE

6. Click “Next” to continue.

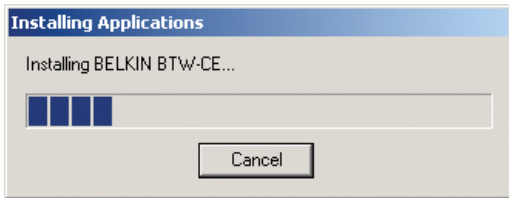
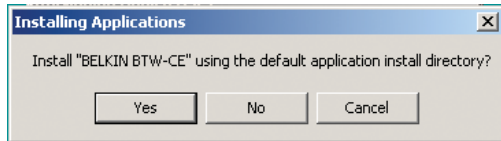
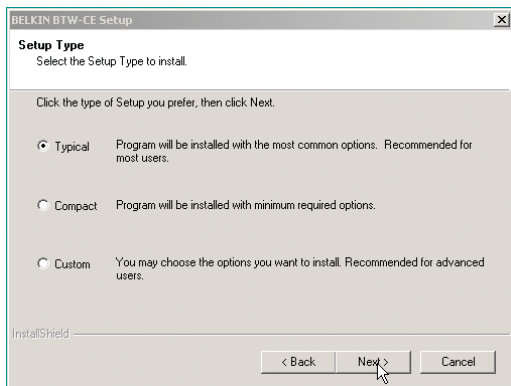


7. Click on “Yes” to accept the license agreement.



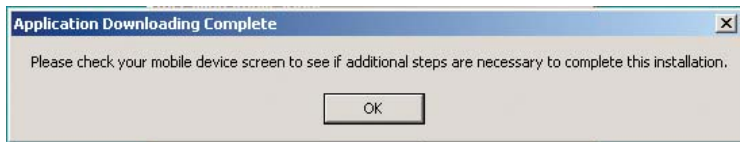
## INSTALLING THE ADAPTER CARD AND SOFTWARE

8. Select the setup type labeled “Typical” and click on “Next” to begin installing the software onto your Pocket PC device.
9. Click on “Yes” to install the software application into the default directory.

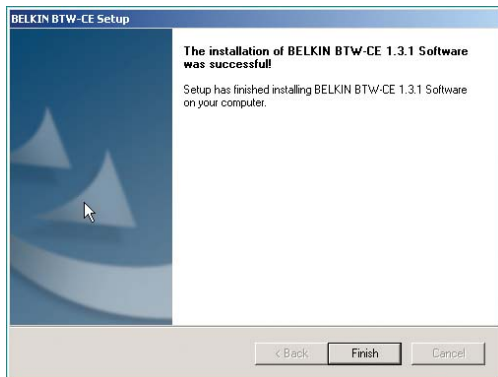


## INSTALLING THE ADAPTER CARD AND SOFTWARE

10. Check your mobile device screen to see if additional steps are necessary to complete the installation. Then click "OK".



11. Click "Finish" to complete the installation process.





## INSTALLING THE ADAPTER CARD AND SOFTWARE

***Note: Ensure that your desktop or notebook computer and your mobile device have completed all operations before exiting the setup.***

After installing the software, remove the Pocket PC from its cradle and conduct a “soft” reset. Refer to your Pocket PC user guide for more information about resetting the Pocket PC.

*NOTE: Your Pocket PC must be connected to your desktop (via ActiveSync) during the installation. This is required for the installation process to properly update the Pocket PC. Should you re-install Bluetooth Manager 1.3.0, you must execute the full installation procedure (i.e. run Setup.exe) instead of reinstalling Bluetooth Manager from ActiveSync (via the Add/Remove Programs option).*

## INSTALLING THE ADAPTER CARD AND SOFTWARE

### On the Pocket PC:

A Welcome screen will be shown with basic instructions to use the *Bluetooth* Manager. Select “Add a shortcut in the Start menu” in order to have access to the *Bluetooth* Manager from the Start menu (otherwise, the Bluetooth Manager will be accessible from “Start > Programs”).

*NOTE: A soft reset leaves installed applications and stored data intact, and simply restarts the device. A hard reset deletes ALL downloaded applications on the handheld. See the Pocket PC’s documentation for additional information.*



## UNINSTALL BLUETOOTH MANAGER

If you have a version of *Bluetooth* Manager prior to version 1.2.0, it must be uninstalled before installing version 1.2.0 or later. For versions 1.2.0 and later, this step is not necessary.

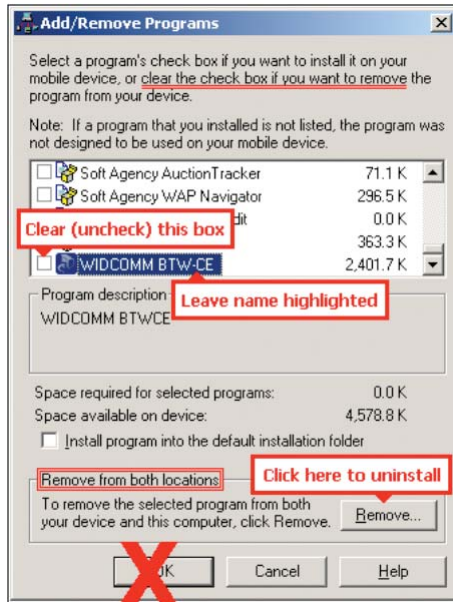
To uninstall *Bluetooth* Manager on the Pocket PC:

1. Connect the handheld computer, via its cradle and ActiveSync, to the desktop computer.
2. On the desktop computer, in the system tray, double-click the ActiveSync icon.
3. From the ActiveSync Tools menu, click "Add/Remove Programs..."
4. In the list of applications installed on the handheld computer, clear "BELKIN BTW CE". Verify that Belkin *Bluetooth* Manager is still highlighted.
5. Click the "Remove" button (DO NOT click the "OK" button).

## UNINSTALL BLUETOOTH MANAGER

- Click "OK" to acknowledge the Remove Application notification.

Any prior version of *Bluetooth* Manager will be uninstalled on both the handheld and desktop computers (follow any additional on-screen instructions that may appear on the desktop computer to complete the uninstall process).



## GLOSSARY

<b>Authentication</b>	Security feature that requires users to verify a numeric password before exchanging data.
<b>Authorization</b>	Security feature that requires user approval before another user is allowed to share data.
<b><i>Bluetooth</i> Neighborhood</b>	A collection of <i>Bluetooth</i> devices.
<b>Bonded Device</b>	Recognized by your device so as not to require authentication or authorization.
<b>Device</b>	Device enabled with <i>Bluetooth</i> technology.
<b>Device Address</b>	Unique electronic address of a <i>Bluetooth</i> device.
<b>Device Discovery</b>	The location and recognition of one <i>Bluetooth</i> device by another.
<b>Device Group</b>	Compilation of several <i>Bluetooth</i> devices into a group, normally to conduct related tasks.

## GLOSSARY

**Device Name**

Name that a *Bluetooth* device provides when discovered by another device.

**Service Discovery**

Determines which applications other devices have in common with yours.

## INFORMATION

### DECLARATION OF CONFORMITY WITH FCC RULES FOR ELECTROMAGNETIC COMPATIBILITY

We, Belkin Corporation, of 501 West Walnut Street, Compton, CA 90220, declare under our sole responsibility that the product,

F8T020

to which this declaration relates, complies with Part 15 of the FCC Rules. Operation is subject to the following two conditions: (1) this device may not cause harmful interference, and (2) this device must accept any interference received, including interference that may cause undesired operation.

#### **Caution: Exposure to Radio Frequency Radiation.**

The radiated output power of this device is far below the FCC radio frequency exposure limits. Nevertheless, the device shall be used in such manner that the potential for human contact normal operation is minimized.

When connecting an external antenna to the device, the antenna shall be placed in such a manner to minimize the potential for human contact during normal operation. In order to avoid the possibility of exceeding the FCC radio frequency exposure limits, human proximity to the antenna shall not be less than 20cm (8 inches) during normal operation.

#### **Federal Communications Commission Notice**

This equipment has been tested and found to comply with the limits for a Class B digital device, pursuant to Part 15 of the FCC Rules. These limits are designed to provide reasonable protection against harmful interference in a residential installation.

## INFORMATION

This equipment generates, uses, and can radiate radio frequency energy. If not installed and used in accordance with the instructions, it may cause harmful interference to radio or television reception, which can be determined by turning the equipment off and on, the user is encouraged to try and correct the interference by one or more of the following measures:

- Reorient or relocate the receiving antenna.
- Increase the distance between the equipment and the receiver.
- Connect the equipment to an outlet on a circuit different from that to which the receiver is connected.
- Consult the dealer or an experienced radio/TV technician for help.

### Modifications

The FCC requires the user to be notified that any changes or modifications to this device that are not expressly approved by Belkin Corporation may void the users authority to operate the equipment.

### Canada-Industry Canada (IC)

The wireless radio of this device complies with RSS 139 & RSS 210 Industry Canada. This Class B digital complies with Canadian ICES-003.

Cet appareil numérique de la classe B conforme á la norme NMB-003 du Canada.

### Europe-European Union Notice

Radio products with the CE alert marking comply with the R&TTE Directive (1995/5/EC) issued by the Commission of the European Community.





## INFORMATION

Compliance with this directive implies conformity to the following European Norms (in brackets are the equivalent international standards).



- EN 60950 (IEC60950) – Product Safety
- EN 300 328 Technical requirement for radio equipment
- ETS 300 826 General EMC requirements for radio equipment.

To determine the type of transmitter, check the identification label on your Belkin product.

Products with the CE marking comply with the EMC Directive (89/336/EEC) and the Low Voltage Directive (72/23/EEC) issued by the Commission of the European Community. Compliance with these directives implies conformity to the following European Norms (in brackets are the equivalent international standards).



- EN 55022 (CISPR 22) – Electromagnetic Interference
- EN 55024 (IEC61000-4-2,3,4,5,6,8,11)- Electromagnetic Immunity
- EN 61000-3-2 (IEC61000-3-2) - Power Line Harmonics
- EN 61000-3-3 (IEC610000) – Power Line Flicker
- EN 60950 (IEC60950) – Product Safety

Products that contain the radio transmitter are labeled with the CE alert marking and may also carry the CE logo.

## INFORMATION

### Belkin Corporation Limited Two-Year Product Warranty

Belkin Corporation warrants this product against defects in materials and workmanship for its warranty period. If a defect is discovered, Belkin will, at its option, repair or replace the product at no charge provided it is returned during the warranty period, with transportation charges prepaid, to the authorized Belkin dealer from whom you purchased the product. Proof of purchase may be required.

This warranty does not apply if the product has been damaged by accident, abuse, misuse, or misapplication; if the product has been modified without the written permission of Belkin; or if any Belkin serial number has been removed or defaced.

THE WARRANTY AND REMEDIES SET FORTH ABOVE ARE EXCLUSIVE IN LIEU OF ALL OTHERS, WHETHER ORAL OR WRITTEN, EXPRESSED OR IMPLIED. BELKIN SPECIFICALLY DISCLAIMS ANY AND ALL IMPLIED WARRANTIES, INCLUDING, WITHOUT LIMITATION, WARRANTIES OF MERCHANTABILITY AND FITNESS FOR A PARTICULAR PURPOSE.

No Belkin dealer, agent, or employee is authorized to make any modification, extension, or addition to this warranty.

BELKIN IS NOT RESPONSIBLE FOR SPECIAL, INCIDENTAL, OR CONSEQUENTIAL DAMAGES RESULTING FROM ANY BREACH OF WARRANTY, OR UNDER ANY OTHER LEGAL THEORY, INCLUDING BUT NOT LIMITED TO, LOST PROFITS, DOWNTIME, GOODWILL, DAMAGE TO OR REPROGRAMMING OR REPRODUCING ANY PROGRAM OR DATA STORED IN, OR USED WITH, BELKIN PRODUCTS.

Some states do not allow the exclusion or limitation of incidental or consequential damages or exclusions of implied warranties, so the above limitations of exclusions may not apply to you. This warranty gives you specific legal rights, and you may also have other rights that vary from state to state.



[belkin.com](http://belkin.com)

**Belkin Corporation**

501 West Walnut Street  
Compton • CA • 90220 • USA  
Tel: 310.898.1100  
Fax: 310.898.1111

**Belkin Components, Ltd.**

Express Business Park • Shipton Way  
Rushden • NN10 6GL • United Kingdom  
Tel: +44 (0) 1933 35 2000  
Fax: +44 (0) 1933 31 2000

**Belkin, Ltd.**

7 Bowen Crescent • West Gosford  
NSW 2250 • Australia  
Tel: +61 (0) 2 4372 8600  
Fax: +61 (0) 2 4372 8603

**Belkin Tech Support**

US: 310.898.1100 ext. 2263  
800.223.5546 ext. 2263  
Europe: 00 800 223 55 460  
Australia: 1800 666 040

**P74315**

© 2003 Belkin Corporation. All rights reserved. All trade names are registered trademarks of respective manufacturers listed. The *Bluetooth* name and the *Bluetooth* trademarks are owned by *Bluetooth SIG, Inc.*, and are used by Belkin Corporation under license.

## Free Manuals Download Website

<http://myh66.com>

<http://usermanuals.us>

<http://www.somanuals.com>

<http://www.4manuals.cc>

<http://www.manual-lib.com>

<http://www.404manual.com>

<http://www.luxmanual.com>

<http://aubethermostatmanual.com>

Golf course search by state

<http://golfingnear.com>

Email search by domain

<http://emailbydomain.com>

Auto manuals search

<http://auto.somanuals.com>

TV manuals search

<http://tv.somanuals.com>