

TARGUS
Essential Accessories for Mobile Computing

Targus Click N Type
for Compaq iPAQ 3800/3900



USER'S GUIDE
Making Your Mobile Life Easier.

TARGUS
Essential Accessories for Mobile Computing

Making Your Mobile Life Easier.

Visit our Web site at: www.targus.com

Features and specifications are subject to change without notice. © 2002 Targus Corp.

400-0090-001A

BRUSSELS HANNOVER BARCELONA TOKYO MILANO AMSTERDAM SINGAPORE LONDON PARIS NEW YORK LOS ANGELES TORONTO HONG KONG SYDNEY

■ PMS Black
15%

■ PMS Black
100%

Targus Click N Type

Congratulations on your purchase of the Targus Click N Type. The Click N Type is a convenient and ultra-portable keyboard and mouse for your PDA.

With the Click N Type you can:

- Enter text directly into your PDA.
- Use the 8-way navigation button to simulate mouse movement.
- Define and use the function keys to quickly execute commands and options.
- Take a keyboard and mouse with you whenever you travel with your PDA.

In addition to this user's guide, this package contains the Targus Click N Type and the driver software CD-ROM.

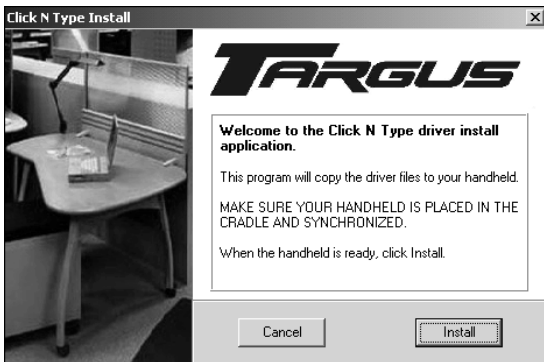
Installing the Driver

To install the driver software for the Click N Type, you need:

- A desktop or notebook computer with the Windows® 95/98/Me/2000/XP or Windows NT® 4.0 operating system
- Microsoft® ActiveSync® 3.1 or higher on your computer (for copying files to your PDA). For the most current version of Microsoft ActiveSync, go to: <http://www.microsoft.com/mobile>
- At least 24K bytes of free memory on your PDA.
 - 1 Connect your PDA to your computer, if it's not already connected, and synchronize to back up your files.
 - 2 Disable any previously installed keyboard software on your PDA.

- 3 Insert the driver software CD-ROM into your computer's CD-ROM drive.
- 4 Click **Start, Run**, then enter D:\Setup.exe (where D: is the path of your CD-ROM drive) and then click **OK**.

The Click N Type Installation screen appears.



PDA Mouse Click N Type Installation screen

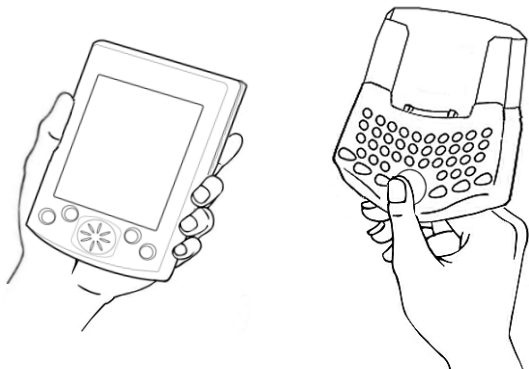
- 5 Click **Install**.
- 6 Follow the on-screen instructions to complete installation.
- 7 Synchronize to copy the driver to your PDA.

After synchronization, the Click N Type icon appears in the Applications screen on your PDA. You can now connect the Click N Type to your PDA.

Connecting the Click N Type to Your PDA

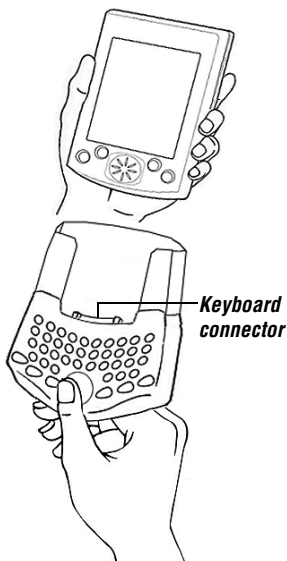
Once you have installed the driver, you can connect the Click N Type to your PDA. To do this:

- 1 Turn off your PDA (if it's turned on).
- 2 Hold your PDA in one hand and the Click N Type in your other hand.



Holding your PDA and the Click N Type

- 3 Align your PDA with the keyboard connector, located at the top of the Click N Type.



Aligning your PDA with the keyboard connector

- 4 Gently slide your PDA into the keyboard connector until you hear a “click.”

When you connect the Click N Type, your PDA automatically turns on and you can begin typing.



CAUTION: Always use the keyboard connector as a guide when connecting and disconnecting your PDA to avoid possible damage to your device or the Click N Type.

Disconnecting the Click N Type

To disconnect the Click N Type from your PDA:

- 1 Turn off your PDA (if it's turned on).
- 2 Press the release button, located on the back of the keyboard, and gently pull your PDA away from the Click N Type, sliding it out of the keyboard connector.



CAUTION: Avoid pressing any keys on the Click N Type when disconnecting it from your PDA, as doing so may cause the key to stop working.

Using the Click N Type



NOTE: The Click N Type does not require batteries. Instead, it runs off of a small amount of power, which it draws directly from your PDA.

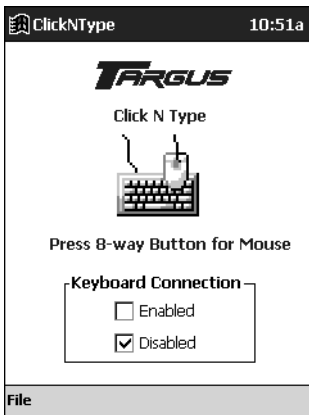
Enabling the Click N Type

After installing the driver and connecting the Click N Type to your PDA, you can enable the keyboard through the main application screen.

To enable the Click N Type:

- 1 Tap **Start**, then **Click N Type**.

The main application screen appears.



Sample main application screen

- 2 Tap on the box next to **Enabled** so that a check mark appears.

You are now ready to customize and use the Click N Type.

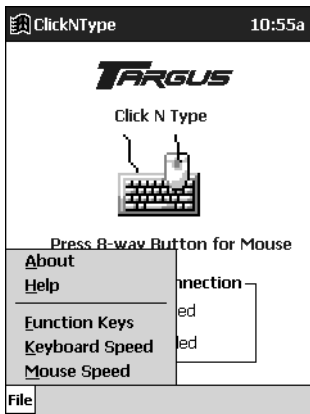
Customizing the Click N Type Options

Once you enable the Click N Type, you can view and customize its options through the File menu on the main application screen.

To customize the Click N Type option:

- 1 Tap **Start**, **Click N Type**, then **File**.

The File menu appears.



Sample File menu

- 2 Select the option you want to view or customize.

The available options are:

- About Shows the software version and copyright
- Help Lists the online Help topics
- Function Keys Defines the programmable function keys
- Keyboard Speed Specifies the keyboard repeat rate settings
- Mouse Speed Specifies the mouse speed settings

About

The About screen in the Click N Type application allows you to view the software version and copyright information.

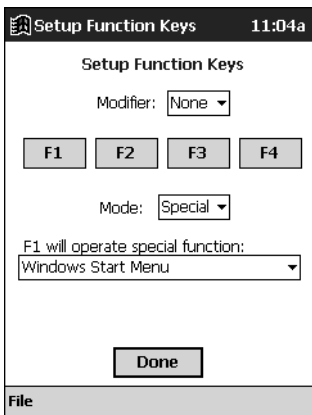
Help

The Help screen in the Click N Type application displays the online help topics.

Find the topic you want to learn more about and select the link to view more information.

Function Keys

The Function Keys screen in the Click N Type application provides twelve user-definable function keys, consisting of keys F1 to F4 with and without a modifier.



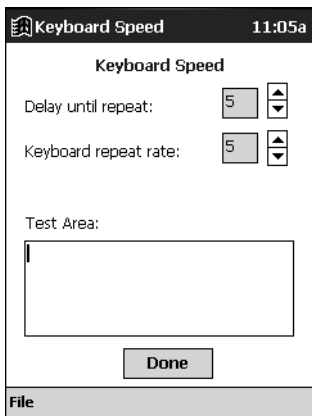
Sample Function Keys screen

To define the function keys:

- 1 Choose a modifier (**Shift** or **Fn**) that you want to assign as a part of the key sequence, or select **None**, from the drop-down menu.
- 2 Tap the function key that you want to assign.
- 3 Select a mode from the drop-down menu. The options are:
 - Run – which allows you to either open a specific application or open an application in association with a specific file.
 - Paste – which allows you to paste text that you type in, or to simulate the Ctrl-V paste function, which pastes the current contents of the clipboard.
 - Special – which allows you to select a pre-programmed function from the drop-down menu. Some of the special functions, such as LR Tap (lower-right tap), simulate stylus taps so that you can access icons on your PDA screen more quickly.
- 4 Enter any details in the box provided, such as an application or file name or specific text, or select a special feature from the drop-down menu.
- 5 Repeat steps 1 through 4 to define additional function keys.
- 6 To save your settings, close the window by tapping **Done** on your PDA screen.

Keyboard Speed

The Keyboard Speed screen in the Click N Type application allows you to regulate the keystroke repeat function.

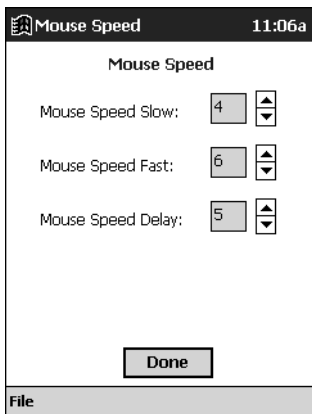


Sample Keyboard Speed screen

- **Delay until repeat:** allows you to set the length of time before a letter, number or other character begins to repeat when you press and hold a key. The settings range is 1 (short) to 10 (long).
- **Keyboard repeat rate:** allows you to set the speed at which a letter, number or other character repeats when you press and hold a key. The settings range is 1 (slow) to 10 (fast).
- **Test Area:** allows you to test the delay and repeat rate by holding down a letter or number key on the Click N Type. The character repeats according to the settings you have chosen. Change and test these settings until you achieve the desired outcome.

Mouse Speed

The Mouse Speed screen in the Click N Type application allows you to regulate the rate at which the mouse (8-way navigation button) moves the cursor across the screen.



Sample Keyboard Speed screen

- **Mouse Speed Slow:** allows you to set the speed at which the cursor normally moves. The settings range is 1 (slow) to 10 (fast).
- **Mouse Speed Fast:** allows you to set the higher speed at which the cursor moves, after the speed delay, when you press and hold down the mouse button. The settings range is 1 (slow) to 10 (fast), but the corresponding speeds are faster than for Mouse Speed Slow.
- **Mouse Speed Delay:** allows you to set the length of time before the cursor changes from slow speed to fast speed when you press and hold down the mouse button. The settings range is 1 (short) to 10 (long).

Using the Keyboard Mouse

With the Click N Type's 8-way navigation button, you can control the cursor's movement and tap items on your PDA's screen — all “stylus-free.”



Click N Type 8-way navigation button

Press the arrows on the navigation button to move the cursor across the PDA's screen. To “tap” an on-screen option, press the checkmark key on the Click N Type. To “tap and hold” an on-screen option, press and hold the checkmark key on the Click N Type.



NOTE: The mouse turns itself off after two seconds of non-operation or when you press any key on the Click N Type.

Typing Keyboard Shortcuts

The following table details the key sequences you can use to access options and additional characters, and to issue commands to your PDA from the Click N Type.

To use these key sequences, hold down the Ctrl, Fn, or Shift key (as indicated) and then tap the second key listed in the table for the desired result.

To access the characters that are imprinted in red, press Fn + <key>.

Keyboard Combinations

| | Key Sequence | Result |
|----|---------------------|--|
| 1 | Shift + any key | Enters uppercase character |
| 2 | Caps | Toggles between all upper or lowercase characters |
| 3 | Fn + any key | Activates the red symbol on a key |
| 4 | Shift + ↑ | Highlights line of text above cursor |
| 5 | Shift + ↓ | Highlights line of text below cursor |
| 6 | Shift + → | Highlights character to right of cursor |
| 7 | Shift + ← | Highlights character to left of cursor |
| 8 | Fn + Mouse | Emulates the left/right and up/down arrows on a keyboard |
| 9 | Mouse | Moves the cursor in the same manor as a regular mouse |
| 10 | Ctrl + X | Cuts selected text |
| 11 | Ctrl + C | Copies selected text |
| 12 | Ctrl + V | Pastes cut or copied text |
| 13 | Ctrl + A | Selects all text |
| 14 | Ctrl + Z | Undoes last command |
| 15 | Fn + Backspace | Del |
| 16 | Tab | Tab |
| 17 | Ctrl + Q | Close Program |
| 18 | Ctrl + N | New |

Troubleshooting

What should I do when I type on the keyboard and nothing happens?

- Check that your PDA is charged.
- Make sure that your PDA is firmly connected to the Click N Type.
- Verify that the keyboard driver is installed on your PDA.
- Remove the keyboard driver and then reinstall it. To do this:
 - 1 Tap **Start**, then select **Programs**.
 - 2 Tap **File Explore**, then select **My Device**.
 - 3 Tap **Windows, Start Menu**, then tap and hold **Click N Type** and select **Delete** from the drop-down menu.
 - 4 Tap **Yes** to remove the keyboard software, or **No** to cancel the operation.
 - 5 Install the driver software, following the instructions in “Installing the Driver” on page 3.

Does the Targus Click N Type require batteries?

No — the keyboard uses only a small amount of power, which it draws directly from your PDA. Alternately, you can charge your PDA while using the Click N Type by connecting an AC adapter to the AC adapter port, located at the bottom of the keyboard.

What should I do if my PDA screen goes blank while I'm typing? (For Pocket PC 2002 users only)

To keep your PDA screen from turning off during use, turn off the backlight option. To do this:

- 1 From the Settings Menu, select **Power**.
- 2 Tap **Adjust backlight settings**.
- 3 Select **Turn off backlight** so that the check mark disappears.

Technical Support

In the unlikely event that you encounter a problem with your Targus accessory, please contact our technical support team at:

Email: techsupport@targus.com

Internet: <http://www.targus.com/support.asp>

Our knowledgeable staff is also available to answer your questions through one of the following telephone numbers.

US

Monday through Friday, 8:00 a.m. (08:00) to 8:00 p.m. (20:00)

Eastern time: 800-283-6325

Canada

Monday through Friday, 9:00 a.m. (09:00) to 5:00 p.m. (17:00)

Eastern time: 888-827-4877

Europe

Belgium +32 0 02-717-2451

Denmark +45 0 35-25-8751

France +33 0 1-64-53-9151

Germany +49 0 21-16-579-1151

Italy +39 0 24-827-1151

Netherlands +31 0 53-484-9470

Spain +34 0 91-745-6221

Sweden +46 0 8-751-4058

Switzerland +41 0 1-212-0007

United Kingdom +44 0 20-7744-0330

Eastern Europe & others +31 0 53-484-9479

Product Registration

For more efficient customer service and to activate the product's warranty, Targus recommends that you register your Targus accessory shortly after purchasing it.

To register your Targus accessory, go to:

<http://www.targus.com/registration.asp>

You will need to provide your full name, email address, phone number, and company information (if applicable).

Warranty

Targus warrants this product to be free from defects in materials and workmanship for one year. If your Targus Targus Click N Type is found to be defective within that time, we will promptly repair or replace it. This warranty does not cover accidental damage, wear and tear, or consequential or incidental loss. Under no conditions is Targus liable for loss of, or damage to, a computer; nor loss of, or damage to, programs, records, or data; nor any consequential or incidental damages, even if Targus has been informed of their possibility. This warranty does not affect your statutory rights.

Warranty Registration at:

<http://www.targus.com/registration.asp>

Regulatory Compliance

This device complies with Part 15 of the FCC Rules. Operation is subject to the following two conditions: (1) This device may not cause harmful interference, and (2) This device must accept any interference received, including interference that may cause undesired operation.

FCC Statement

Tested to Comply

This equipment has been tested and found to comply with the limits of a Class B digital device, pursuant to Part 15 of the FCC Rules. These limits are designed to provide reasonable protection against harmful interference in a residential installation. This equipment generates, uses, and can radiate radio frequency energy and if not installed and used in accordance with the instructions, may cause harmful interference to radio communications. However, there is no guarantee that interference will not occur in a particular installation.

If this equipment does cause harmful interference to radio or television reception, which can be determined by turning the equipment off and on, the user is encouraged to try to correct the interference by one or more of the following measures:

- Reorient or relocate the receiving antenna
- Increase the separation between the equipment and receiver
- Move the computer away from the receiver
- Connect the equipment into an outlet on a circuit different from that to which the receiver is connected.

Microsoft, Windows and ActiveSync are registered trademarks of Microsoft Corporation. All other trademarks are the property of their respective owners.

Free Manuals Download Website

<http://myh66.com>

<http://usermanuals.us>

<http://www.somanuals.com>

<http://www.4manuals.cc>

<http://www.manual-lib.com>

<http://www.404manual.com>

<http://www.luxmanual.com>

<http://aubethermostatmanual.com>

Golf course search by state

<http://golfingnear.com>

Email search by domain

<http://emailbydomain.com>

Auto manuals search

<http://auto.somanuals.com>

TV manuals search

<http://tv.somanuals.com>