

Pioneer

ビデオカード
VIDEO CARD
CARTE VIDEO
VIDEOKARTE

PDA-5002

取扱説明書
Operating Instructions
Mode d'emploi
Bedienungsanleitung

Safety Precautions	i
Before Proceeding	2
How to Use This Manual	2
Checking Supplied Accessories	3
Part Names and Functions	4
Connection Panel	4
Installation and Connections	6
Installing the Video Card	6
Input Connectors on the Plasma Display with Video Card	7
Connection to INPUT1 and INPUT2	7
Connection to INPUT3	10
Connection to INPUT4	10
Connection to INPUT5	11
About DTV set Top Box Connection	11
Audio Connections	12
How to Route Cables.....	13
Setting Up the System	14
Setup after Connection	14
Operations	16
Selecting an Input Source	16
Screen Size Selection.....	18
Partial Image Enlargement (POINT ZOOM)	19
Automatic Power OFF	20
Display Panel Adjustments	21
Adjusting the Picture Quality	21
Adjusting the Image Position and Clock (Automatic Adjustment)	22
Manual Adjustment of Screen Position and Clock	22
Other Operations	24
Rewriting the Input Display (INPUT LABEL)	24
Changing the Color Temperature (COLOR TEMP)	25
Reducing Video Noise (DIGITAL NR)	25
Setting the PureCinema Mode	26
Setting the Regional TV System Format	26
Viewing a Fast Moving Picture (3D Y/C MODE)	27
Viewing in a Bright Location (HIGH CONTRAST)	28
AUTO FUNCTION	29
Audio Output (AUDIO OUT)	30
Additional Information	31
Specifications	31
Supplement 1	32
Supplement 2	32
Supplement 3	33
Explanation of Terms	33

How to Use This Manual

This manual has been written to allow easy understanding of setup and operating procedures when the video card PDA-5002 is installed in the plasma display.

Remove the video card from its packaging and confirm that all accessory parts are present. While installing and setting up the video card, consult the section "Part Names and Functions" on page 4 of this manual and in the plasma display's Operating Instructions to familiarize yourself with the parts of the respective devices. Since this manual makes frequent reference to the names of operating buttons on the plasma display, use the display's Operating Instructions to familiarize yourself with the controls on the display and the remote control unit.

The section "Installation and Connections" on page 6 includes information necessary for installing the video card on the plasma display, together with instructions regarding connections to various other components.

The section "Setting Up the System" starting on page 14 covers the necessary on-screen menu settings to establish correct linkage between the plasma display and connected components. Depending on the connections made, this section may or not be necessary.

The remainder of the sections in this manual is dedicated to the basic operations associated with selecting a source component up to the more complex operations associated with adjusting the plasma display picture to match the requirements of specific components and personal preferences.

About operations in this manual

Operations in this manual are outlined in step by step numbered procedures. Most of the procedures are written in reference to the remote control unit unless the button or control is only present on the main unit. However, if a button or control on the main unit has the same or similar name as that on the remote control unit, that button can be used when performing operations.

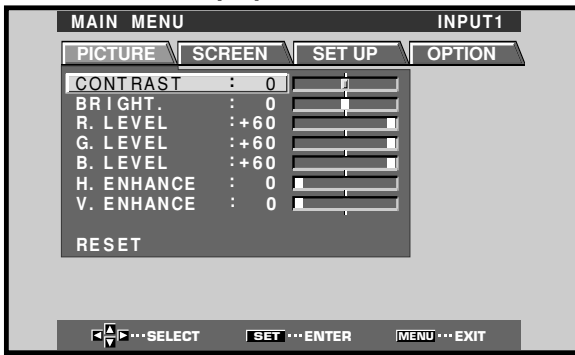
The following example is an actual operation that shows how one might set the horizontal and vertical positions of the screen. The screens shown at each step are provided as a visual guide to confirm that the procedure is proceeding as it should. Please familiarize yourself with this process before continuing on with the rest of this manual.

Note

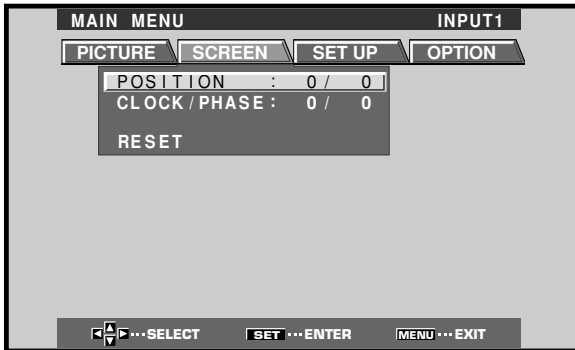
The screen displays depicted in this manual represent typical display examples.

The actual items and contents seen in screen displays may vary depending on input source and specific settings.

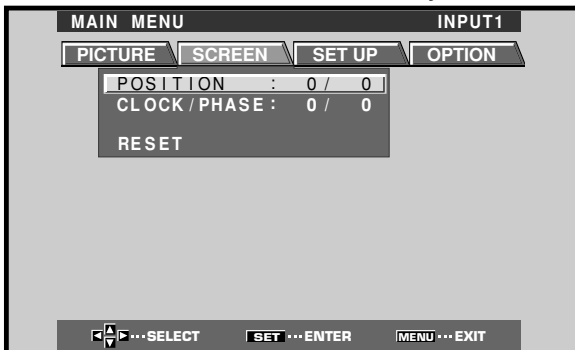
1 Press **MENU** to display the menu screen.



2 Press **▶** to select **SCREEN**.



3 Press **▲/▼** to select the item to be adjusted.



4 Press **SET** to display the adjustment screen for the selected item.



5 Press **▲/▼/◀/▶** to adjust the value.

Checking Supplied Accessories

Check that the following accessories were supplied.

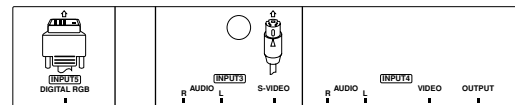
① **Label for remote control unit**



② **BNC/Pin conversion adaptor**



③ **Connector indicator label**

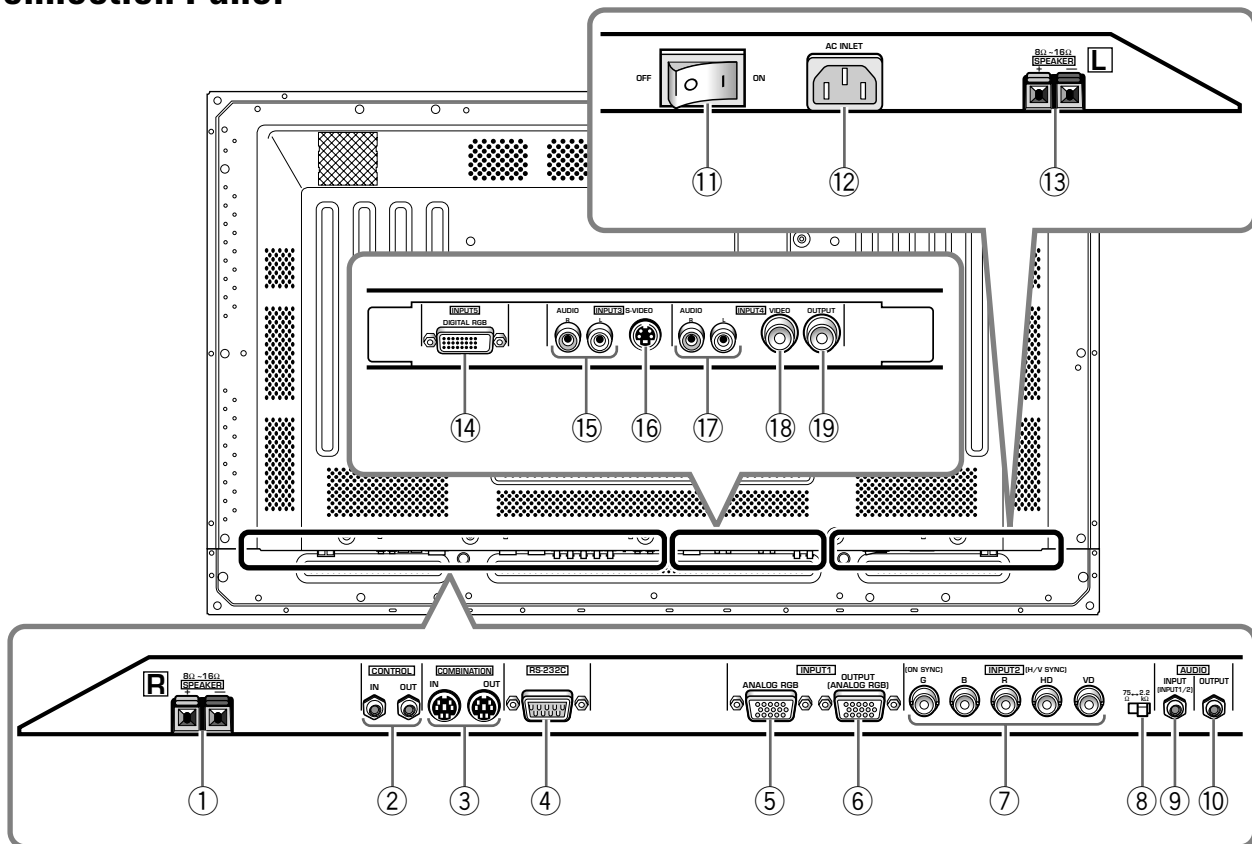


④ **Screws (×2)**
(Accessory screws for installing video card)




- Operating Instructions
- Warranty

Connection Panel



Plasma Display Section

The plasma display is provided with 2 video input connectors, 1 video output connector, audio input/output jacks and speaker terminals.


There are also CONTROL IN/OUT jacks for connection of PIONEER components with the  mark.

When this video card is installed on a plasma display, an additional three sets of video input connectors are provided (total five), together with one additional video output connector (total two). See the pages noted in parentheses () or the plasma display's Operating Instructions for details regarding connections to the various jacks and connectors.

① SPEAKER (R) terminal

For connection of an external right speaker.
Connect a speaker whose impedance is 8-16 Ω.

② CONTROL IN/OUT (monaural mini jacks)

For connection of PIONEER components that bear the  mark. Making CONTROL connection enables control of the plasma display as a component in a system.

③ COMBINATION IN/OUT DO NOT MAKE ANY CONNECTIONS TO THESE TERMINALS.

These terminals are used in the factory setup.

④ RS-232C

DO NOT MAKE ANY CONNECTIONS TO THIS TERMINAL.

This terminal is used in the factory setup.

⑤ INPUT1 (mini D-sub 15 pin)

For connection of components that have RGB or component output jacks such as a personal computer, DVD player, or external RGB decoder. Make sure that the connection made corresponds to the format of the signal output from the connected component (pages 7 to 10).

⑥ OUTPUT (INPUT1) (mini D-sub 15 pin)

Use the OUTPUT (INPUT1) connector to output the video signal to an external monitor or other component.

Note: The video signal will not be output from the OUTPUT (INPUT1) connector when the main power of this display is off or in standby mode. (page 10)

⑦ INPUT2 (BNC jacks)

For connection of components that have RGB or component output jacks such as a personal computer, DVD player, or external RGB decoder. Make sure that the connection made corresponds to the format of the signal output from the connected component (pages 7 to 9).

⑧ Synchronizing signal impedance selector switch

Depending on the connections made at INPUT2, it may be necessary to set this switch to match the output impedance of the connected component's synchronization signal.

When the output impedance of the component's synchronization signal is above 75 Ω , set this switch to the 2.2 k Ω position (page 9).

⑨ AUDIO INPUT (Stereo mini jack)

Use to obtain sound when INPUT1, INPUT2 or INPUT5 is selected.

Connect this jack to the audio output connector of the device connected to the plasma display's INPUT1 or INPUT2, or to the audio output connector of the device connected to the video card's INPUT5 (page 12).

⑩ AUDIO OUTPUT (Stereo mini jack)

Use to output the audio of the selected source component connected to the plasma display to an AV amplifier or similar component (page 12).

⑪ MAIN POWER switch

Use to switch the main power of the plasma display on and off.

⑫ AC INLET

A power cable is furnished with the plasma display; connect one end of the power cable to this connector, and the other end to a standard AC power source.

⑬ SPEAKER (L) terminal

For connection of an external left speaker. Connect a speaker that has an impedance of 8 -16 Ω .

Video Card <PDA-5002> Section

The video card is provided with 3 video input connectors, 1 video output connector, and 2 audio input connectors. Consult the pages noted in parentheses () for details regarding connections to the various jacks and connectors.

⑭ INPUT5 (DVI-D jack)

Use to connect a computer.

Note: This unit does not support the display of copyguard-protected video signals (page 11).

⑮ AUDIO INPUT3 (RCA Pin jacks)

Use to obtain sound when INPUT3 is selected.

Connect these jacks to the audio output connectors of components connected to the video card's INPUT3 (page 12).

Note: The left audio channel (L) jack is not compatible with monaural input sources.

⑯ INPUT3 (S-video jack)

For connection of components that have an S-video output jack such as a video deck, video camera, laser disc player, or DVD player. (page 10)

⑰ AUDIO INPUT4 (RCA Pin jacks)

Use to obtain sound when INPUT4 is selected.

Connect these jacks to the audio output connectors of components connected to the video card's INPUT4 (page 12).

Note: The left audio channel (L) jack is not compatible with monaural input sources.

⑱ INPUT4 (BNC jack)

For connection of components that have a composite video output jack such as a video deck, video camera, laser disc player, or DVD player (page 10).

⑲ OUTPUT (INPUT4) (BNC jack)

Use the OUTPUT (INPUT4) jack to output the video signal to an external monitor or other component.

Note: The video signal will not be output from the OUTPUT (INPUT4) jack when the main power of this display is off or in standby mode (page 10).

Installation and Connections

Installing the Video Card

TO USERS:

This component is sold with the understanding that it will be installed by a specialist possessing appropriate technical knowledge and ability.

TO SALES AGENTS:

Installation instructions are noted below. When installing the unit, if a screw or other object should drop inside the plasma display, immediately consult your nearest Pioneer Service Center. Continuing operation may result in malfunction.

This device has been designed for installation on the Pioneer Plasma Display PDP-503CMX/PDP-503MXE. Installation procedures are as follows:

Confirm the following before installing this video card:

- Disconnect the plasma display from computer or other components.
- Disconnect the plasma display's power cord from its outlet.

Installation Notes:

- When opening the installation cover, take care not to drop screws or other objects in the opening. Objects dropped inside the display may cause damage or malfunction.
- When installing the video card, if the plasma display is laid with its screen side facing down, the work surface should be flat and level, and either the packing material, a blanket, or other soft material should be spread on the work surface first to protect the screen. Take care to prevent scratches or other damage to the unit from tools or other objects. Never rest the display on a surface in such a way that weight or pressure is placed only on the screen surface.
- This video card has been designed for exclusive use with the Pioneer Plasma Display PDP-503CMX/PDP-503MXE. Do not attempt unauthorized modifications or alterations since malfunction or damage may result.
- Take care not to modify or damage the card's internal devices in any way.
- Before installation, take precautions to eliminate static electricity on your body. Do not touch the card's circuitry or devices.
- This device has not been designed to allow reinstallation or removal; after the card has once been installed on the plasma display, do not attempt to remove it since damage may result.

Installation

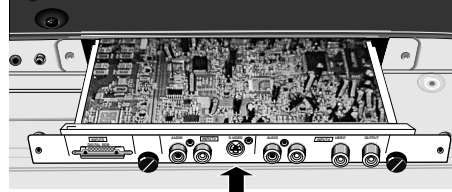
- 1 Remove the protective cover over the video card slot on the plasma display's terminal panel.**



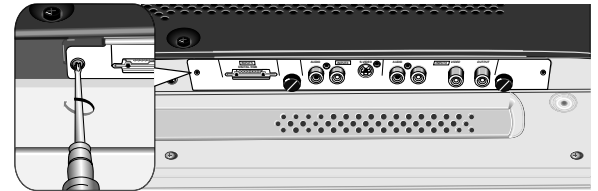
- 2 Insert the video card gently and evenly in alignment with the two rails (black) visible inside the installation port.**

Note

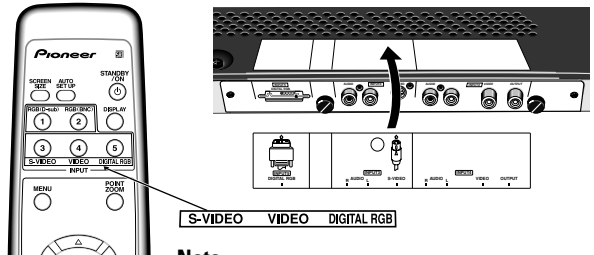
Be very careful when inserting the card. Insert straight! The card or display may be damaged if the card is inserted crooked or with excessive force.



- 3 After inserting the video card all the way into the slot, confirm that it is seated securely, then use the screws removed in step 1 to secure the card in place.**



- 4 Affix the accessory connector indicator label to the plasma display, and affix the remote control unit label to the remote control unit furnished with the plasma display.**

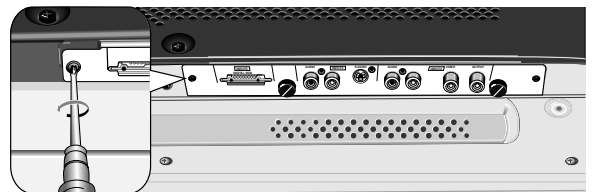


Note

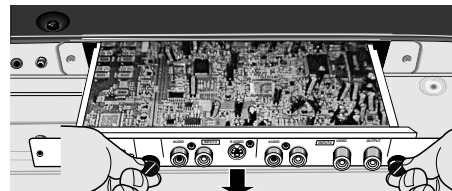
Use a soft cloth to gently wipe any dust from the surface before affixing the label.

Video Card Removal (In principle, removal of the video card should not be attempted).

- 1 Remove the two screws holding the video card.**



- 2 Holding the inside tabs, pull the video card out straight.**



Input Connectors on the Plasma Display with Video Card

Consult the following chart when making connections to a plasma display equipped with this video card (pages 7 to 12).

Connected component and signals \ Input Connector	INPUT 1*1	INPUT 2*1	INPUT 3	INPUT 4	INPUT 5
AV component					
Analog RGB	○	○			
Component video	○	○			
S video			○		
Composite video				○	
Personal computer (PC)					
Analog RGB	○*2	○			
S video			○*3		
Composite video				○*3	
Digital RGB					○*4

- *1 Although INPUT1/INPUT2 are compatible with various kinds of signals, setup using the on-screen menu is necessary after connections are made in order match the characteristics of the source component (pages 14 and 15).
- *2 INPUT1 is compatible with Microsoft's Plug & Play (VESA DDC 1/2B).
- *3 Depending on the video output board of the computer, this type of connection may not be possible.
- *4 INPUT5 is compatible with Microsoft's Plug & Play (VESA DDC 2B).

Connection to INPUT1 and INPUT2

Various components can be connected to the INPUT1 and INPUT2 jacks. After connections are made, on-screen setup is necessary to match the characteristics of the connected component. Please see pages 14 and 15 for on-screen setup after connection.

INPUT2 jack \ Output source	[ON SYNC] G	B	R	[H/V SYNC] HD	VD
Video component/ personal computer (PC) with RGB output	○ G ON SYNC	○ B	○ R	×	×
	○ G	○ B	○ R	○ H/V SYNC	×
	○ G	○ B	○ R	○ HD	○ VD
Video component with component video output	○ Y	○ Cb/Pb	○ Cr/Pr	×	×

× : Do not connect anything. ○ : Connect to this jack.

Note

Components compatible with INPUT1 are also compatible with INPUT2.

When making connections to INPUT1, please refer to the plasma display's Operating Instructions.

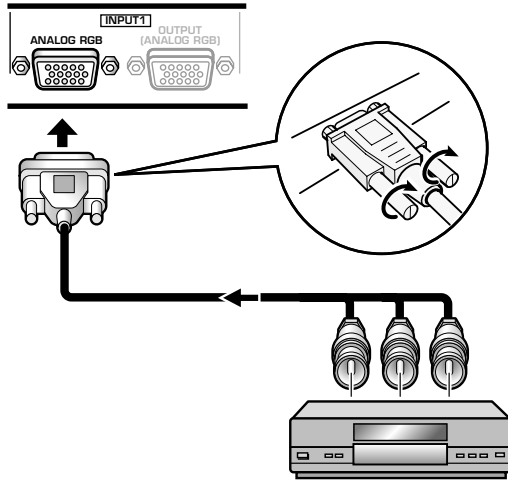
For the screen sizes and input signals that INPUT1 and INPUT2 are compatible with, please refer to the plasma display's Operating Instructions.

Connection to AV components

Connection to AV component that has component video jacks

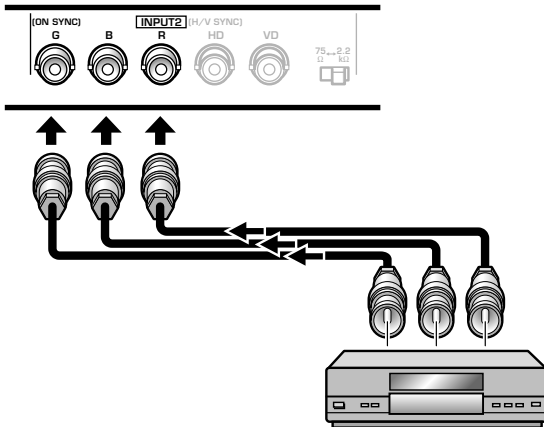
Make component video connections for AV components such as DVD and LD players or similar components with component video output capability.

When connecting to INPUT1



On-screen setup is necessary after connection. Please see page 14.

When connecting to INPUT2



Connect the Y signal to the G jack, the C_B/P_B signal to the B jack, and the C_R/P_R signal to the R jack.

On-screen setup is necessary after connection. Please see page 14.

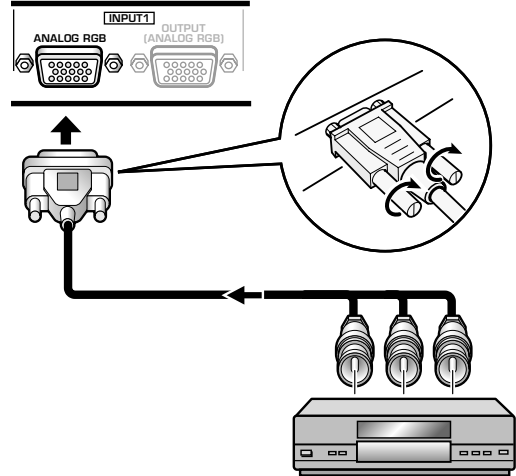
INPUT2 jacks are all BNC jacks.

If necessary, use BNC/pin conversion adapters (1 (one) included) to make connections.

Connection of G ON SYNC analog RGB source

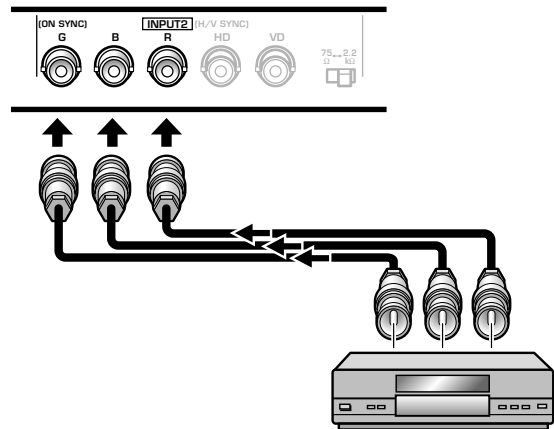
Make G ON SYNC connections for a component with output that has the synchronization signal layered on top of the green signal.

When connecting to INPUT1



On screen setup is necessary after connection. Please see pages 14 and 15.

When connecting to INPUT2



On screen setup is necessary after connection. Please see pages 14 and 15.

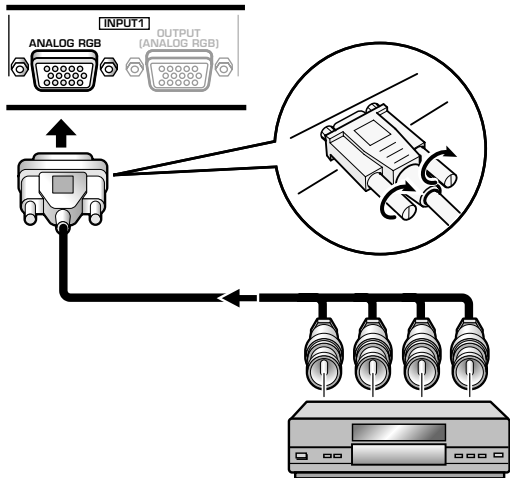
Note

When making G ON SYNC connections, do not make any connections to the VD or HD jacks. If connections are made, the picture may be not displayed normally.

Connection of composite SYNC analog RGB source

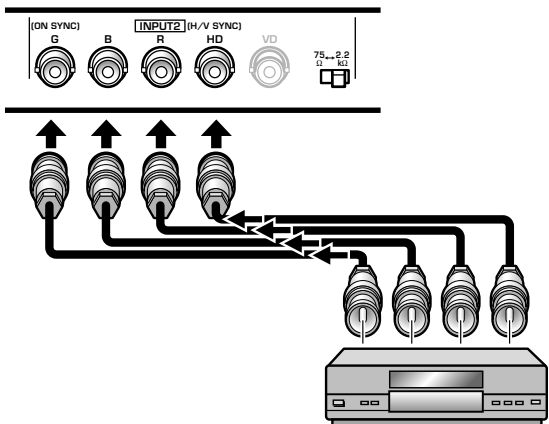
Make composite SYNC connections for a component with output that has the vertical synchronization signal layered on top of the horizontal synchronization signal.

When connecting to INPUT1



On-screen setup is necessary after connection. Please see pages 14 and 15.

When connecting to INPUT2



When using INPUT2, set the impedance selector switch to match the output impedance of the connected component's synchronization signal. When the output impedance of the component's synchronization signal is above 75 Ω, set this switch to the 2.2 kΩ position. On-screen setup is necessary after connection. Please see pages 14 and 15.

Notes

- When making composite SYNC connections, do not connect anything to the VD jack. If connected to, the picture may not be displayed properly.
- On some types of Macintosh® components, G ON SYNC and composite SYNC are both output. With this type of component, please connect using the G ON SYNC connection (as shown left).

Connection to a personal computer

Connection method differs depending on the computer type. When connecting, please thoroughly read the computer's instruction manual.

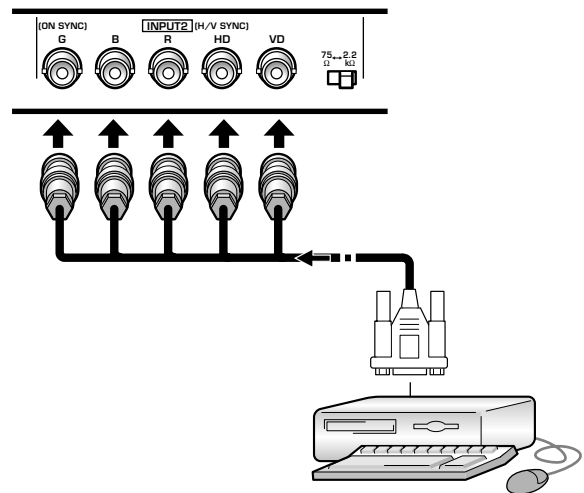
Before making connections, be sure to make sure that the personal computer's power and display's main power is off.

For the PC input signals and screen sizes that the display is compatible with, please refer to the plasma display's Operating Instructions.

Connection of separate SYNC analog RGB source

Make separate SYNC connections for a personal computer that has RGB output separated into 5 output signals: green, blue, red, horizontal synchronization signal, and vertical synchronization signal.

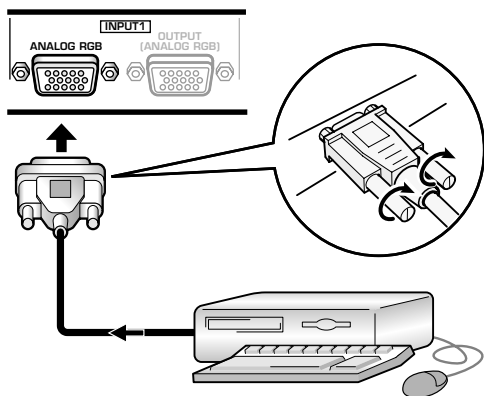
When connecting to INPUT2



When using INPUT2, set the impedance selector switch to match the output impedance of the connected computer's synchronization signal. When the output impedance of the computer's synchronization signal is above 75 Ω, set this switch to the 2.2 kΩ position.

On-screen setup is necessary after connection. Please see pages 14 and 15.

When connecting to INPUT1



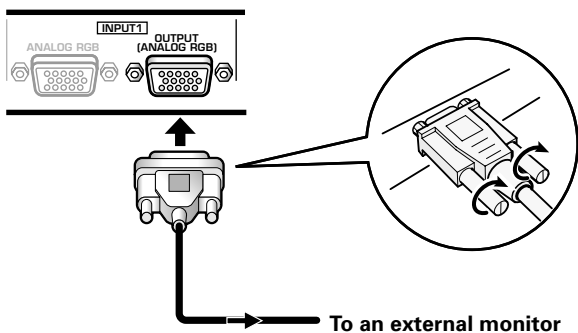
Connect the cable corresponding to the shape of the input terminal on the display and the personal computer's output terminal.
Secure by tightening the terminal screws on both units.

After connecting, on-screen setup is necessary.
Please see pages 14 and 15.

Note

Depending on the type of computer model being connected, a conversion connector or adapter etc. provided with the computer or sold separately may be necessary.
For details, please read your PC's instruction manual or consult the maker or nearest dealer of your computer.

When connecting to OUTPUT (INPUT1)



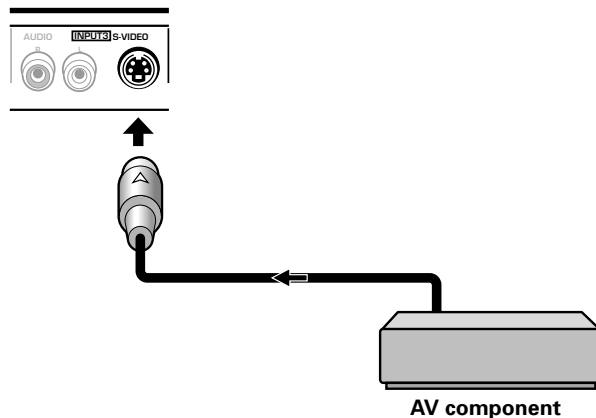
With the plasma display, it is possible to output the video signal to an external monitor or other component from the OUTPUT (INPUT1) terminal.

Note

A video signal will not be output from the OUTPUT (INPUT1) terminal when the main power of this unit is off or in standby.

Connection to INPUT3

Connect an AV component that has S-video output jack to the video card's S-VIDEO input jack.

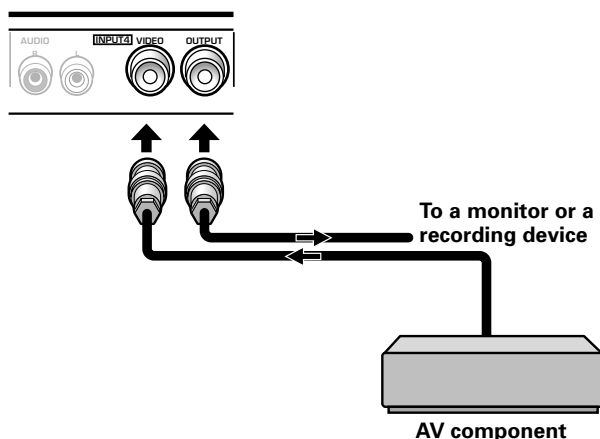


Connection to INPUT4

Connect an AV component that has a video output jack to the video card's INPUT4 jack. The OUTPUT [INPUT4] jack can be used to output the video signal to a separate monitor, recording device or other component with video input capability.

Note

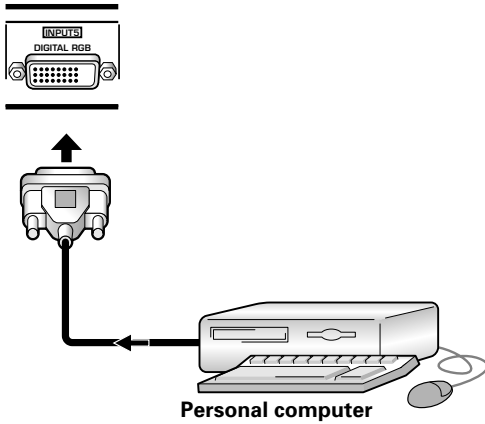
A video signal will not be output from the OUTPUT [INPUT4] jack when the main power of this display is off or in standby mode.



Signals to the INPUT3 and INPUT4 jacks are all compatible with the following TV systems: NTSC, PAL, SECAM and 4.43NTSC. For details, please refer to "Setting the regional TV system format" on pages 26-27.

Connection to INPUT5

A computer equipped with DVI output (digital RGB signal) can be connected to the video card's DVI connector.



NOTICE

- INPUT 5 supports Microsoft "Plug & Play" (VESA DDC 2B) components. See Supplement 3 (page 33) when making connections to INPUT 5.
- See Supplement 2 (page 32) for information regarding signals and display formats supported by INPUT 5.

Following completing connections, on-screen setup is necessary. See page 14 for details.

Notes

- Use a DVI-D 24-pin (digital only) cable for the connection.
- **This unit does not support the display of copyguard-protected video signals.**

About DTV Set Top Box Connection

To ensure proper connection, please carefully read the instruction manual supplied with the DTV set top box.

The set top box output signals that this display is compatible with are as follows.

Video signal type	Video signal	Video signal format	Jacks where connection is possible			
			INPUT1	INPUT2	INPUT3	INPUT4
HDTV	1125i (1080i) 1125p (1080p) 750p (720p)	Component	○	○		
		RGB	○	○		
SDTV	525i (480i) 625i (575i)	Composite				○
		S Video			○	
		Component	○	○		
	RGB	○	○			
	525p (480p) 625p (575p)	Component	○	○		
		RGB	○	○		

Audio Connections

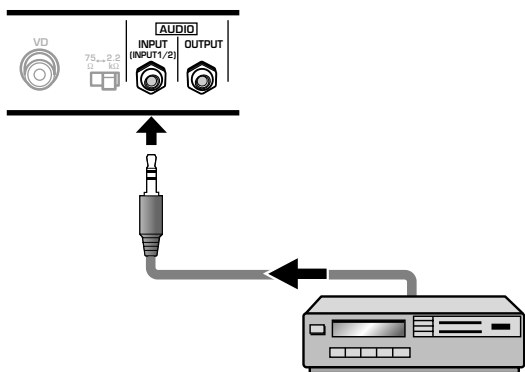
Before making connections, be sure to check that the audio component's power and the display's main power is off.

Connect an audio component to the audio input jack of the plasma display with installed video card.

When the video card is installed, the plasma display provides three audio input jacks and one audio output jack. Consult the following chart to choose the proper audio input for each video input.

Video input	Audio input jacks	Sound output
INPUT1	Stereo mini jack (L/R)	Sound of the selected video input is output from the <ul style="list-style-type: none"> • SPEAKER terminals • Stereo mini jacks (L/R).
INPUT2		
INPUT5		
INPUT3	Pin jacks (L/R)	
INPUT4	Pin jacks (L/R)	

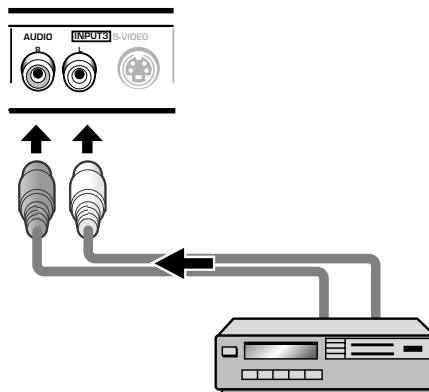
Audio connection for component connected to INPUT1, INPUT2 or INPUT5



Of the audio sources connected to INPUT1, INPUT2 and INPUT5, one can be used to connect a stereo mini-jack (L/R) type plug.

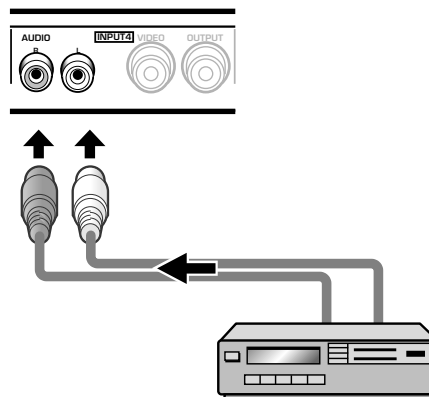
Sound is output from both the AUDIO OUTPUT jack (stereo mini jack (L/R)) and the SPEAKER terminals according to the video input selection.

Audio connection for component connected to INPUT3



Audio input to the AUDIO INPUT3 jacks (pin jacks (L/R)) is possible for a component connected to INPUT3. Sound is output from both the AUDIO OUTPUT jack (stereo mini jack (L/R)) and the SPEAKER terminals according to the video input selection.

Audio connection for component connected to INPUT4

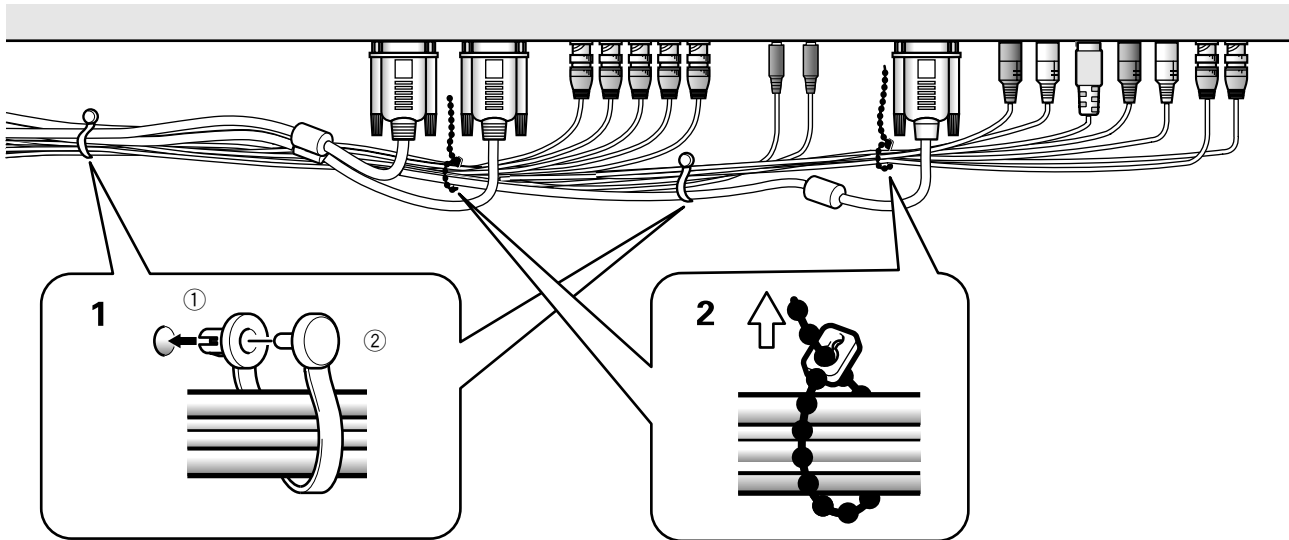


Audio input to the AUDIO INPUT4 jacks (pin jacks (L/R)) is possible for a component connected to INPUT4. Sound is output from both the AUDIO OUTPUT jack (stereo mini jack (L/R)) and the SPEAKER terminals according to the video input selection.

How to Route Cables

Speed clamps and bead bands are included with the plasma display for bunching cables together. Once components are connected, follow the following steps to route cables.

* As viewed from the rear of the display.



time and may be damaged when removed.

1 Organize cables together using the provided speed clamps.

Insert ① into an appropriate hole on the rear of the unit, then snap ② into the back of ① to fix the clamp.

Speed clamps are designed to be difficult to undo once in place. Please attach carefully.

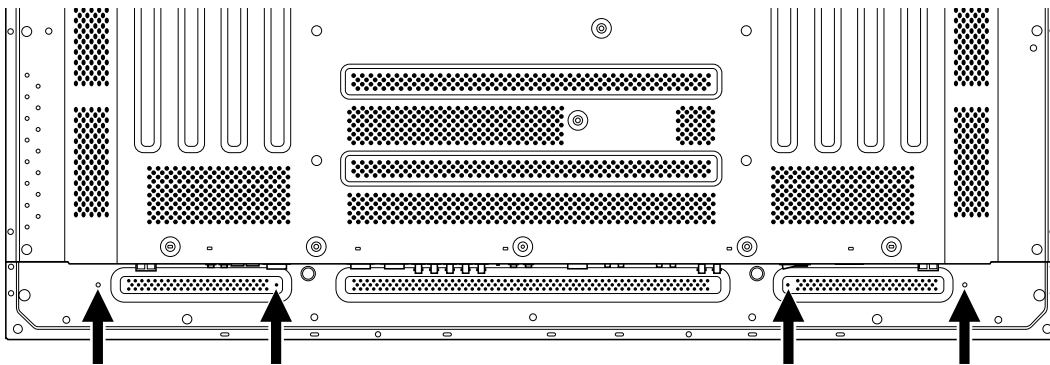
2 Bunch separated cables together and secure them with the provided bead bands.

Note

Cables can be routed to the right or left.

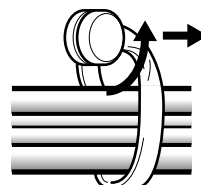
To attach the speed clamps to the display

Connect the speed clamps using the 4 holes marked with • below, depending on the situation.



To remove speed clamps

Using pliers, twist the clamp 90° and pull it outward. In some cases the clamp may have deteriorated over



Setup after Connection

After components have been connected to INPUT1, INPUT2 or INPUT5, on-screen setup is necessary. Follow the procedure described below and make settings as they apply to the type of components connected.

Setting the Screen Mode / Input Signal Format

- 1 Switch MAIN POWER on the connection panel to the on position to turn on the display's main power.

The STANDBY/ON indicator lights red.

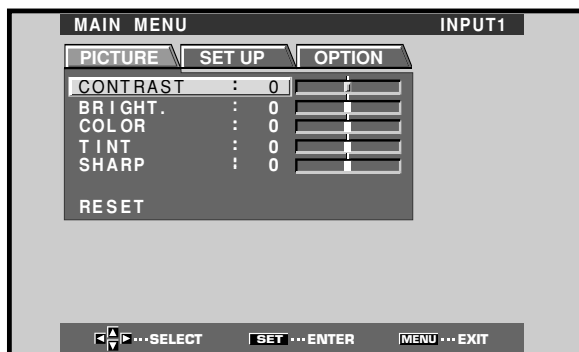
- 2 Press STANDBY/ON to put the display in the operation mode.

The STANDBY/ON indicator turns green.

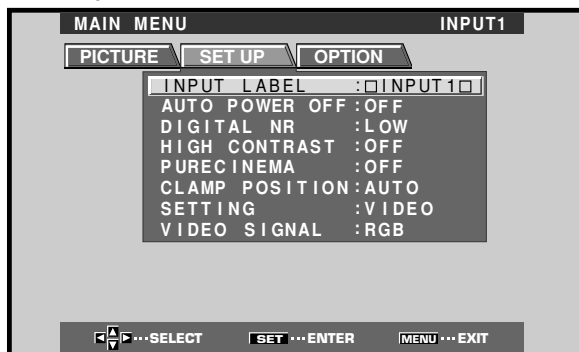
- 3 Select INPUT1, INPUT2 or INPUT5.

- 4 Press MENU to display the menu screen.

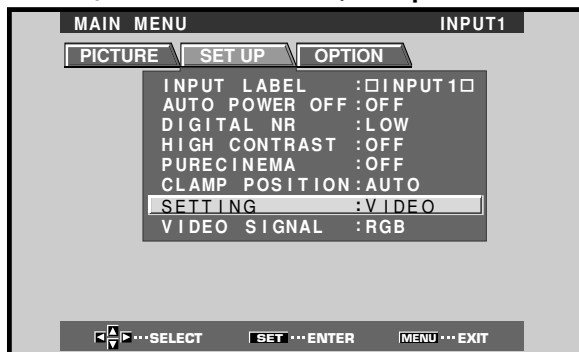
The menu screen appears.



- 5 Press ◀/▶ to select SET UP.



- 6 Press ▲/▼ to select SETTING, then press SET.

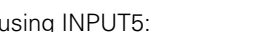
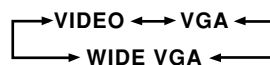


- 7 Press ◀/▶ to select the display mode.

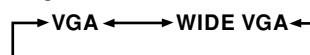


When a component other than a personal computer is connected, set to "VIDEO".

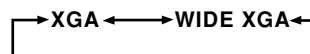
- ① When the input signal has a refresh rate of 31.5 kHz horizontal / 60 Hz vertical, pressing ◀/▶ will cause the display mode to change alternately as follows:
When using INPUT1 or INPUT2:



When using INPUT5:



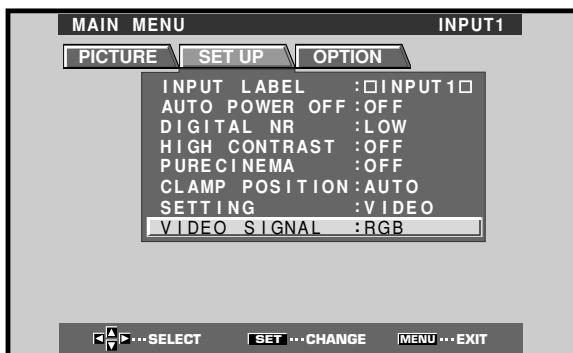
- ② When the input signal has a refresh rate of 48.4 kHz horizontal / 60 Hz vertical, or 56.5 kHz horizontal / 70 Hz vertical, pressing ◀/▶ will cause the display mode to change alternately as follows:



Note

Setup steps 6-7 are required only when using signals with the following refresh rates: ① 31.5 kHz horizontal / 60 Hz vertical; ② 48.4 kHz horizontal / 60 Hz vertical, or 56.5 kHz horizontal / 70 Hz vertical. No manual setup is necessary for signals with other refresh rates, since adjustments are performed automatically (the SETTING item will not be displayed).

- 8 When VIDEO is selected, press ▲/▼ to select VIDEO SIGNAL.



- 9 Press SET repeatedly to select the input signal format.

Selection will change as follows each time SET is pressed.



The table below shows what settings are appropriate and available for the type of connections made.

Set SETTING and VIDEO SIGNAL as follows.

Connected component	SET UP	SETTING	SIGNAL
Component video output of a DVD player, etc.	VIDEO		COMPONENT
RGB video output of a video deck etc., with RGB output	VIDEO		RGB
RGB video output of a PC	VGA		Not supported
		WIDE VGA	
		XGA	
		WIDE XGA	

10 When the setup is completed, press MENU to exit the menu screen.

Notes

- Make this setup for each input (INPUT1 and INPUT2).
- The VIDEO SIGNAL setting is not supported when inputting a computer signal, or when the SETTINGS function has been used to select a signal other than VIDEO.

CLAMP POSITION setup

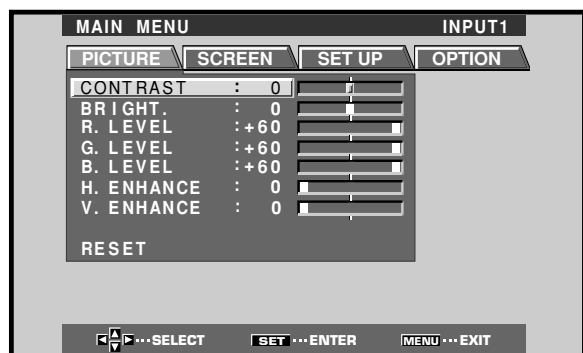
Depending on the signal, analog RGB signals may result in the screen image appearing with a whitish or greenish cast. In such cases, set "CLAMP POSITION" to LOCKED.

- Normally, leave this setting at AUTO.

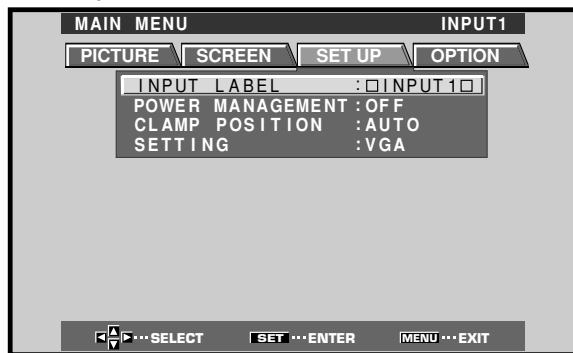
Setup of CLAMP POSITION

1 Press MENU to display the menu screen.

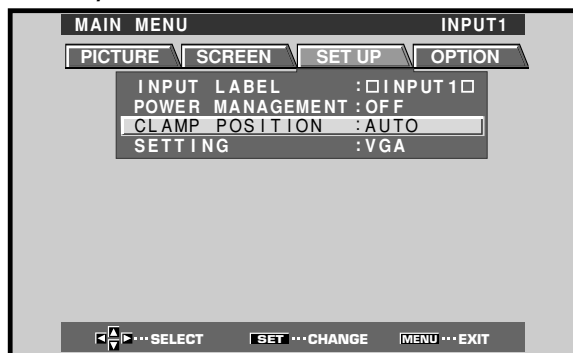
The menu screen appears.



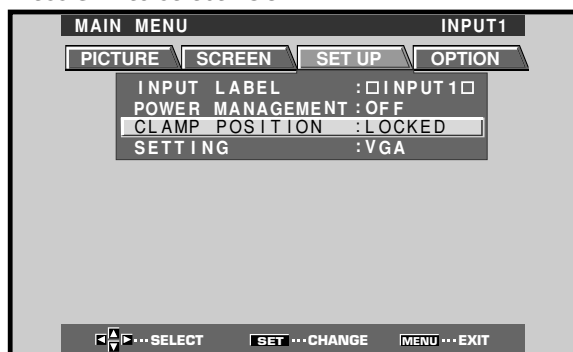
2 Press ◀/▶ to select SET UP.



3 Press ▲/▼ to select CLAMP POSITION.



4 Press SET to select LOCKED.



Mode selection will change as follows each time SET is pressed.



5 When the setup is completed, press MENU to exit the menu screen.

Notes

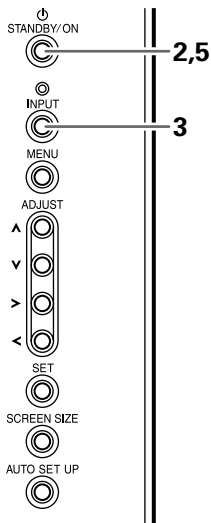
- Make this CLAMP POSITION setting for each applicable input (INPUT1 and INPUT2).
- When using this setup, be sure to carefully check the signal output of the component that you are using. For details, please refer to the instruction manual supplied with the component you are connecting.

Selecting an Input Source

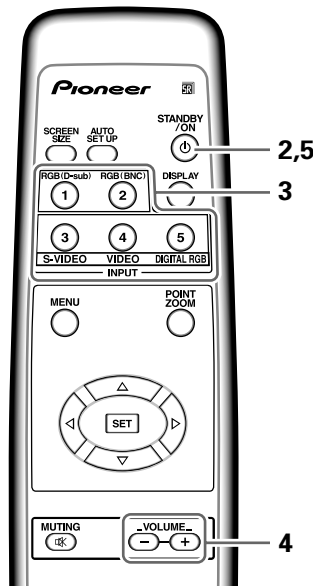
This section explains the basic operation of the plasma display. Outlined on the following pages is how to turn the main power on and off, put this display in the operation or standby mode and how to select connected components.

Before you begin, make sure you have:

- Made connections between the plasma display and AV components or personal computer as described in the section "Installation and Connections" starting on page 6.
 - Set up the on-screen menu to input signals from components connected to INPUT1, INPUT2 and INPUT5 as described in the section "Setting Up the System" on page 14.
- If no connections are made to these terminals, on-screen setup is not necessary.



Display Operating Panel

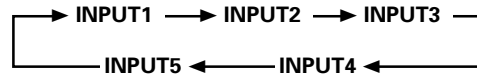


Remote Control Unit

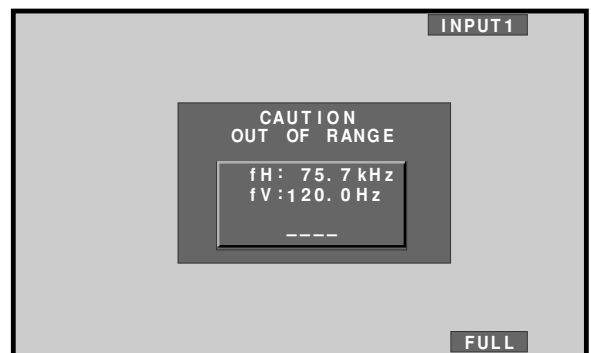
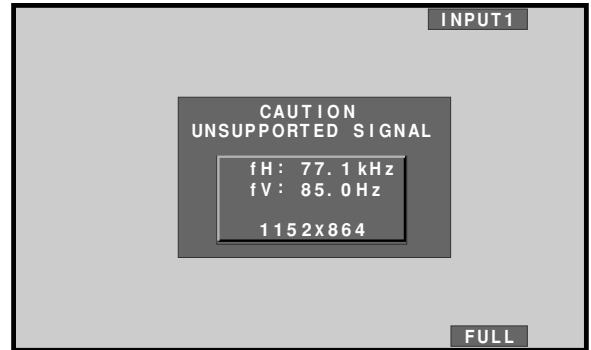
- 1 Switch MAIN POWER on the display to the on position to turn the main power on.**
The STANDBY/ON indicator lights red.
- 2 Press STANDBY/ON to put the plasma display in the operation mode.**
The STANDBY/ON indicator turns green.

3 Press INPUT on the remote control unit or the display to select the input.

Input changes each time the display's INPUT is pressed as follows.



- When the menu screen is displayed, changing the signal input will cause the menu screen to turn off.
- If the input computer signal is not supported by the display, the following message will be displayed:

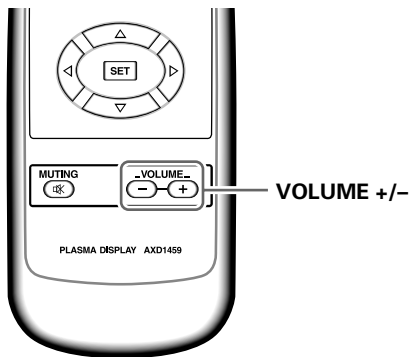


- 4 Use VOLUME +/- on the remote control unit to adjust the volume.**
If no audio connections are made to the plasma display, this step is not necessary.
- 5 When viewing is finished, press STANDBY/ON to put the display in standby mode.**
The STANDBY/ON indicator will blink and then remain lit (red) indicating that the standby mode is engaged. Operation is not possible while the STANDBY/ON indicator is blinking (red).
- 6 Switch MAIN POWER on the display to the off position to turn the main power off.**
The STANDBY/ON indicator may continue to light for a short while even after the main power is turned off. This is a result of residual electric load impressed on the circuitry, and the light will turn off presently.

CAUTION

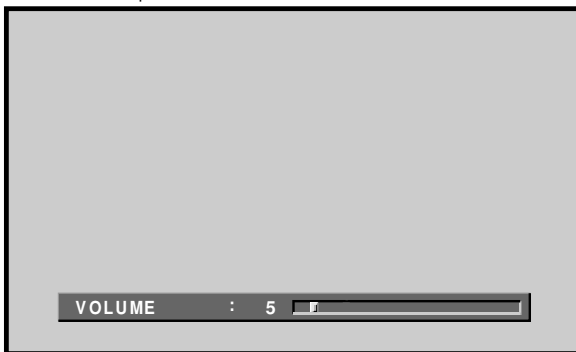
Please do not leave the same picture displayed on the screen for a long time. Doing so may cause a phenomenon known as "screen burn" which leaves a ghost, or residual, image of the picture on the screen.

To adjust the volume

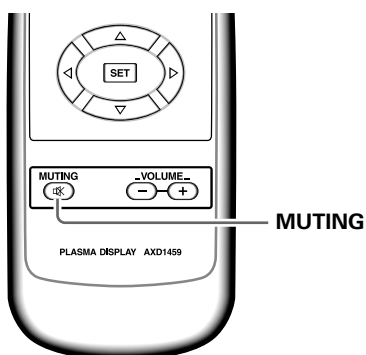


Press **VOLUME** on the remote control unit.

Use **VOLUME +** or **VOLUME -** to adjust the volume of the connected speakers.



To mute the sound



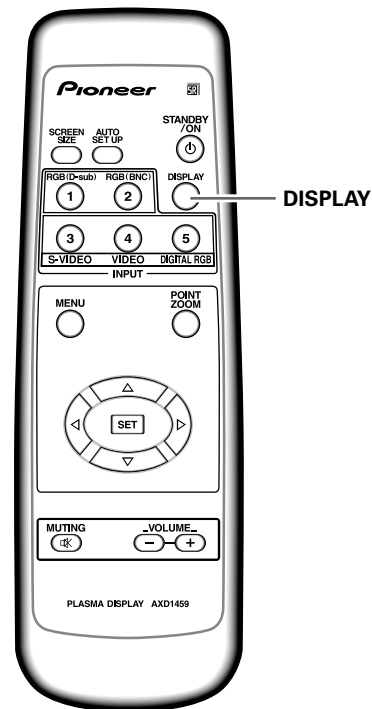
Press **MUTING** on the remote control unit.

Press **MUTING** again to restore the sound.

Muting is automatically canceled about 8 minutes after the button is pressed, and the volume level is adjusted to the minimum level.

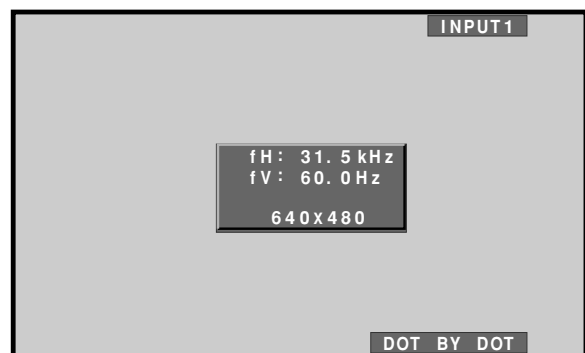
Press **VOLUME +** or **VOLUME -** to adjust the volume at a desired level.

To confirm display settings



Press **DISPLAY** on the remote control unit.

The currently selected input, screen size and refresh rates will be displayed for about 3 seconds.



Note

The displayed refresh rates may be slightly different from the actual values.

Screen Size Selection

The plasma display incorporates screen modes of various height and width ratios. For optimal viewing, we recommend that you select the screen mode that best matches the video source that you are viewing. Although these modes are designed for full display of a picture on a wide screen, it is our hope that you make use of them with a full understanding of the manufacturer's intentions.

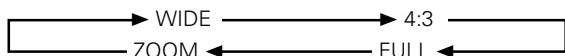
Changing the screen size

For video signals

The size of the picture or the picture's range projected on the screen can be changed between 4 screen sizes described in the table on this page.

Press SCREEN SIZE to select the size.

The screen size changes each time **SCREEN SIZE** is pressed as follows.



Notes

- When the WIDE, ZOOM, or FULL setting is used to display a non-wide screen 4:3 picture fully on a wide screen, a portion of the picture may be cut off or appear deformed.
- Be aware that when the display is used for commercial or public viewing purposes, selecting the WIDE, ZOOM or FULL mode settings may violate the rights of authors protected under copyright law.

Moving the screen position upward or downward

When a vista size movie etc., is viewed at the ZOOM setting, the image may not be centered on the screen, and may extend past the edge of the screen. In this case, adjust the screen to an clearly viewable position using ▲/▼.

Automatic screen size

When a High-Definition Television signal (1125i, 750p, 1125p) is detected, the screen size is automatically changed to FULL.

During video signal input

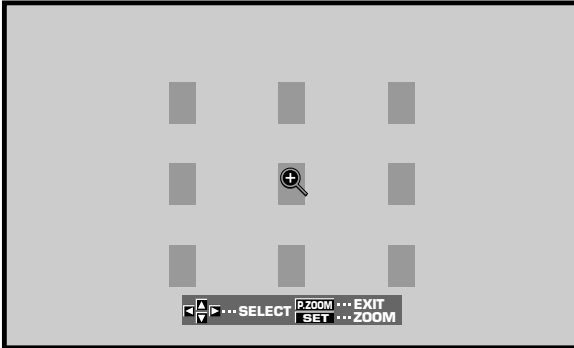
How the picture looks	
<p>WIDE</p>	Suitable for when viewing news or sports programs. Movies or sports programs can be viewed with an expansive powerful image.
<p>4:3</p>	Suitable for when viewing news or sit coms. The video software can be viewed in its original screen frame size. (To prevent screen burn on this display, the displayed position of the screen frame will be slightly different each time the power is turned on.)
<p>FULL</p>	Suitable for wide screen images (squeeze).
<p>ZOOM</p>	Mainly suitable for viewing Cinemascope size and other such movie images. Provides a more expansive, powerful image.

Consult the plasma display's Operating Instructions regarding the screen size during computer signal input.

Partial Image Enlargement (POINT ZOOM)

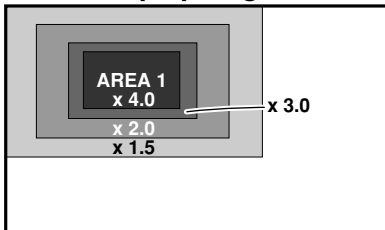
This display allows any one of nine screen areas (AREA 1 to AREA 9) to be selected and enlarged to 1.5x, 2x, 3x, or 4x. When performing point zoom enlargement, the direction buttons (▲/▼/◀/▶) can be used to move the enlarged portion up-down and right-left.

1 Press the remote control unit's POINT ZOOM.

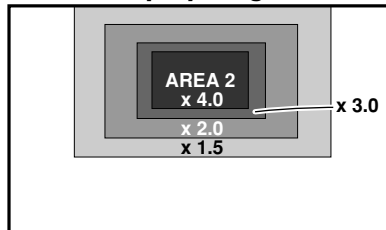


2 Press ▲/▼/◀/▶ as required to select the desired screen area (AREA 1 to AREA 9).

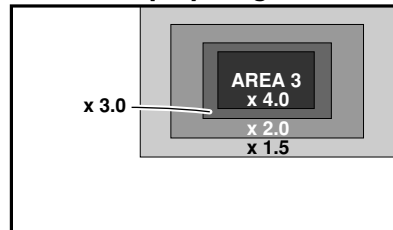
AREA 1 display range



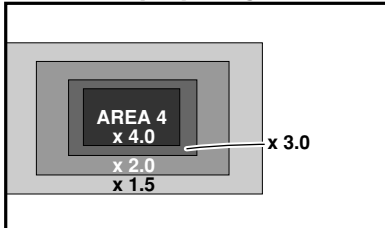
AREA 2 display range



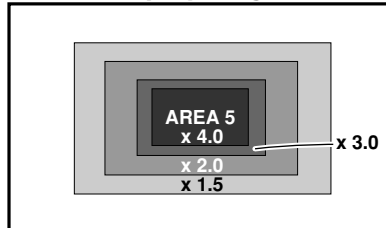
AREA 3 display range



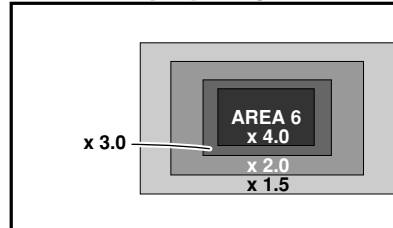
AREA 4 display range



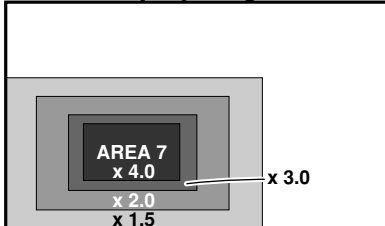
AREA 5 display range



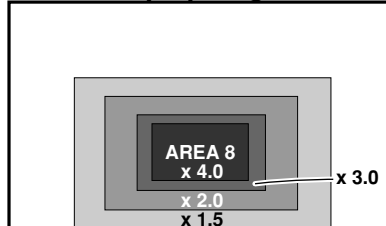
AREA 6 display range



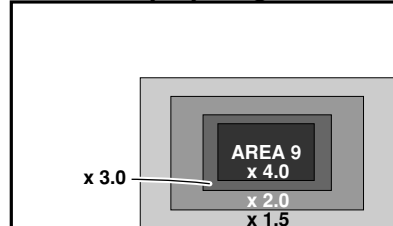
AREA 7 display range



AREA 8 display range

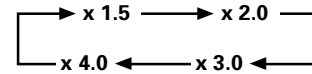


AREA 9 display range



3 Press SET to select the zoom ratio.

Pressing SET repeatedly changes the zoom ratio in the following order:



- When the zoom ratio is changed, the screen image is enlarged based on the screen center.
- ▲/▼/◀/▶ can be used to move the enlarged portion up-down and right-left.
- If no operation is undertaken for three seconds or more, the display screen will disappear. SET or ▲/▼/◀/▶ can be pressed again if desired to change the zoom ratio or display position.

4 Press the remote control unit's POINT ZOOM once again to cancel the point zoom operation.

The point zoom function will also be canceled whenever the input signal changes, the menu screen is displayed, or the INPUT changes.

Notes

- Whenever POINT ZOOM is selected, the screen size automatically changes to FULL.
- The POINT ZOOM function is supported only when the input signal is from a computer.

Automatic Power OFF

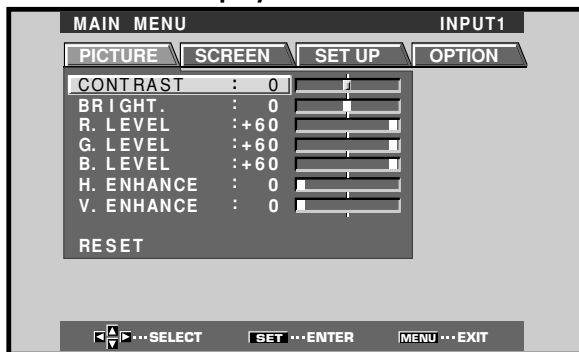
The plasma display is equipped with automatic power-management and auto-power-off functions, which allow the unit to automatically switch to power-saving mode when no sync signal is detected.

(A warning message appears on-screen before these functions operate.)

Notes

- Power management settings are supported only when a computer signal is input to INPUT 1, or when INPUT 5 is selected.
- The auto-power-off function can be used only in those cases other than the inputs used in the preceding item.
- Always turn off the plasma display's main power switch when not using the display for extended periods of time.

1 Press MENU to display the menu screen.

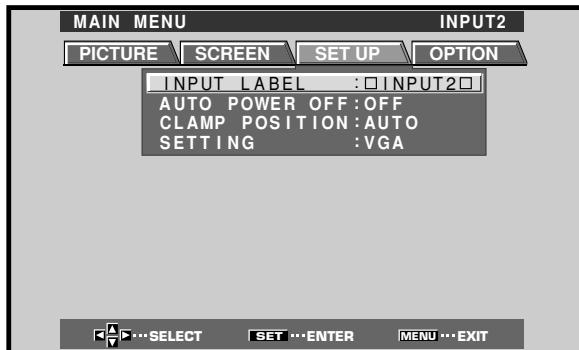


2 Press ◀/▶ to select SET UP.

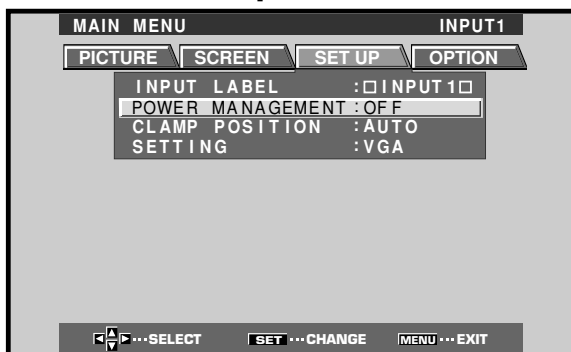
[When computer signal is input to INPUT 1, or when INPUT 5 is used]



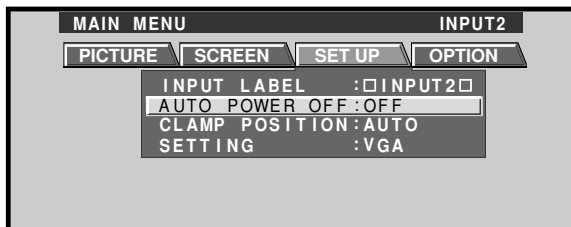
[In all other cases]



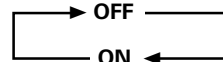
3 Press ▲/▼ to select either the POWER MANAGEMENT or AUTO POWER OFF mode. [When computer signal is input to INPUT 1, or when INPUT 5 is used]



[In all other cases]



4 Press SET to confirm selection of the POWER MANAGEMENT or AUTO POWER OFF.



- When OFF is selected, the display will continue in operating mode, regardless of the presence/absence of an input sync signal.
- When **POWER MANAGEMENT: ON** is selected, the display automatically enters the power-saving mode (*1) and the STANDBY/ON indicator blinks green whenever a sync signal is not detected. If a sync signal (*2) is input again later, the plasma display automatically returns to normal operating mode.
 - *1. Power consumption is about 1 W when INPUT 1 is used, and about 50 W when INPUT 5 is used.
 - *2. Except when input signal is G on SYNC or composite SYNC
- When **AUTO POWER OFF: ON** is selected, if no sync signal is detected for 8 minutes or more, a warning message will be displayed for 30 seconds, after which the display's power will switch to STANDBY mode.

5 When the setup is finished, press MENU to exit the menu screen.

Note

The POWER MANAGEMENT and AUTO POWER OFF functions must be set individually for each input (INPUT1-5).

To return to operating mode:

- **To return to normal operation from POWER MANAGEMENT mode:** either operate the computer, or press INPUT on the display or remote control unit.
- **To return to normal operation from AUTO POWER OFF mode:** Press STANDBY/ON on the display or remote control unit.

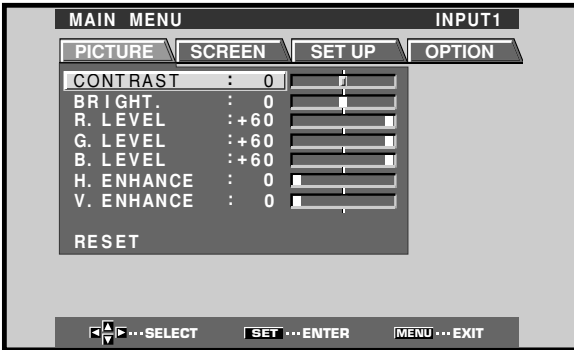
Display Panel Adjustments

Adjusting the Picture Quality

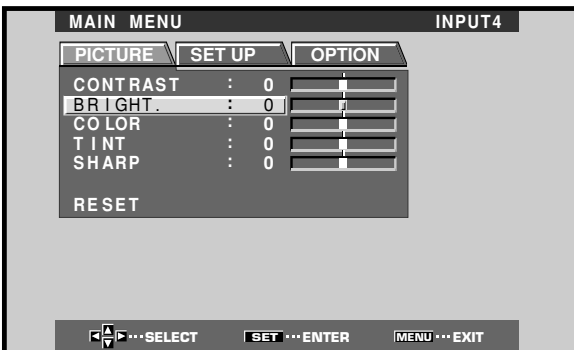
1 Press **MENU** to display the menu screen.



When viewing an image from a personal computer from INPUT1, INPUT2 or INPUT5, the following screen is displayed.



2 Press **▲/▼** to select the adjustment item, then press **SET**.



3 Press **◀/▶** to adjust the picture quality as desired.



4 Press **SET**.

Pressing **SET** writes the value into the memory and returns the display to the step 2 screen.

5 When the setup is finished, press **MENU** to exit the menu screen.

Note

Make these adjustments for each input (INPUT1 to INPUT5) and signals.

PICTURE mode adjustment items

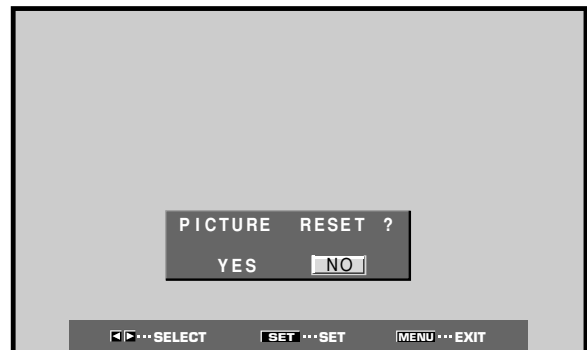
Below are brief descriptions of the options that can be set in the PICTURE mode.

- CONTRAST Adjust according to the surrounding brightness so that the picture can be seen clearly.
- BRIGHT. Adjust so that the dark parts of the picture can be seen clearly.
- COLOR Adjust to the desired depth. (Setting to a slightly deep color will create a natural looking picture.)
- TINT Adjust so that flesh tones look normal.
- SHARP Normally set to the center position. To create a softer picture, set to the left of center. To create a sharper picture, set to the right of center.

To reset PICTURE mode settings to the default

If settings have been adjusted excessively or the picture on the screen no longer appears natural, it may prove more beneficial to reset the PICTURE mode to default settings instead of trying to make adjustments under already adjusted conditions.

1 In step 2 in the previous procedure, press **▲/▼** to select **RESET**, then press **SET**.



2 Press **◀/▶** to select **YES**, and press **SET**.

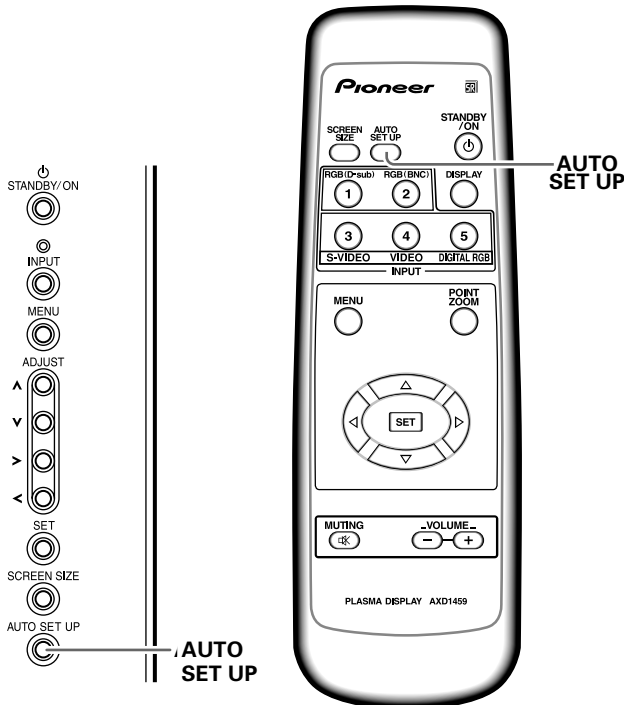
All PICTURE mode settings are returned to the factory set default.

Adjusting the Image Position and Clock (Automatic Adjustment)

Pressing AUTO SET UP on either the display or the remote control unit will adjust the screen position and clock to optimum values.

Notes

- This adjustment is supported only when a computer signal is connected to INPUT1 or INPUT2.
- Perform this adjustment individually for each input function (INPUT1 or INPUT2), and each signal type.



Display Operating Panel Remote Control Unit

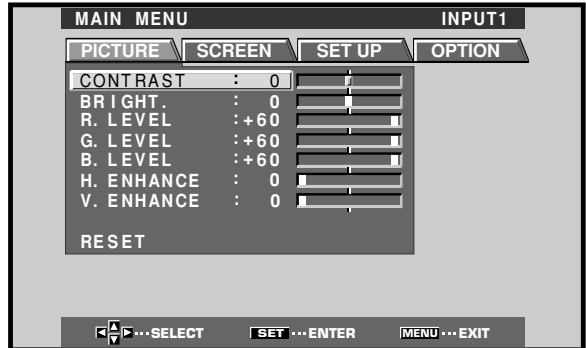
Press **AUTO SET UP** on either the display or remote control unit.

- Optimum settings may not be possible for low-luminance and certain other kinds of signals. In this case, following the instructions in the following section “**Manual Adjustment of Screen Position and Clock**” to make more precise adjustments.

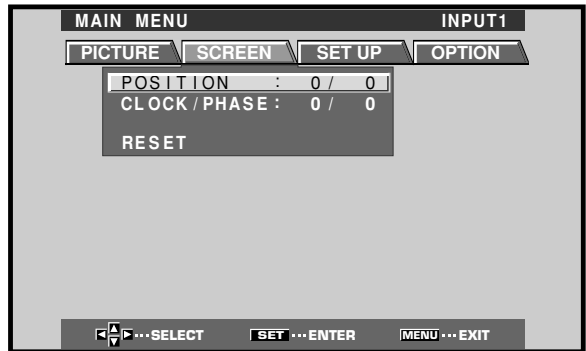
Manual Adjustment of Screen Position and Clock

This setting can be adjusted when a computer signal is connected to INPUT1, INPUT2, or INPUT5. (The settings on this page are not supported when INPUT3 or INPUT4 is selected, or when a video signal is input).

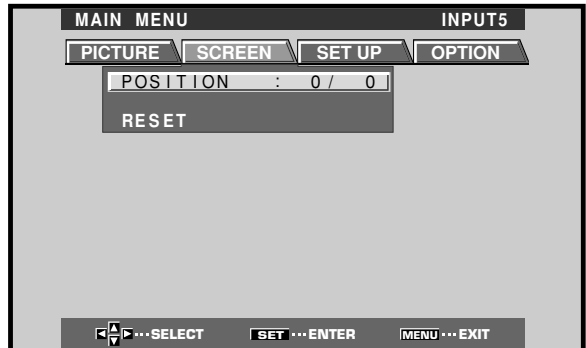
1 Press MENU to display the menu screen.



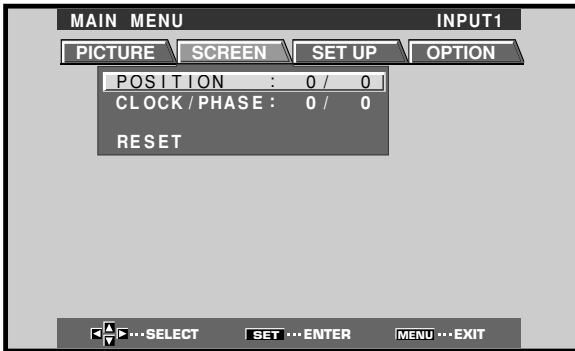
2 Press <left>/<right> to select SCREEN.



INPUT5 is selected, the following screen will appear and the POSITION adjustment only can be selected.



3 Press ▲/▼ to select the adjustment item, then press SET.



4 Press ◀/▶ to carry out the adjustment.



Use ▲/▼ for the adjustments of V.POSITION and PHASE.

5 Press SET.

Pressing **SET** writes the value into the memory and returns the display to the step 3 screen.

6 When adjustment is finished, press MENU to exit the menu screen.

Note

Make these adjustments for each input (INPUT1, INPUT2 or INPUT5) and signals.

SCREEN mode adjustment items

Below are brief descriptions of the options that can be set in the SCREEN mode.

POSITION

H.POSITION Adjust the picture's position to the left or right.

V.POSITION Adjust the picture's position upward or downward.

CLOCK/PHASE

CLOCK Adjust letter breakup or noise on the screen. This setting adjusts the display's internal clock signal frequency that corresponds to the input video signal.

PHASE Adjust so that there is minimum flicker of screen letters or color misalignment. This setting adjusts the phase of the internal clock signal adjusted by the CLOCK setting.

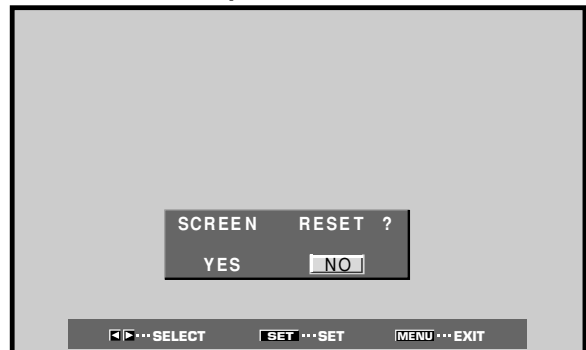
Notes

- When CLOCK adjustment is carried out, the H.POSITION setting may have to be re-adjusted.
- If the adjustment items in the SCREEN mode are adjusted excessively, the picture may not be displayed properly.

To reset SCREEN mode settings to the default

If settings have been adjusted excessively or the picture on the screen no longer appears natural, it may prove more beneficial to reset the SCREEN mode to default settings instead of trying to make adjustments under already adjusted conditions.

1 In step 3 in the previous procedure, press ▲/▼ to select RESET, then press SET.



2 Press ◀/▶ to select YES, and press SET.

All SCREEN mode settings are returned to the factory set default.

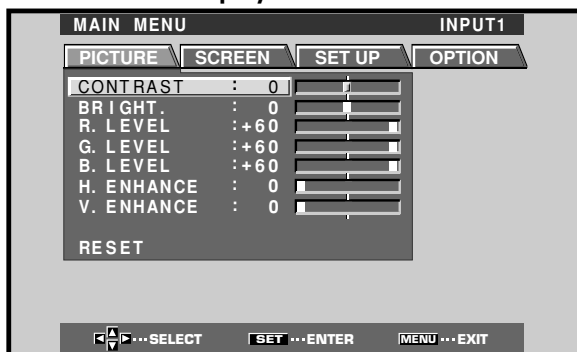
Rewriting the Input Display (INPUT LABEL)

This function allows rewriting of the screen contents displayed with differing inputs. For example, the default "INPUT1" can be changed to "COMPUTER" or other name describing the connected component (up to maximum of 8 characters).

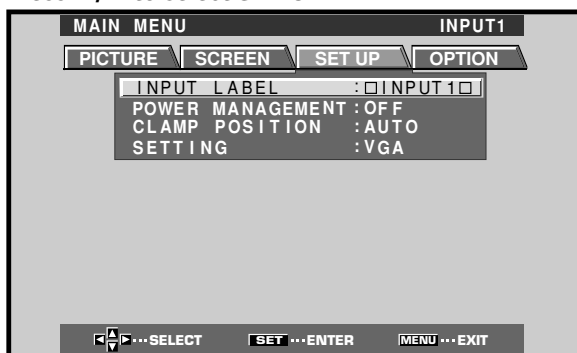
Example: To rewrite the default "INPUT1" message to display "COMPUTER" instead.

1 Press INPUT and set input to INPUT1.

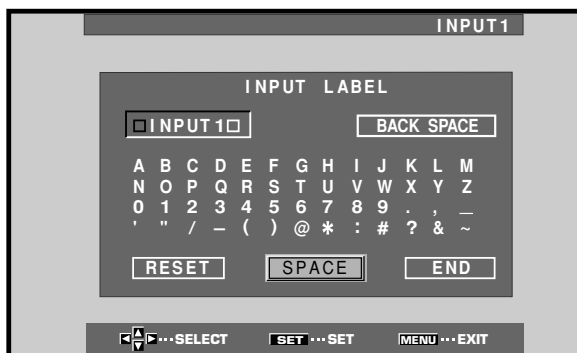
2 Press MENU to display the menu screen.



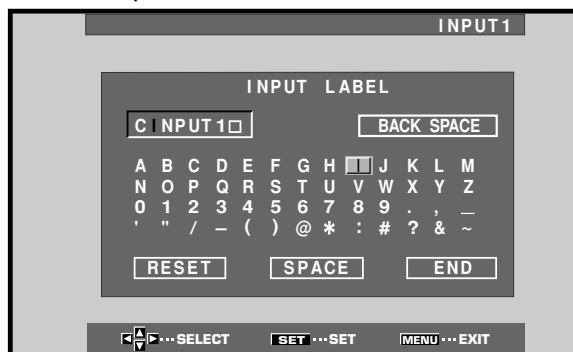
3 Press left/right arrow to select SET UP.



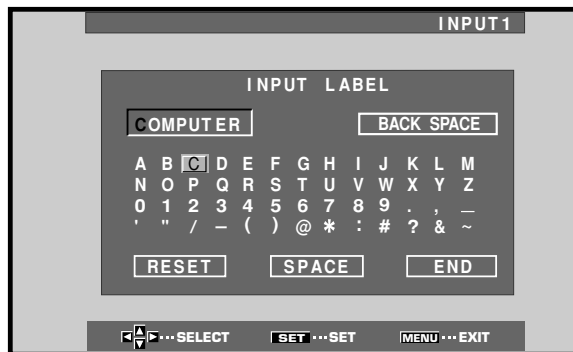
4 Press SET to select INPUT LABEL.



5 Press left/right/up/down arrow to select the first desired character (here, "C"), then press SET to confirm (repeat this step to input up to eight desired characters.)



- Usable characters include 52 types displayable on screen.
- When a character is selected and SET pressed, the input point (cursor position) advances by one.
- If you input a mistaken character, press BACK SPACE followed by SET to move the input point (cursor position) back by one.
- To return the display to its default value (INPUT1), press RESET followed by SET.



6 After setting all inputs as desired, press left/right/up/down arrow to select END, followed by SET.



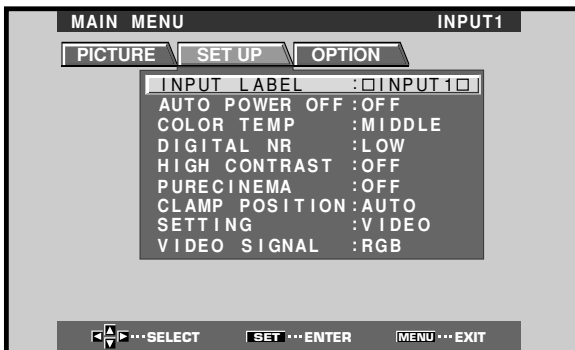
7 Press MENU to return to the normal display screen.

Changing the Color Temperature (COLOR TEMP)

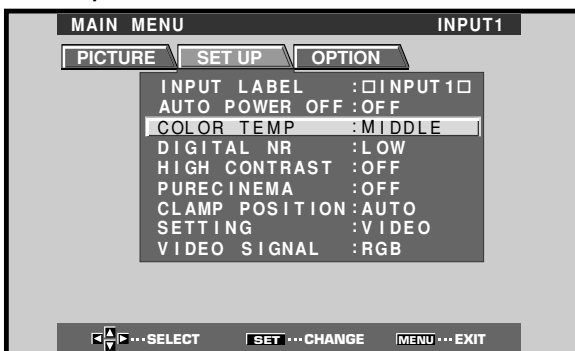
- 1 Press **MENU** to display the menu screen.



- 2 Press **◀/▶** to select **SET UP**.



- 3 Press **▲/▼** to select **COLOR TEMP**.



- 4 Press **SET** to select the desired color temperature setting.

The unit has been factory set at the MIDDLE setting. Each time **SET** is pressed, the color temperature setting changes as shown:



- 5 Following completion of the setting, press **MENU** once again to return to the normal display.

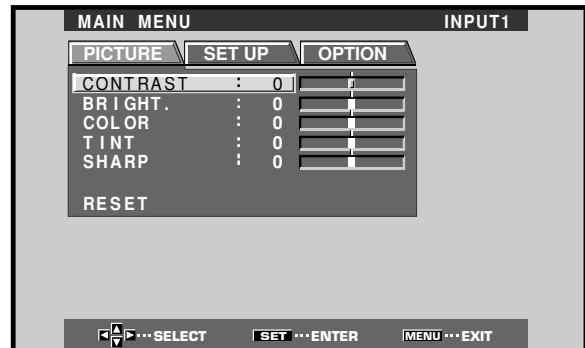
Note

Color temperature settings are supported only with input signals from a video device. Settings are made individually for each of the inputs (INPUT1 - INPUT4).

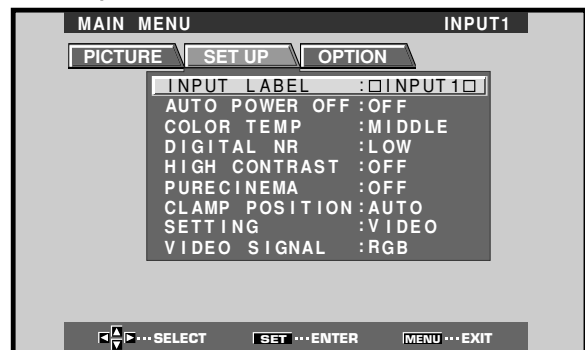
Reducing Video Noise (DIGITAL NR)

Make this setting if video noise is objectionable.

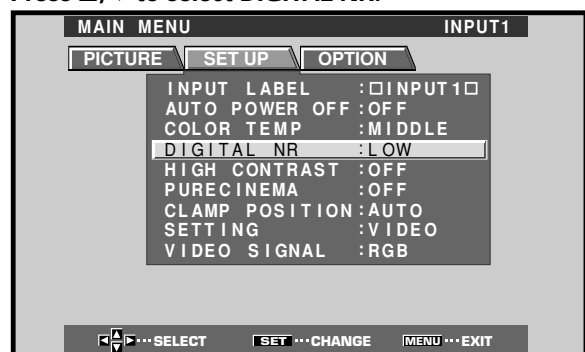
- 1 Press **MENU** to display the menu screen.



- 2 Press **◀/▶** to select **SET UP**.



- 3 Press **▲/▼** to select **DIGITAL NR**.



- 4 Press **SET** to select the desired **DIGITAL NR** setting.

The unit has been factory set to the LOW setting.

Each time **SET** is pressed, the digital noise reduction setting changes as shown:



- The noise reduction effect increases in order LOW → MIDDLE → HIGH

- 5 Following completion of the setting, press **MENU** once again to return to the normal display.

Note

Digital noise reduction settings are supported only with input signals from a video device. Settings are made individually for each of the inputs (INPUT1 - INPUT4).

Setting the PureCinema mode

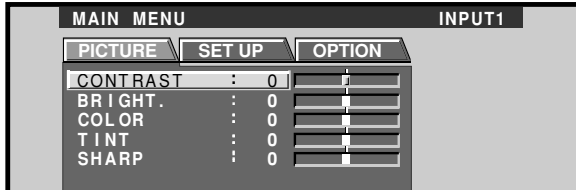
When the PureCinema mode is selected, it functions automatically to detect video signals of movies recorded at 24 frames-per-second, changing the scan settings to allow enjoyment of higher quality movie playback. It does this by converting the video signal to progressive scan. When using the PureCinema function, it should ordinarily be set to "HQ." Note, however, that due to the time required for video signal processing, a time lag may occur with the audio signal, and if this lag is objectionable, set the mode to "STANDARD." When set to OFF (factory default), only standard progressive conversion is used.

Note

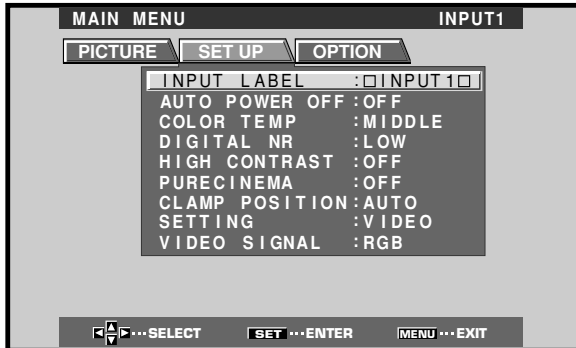
The PureCinema mode is supported only with 525i (480i) or NTSC input signals.

This setting must be made independently for each input (INPUT 1 - INPUT 4) used.

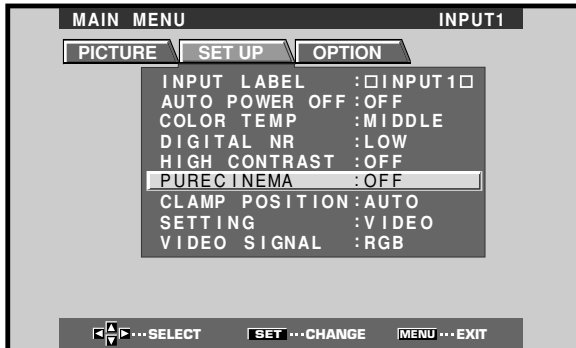
1 Press MENU to display the menu screen.



2 Press ◀/▶ to select SET UP.



3 Press ▲/▼ to select PURECINEMA.



4 Press SET to select the desired PureCinema mode.

Each time SET is pressed, the screen mode setting changes as shown:



5 Following completion of the setting, press MENU once again to return to the normal display.

Setting the Regional TV System Format

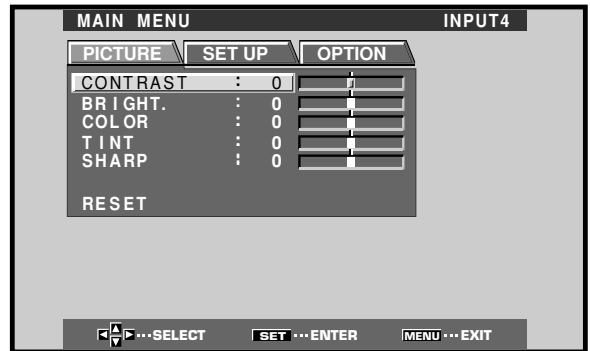
INPUT3 and INPUT4 are compatible with a number of TV system formats used around the world, which are automatically detected by this unit.

Normally "COLOR SYSTEM:AUTO" should be selected for automatic detection. However, some video signals are dubbed over or in certain conditions may not be displayed properly (loss of color, etc.) by this setting. In this case, change the setting according to the input signal.

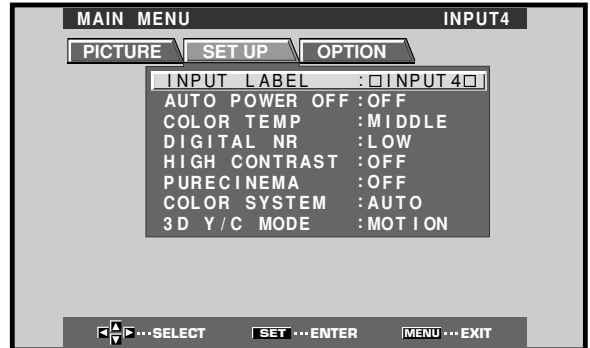
Note

Setting the TV system format is required for both INPUT3 and INPUT4. Setting assignment and exclusive use according to the TV system format of your input signal will enable prompt processing of signals and reduction of time for input selection and possible errors in detecting signals.

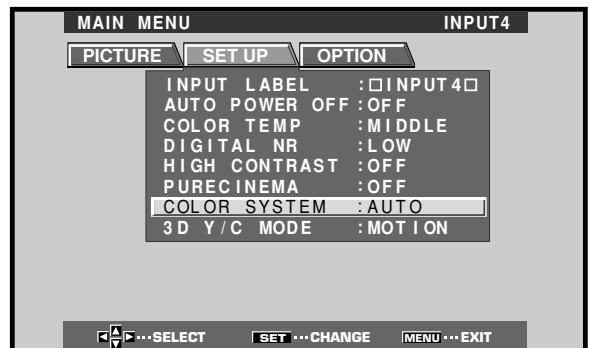
1 Press MENU to display the menu screen.



2 Press ◀/▶ to select SET UP.

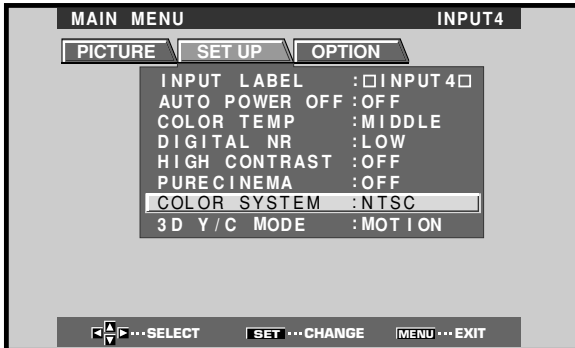
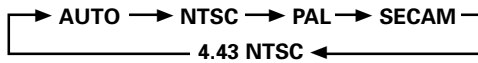


3 Press ▲/▼ to select COLOR SYSTEM.



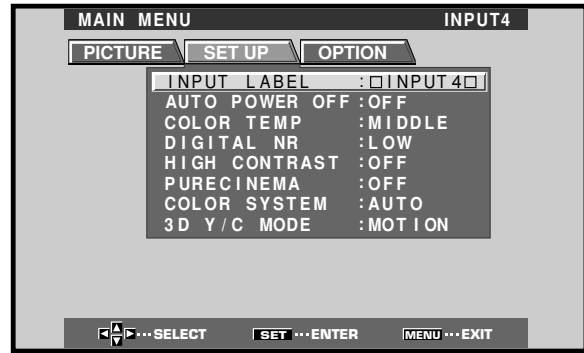
4 Press SET repeatedly until the appropriate setting appears.

Each time **SET** is pressed, the settings change in the following order.

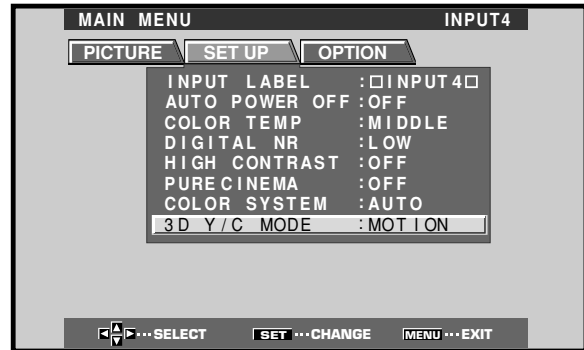


5 When the setup is finished, press MENU to exit the menu screen.

2 Press ◀/▶ to select SET UP.



3 Press ▲/▼ to select 3D Y/C MODE.



4 Press SET to set the mode to "MOTION".

"MOTION" is set when this unit is shipped from the factory.

Each time **SET** is pressed, the settings change in the following order.



5 When the setup is finished, press MENU to exit the menu screen.

Viewing a Fast Moving Picture (3D Y/C MODE)

When viewing a fast moving picture such as might be experienced with a sports program, setting this mode to "MOTION" will reduce picture blur and create a clearer image.

- Set this mode to "STILL" when not viewing a fast moving picture.

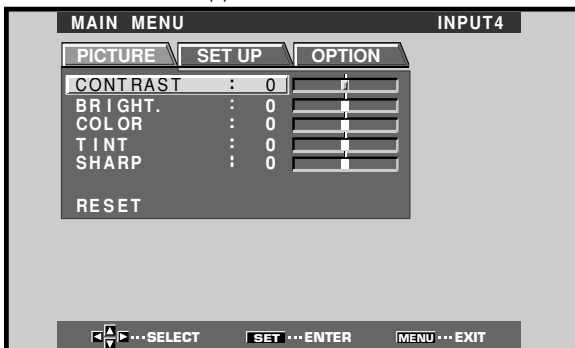
Notes

3D Y/C MODE setting is possible only when the unit is complying with all the following conditions:

- When INPUT4 is selected.
- While COLOR SYSTEM is set to AUTO and the unit is receiving an NTSC signal or when COLOR SYSTEM is set to NTSC.

1 Press MENU to display the menu screen.

The menu screen appears.



Viewing in a Bright Location (HIGH CONTRAST)

When viewing a picture in a bright location, setting this mode to "ON" will enable you to obtain a clear video image.

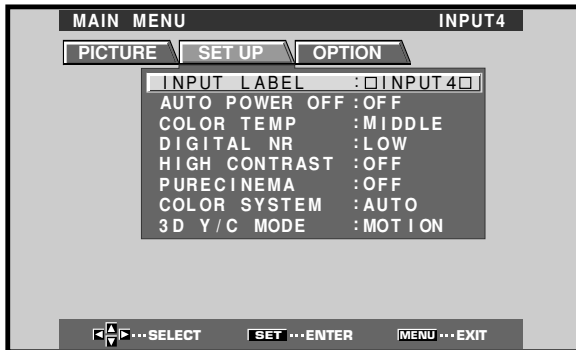
- Set this mode to "OFF" when not viewing in a bright location.

1 Press MENU to display the menu screen.

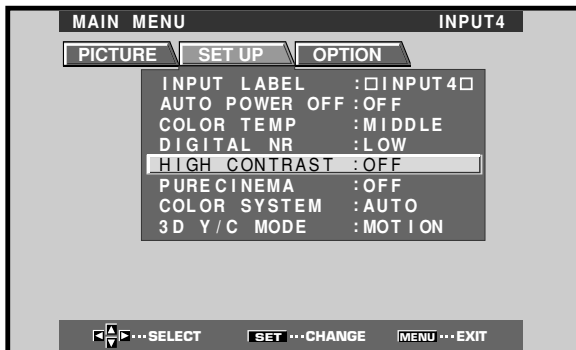
The menu screen appears.



2 Press ◀/▶ to select SET UP.



3 Press ▲/▼ to select HIGH CONTRAST.



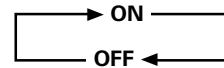
When viewing an image from INPUT1 or INPUT2, the following screen is displayed.



4 Press SET to set the mode to "ON".

"OFF" is set when this unit is shipped from the factory.

Each time SET is pressed, the settings change in the following order.



5 When the setup is finished, press MENU to exit the menu screen.

Note

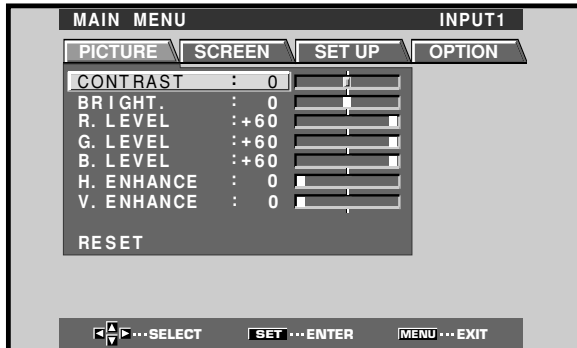
The HIGH CONTRAST setting is supported only when selecting a video input signal from a connected video component. This setting must be made independently for each input (INPUT 1 - INPUT 4) used.

AUTO FUNCTION

The plasma display is equipped with an AUTO FUNCTION detection function; when a signal is detected at the selected input, the function selector automatically switches to that input.

1 Press MENU;

The onscreen menu will be displayed.



2 Press ◀/▶ to select OPTION.



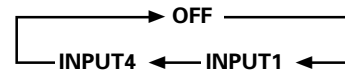
3 Press ▲/▼ to select AUTO FUNCTION.



4 Press SET to select INPUT1 or INPUT4.

The factory default setting is OFF.

Each time **SET** is pressed the selector function switches alternately as shown:



- When OFF is selected, AUTO FUNCTION is disabled.
- After INPUT 1 or INPUT 4 is selected, if a signal is detected to the selected input jack, the input function will automatically switch to the selected input. Thereafter, the input will not change even if the INPUT button is pressed on the remote control unit or display.

Once the function has switched to the selected input by operation of the AUTO FUNCTION facility, if the input signal is no longer detected at the selected input jack, the function will automatically switch back to the original input source used before the AUTO FUNCTION facility was enabled.

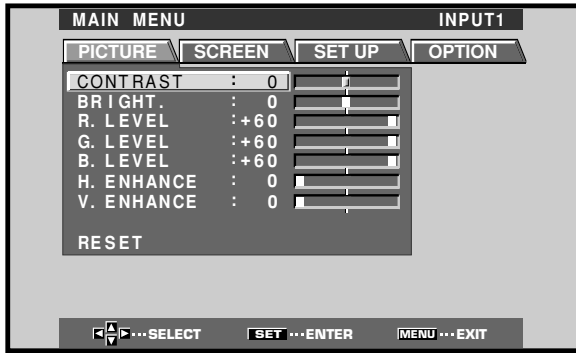
5 Following completion of settings, press MENU again to return the display to its normal screen.

Audio Output (AUDIO OUT)

The signal level produced at the AUDIO OUT jack can be set to FIXED or VARIABLE (linked to the VOLUME) as desired.

1 Press MENU;

The onscreen menu will be displayed.



2 Press ◀/▶ to select OPTION.



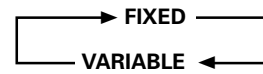
3 Press ▲/▼ to select AUDIO OUT.



4 Press SET to select the desired audio level setting.

The factory default setting is FIXED.

Each time **SET** is pressed, the function alternates as shown:



- When FIXED is selected, the audio output volume will not change, even if the setting of the display's VOLUME function is later changed.
- When VARIABLE is selected, the level of the output signal changes in accordance with the setting of the VOLUME function.

5 Following completion of settings, press MENU to return to normal screen display.

Note

The AUDIO OUT setting affects all input sources (INPUT1-5).

Specifications

General

External dimensions 243.8 (W) x 23.6 (H) x 144 (D) mm
9-5/8 (W) x 29/32 (H) x 5-11/16 (D) in.
Weight 1.2 kg (2 lbs. 1 oz)
Operating temperature range 0 to 40 °C (32 to 104 °F)

Input/output

Video

INPUT 3

Input

S terminal (Mini DIN 4 pin)
• Y/C separate video signal
Y ... 1 V_{p-p}/75 Ω/negative sync.
C ... 0.286 V_{p-p}/75 Ω (NTSC)
0.3 V_{p-p}/75 Ω (PAL)

INPUT 4

Input

BNC jack
• Composite video signal
1 V_{p-p}/75 Ω/negative sync.

Output

BNC jack
75 Ω /with buffer

INPUT 5

Input

DVI-D 24-pin connector
• Digital RGB signal (DVI compliant TMDS signal)
* INPUT 5 supports Microsoft "Plug & Play" (VESA DDC 2B) standards.

Audio

Input

AUDIO INPUT (for INPUT 3)
Pin jack (x2)
L/R ... 500mV_{rms}/more than 10 kΩ

AUDIO INPUT (for INPUT 4)
Pin jack (x2)
L/R ... 500mV_{rms}/more than 10 kΩ

Accessories

Label for remote control unit 1
BNC/Pin conversion adaptor 1
Connector indicator label 1
Operating Instructions 1
Warranty 1

- Due to improvements, specifications and design are subject to change without notice.

Supplement 1

Video signal compatibility table (INPUT1, INPUT2)

Refresh rate		Signal format	Screen size				Remarks
Vertical Fv (Hz)	Horizontal Fh (kHz)		4:3	FULL	ZOOM	WIDE	
50	15.625	Component	○	○	○	○	625i (575i)/SDTV
		RGB	○	○	○	○	
	28.1	Component		○			1125i (1080i)/HDTV
		RGB		○			
	31.25	Component	○	○	○	○	625p (575p)/SDTV
		RGB	○	○	○	○	
60	15.734	Component	○	○	○	○	525i (480i)/SDTV
		RGB	○	○	○	○	
	31.5	Component	○	○	○	○	525p (480p)/SDTV
		RGB	○	○	○	○	
	33.75	Component		○			1125i (1080i)/HDTV
		RGB		○			
	45.0	Component		○			750p (720p)/HDTV
		RGB		○			
	67.5	Component		○			1125p (1080p)/HDTV
		RGB		○			

Supplement 2

PC signal compatibility table (INPUT5)*

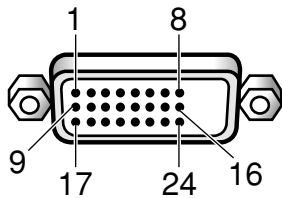
Resolution (Dot x Line)	Refresh rate		Screen size (Dot x line)				Remarks
	Vertical	Horizontal	DOT BY DOT	4:3	FULL	PARTIAL	
640x480	60Hz	31.5kHz	◎ 640x480	○ 1024x768	○ 1280x768		
800 x600	56Hz	35.1kHz	◎ 800x600	○ 1024x768	○ 1280x768		
	60Hz	37.9kHz	↑	↑	↑		
852x480	60Hz	31.7kHz	◎ 852x480		○ 1280x768		
1024x768	60Hz	48.4kHz	◎ 1024x768		○ 1280x768		
1152x864	60Hz	53.7kHz		△ 1024x768	△ 1280x768		
1280x768	56Hz	45.1kHz	◎ 1280x768				
	60Hz	48.4kHz	↑				
1280x960	60Hz	60.0kHz		△ 1024x768	△ 1280x768		
1280x1024	60Hz	64.0kHz		△ 960x768	△ 1280x768	◎ 1280x768	

◎ : Optimal picture. Adjustment of picture position, refresh rate, phase etc., may be necessary. : Not available.
 ○ : Picture will be enlarged but some fine detail will be hard to see.
 △ : Simple reproduction. Fine detail will not be reproduced. Screen size will be displayed as “~ (TYPE)”.

* Only supported when combined with PDP-503CMX or PDP-503MXE.

Supplement 3

INPUT 5 (DVI female connector) pin allocation.



Pin No.	Signal Assignment
1	T.M.D.S. Data2-
2	T.M.D.S. Data2+
3	T.M.D.S. Data2/4 Shield
4	NC (No connection)
5	NC (No connection)
6	DDC Clock
7	DDC Data
8	NC (No connection)
9	T.M.D.S. Data1-
10	T.M.D.S. Data1+
11	T.M.D.S. Data1/3 Shield
12	NC (No connection)
13	NC (No connection)
14	+5V Power
15	GND
16	Hot Plug Detect
17	T.M.D.S. Data0-
18	T.M.D.S. Data0+
19	T.M.D.S. Data0/5 Shield
20	NC (No connection)
21	NC (No connection)
22	T.M.D.S. Clock Shield
23	T.M.D.S. Clock+
24	T.M.D.S. Clock-

Power Management is a registered trademark of Sun Microsystems Inc.
 TMDS is a registered trademark of Silicon Image Inc.
 Apple and Macintosh are registered trademarks of Apple Computer, Inc.
 Microsoft is a registered trademark of Microsoft Corporation.
 VGA and XGA are registered trademarks of International Business Machines Co., Inc.
 VESA and DDC are registered trademarks of Video Electronics Standards Association.

Explanation of Terms

Aspect ratio

The TV screen's width to height ratio is referred to as its aspect ratio. The aspect ratio on standard TVs is 4:3 and on wide TVs or High Definition TVs it is 16:9.

S jack (S VIDEO jack)

This jack separates and transmits the video signal as two signals; the luminance (Y) signal and the color(C) signal. Because of this, picture reproduction is superior to that obtained at the composite input/output jacks.

S-video signal

The video signal is composed of two signals; the chroma signal (color signal) which reproduces color and the luminance signal which reproduces light and darkness. With standard video components, these two signals are combined into one and are handled as a video signal referred to as the "composite signal". The S-video signal, however, is a signal that handles these two signals separately. Because they are not combined as in the composite video signal, the high quality of both signals can be retained.

Component video signal

General term for video signal format composed of the Y.Cb.Cr, Y.Pb.Pr and Y.B-Y.R-Y luminance signal + color signal. The component video signal is sometimes simply called the "color difference signal".

G ON SYNC

This indicates a video signal in the form of a synchronization signal added to the G (GREEN) signal of the R.G.B signal.

VGA

VGA is short for "Video Graphics Array". Generally this indicates a 640 dot x 480 line resolution.

XGA

General term for "eXtended Graphics Array". Generally this indicates a 1024 dot x 768 line resolution.

DVI

An acronym for Digital Visual Interface, an interface standard proposed by the Digital Display Working Group (DDWG) for digital displays.

Published by Pioneer Corporation.
 Copyright © 2001 Pioneer Corporation.
 All rights reserved.

Free Manuals Download Website

<http://myh66.com>

<http://usermanuals.us>

<http://www.somanuals.com>

<http://www.4manuals.cc>

<http://www.manual-lib.com>

<http://www.404manual.com>

<http://www.luxmanual.com>

<http://aubethermostatmanual.com>

Golf course search by state

<http://golfingnear.com>

Email search by domain

<http://emailbydomain.com>

Auto manuals search

<http://auto.somanuals.com>

TV manuals search

<http://tv.somanuals.com>