

Sunbeam

Pro Steam II

Instruction Booklet

This book covers the use and care of the following Sunbeam Irons:

SR3100 Pro Steam II 3100 Polished shot and spray iron

SR3200 Pro Steam II 3200 Teflon® shot and spray iron

Please read these instructions carefully
and retain for future reference.



Contents

Sunbeam's Safety Precautions	3
Features of your Pro Steam II Iron	4
Using your Pro Steam II Iron	6
Care and Cleaning	7

Important instructions – retain for future use.

تأكد من تفهم احتياطات السلامة المذكورة اعلاه

請務必理解上述的安全預防措施。

Assurez-vous que les précautions ci-dessus relatives à la sécurité sont bien comprises

Versichern Sie sich daß die obenstehenden Sicherheitsmaßnahmen Verstanden werden

Βεβαιώνετε πως οι παραπάνω προφυλάξεις ασφαλείας γίνονται κατανοητές

Pastikan bahwa tindakan-tindakan keselamatan seperti di atas dimengerti anda

Accertatevi che le suddette norme di sicurezza siano comprese a dovere

上記の注意事項をよくお読みになり、安全を御確認ください

Уверете се дека погоре споменатите мерки на претпазливост се добро разбрани

Asegúrese de que las precauciones de seguridad precedentes sean bien comprendidas

کاری بکنید کہ احتیاط‌های بالا حتماً درک بشوند

ต้องแน่ใจว่า ข้อควรระวังเรื่องความปลอดภัยข้างต้น เป็นที่เข้าใจกันดี

Yukarda belirtilen güvenlik önlemlerinin anlaşılığundan emin olunuz

Xin kiểm chắc rằng những biện pháp làm an toàn kể trên được hiểu rõ

Sunbeam's Safety Precautions

SAFETY PRECAUTIONS FOR YOUR IRON

- Do not leave a hot iron within reach of children. If they come into contact with a hot iron it could lead to serious burns.
- Iron only on an ironing board.
- An iron takes approximately 30 minutes to cool down. Allow the iron to cool completely before storing.
- Do not wind the cord around the soleplate while the iron is still hot.
- Do not leave the iron unattended while it is plugged into the power outlet.
- Always unplug the iron from the power outlet before filling or emptying the water tank.

Sunbeam are very safety conscious when designing and manufacturing consumer products, but it is essential that the product user also exercise care when using an electrical appliance. Listed below are precautions which are essential for the safe use of an electrical appliance:

- Read carefully and save all the instructions provided with an appliance.
- Always turn the power off at the power outlet before you insert or remove a plug. Remove by grasping the plug – do not pull on the cord.
- Turn the power off and remove the plug when the appliance is not in use and before cleaning.
- Do not use your appliance with an extension cord unless this cord has been checked and tested by a qualified technician or service person.
- Always use your appliance from a power outlet of the voltage (A.C. only) marked on the appliance.
- This appliance is not intended for use by young children or infirm persons unless they have been adequately supervised by a responsible adult to ensure that they can use the appliance safely.
- Never leave an appliance unattended while in use.
- Young children should be supervised to ensure that they do not play with the appliance.
- Do not use an appliance for any purpose other than its intended use.
- Do not place an appliance on or near a hot gas flame, electric element or on a heated oven. Do not place on top of any other appliance.
- Do not let the power cord of an appliance hang over the edge of a table or bench top or touch any hot surface.
- For safety reasons and to avoid maintenance by unskilled persons, some appliances are 'sealed' using tamperproof screws. Such appliances should always be returned to the nearest Sunbeam Appointed Service Centre for adjustment or repair if required.
- Do not operate any electrical appliance with a damaged cord or after the appliance has been dropped or damaged in any manner. If damage is suspected, return the appliance to the nearest Sunbeam Appointed Service Centre for examination, repair or adjustment.
- For additional protection, Sunbeam recommend the use of a residual current device (RCD) with a tripping current not exceeding 30mA in the electrical circuit supplying power to your appliances.
- Do not immerse the appliance in water or any other liquid unless recommended.

If you have any concerns regarding the performance and use of your appliance, please visit www.sunbeam.com.au or contact the Sunbeam Consumer Service Line. Ensure the above safety precautions are understood.

Powerful shot of steam

Pressing the shot of steam button instantly produces a powerful shot of steam to remove stubborn wrinkles.

Vertical shot of steam

Pressing the shot of steam button with the iron in an upright position produces a vertical shot of steam, which is ideal for steaming curtains and suits, and removing creases from delicate fabrics.

Variable steam

The steam dial allows you to select the desired steam output for each garment. Alternatively, select the DRY setting to iron without steam.

Removable steam valve

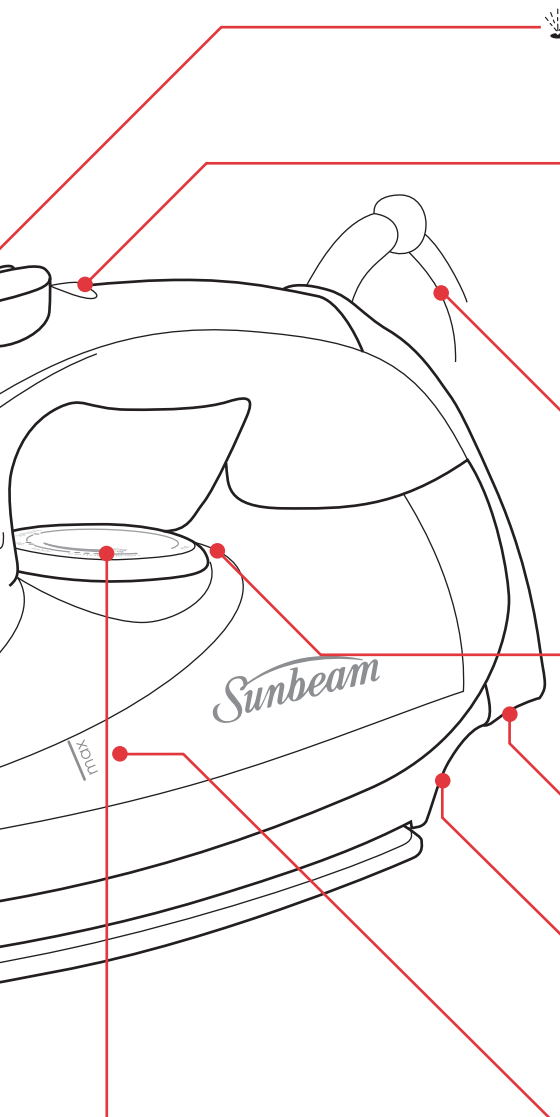
The steam valve is connected to the steam dial and is removable to allow for easy cleaning. Cleaning it regularly removes scale build-up that can affect its performance. For instructions on how to clean the steam valve see the Care and Cleaning section on page 7.

Water inlet cover

The water inlet allows for easy filling, without bubbling or spilling.

Full length button groove

For ironing around buttons.



Fine spray mist

Pressing the spray button provides a fine mist spray to dampen hard-to-iron fabrics.

Thermostat light

Illuminates to indicate that the iron is heating and goes out when it has reached the temperature selected on the temperature dial. The thermostat light cycles on and off during ironing as the iron maintains the selected temperature.

Long cord with swivel cord outlet

The swivel cord outlet is ideal for left or right hand use, and provides greater versatility and ease of movement when ironing. The flexible grommet protects the cord from fraying.

Temperature indicator

Align the desired setting with the temperature indicator.

Stable heel rest

Large heel rest keeps the iron stable on the ironing board.

Cord wrap facility

The built-in cord wrap facility allows you to wind the cord around the heel for neat and tidy storage of the cord when the iron is not in use.

Maximum water level indicator

Indicates the maximum water level.

Temperature dial

Allows you to select the desired temperature for each garment. The adjustable temperature dial also indicates the amount of steam recommended for use on each temperature setting.

Using your Sunbeam Pro Steam II Iron

Before first use

Remove any adhesive stickers, plastic covers or cardboard sleeves from the soleplate. Ensure that all adhesive is removed by rubbing the soleplate with a cloth dampened with methylated spirits.

Fill the water tank and empty the water. This will rinse out any foreign particles remaining in the water tank from the manufacturing process.

NOTE: When turned on for the first time, your new iron may give off vapours for up to 10 minutes. This is due to the initial heating of the materials used. It is safe, not detrimental to the performance of the iron, and will not reoccur.

Filling the iron with water

Before filling the iron with water ensure the power is turned off and the plug is removed from the power outlet. The iron can be filled with water while it is hot.

1. Turn the STEAM/DRY dial to DRY.
2. Place the iron on its heel and hold it at a 45 degree angle. (Refer to figure 2 below). Open the water inlet cover.
3. Slowly pour water into the water inlet until the maximum water level is reached. Do not exceed the maximum water level indicator. Push the water inlet cover firmly to close.

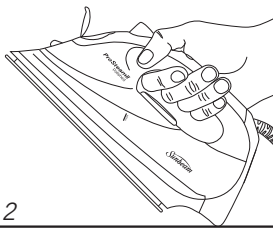


Figure 2

NOTE: The special soleplate design allows you to use tap water with your Pro Steam II iron without affecting the steam performance. However in very hard water areas, Sunbeam recommend the use of distilled water, or water which has been demineralised.

For best performance, we recommend the use of Sunbeam Water Demineraliser, available from Sunbeam Service Centres and selected retailers. This will produce up to 30 litres of demineralised water.

Do not fill the iron with fabric conditioner, starches or any other solution as these will damage the steam mechanism. Do not use contaminated water.

Using your iron

1. Insert the 3 pin plug into a 230/240 volt power outlet and turn the power on.
2. Turn the temperature dial to the desired setting by aligning the setting on the dial with the temperature indicator. The thermostat light (positioned on the top of the handle) will illuminate to indicate that the iron is heating to the selected temperature. When the thermostat light goes out the iron has reached the selected temperature and is ready to iron.

NOTE: When the temperature dial is changed from a high setting to a lower temperature setting during ironing, the thermostat light will go out immediately. This indicates that the iron is cooling to the selected temperature. To ensure that the iron has reached the selected temperature and is not too hot, wait until the thermostat light comes on again and then goes out before ironing.

Dry ironing

Follow steps 1 and 2 above.

3. Select DRY on the STEAM/DRY dial. This will cut off the steam flow if there is water in the tank.

Steam ironing

Follow steps 1 and 2 above.

NOTE: When steam ironing, ensure that the temperature dial is set to any temperature within the steam band and that the tank is at least $\frac{1}{4}$ full of water.

3. Turn the STEAM/DRY dial to the desired steam setting.

Using your Sunbeam Pro Steam II Iron (continued)

Using the shot of steam

The shot of steam can be used whether DRY or STEAM ironing when the temperature dial is set to any temperature above the two dot (••) setting.

1. Ensure the tank is at least $\frac{1}{4}$ full of water.
2. Select the desired temperature and wait until the thermostat light goes out.
3. Press the shot of steam button several times with the iron on the soleplate to prime the pump.

NOTE: If the tank has run dry, it may be necessary to re-prime the pump after filling the iron with water.

Using the spray mist

The spray mist can be used whether dry or steam ironing to pre-dampen hard to iron fabrics.

1. Ensure the tank is at least $\frac{1}{4}$ full of water.
2. Press the spray button during ironing to release a fine mist from the spray nozzle.

After each use

1. Turn the STEAM/DRY dial to DRY.
2. Turn the power off and remove the plug from the power outlet.
3. Empty any remaining water from the water tank.
4. Allow the iron to cool before winding the cord around the built-in cord wrap.

Storage

Always store the iron on its heel rest.



NOTE: Do not store the iron with the soleplate facing down, or in the carton.

Cleaning

To clean the exterior of your iron, wipe over with a damp soft cloth and wipe dry.

Caution: Do not use harsh abrasives, chemical cleaners or solvents to clean the exterior of your iron as these will damage the surface.

Cleaning the removable steam valve

To remove the steam valve, turn the STEAM/DRY dial to (•), so that the steam valve pops up. Gently scrub the tip of the valve with a steel wool soap pad moistened in warm water. Rinse and dry with a clean cloth. Replace the steam valve and turn clockwise to lock into position.

To clean the steam holes

To remove build up from the steam holes which may affect steam performance, use a cotton wool tip moistened in methylated spirits.

Cleaning the Teflon® Select non-stick soleplate (SR3200)

The non-stick coating reduces sticking of fabrics and starches to the soleplate. Do not iron over sharp objects such as buttons, studs and zippers, as these will scratch the surface.

Wipe the soleplate with a damp soft cloth after each use. If polyester has burnt to the soleplate, iron a damp cotton cloth while hot.

Caution: Do not use scouring pads, abrasives or harsh cleaners to clean your Teflon® Select non-stick soleplate, as these will scratch and damage the surface.

Cleaning the Polished Aluminium soleplate (SR3100)

Rub gently with a stainless steel soap pad moistened in warm water. Wipe dry.

The Sunbeam logo is written in a white, elegant cursive font on a red rectangular background.

Consumer Hotline

Australia

1800 025 059

New Zealand

0800 786 232

www.sunbeam.com.au

 is a registered Trademark of Sunbeam Corporation Limited. ABN 45 000 006 771.

© Sunbeam Corporation Limited 2005.

'Sunbeam' and 'Pro Steam' are registered trademarks of Sunbeam Corporation. Teflon is a registered trademark of DuPont. Made in China to Sunbeam's specification. Due to minor changes in design or otherwise, the product may differ from the one shown in this leaflet. Backed by Sunbeam's 2 Year Replacement Guarantee and National Service Network.

© Copyright. **SUNBEAM CORPORATION LIMITED 2005.**
ABN 45 000 006 771

Sunbeam Corporation is a division of GUD Holdings Ltd.
For more information or advice on this or any other Sunbeam appliance, visit www.sunbeam.com.au or contact the Sunbeam Consumer Service Line.

Australia 1800 025 059

New Zealand 0800 786 232

09/05

Free Manuals Download Website

<http://myh66.com>

<http://usermanuals.us>

<http://www.somanuals.com>

<http://www.4manuals.cc>

<http://www.manual-lib.com>

<http://www.404manual.com>

<http://www.luxmanual.com>

<http://aubethermostatmanual.com>

Golf course search by state

<http://golfingnear.com>

Email search by domain

<http://emailbydomain.com>

Auto manuals search

<http://auto.somanuals.com>

TV manuals search

<http://tv.somanuals.com>