

SONY®

User guide

Stereo Bluetooth™ Headset
SBH20

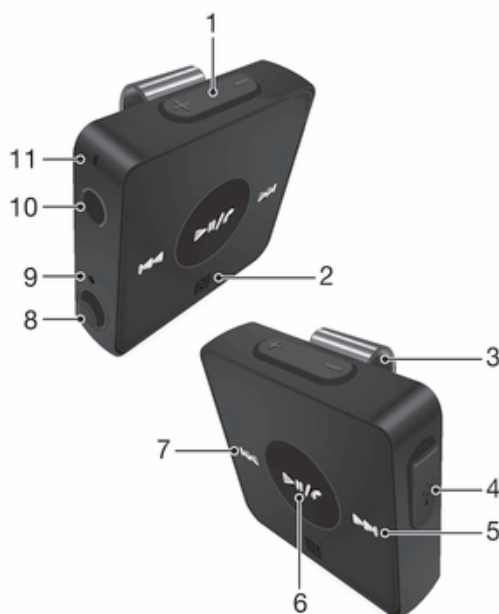
Contents

Introduction.....	3
Accessory overview.....	4
Basics.....	5
Charging the battery.....	5
Turning on the headset.....	5
Pairing the headset with your phone.....	5
Adjusting the volume.....	6
Resetting the headset.....	6
Wearing instruction.....	7
Call handling.....	8
Listening to music.....	9
Multipoint technology.....	10
Troubleshooting.....	11
I cannot answer a second call.....	11
Music does not play in the headset.....	11
The headset turns off automatically.....	11
Unexpected behaviour.....	11
No connection to the phone.....	11
Legal information.....	12
Declaration of Conformity for SBH20	13

Introduction

With the **Stereo Bluetooth™ Headset SBH20** you can control incoming and outgoing phone calls while you listen to music in stereo from your phone or from another device. Such a device must support Bluetooth™, for example, a computer or a portable music player. During a call, the music pauses automatically and starts playing again when the call ends.

Accessory overview



1. Volume controls	Adjust the volume.
2. NFC detection area	Swipe this area during NFC transactions.
3. Clip	Attach the accessory to your clothing.
4. Micro USB port	Insert the charger cable to charge the battery.
5. Next key	Play the next track.
6. Music key/Call key	Play/Pause the current media file. Answer incoming calls. Press and hold down to reject incoming calls.
7. Previous key	Play the previous track.
8. Power switch	Move the switch to turn the power on or off.
9. Notification light	Red light: battery level below 10% Green light: battery level above 90% Flashing orange light: battery level 10% - 90%. Flashing blue light indicates headset is visible to other Bluetooth™ devices. Flashing purple light indicates an incoming call.
10. Headset jack	3.5 mm input for wired headphones.
11. Microphone	Place within range of your voice.

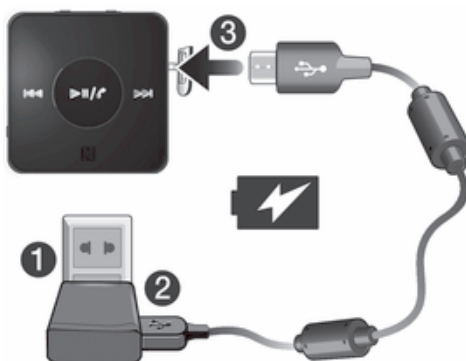
💡 Compatibility information for your accessory are available at www.sonymobile.com/support.

Basics

Charging the battery

Before using the **Stereo Bluetooth™ Headset SBH20** for the first time, you need to charge the headset for approximately 2.5 hours. Sony chargers are recommended.

To charge the battery



- 1 Plug the charger into a power outlet.
- 2 Plug one end of the USB cable into the charger (or into the USB port of a computer).
- 3 Plug the other end of the cable into the Micro USB port on your **Stereo Bluetooth™ Headset SBH20** device.

💡 Notification light will display the charging status after you turn off the headset.

Turning on the headset

To turn on the headset




- Move the switch upwards.

Pairing the headset with your phone

You can pair the headset with your phone manually or using NFC. After successful pairing, the headset connects automatically to the phone as soon as the headset is turned on and within range.

To manually pair the headset with your phone



- 1 Make sure your phone has the Bluetooth™ function turned on.
- 2 Turn on the headset.
- 3 **Headset:** Press and hold  until the notification light flashes blue.
- 4 **Phone:** Scan for Bluetooth™ devices, then select **Stereo Bluetooth™ Headset SBH20** in the available devices list.
- 5 Follow the pairing instructions that appear on your phone. If a passcode is required, enter 0000.


To pair the headset with your phone using NFC



- 1 Make sure that your phone has the NFC function turned on and that the phone screen is active.
- 2 Turn on the headset.
- 3 Place your phone over the headset so that the NFC detection area of each device touches the other.
- 4 Follow the pairing instructions that appear on your phone. If a passcode is required, enter 0000.

Adjusting the volume

To change the call or music volume

- During a call, or when listening to music, press the Volume control key  up or down.

Resetting the headset

Reset the headset if it behaves unexpectedly. Resetting the headset removes all information about paired devices.

To reset the headset

- Turn off the headset, then turn on the headset again to perform a restart.

Wearing instruction



You can rotate the clip left or right for a more comfortable fit.

To get the best performance from a Bluetooth™ headset when using it outdoors, it is recommended that you carry your phone on the same side of your body as the headset unit.

Call handling


To answer a call with the headset

- When you hear an incoming call signal, press .


To end a call

- During an ongoing call, press .

To reject a call

- When you hear an incoming call signal, press and hold down .

To mute the microphone during a call

- Press and hold down .

To answer a second call

- When you hear an incoming call signal during an ongoing call, press . The ongoing call is put on hold.

To reject a second call



- When you hear an incoming call signal during an ongoing call, press and hold down .

To switch between two calls



- Press  or .

Listening to music

To listen to music

- 1 Open the media player in your phone.
- 2 Press  to play the music on the headset. To pause the music, press  again.

To move between tracks

- When you listen to music, press  or .

To move within a track

- Press and hold down  or  until you reach the desired position.

Multipoint technology

Use Multipoint technology to connect your headset to two Bluetooth™ devices at the same time. For example, if you connect your headset with two phones, you can receive calls from both phones without having to disconnect and reconnect.

If you prefer that your headset connects to just one Bluetooth™ device at any given time, you can use Singlepoint mode instead. Before pairing your headset with a new device in Singlepoint mode, make sure that you disconnect it from other devices.

- ! Multipoint mode consumes more battery power than Singlepoint mode.

To switch between Multipoint mode and Singlepoint mode

- 1 Make sure that the headset is turned off.
 - 2 Put the headphones in your ears.
 - 3 To enter Multipoint mode, press and hold down the volume up key while turning on the headset. After Multipoint mode is activated, you will hear two beeps.
 - 4 To enter Singlepoint mode, press and hold down the volume down key while turning on the headset. After Singlepoint mode is activated, you will hear one beep.
- 💡 In order to connect to both paired devices in Multipoint mode, you need to restart the headset.

Troubleshooting

I cannot answer a second call

- Make sure your phone supports the Bluetooth handsfree profile.
- Make sure the correct calling device is selected.

Music does not play in the headset

- Make sure your phone or other device is paired with the headset. You may have to restart the media player and select to use the headset.
- Make sure the correct music source is selected.

The headset turns off automatically

- The battery level is too low. The headset beeps approximately 10 minutes before it turns off. Charge the battery.

Unexpected behaviour

- Restart the headset.

No connection to the phone

- Make sure the headset is charged and within range of the phone. A maximum distance of 10 metres (33 feet), with no solid objects in between, is recommended. Check the Bluetooth settings in the phone, and reset if necessary. Pair the headset with the phone again.

Legal information



Sony SBH20

Prior to use, please read the *Important information* leaflet separately provided.

This User guide is published by Sony Mobile Communications AB or its local affiliated company, without any warranty. Improvements and changes to this User guide necessitated by typographical errors, inaccuracies of current information, or improvements to programs and/or equipment, may be made by Sony Mobile Communications AB at any time and without notice. Such changes will, however, be incorporated into new editions of this User guide.

All rights reserved.

©Sony Mobile Communications AB, 2012

Publication number: 1271-8369.3

Interoperability and compatibility among Bluetooth™ devices varies. Device generally supports products utilizing Bluetooth spec. 1.2 or higher, and Headset or Handsfree profile.

Sony is the trademark or registered trademark of Sony Corporation. Bluetooth is the trademark of the Bluetooth (SIG) Inc. and is used under license. All other marks are the property of their respective owners. All rights reserved.

All product and company names mentioned herein are the trademarks or registered trademarks of their respective owners. Any rights not expressly granted herein are reserved. All other trademarks are property of their respective owners.

Visit www.sonymobile.com for more information.

All illustrations are for illustration only and may not accurately depict the actual accessory.

Declaration of Conformity for SBH20

We, Sony Mobile Communications AB of

Nya Vattentornet

SE-221 88 Lund, Sweden

declare under our sole responsibility that our product

Sony type RD-0010

and in combination with our accessories, to which this declaration relates is in conformity with the appropriate standards **EN 300 328:V1.7.1, EN 301 489-7:V1.3.1, EN 301 489-17:V2.1.1 and EN 60 950-1:2006 +A11:2009+A1:2010+A12:2011** following the provisions of, Radio Equipment and Telecommunication Terminal Equipment directive **1999/5/EC**.

Lund, December 2012

CE 0682



Pär Thuresson,
Quality Officer, VP, Quality & Customer Services

We fulfil the requirements of the R&TTE Directive (1999/5/EC).

FCC Statement

This device complies with Part 15 of the FCC rules. Operation is subject to the following two conditions: (1) This device may not cause harmful interference, and (2) This device must accept any interference received, including interference that may cause undesired operation.



Any change or modification not expressly approved by Sony may void the user's authority to operate the equipment.

This equipment has been tested and found to comply with the limits for a Class B digital device, pursuant to Part 15 of the FCC Rules. These limits are designed to provide reasonable protection against harmful interference in a residential installation. This equipment generates, uses and can radiate radio frequency energy and, if not installed and used in accordance with the instructions, may cause harmful interference to radio communications. However, there is no guarantee that interference will not occur in a particular installation.

If this equipment does cause harmful interference to radio or television reception, which can be determined by turning the equipment off and on, the user is encouraged to try to correct the interference by one or more of the following measures:

- Reorient or relocate the receiving antenna.
- Increase the separation between the equipment and receiver.
- Connect the equipment into an outlet on a circuit different from that to which the receiver is connected.
- Consult the dealer or an experienced radio/TV technician for help.

Industry Canada Statement

This device complies with RSS-210 of Industry Canada.

Operation is subject to the following two conditions: (1) this device may not cause interference, and (2) this device must accept any interference, including interference that may cause undesired operation of the device. This Class B digital apparatus complies with Canadian ICES-003.

Cet appareil numérique de la classe B est conforme à la norme NMB-003 du Canada.

Avis d'industrie Canada

Le présent appareil est conforme aux CNR d'Industrie Canada applicables aux appareils radio exempts de licence.

L'exploitation est autorisée aux deux conditions suivantes: (1) l'appareil ne doit pas produire de brouillage, et, (2) l'utilisateur de l'appareil doit accepter tout brouillage radioélectrique subi, même si le brouillage est susceptible d'en compromettre le fonctionnement.

Free Manuals Download Website

<http://myh66.com>

<http://usermanuals.us>

<http://www.somanuals.com>

<http://www.4manuals.cc>

<http://www.manual-lib.com>

<http://www.404manual.com>

<http://www.luxmanual.com>

<http://aubethermostatmanual.com>

Golf course search by state

<http://golfingnear.com>

Email search by domain

<http://emailbydomain.com>

Auto manuals search

<http://auto.somanuals.com>

TV manuals search

<http://tv.somanuals.com>