

**SHARP**®

AR  
8000



*F O C U S   o n   p o w e r*

*Digital*  
**iMAGER**™  
Advanced Document System

# AR-800 Imager highlights

- 80 ppm Copy/Print Speed
- Maximum Monthly Volume:  
440,000 Copies
- Optional Advanced Finishing that  
includes Hole Punch, Saddle-Stitch  
and Center-Folding
- 600 x 2400 dpi Resolution  
@ Engine Speed
- 3.6 Second First Time Copy
- Standard 32 MB Copier Memory  
with 3.2 GB Hard Drive
- Modular Service Kits  
(technician replaceable)
- 60-Sheet RADF  
(letter-size originals)
- 100-Sheet Bypass Tray  
(accepts 90 lb. index)
- Three 500-Sheet Paper  
Drawers plus 4,000-Sheet  
LCT (5,600 sheets standard)
- 25-400% Zoom Range  
(1% increments)
- 7-Minute Warm-Up Time

AR  
800



*With our fast print speed, the Sharp AR-800 Imager delivers the performance that busy offices and workgroups require.*

AR 800

## Power. Speed. Performance.

*You need more and more just to keep pace with today's competitive market.*

*That's why Sharp introduced the new AR-800 Imager Advanced Digital*

*Document System. This ultra-fast workhorse delivers a whole new level of productivity*

*to the workplace. With quality, high speed output, sophisticated yet easy-to-use features,*

*and versatile modular options, you can easily meet the demands of today's marketplace—*

*and add capabilities as your business grows. And with Sharp's award-winning reliability*

*and superior dealer service, you can depend on proven performance day after day—*

*so you can focus on your business. Sharp's new AR-800 Imager delivers powerful*

*productivity and efficiency—all at an exceptional value.*

power

# speed and performance

## FOCUS on productivity.

Designed to meet the demands of high-volume environments, the new AR-800 Imager has the power you need to handle even the largest projects with ease. With a lightning-fast 80 page-per-minute print speed and 5,600-sheet paper capacity, you can count on this versatile workhorse for fast, reliable output.

**HIGHLIGHT** • 5,600 total online paper capacity (standard)

**HIGHLIGHT** • 3.6 second first copy time

- 80 ppm print speed
- 32 MB memory
- 3.2 GB hard drive
- 100-Sheet Bypass Tray can accept up to 90 lb. stock
- 60-sheet Reversing Automatic Document Feeder
- High monthly copy volume of 440,000 sheets

## FOCUS on quality.

With state-of-the-art laser technology, the AR-800 Imager has one of the highest print resolutions in the industry, producing documents with exceptional quality and detail. Plus, the AR-800 Imager automatically monitors the toner density...for consistent image quality from the first copy to the last.

**HIGHLIGHT** • Razor-sharp 2400 dpi resolution (with smoothing technology)

- Scan once, print many technology
- 256 level grayscale
- Photo Mode
- Automatic Exposure Control
- Automatic Process Control



*Three 500-sheet adjustable paper cassettes provide paper size flexibility for true versatility.*



*The 4,000-sheet large capacity tray brings the paper capacity of the AR-800 Imager to an impressive 5,600 sheets.*



*Unique modular service kits minimize downtime, enhance efficiency and protect your investment.*



# user-friendly control panel



Despite its advanced features, the AR-800 Imager is remarkably easy to use. A touch-screen LCD display guides users through features and options with simple prompts and a convenient "HELP" key. A Graphic Service Guidance System provides step by step instructions for replacing toner and removing misfeeds, minimizing system downtime.

## FOCUS on efficiency.

The AR-800 Imager offers new functionality to meet busy departmental needs. With Automatic Duplexing you can make double-sided copies from single-sided originals, saving time and paper. With the ability to scan up to 240 letter-size originals with the Job Build mode, the AR-800 Imager can handle even the largest jobs with ease. With the Job Interrupt feature, you can interrupt the current job to make a copy, so you can quickly get back to work. The AR-800 Imager remembers the point of interruption and retains the settings from the previous job.

Engineered to keep your Imager running at peak performance, the AR-800 features modular service kits. These technician replaceable modules minimize downtime, saving time and protecting your investment.

Other standard features include:

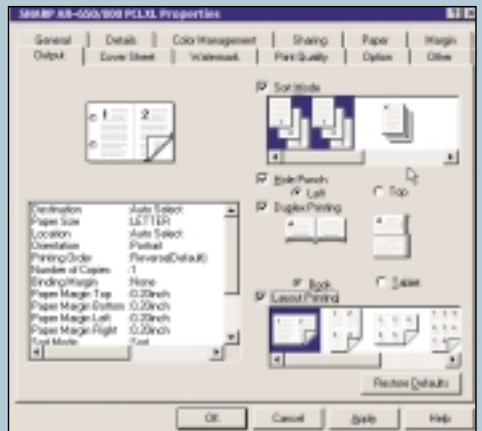
- 120 Access Codes
- Annotation
- Auto Cassette Change
- Auto Job Start
- Automatic Magnification Selection
- Automatic Paper Selection
- Automatic Sort Mode
- Text, Photo, Text/Photo Mode
- Touch Screen Control Panel
- Trimming/Masking
- Page Numbering
- Paper Size Indicators
- Paper Volume Indicators
- Sheet Insertion Mode
- Weekly Timer
- X-Y Zoom
- Magazine Sort (Booklet Making Mode)
- 2-in-1/4-in-1/8-in-1
- Job Memory (4)
- Automatic Sort Mode
- Automatic Tray Switching
- Dual Page Copying
- Job Memory
- Job Preset
- Mixed Originals Mode
- Page Numbering

## FOCUS on connectivity.

The AR-800 Imager can also adapt to your changing business needs. When you're ready, simply add the optional print controller to transform the AR-800 Imager from a powerful stand alone copier into a networkable printer. Compatible with multiple operating systems and protocols, the easy-to-use desktop printing and document management software will streamline your workflow like never before. With just a few keystrokes you can access print functions, finishing options—even track jobs—right from the convenience of your desktop.

### print controller features

- Macintosh® & UNIX® (Sun®, HP®) Client Support
- Motorola® 200 MHz PowerPC Processor
- PCL5e™, PCLXL, Postscript Level II emulation.
- Multi-Position Stapling plus Saddle-Stitch Control (with AR-FN9 finisher)
- N-Up Printing
- Automatic Duplexing (short or long edge)
- Page Enlargement/Reduction Modes
- Reverse Order Printing
- Watermark Feature
- Confidential/Secure (PIN) Printing Capability
- Automatic Language Switching
- Automatic Tray Switching
- Booklet Printing Mode
- Grouping for Tabulating Print Jobs
- Margin Shift
- RIP Once/Print many Technology
- SNMP Compliant



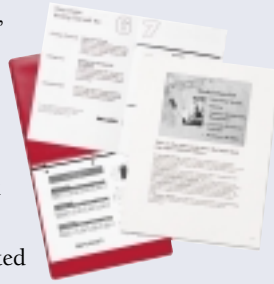
Enjoy the convenience of desktop printing with the Imager's optional print controller. Easy-to-use software allows you to select printing and finishing options in a snap.



Simple prompts allow you to select paper size, number of copies, paper orientation, order of printing and zoom ratio right from your desktop.

## FOCUS on functionality.

For professional finishing capabilities, add one of two optional finishers to the AR-800 Imager. Streamline document production with automated folding and stapling. You can even add an optional hole punch unit to either finisher for added versatility. Finished sets are conveniently separated for easy retrieval. What's more, you can easily access the AR-800 Imager's finishing features from your desktop with the optional print controller. Convenient and efficient!



# f i n i s h e r s

### AR-FN9 Saddle-Stitch Finisher

- 4-Position Stapling
- 3 Bins
- Binds Up to 15 Pages on 20 lb. Stock
- Center Folding
- Letter and Ledger Output
- 1000-Sheet Capacity—2 Top Bins
- 500-Sheet Capacity—Bottom Tray (sort/staple only)
- 50-Sheet Stapling Capacity (letter size)
- Saddle-Stitch—Bottom Tray Only

### AR-FN8 Two-Tray Finisher

- 3-Position Stapling
- 2 Bins
- 1000-Sheet Capacity per Bin
- 50-Sheet Stapling Capacity (letter size)



Saddle-Stitch Finisher  
(AR-FN9)



Two-Tray Finisher  
(AR-FN8)



Multiple pages per sheet



Auto stapler



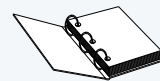
Make pamphlets easily



Each job neatly separated



Automated page editing



Two or three hole punch



Print on both sides



Saddle-stitched

# AR 800 specifications

## GENERAL SPECIFICATIONS

Type:	Console
Copy System:	4-beam Laser Electronic
Originals:	Sheets, bound document, photographs
Original Size:	Max. 11" x 17"
Copy Sizes:	Max. 11" x 17"; Min. 5.5" x 8.5"
Copying Speed:	80 ppm (8.5" x 11" at 100% ratio) 61 ppm (letter-R) 52 ppm (legal) 43 ppm (ledger)
Continuous Copy:	Max. 999
Copy Ratio:	25%-400% in 1% increments Fixed Presets: 25%, 50%, 64%, 78%, 95%, 100%, 121%, 129%, 141%, 200%, 400%, 800%
Printing Resolution:	600 x 2400 dpi (with smoothing)
Gradation:	256 levels
Duplexing:	Standard
First Copy Time:	Approx. 3.6 seconds
Warm-Up Time:	Approx. 7 minutes
Original Feed System:	Reversing Automatic Document Feeder (RADF)
Hard Drive:	3.2 GB
Memory Size:	32 MB
Document Storage Capacity:	1,000 pages (letter-size)
Copy Paper Feed:	3,500-Sheet Adjustable Paper Cassettes 4,000-Sheet Large Capacity Feeder 100-Sheet "Smart" Bypass Tray (letter-size)
Fusing System:	Heat Rollers
Developer System:	Dry Developer
Exposure System:	Moving optical source, slit exposure (stationary platen) with automatic exposure function
Light Source:	Halogen Lamp
Required Power Supply:	115 Volts, 60Hz, 20 Amp Dedicated
Power Consumption:	Maximum 2.0 kw
Dimensions:	36.3" x 29.2" x 43.7" (w x d x h)
Weight:	Approx. 550 lbs.

## EMBEDDED CONTROLLER SPECIFICATIONS

PDL Support:	PCL5e/ + PCL XL, Postscript Level II Emulation
Memory:	16 MB Standard; 48 MB max.
CPU:	PowerPC 603e 200 MHz
Client Operating System Support:	Windows® 3.1, 95, 98, 2000, NT 4.0, Macintosh® UNIX®, HP/Sun, Solaris
Network Operating System Support:	Netware® 3.x, 4.x, 4.x (NDS) Windows® 95, 98, ME, 2000, NT 4.0, UNIX®
Protocol Support:	IPX/SPX, TCP/IP, Ethertalk®, LPR/LPD, SNMP
I/O Interface:	10BaseT, 10Base5, 10Base2, 100BaseT

Print Resolution:	600 x 2400 dpi
Print Speed:	Equivalent to engine speed
Duty Cycle:	Equivalent to engine duty cycle
Paper Supply	3 x 500-Sheet Cassette, 4,000-Sheet LCT
Acceptable Paper Sizes:	Statement-R (5.5" x 8.5") to Ledger (11 x 17), 17-22 lbs; Manual feed from Stack Feed "Smart" Bypass 16-41 lbs. (90 lb. index)
Acceptable Paper:	Standard bond, overhead
Multiple Prints:	1-999
Page Orientation:	Portrait or landscape
Simplex/Duplex:	Simplex & Duplex Printing Control
Duplex Modes:	Short Edge Bind/Long Edge Bind
Finishing:	Sort/Staple, Sort & Saddle Stitch (optional finisher required)
Paper Sources:	All available sources & Stack Feed "Smart" Bypass

## AR-FN8 FINISHER SPECIFICATIONS

Copy Paper Size:	Statement to Ledger
Thickness:	Non-staple: 16-41 lbs. (90 lb. index) Staple: 17-22 lbs.
Stapling Function:	50 sheets
Power Requirements:	Supplied from copier
Dimensions:	28.2" x 23.7" x 39.9" (w x d x h)
Weight:	79 lbs

## AR-FN9 SADDLE-STITCH FINISHER SPECIFICATIONS

Copy Paper Size:	Statement to Ledger
Thickness:	Non-Staple: 16-41 lbs. (90 lb. index) Staple: 17-22 lbs.
Stapling Function:	50 sheets
Stapling Function Saddle Stitch:	15 sheets
Copy Paper Size (Saddle Stitch):	Letter, Ledger
Power Requirements:	Supplied from copier
Dimensions:	28.2" x 23.7" x 39.9" (w x d x h)
Weight:	122 lbs.

## AR-PN2B HOLE PUNCH UNIT SPECIFICATIONS

Copy Paper Size:	Letter to Ledger
Thickness:	16-41 lbs. (90 lb. index)
Hole Punch Function:	2 or 3 hole punch capability
Power Requirements:	Supplied from copier

Design and specifications are subject to change without notice. Sharp is a registered trademark of Sharp Corporation. All trademarks and registered trademarks are owned by their respective holders.

**SHARP**  
be sharp™

SHARP ELECTRONICS CORPORATION  
Network Office Systems Group  
Sharp Plaza, Mahwah, NJ 07430-2135  
1-800-BE-SHARP [www.sharppusa.com](http://www.sharppusa.com)



As an ENERGY STAR® Partner, SHARP has determined that this product meets the ENERGY STAR® guidelines for energy efficiency.

CPD-3457



## Free Manuals Download Website

<http://myh66.com>

<http://usermanuals.us>

<http://www.somanuals.com>

<http://www.4manuals.cc>

<http://www.manual-lib.com>

<http://www.404manual.com>

<http://www.luxmanual.com>

<http://aubethermostatmanual.com>

Golf course search by state

<http://golfingnear.com>

Email search by domain

<http://emailbydomain.com>

Auto manuals search

<http://auto.somanuals.com>

TV manuals search

<http://tv.somanuals.com>