

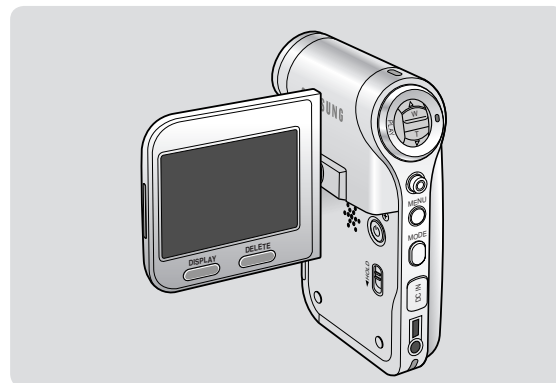
Sports Camcorder

VP-X300/X300L

AF Auto-Focus

CCD Charge Coupled Device

LCD Liquid Crystal Display



SAMSUNG

Owner's Instruction Book

Before operating the unit, please read this Instruction Book thoroughly, and retain it for future reference.

Use only approved battery packs.

Otherwise, there is a danger of overheating, fire or explosion.

Samsung is not responsible for problems occurring due to using unapproved batteries.

AD68-01228F

Contents

<i>Notices and Safety Precautions</i>	8
Precautions when using the Sports Camcorder	8
Notes Regarding COPYRIGHT	9
Notes Regarding Moisture Condensation	9
Notes Regarding the Sports Camcorder	9
Notes Regarding the Battery Pack	10
Notes Regarding the Lens	11
Notes Regarding the LCD Display	11
Precautions Regarding Service	11
Precautions Regarding Replacement Parts	11
<i>Getting to Know Your Sports Camcorder</i>	12
Features	12
Accessories Supplied with the Sports Camcorder	13
<i>Location of Controls</i>	14
Rear & Left View	14
Side & Bottom View	15
External Camera Module View (VP-X300L only)	16
LCD Display	17
OSD (On Screen Display in Movie Record Mode/Movie Play Mode)	17
OSD (On Screen Display in MP3 Mode)	18
OSD (On Screen Display in Voice Record Mode/Voice Play Mode)	19
OSD (On Screen Display in File Browser Mode/System Settings Mode)	20
<i>How to Use the Battery Pack</i>	21
Battery Pack Installation / Ejection	21
Maintaining the Battery Pack	22
Charging the Battery Pack	24

Contents

Getting Started	25
The LED Colour	25
Before You Start Operating the Sports Camcorder	25
Using the MODE button	26
Using the Function button	27
Using the Joystick	27
Using the MENU button	27
Using the DISPLAY button	28
Using the DELETE button	28
Structure of the Folders and Files	29
Recording Time and Capacity	30
Using a Memory card (SD/MMC) (not supplied)	32
Inserting / Ejecting the memory card (SD/MMC) (not supplied)	33
Movie Mode	34
Recording	35
Recording	35
Zooming In and Out	36
Playing	37
Playing Movie Files on the LCD monitor	37
Playing Multiple Movie Files	38
Setting the Recording Options	40
Setting the Movie Size	40
Setting the Movie Quality	41
Setting the White Balance	42
Setting the Program AE (Programmed Auto Exposure)	43
Setting the Effect	44
Setting the EIS (Electronic Image Stabilizer)	45
Setting the Focus	46

Contents

Setting the BLC (Backlight Compensation)	47
Setting the Digital Zoom	48
Setting the Record Mode	49
Setting the Line In/Out.....	50
Setting the Viewing Options.....	51
Deleting Movie Files	51
Setting the Play Mode.....	52
Locking Movie Files.....	53
<i>MP3 Mode</i>	<i>54</i>
Storing MP3 Files in the Sports Camcorder.....	55
Copying MP3 Files to the Sports Camcorder	55
Playing.....	56
Playing MP3 Files.....	56
Setting the MP3 Play Options	57
Deleting MP3 Files	57
Setting the Repeat Play.....	58
Setting the Equalizer	59
Locking MP3 Files	60
<i>Voice Recorder Mode</i>	<i>61</i>
Recording	62
Recording Voice Files	62
Playing.....	63
Playing Voice Files	63
Setting the Voice Play Options	64
Deleting Voice Files.....	64
Setting the Play Mode	65
Locking Voice Files.....	66

Contents

Using File Browser	67
Viewing Files or Folders	68
Deleting Files or Folders	69
Locking Files.....	70
Viewing File Information	71
Setting the Sports Camcorder	72
Setting USB Mode	73
Setting USB Mode.....	73
Setting Memory	74
Setting the File No. Function.....	74
Format.....	75
Viewing Memory Space.....	76
Adjusting the LCD monitor	77
Adjusting the LCD Brightness	77
Adjusting Date/Time	78
Setting Date&Time	78
Setting Date Format	79
Setting Time Format.....	80
Setting Date/Time Display.....	81
Setting the System Settings	82
Setting the Beep Sound	82
Setting Start-up Mode	83
Resetting the Sports Camcorder.....	84
Selecting Language.....	85
Setting the Auto Shut off	86
Setting the Demonstration Function.....	87
Viewing Version Information.....	88

Contents

Using USB Mode	89
Transferring files to a computer	89
Using the PC Cam Function	90
<i>Using the External Camera Module (VP-X300L only)</i>	91
Recording with the External Camera Module	92
Recording Movie using the External Camera Module.....	92
Wearing the External Camera Module	93
Mounting the External Camera Module on Rubber Mount.....	93
Using the Long Mount Band	94
<i>Miscellaneous Information</i>	95
USB Interface Environment	96
USB connection to a computer	96
System Environment	96
Installing Software	97
Installing DV Media Pro.....	97
Ulead Video Studio.....	98
Connecting To Other Devices	99
Connecting to a PC using a USB Cable.....	99
Connecting to a TV monitor	100
Connecting to a VCR / DVD Recorder	101
Recording unscrambled content from other digital devices	102
<i>Maintenance</i>	103
Cleaning and Maintaining the Sports Camcorder	103
After using the Sports Camcorder.....	103
Cleaning the Body.....	104
Using the Built-in Rechargeable Battery.....	104

Contents

Regarding the Battery	105
Using the Sports Camcorder Abroad.....	106
<i>Troubleshooting</i>	107
Self Diagnosis Display	107
<i>Using the Menu</i>	109
<i>Specifications</i>	111
<i>Index</i>	113
<i>Power Sources (United Kingdom Only)</i>	114

Notices and Safety Precautions

Precautions when using the Sports Camcorder

- ❖ Please note the following precautions for use:
- ❖ Please keep this device in a safe place. The device contains a lens that can be damaged by shock. Keep away from the reach of the children.

- Do not place your device in a wet place. Moisture and water may cause the device to malfunction.
- To avoid electric shock, do not touch your device or power cable with wet hands.
- If the device is not working properly, please consult your nearest dealer or authorized Samsung service facility. Disassembling the device yourself may cause irrecoverable damage which will be difficult to repair.
- Clean the device with a dry, soft cloth. Use a soft cloth moistened with a mild detergent solution for removing stains. Do not use any type of solvent, especially benzene, as it may seriously damage the finish.
- Keep your device away from rain and saltwater. After using, clean the device. Saltwater may cause the parts to corrode.
- To disconnect the apparatus from the mains, the plug must be pulled out from the mains socket, therefore the mains plug shall be readily operable.
- Using the earphone or headphone for an extended time can cause a serious damage to your hearing.
 - If you are exposed to a sound in higher than 85db for an extended time, you will be adversely affected on your hearing. The higher the sound is, the more seriously damaged your hearing is (an ordinary conversation is made in 50 to 60 db and the noise level on the road is approximately 80 db).
 - You are strongly advised to set the volume level to medium (the medium level is usually less than 2/3 of the maximum).
- If you feel a ringing in the ear(s), lower the volume or stop using the earphone or headphone.
- Do not use the earphone while you are driving a bicycle, automobile or motorcycle.
 - Otherwise it can cause a serious accident and, furthermore, it is prohibited by the law in some areas.
 - Using the earphone on the way, in particular, on the crosswalk can lead to a serious accident.
- For your safety, make sure the earphone cable should not get in the way of your arm or other surrounding objects while you are taking exercise or a walk.

Notices and Safety Precautions

Notes Regarding COPYRIGHT

- ❖ Television programmes, movie video tapes, DVD titles, films and other programme materials may be copyrighted. Unauthorized recording of copyrighted materials may infringe on the rights of the Copyright owners and is contrary to copyright laws.
- ❖ All the trade names and registered trademarks mentioned in this manual or other documentation provided with your Samsung product are trademarks or registered trademarks of their respective holders.

Notes Regarding Moisture Condensation

- ❖ **A sudden rise in atmospheric temperature may cause condensation to form inside the Sports Camcorder.**

For Example:

- ❖ Entering or leaving a heated place on a cold day might cause condensation inside the product.
- ❖ To prevent condensation, place the product in a carrying case or a plastic bag before exposing it to a sudden change of temperature.

Notes Regarding the Sports Camcorder

- 1. Do not leave the Sports Camcorder exposed to high temperature (above 60°C or 140°F).**
For example, in a parked closed car in summer or exposed to direct sunlight.
- 2. Do not let the Sports Camcorder get wet.**
Keep the Sports Camcorder away from rain, salt water, or any other form of moisture.
The Sports Camcorder will be damaged if immersed in water or subjected to high levels of moisture.

Notices and Safety Precautions

Notes Regarding the Battery Pack

- ❖ We recommend using the original battery pack that is available at the retailer where you purchased the Sports Camcorder.
- ❖ Make sure the battery pack is fully charged before starting to record.
- ❖ To preserve battery power, keep the Sports Camcorder turned off when you are not operating it.
- ❖ If your device is left in STBY mode without being operated for more than 5 minutes, it will automatically turn itself off to protect against unnecessary battery discharge.
- ❖ Make sure that the battery pack is attached firmly in place.
- ❖ The new battery pack provided with the product is not charged. Before using the battery pack, you need to fully charge it.
- ❖ Do not drop the battery pack. Dropping the battery pack may damage it.
- ❖ Fully discharging a Lithium Polymer battery damages the internal cells. The battery pack may be prone to leakage when fully discharged.
- ❖ To avoid damage to the battery pack, make sure to remove the battery when no charge remains.
- ❖ Clean the terminal to remove foreign substance before inserting the battery pack.

- * When the battery reaches the end of its life, please contact your local dealer. Batteries must be disposed of as chemical waste.
- * Be careful not to drop the battery pack when you release it from the Sports Camcorder.

Notices and Safety Precautions

Notes Regarding the Lens

- ❖ Do not film with the Sports Camcorder lens pointing directly at the sun. Direct sunlight can damage the CCD (Charge Coupled Device, the imaging sensor).

Notes Regarding the LCD Display

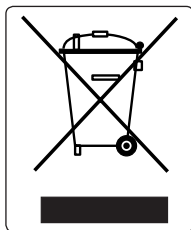
1. The LCD monitor has been manufactured using the high precision technology. However, there may be tiny dots (red, blue or green in colour) that appear on the LCD monitor. These dots are normal and do not affect the recorded picture in anyway.
2. When you use the LCD monitor under direct sunlight or outdoors, it may be difficult to see the picture clearly.
3. Direct sunlight can damage the LCD monitor.

Precautions Regarding Service

- ❖ Do not attempt to service the Sports Camcorder yourself.
- ❖ Opening or removing covers may expose you to dangerous voltage or other hazards.
- ❖ Refer all servicing to qualified service personnel.

Precautions Regarding Replacement Parts

- ❖ When replacement parts are required, be sure the service technician has used replacement parts specified by the manufacturer and having the same characteristics as the original part.
- ❖ Unauthorized substitutions may result in fire, electric shock or other hazards.



Correct Disposal of This Product (Waste Electrical & Electronic Equipment)

(Applicable in the European Union and other European countries with separate collection systems)

This marking shown on the product or its literature, indicates that it should not be disposed with other household wastes at the end of its working life. To prevent possible harm to the environment or human health from uncontrolled waste disposal, please separate this from other types of wastes and recycle it responsibly to promote the sustainable reuse of material resources. Household users should contact either the retailer where they purchased this product, or their local government office, for details of where and how they can take this item for environmentally safe recycling. Business users should contact their supplier and check the terms and conditions of the purchase contract. This product should not be mixed with other commercial wastes for disposal.

Getting to Know Your Sports Camcorder

Features

- **Multifunctional Sports Camcorder**
This Sport Camcorder packs various functions into one tiny device. This pocket-sized unit is a digital camcorder, an MP3 player, voice recorder, web cam(PC camera) and a portable data storage device.
- **Digital Video Camcorder**
Records enhanced quality video in MPEG4 ASP(Advanced Simple Profile) format(720 x 576) at 25fps for high resolution, life-like images.
- **100x Digital Zoom**
Allows the user to magnify an image up to 100x its original size.
- **Colourful TFT LCD**
A high-resolution(211K) colourful TFT LCD gives you clean, sharp images as well as the ability to review your recorded files immediately.
- **Electronic Image Stabilizer (EIS)**
The EIS helps you reduce unstable images by compensating for natural shaking movements.
- **Various Digital Effects**
The DSE (Digital Special Effects) allows you to give the film a special look by adding various special effects.
- **USB Interface for Data Transfer**
You can transfer movie files or any other files to a PC using the USB interface.
- **PC Cam for multi-entertaining**
You can use this Sports Camcorder as a PC camera for video chatting, video conference and other PC camera applications.
- **Voice Record / Playback with vast memory**
You can record voices and store it in the memory card (not supplied) and play back the recorded voice files.
- **Download & Listen to MP3 Files**
With the Sports Camcorder, you can play back MP3 files stored in the memory card (not supplied).
Enjoy your favorite songs with your Sports Camcorder.
- **A Sports Camcorder equipped with External Camera Module (VP-X300L only)**
The Sports Camcorder is equipped with an External Camera Module, which enables you to directly record when connected to the main unit
- **Weatherproof (External Camera Module only) (VP-X300L only)**
The External Camera Module is weatherproof according to IP42 standard.
IP-Protection Level
4- The External Camera is protected against contact from solid objects over 0.04inch in diameter.
2- The External Camera is protected against water sprayed from a vertical position above the centre of Sports Camcorder top (Power LED facing up) at 15 degree angles.
- **Multi OSD Language**
Supports various foreign languages to display the menu and information.
You can select the desired OSD language from OSD list.
- **Multi jack**
The Multi jack functions as an Earphone, AV Input/Output or *External Camera Module jack.
You can use various functions with only one jack.

*: VP-X300L only

Getting to Know Your Sports Camcorder

Accessories Supplied with the Sports Camcorder















❖ Make sure that the following basic accessories are supplied with your Sports Camcorder.

Basic Accessories

1. Lithium Polymer Battery pack
2. AC Power Adapter
3. Audio/Video Cable
4. USB Cable
5. Earphones
6. Hand Strap
7. Instruction Book/Quick Guide
8. Software CD
9. Lens Cover
10. External Camera Module (VP-X300L only)
11. Rubber Mount (VP-X300L only)
12. Long Mount Band (VP-X300L only)
13. Carrying Case (VP-X300L only)

Optional Accessory

14. Extended life Battery pack

1. Lithium Polymer Battery pack 	2. AC Power Adapter 	3. Audio/Video Cable 	4. USB Cable 
5. Earphones 	6. Hand Strap 	7. Instruction Book/Quick Guide 	8. Software CD 
9. Lens Cover 	10. External Camera Module 	11. Rubber Mount 	12. Long Mount Band 
13. Carrying Case 	14. Extended life Battery pack 		

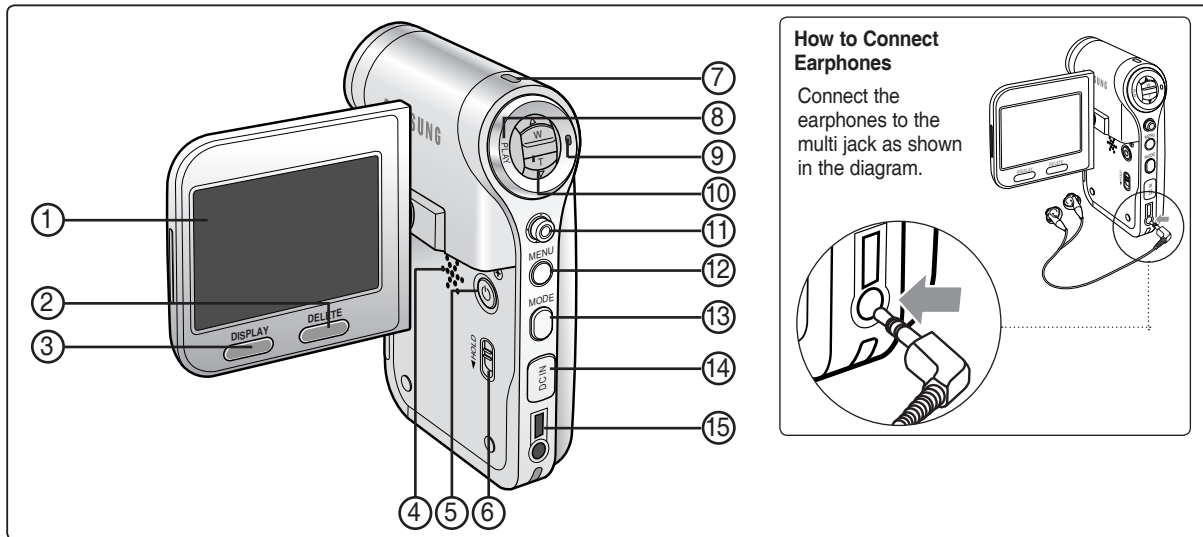
[Notes]

- ❖ The accessories supplied can vary depending on the sales region.
- ❖ Parts and accessories are available at your local Samsung dealer and service centre.
- ❖ You can download programmes, the latest driver software, and audio/video CODECs from the Samsung Electronics webpage. (www.samsung.com)

ENGLISH

Location of Controls

Rear & Left View



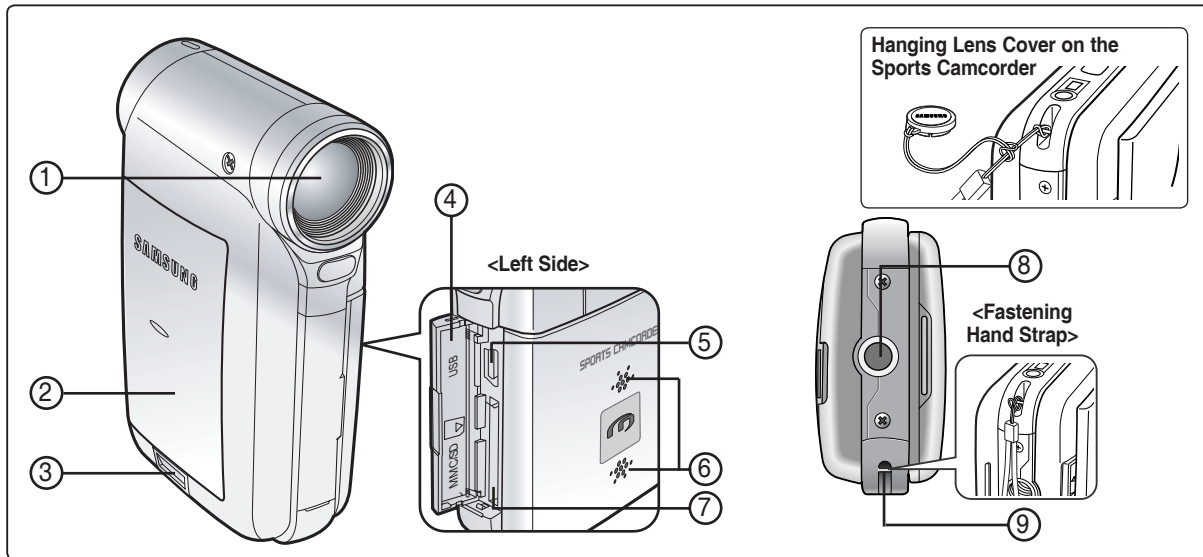
- | | |
|--|--|
| 1. LCD monitor | 9. Record/Stop button |
| 2. DELETE button | 10. [W/T] switch |
| 3. DISPLAY button | 11. Joystick (Up, Down, Left, Right, OK) |
| 4. Built-in speaker | 12. MENU button |
| 5. POWER button | 13. MODE button |
| 6. MP3/*External Camera Module HOLD switch | 14. DC IN jack |
| 7. Record / Power/Charging indicator | 15. Multi jack |
| 8. PLAY button | |

[Note]

- ❖ Multi jack is a unified Earphones, AV Input/Output and *External Camera Module jack.

Location of Controls

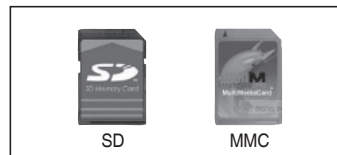
Side & Bottom View



- 1. Lens
- 2. Battery pack
- 3. Battery eject switch
- 4. Front cover
- 5. USB port

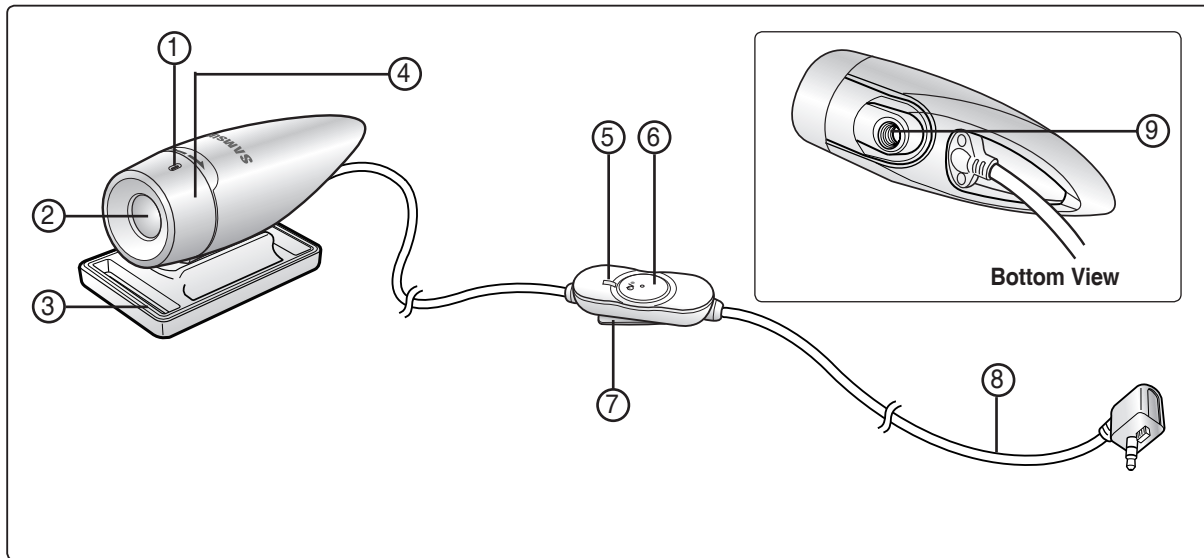
- 6. Built-in microphone
- 7. Memory card slot
- 8. Tripod receptacle
- 9. Strap hook

Usable Memory Cards (4GB Max)



Location of Controls

External Camera Module View (VP-X300L only)

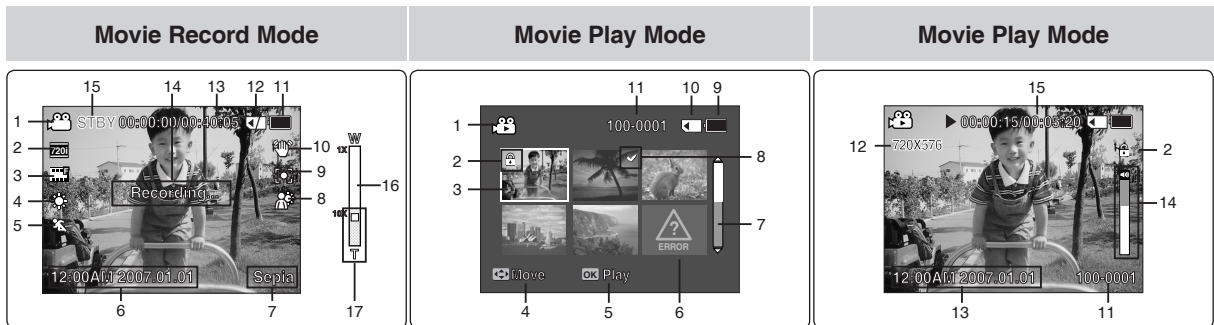


1. Built-in microphone
2. Lens
3. Rubber Mount
4. Picture Rotator
5. Record/Power indicator

6. POWER/Record/Stop button
7. Clip
8. External Camera Module cable
9. Rubber Mount receptacle

Location of Controls : LCD Display

OSD (On Screen Display in Movie Record Mode/Movie Play Mode)



1. Mode indicator
2. Movie size indicator
3. Movie quality indicator
4. White balance indicator
5. Program AE indicator
6. Date/Time indicator
7. Effect indicator
8. BLC indicator *
9. Focus indicator *
10. EIS indicator
11. Battery life indicator
12. Memory Card Indicator (No memory card)
13. Counter
(Elapsed time/Remaining time)
14. Warning and note indicator
15. Record/STBY indicator
16. Optical zoom indicator
17. Digital zoom indicator

1. Mode indicator
2. Lock indicator
3. Current display indicator
4. Move (Help Key)
5. Play (Help Key)
6. Damaged file indicator
7. Scroll bar
8. Multi selection indicator
9. Battery life indicator
10. Memory Card Indicator
11. Image counter (Current image)

12. Image size indicator
13. Date/Time indicator
14. Volume indicator
15. Counter
(Elapsed time/Recorded time)

[Notes]

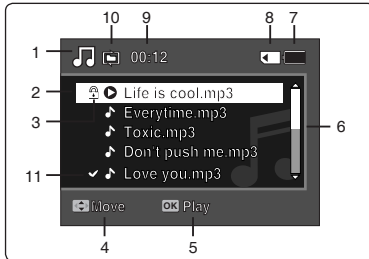
- ❖ Settings indicated with * will not be retained when the Sports Camcorder is turned off.
- ❖ The OSD indicators of this product are based on model VP-X300L.
- ❖ The OSD indicators are based on memory capacity of 1GB (MMC).
- ❖ For enhanced performance, the display indications and the order are subject to change without prior notice.

ENGLISH

Location of Controls : LCD Display

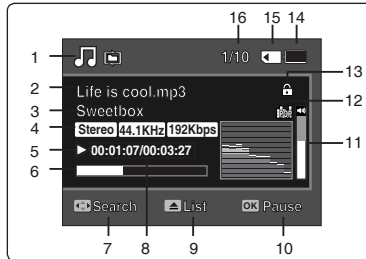
OSD (On Screen Display in MP3 Mode)

MP3 Mode



1. Mode indicator
2. File name indicator
3. Lock indicator
4. Move (Help Key)
5. Play (Help Key)
6. Scroll bar indicator
7. Battery life indicator
8. Memory Card Indicator
9. Counter(Elapsed time)
10. Repeat indicator
11. Multi selection indicator

MP3 Mode



1. Mode indicator
2. File name indicator
3. Artist indicator
4. Sampling rate/Bit rate
5. Operation indicator
6. Progress bar indicator
7. Search (Help Key)
8. Counter(Elapsed time/Full time)
9. List (Help Key)
10. Play/Pause (Help Key)
11. Volume indicator
12. Equalizer indicator
13. Lock indicator
14. Battery life indicator
15. Memory Card Indicator
16. File number indicator (Current / Total)

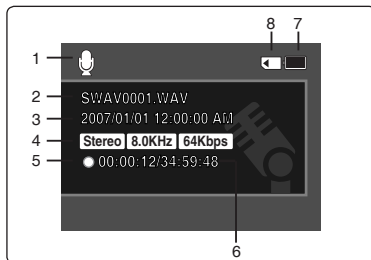
[Notes]

- ❖ Settings will be retained when the Sports Camcorder is turned off.
- ❖ MP3 files with tag information will display the artist name.
- ❖ MP3 files with no tag information will leave the item blank.

Location of Controls : LCD Display

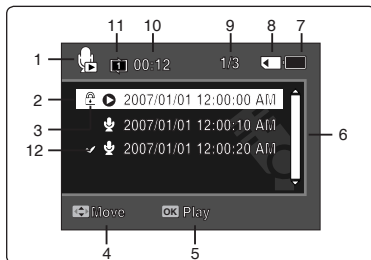
OSD (On Screen Display in Voice Record Mode/Voice Play Mode)

Voice Record Mode



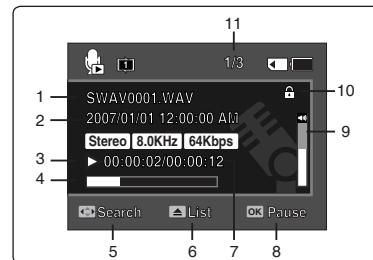
1. Mode indicator
2. File name indicator
3. Date/Time indicator
4. Sampling rate/Bit rate
5. Operation indicator
6. Counter
(Elapsed Time / Remaining Time)
7. Battery life indicator
8. Memory Card Indicator

Voice Play Mode



1. Mode indicator
2. Date/Time indicator
3. Lock indicator
4. Move (Help Key)
5. Play (Help Key)
6. Scroll bar indicator
7. Battery life indicator
8. Memory Card Indicator
9. File number indicator
(Current / Total)
10. Counter(Elapsed time)
11. Repeat indicator
12. Multi selection indicator

Voice Play Mode



1. File name indicator
2. Date/Time indicator
3. Operation indicator
4. Progress bar indicator
5. Search (Help Key)
6. List (Help Key)
7. Counter
(Elapsed time / Recorded time)
8. Play/Pause (Help Key)
9. Volume indicator
10. Lock indicator
11. File Number indicator
(Current / Total)

[Note]

- ♣ Settings will be retained when the Sports Camcorder is turned off.

Location of Controls : LCD Display

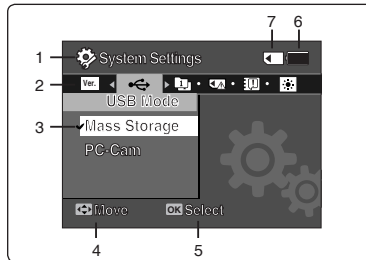
OSD (On Screen Display in File Browser Mode/System Settings Mode)

File Browser Mode



1. Mode indicator
2. Current selected folder indicator
3. Current selected file indicator
4. Lock indicator
5. Multi selection indicator
6. Move (Help Key)
7. Play (Help Key)
8. Scroll bar indicator
9. Battery life indicator
10. Memory Card Indicator
11. File number indicator
(Current / Total)

System Settings Mode



1. Mode indicator
2. Menu tab
3. Setup item
4. Move (Help Key)
5. Select (Help Key)
6. Battery life indicator
7. Memory Card Indicator

How to Use the Battery Pack

Battery Pack Installation / Ejection

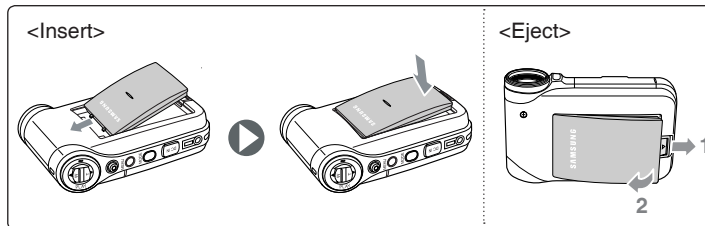
It is recommended you purchase one or more additional battery packs to allow continuous use of your Sports Camcorder.

To insert the battery pack

Slide the battery pack into the groove until it clicks.

To eject the battery pack

Pull the Battery eject switch to eject the battery pack.



Battery
SB-P120A (1200mAh)
SB-P190A (1900mAh)

[Notes]

- ❖ Clean the terminals to remove foreign substances before inserting the battery pack.
- ❖ If the Sports Camcorder will not be in use for a while, remove the battery pack from the Sports Camcorder.

How to Use the Battery Pack

Maintaining the Battery Pack

- ❖ The battery pack should be recharged in an environment of between 32°F(0°C) and 104°F(40°C).
- ❖ The battery pack should never be charged in a room temperature that is below 32°F(0°C).
- ❖ The life and capacity of the battery pack will be reduced if it is used in temperatures below 32°F(0°C) or left in temperatures above 104°F(40°C) for a long period.
- ❖ Do not put the battery pack near any heat sources (fire or flames, for example).
- ❖ Do not disassemble, process, press or heat the battery pack.
- ❖ Do not allow the + and - terminals of the battery pack to be short-circuited. It may cause leakage, heat generation, induce fire and overheating.
- ❖ It is recommended that you use the original Samsung battery pack that is available at the retailer where you purchased the Sports Camcorder.
- ❖ In case of notable reduction in operating time, contact your nearest Samsung service centre to replace the exhausted battery pack.

Continuous recording time based on battery type

If you close the LCD screen, it switches off automatically.

The continuous recording times given in the table below are approximations. Actual recording time depends on usage.

Battery	Time	Continuous Recording Time	
		LCD monitor ON	LCD monitor OFF
SB-P120A (1200mAh)		Approx. 1 hr. 20 min.	Approx. 1 hr. 40 min.
SB-P190A (1900mAh)		Approx. 2 hr. 30 min.	Approx. 2 hr. 50 min.

[Warning]

- ❖ When you eject the battery pack from the Sports Camcorder, hold the battery pack to prevent it from dropping to the floor.

[Notes]

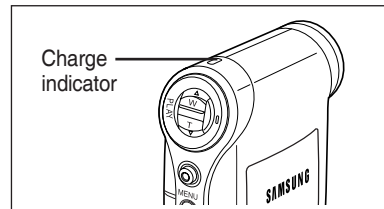
- ❖ Prepare an extra battery if you use the Sports Camcorder outdoors.
- ❖ Contact a Samsung retailer to purchase a new battery pack.
- ❖ If you zoom in or out, the recording time becomes shorter.
- ❖ 'The Continuous Recording Time' listed is approximate and is affected by functions such as zooming.

How to Use the Battery Pack

Battery Level Display

The Battery Level Display shows the amount of battery power remaining in the battery pack.

Battery Level Indicator	State	Message
	Fully charged	-
	20~40% used	-
	40~60% used	-
	60~80% used	-
	80~95% used	-
	Exhausted(flickers) The device will soon turn off. Change the Battery Pack as soon as possible.	-
	(flickers) The device will be forced to turn off after 5 seconds.	“Low battery”



Tips for Battery Identification

If the battery has been fully charged, the charge indicator is green.
If you are charging the battery, the colour of the charge indicator is orange.
The charge indicator flickers if the battery is abnormal.

Charging time based on battery type

Capacity	using AC Power Adapter	using USB cable
SB-P120A (1200mAh)	Approx. 1 hr. 50 min	Approx. 3hr. 40 min
SB-P190A (1900mAh)	Approx. 3 hr. 20 min	Approx. 6hr. 20 min

[Notes]

- ❖ You may charge your Sports Camcorder by connecting it to a PC with the USB cable.
- ❖ You may not charge via USB if the power is on.
- ❖ The charging time with the USB cable may differ depending on the PC.

How to Use the Battery Pack

Charging the Battery Pack

1. Turn off the Sports Camcorder by pressing the [POWER] button.
 - ◆ Make sure you turn the power off when using the USB cable.
2. Insert the battery pack to the unit.
3. Open the connector cover of the unit.
4. Charge the battery pack by using AC Power Adapter or USB Cable.

AC Power Adapter	Connect the AC Power Adapter with the Sports Camcorder and plug the AC Power Adapter to the wall outlet.
USB Cable	Connect the USB Cable with the Sports Camcorder and connect the other side to a USB port on your PC

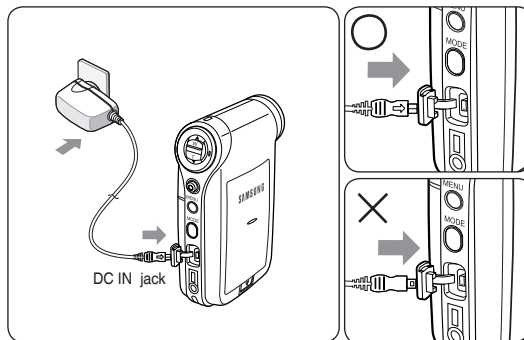
[Note]

- ❖ You may use the Sports Camcorder powered by the AC Power Adapter indoors where available.

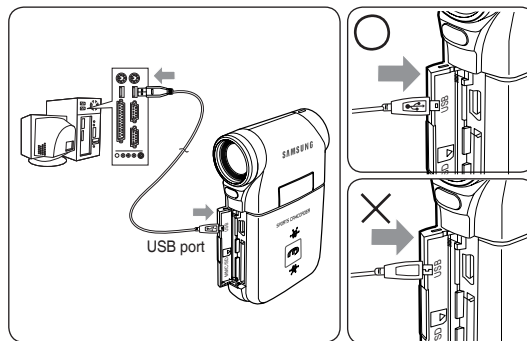
[Warning]

- ❖ It is recommended you fully charge the battery pack before use.
- ❖ You should only charge the battery in an environment between 32°F and 104°F.
- ❖ If ambient temperature is too low when charging, the battery may take a long time to fully charge, or may not charge completely and the green indicator will not turn on.
- ❖ Before connecting the cable, make sure that you don't have any foreign substances between connectors.

Connecting the AC Power Adapter



Connecting the USB Cable



Getting Started

The LED Colour

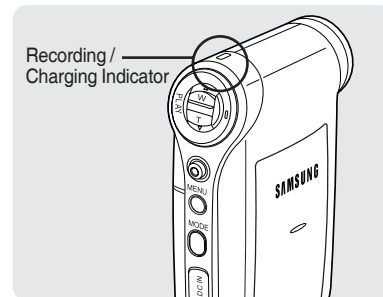
The LED Colour indicates the power or charge status.

Recording / Charging Indicator

LED Colour	During Recording	During Charging
Red	Recording <Movie and Voice Recorder mode>	-
Orange	-	Charging
Green	-	Fully Charged

Power Indicator

LED Colour	Power
Blue	On



Before You Start Operating the Sports Camcorder

Before using the Sports Camcorder, refer to this page for easy operation. The memory card is not supplied.

1. Insert the battery pack and the memory card into the Memory Card slot. ➔page 33
2. Charge the battery pack by directly connecting the AC Power Adapter to the Sports Camcorder.
➔page 24
3. Press the [POWER] button to turn on the Sports Camcorder.
4. Select the desired mode by pressing the [MODE] button.
5. Press the [Record / Stop] button to start recording a movie / voice.
6. When finished, press the [POWER] button to turn the Sports Camcorder off.

Getting Started

Using the *MODE* button

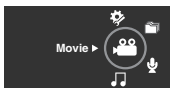
The [MODE] button is used to change the Sports Camcorder mode. Available modes are Movie, MP3, Voice Recorder, File Browser and System Settings.

Setting the Mode

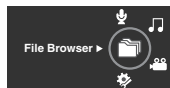
Set the desired mode by pressing the [MODE] button.

The Sports Camcorder switches to the designated mode.

Functions of Each Mode



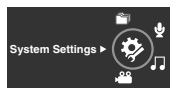
Movie mode
You can record and play movie files.



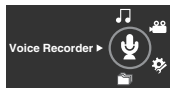
File Browser mode
You can delete, lock, copy the file and view file information.



MP3 mode
You can play back mp3 files.



System Settings mode
Using this mode, you can set / adjust settings regarding the LCD display, Date / Time, Reset and Memory management.



Voice Recorder mode
You can record and listen to voice files.

Power Saving Function

The LCD monitor is turned off after a certain period of time has passed (see below) in each mode in order to prevent unnecessary battery power consumption.

Press any button to go back and turn on the LCD monitor.





Mode	Movie	MP3	Voice Recorder	File Browser	System Settings	USB
Time	10 min.	30 sec.	30 sec.	30 sec.	60 sec.	60 sec.

Getting Started

Using the Function button

The Function button is used to make a selection, move the cursor, select the functions and exit from the menu.

Using the Function button

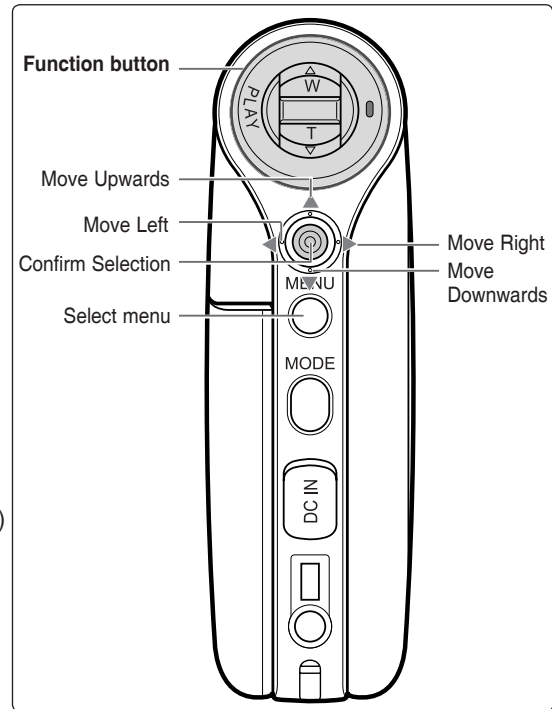
Button	Recording	Playing
	Zoom out (▲)	Multi-Play screen/Play List
	Zoom in (▼)	-
	Change from record to play mode.	Play/Pause
	Recording	Change from play to record mode.

Using the Joystick

- ❖ The joystick is used to make a selection, move the cursor, select functions, and exit from the menu.
1. Move the cursor left / right by moving the [Joystick].
 2. Move the cursor up / down by moving the [Joystick].
 - ◆ You can adjust the volume by moving the [Joystick] (up / down) in *Movie / MP3 / Voice Recorder* playback modes
 3. Confirm your selection by pressing the [Joystick(OK)].

Using the MENU button

1. Set the desired mode by pressing the [MODE] button.
2. Press the [MENU] button.
3. Move the cursor by moving the [Joystick] up / down / left / right to select desired menu item, and then press the [Joystick(OK)] to confirm.
4. Press the [MENU] button to finish.

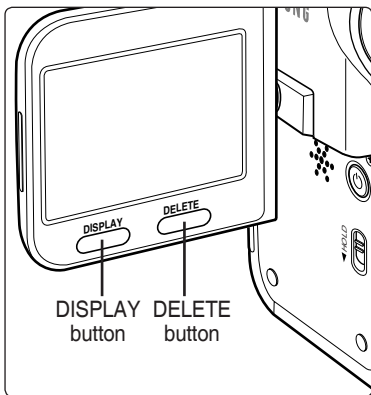


Getting Started

Using the **DISPLAY** button

Each press of the [DISPLAY] button toggles the OSD indicator on and off.

1. Open the LCD monitor.
2. Press the [POWER] button to turn on the Sports Camcorder.
 - ◆ The Movie Record screen appears.
 - ◆ You can select Movie Mode or Previous Mode as the Start-up mode in System Settings. ➔page 83
3. Press the [DISPLAY] button.



If you press the [DISPLAY] button in Movie mode

- ❖ Once : All indicators will disappear on the screen.
- ❖ Twice : The LCD monitor turns off.
- ❖ 3 times : It returns to the initial screen.

[Note]

- ❖ Above description applies to the Movie mode.

If you press the [DISPLAY] button in another mode

- ❖ Once : The LCD monitor turns off.
- ❖ Twice : It returns to the initial screen.

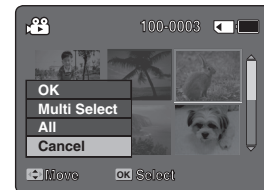
[Note]

- ❖ Above description applies to the MP3/Voice Recorder/File Browser/System Settings mode.

Using the **DELETE** button

The [DELETE] button is used to delete saved files.

- ◆ <OK>: The selected file is deleted.
- ◆ <Multi Select>: The selected files will be deleted.
- ◆ <All>: All files will be deleted.
- ◆ <Cancel>: Cancels deletion.



Getting Started

Structure of the Folders and Files

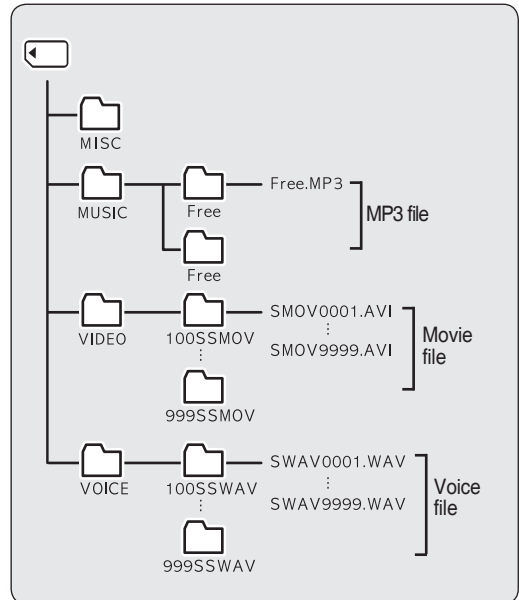
The movie, music, voice files and so forth files are stored within the recording medium as below.

[Notes]

- ❖ Refer to page 32 for details about the memory card.
- ❖ You can store general data in the [MISC] folder.
- ❖ You can store up to 9,999 files and 999 folders.
- ❖ SMOV****.AVI: Movie file
SWAV****.WAV: Voice file
*****.MP3: MP3 file
- ❖ You can freely change the file or folder names in the MUSIC folder on your PC.
- ❖ Movie files made on other manufacturers' equipment may not play on this Sports Camcorder.

[Warning]

- ❖ Do not turn the power off while recording, playing, erasing files or formatting.
- ❖ Turn the power off before you insert or eject the memory card to avoid losing data.
- ❖ Save important files separately.
- ❖ Memory cards are made with precision technology. They are sensitive and vulnerable to electric shock, temperature and humidity. Be cautious with handling them to avoid losing data.
- ❖ Damaged data may not be recovered, and SAMSUNG is not responsible for lost data. Make sure to back up important files on your PC separately.



Getting Started

Recording Time and Capacity

Movie Record Time

Media	Capacity	Super Fine		Fine		Normal	
		352p	720i/720p	352p	720i/720p	352p	720i/720p
SD/MMC	32MB	approx. 1min. 20sec.	approx. 50sec.	approx. 2min.	approx. 1min. 20sec.	approx. 4min.	approx. 2min.
	64MB	approx. 3min.	approx. 2min.	approx. 4min.	approx. 3min.	approx. 7min.	approx. 4min.
	128MB	approx. 4min.	approx. 3min.	approx. 7min.	approx. 4min.	approx. 17min.	approx. 7min.
	256MB	approx. 11min.	approx. 7min.	approx. 17min.	approx. 11min.	approx. 32min.	approx. 17min.
	512MB	approx. 21min.	approx. 14min.	approx. 32min.	approx. 21min.	approx. 65min.	approx. 32min.
	1GB	approx. 43min.	approx. 29min.	approx. 65min.	approx. 43min.	approx. 131min.	approx. 65min.
	2GB	approx. 86min.	approx. 58min.	approx. 130min.	approx. 86min.	approx. 262min.	approx. 130min.

[Notes]

- ❖ The recording time and capacity is an approximation.
- ❖ The recording times shown are maximum figures based on using one function.
In actual use, using more than one function will reduce the capacity of each.
- ❖ The compressibility is changed automatically depending on the recorded movies. The maximum recording time and capacity can be changed in 'Movie Record'.
- ❖ The Sports camcorder supports 4GB memory cards and lower. Any card above 4GB may not record or play properly.
- ❖ If you record movie files at Normal(352/720) quality to a memory card, the recording time increases but the movie may have lower quality than other levels.
- ❖ The recording time and capacity may vary if a bad sector(section) is generated when you record movie files to a memory card.

Getting Started

Number of MP3 files that can be saved

Media	Capacity	MP3 files
SD/MMC	32MB	approx. 8files
	64MB	approx. 16files
	128MB	approx. 32files
	256MB	approx. 64files
	512MB	approx. 128files
	1GB	approx. 256files
	2GB	approx. 512files

Voice Record Time

Media	Capacity	Time
SD/MMC	32MB	approx. 1hr.
	64MB	approx. 2hr.
	128MB	approx. 4hr.
	256MB	approx. 8hr.
	512MB	approx. 17hr.
	1GB	approx. 35hr.
	2GB	approx. 70hr.

[Notes]

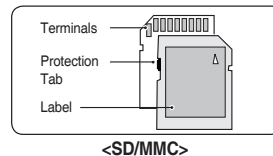
- ❖ Number of MP3 files that can be saved is based on 128Kbps sampling / 4MB size.
- ❖ Capacity may vary depending on file size.
- ❖ You must only format the memory card on the Sports Camcorder. ➔page 75
- ❖ Do not format the memory card on your PC.
- ❖ The recordable time and number of files are maximum figures based on using one function.
In actual use, using more than one function will reduce the capacity of each.
- ❖ While saving to a memory card, recording may stop and a message will appear saying <Low speed card. Please record at lower quality.> It is because the writing speed of the memory card is slow. We recommended using a Memory Card of 1.25MB/sec or greater. If you are unavoidably using a low write speed memory card, lower the recording quality by one level < Fine -> Normal>.

Getting Started

Using a Memory card (SD/MMC) (not supplied)

- ❖ Samsung is not responsible for data loss due to misuse.
- ❖ Turning the power off / ejecting the memory card during memory operation such as formatting, deleting, recording, and playback may damage the data.
- ❖ You may modify the name of a file / folder stored in the memory card using a PC. The Sports Camcorder may not recognise modified files.
- ❖ It is recommended that you power off before inserting or ejecting the memory card to avoid losing data.
- ❖ It is not guaranteed that you may use a memory card formatted on other devices. Be sure to format your memory card using the Sports Camcorder.
- ❖ Save important files separately on other media, such as floppy disk, hard disk, or CD.
- ❖ You have to format newly-purchased memory cards, memory cards that the Sports Camcorder cannot recognise or the cards that have data saved by other devices.
- ❖ A memory card has a certain life span. If you use it for a long time, you may not be able to record new data. In this case, you have to purchase a new memory card.
- ❖ Do not bend, drop, or apply a strong impact to the memory card.
- ❖ Do not use or store in a hot, dusty or humid environment.
- ❖ Do not allow foreign substances on the memory card terminals. Use a soft dry cloth to clean the terminals if required.
- ❖ Use a memory card case to avoid losing data from moving and static electricity.
- ❖ After a period of use, the memory card may get warm. This is normal and not a malfunction.
- ❖ Damaged data may not be recovered, and SAMSUNG is not responsible for the lost data. Make sure to back up important files separately on a PC.
- ❖ miniSD/RS-MMC cards must be inserted in a special card adapter in order to be used.
- ❖ Be sure to insert miniSD/RS-MMC cards in the dedicated card adapter before use. Inserting a card in the Sports Camcorder without the adapter may damage the Sports Camcorder or the card.
- ❖ Do not insert an empty card adapter in the Sports Camcorder. Do not leave the adapter in the Sports Camcorder while inserting or removing miniSD/RS-MMC cards. This may cause the Sports Camcorder to malfunction.

* 1GB = 1,000,000,000bytes; actual formatted capacity may be less as the internal firmware uses a portion of the memory.



Getting Started

Inserting / Ejecting the memory card (SD/MMC) (not supplied)

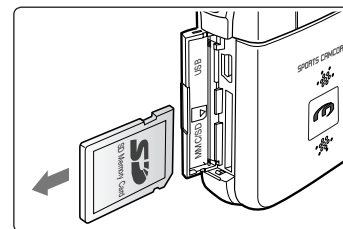
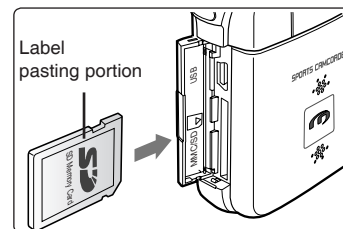
This camcorder can use SD memory cards and MMC (Multi Media Cards). Some cards are not compatible according to the memory card manufacturer and memory card type.

Inserting a memory card

1. Open the Front cover.
2. Insert the memory card into the memory card slot until it softly clicks.
3. Close the Front cover.

Ejecting a memory card

1. Open the Front cover.
2. Slightly push the memory card inwards to pop it out.
3. Pull the memory card out of the memory card slot and close the Front cover.

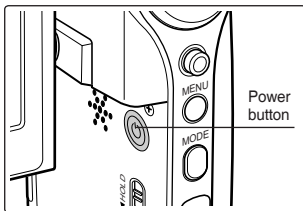


- The Sports Camcorder supports SD and MMC memory cards for data storage.
- The data storage speed can differ, according to the manufacturer and production system.
 - SLC(single level cell) system: faster write speed enabled
 - MLC(multi level cell) system: only lower write speed supported.
- The user using a lower write speed memory card for recording a movie may have difficulties storing the movie on the memory card. You can even lose your movie data during the recording.
- In an attempt to preserve any bit of the recorded movie, the Sports Camcorder forcibly stores the movie on the memory card and displays a warning: <Low speed card. Please record at lower quality.>
- **To facilitate the movie recording, you are recommended to use a memory card that supports faster write speed.**
- If you are unavoidably using a low speed memory card, it is desirable to lower the recording quality by one level <Fine -> Normal> or decrease the movie size to 352P to reduce the data size.
- You can have three quality options to record a movie with the Sports Camcorder:
 - <Super Fine, Fine, Normal>
- You can record the same scene in three quality levels of <Super Fine, Fine, Normal> However, the better the quality is, the bigger the data size is.
- **For optimal performance of the Sports Camcorder, ensure that you purchase a fast speed memory card.**

1 Movie Mode

How to set to Movie mode

1. Press the [POWER] button to turn on the Sports Camcorder.



2. The *Movie Record* screen appears.



Recording	35
Recording.....	35
Zooming In and Out.....	36
Playing	37
Playing Movie Files on the LCD monitor	37
Playing Multiple Movie Files.....	38
Setting the Recording Options	40
Setting the Movie Size.....	40
Setting the Movie Quality	41
Setting the White Balance.....	42
Setting the Program AE (Programmed Auto Exposure).....	43
Setting the Effect	44
Setting the EIS (Electronic Image Stabilizer).....	45
Setting the Focus.....	46
Setting the BLC (Backlight Compensation)	47
Setting the Digital Zoom.....	48
Setting the Record Mode	49
Setting the Line In/Out.....	50
Setting the Viewing Options	51
Deleting Movie Files	51
Setting the Play Mode	52
Locking Movie Files.....	53

- ◆ Save important data / recordings separately on other media, to avoid accidental loss due to a system failure or other reasons.

Movie Mode : Recording

Recording

You can record movies and store it in the memory card.
Refer to the page 92 for recording video using the External Camera Module. (VP-X300L only)

1. Press the [POWER] button to turn on the Sports Camcorder.

- ◆ The Movie Record screen appears.
- ◆ You can select Movie mode or Previous mode as the start-up mode in System Settings.
➡page 83

2. Press [Record/Stop] button to start recording.

- ◆ [●] indicator displays on the LCD monitor.
- ◆ The elapsed and remaining times are displayed and the Sports Camcorder starts recording.

3. Press the [Record/Stop] button again to stop recording.

- ◆ The Sports Camcorder stops recording.

4. After recording, press the [POWER] button to turn off the Sports Camcorder to prevent battery power consumption.



Reading the Counter

- ◆ The timestamp will be recorded along with the movie to enable faster searching.



[Notes]

- ❖ If the Auto Shut Off is set, the Sports Camcorder turns off automatically after 5 minutes.
- ❖ Detach the battery pack when you finish recording to prevent unnecessary battery power consumption.
- ❖ To adjust the LCD screen brightness, set the <LCD Brightness> in System Settings mode. ➡page 77
- ❖ The LCD monitor brightness will not affect the brightness of the recording.
- ❖ If you are recording with the LCD monitor closed, the built-in microphone will not be facing forward, which can cause deterioration of the sound strength. We recommend recording with the LCD screen open.

Movie Mode : Recording

Zooming In and Out

Zooming allows you to change the size of the subject captured in a scene. You can take advantage of the 10x optical electro motion zoom lens.

1. Press the [POWER] button to turn on the Sports Camcorder.

- ◆ The Movie Record screen appears.
- ◆ You can select Movie mode or Previous mode as the start-up mode in System Settings. ➔page 83

2. Press the [Record/Stop] button to start recording.



Slide the [W/T] switch up to zoom out.

- The subject's size is reduced, and you can record movies as if you were far away from the subject.
- On the zoom indicator in the LCD screen, the arrow moves to W.
- The smallest rate of zoom out is the default rate (original resolution of the subject).



Slide the [W/T] switch down to zoom in.

- The subject is larger, and you can record movies as if you were close to the subject.
- On the zoom indicator the arrow moves to T.
- The largest optical zoom ratio is 10x.

Zoom Out



Zoom In



[Notes]

- ❖ Frequent use of zooming may result in higher battery power consumption.
- ❖ Optical zoom preserves the image quality.
- ❖ Refer to page 48 to read about Digital Zoom.

Movie Mode : Playing

Playing Movie Files on the LCD monitor

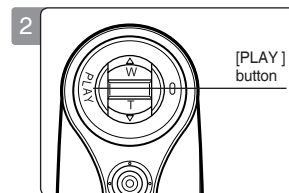
You can view playback of movie files on the LCD monitor.

1. Press the [POWER] button to turn on the Sports Camcorder.
 - ◆ The Movie Record screen appears.
2. Press the [PLAY] button or [Joystick(OK)].
 - ◆ Switches to Movie Play mode.
3. Move the [Joystick] left / right to find the movie file you want to view.
 - ◆ Each movement of the [Joystick] goes to the previous/next movie.
4. Press the [PLAY]button or [Joystick(OK)] to play the movie file you want.
 - ◆ Each time you press the [PLAY] button or [Joystick(OK)], play or pause is selected repeatedly.

[Notes]

- ❖ To adjust volume, move the [Joystick] up/down during playback.
- ❖ If there is no file stored in view, the message <No Files...> appears.
- ❖ When the earphones, Audio / Video cable or *External Camera Module is connected to the Sports Camcorder, the built-in speaker will automatically turn off.

*: VP-X300L only



ENGLISH

Movie Mode : Playing

Playing Multiple Movie Files

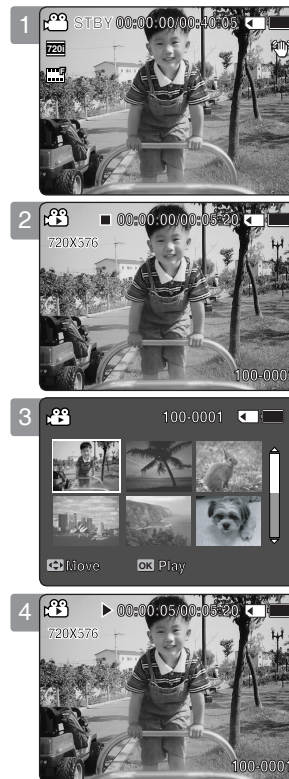
Using the [W/T] switch in Movie Play mode, you can display multiple images on the LCD monitor. You can also select and play the desired movie file in a multi-view screen.

1. Press the [POWER] button to turn on the Sports Camcorder.
 - ◆ The Movie Record screen appears.
2. Press the [PLAY] button or [Joystick(OK)] and move the [W/T] switch to W(WIDE).
 - ◆ The Multi-view screen appears.
3. Move the [Joystick] to left / right / up / down to find the movie file you want to play.
4. Press the [PLAY] button or [Joystick(OK)] to play the movie file you want.
 - ◆ Each time you press the [PLAY] button or [Joystick(OK)], play or pause is selected repeatedly.

[Notes]

- ❖ If there is no file stored to view, the message <No Files...> appears.
- ❖ When the earphones, Audio / Video cable or *External Camera Module is connected to the Sports Camcorder, the built-in speaker will automatically turn off.

*: VP-X300L only



Movie Mode : Playing

Controls used to play the movie file

[PLAY] button or [Joystick(OK)]: Play or pause the movie file

[W] switch: The Multi-view screen appears.

[Joystick](left): In Movie Play mode: Press it to move to previous file.

Press and hold it during playback to use RPS (Reverse Playback Search) function.

(RPS rate: 2x→4x→8x→16x→32x→64x→128x)

[Joystick](right): In Movie Play mode: Press it to move to next file.

Press and hold it during playback to use FPS (Forward Playback Search) function.

(FPS rate: 2x→4x→8x→16x→32x→64x→128x)

In Movie Play mode: Press and hold it to play slowly when paused.

Press it to move to the next frame when paused.

Adjusting the Sound

1. Press the [PLAY] button or [Joystick(OK)] to play the movie file in Movie Play mode.

2. Move the [Joystick] up to increase the volume.

- ◆ Each time you move the [Joystick] up, the volume bar increases and the sound level will get louder.
- ◆ The volume bar disappears after 1~2 seconds.

3. Move the [Joystick] down to decrease the volume.

- ◆ Each time you move the [Joystick] down, the volume bar decreases and the sound level will get quieter.
- ◆ The volume bar disappears after 1~2 seconds.

[Notes]

- ❖ You can adjust the volume up to 10 steps.
- ❖ You can also play the movie file on a TV screen by connecting the Sports Camcorder to a TV. ➔page 100
- ❖ A video codec is required to play the movie files recorded on the Sports Camcorder on a computer. Install the software provided in the Software CD to have the CODEC automatically installed in the system. If you do not have the CD, search the product model name in the Download Centre on the Samsung Electronics home page (www.samsung.com) to get the CODEC installation file. ➔page 97



Movie Mode : Setting the Recording Options

Setting the Movie Size

You can set the movie files size. The file storage capacity depends on the memory capacity and movie file size.

1. Press the [POWER] button to turn on the Sports Camcorder.
 - ◆ The Movie Record screen appears.
2. Press the [MENU] button.
 - Move the [Joystick] left / right to select <Size>.
3. Move the [Joystick] up / down to select an option, and then press the [Joystick(OK)].
 - ◆ Available options are: <720x576> / <352X288>
4. Press the [MENU] button to exit the menu.
 - ◆ The selected function icon is displayed.

[Notes]

- ❖ If <TV> is selected in <Record Mode>, the size is set to 720i only.
- ❖ If <PC> is selected in <Record Mode>, the size is set to 720p or 352p.
- ❖ Regarding detailed image capacity. ➡ page 30.
- ❖ Higher resolution requires more memory space, which results in shorter maximum recording time.
- ❖ When the screen size is set to 352(352X288), it is played back in smaller size than 720(720X576) on PC.
- ❖ While the menu screen is displayed, pressing the [Record / Stop] button will move to Movie Record mode.



Movie Mode : Setting the Recording Options

Setting the Movie Quality

You can set the movie file's quality. The files storage capacity depends on the memory capacity and movie file quality.

1. Press the [POWER] button to turn on the Sports Camcorder.
 - ◆ The Movie Record screen appears.
2. Press the [MENU] button.
Move the [Joystick] left / right to select <Quality>.
3. Move the [Joystick] up / down to select an option, and then press the [Joystick(OK)].
 - ◆ Available options are: <Super Fine> / <Fine> / <Normal>
4. Press the [MENU] button to exit the menu.
 - ◆ The selected function icon is displayed.

[Notes]

- ❖ Regarding detailed image capacity. ➔page 30.
- ❖ While the menu screen is displayed, pressing the [Record / Stop] button will move to Movie Record mode.



Movie Mode : Setting the Recording Options

Setting the White Balance

The White Balance may vary depending on the lighting conditions.
The White Balance is used to preserve natural colours under different lighting conditions.

1. Press the [POWER] button to turn on the Sports Camcorder.
 - ◆ The Movie Record screen appears.
2. Press the [MENU] button.
Move the [Joystick] left / right to select <White Balance>.
3. Move the [Joystick] up / down to select an option, and then press the [Joystick(OK)].
 - ◆ To set Custom, frame your Sports Camcorder on a white area (such as a wall), filling the LCD monitor with white colour. Press the [Joystick(OK)] to set.

Auto	Automatically sets according to the recording environment.
Daylight	Adjusts the colour according to daylight/indoor, outdoor light
Fluorescent	Suitable for a fluorescent light environment.
Tungsten	Suitable for an incandescent light environment.
Custom	You can adjust the white balance as you wish based on the recording environment.

4. Press the [MENU] button to exit the menu.
 - ◆ The selected function icon is displayed.
 - ◆ If <Auto> is selected, no icon will be displayed.

[Notes]

- ❖ When recording outdoors, the <Auto> setting will allow you to achieve the best results.
- ❖ As the lighting conditions change, set the appropriate white balance before recording.
- ❖ The subject used for <Custom> should be white colour. If not, the colour balance will not be natural.
- ❖ While the menu screen is displayed, pressing the [Record / Stop] button will move to Movie Record mode.



Movie Mode : Setting the Recording Options

Setting the Program AE (Programmed Auto Exposure)

Program AE modes are preset automatic exposure modes based upon an internal computer programme. It allows you to adjust the aperture setting to suit different conditions.

1. Press the [POWER] button to turn on the Sports Camcorder.

- ◆ The Movie Record screen appears.

2. Press the [MENU] button.

Move the [Joystick] left / right to select <Program AE>.

3. Move the [Joystick] up / down to select an option, and then press the [Joystick(OK)].

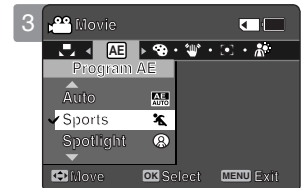
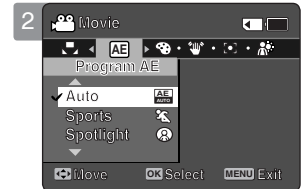
Auto	Auto balances between the subject and background to get the best result. The shutter speed automatically varies from 1/50 to 1/250 per second depending on the scene.
Sports	For recording fast-moving people or objects. It is suitable for sports events and recording outside in the car.
Spotlight	Compensates for a subject that appears too bright under strong direct light such as spotlight. It is suitable for concerts and school performances.
Sand/Snow	Use when the light is very strong such as on the beach or in the snow.

4. Press the [MENU] button to exit the menu.

- ◆ The selected function icon is displayed.
- ◆ If <Auto> is selected, no icon will be displayed.

[Note]

- ❖ While the menu screen is displayed, pressing the [Record / Stop] button will move to Movie Record mode.



ENGLISH

Movie Mode : Setting the Recording Options

Setting the Effect

You can apply various digital effects to your recording.

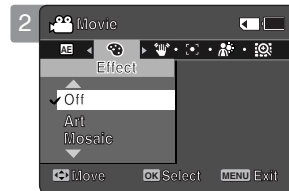
1. Press the [POWER] button to turn on the Sports Camcorder.
 - ◆ The Movie Record screen appears.
2. Press the [MENU] button.
Move the [Joystick] left / right to select <Effect>.
3. Move the [Joystick] up / down to select an option, and then press the [Joystick(OK)].

Off	Cancels the <Effect>.
Art	Adds artistic effects to your movie file.
Mosaic	A mosaic overlay appears on your movie file.
Sepia	The image is displayed in sepia colour similar to that of an old photograph.
Negative	Reverses the colours, creating the look of a negative.
Mirror	This mode cuts the image in half using a Mirror effect.
B&W	Changes the images into Black and White.

4. Press the [MENU] button to exit the menu.
 - ◆ The selected effect and icon are displayed.
 - ◆ If <Off> is selected, no icon will be displayed.

[Note]

- ❖ While the menu screen is displayed, pressing the [Record / Stop] button will move to Movie Record mode.



Movie Mode : Setting the Recording Options

Setting the EIS (Electronic Image Stabilizer)

The Electrical Image Stabilizer is a function that compensates for hand shake and other movements while recording.

EIS provides a more stable image when:

- ◆ Recording while zooming
- ◆ Recording small objects
- ◆ Recording while walking or moving
- ◆ Recording through the window of a moving vehicle

1. Press the [POWER] button to turn on the Sports Camcorder.

- ◆ The Movie Record screen appears.


2. Press the [MENU] button.

Move the [Joystick] left / right to select <EIS>.

3. Move the [Joystick] up / down to select an option, and then press the [Joystick(OK)].

- ◆ <On>: Enables EIS function.
- ◆ <Off>: Disables EIS function.

4. Press the [MENU] button to exit the menu.

- ◆ If you select <On>, the EIS icon () is displayed.
- ◆ If you select <Off>, no icon is displayed.

[Notes]

- ❖ Movie recording using the external camera module does not support <EIS> function. (VP-X300L only)
- ❖ While the menu screen is displayed, pressing the [Record / Stop] button will move to Movie Record mode.



ENGLISH

Movie Mode : Setting the Recording Options

Setting the Focus

You can set the focus depending on the subject or environment. In most situations, it is best to use the AF(Auto Focus).

1. Press the [POWER] button to turn on the Sports Camcorder.
 - ◆ The Movie Record screen appears.
2. Press the [MENU] button.
Move the [Joystick] left / right to select <Focus>.
3. Move the [Joystick] up / down to select an option, and then press the [Joystick(OK)].
 - ◆ <AF>: Set the focus automatically.
 - ◆ <MF>: Set the focus manually.
4. Press the [MENU] button to exit the menu.
 - ◆ The selected function icon is displayed.
 - ◆ If you select <AF>, no icon is displayed.

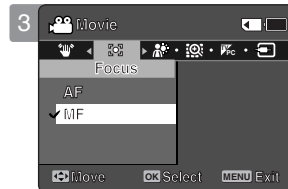
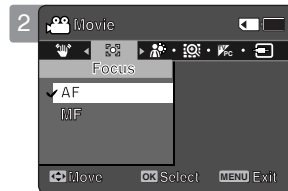
Manual Focus <MF>

Adjust the focus by moving the [Joystick] up/down to zoom in or out manually.

- ◆ When a picture contains objects that are both close and far away from the Sports Camcorder.
- ◆ When a person is enveloped in fog or surrounded by snow.

[Notes]

- ❖ The focus is set to <AF> automatically when the Sports Camcorder is turned off.
- ❖ While the menu screen is displayed, pressing the [Record / Stop] button will move to Movie Record mode.



Movie Mode : Setting the Recording Options

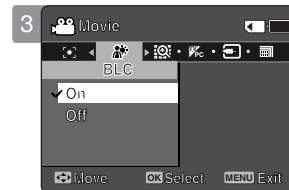
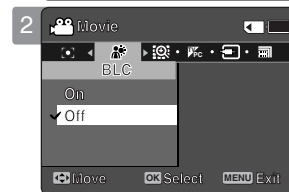
Setting the BLC (Backlight Compensation)

The Backlight Compensation function helps to make the subject brighter when the subject is in front of a window or the subject is too dark to distinguish. You can use this function when using the Sports Camcorder in bright or snowy backgrounds.

1. Press the [POWER] button to turn on the Sports Camcorder.
 - ◆ The Movie Record screen appears.
2. Press the [MENU] button.
Move the [Joystick] left / right to select <BLC>.
3. Move the [Joystick] up / down to select an option, and then press the [Joystick(OK)].
 - ◆ <On>: Set the BLC function.
 - ◆ <Off>: Cancel the BLC function.
4. Press the [MENU] button to exit the menu.
 - ◆ The selected function () icon is displayed.
 - ◆ If you select <Off>, no icon is displayed.

[Notes]

- ❖ The BLC is set to <Off> when the Sports Camcorder is turned off.
- ❖ While the menu screen is displayed, pressing the [Record / Stop] button will move to Movie Record mode.



Movie Mode : Setting the Recording Options

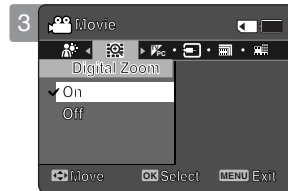
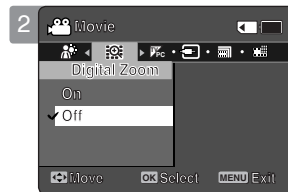
Setting the Digital Zoom

Zooming more than 10x is achieved digitally, up to 100X when combined with optical zoom. The Digital Zoom processes data to enlarge the centre portion of the image to fill the frame. It may produce a less detailed and slightly grainy picture.

1. Press the [POWER] button to turn on the Sports Camcorder.
 - ◆ The Movie Record screen appears.
2. Press the [MENU] button.
Move the [Joystick] left / right to select <Digital Zoom>.
3. Move the [Joystick] up / down to select an option, and then press the [Joystick(OK)].
 - ◆ <On>: Enables digital zoom. Attempts to zoom in more than 10x will automatically apply digital zooming. (up to 100x)
 - ◆ <Off>: Disables digital zoom. Only optical zoom 10x will be supported for zooming
4. Press the [MENU] button to exit the menu.
 - ◆ When using the [W/T] switch, a digital zoom indicator appears on the screen.

[Note]

- ❖ While the menu screen is displayed, pressing the [Record / Stop] button will move to Movie Record mode.



Movie Mode : Setting the Recording Options

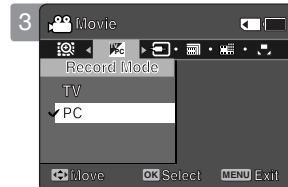
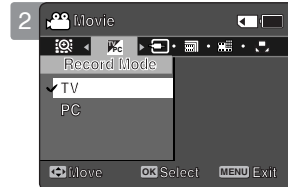
Setting the Record Mode

You can set the proper record mode before starting movie file recording.

1. Press the [POWER] button to turn on the Sports Camcorder.
 - ◆ The Movie Record screen appears.
2. Press the [MENU] button.
 - Move the [Joystick] left / right to select <Record Mode>.
3. Move the [Joystick] up / down to select an option, and then press the [Joystick(OK)].
 - ◆ <TV>: The system generates clear images when played back on TV.
 - ◆ <PC>: The system generates clear images when played back on PC.
 - ◆ We recommend copying the file onto a PC or connecting the Sports Camcorder to a TV for a better playback picture.
4. Press the [MENU] button to exit the menu.
 - ◆ If you select <TV>, <i> is displayed with size icon.
 - ◆ If you select <PC>, <p> is displayed with size icon.

[Notes]

- ❖ If <TV> is selected as the Record Mode, the size is set to 720i only.
- ❖ If <PC> is selected as the Record Mode, the size is set to 720p or 352p.
- ❖ When the size is set to 352(352X288), <PC> is automatically selected for movie files recording.
- ❖ While the menu screen is displayed, pressing the [Record / Stop] button will move to Movie Record mode.



ENGLISH

Movie Mode : Setting the Recording Options

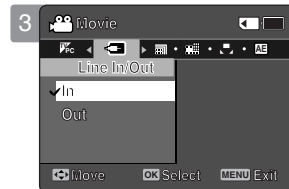
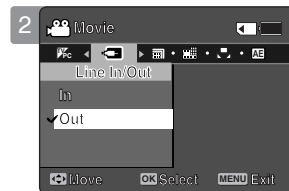
Setting the Line In/Out

You can record or play back the contents of the the Sports Camcorder (a memory card) onto an external device and vice versa. ➔pages 100~102

1. Press the [POWER] button to turn on the Sports Camcorder.
 - ◆ The Movie Record screen appears.
2. Press the [MENU] button.
Move the [Joystick] left / right to select <Line In/Out>.
3. Move the [Joystick] up / down to select an option, and then press the [Joystick(OK)].
 - ◆ <In>: Select this when recording the contents of an external device into the the Sports Camcorder (a memory card).
 - ◆ <Out>: Select this when recording or playing back the contents of the the Sports Camcorder (a memory card) onto an external device.
4. Press the [MENU] button to exit the menu.
 - ◆ The Sports Camcorder is set to the selected setting.

[Note]

- ❖ While the menu screen is displayed, pressing the [Record / Stop] button will move to Movie Record mode.



Movie Mode : Setting the Viewing Options

Deleting Movie Files

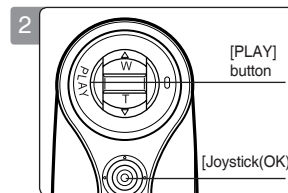
You can delete saved movie files.

1. Press the [POWER] button to turn on the Sports Camcorder.

- ◆ The Movie Record screen appears.

2. Press the [PLAY] button or [Joystick(OK)].

- ◆ Switches to Movie Play mode.
- ◆ Move to the desired movie file, using the [Joystick].



Deleting a Movie File in Full Screen-View

3. Press the [DELETE] button on the LCD monitor.

4. Select an option by moving the [Joystick] up / down and then press the [Joystick(OK)].

- ◆ <OK>: Deletes the selected movie file.
- ◆ <Cancel>: Cancels the deletion.



Deleting Movie Files in Multi-View

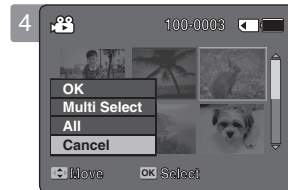
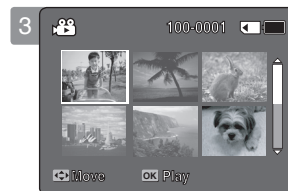
3. Move the [W/T] switch to W (WIDE).

- ◆ The screen switches to multi-view.

4. Press the [DELETE] button on the LCD monitor.

5. Select an option by moving the [Joystick] up / down and then press the [Joystick(OK)].

- ◆ <OK>: Deletes the selected movie file using the [Joystick(OK)].
- ◆ <Multi Select>: Multiple movie files can be selected using the [Joystick(OK)].
 < ✓ > indicator appears on the selected files.
 Press the [PLAY] button to delete.
- ◆ <All>: All movie files will be deleted.
- ◆ <Cancel>: Cancels the deletion.



[Notes]

- ❖ Once deleted, a file can not be restored.
- ❖ Locked files will not be deleted.
- ❖ While the menu screen is displayed, pressing the [Record / Stop] button will move to Movie Record mode.

Movie Mode : Setting the Viewing Options

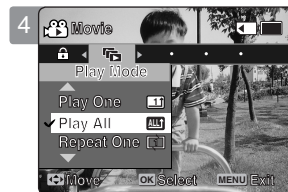
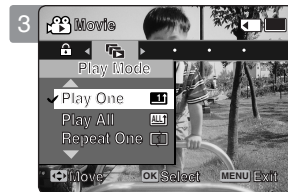
Setting the Play Mode

You can play all files continuously or play the selected file only. You can also set the repeat option for all files.

1. Press the [POWER] button to turn on the Sports Camcorder.
 - ◆ The Movie Record screen appears.
2. Press the [PLAY] button or [Joystick(OK)].
 - ◆ Switches to Movie Play mode.
3. Press the [MENU] button.
 - Move the [Joystick] left / right to select <Play Mode>.
4. Move the [Joystick] up / down to select an option, and then press the [Joystick(OK)].
 - ◆ <Play One>: The selected movie file will be played.
 - ◆ <Play All>: Plays back from the selected file to the last file.
 - ◆ <Repeat One>: The selected movie file will be played repeatedly.
 - ◆ <Repeat All>: All movie files will be played repeatedly.
5. Press the [MENU] button to exit the menu.
 - Press the [PLAY] button.
 - ◆ The selected option will be applied.

[Note]

- ❖ While the menu screen is displayed, pressing the [Record / Stop] button will move to Movie Record mode.



Movie Mode : Setting the Viewing Options

Locking Movie Files

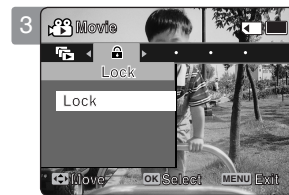
You can lock saved important movie files from accidental deletion. Locked files will not be deleted unless you release the lock or format the memory.

1. Press the [POWER] button to turn on the Sports Camcorder.

- ◆ The Movie Record screen appears.

2. Press the [PLAY] button or [Joystick(OK)].

- ◆ Switches to Movie Play mode.
- ◆ Move to the desired movie file, using the [Joystick].



Locking a Movie File in Full Screen-View

3. Press the [MENU] button.

- ◆ Move the [Joystick] left / right to select <Lock>.

4. Press the [Joystick(OK)] to lock.

- ◆ The selected movie file is locked.



Locking Movie Files in Multi-View

3. Move the [W/T] switch to W (WIDE).

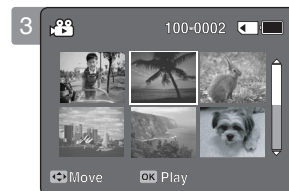
- ◆ The screen switches to multi-view.

4. Press the [MENU] button.

- ◆ Move the [Joystick] left / right to select <Lock>.

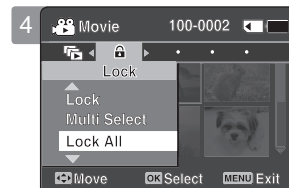
5. Move the [Joystick] up / down to select an option, and then press the [Joystick(OK)].

- ◆ <Lock>: Locks the selected movie file using the [Joystick(OK)].
- ◆ <Multi Select>: Multiple movie files can be selected using the [Joystick(OK)].
 < <lock icon> > indicator appears on the selected files.
 Press the [PLAY] button to lock.
- ◆ <Lock All>: All movie files are locked.
- ◆ <Unlock All>: Unlocks all movie files.



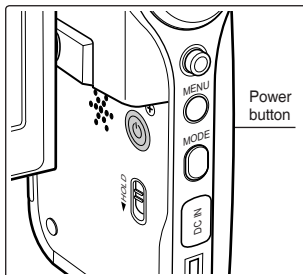
[Notes]

- ❖ The < <lock icon> > icon is displayed on the locked file.
- ❖ While the menu screen is displayed, pressing the [Record / Stop] button will move to Movie Record mode.

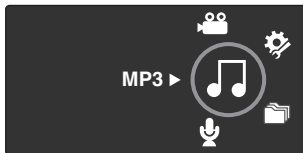


How to set to MP3 mode

1. Press the [POWER] button to turn on the Sports Camcorder.



2. Set the **MP3** mode by pressing the [MODE] button.



2 MP3 Mode

Storing MP3 in the Sports Camcorder	55
Copying MP3 Files to the Sports Camcorder	55
Playing	56
Playing MP3 Files	56
Setting the MP3 Play Options	57
Deleting MP3 Files	57
Setting the Repeat Play	58
Setting the Equalizer	59
Locking MP3 Files	60

- ◆ Save important data / recordings separately on other media, to avoid accidental loss due to a system failure or other reasons.

MP3 Mode : Storing MP3 Files in the Sports Camcorder

Copying MP3 Files to the Sports Camcorder

You can copy MP3 files from a PC to the Sports Camcorder while connected to the PC with a USB cable.

Before your start!

- ◆ You can copy the MP3 files when <USB Mode> sets to <Mass Storage>
 ↳ page 73
1. Press the [POWER] button to turn on the Sports Camcorder.
 - ◆ The Movie Record screen appears.
 2. Connect the Sports Camcorder to the PC using the USB cable provided.
 - ◆ A - Connect the USB cable to the Sports Camcorder.
 - ◆ B - Connect the other end of the USB cable to the PC.
 3. Double-click the new removable drive to open.
 4. Select the MUSIC folder and double-click to enter.
 5. Drag and drop the MP3 file from your PC into the MUSIC folder.
 - ◆ The maximum music memory capacity is 2000 MP3 files.

Disconnecting USB Connection

After completing the data transfer, you must disconnect the cable in the following way.

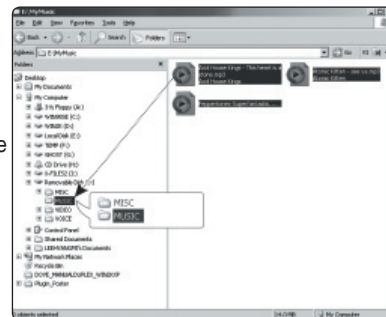
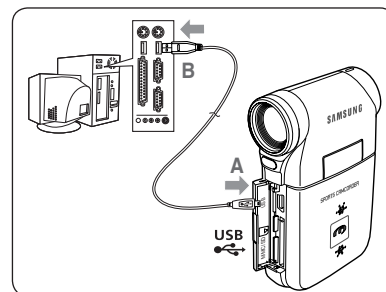
1. Select the removable disk icon and click the right mouse button to select 'Safely Remove Hardware'.
2. Select 'Stop' and disconnect the USB cable when the pop-up screen disappears.

[Warning]

- ❖ Copying and redistributing of MP3 files may violate the copyright law.
- ❖ You cannot create a new folder on your Sports Camcorder.

[Notes]

- ❖ You can copy a folder on your Sports Camcorder.
- ❖ To see MP3 file capacity with regards to the Sports Camcorder's memory capacity.
 ↳ page 31.
- ❖ It is recommended to use an AC Power Adapter during the file transfer to avoid unintended power outage due to low battery power.
- ❖ According to the PC type, Pop-up dialog for Removable disk may appear when USB connects.
- ❖ The illustrations may differ from that shown depending on the Windows O/S.



MP3 Mode : Playing

Playing MP3 Files

You can play back stored MP3 files.

1. Press the [POWER] button to turn on the Sports Camcorder.
 - ◆ The Movie Record screen appears.
2. Set the MP3 mode by pressing the [MODE] button.
 - ◆ The MP3 playlist appears.
 - ◆ If there is no MP3 file stored, the message <No Files...> appears.
3. Select an MP3 file to play by moving the [Joystick] up / down, and then press the [Joystick(OK)].
4. The selected MP3 file is played back.
 - ◆ Each time you press the [PLAY] button or [Joystick(OK)], play or pause is selected repeatedly.
 - ◆ To adjust volume, move [Joystick] up / down.
Volume indicator appears and disappears after few seconds.

Using the Joystick (left/right)

Move the [Joystick] left

- ◆ Within 2 seconds after starting playback - Previous file plays.
- ◆ In Pause/Stop mode - Previous file appears.
- ◆ 2 seconds after starting playback - Current file starts again.

Move the [Joystick] right

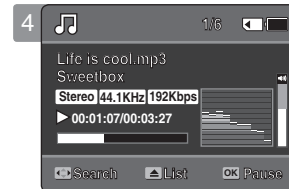
- ◆ During playback - The next file plays.
- ◆ In Pause/Stop mode - The next file appears.
- ◆ During playback, press and hold [Joystick(OK)] left / right to forward or reverse search the currently playing MP3 file.

Setting to Hold - [MP3/ *External Camera Module HOLD] switch

If you slide the [MP3/ *External Camera Module HOLD] switch down, all buttons except the Power button and Volume control are locked. The [MP3/ *External Camera Module HOLD] switch operates only in the MP3 mode or when connecting *External Camera Module.

[Notes]

- ❖ The MP3 file with tag information will display the artist name. MP3 files with no tag information will leave the item blank.
 - ❖ If a broken file name is displayed, try renaming it on a PC.
 - ❖ When the language set is not the same as the MP3 file's tag information language, the Artist information may not display correctly.
 - ❖ When the earphones, Audio/Video cable or *External Camera Module cable is connected to the Sports Camcorder, the built-in speaker will turn off automatically.
 - ❖ The Sports Camcorder only supports MP3 file format.
 - ❖ Damaged or non-standard MP3 files may not display properly or fail to play back.
 - ❖ Playback will fail to start if the first file is damaged.
 - ❖ The title may not be displayed if the language is not supported or in Chinese.
 - ❖ MP3 files with VBR setting will appear as VBR on the LCD monitor and its play time and recording time may differ from the displayed diagram.
 - ❖ If you play a music file of which the title is too long, the title is scrolled.
 - ❖ Supported bitrates for MP3 files is 8Kbps-320Kbps and VBR.
- *: VP-X300L only



MP3 Mode : Setting the MP3 Play Options

Deleting MP3 Files

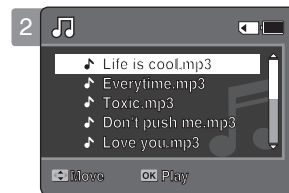
You can delete a selected MP3 file or group of MP3 files.

1. Press the [POWER] button to turn on the Sports Camcorder.

- ◆ The Movie Record screen appears.

2. Set the MP3 mode by pressing the [MODE] button.

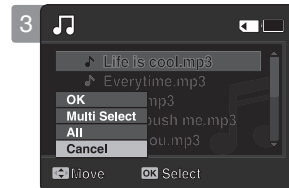
- ◆ The MP3 playlist appears.
- ◆ Move to the desired MP3 file, using the [Joystick].



Deleting MP3 Files in MP3 playlist

3. Press the [DELETE] button on the LCD monitor in pause mode. Select an option by moving the [Joystick] up / down and then press the [Joystick(OK)].

- ◆ <OK>: Deletes the selected MP3 file.
- ◆ <Multi Select>: Multiple MP3 files can be selected using the [Joystick(OK)].
< ✓ > indicator appears on the selected files. Press the [PLAY] button.
- ◆ <All>: All MP3 files will be deleted.
- ◆ <Cancel>: Cancels the deletion.



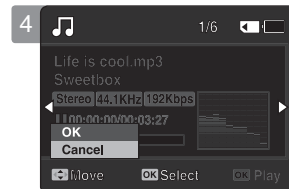
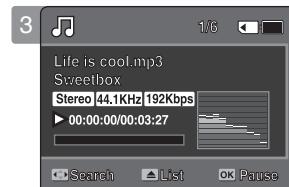
Deleting an MP3 File in Full screen

3. Press the [PLAY] button or [Joystick(OK)].

- ◆ The selected MP3 file is played.

4. Press the [DELETE] button on the LCD monitor in pause mode. Select an option by moving the [Joystick] up / down and then press the [Joystick(OK)].

- ◆ <OK>: Deletes the selected MP3 file.
- ◆ <Cancel>: Cancels the deletion.



[Notes]

- ❖ Locked files will not be deleted.
- ❖ You cannot access the menu during playback.
- ❖ If you press the [Record/Stop] button in MP3 mode, the Sports Camcorder switches to Movie Record mode.

MP3 Mode : Setting the MP3 Play Options

Setting the Repeat Play

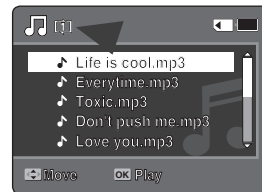
You can repeat a selected MP3 file or a group of MP3 files, or play the MP3 files at random.

1. Press the [POWER] button to turn on the Sports Camcorder.
 - ◆ The Movie Record screen appears.
2. Set the **MP3** mode by pressing the [MODE] button.
 - ◆ The MP3 playlist appears.
3. Press the [MENU] button in pause mode. Move the [Joystick] left / right to select <Repeat>.
4. Select an option by moving the [Joystick] up / down and then press the [Joystick (OK)].
 - ◆ <Off>: No repeat, plays each title once in the order from the selected MP3 file.
 - ◆ <Repeat One>: One selected MP3 file will play repeatedly.
 - ◆ <Repeat Folder>: All files in the folder will play repeatedly.
 - ◆ <Repeat All>: All MP3 files will play through in order and start again from the beginning.
 - ◆ <Shuffle Folder>: All files in the folder will play at random.
 - ◆ <Shuffle All>: All MP3 files will play in random order once.
5. Press the [MENU] button to exit the menu.
 - ◆ Move the MP3 file of the desired folder using the [Joystick].
 - ◆ When the MP3 file plays back, the selected option will be applied.
 - ◆ The selected function icon is displayed.
 - ◆ If you select <Off>, no icon is displayed.

[Notes]

- ❖ When the earphones, Audio/Video cable or *External Camera Module cable is connected to the Sports Camcorder, the built-in speaker will not operate.
- ❖ You cannot access the menu during playback.
- ❖ If you press the [Record/Stop] button in MP3 mode, the Sports Camcorder switches to Movie Record mode.

*: VP-X300L only



MP3 Mode : Setting the MP3 Play Options

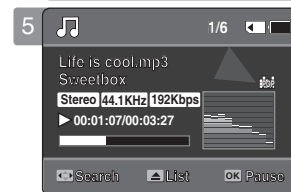
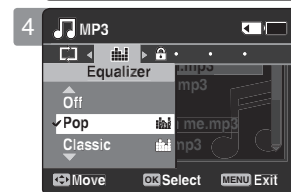
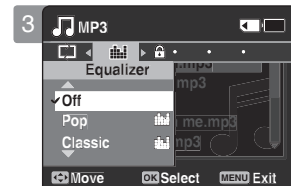
Setting the Equalizer

You can choose an Equalizer mode for different types of music.

1. Press the [POWER] button to turn on the Sports Camcorder.
 - ◆ The Movie Record screen appears.
2. Set the *MP3* mode by pressing the [MODE] button.
 - ◆ The MP3 playlist appears.
3. Press the [MENU] button in pause mode. Move the [Joystick] left / right to select <Equalizer>.
 - ◆ <Off> / <Pop> / <Classic> / <Jazz>
4. Select an option by moving the [Joystick] up / down and then press the [Joystick (OK)].
 - ◆ <Off> / <Pop> / <Classic> / <Jazz>
5. Press the [MENU] button to exit the menu.
 - ◆ The selected option is applied.
 - ◆ If you select <Off>, no icon is displayed.

[Notes]

- ❖ You cannot access the menu during playback.
- ❖ If you press the [Record/Stop] button in MP3 mode, the Sports Camcorder switches to Movie Record mode.



ENGLISH

MP3 Mode : Setting the MP3 Play Options

Locking MP3 Files

You can lock saved important MP3 files from accidental deletion. Locked files will not be deleted unless you release the lock or format the memory.

1. Press the [POWER] button to turn on the Sports Camcorder.
 - ◆ The Movie Record screen appears.
2. Set the MP3 mode by pressing the [MODE] button.
 - ◆ The MP3 playlist appears.
 - ◆ Move to the desired MP3 file, using the [Joystick].

Locking MP3 Files in MP3 playlist

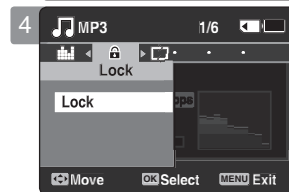
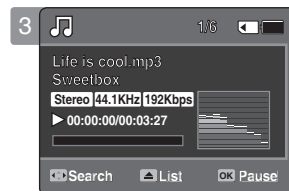
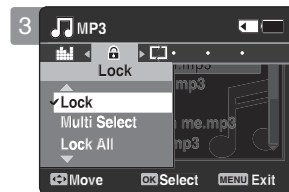
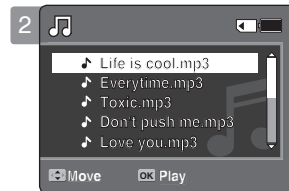
3. Press the [MENU] button in pause mode.
Move the [Joystick] left / right to select <Lock>.
4. Select an option by moving the [Joystick] up / down and then press the [Joystick (OK)].
 - ◆ <Lock>: The selected MP3 file is locked.
 - ◆ <Multi Select>: Multiple MP3 files can be selected using the [Joystick(OK)].
 - < > indicator appears on the selected files. Press the [PLAY] button.
 - ◆ <Lock All>: All MP3 files are locked.
 - ◆ <Unlock All>: Unlocking all MP3 files.

Locking an MP3 File in Full screen

3. Press the [PLAY] button or [Joystick(OK)]
 - ◆ The selected MP3 file is played.
4. Press the [MENU] button in pause mode.
Move the [Joystick] left / right to select <Lock>.
5. Press the [Joystick(OK)].
 - ◆ The selected MP3 file is locked.

[Notes]

- ❖ The icon is displayed on the locked file.
- ❖ You cannot access the menu during playback.
- ❖ If you press the [Record/Stop] button in MP3 mode, the Sports Camcorder switches to Movie Record mode.

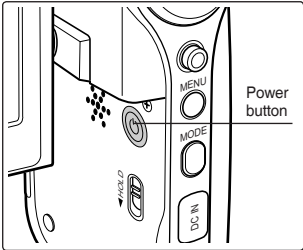


3

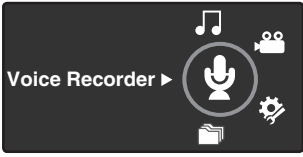
Voice Recorder Mode

How to set to Voice Recorder mode

- 1. Press the [POWER] button to turn on the Sports Camcorder.



- 2. Set the *Voice Recorder* mode by pressing the [MODE] button.



- Recording62
 - Recording Voice Files62
- Playing.....63
 - Playing Voice Files63
- Setting the Voice Play Options64
 - Deleting Voice Files.....64
 - Setting the Play Mode65
 - Locking Voice Files.....66

- ◆ Save important data / recordings separately on other media, to avoid accidental loss due to a system failure or other reasons.

Voice Recorder Mode : Recording

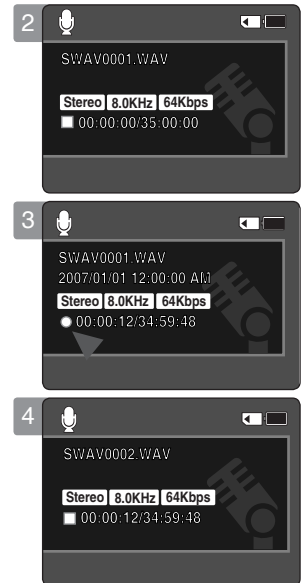
Recording Voice Files

The built-in microphone allows users to record voices without any additional devices.

1. Press the [POWER] button to turn on the Sports Camcorder.
 - ◆ The Movie Record screen appears.
2. Set the *Voice Recorder* mode by pressing the [MODE] button.
 - ◆ The Voice Record screen appears.
3. Press the [Record / Stop] button to start recording.
 - ◆ < ● > icon appears on the screen and starts recording.
4. To stop recording, press the [Record / Stop] button again.

[Notes]

- ❖ Recorded voice files are saved in a list automatically.
- ❖ During voice recording or in the Voice Record mode, the menu is not accessed.
- ❖ If you change to other mode during voice recording , the recording will stop.
- ❖ If you make a recording using the built-in microphone that is blocked up with something, this can cause deterioration of the sound strength and noise on the recording. So make sure that the microphone is not blocked.
- ❖ When you make a voice recording on the Sports Camcorder (using the microphone), you are recommended to do so at a short distance. If the recording is done at a distance, the sound strength or quality may be deteriorated.



Voice Recorder Mode : Playing

Playing Voice Files

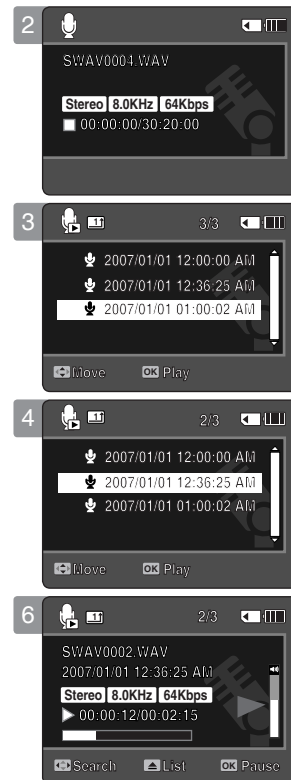
You can play back recorded voice files using the built-in speaker or the earphones.

1. Press the [POWER] button to turn on the Sports Camcorder.
 - ◆ The Movie Record screen appears.
2. Set the *Voice Recorder* mode by pressing the [MODE] button.
 - ◆ The Voice Record screen appears.
3. Press the [PLAY] button or [Joystick(OK)].
 - ◆ The Voice Playlist screen appears.
4. Select a voice file to play by moving the [Joystick] up/down, and then press the [Joystick(OK)].
5. The selected voice file is played back.
 - ◆ To pause playback, press the [Joystick(OK)].
 - ◆ To search backward / forward, move the [Joystick] left / right.
6. To adjust the volume, move the [Joystick] up / down.
 - ◆ Volume indicator appears and disappears after a few seconds.

[Notes]

- ❖ When you record the voice file after you set date&time, the date&time displayed on the LCD monitor indicates the date & time you started to record.
- ❖ When the earphones, Audio/Video cable or *External Camera Module cable is connected to the Sports Camcorder, the built-in speaker will not operate.
- ❖ You cannot access the menu during voice playback.
- ❖ If you want to play a recorded voice file in full screen, slide up the [W/T] switch to display the play list. Select the desired file by moving the [Joystick] up / down and then press the [Joystick(OK)] to play it.
- ❖ While the menu screen is displayed, pressing the [Record / Stop] button will move to Voice Record mode.

*: VP-X300L only

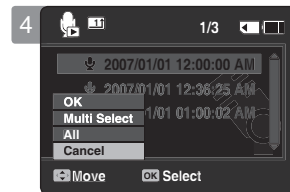
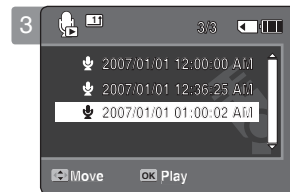
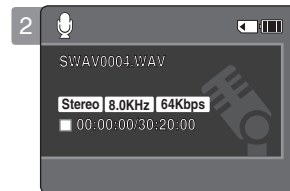


Voice Recorder Mode : Setting the Voice Play Options

Deleting Voice Files

You can delete a selected voice file or a group of voice files.

1. Press the [POWER] button to turn on the Sports Camcorder.
 - ◆ The Movie Record screen appears.
2. Set the *Voice Recorder* mode by pressing the [MODE] button.
 - ◆ The Voice Record screen appears.
3. Press the [PLAY] button or [Joystick(OK)]
 - ◆ The Voice Playlist screen appears.
 - ◆ Move to the desired voice file, using the [Joystick].
4. Press the [DELETE] button on the LCD monitor in pause mode. Select an option by moving the [Joystick] up / down and then press the [Joystick(OK)].
 - ◆ <OK>: Deletes the selected voice file.
 - ◆ <Multi Select>: Multiple voice files can be selected using the [Joystick(OK)]. <✓> indicator appears on the selected files. Press the [PLAY] button.
 - ◆ <All>: All voice files will be deleted.
 - ◆ <Cancel>: Cancels the deletion.



[Notes]

- ❖ Once deleted, a file can not be restored.
- ❖ Locked files will not be deleted.
- ❖ You cannot access the menu during voice playback.
- ❖ While the menu screen is displayed, pressing the [Record / Stop] button will move to Voice Record mode.

Voice Recorder Mode : Setting the Voice Play Options

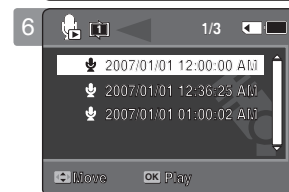
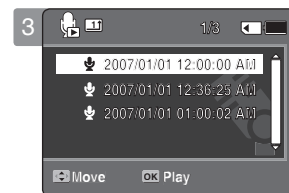
Setting the Play Mode

You can play all files continuously or play the selected file only. You can also set the repeat option.

1. Press the [POWER] button to turn on the Sports Camcorder.
 - ◆ The Movie Record screen appears.
2. Set the *Voice Recorder* mode by pressing the [MODE] button.
 - ◆ The Voice Record screen appears.
3. Press the [PLAY] button or [Joystick(OK)]
 - ◆ Switches to the Voice Playlist screen.
 - ◆ Move to the desired voice file, using the [Joystick].
4. Press the [MENU] button.
Move the [Joystick] left / right to select <Play Mode>.
5. Move the [Joystick] up / down to select an option, and then press the [Joystick(OK)].
 - ◆ <Play One>: The selected voice file will be played.
 - ◆ <Play All>: Plays back from the selected file to the last file.
 - ◆ <Repeat One>: The selected voice file will be played repeatedly.
 - ◆ <Repeat All>: All voice files will be played repeatedly.
6. Press the [MENU] button to exit the menu.
 - ◆ When you play back, the selected option will be applied.
 - ◆ The selected function icon is displayed.

[Notes]


- ❖ You cannot access the menu during voice playback.
- ❖ While the menu screen is displayed, pressing the [Record / Stop] button will move to Voice Record mode.




Voice Recorder Mode : Setting the Voice Play Options

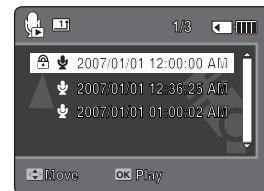
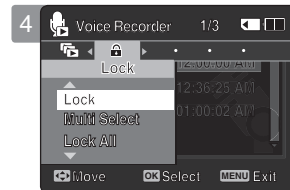
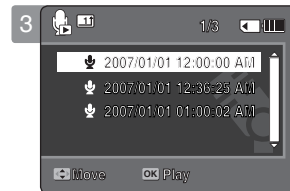
Locking Voice Files

You can lock saved important voice files from accidental erasure. Locked files will not be deleted unless you release the lock or format the memory.

1. Press the [POWER] button to turn on the Sports Camcorder.
 - ◆ The Movie Record screen appears.
2. Set the *Voice Recorder* mode by pressing the [MODE] button.
 - ◆ The Voice Record screen appears.
3. Press the [PLAY] button or [Joystick(OK)]
 - ◆ Switches to the Voice Playlist screen.
 - ◆ Move to the desired voice file, using the [Joystick].
4. Press the [MENU] button.
Move the [Joystick] left / right to select <Lock>.
 - ◆ The Lock menu appears.
5. Move the [Joystick] up / down to select an option, and then press the [Joystick(OK)].
 - ◆ <Lock>: The selected voice file is locked.
 - ◆ <Multi Select>: Multiple voice files can be selected using the [Joystick(OK)].
<  > indicator appears on the selected files. Press [PLAY] button.
 - ◆ <Lock All>: All voice files are locked.
 - ◆ <Unlock All>: Unlocks all voice files.

[Notes]

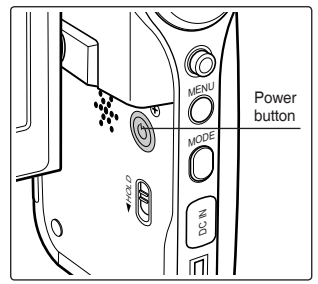
- ❖ The <  > icon is displayed on the locked file.
- ❖ You cannot access the menu during voice playback.
- ❖ While the menu screen is displayed, pressing the [Record / Stop] button will move to Voice Record mode.



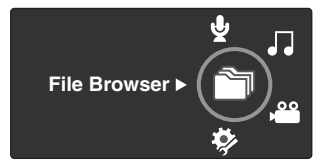
4 Using File Browser

How to set to File Browser mode

1. Press the [POWER] button to turn on the Sports Camcorder.



2. Set the *File Browser* mode by pressing the [MODE] button.



Viewing Files or Folders	68
Deleting Files or Folders.....	69
Locking Files	70
Viewing File Information	71

- ◆ Save important data / recordings separately on other media, to avoid accidental loss due to a system failure or other reasons.

Using File Browser

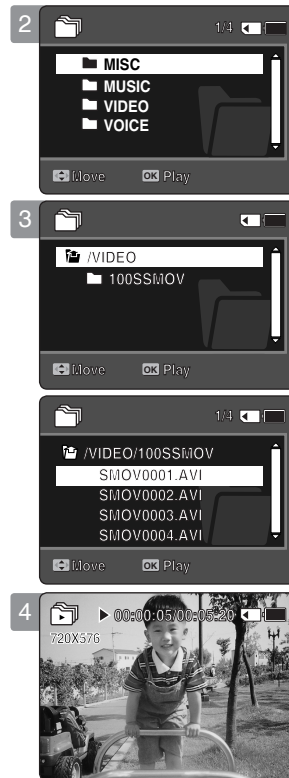
Viewing Files or Folders

You can play back the stored file (AVI, MP3, WAV) in your Sports Camcorder.

1. Press the [POWER] button to turn on the Sports Camcorder.
 - ◆ The Movie Record screen appears.
2. Set the *File Browser* mode by pressing the [MODE] button.
 - ◆ The File Browser screen appears.
3. Select the desired folder or file by moving the [Joystick] up/down and then press the [Joystick(OK)].
 - ◆ Perform these steps repeatedly until the file you want to view appears.
4. The selected file will be played back.

[Notes]

- ❖ If you slide the [W/T] switch to W(WIDE) in play mode, return to the file list screen.
- ❖ If you move the [Joystick] left, the previous folder screen appears.
- ❖ If you press the [Record/Stop] button in File Browser mode, the Sports Camcorder switches to Movie Record mode.



Using File Browser

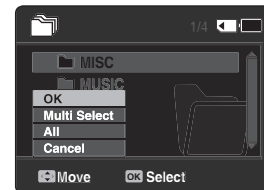
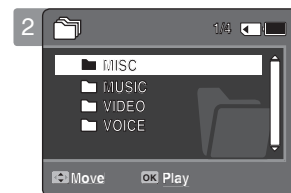
Deleting Files or Folders

You can delete the file (AVI, MP3, WAV) or folders you recorded.

1. Press the [POWER] button to turn on the Sports Camcorder.
 - ◆ The Movie Record screen appears.
2. Set the *File Browser* mode by pressing the [MODE] button.
 - ◆ The File Browser screen appears.
3. Select the desired file or folder by using the [Joystick(OK)].
 - ◆ Move the [Joystick] up/down and press the [Joystick(OK)] repeatedly until the file or folder you want appears.
4. Press the [DELETE] button on the LCD monitor. Select an option by moving the [Joystick] up / down and then press the [Joystick(OK)].
 - ◆ <OK>: The selected file or folder will be deleted.
 - ◆ <Multi Select>: Multiple files or folders will be selected using the [Joystick(OK)]. <✓> indicator appears on the selected files or folders. Press the [PLAY] button.
 - ◆ <All>: All files or folders will be deleted.
 - ◆ <Cancel>: Cancels deleting files or folders.

[Notes]


- ❖ If you slide the [W/T] switch to W(WIDE) in play mode, it returns to the previous screen.
- ❖ Once deleted, a file can not be restored.
- ❖ Locked files will not be deleted.
- ❖ The folder with a locked file will not be deleted. Only unlocked files in the folder will be deleted.
- ❖ If you move the [Joystick] left, the previous folder screen appears.
- ❖ If you press the [Record/Stop] button in File Browser mode, the Sports Camcorder switches to Movie Record mode.




Using File Browser

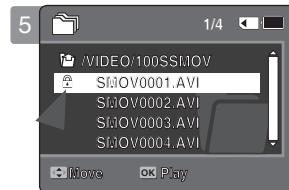
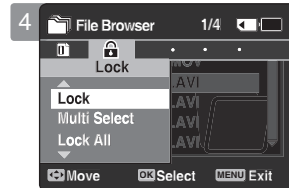
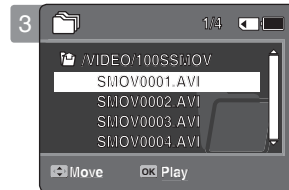
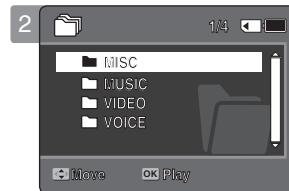
Locking Files

You can lock the important files so they can not be deleted.

1. Press the [POWER] button to turn on the Sports Camcorder.
 - ◆ The Movie Record screen appears.
2. Set the *File Browser* mode by pressing the [MODE] button.
 - ◆ The File Browser screen appears.
3. Select the desired file or folder by using the [Joystick(OK)].
 - ◆ Move the [Joystick] up / down and press the [Joystick(OK)] repeatedly until the file you want appears.
4. Press the [MENU] button.
 - Move the [Joystick] left / right to select <Lock>.
5. Move the [Joystick] up / down to select an option, and then press the [Joystick(OK)].
 - ◆ <Lock>: The selected file is locked.
 - ◆ <Multi Select>: Multiple files can be selected using the [Joystick(OK)].
 - <  > indicator appears on the selected files. Press the [PLAY] button.
 - ◆ <Lock All>: All files are locked.
 - ◆ <Unlock All>: Unlocking all files.

[Notes]

- ❖ You can't lock folders.
- ❖ The  icon is displayed when the file is locked.
- ❖ If you slide the [W/T] switch to W(WIDE) in play mode, return to the file list screen.
- ❖ If you move the [Joystick] left, the previous folder screen appears.
- ❖ If you press the [Record/Stop] button in File Browser mode, the Sports Camcorder switches to Movie Record mode.



Using File Browser

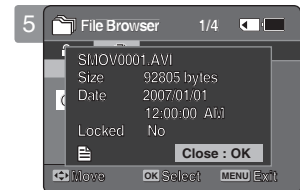
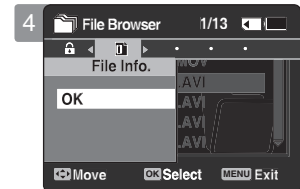
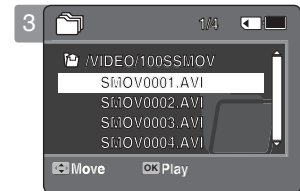
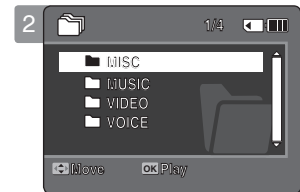
Viewing File Information

You can see the file name, format, size and date.

1. Press the [POWER] button to turn on the Sports Camcorder.
 - ◆ The Movie Record screen appears.
2. Set the *File Browser* mode by pressing the [MODE] button.
 - ◆ The File Browser screen appears.
3. Select the desired file list by using the [Joystick(OK)].
Move the [Joystick] up / down to want to view file information.
 - ◆ Move the [Joystick] up / down and press the [Joystick(OK)] repeatedly until the file list you want appears.
4. Press the [MENU] button.
Move the [Joystick] left / right to select <File Info.>.
5. Press the [Joystick(OK)] to view the file information.
 - ◆ The screen with file name, size, date, locked state appears.
6. Press the [Joystick(OK)] to finish viewing file information.

[Notes]

- ❖ You cannot view folder information. You can only view file information.
- ❖ If you move the [Joystick] left, the previous folder screen appears.
- ❖ If you press the [Record/Stop] button in File Browser mode, the Sports Camcorder switches to Movie Record mode.

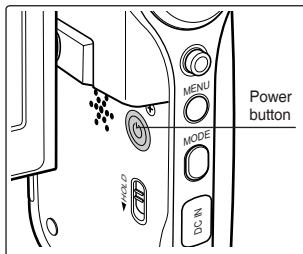


5

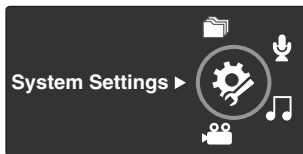
Setting the Sports Camcorder

How to set to System Settings mode

1. Press the [POWER] button to turn on the Sports Camcorder.



2. Set the *System Settings* mode by pressing the [MODE] button.



Setting USB Mode	73
Setting USB Mode.....	73
Setting Memory	74
Setting the File No. Function.....	74
Format.....	75
Viewing Memory Space	76
Adjusting the LCD monitor	77
Adjusting the LCD Brightness	77
Adjusting Date/Time	78
Setting Date&Time	78
Setting Date Format	79
Setting Time Format.....	80
Setting Date/Time Display.....	81
Setting the System Settings	82
Setting the Beep Sound	82
Setting Start-up Mode	83
Resetting the Sports Camcorder.....	84
Selecting Language.....	85
Setting the Auto Shut off	86
Setting the Demonstration Function.....	87
Viewing Version Information	88
Using USB Mode	89
Transferring files to a computer	89
Using the PC Cam Function	90

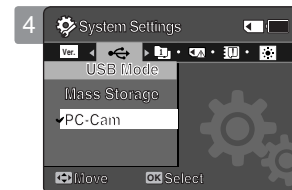
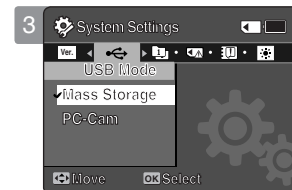
- ◆ Save important data / recordings separately on other media, to avoid accidental loss due to a system failure or other reasons.

Setting the Sports Camcorder : Setting USB Mode

Setting USB Mode

Before connecting your Sports Camcorder to a computer via USB, please set the proper USB mode.

1. Press the [POWER] button to turn on the Sports Camcorder.
 - ◆ The Movie Record screen appears.
2. Set the *System Settings* mode by pressing the [MODE] button.
 - ◆ The System Settings screen appears.
3. Move the [Joystick] left / right to select <USB Mode>.
4. Move the [Joystick] up / down to select an option, and then press the [Joystick(OK)].



Mass Storage	Transferring files from the Sports Camcorder to your computer →page 89
PC-Cam	You can use the Sports Camcorder as a PC camera for video chatting, video conference and other PC camera applications. →page 90

[Notes]

- ❖ By default, manufacturer's setting is the Mass Storage.
- ❖ Before connecting the USB cable, check if the Sports Camcorder is set to the appropriate USB mode you want to use.

Setting the Sports Camcorder : Setting Memory

Setting the File No. Function

You can set the file numbers so that they reset each time the memory card is formatted, or so that they count up continuously.

1. Press the [POWER] button to turn on the Sports Camcorder.

- ◆ The Movie Record screen appears.

2. Set the *System Settings* mode by pressing the [MODE] button.

- ◆ The System Settings screen appears.

3. Move the [Joystick] left / right to select <File No.>.

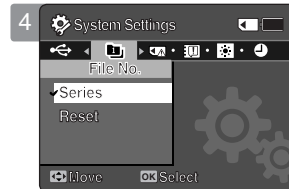
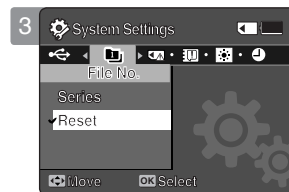
4. Move the [Joystick] up / down to select an option, and then press the [Joystick(OK)].

- ◆ <Series>: Numbering is continuous between the memory cards, so that the first file number assigned on a new memory card is 1 more than the last file number assigned on the previous memory card.
- ◆ <Reset>: When the storage memory is formatted, the file number goes back to its default value (100-0001).

5. After you finish, move to the desired mode by pressing the [MODE] button.

[Note]

- ❖ When you set <File No.> to <Series>, each file is assigned with a different number so as to avoid duplicating file names. It is convenient when you want to manage your files on a PC.



Setting the Sports Camcorder : Setting Memory

Format

You can format the memory card to erase all files.

1. Press the [POWER] button to turn on the Sports Camcorder.
 - ◆ The Movie Record screen appears.
2. Set the *System Settings* mode by pressing the [MODE] button.
 - ◆ The System Settings screen appears.
3. Move the [Joystick] left / right to select <Format>.
4. Press the [Joystick(OK)].
 - ◆ <Start>: Format the memory card.
 - When the [Joystick(OK)] is pressed, the pop-up message appears.
 - Select <OK> or <Cancel> by moving the [Joystick] up / down and then press the [Joystick(OK)].
5. After you finish setting, move to the desired mode by pressing the [MODE] button.

[Warning]

- ❖ Previous information can not be restored after formatting.

[Notes]

- ❖ There is no guarantee on the operation of the memory card which has not been formatted on the Sports Camcorder. Make sure to format the memory card on the Sports Camcorder before using.
- ❖ If the memory card is not inserted, you can't use the format function.
- ❖ A memory card with the protection tab set to lock will not be formatted.



Setting the Sports Camcorder : Setting Memory

Viewing Memory Space

You can check used memory space and total memory space of the memory card.

1. Press the [POWER] button to turn on the Sports Camcorder.

- ◆ The Movie Record screen appears.

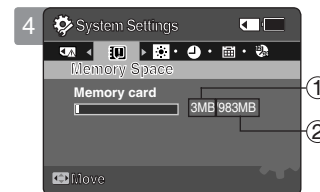
2. Set the *System Settings* mode by pressing the [MODE] button.

- ◆ The System Settings screen appears.

3. Move the [Joystick] left / right to select <Memory Space>.

4. The used memory space and total memory space are displayed.

5. After you viewing memory space, move to the desired mode by pressing the [MODE] button.



Memory Space

- ① Used memory capacity indicator
- ② Total memory capacity indicator

[Notes]

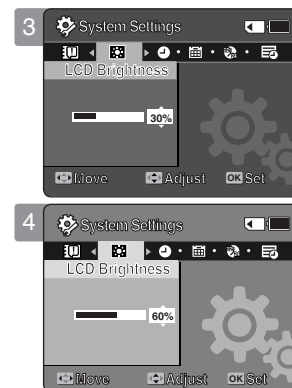
- ❖ System requires a small portion of memory space, actual storage capacity may differ from the printed memory capacity.
- ❖ If the memory card is not inserted, you will see <No Memory Card!> on the LCD monitor.
- ❖ The OSD indicators of this manual are based on memory capacity of 1GB (MMC).

Setting the Sports Camcorder : Adjusting the LCD monitor

Adjusting the LCD Brightness

You can adjust the brightness of the LCD monitor to compensate for ambient lighting conditions.

1. Press the [POWER] button to turn on the Sports Camcorder.
 - ◆ The Movie Record screen appears.
2. Set the *System Settings* mode by pressing the [MODE] button.
 - ◆ The System Settings screen appears.
3. Move the [Joystick] left / right to select <LCD Brightness>.
4. Move the [Joystick] up / down to adjust the brightness, and then press the [Joystick(OK)].
 - ◆ Moving the [Joystick] up will brighten the screen whereas moving it down will darken the screen.
 - ◆ Brightness range: You can adjust the LCD Brightness from 0% to 100%.
5. After you finish setting, move to the desired mode by pressing the [MODE] button.



[Notes]

- ❖ A brighter LCD screen setting consumes more battery power.
- ❖ Adjust the LCD brightness when the ambient lighting is too bright and the monitor is hard to see.
- ❖ LCD Brightness does not affect the brightness of images to be stored.

Setting the Sports Camcorder : Adjusting Date/Time

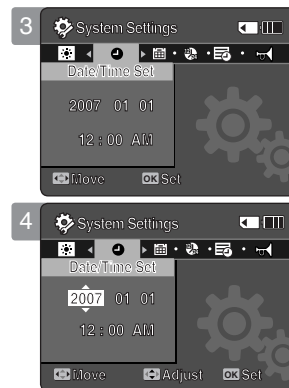
Setting Date&Time

You can set the date/time using this menu.

1. Press the [POWER] button to turn on the Sports Camcorder.
 - ◆ The Movie Record screen appears.
2. Set the *System Settings* mode by pressing the [MODE] button.
 - ◆ The System Settings screen appears.
3. Move the [Joystick] left / right to select <Date/Time Set> and then press the [Joystick(OK)].
4. Set the desired value by moving the [Joystick] up / down.
5. Move to the next item by moving the [Joystick] left / right, and then set values by moving the [Joystick] up / down.
 - ◆ Items are displayed in the order of the date format.
 - ◆ By default, it appears in the order of Year, Month, Date, Hour, Minute and AM/PM.
6. After setting the last item, press the [Joystick(OK)] to finish the setting.
7. After you finish setting, move to the desired mode by pressing the [MODE] button.

[Notes]

- ❖ See page 81 to set the <Date/Time> to display on the LCD.
- ❖ You can set the year up to 2037.



Setting the Sports Camcorder : Adjusting Date/Time

Setting Date Format

You can select the date format to display.

1. Press the [POWER] button to turn on the Sports Camcorder.

- ◆ The Movie Record screen appears.

2. Set the *System Settings* mode by pressing the [MODE] button.

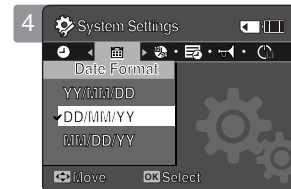
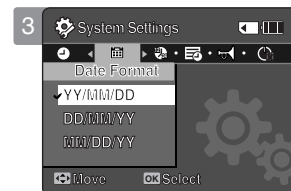
- ◆ The System Settings screen appears.

3. Move the [Joystick] left / right to select <Date Format>.

4. Move the [Joystick] up / down to select an option, and then press the [Joystick(OK)].

- ◆ <YY/MM/DD>: The date is displayed in the order of Year / Month / Date.
- ◆ <DD/MM/YY>: The date is displayed in the order of Date / Month / Year.
- ◆ <MM/DD/YY>: The date is displayed in the order of Month / Date / Year.

5. After you finish setting, move to the desired mode by pressing the [MODE] button.

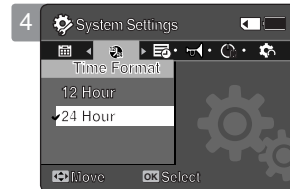
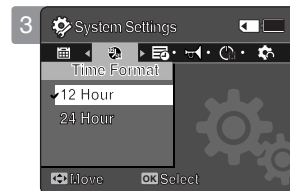


Setting the Sports Camcorder : Adjusting Date/Time

Setting Time Format

You can select the time format to display.

1. Press the [POWER] button to turn on the Sports Camcorder.
 - ◆ The Movie Record screen appears.
2. Set the *System Settings* mode by pressing the [MODE] button.
 - ◆ The System Settings screen appears.
3. Move the [Joystick] left / right to select <Time Format>.
4. Move the [Joystick] up / down to select an option, and then press the [Joystick(OK)].
 - ◆ <12 Hour>: The time is displayed as the unit of 12 hours.
 - ◆ <24 Hour>: The time is displayed as the unit of 24 hours.
5. After you finish setting, move to the desired mode by pressing the [MODE] button.

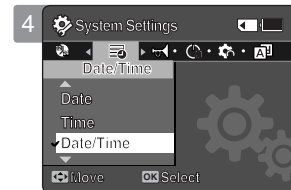
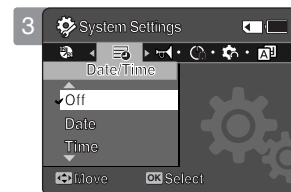


Setting the Sports Camcorder : Adjusting Date/Time

Setting Date/Time Display

You can set to display date and time on the LCD monitor.

1. Press the [POWER] button to turn on the Sports Camcorder.
 - ◆ The Movie Record screen appears.
2. Set the *System Settings* mode by pressing the [MODE] button.
 - ◆ The System Settings screen appears.
3. Move the [Joystick] left / right to select <Date/Time>.
4. Move the [Joystick] up / down to select an option, and then press the [Joystick(OK)].
 - ◆ <Off>: The date and time are not displayed.
 - ◆ <Date>: The date is displayed.
 - ◆ <Time>: The time is displayed.
 - ◆ <Date/Time>: The date and time are displayed.
5. After you finish setting, move to the desired mode by pressing the [MODE] button.
 - ◆ The selected Date/Time is displayed in Movie mode.



Setting the Sports Camcorder : Setting the System Settings

Setting the Beep Sound

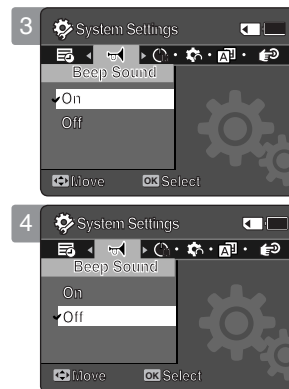
You can set the beep sound to on/off. When on, a beep will sound every time a button is pressed.

1. Press the [POWER] button to turn on the Sports Camcorder.
 - ◆ The Movie Record screen appears.
2. Set the *System Settings* mode by pressing the [MODE] button.
 - ◆ The System Settings screen appears.
3. Move the [Joystick] left / right to select <Beep Sound>.
4. Move the [Joystick] up / down to select an option, and then press the [Joystick(OK)].
 - ◆ <On>: Turn the beep sound on.
 - ◆ <Off>: Turn the beep sound off.
5. After you finish setting, move to the desired mode by pressing the [MODE] button.

[Note]

- ❖ When the earphones, Audio / Video cable or *External Camera Module is connected to the Sports Camcorder, the <Beep Sound> function will not operate.

*: VP-X300L only



Setting the Sports Camcorder : Setting the System Settings

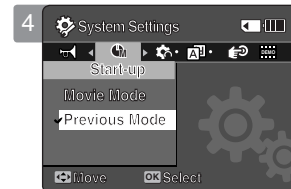
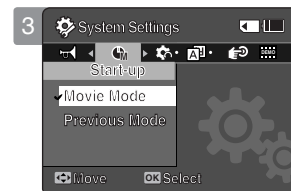
Setting Start-up Mode

You can select the starting mode displayed when you turn the Sports Camcorder on.

1. Press the [POWER] button to turn on the Sports Camcorder.
 - ◆ The Movie Record screen appears.
2. Set the *System Settings* mode by pressing the [MODE] button.
 - ◆ The System Settings screen appears.
3. Move the [Joystick] left / right to select <Start-up>.
4. Move the [Joystick] up / down to select an option, and then press the [Joystick(OK)].
 - ◆ <Movie Mode>: The Sports Camcorder starts up in the Movie mode.
 - ◆ <Previous Mode>: The Sports Camcorder starts up in the mode you used last. (except the System Settings mode)
5. After you finish setting, move to the desired mode by pressing the [MODE] button.

[Note]

- ❖ Make sure that the start-up mode is set to the selected mode when turning on the Sports Camcorder again.

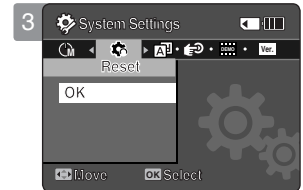


Setting the Sports Camcorder : Setting the System Settings

Resetting the Sports Camcorder

You can reset the Sports Camcorder to the default (factory) settings.

1. Press the [POWER] button to turn on the Sports Camcorder.
 - ◆ The Movie Record screen appears.
2. Set the *System Settings* mode by pressing the [MODE] button.
 - ◆ The System Settings screen appears.
3. Move the [Joystick] left / right to select <Reset> and then press the [Joystick(OK)].
 - ◆ The Sports Camcorder will be initialized to the default settings.



[Warning]

- ❖ If you reset the Sports Camcorder, all functions you set are re-initialized to the default (factory) settings.

[Note]

- ❖ After resetting the Sports Camcorder, set <Date/Time Set>. ➔page 78

Setting the Sports Camcorder : Setting the System Settings

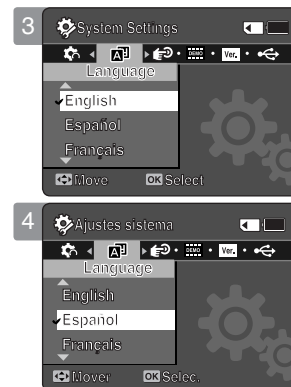
Selecting Language

You can select the desired language of the Sports Camcorder.

1. Press the [POWER] button to turn on the Sports Camcorder.
 - ◆ The Movie Record screen appears.
2. Set the *System Settings* mode by pressing the [MODE] button.
 - ◆ The System Settings screen appears.
3. Move the [Joystick] left / right to select <Language>.
4. Move the [Joystick] up / down to select the desired language, and then press the [Joystick(OK)].
 - ◆ English / Español / Français / Português / Deutsch / Italiano / Nederlands / Polski / Русский / 한국어 / 中文 / Iran / Arab / Magyar / ไทย / Українська / Svenska / Türkçe
5. After you finish setting, move to the desired mode by pressing the [MODE] button.

[Note]

- ❖ Even if the battery pack or AC power are removed, the language setting will be preserved.

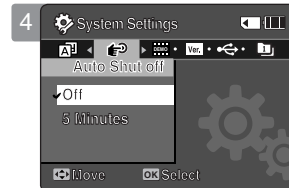
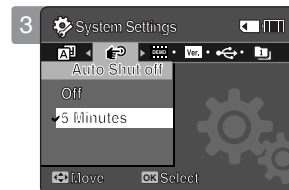


Setting the Sports Camcorder : Setting the System Settings

Setting the Auto Shut off

To save battery power, you can set the <Auto Shut off> function which turns off the Sports Camcorder if there is no operation for a certain period of time.

1. Press the [POWER] button to turn on the Sports Camcorder.
 - ◆ The Movie Record screen appears.
2. Set the *System Settings* mode by pressing the [MODE] button.
 - ◆ The System Settings screen appears.
3. Move the [Joystick] left / right to select <Auto Shut off>.
4. Move the [Joystick] up / down to select an option, and then press the [Joystick(OK)].
 - ◆ <Off>: Cancels the <Auto Shut off> function.
 - ◆ <5 Minutes>: Automatically turns off after 5 minutes.
5. After you finish setting, move to the desired mode by pressing the [MODE] button.



[Notes]

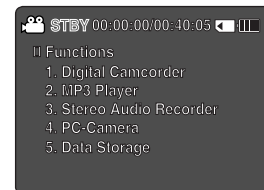
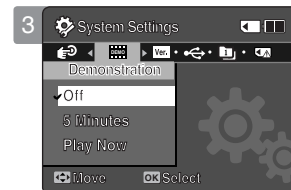
- ❖ The <Auto Shut off> will not function when you connect the AC Power Adapter to the Sports Camcorder. The <Auto Shut off> functions when the battery pack is the only power source.
- ❖ If the PC recognizes the USB device properly, the Auto Shut off function will be deactivated.
- ❖ <Auto Shut off> will only function when you set this function in System Settings mode.
- ❖ <Auto Shut Off> function is a power-saving feature that automatically turns off the Sports Camcorder in a certain time period for avoiding further power consumption. You can turn it on again by pressing the [POWER] button.

Setting the Sports Camcorder : Setting the System Settings

Setting the Demonstration Function

The Demonstration function will allow you to view all the functions that the Sports Camcorder supports.

1. Press the [POWER] button to turn on the Sports Camcorder.
 - ◆ The Movie Record screen appears.
2. Set the *System Settings* mode by pressing the [MODE] button.
 - ◆ The System Settings screen appears.
3. Move the [Joystick] left / right to select <Demonstration>.
4. Move the [Joystick] up / down to select an option, and then press the [Joystick(OK)].
 - ◆ <Off>: Cancels the Demonstration function.
 - ◆ <5 Minutes>: Starts the Demonstration function in 5 minutes.
 - ◆ <Play Now>: Starts the Demonstration function now.



[Note]

- ❖ If you set the Demonstration function, it operates only in Movie Record mode.

Setting the Sports Camcorder : Setting the System Settings

Viewing Version Information

You can see the firmware version information.

1. Press the [POWER] button to turn on the Sports Camcorder.

- ◆ The Movie Record screen appears.

2. Set the *System Settings* mode by pressing the [MODE] button.

- ◆ The System Settings screen appears.

3. Move the [Joystick] left / right to select <Version Info>.

- ◆ The firmware version of the Sports Camcorder is displayed.



4. After you view the version information, move to the desired mode by pressing the [MODE] button.

Setting the Sports Camcorder : Using USB Mode

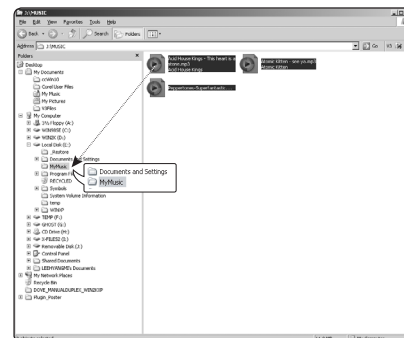
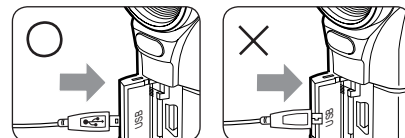
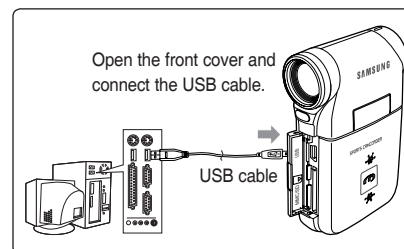
Transferring files to a computer

You can transfer the files to your PC.

Before your start!

You can copy the files when <USB Mode> sets to <Mass Storage> ➔ page 73

1. Turn on your PC.
2. Press the [POWER] button to turn on the Sports Camcorder.
 - ◆ The Movie Record screen appears.
3. Connect the Sports Camcorder to your PC with the USB cable.
4. Copy the desired file from the Sports Camcorder to your PC.
5. When finished, disconnect the USB cable.



[Notes]

- ❖ According to the PC type, Pop-up dialog for Removable disk may appear.
- ❖ Disconnecting the USB cable while the data transfer will stop the data transfer and might damage the data stored.
- ❖ Multiple USB devices connected to a PC or using USB hubs may cause communication / installation errors with the Sports Camcorder.

Setting the Sports Camcorder : Using USB Mode

Using the PC Cam Function

You can use your Sports Camcorder as a PC camera for video chatting, video conference and other PC camera applications.

Before your start!

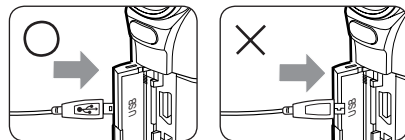
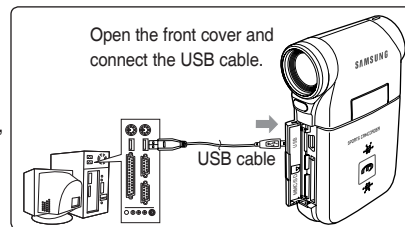
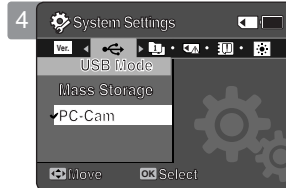
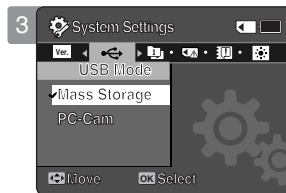
- ◆ For PC Cam use, it is required to install the DV Driver. ➔page 97
1. Press the [POWER] button to turn on the Sports Camcorder.
 - ◆ The Movie Record screen appears.
 2. Set the **System Settings** mode by pressing the [MODE] button.
 - ◆ The System Settings screen appears.
 3. Move the [Joystick] left / right to select <USB Mode>.
 4. Move the [Joystick] up / down to select <PC-Cam> and then press the [Joystick(OK)].
 5. Turn on your PC.
 6. Connect the Sports Camcorder to your PC with the USB cable.
 7. The Sports Camcorder can be used as a PC Cam for programmes such as Windows Messenger.
 - ◆ Various applications take advantage of the PC Cam function. Refer to respective product documentation for further details.
 8. When finished, disconnect the USB cable.

[Warning]

- ❖ If you connect more than two USB devices to a single PC or use a hub for USB connection, the PC camera function may not work properly.

[Notes]

- ❖ You must install the DV Driver. ➔page 97
- ❖ When the USB port connection changed, it may require DV Driver re-installation. ➔page 97
- ❖ It is recommended to use an AC Power Adapter during data transfer to avoid unintended power outages.
- ❖ It supports USB 2.0 standard.
- ❖ If the DV Media Pro is not properly installed on your PC, you may see the Found New Hardware Wizard on the screen. Follow the on-screen instructions to complete the installation.
- ❖ You may see a popup message for confirmation of the compatibility, depending on the PC specification. Press <Continue> and follow the on-screen instructions to complete the installation.

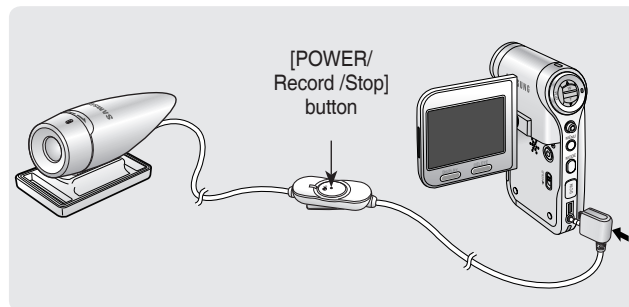


6

Using the External Camera Module (VP-X300L only)

Recording with the External Camera Module	92
Recording Movie using the External Camera Module	92
Wearing the External Camera Module	93
Mounting the External Camera Module on Rubber Mount	93
Using the Long Mount Band	94

- ◆ Save important data / recordings separately on other media, to avoid accidental loss due to a system failure or other reasons.

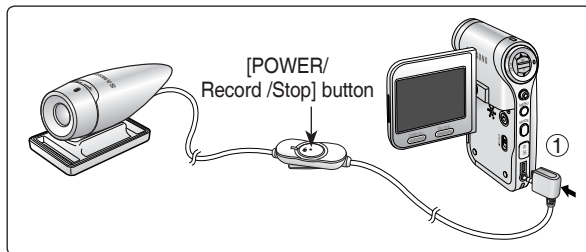


ENGLISH Using the External Camera Module (VP-X300L only) : Wearing the External Camera Module

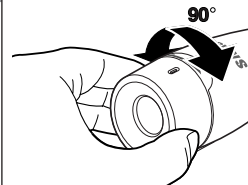
Recording Movie using the External Camera Module

Your Sports Camcorder offers the ability to record those thrilling moments. Whether you're snow boarding or skiing, you can record the moments with the External Camera Module and accessories.

- 1. Connect the External Camera Module cable to the multi jack of Sports Camcorder.**
 - ◆ You may fix the External Camera Module using a Tripod (not supplied), Rubber Mount, or Mounting Band.
- 2. Press the [POWER/Record /Stop] button of External Camera Module for more than 2 seconds.**
 - ◆ The power of the Sports Camcorder and the External Camera Module is turned on.
 - ◆ If you press the [POWER] button of the Sports Camcorder, only the Sports Camcorder is turned on.
- 3. Turn the Picture Rotator to the desired direction.**
 - ◆ The Picture Rotator turns 90 degrees left or right to select the desired picture angle.
- 4. Press the [POWER/Record /Stop] button of the External Camera Module to start recording.**
 - ◆ LED lamp lights in red.
 - ◆ Press the [Record /Stop] button of the Sports Camcorder to start recording.
- 5. Press the [POWER/Record /Stop] button of the External Camera Module to stop recording.**
 - ◆ Recording stops and the Sports Camcorder is ready again.
- 6. After recording, to prevent battery consumption, press the [POWER/Record /Stop] button of the External Camera Module more than 2 seconds to turn off.**
 - ◆ The power of the Sports Camcorder and the External Camera Module is turned off.
 - ◆ If you press the [POWER] button of the Sports Camcorder, only the Sports Camcorder is turned off.



3 90 degrees (max.)



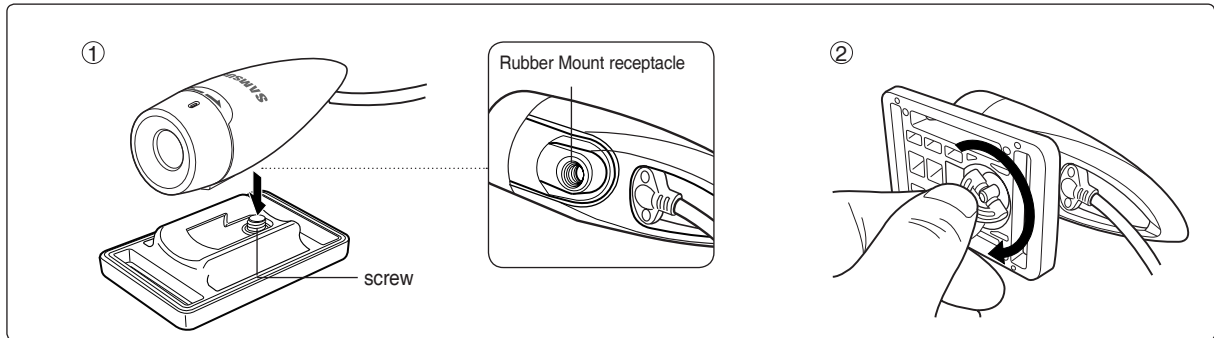
[Notes]

- ❖ The External Camera Module is available for recording movie only.
- ❖ You can use the [POWER/Record /Stop] button of the External Camera Module to power on/off and to start/stop recording simultaneously.
- ❖ Multi jack is used as a Earphones jack, AV Input/Output jack and External Camera Module jack.

Using the External Camera Module (VP-X300L only) : Wearing the External Camera Module

ENGLISH

Mounting the External Camera Module on Rubber Mount



1. Set the Rubber Mount receptacle of the External Camera Module to the screw of Rubber Mount.
2. Turn the Rubber Mount's screw to the right to fasten.

[Notes]

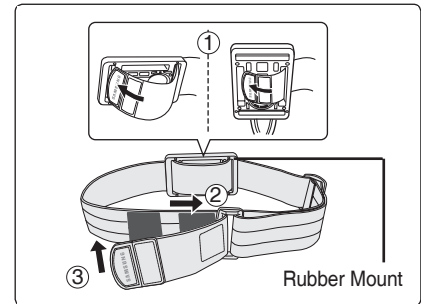
- ❖ Dropping the External Camera Module or bumping it to other objects may cause device failure. When using the device, you must attach it to the rubber mount, and be careful not to drop or strike it.
- ❖ The Recording a movie using the external camera module does not support anti-shake function.
- ❖ The [W/T] switch does not operate while you are recording a movie clip with the External Camera Module.
- ❖ When you record a movie using the external camera module connection, setting the [MP3/External Camera Module HOLD] switch on the Sports Camcorder to hold helps to prevent accidental operation by locking all button operations except the power button and volume control.

ENGLISH Using the External Camera Module (VP-X300L only) : Wearing the External Camera Module

Using the Long Mount Band

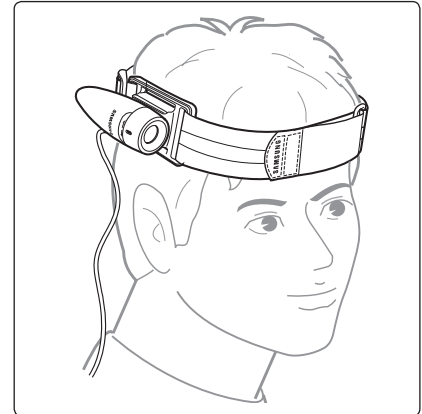
While the Sports Camcorder is inside your carrying case or backpack, you can attach the External Camera Module mounted on the Rubber Mount with help of the Long Mount Band.

- 1. Run the strap of Long Mount Band through both of the slots on the rubber mount as illustrated.**
 - ◆ You can use both the short part and long part of Rubber Mount as slots.
- 2. Run the strap through the buckle to adjust the tightness.**
- 3. Fasten the strap.**



[Notes]

- ❖ Dropping the External Camera Module or bumping it to other objects may cause device failure. When using the device, you must attach it to the rubber mount, and be careful not to drop or strike it.
- ❖ Direct contact of the Rubber Mount with your skin for a long period of time may cause skin irritation or allergy. Avoid long term contact.



7

Miscellaneous Information

USB Interface Environment	96
USB connection to a computer	96
System Environment	96
Installing Software	97
Installing DV Media Pro.....	97
Ulead Video Studio.....	98
Connecting To Other Devices	99
Connecting to a PC using a USB Cable.....	99
Connecting to a TV monitor	100
Connecting to a VCR / DVD Recorder	101
Recording unscrambled content from other digital devices.....	102
Maintenance	103
Cleaning and Maintaining the Sports Camcorder	103
After using the Sports Camcorder.....	103
Cleaning the Body	104
Using the Built-in Rechargeable Battery.....	104
Regarding the Battery	105
Using the Sports Camcorder Abroad.....	106

- ◆ Save important data / recordings separately on other media, to avoid accidental loss due to a system failure or other reasons.

Miscellaneous Information : USB Interface Environment

USB connection to a computer

Only Microsoft (Windows)–provided drivers can guarantee the compatibility of USB High Speed.

- ✦ Windows 2000: Service Pack 4 or higher - High Speed USB
- ✦ Windows XP: Service Pack 1 or higher - High Speed USB
- ✦ Windows Vista(32bit): Service Pack 1 or higher - High Speed USB

PC System Requirements

Windows operating systems

- CPU: Intel® Pentium 4™, 2GHz or higher, or the equivalent
- Operating systems: Windows® 2000/XP/Vista (32bit)
Standard installation is required. If you have upgraded your current operating system, we can not guarantee the proper operation of the product.
- Memory: 512MB RAM or higher
- Hard Disk: 2GB or higher
- Resolution: 1024x768 dots, 24bit color
- USB port: USB2.0 High Speed

[Notes]

- ✦ Not all PCs configured with the above environment are guaranteed to operate properly.
- ✦ USB connection using an external USB hub or an additional USB daughterboard is not guaranteed.
- ✦ If your OS is Windows 2000/XP/Vista(32bit), log in as the [Administrator(administrator of the PC)] (or a user with the equivalent privileges) to install the OS.
- ✦ If the capacity of PC is low, the movie file may not play normally or will often stop.
- ✦ If the capacity of PC is low, it may take a long time to edit the movie file.
- ✦ Intel® Pentium III™ or Pentium 4™ is a trademark of the Intel Corporation.
- ✦ Mac, Macintosh and Mac OS are trademarks of Apple Computer, Inc.
- ✦ Windows® is a registered trademark of the Microsoft® Corporation.
- ✦ All other brands and names are property of their respective owners.
- ✦ USB interface is not supported in Windows® Vista (64bit) operating system.
- ✦ We can not give a full guarantee on proper operation in all computer systems. Some of the PCs that meet the above mentioned 'PC System Requirements' may not work properly, depending on the production quality.

Miscellaneous Information : Installing Software

Installing DV Media Pro

You need to install DV Media Pro to play back recorded movie files or the transferred data from Sports Camcorder with the USB cable on your PC.

Before your start!

- ◆ Turn on your PC. Exit all other applications running.
- ◆ Insert the provided CD into the CD-ROM drive.

The setup screen appears automatically soon after the CD was inserted. If the setup screen does not appear, click on "Start" on the bottom left corner and select "Run" to display a dialog. Type "D:\autorun.exe" and then press ENTER, if your CD-ROM drive is mapped to "D:Drive".

Installing Driver - DV Driver and DirectX 9.0

- ◆ DV Driver is a software driver that is required to support establishing connection to a PC. (If it is not installed, some functions will not be supported.)

1. Click on "DV Driver" on the Setup screen.

- ◆ Driver software required is installed automatically.
Following drivers will be installed:
 - USB PC-CAMERA driver
 - USB Streaming Driver (USB video transfer)

2. Click on <Confirm> to finish driver installation.

3. If the "DirectX 9.0" is not installed, it is installed automatically after setting "DV Driver".

- ◆ After installing DirectX 9.0, PC needs to be restarted.
- ◆ If DirectX 9.0 is installed already, there is no need to restart the PC.

Application Installation - Video Codec

◆ Click on "Video Codec" on the Setup screen.

Video Codec is required to play movie files recorded by this Sports Camcorder on a PC.

[Note]

- ❖ If a message saying "Digital Signature not found" or something similar appears, ignore the message and continue with the installation.

Miscellaneous Information : Installing Software

Application Installation - MediaOne Gallery Installation

1. Click “MediaOne Gallery” in the Setup menu.

- ◆ This is an integrated file and multimedia management tool. Easy file management with MediaOne Gallery; you can manage all media files in the unit of album and sort them by date, type and size, etc.

Application Installation – Quick Time

1. Click “Quick Time” on the Setup screen.

- ◆ QuickTime is Apple's technology for handling movie, sound, animation, graphics, text, music, and even 360-degree virtual reality (VR) scenes.

Ulead Video Studio

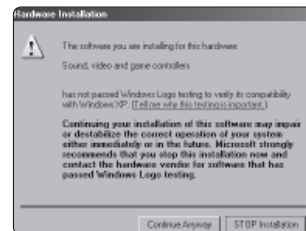
Setting up Ulead Video Studio

After inserting the CD, the setup screen displays automatically. Follow the instruction to start installation.

It is a video editing tool that allows users to edit movie files.

[Notes]

- ❖ Please install by using the Software CD that came with this Sports Camcorder.
We do not guarantee compatibility for different CD versions.
- ❖ For movie playback on a PC, install software in this order : **DV Driver - DirectX 9.0 - Video Codec**
- ❖ For movie editing, use the **Ulead Video Studio**.
- ❖ For PC Cam use, it is required to install the **DV Driver** installation is required.
- ❖ You have to install “**DV Driver**”, “**Video Codec**” and “**DirectX 9.0**” to run DV Media Pro properly.
- ❖ If a message saying “Digital Signature not found” or something similar appears, ignore the message and continue with the installation.



Miscellaneous Information : Connecting To Other Devices

Connecting to a PC using a USB Cable

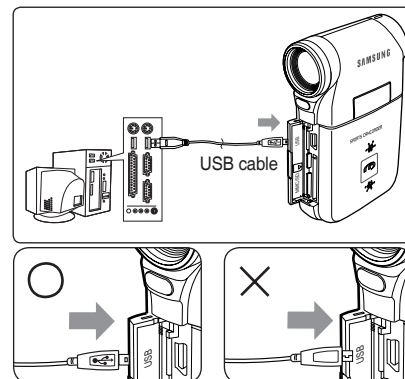
Connect to a PC with the provided USB cable. You can view your files on your PC.

Before your start!

You can transfer the files when <USB Mode> sets to <Mass Storage> →page 73

Connecting to a PC – Playing Files

1. Press the [POWER] button to turn on the Sports Camcorder.
2. Connect the Sports Camcorder to the PC with the provided USB cable as shown in the diagram.
3. Copy the file to your PC.
 - ◆ We recommend copying the files onto your PC for better viewing.
4. Double-click on the copied file name.
It starts to play back.



<Open the front cover and connect the USB cable.>

Disconnecting from a PC

1. Click on the “Safely remove hardware” tray icon on the bottom right side of the desktop.
Select the device and click on the “Stop” button.
2. When the message saying that it is safe to remove the hardware appears, unplug the cable from the PC.

[Warning]

- ❖ When data communication is disrupted due to static electricity, magnetic field or other reason, restart the programme or try to disconnect / connect the communication cable (USB cable) again.

[Notes]

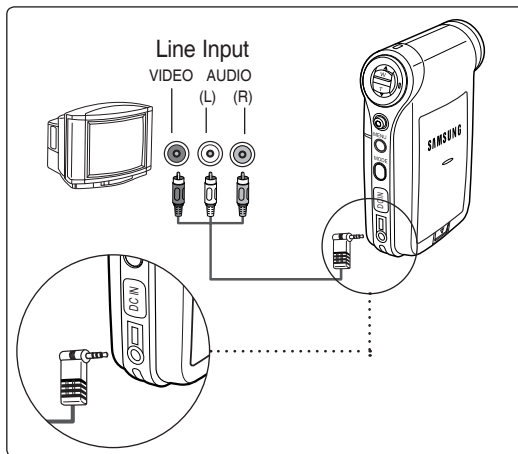
- ❖ According to the PC type, Pop-up dialog for Removable disk may appear.
- ❖ Multiple USB devices connected to a PC or using USB hubs may cause communication / installation errors with the Sports Camcorder.
- ❖ Refer to page 96 for PC recommendations on USB use. Some PCs meeting the requirements may not support proper USB operation due to various reasons. Please refer to the product documentation of the PC for further details.
- ❖ If you disconnect the USB cable from the PC or the Sports Camcorder during the data transfer, the data transfer will stop and the data may be damaged.
- ❖ The Sports Camcorder may operate abnormally in the recommended system environment depending on your PC.
For example, the movie file may play abnormally.

Miscellaneous Information : Connecting To Other Devices

Connecting to a TV monitor

You can connect your Sports Camcorder directly to a TV set. Set the appropriate video input when viewing Sports Camcorder playback on the TV.

1. Connect the provided Audio/Video cable to the [Multi jack] of the Sports Camcorder.
2. Connect the other end of the cable to the TV set by matching the colours of the terminals.
3. Turn on the TV and set the TV's <Source> to the external input the Sports Camcorder is connected to.
 - ◆ <Source> may be represented as <Line In>, <Input>, <A/V Input>, etc. depending on the manufacturer.
4. Press the [POWER] button to turn on the Sports Camcorder.
 - ◆ Movie Record mode is displayed on the TV screen.
5. Press the [PLAY] button or [Joystick(OK)] to switch to Movie Play mode.
6. Move the [Joystick] left / right to select a movie and then press the [Joystick(OK)].
 - ◆ It begins playback.
 - ◆ To pause playback, press the [Joystick(OK)].



[Notes]

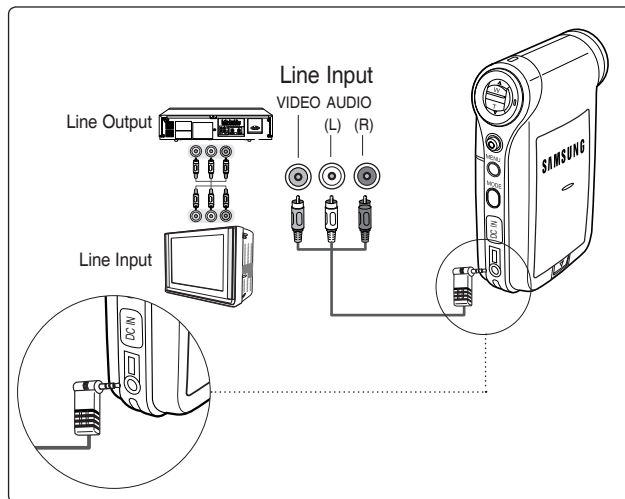
- ❖ When you connect your Sports Camcorder to a TV, some indicators may not partly appear.
- ❖ If you wish to input/output a movie clip from another device to the Sports Camcorder, you must first set <Line In/out> in movie mode. ➔page 50

Miscellaneous Information : Connecting To Other Devices

Connecting to a VCR / DVD Recorder

You can connect your Sports Camcorder to a TV set through a VCR/DVD Recorder.

1. Connect the provided Audio/Video cable to the [Multi jack] of the Sports Camcorder.
2. Connect the other end of the cable to the VCR/ DVD Recorder by matching the colours of the terminals.
3. Connect the Audio/Video cable from TV Input to Video Output of the VCR/DVD Recorder.
4. Turn on the TV and set the <Source> to the external input the VCR/DVD Recorder is connected.
5. Turn on the VCR/DVD Recorder and set the <Source> to the external input source where you connected the Sports Camcorder.



[Note]

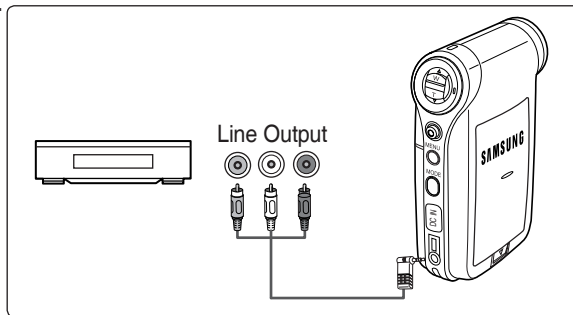
- ❖ If you wish to input/output a movie clip from another device to the Sports Camcorder, you must first set <Line In/out> in movie mode. ➡page 50

Miscellaneous Information : Connecting To Other Devices

Recording unscrambled content from other digital devices

You can connect other external digital devices to Sports Camcorder to record unscrambled contents.

1. Connect the provided Audio/Video cable to the [Multi jack] of the Sports Camcorder.
2. Connect the Audio/Video cable to the external output terminal of your digital devices (DVD, DVC, etc.) by matching the cable to the colours of the terminals.
3. Press the [POWER] button to turn on the Sports Camcorder.
 - ◆ The Movie Record screen appears.
4. Press the [MENU] button.
Move the [Joystick] left / right to select <Line In/Out>.
5. Move the [Joystick] up / down to select <In> and then press the [Joystick(OK)].
6. Play back the other digital devices.
7. Press the [Record/Stop] button to start recording.
8. To stop recording, press the [Record/Stop] button again.



[Notes]

- ❖ The quality of an input signal recorded through the Line input terminal cannot be guaranteed unless it comes from digital devices (DVD, DVC, etc.).
- ❖ A write-protected disk can not be copied by the Sports Camcorder.

Maintenance : Cleaning and Maintaining the Sports Camcorder

After using the Sports Camcorder

- ❖ **For safekeeping of the Sports Camcorder, follow these steps.**
 - ✓ Turn the Sports Camcorder off.
 - ✓ Remove the battery pack ➔page 21.
 - ✓ Remove the memory card ➔page 33.
- ❖ **To prevent any damage to the LCD monitor, do not apply excessive force on its moving parts.**
- ❖ **Do not drop or in anyway shock the Sports Camcorder.**
- ❖ **For prolonged use of the Sports Camcorder, avoid using it in places subject to excessive humidity or dust.**
- ❖ **Do not leave the Sports Camcorder in places subject to:**
 - ✓ Excessive humidity, steam, soot or dust.
 - ✓ Excessive shock or vibration.
 - ✓ Extremely high (over 50°C or 122°F) or extremely low (under 0°C or 32°F) temperatures.
 - ✓ Strong electromagnetic fields.
 - ✓ Direct sunlight or in a closed car on a hot day.
- ❖ **For the safe use of the battery pack, follow these.**
 - ✓ To conserve battery power, be sure to turn off the Sports Camcorder when not in use.
 - ✓ Battery consumption may vary depending on the condition of use. Recording with many starts and stops, frequent zooming, and recording in low temperatures will shorten actual recording times.
 - ✓ Dispose of used battery packs promptly. Do not dispose of them in fire.
 - ✓ The battery pack will become warm during charging and use. This is not a malfunction.
 - ✓ The battery pack has a limited service life. If the period of use becomes noticeably shorter with a normal charge, the battery pack is at the end of its service life. Replace it with a new battery pack.
- ❖ **For the safe use of the Memory Card, follow these.**
 - ✓ The memory card should be stored away from heaters and other heat sources. Avoid storing memory cards under direct sunlight and avoid electromagnetic fields.
 - ✓ Do not power off any devices while transferring data, as this may destroy the data.
 - ✓ Back up your data often to a hard disk or other permanent storage media.
 - ✓ Format the memory card periodically.
 - ✓ When formatting the memory card, format in the Sports Camcorder.

Maintenance : Cleaning and Maintaining the Sports Camcorder

Cleaning the Body

❖ **To Clean the Exterior of the Sports Camcorder**

- ✓ To clean the exterior, use a soft dry cloth. Wipe the body gently.
Do not apply excessive force when cleaning, gently rub the surface.
- ✓ The LCD monitor surface should not be pressed. Use a soft dry cloth to clean the surface.
- ✓ To clean the lens, use an optional air blower to blow out dirt and other small objects. Do not wipe the lens with cloth or your fingers. If necessary, use lens cleaning paper.
- ✓ Do not use thinner, alcohol or benzene for cleaning. Otherwise, the finish may be damaged.
- ✓ Cleaning should be done only after the battery pack has been removed, and other power sources have been disconnected.

[Note]

- ❖ If the lens looks dimmer, turn off the Sports Camcorder and leave it for about 1 hour.

Using the Built-in Rechargeable Battery

The Sports Camcorder incorporates a rechargeable lithium cell that maintains the date and other settings even when the AC Power Adapter and the battery are removed. The rechargeable lithium cell is automatically recharged when the Sports Camcorder is used.

Charging the Built-in Rechargeable Battery

- ❖ If the Sports Camcorder is not used at all, the cell runs down in 5 days. In this case, connect the AC Power Adapter to the Sports Camcorder and press the [POWER] button to turn on the Sports Camcorder. Then leave it for 24 hours. After that, set the date and other settings again.

Maintenance : Cleaning and Maintaining the Sports Camcorder

Regarding the Battery

- Battery pack performance decreases when the surrounding temperature is 10°C (50°F) or below, and shortens the battery life. In that case, do one of the following so that the durability of the battery life can be extended for a longer period of time.
 - Put the battery pack in a pocket to warm it up, and insert it in your Sports Camcorder immediately prior to use.
 - Use a large capacity battery pack.
- Be sure to set the power button to off when not recording or playing back. The battery power is also consumed in standby, playback and pause mode.
- Have your battery packs ready for two or three times the expected recording time, and make trial recordings before making the actual recording.
- Do not expose the battery packs to water. The battery pack is not water resistant.
- Keep the battery out of reach of children. If it is swallowed, seek medical assistance immediately.
- Wipe the battery with a clean dry cloth to ensure proper contact.
- Do not pick up the battery using metal tools as this may cause a short circuit.
- Do not short the battery or dispose of the battery in fire. Do not disassemble the battery. The battery could explode or catch fire.
- Use only recommended batteries and accessories. Use of batteries not expressly recommended for this equipment may cause an explosion or leakage, resulting in fire, injury or damage to the surroundings.
- Install the battery according to the instructions. Improperly installed batteries can cause damage to the sports camcorder.
- When you do not use for a long time, remove the battery pack. Otherwise, the battery may leak. To avoid damage to the product, be sure to remove the battery when no charge remains.

Maintenance : Cleaning and Maintaining the Sports Camcorder

Using the Sports Camcorder Abroad

- ❖ Each country or region has its own electric and colour systems. (NTSC/PAL)
- ❖ Before using the Sports Camcorder abroad, check the following items:

Power Sources

- ❖ You can use the Sports Camcorder in any country or area with the supplied AC Power Adapter where the power input range is 100V - 240V, 50/60Hz.
- ❖ Use a commercially available AC plug adapter if necessary, depending on the design of the local wall outlets.

Colour System

- ❖ You can view your video files using the built-in LCD monitor.
However, to view your recordings on a television set or to copy them to a video cassette recorder (VCR), the television set or the VCR must be PAL-compatible and have the appropriate Audio / Video ports. Otherwise, you may need to use a separate Video Format Transcoder (PAL-NTSC format Converter).

PAL-Compatible Countries / Regions

Australia, Austria, Belgium, Bulgaria, China, CIS, Czech Republic, Denmark, Egypt, Finland, France, Germany, Greece, Great Britain, Holland, Hong Kong, Hungary, India, Iran, Iraq, Kuwait, Libya, Malaysia, Mauritius, Norway, Romania, Saudi Arabia, Singapore, Slovak Republic, Spain, Sweden, Switzerland, Syria, Thailand, Tunisia, etc.

NTSC-Compatible Countries / Regions

Bahamas, Canada, Central America, Japan, Mexico, Philippines, Korea, Taiwan, United States of America, etc.

Troubleshooting

Self Diagnosis Display

Display	Informs that...	Action
Not enough free space.	Not enough free space for saving files.	Check the space of the memory card.
Corrupted file.	The file is corrupted.	Delete the corrupted file.
Communication Error!	An error has occurred while transferring data.	Disconnect the USB cable and connect it again.
Low battery	Battery is low.	Charge the battery pack or connect the AC Power Adapter.
Holding the key	The HOLD switch is locked.	Unlock the HOLD switch and operate the Sports Camcorder.
Card error	The memory card is corrupted.	Format the memory card or replace it with a new one.
Not formatted	Format the memory card.	Format the memory card.
Write error	Failed to write.	Check the memory space or format the memory.
Read error	Failed to read.	Delete the file.
Not supported format	The format is not supported.	The file format is not supported. Check the supported file. on page 29.
Write protected	Memory card is protected to write.	Unlock the memory card. (except MMC)
MPEG decoding Error	The movie file is corrupted.	Delete the corrupted file.
Low speed card. Please record at lower quality.	The memory card that you are using operates at a low speed.	Make recording at a low quality or replace the memory card with a Samsung-authorized one.

✦ If these instructions do not solve your problem, contact your nearest Samsung dealer or authorized service centre/personnel.

Symptom	Possible Causes	Measure
No power is supplied	The power is not connected properly The battery is dead The battery is too cold	Connect the AC Power Adapter properly, page 24 Replace the dead battery pack Warm up the battery or move to warmer place
Date/Time is wrong	The Date/Time is not set	Set the Date/Time, page 78

Troubleshooting

Symptom	Possible Causes	Measure
Focus does not adjust automatically	Focus is set to manual mode Recording is being done in a dark place Lens is covered with condensation	Set focus to AUTO Use a lighting apparatus to brighten the scene Clear the lens and check the focus
The Memory card will not load properly	The memory card is in wrong position A foreign object is in the memory card slot	Insert the memory card properly, page 33 Clear the memory card slot
Colour balance of picture is not natural	White balance adjustment is required	Set proper white balance, page 42
Files stored in the memory card cannot be deleted	Memory card is protected File is locked	Remove the protection tab of memory card (except MMC) Remove the lock on the file, pages 53, 60, 66, 70
Images on the LCD monitor appear dark	Ambient is too bright Ambient temperature is too low	Adjust the brightness and angle of LCD Low temperatures may produce a dark LCD display This is not a malfunction
Rear of the LCD monitor is hot	Prolonged use of the LCD monitor.	Close the LCD monitor to turn it off, or turn your device off to cool down
The power turns off automatically.	If no keystroke is entered for more than 5 minutes, your camcorder automatically turns off for power saving purposes. The battery pack is almost exhausted.	-To turn on your camcorder, press the power button. And if you do not use this auto power off function, set the <Auto Shut Off> to Off in the menu list. page 86 -Charge the battery pack or replace it with a charged one.

Using the Menu

Movie

1. Record

Size

720x576
352x288

Quality

Super Fine
Fine
Normal

White Balance

Auto
Daylight
Fluorescent
Tungsten
Custom

Program AE

Auto
Sports
Spotlight
Sand/Snow

Effect

Off
Art
Mosaic
Sepia
Negative
Mirror
B&W

EIS

On
Off

Focus

AF
MF

BLC

On
Off

Digital Zoom

On
Off

Record Mode

TV
PC

Line In/Out

In
Out

2. Play

Play Mode

Play One
Play All
Repeat One
Repeat All

Lock

Lock
Multi Select
Lock All
Unlock All

MP3

1. Play

Repeat

Off
Repeat One
Repeat Folder
Repeat All
Shuffle Folder
Shuffle All

Equalizer

Off
Pop
Classic
Jazz

Lock

Lock
Multi Select
Lock All
Unlock All

Using the Menu

Voice Recorder

1. Record**2. Play**

Play Mode

Play One

Play All

Repeat One

Repeat All

Lock

Lock

Multi Select

Lock All

Unlock All

File Browser

Lock

Lock

Multi Select

Lock All

Unlock All

File Info.

OK

System Settings

USB Mode

Mass Storage

PC-Cam

File No.

Series

Reset

Format

Start

Memory Space

000MB/000MB

LCD Brightness

0%

⋮

100%

Date/Time Set

Date Format

YY/MM/DD

DD/MM/YY

MM/DD/YY

Time Format

12 Hour

24 Hour

Date/Time

Off

Date

Time

Date/Time

Beep Sound

On

Off

Start-up

Movie Mode

Previous Mode

Reset

OK

Language

English / Español /

Français / Português

/ Deutsch / Italiano

/ Nederlands / Polski

/ Русский / 한국어 /

中文 / Iran / Arab

/ Magyar / ไทย /

Українська / Svenska

/ Türkçe

Auto Shut off

Off

5 Minutes

Demonstration

Off

5 Minutes

Play Now

Version Info

Specifications

Model Name	VP-X300/X300L	
The Sports Camcorder System		
Movie Recording System	MPEG4 AVI Format	
MP3	Stereo Playing	
Voice	WAVE File Recording/Play (8KHz Sampling, 16 bit, Stereo)	
Memory	Memory Card	SD
		MMC
Recording time	Refer to page 30	
CCD Pixel	1/6 inch CCD, 800K(Maximum)	
Zoom Ratio	x10(Optical), x100(Digital)	
Focal Length	f=2.4-24mm, F1.8-2.4	
Minimum Illumination	3.0 Lux	
LCD monitor	2.0" Transmission Type, 211K	
Connectors		
USB	Mini-B type (USB 2.0 High Speed)	
DC Power In connector	Proprietary 3 pins connector	
Multi jack	Earphones	ø 3.5 Stereo
	AV Input/Output	Video (1.0Vp_p, 75Ω), Audio (-7.5dBm 47KΩ, Stereo) External CMOS Camera
General		
Operating Temperature	0°C-40°C (32°F-104°F)	
Operating Humidity	10%-80%	
Power Source	3.8V (Li-ion Polymer Battery Pack), 4.8V (AC Adapter)	
Power Consumption	2.5W (LCD ON)	
Dimensions (WxHxD)	61.3mm x 93.6mm x 30.3mm (Including the Battery Pack)	
Weight	150g (Including the Battery pack)	
Built-in Microphone	Omni-directional condenser microphone	

Specifications

Model Name	VP-X300/X300L
AC Adapter	
Power Requirement	AC 100 ~ 240V, 50 / 60 Hz
DC Output	DC 4.8V, 1.0 A
Operating Temperature	0°C (32°F) ~ 40° (104°F)
Dimensions	70 mm x 29.7 mm x 59.1 mm
Weight	85.1g

Model Name	XC-L2P
External CMOS Camera	
CMOS Pixel	1/3 inch CMOS, 270K(Maximum)
Video Resolution	720x576 (VGA)
Exposure	Auto
White Balance	Auto
Focus Type	Fixed
Focal Length	f=5.56mm, F2.0
Connector	
AV Output	Video (1.0Vp_p), Audio (-7.5dBm 47KΩ, Input : mono)
General	
Operating Temperature	0°C~40°C (32°F~104°F)
Operating Humidity	20%~80%
Power Source	B+ (3.2V~4.8V)
Power Consumption	0.7W
Dimensions (LxHxD)	94.5mm x 34.7mm x 33mm
Weight	96g
Built-in Microphone	Omni-directional condenser microphone

The product design and specifications are subject to change without notice for better performance and quality.

Index

- A -	
AC Power Adapter	13, 24
AF(Auto Focus).....	46
Auto Shut off	86
- B -	
Battery Pack.....	21~24
Beep Sound	82
BLC	47
- C -	
Charging the Battery	24
Cleaning and Maintenance.....	103~106
- D -	
Date&Time	78
Demonstration.....	87
Digital Zoom.....	48
DV Media Pro.....	97, 98
- E -	
Earphones	14
Effect	44
- F -	
File Browser	67
File No.	74
Format.....	75
- J -	
Joystick.....	27
- L -	
Language	85
LCD Brightness.....	77
LOCK.....	53, 60, 66, 70

- M -	
MODE button	26
MENU button	27
MF(Manual Focus).....	46
- P -	
PC Cam.....	90
Program AE	43
- Q -	
Quality	41
- R -	
Reset.....	84
- S -	
Start-up Mode	83
Sepia	44
- T -	
Troubleshooting	107, 108
- U -	
USB	73
- V -	
Version Information.....	88
Voice Record	62
- W -	
White Balance.....	42
- Z -	
Zooming In and Out.....	36

ENGLISH

Power Sources (United Kingdom Only)

The plug used on this product is a unitary transformer plug and is designed specifically for this Camcorder it must never be replaced or removed with any other type of plug.

ENGLISH

Contact SAMSUNG WORLD WIDE

If you have any questions or comments relating to Samsung products, please contact the SAMSUNG customer care centre.

Region Country	Customer	Care Center	Web Site
North America	CANADA	1-800-SAMSUNG (726-7864)	www.samsung.com/ca
	MEXICO	01-800-SAMSUNG (726-7864)	www.samsung.com/mx
	U.S.A	1-800-SAMSUNG (726-7864)	www.samsung.com
Latin America	ARGENTINE	0800-333-3733	www.samsung.com/ar
	BRAZIL	0800-124-421	www.samsung.com/br
	CHILE	800-726-7864(SAMSUNG)	www.samsung.com/cl
	COSTA RICA	0-800-507-7267	www.samsung.com/latin
	ECUADOR	1-800-10-7267	www.samsung.com/latin
	EL SALVADOR	800-6225	www.samsung.com/latin
	GUATEMALA	1-800-299-0013	www.samsung.com/latin
	JAMAICA	1-800-234-7267	www.samsung.com/latin
	PANAMA	800-7267	www.samsung.com/latin
	PUERTO RICO	1-800-682-3180	www.samsung.com/latin
	REP. DOMINICA	1-800-751-2676	www.samsung.com/latin
	TRINIDAD & TOBAGO	1-800-7267-864	www.samsung.com/latin
VENEZUELA	1-800-100-5303	www.samsung.com/latin	
Europe	BELGIUM	02 201 2418	www.samsung.com/be
	CZECH REPUBLIC	844 000 844	www.samsung.com/cz
	DENMARK	38 322 887	www.samsung.com/dk
	FINLAND	09 693 79 554	www.samsung.com/fi
	FRANCE	08 25 08 65 65 (0,15€/Min)	www.samsung.com/fr
	GERMANY	01805 - 121213 (€ 0,14/Min)	www.samsung.de
	HUNGARY	06 40 985 985	www.samsung.com/hu
	ITALIA	199 153 153	www.samsung.com/it
	LUXEMBURG	02 261 03 710	www.samsung.lu
	NETHERLANDS	0900 20 200 88 (€ 0.10/Min)	www.samsung.com/nl
	NORWAY	231 627 22	www.samsung.com/no
	POLAND	0 801 801 881	www.samsung.com/pl
	PORTUGAL	80 8 200 128	www.samsung.com/pt
	SLOVAKIA	0850 123 989	www.samsung.com/sk
	SPAIN	902 10 11 30	www.samsung.com/es
	SWEDEN	08 585 367 87	www.samsung.com/se
	U.K	0870 SAMSUNG (7267864)	www.samsung.com/uk
CIS	RUSSIA	8-800-200-0400	www.samsung.ru
	UKRAINE	8-800-502-0000	www.samsung.com/ur
Asia Pacific	AUSTRALIA	1300 362 603	www.samsung.com/au
	CHINA	800-810-5858, 010- 6475 1880	www.samsung.com.cn
	HONG KONG	2862 6001	www.samsung.com/hk
	INDIA	3030 8282 1600 1100 11	www.samsung.com/in
	INDONESIA	0800-112-8888	www.samsung.com/id
	JAPAN	0120-327-527	www.samsung.com/jp
	MALAYSIA	1800-88-9999	www.samsung.com/my
	PHILIPPINES	1800-10-SAMSUNG (7267864)	www.samsung.com/ph
	SINGAPORE	1800-SAMSUNG (7267864)	www.samsung.com/sg
	THAILAND	1800-29-3232 02-689-3232	www.samsung.com/th
Middle East & Africa	TAIWAN	0800-329-999	www.samsung.com/tw
	VIETNAM	1 800 588 889	www.samsung.com/vn
	SOUTH AFRICA	0860 7267864 (SAMSUNG)	www.samsung.com/za
	U.A.E	800SAMSUNG (7267864)	www.samsung.com/ma

ENGLISH

THE SPORTS CAMCORDER IS MANUFACTURED BY:



RoHS compliant

Our product complies with "The Restriction Of the use of certain Hazardous Substances in electrical and electronic equipment", and we do not use 6 hazardous materials- Cadmium(Cd), Lead (Pb), Mercury (Hg), Hexavalent Chromium (Cr⁺⁶), Poly Brominated Biphenyls (PBBs), Poly Brominated Diphenyl Ethers(PBDEs)- in our products.

Free Manuals Download Website

<http://myh66.com>

<http://usermanuals.us>

<http://www.somanuals.com>

<http://www.4manuals.cc>

<http://www.manual-lib.com>

<http://www.404manual.com>

<http://www.luxmanual.com>

<http://aubethermostatmanual.com>

Golf course search by state

<http://golfingnear.com>

Email search by domain

<http://emailbydomain.com>

Auto manuals search

<http://auto.somanuals.com>

TV manuals search

<http://tv.somanuals.com>