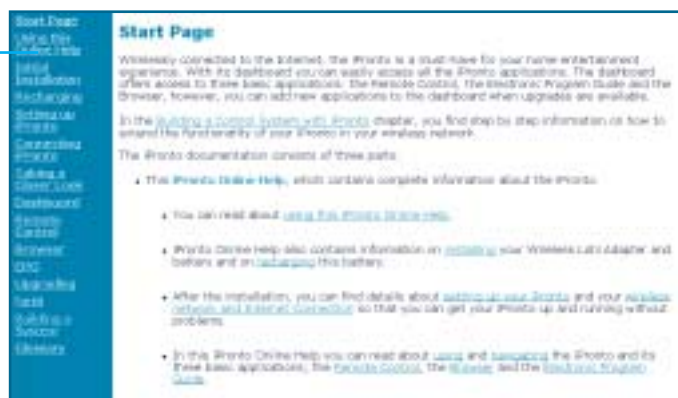
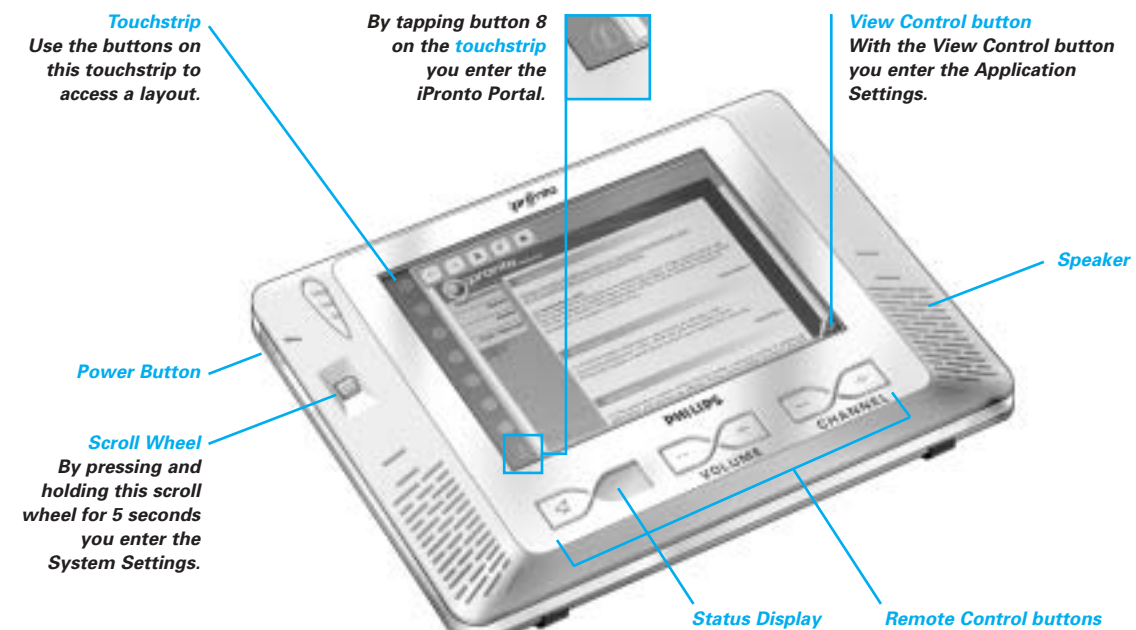


You can find [more information](#) on getting the iPronto up and running and using it:

- In the **iPronto User Manual** that accompanies the iPronto.
- In **iPronto Online Help** that you can access via the 'User Manual' link in the iPronto Portal in layout 8.
- At <http://www.pronto.philips.com>.



# Getting Started Guide



3104 205 3288.2

## Install the Wireless LAN Adapter

- 1** Open the Wireless LAN Adapter cover by pushing in the grips and sliding off the cover in the indicated direction.
- 2** Insert the Wireless LAN Adapter in the socket.
- 3** Put the Wireless LAN Adapter in the correct position until it clicks and close the cover.

## Install the Battery

- 1** Lift the stand.
- 2** Open the battery cover by pushing the grips and sliding off the cover in the indicated direction.
- 3** Attach the battery connector to the provided socket.
- 4** Put the **right side** of the battery under the provided hook.
- 5** Push the **left side** of the battery down into its place. Close the battery cover.

## Recharge the Battery



**Note**  
It is best to fully recharge the battery. The iPronto can be used when it is recharging.

## Set the General Settings

### Note

The first time you activate your iPronto, the System Settings will automatically appear.

**2** Select your **timezone** from this dropdown list.

**3** Select the desired **Time format** and **Date format** from these dropdown lists.

**4** Select the box that you want to modify.

The text box is highlighted.

Use the + and - buttons to adjust the time and the date.

**1**

Tap this button and follow the instructions on the screen.

When calibration has succeeded, you hear a success sound.

**5**

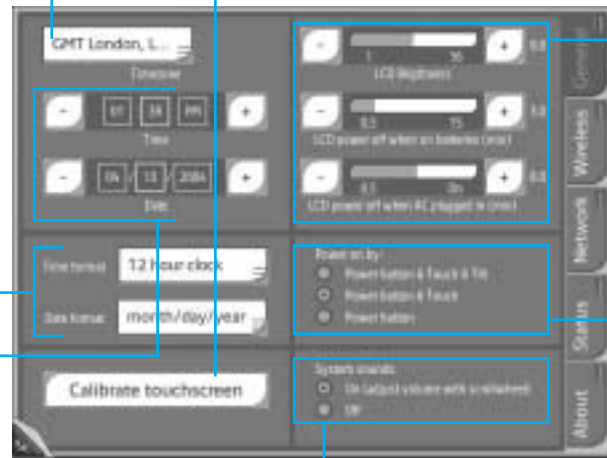
Use the + and - buttons to adjust the brightness and power off settings.

**6**

Select one of these three options to adjust the power on settings.

**7**

Switch the System sounds on or off. System sounds are the sounds that you hear when you tap a button on the touch screen, go to the System Settings, and so on.



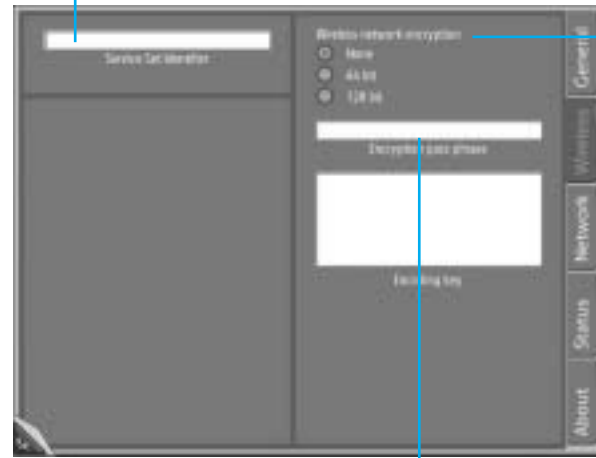
## Set the Wireless Settings

**8**

Check whether the Service Set Identifier (SSID) corresponds to the SSID of your Wireless Access Point (WAP).

By default, the iPronto displays the SSID of the nearest WAP it can detect.

If needed, change the default name of the SSID in this box.



If encryption is enabled in your wireless network, select the correct encryption here.

If encryption is enabled in your wireless network, enter your Encryption pass phrase here. The Encryption pass phrase must be the identical to your WAP's Encryption pass phrase.

The Encoding key text box is automatically filled in.

## Set the Network Settings

**9**

Select one of these Network Configuration options.

**10**

Check whether your home network or your Internet Service Provider uses a proxy.



To create a personal name for your iPronto, enter a name here.

If you use a Proxy, enter your Proxy Port here.

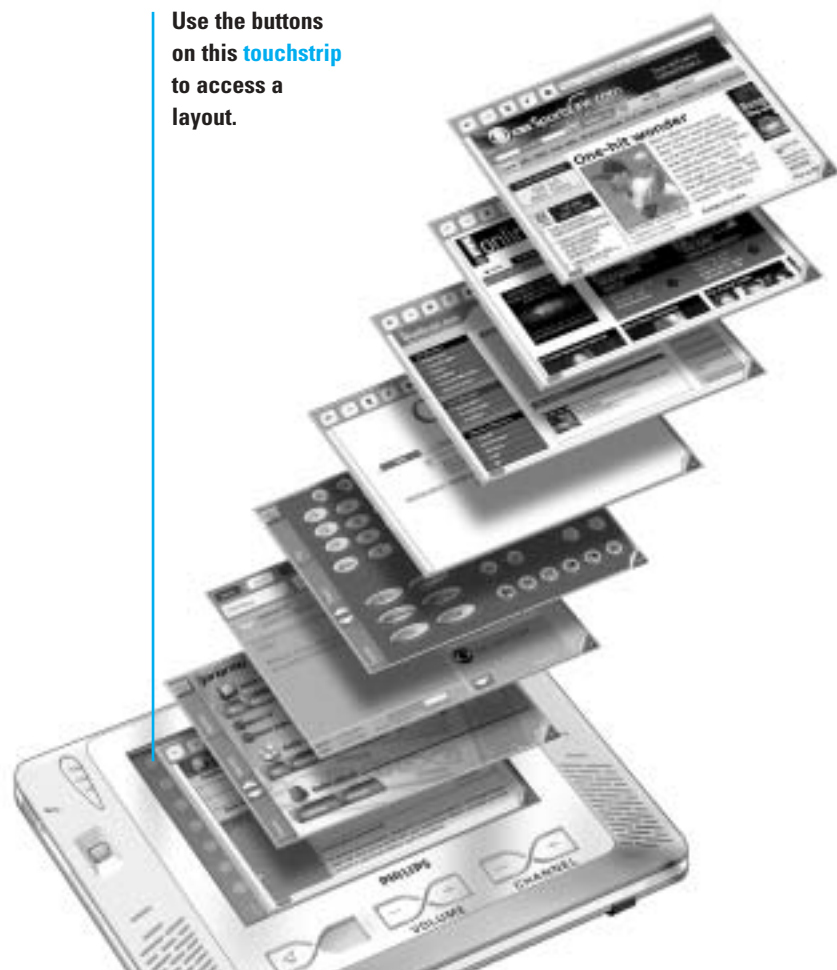
If your Proxy uses Password Authentication, select this option.

If your Proxy uses Password Authentication, enter your Username and Password here.

When you have selected DHCP, these text boxes are automatically filled in. When you have selected Fixed IP, you have to fill these text boxes in manually.

## iPronto is now ready for use

Use the buttons on this touchstrip to access a layout.



This is the layout that contains the EPG application.



When you tap and hold this View Control button, the EPG flipside appears.



Here you can check the signal strength of your iPronto.



The status tab gives you an overview of all the system settings.

## Free Manuals Download Website

<http://myh66.com>

<http://usermanuals.us>

<http://www.somanuals.com>

<http://www.4manuals.cc>

<http://www.manual-lib.com>

<http://www.404manual.com>

<http://www.luxmanual.com>

<http://aubethermostatmanual.com>

Golf course search by state

<http://golfingnear.com>

Email search by domain

<http://emailbydomain.com>

Auto manuals search

<http://auto.somanuals.com>

TV manuals search

<http://tv.somanuals.com>