

Always there to help you

Register your product and get support at
www.philips.com/welcome

AEA3000



User manual

PHILIPS

Contents

1 Important	2
Safety	2
Notice	2

2 Your Wireless Microphone and Receiver	4
Introduction	4
What's in the box	4
Overview of the unit	4

3 Get started	5
Install/replace microphone batteries	5

4 Play	6
Sing along through the wireless microphone	6
Optional: Enjoy music from an existing Hi-Fi system	7

5 Product information	8
Specifications	8

6 Troubleshooting	9
--------------------------	---

1 Important

Safety

Important Safety Instructions

- ① Read these instructions.
- ② Keep these instructions.
- ③ Heed all warnings.
- ④ Follow all instructions.
- ⑤ Do not use this apparatus near water.
- ⑥ Clean only with dry cloth.
- ⑦ Do not block any ventilation openings. Install in accordance with the manufacturer's instructions.
- ⑧ Do not install near any heat sources such as radiators, heat registers, stoves, or other apparatus (including amplifiers) that produce heat.
- ⑨ Only use attachments/accessories specified by the manufacturer.
- ⑩ Refer all servicing to qualified service personnel. Servicing is required when the apparatus has been damaged in any way, such as liquid has been spilled or objects have fallen into the apparatus, the apparatus has been exposed to rain or moisture, does not operate normally, or has been dropped.
- ⑪ Battery usage **CAUTION** – To prevent battery leakage which may result in bodily injury, property damage, or damage to the unit:
 - Install all batteries correctly, + and - as marked on the unit.

- Remove batteries when the unit is not used for a long time.
- Perchlorate Material-special handling may apply. See www.dtsc.ca.gov/hazardouswaste/perchlorate.

- ⑫ Apparatus shall not be exposed to dripping or splashing, keep it away from direct sunlight, naked flames or heat.

Information about the use of batteries:



Caution

- Risk of leakage: Only use the specified type of batteries. Do not mix new and used batteries. Do not mix different brands of batteries. Observe correct polarity. Remove batteries from products that are not in use for a longer period of time. Store batteries in a dry place.
- Risk of injury: Wear gloves when handling leaking batteries. Keep batteries out of reach of children and pets.
- Risk of explosion: Do not short circuit batteries. Do not expose batteries to excessive heat. Do not throw batteries into the fire. Do not damage or disassemble batteries. Do not recharge non-rechargeable batteries.

Notice

Any changes or modifications made to this device that are not expressly approved by Philips Consumer Lifestyle may void the user's authority to operate the equipment.

CE 2150

This product complies with the radio interference requirements of the European Community.

This product is in compliance with the essential requirements and other relevant provisions of Directive 1999/5/EC.

A copy of the EC Declaration of Conformity (DoC) is available in the packaging.



Your product is designed and manufactured with high quality materials and components, which can be recycled and reused.



When this crossed-out wheeled bin symbol is attached to a product it means that the product is covered by the European Directive 2002/96/EC.

Please inform yourself about the local separate collection system for electrical and electronic products.

Please act according to your local rules and do not dispose of your old products with your normal household waste. Correct disposal of your old product helps to prevent potential negative consequences for the environment and human health.



Your product contains batteries covered by the European Directive 2006/66/EC, which cannot be disposed with normal household waste. Please inform yourself about the local rules on separate collection of batteries because correct disposal helps to prevent negative consequences for the environmental and human health.

Environmental information

All unnecessary packaging has been omitted. We have tried to make the packaging easy to separate into three materials: cardboard (box), polystyrene foam (buffer) and polyethylene (bags, protective foam sheet.)

Your system consists of materials which can be recycled and reused if disassembled by a specialized company. Please observe the local regulations regarding the disposal of packaging materials, exhausted batteries and old equipment.



"Made for iPad" means that an electronic accessory has been designed to connect specifically to iPad, and has been certified by the developer to meet Apple performance standards. Apple is not responsible for the operation of this device or its compliance with safety and regulatory standards. Please note that the use of this accessory with iPad may affect wireless performance.

iPad is a trademark of Apple Inc., registered in the U.S. and other countries.

The Bluetooth® word mark and logos are registered trademarks owned by Bluetooth SIG, Inc. and any use of such marks by Philips is under license.

Note

- The type plate is located on the back of the unit.

2 Your Wireless Microphone and Receiver

Congratulations on your purchase, and welcome to Philips! To fully benefit from the support that Philips offers, register your product at www.philips.com/welcome.

If you contact Philips, you will be asked for the model and serial number of this apparatus. The model number and serial number are on the back of the apparatus. Write the numbers here:

Model No. _____

Serial No. _____

Introduction

With the Philips wireless microphone and receiver, you can:

- connect the receiver to your iPad (or both your iPad and an existing Hi-Fi system), and sing along with music from the app (**The Voice: On Stage**) through the wireless microphone.

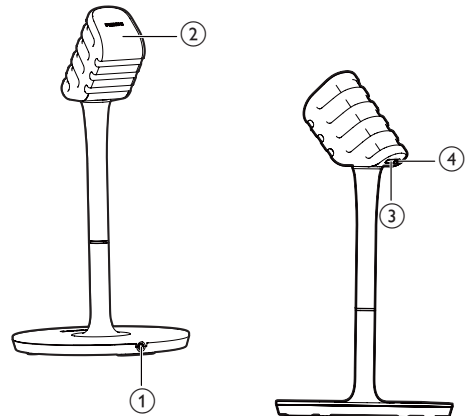
What's in the box

Check and identify the contents of your package:

- Wireless microphone
- Receiver
- 3 × AAA batteries
- Quick start guide
- Safety sheet

Overview of the unit

Wireless microphone



① Line out socket

- (To use the microphone separately) connect to the MIC input socket of an existing Hi-Fi system.

② Battery compartment

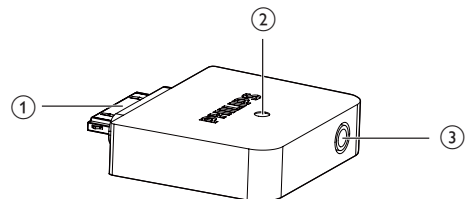
③ OFF/ON

- Switch the microphone on or off.

④ Power indicator

- Light up red when the wireless microphone is switched on.
- Flash red when the battery level is low.

Receiver



① iPad connector

② Bluetooth® indicator

- Indicate the Bluetooth® status.

③ LINE-OUT

- Connect the receiver to an existing Hi-Fi system.

3 Get started

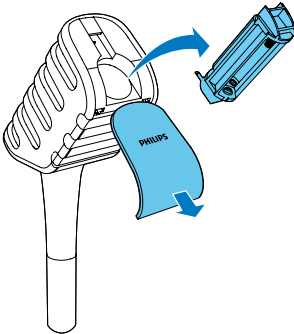
Always follow the instructions in this chapter in sequence.

Install/replace microphone batteries

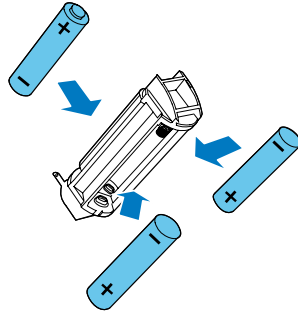
! Caution

- Risk of explosion! Keep batteries away from heat, sunshine, or fire. Never discard batteries in fire.
- Danger of explosion if batteries are incorrectly replaced. Replace only with the same or equivalent type.
- Batteries contain chemical substances, so they should be disposed of properly.

- 1 Open the battery compartment and take out the battery cartridge.



- 2 Insert 3 x AAA batteries (supplied) into the cartridge with correct polarity (+/-) as indicated.



- 3 Push back the battery cartridge, then close the battery compartment.

≡ Note

- If you are not going to use the microphone for a long time, remove the batteries.
- New batteries installed in the microphone support up to 30 hours of continuous use.
- When the power indicator flashes red, it indicates that the power level is low and you need to replace the batteries.

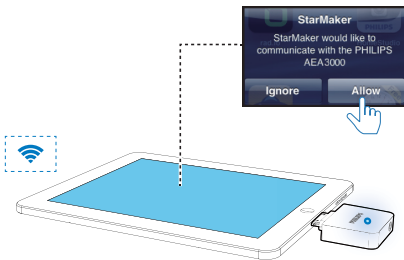
4 Play

Sing along through the wireless microphone

Note

- The effective operation range between the wireless microphone and receiver is approximately 10 meters (30 feet).

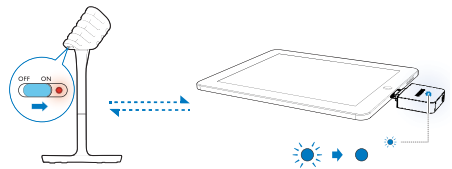
- 1 Connect your iPad to the receiver.
 - ↳ A prompt pops up on the iPad screen, asking you to install the relevant app.



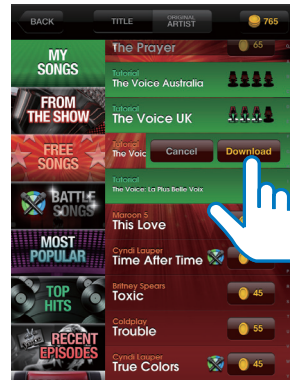
- 2 Tap **YES** on the prompt to install the app (**The Voice: On Stage**) from Apple App Store.
- 3 After successful installation, run **The Voice: On Stage** on the iPad.



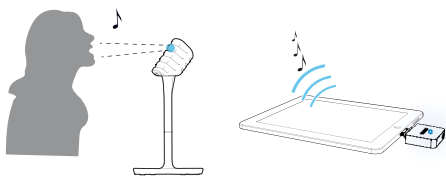
- 4 Slide the **OFF/ON** switch on the wireless microphone to the **ON** position.
 - ↳ The Bluetooth® indicator on the receiver flashes blue.
 - ↳ The wireless microphone starts to pair with the receiver automatically.
 - ↳ After successful pairing and connection, the Bluetooth® indicator turns solid blue.



- 5 Find and download a tutorial from **The Voice: On Stage**, then tap **Sing->RECORD** for how to sing along through the wireless microphone and iPad.



- 6 Select a song from **The Voice: On Stage** and sing along through the wireless microphone.



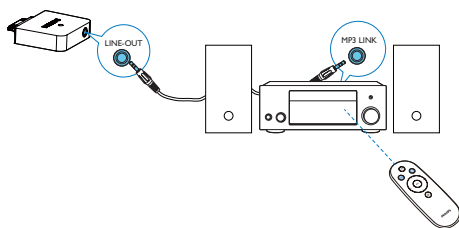
- 2 Power on the existing Hi-Fi system and select the 3.5mm audio input source (see the user manual of the Hi-Fi system for detailed operation).

Tip

- If the wireless microphone remains disconnected from the receiver for more than 15 minutes, it switches to standby mode automatically. To switch it on again, you need to slide the **OFF/ON** switch on the microphone to the **OFF** position and then back to the **ON** position.
- You can use controls available on the app to adjust sound effects.
- If you experience howling or echo, try to increase the distance between the microphone and iPad or adjust the angle of the microphone towards the iPad.

Optional: Enjoy music from an existing Hi-Fi system

For optimal sound effect, you can connect the receiver to an existing Hi-Fi system.



- 1 Connect a 3.5mm audio cable to:
 - the **LINE-OUT** socket on the receiver.
 - the 3.5mm audio input socket on your existing Hi-Fi system.

5 Product information

Weight

- | | |
|--------------|--------|
| • Receiver | 0.02kg |
| • Microphone | 0.33kg |



Note

- Product information is subject to change without prior notice.

Specifications

Microphone

Power Supply	3 × AAA batteries
Directivity	Unidirectional
Sensitivity	-32 ± 3dB

Receiver

Audio Line Out	1000mV ± 100mV RMS 20kohm
Frequency Response	100Hz - 16kHz, ± 3dB
Signal to Noise Ratio	> 85dB
Crosstalk	> 40dB

Bluetooth®

Bluetooth® version	V2.1 + EDR
Frequency band	2.402-2.480 GHzISM Band
Range	10m (free space)

General information

Dimensions (W × H
× D)

- Receiver 41.5 × 45.5 × 10.5mm
- Microphone 162 × 333 × 162mm

6 Troubleshooting



Warning

- Never remove the casing of this device.

To keep the warranty valid, never try to repair the system yourself.

If you encounter problems when using this device, check the following points before requesting service. If the problem remains unsolved, go to the Philips Web page (www.philips.com/support). When you contact Philips, make sure that the device is nearby and the model number and serial number are available.

No power to the wireless microphone

- The batteries may be installed incorrectly or drained. Install or replace the batteries properly (see 'Install/replace microphone batteries' on page 5).
- As a power-saving feature, the microphone switches to standby mode automatically after staying disconnected from the receiver for more than 15 minutes. To switch it on again, you need to slide the **OFF/ON** switch on the microphone to the **OFF** position and then back to the **ON** position.

No sound or poor sound

- Adjust volume on the iPad.
- Adjust volume on the Hi-Fi system connected to the receiver.
- Make sure that you have selected the correct source on the connected Hi-Fi system.
- Make sure that you have connected the receiver to the Hi-Fi system securely.
- Check whether you have connected the iPad securely.
- Check whether you have started music play on the iPad.

Failed to set up connection between the microphone and receiver

- Check whether both the wireless microphone and receiver are switched on. The receiver is switched on automatically when it is connected to an iPad.
- Make sure that the wireless microphone and receiver are within the effective operation range, that is, approximately 10 meters (30 feet).

Howling or echo from the wireless microphone

- Adjust volume on the iPad.
- Adjust volume on the existing Hi-Fi system connected to the receiver.
- Increase the distance between the microphone and iPad (Hi-Fi system) or adjust the angle of the microphone towards the iPad (Hi-Fi system).



Specifications are subject to change without notice
© 2012 Koninklijke Philips Electronics N.V.
All rights reserved.

AEA3000_UM_00_V1.0



Free Manuals Download Website

<http://myh66.com>

<http://usermanuals.us>

<http://www.somanuals.com>

<http://www.4manuals.cc>

<http://www.manual-lib.com>

<http://www.404manual.com>

<http://www.luxmanual.com>

<http://aubethermostatmanual.com>

Golf course search by state

<http://golfingnear.com>

Email search by domain

<http://emailbydomain.com>

Auto manuals search

<http://auto.somanuals.com>

TV manuals search

<http://tv.somanuals.com>