

PENTAX



PENTAX ~~REMOTE~~ Assistant™ 3

Operating Manual

(Version 3.5)



Thank you for purchasing this PENTAX Digital Camera.



This is the manual for “PENTAX REMOTE Assistant 3” software for your Windows PC or Macintosh for enabling you to set and operate this camera from a computer. Please read the separate camera Operating Manual and this manual before using your camera and “PENTAX REMOTE Assistant 3”, in order to get the most out of all the features and functions.

Keep the camera Operating Manual and this manual safe, as they can be valuable tools in clarifying and helping you to understand all the camera capabilities.

Regarding copyrights



Images taken using this camera that are for anything other than personal enjoyment cannot be used without permission according to the rights as specified in the Copyright Act. Please take care, as there are even cases where limitations are placed on taking pictures even for personal enjoyment during demonstrations, performances or of items on display. Images taken with the purpose of obtaining copyrights also cannot be used outside the scope of use of the copyright as laid out in the Copyright Act, and care should be taken here also.

Regarding trademarks

- PENTAX and smc PENTAX are trademarks of PENTAX Corporation.
- PENTAX PHOTO Browser, PENTAX PHOTO Laboratory, PENTAX REMOTE Assistant are trademarks of PENTAX Corporation.
- Mac OS and Macintosh are registered trademarks of Apple Inc.
-  SD logo and SDHC logo are trademarks.
- This product includes DNG technology under license by Adobe Systems Incorporated.
-  The DNG logo is either a registered trademark or trademark of Adobe Systems Incorporated in the United States and/or other countries.
- All other brands or product names are trademarks or registered trademarks of their respective companies.

Disclaimer

- PENTAX is not responsible for any damages resulting from the direct or indirect use of this software or repercussive damages, damage to data, programs or other intangible property, loss of profit or anticipated profit, or dispute with a third party resulting from the use of this software.
 - The specifications of this software are subject to change without notice.
- Symbols used in this manual have the following meanings:

	Gives information that is useful to know.
	Gives cautions and notes about the operation.

The screen pictures shown in this manual may differ depending on the type of computer used.

Contents

Provided Software	3
Software Provided.....	3
System Requirements.....	4
Installing the Software.....	5
When Using Windows	5
When Using Macintosh	7
PENTAX REMOTE Assistant 3.....	8
Connecting the Camera to Your Computer.....	8
Opening PENTAX REMOTE Assistant 3	9
Main Window Layout.....	11
Menu Bar.....	15
Tool Bar.....	17
Connecting the Camera to the Computer.....	19
Connecting the Camera	19
Selecting the Camera for Operations.....	20
[Set Body Number] Dialog Box	21
Taking Pictures	23
Getting Ready to Shoot.....	23
Save Modes	26
Taking Pictures	28
[Shooting Conditions] Dialog Box	30
[Shooting Conditions] Dialog Box.....	30
Displaying/Hiding the [Shooting Conditions] Dialog Box.....	30
Shooting Condition Settings.....	31
Expanded Shooting - Interval/Timer Shooting.....	34
Interval/Timer Shooting	34
Displaying the [Interval/Timer shooting] Dialog Box.....	34
Time Delay	35
Interval	35
Number of Shots	35
Release All Shutters.....	35
Expanded Shooting - Bulb Timer	36
Bulb Timer Shooting.....	36
Displaying the [Bulb Timer] Dialog Box.....	37
Time Delay	37
Interval	37

Number of Shots	38
Exposure Time	38
Composite	38
[Set-up]/[Date Adjust] Dialog Box	40
[Set-up] Dialog Box	40
Displaying the [Set-up] Dialog Box.....	40
Set-up Settings.....	41
[Date Adjust] Dialog Box	42
[USER Mode Settings] Dialog Box	43
[USER Mode Settings] Dialog Box.....	43
Displaying the [USER Mode Settings] Dialog Box	43
USER Mode Settings	44
Saving the Settings to the Computer	44
Loading a USER Mode Settings File.....	44
[Custom Setting] Dialog Box	45
[Custom Setting] Dialog Box	45
Displaying the [Custom Setting] Dialog Box.....	45
Custom Settings.....	46
Changing the Custom Settings	47
Saving the Custom Settings to the Computer	47
Loading a Custom Settings File	47
Resetting the Custom Settings.....	47
[Measure Manual White Balance] Dialog Box	48
[Measure Manual White Balance] Dialog Box.....	48
Displaying the [Measure Manual White Balance] Dialog Box	48
Shutter Release	49
[Change Area].....	49
[Measure]	50
[Options] Dialog Box	51
[Options] Dialog Box	51
Displaying the [Options] Dialog Box.....	51
Auto-Save Setting	52
Remote Release Button Function	53
Display Messages	54

The CD-ROM (S-SW75) provided with the **K20D** contains the following software:

- PENTAX REMOTE Assistant 3



This manual describes PENTAX REMOTE Assistant 3 with screen images from Windows XP.

The operation of this software application is nearly the same on Macintosh with the exception of some keys. For information on Macintosh-specific instructions, see the sections labeled "For Macintosh" or the online help.

Software Provided

PENTAX REMOTE Assistant 3

(9 languages: English, French, German, Spanish, Italian, Russian, Chinese [traditional and simplified], Korean, Japanese)

PENTAX REMOTE Assistant 3 is software for operating and setting PENTAX Digital SLR cameras (**K10D** and **K20D**) from your computer via USB connection.

Shooting and setting operations featured on the camera, as well as functions not featured on the camera such as superimposed composite images in bulb timer shooting are available.

Additionally, images shot using PENTAX REMOTE Assistant 3 are saved directly to your PC. PENTAX REMOTE Assistant 3 saves you the trouble of transferring images to your PC and allows you to shoot pictures without worrying about how much memory is left.

System Requirements

The following are the system requirements for installing PENTAX REMOTE Assistant 3 and operating and setting the camera from your PC.

Windows System Requirements

- Operating System: Computer with Windows XP (Home Edition/ Professional/x64 Edition) SP2 or later or Windows Vista preinstalled (USB 2.0 port must be standard equipment)
- CPU : Pentium 4 or higher (Pentium 4 2.0 GHz or faster recommended)
- RAM : 512 MB or more
- Monitor : 1024×768 pixels or more
- Free Disk Space : 250 MB or more (500 MB or more recommended)



We recommend using the AC adapter (sold separately) when connecting the camera to the computer. If the battery becomes depleted during image transfer, the image data or SD Memory Card may be damaged.

Macintosh System Requirements

- Operating System: Macintosh with Mac OS X 10.3.9 or later preinstalled (USB 2.0 port must be standard equipment)
- CPU : PowerPC G4 1GHz or faster (Universal Binary format)
- RAM : 512 MB or more
- Monitor : 1024×768 pixels or more
- Free Disk Space : 250 MB or more (500 MB or more recommended)



We recommend using the AC adapter (sold separately) when connecting the camera to the computer. If the battery becomes depleted during image transfer, the image data or SD Memory Card may be damaged.

Here is the procedure for installing PENTAX REMOTE Assistant 3. If an earlier version of PENTAX REMOTE Assistant 3 is installed, it will be overwritten.

If you wish to continue to use **istD* with PENTAX REMOTE Assistant, install PENTAX REMOTE Assistant 3 without uninstalling PENTAX REMOTE Assistant. (The applications will coexist.)

When multiple accounts have been setup in Windows XP/Windows Vista or Mac OS X, log on with an account that has administrative rights before installing the software.

When Using Windows

1 Turn your computer on.

Close any other software that is open.

2 Place the provided CD-ROM (S-SW75) into the CD-ROM drive on your computer.

The PENTAX Software Installer screen appears.

- **If the PENTAX Software Installer screen does not appear**

Display the PENTAX Software Installer screen following the steps below.

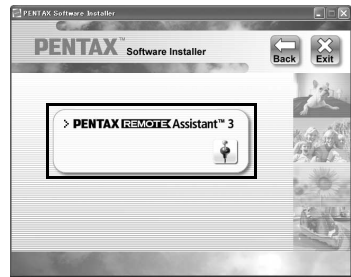
- 1) Click [My Computer] from the start menu.
- 2) Double-click the [CD-ROM drive (S-SW75)] icon.
- 3) Double-click [Setup.exe].

3 Choose a language from the displayed screen.

The software selection screen appears.



4 Click [PENTAX REMOTE Assistant].



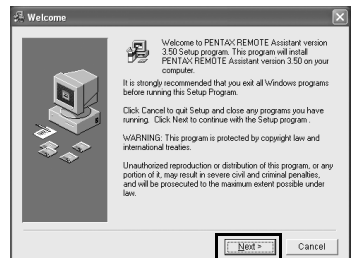
5 Select the desired language in the Select Language screen and click [OK].



Some operating environments select the language automatically. Continue with the installation in step 6. The installer starts.

6 The installer starts. Click [Next].

Follow the instructions on the screen and continue with the installation.



When Using Macintosh

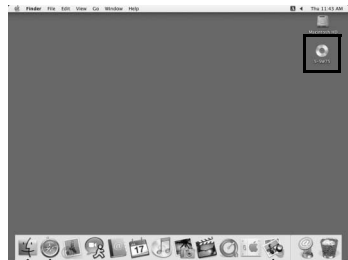
1 Turn on your Macintosh.

Close any other software that is open.

2 Place the provided CD-ROM (S-SW75) into the CD-ROM drive on your Macintosh.

3 Double-click the [CD-ROM drive (S-SW75)] icon.

The contents of the CD-ROM are displayed.



4 Double-click the [PENTAX Installer] icon.

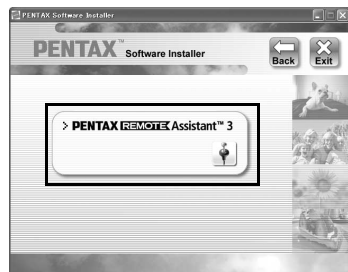
The PENTAX Software Installer screen appears.



5 Select the operating system to install to.

6 Click [PENTAX REMOTE Assistant].

Follow the instructions on the screen and continue with the installation.



This section explains how to start up and close PENTAX REMOTE Assistant 3, the main window layout and the functions that are available.

Connecting the Camera to Your Computer

To use the PENTAX REMOTE Assistant 3, connect your camera to your computer using the USB cable supplied with the camera. (p.19)
You can connect the camera to the computer before starting up or while operating the PENTAX REMOTE Assistant 3. The program recognizes the camera, enabling you to use the program functions.
You cannot use the functions of the PENTAX REMOTE Assistant 3 when a camera is not connected to the computer.



- Auto Power Off does not work when the camera is connected to the computer.
- It is recommended to power the camera with the AC adapter when using the PENTAX REMOTE Assistant 3 with the camera connected to the computer for a long period of time.
- Before using the PENTAX REMOTE Assistant 3, update the **K10D** firmware to Version 1.20 or later. Visit <http://www.pentax.co.jp/english/support/> for information on updating the firmware.

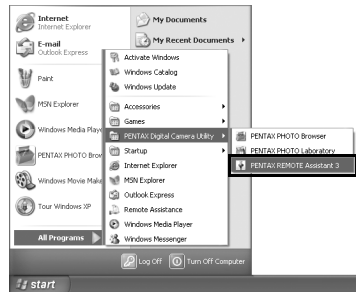
Opening PENTAX REMOTE Assistant 3

For Windows

1 Select the start menu on the desktop.

2 Select [All Programs] - [PENTAX Digital Camera Utility] - [PENTAX REMOTE Assistant 3].

PENTAX REMOTE Assistant 3 starts and the main window is displayed.



● Closing PENTAX REMOTE Assistant 3

Select [Exit] from the [File] menu on the main window.



You can save the settings on the [USER mode settings] and [Custom Setting] dialog boxes to the computer. Save these settings, if necessary, before closing the PENTAX REMOTE Assistant 3. (p.43, p.45)

For Macintosh

1 Double-click the [PENTAX Digital Camera Utility] folder in [Applications] on the hard disk.

2 Double-click the [PENTAX REMOTE Assistant 3] icon.

PENTAX REMOTE Assistant 3 starts and the main window is displayed.




● Closing PENTAX REMOTE Assistant 3

Select [Quit PENTAX REMOTE Assistant 3] from the [PENTAX REMOTE Assistant 3] menu on the desktop menu bar.





You can save the settings on the [USER mode settings] and [Custom Setting] dialog boxes to the computer. Save these settings, if necessary, before closing the PENTAX REMOTE Assistant 3. (p.43, p.45)

Starting up from PENTAX PHOTO Browser 3

In the PENTAX PHOTO Browser 3 window, select [PENTAX REMOTE Assistant] → [PENTAX REMOTE Assistant 3] from the [Tools] menu. You can also click  on the toolbar in the PENTAX PHOTO Browser 3 window and select [PENTAX REMOTE Assistant 3] from the drop-down menu.

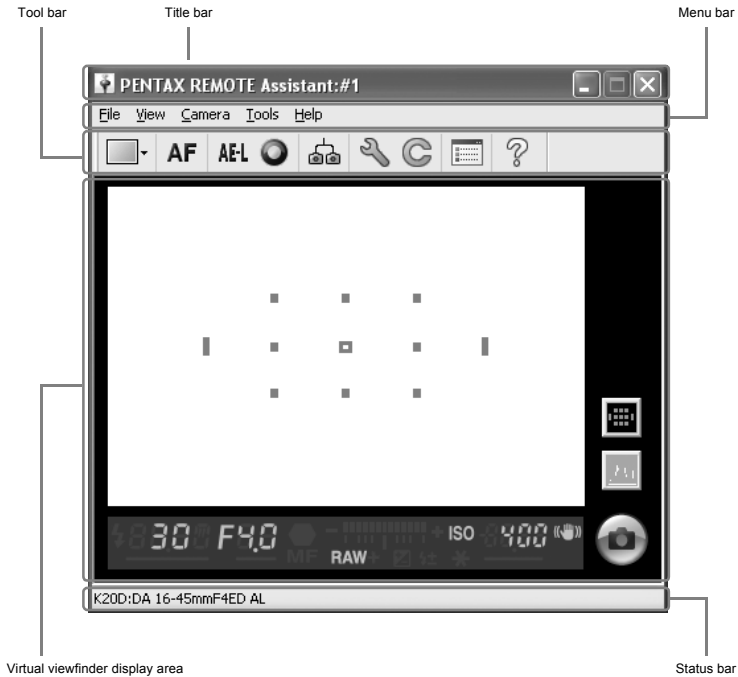
The PENTAX REMOTE Assistant 3 starts and the main window is displayed.



- If PENTAX REMOTE Assistant 3 is not installed properly, [PENTAX REMOTE Assistant] is not available and cannot be selected on the [Tools] menu in the PENTAX PHOTO Browser 3 window. In this case, reinstall the PENTAX REMOTE Assistant 3.
- If you are using **istD* digital SLR and PENTAX REMOTE Assistant (Ver. 1) for **istD* is installed properly, you can start and use this program from PENTAX PHOTO Browser 3. (Select [PENTAX REMOTE Assistant] from the [Tools] menu or click  on the toolbar and select [PENTAX REMOTE Assistant]. PENTAX REMOTE Assistant Ver. 1 can only be used with **istD*.)
- Click  on the toolbar to start the version selected in the drop-down menu.

Main Window Layout

This section explains the layout of the PENTAX REMOTE Assistant 3 main window and the functions of the various window elements.



- When multiple cameras are connected to the computer, one main window is displayed for each camera.
- The camera body number is displayed in the title bar and the camera model name and attached lens name are displayed in the status bar of each main window. (p.12, p.14)

Title Bar

The title bar displays the body number of the camera corresponding to the main window. You can use the [Set body number] dialog box of this program to assign a body number to the camera. (p.21)

Menu Bar

You can use the menu bar to select remote shooting operation and camera settings. You can also use the menu bar to change the PENTAX REMOTE Assistant 3 settings. (p.15)

Toolbar

The toolbar displays the icons of frequently used functions available in the menus. Click an icon on the toolbar or select an item from a drop-down list on the toolbar to set or operate that function. (p.17)

Virtual Viewfinder Display Area



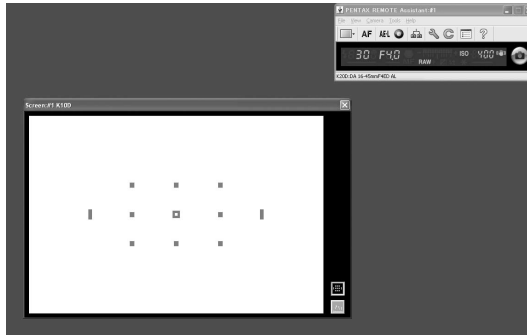
The image captured when shooting with the PENTAX REMOTE Assistant 3 is displayed on the virtual viewfinder screen.


The remote shutter release button for shooting from PENTAX REMOTE Assistant 3 is also displayed in the virtual viewfinder display area. (p.28)
The following shooting information can also be displayed.

Focusing area indicator	When the focusing area display button is activated, the focusing area indicator appears gray. In addition, when the AF point switching dial on the camera is set to SEL , you can use the mouse to specify the autofocus area of the image. The focusing AF point is displayed red when an image is focused.
Histogram	When the histogram button is activated, a histogram of the image just previewed in the viewfinder display area is displayed.
Viewfinder shooting information	This displays the same shooting information visible in the viewfinder on the connected camera.
Checked Images	This shows or hides the Checked images pane.



The virtual viewfinder screen can be detached from the main window. (Select [Separate screen display] from the [View] menu.) (p.15)



To dock the floating virtual viewfinder screen to the main window, click  in the upper right corner of the virtual viewfinder screen.

Status Bar

This displays the model name of the connected camera and the name of the attached lens.

Menu Bar

This executes functions or sets various settings of PENTAX REMOTE Assistant 3.

For Macintosh, the Menu bar appears at the top of the desktop.


[File] menu

Single shot mode	Takes one picture at a time with the PENTAX REMOTE Assistant 3 and saves it to a specified location. (p.26)
Buffer select mode	Takes multiple pictures at a time with the PENTAX REMOTE Assistant 3 and saves them together or saves only the specified pictures. (p.26)
Auto save mode	Automatically saves pictures taken with the PENTAX REMOTE Assistant 3 to a set location. (p.26) Select [Options] from the [Tools] menu to set the save location. (p.51)
Disconnect	Disconnects the camera and closes the main window.
Exit	Disconnects all cameras connected to the computer and closes the PENTAX REMOTE Assistant 3. (p.9)

[View] menu

Detailed viewfinder display	Displays a detailed version of the virtual viewfinder screen of the main window. Displays the virtual viewfinder screen, focusing area display button, and histogram button. (p.13)
Simple viewfinder display	Displays a simplified version of the virtual viewfinder display area of the main window. Displays only the shooting information in the viewfinder, not the virtual viewfinder screen, focusing area display button, or histogram button. (p.13)
Separate screen display	Detaches the virtual viewfinder display area from the main window. This creates the same layout for the main window as when selecting [Simple viewfinder display] from the [View] menu. The virtual viewfinder display area can be detached when [Detailed viewfinder display] is selected.
Toolbar	Displays/hides the toolbar. (p.17)
Status bar	Displays/hides the status bar. (p.14)
Shooting Conditions	Displays/hides the [Shooting Conditions] dialog box. (p.30)
Switch body	When multiple cameras are connected to the computer, this allows you to select from the submenu the camera to be operated with the PENTAX REMOTE Assistant 3. (p.20)
Arrange windows	Rearranges all open windows.

[Camera] menu

Shutter release	Releases the shutter on the camera. The camera shutter operates according to the settings in the PENTAX REMOTE Assistant 3. You can set the shutter release lock function in the [Options] dialog box when the exposure mode is set to B (Bulb) or when the drive mode is set to  (Continuous shooting). (p.53)
AF execution	Operates the autofocus function on the camera.
AE lock	Turns the camera AE lock on/off.
Green Button	Operates the same as the green button on the camera in accordance with the camera setting conditions.
Measure manual white balance	Displays the [Measure manual white balance] dialog box. (p.48)
Set-up	Displays the [Set-up] dialog box. (p.40)
Date Adjust	Displays the [Date Adjust] dialog box. (p.40)
USER mode settings	Displays the [USER mode settings] dialog box. (p.43)
Custom Setting	Displays the [Custom Setting] dialog box. (p.45)

[Tools] menu

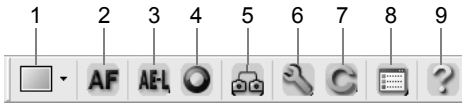
Expanded shooting	Enables [Interval/Timer shooting] and [Bulb timer] expanded shooting from the submenu. (p.34) (p.36)
Synchronous shooting	Enables synchronized shooting for all cameras with this function activated.
Set body number	Displays the [Set body number] dialog box. (p.21)
Options	Displays the [Options] dialog box. (p.51)

[Help] menu

PENTAX REMOTE Assistant Help	Displays the help window.
About PENTAX REMOTE Assistant	Displays the version information of the PENTAX REMOTE Assistant 3.

Tool Bar

This section explains the layout and operations of the toolbar of the PENTAX REMOTE Assistant 3.



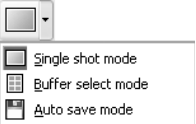


Displaying/Hiding the Toolbar







To display the toolbar, select [Toolbar] from the [View] menu. A check (☑) is added to the left of [Toolbar] on the [View] menu and the toolbar is displayed on the main window.

To hide the toolbar, select [Toolbar] from the [View] menu. The check (☑) is removed and the toolbar is removed from the main window.

Meaning of the Toolbar Icons

The following explains the meaning of the toolbar icons, as shown from left to right.

Number	Icon (button)	Description
1	 Save Mode	Use the drop-down list to select the save mode ([Single shot mode], [Buffer select mode], or [Auto save mode]) when shooting with PENTAX REMOTE Assistant 3. This is the same as selecting [Single shot mode], [Buffer select mode], or [Auto save mode] from the [File] menu. (p.26)
2	 AF execution	Operates the autofocus function on the camera. This is the same as selecting [AF execution] from the [Camera] menu.
3	 AE lock	Turns the camera AE lock on/off. This is the same as selecting [AE lock] from the [Camera] menu.

Number	Icon (button)	Description
4	 Green Button	<p>Operates the same as the green button on the camera in accordance with the camera setting conditions.</p> <p>This is the same as selecting [Green Button] from the [Camera] menu.</p>
5	 Synchronous shooting	<p>When activated, this releases the shutter for the camera at the same time as the shutters are released on the main windows of the other cameras.</p> <p>This is the same as selecting [Synchronous shooting] from the [Tools] menu.</p>
6	 Set-up	<p>Displays the [Set-up] dialog box.</p> <p>This is the same as selecting [Set-up] from the [Camera] menu. (p.40)</p>
7	 Custom Setting	<p>Displays the [Custom Setting] dialog box.</p> <p>This is the same as selecting [Custom Setting] from the [Camera] menu. (p.45)</p>
8	 Options	<p>Displays the [Options] dialog box.</p> <p>This is the same as selecting [Options] from the [Tools] menu. (p.51)</p>
9	 Help	<p>Displays the help window.</p> <p>This is the same as selecting [PENTAX REMOTE Assistant Help] from the [Help] menu.</p>

Connecting the Camera to the Computer

This section explains how to connect your camera to your computer.

Connecting the Camera

To use the PENTAX REMOTE Assistant 3, connect your camera to your computer using the USB cable supplied with the camera.

You can connect the camera to the computer before starting up or while operating the PENTAX REMOTE Assistant 3. The program recognizes the camera, enabling you to use the program functions.

You cannot use the functions of the PENTAX REMOTE Assistant 3 when a camera is not connected to the computer.

PENTAX REMOTE Assistant 3 can recognize and operate multiple cameras at the same time. When multiple cameras are connected to the computer, one main window is displayed for each connected camera.



- Auto Power Off does not work when the camera is connected to the computer.
- It is recommended to power the camera with the AC adapter when using the PENTAX REMOTE Assistant 3 with the camera connected to the computer for a long period of time.

Connecting One Camera

Connect the USB cable supplied with the camera to the USB port on the computer and the USB/Video terminal on the camera.

Connecting Multiple Cameras

If the computer has multiple USB ports, connect each camera to a USB port on the computer.

If the computer has only one USB port, use a USB hub to connect the cameras to the computer.



- Depending on the type of USB hub you are using, the cameras may not connect to the computer properly.
- The PENTAX REMOTE Assistant 3 guarantees operation for up to four simultaneously connected cameras. If you connect additional cameras to the computer, the PENTAX REMOTE Assistant 3 may not recognize or operate the cameras correctly.

Selecting the Camera for Operations

If multiple cameras are connected to the computer, you can use the [Switch body] submenu of the [View] menu to select the camera you want to operate and set.

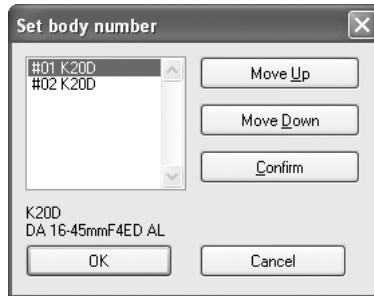


- You can use the [Set body number] dialog box to set and check the body number for each camera. (p.21)
- The body number set to each camera is also displayed on the LCD panel of the individual camera.

[Set Body Number] Dialog Box

You can use the [Set body number] dialog box to change the body number of each camera and the order in which the body numbers are displayed on the [Switch body] submenu of the [View] menu.

To display the [Set body number] dialog box, select [Set body number] from the [Tools] menu.



The body numbers of the currently connected cameras are displayed in the list box in the same order as shown on the [Switch body] submenu of the [View] menu. (Cameras that have an assigned body number but are not connected are displayed as [----].) The camera with body number [#01] is designated as the master.

When you select a camera from the list, the model name and attached lens name for that camera are displayed in the area below the list box.

Confirming the Selected Camera

When you select a camera from the list and click [Confirm], the self-timer lamp of the selected camera lights. You can confirm the body number and camera response.

Sorting the [Switch Body] List

Select a camera from the list and click [Move Up] or [Move Down]. The body number of the camera changes according to position of the camera in the list.

Click [OK] to save the changes and apply the changes to the [Switch body] submenu of the [View] menu.



- Clicking [Cancel] closes the dialog box without saving any changes to the list or the body numbers.
- Set body numbers are saved and assigned to the same cameras the next time they are connected to the computer. When a camera is newly added and "The same body number already exists. A temporary number will be set and the body number dialog box will be displayed." is displayed, a body number is automatically reassigned. In such a case, confirm the body number in the [Set body number] dialog box and set again as necessary.

This section explains how to take pictures with the PENTAX REMOTE Assistant 3. Before taking pictures with the PENTAX REMOTE Assistant, be sure to read the sections Getting Ready to Shoot and Save Modes below.

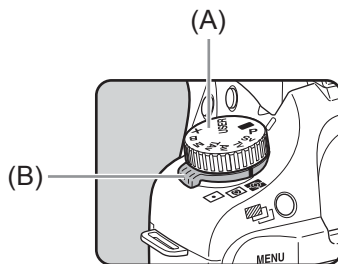
Getting Ready to Shoot

In addition to connecting the camera to the computer, be sure to make the following preparations and take the precautions described below before taking pictures with the PENTAX REMOTE Assistant 3.

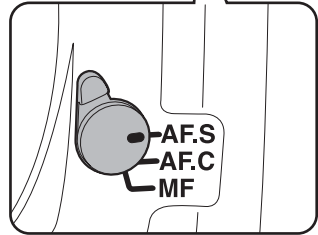
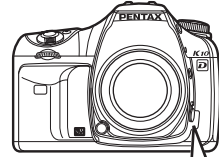
Camera Settings

The following settings are to be made using the dial and buttons on the camera and cannot be made with the PENTAX REMOTE Assistant 3. Be sure to make these settings on the camera before taking pictures.

Exposure Mode	Select with the mode dial (A) on the camera.
AE Metering	Select with the metering mode lever (B) on the camera.

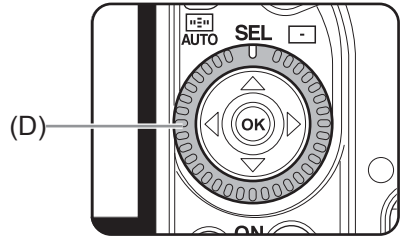


Focus Mode Select with the focus mode lever (C) on the camera.



(C)

Focusing Area (AF Point) Mode Set with the AF point switching dial (D) on the camera.



(D)



- The four camera settings above are displayed on the [Shooting Conditions] dialog box. (p.30)
- When the mode dial on the camera is set to **USER**, you can use the [Shooting Conditions] dialog box of the PENTAX REMOTE Assistant 3 to select the exposure mode. (p.30)

Precautions

Review the following precautions before taking pictures with the PENTAX REMOTE Assistant 3.

- Auto Power Off does not work when the camera is connected to the computer.
It is recommended to power the camera with the AC adapter when using the PENTAX REMOTE Assistant 3 with the camera connected to the computer for a long period of time.
- Check the location of the camera.
The PENTAX REMOTE Assistant operates the camera from a remote location. Therefore, be sure to set up the camera according to the location of the subject and computer, and use a tripod or other method to secure the camera at a stable location that provides for an easy connection to the computer. If you are taking pictures outside or frequently change the position of the camera, you may find it useful to use a notebook computer.
- Check the save location and available memory on your computer.
Regardless of the selected save mode, be sure to set the save location for the pictures to be taken and confirm that the save location has sufficient available memory. It is recommended that you prepare a secondary hard drive or other media device, especially when taking pictures in RAW format or RAW+ format.

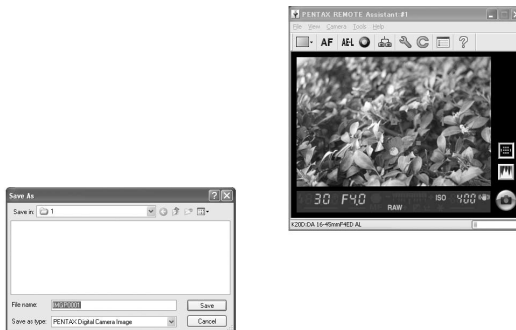
Save Modes

There are three modes for saving pictures taken with PENTAX REMOTE Assistant 3 to the computer.

Single Shot Mode


In this mode, one picture is taken at a time and saved to a specified location.

When you take pictures in this mode, each captured image is displayed on the virtual viewfinder screen along with the [Save As] dialog box.



The [Save As] dialog box displays the destination folder and file name set with the [Options] dialog box. You can also change the destination folder and file name before saving the image. (p.51)

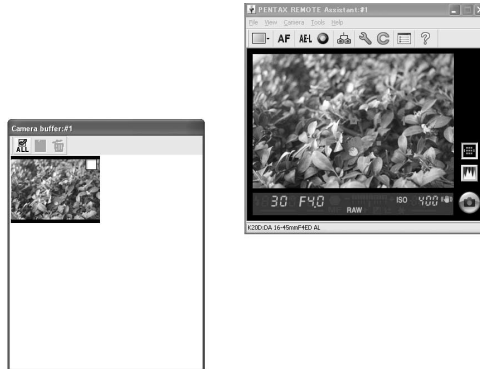
Caution

- Clicking [Cancel] or  closes the [Save As] dialog box and deletes the image without saving it.
- Turning off the camera while the [Save As] dialog box is displayed deletes the image without saving it.

Buffer Select Mode

In this mode, you can take multiple pictures at a time and save them together or save only the specified pictures.

When you take pictures in this mode, the [Camera buffer] window is displayed. For each picture taken, an image of the picture is added to the [Camera buffer] window.




You can resize the [Camera buffer] window by dragging the sides or corners of the window.



- In buffer select mode, the captured images are temporarily stored to the buffer memory of the camera. Even if the images are stored to the computer, they are not deleted from the buffer memory of the camera. Once the buffer memory of the camera becomes full, you cannot take any more pictures. Be sure to delete images saved to the computer or unneeded images from the buffer memory accordingly.
- If you change the save mode (to single shot mode or auto save mode) while thumbnails are displayed on the [Camera buffer] window, the message [The camera buffer memory will be cleared. OK?] is displayed. Clicking [OK] deletes the images displayed on the [Camera buffer] window and the images in the buffer memory of the camera.
- Turning the camera off also deletes the images displayed on the [Camera buffer] window and the images in the buffer memory of the camera.

A checkbox is displayed in the upper right corner of each thumbnail on the [Camera buffer] window. You can select an image by clicking the checkbox and adding a check (☑), and then use the toolbar on the [Camera buffer] window to perform the operations below.



To select all the images on the [Camera buffer] window, click  on the toolbar.



Saves the selected image(s). The [Save As] dialog box is displayed for each image. The [Save As] dialog box displays the destination folder and file name set with the [Options] dialog box. You can also change the destination folder and file name before saving the image. (p.51)



Deletes the selected image(s). A warning dialog box is displayed. Click [OK] after confirming the operation.

Auto Save Mode

In this mode, captured images are saved automatically to a set location. Use the [Options] dialog box to set the destination folder and the file naming conventions. (p.51)

Taking Pictures

Checking the Composition


You cannot use the virtual viewfinder screen of the PENTAX REMOTE Assistant 3 to check the composition of the picture prior to shooting. Use the viewfinder on the camera to compose the picture.

Setting the Shooting Conditions

You can use the [Shooting Conditions] dialog box to set and check the exposure and image quality settings. (p.30)

AF Execution, AE Lock, and Green Button

After checking the composition, perform the following operations as necessary before taking pictures.

<p>Select [AF execution] from the [Camera] menu or, click AF (AF execution) on the toolbar</p>	<p>Operates the autofocus function on the camera. Use this when taking pictures in autofocus mode. This is the same as pointing the lens toward the subject in autofocus mode and pressing the shutter release button on the camera halfway or the AF button on the camera. In the virtual viewfinder display area, the focused AF point is displayed in red.</p>
<p>Select [AE lock] from the [Camera] menu or, click AE-L (AE lock) on the toolbar</p>	<p>Turns the camera AE lock on/off. This is the same as pressing the AE-L button on the camera.</p>
<p>Select [Green Button] from the [Camera] menu or, click  (Green Button) on the toolbar</p>	<p>Operates the same as the green button on the camera in accordance with the camera setting conditions.</p>

Taking the Picture

Select [Shutter release] on the [Camera] menu or click the remote shutter release button to release the shutter on the active camera and take a picture.

When you select [Shutter release] on the [Camera] menu or click the remote shutter release button, the operation of the shutter on the camera may differ depending on the camera setting. For more information, see the Operating Manual of the camera or [Save Modes] in “Taking Pictures” (p.26) and the “[Options] Dialog Box” (p.51) in this manual.

This section explains the settings on the [Shooting Conditions] dialog box.


[Shooting Conditions] Dialog Box

You can use this dialog box to check the shooting settings of the camera and change them as necessary.

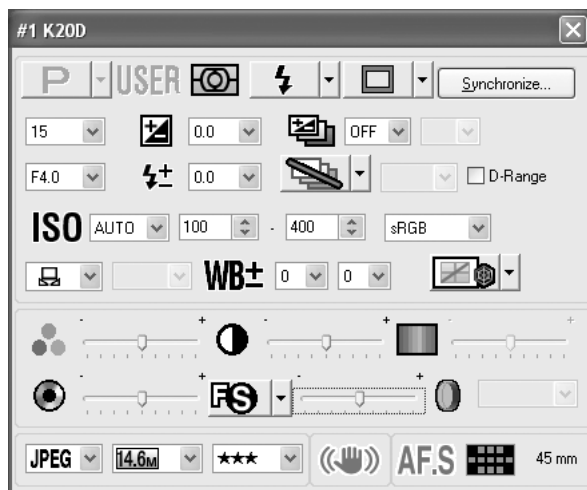
One dialog box is displayed for each connected camera.

Displaying/Hiding the [Shooting Conditions] Dialog Box

When you connect the camera to the computer and start up the PENTAX REMOTE Assistant 3, the [Shooting Conditions] dialog box for the connected camera is displayed.

To hide this dialog box, select [Shooting Conditions] from the [View] menu to remove the check next to the menu item, or click  in the upper right corner of the dialog box.

To display this dialog box again, select [Shooting Conditions] from the [View] menu.






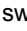
One [Shooting Conditions] dialog box is displayed for each connected camera. To display the [Shooting Conditions] dialog box for another connected camera, select the desired camera from the [Switch body] submenu on the [View] menu, and then select [Shooting Conditions] from the [View] menu. (p.20)

Shooting Condition Settings

The [Shooting Conditions] dialog box displays the current settings on the camera. When any changes are made to the settings using this dialog box, the changes are applied to the settings on the camera.

Exposure Mode	This is only activated and can be changed when the mode dial on the camera is set to USER .
AE Metering	You cannot change this setting using the PENTAX REMOTE Assistant 3.
Flash Mode	You can change this setting according to the shooting mode. You can set this even when the built-in flash on the camera is not popped up. You cannot select w (Wireless mode) when the drive mode is set to 3 (3 sec. delay shooting).
Drive Mode	You can change this setting. If you select 3 (3 sec. delay shooting) when the flash mode is set to w (Wireless mode), the flash mode changes to ⚡ (Flash On). You cannot select ∞ (Continuous shooting) when the exposure mode is set to B (Bulb). When the K20D is connected, ∞ (Burst Shooting) cannot be selected.
Synchronize	You can copy the current settings to other cameras when multiple cameras are connected to the computer. Click [Synchronize] to display the [Synchronize shooting conditions] dialog box. Add a check next to the body number of the camera you wish to set the same conditions on, and then click [OK].
Shutter Speed	This setting is available and can be changed when the shooting mode is set to P (Hyper-program), Tv (Shutter priority), TAv (Shutter & Aperture priority), or M (Hyper-manual).
Aperture	This setting is available and can be changed when the shooting mode is set to P (Hyper-program), Av (Aperture priority), TAv (Shutter & Aperture priority), M (Hyper-manual), B (Bulb), or X (Flash X-sync speed).

EV Compensation	This setting is available and can be changed when the shooting mode is set to P (Hyper-program), Sv (Sensitivity priority), Tv (Shutter priority), Av (Aperture priority), or TAv (Shutter & Aperture priority).
Flash Compensation	This setting is available and can be changed when the shooting mode is set to a mode other than ■ (Green).
Exposure Bracket	This setting is available and can be changed when the shooting mode is set to a mode other than ■ (Green) or B (Bulb). Sets the number of frames and the step interval.
Extended Bracket	This setting is available and can be changed when the shooting mode is set to a mode other than ■ (Green). Sets the type of bracket shooting and step interval. The available types of bracket shooting are [White Balance], [Sharpness], [Saturation], [Contrast] and [Hue]. [Hue] is available only for the K20D and [Saturation] and [Hue] are not available when Image Tone is set to [Monochrome]. The available step intervals vary depending on the connected PENTAX camera model.
Expand Dynamic Range	When the K20D is connected, select [D-Range] to enable wide dynamic range processing.
Sensitivity	You can set this to [AUTO] or from [100] to [3200] (or up to 6400 according to the setting in the [Custom Setting] dialog box). However, you can only set up to 1600 when the shooting mode is set to B (Bulb) or when the K10D is connected, and you can only select [AUTO] when the shooting mode is set to TAv (Shutter & Aperture priority). You cannot select [AUTO] when the exposure mode is set to M (Hyper-manual), B (Bulb), or X (Flash X-sync speed). Options available in the [Sensitivity] pull-down menu differ depending on the [Exposure Mode] setting and [Sensitivity Steps] setting in the [Custom Setting] dialog box. When this is set to [AUTO], you can set the upper and lower limits of the automatic sensitivity correction range.
Color Space	You can select from [sRGB] or [AdobeRGB]. You cannot change this setting when the K10D is connected and the Custom Setting is set to [Off].
White Balance	You can change this setting. When the color temperature is specified, you can select the color temperature from the pull-down list. You can also fine tune the GM compensation and BA compensation. Set [Fine tune when AWB] to [Enabled] in the [Custom Setting] dialog box to fine tune when white balance is set to Auto.

Image Tone	You can change this setting. When the K20D is connected, select from [Bright], [Natural], [Portrait], [Landscape], [Vibrant] and [Monochrome]. If [Monochrome] is selected, [Toning] and [Filter Effect] are enabled in place of [Saturation] and [Hue]. When the K10D is connected, select [Bright] or [Natural].
Saturation	You can change this setting (except when [Image Tone] is set to [Monochrome]). The available number of levels differs depending on the connected camera.
Hue	When the K20D is connected, you can change this setting (except when [Image Tone] is set to [Monochrome]).
Contrast	You can change this setting. The available number of levels differs depending on the connected camera.
Fine Sharpness	When the K20D is connected, click the  (Sharpness) icon to switch to  (Fine Sharpness).
Sharpness	You can change this setting. The available number of levels differs depending on the connected camera.
Toning	You can change this setting when the K20D is connected and [Image Tone] is set to [Monochrome].
Filter Effect	You can change this setting when the K20D is connected and [Image Tone] is set to [Monochrome].
Image Save Mode	You can change the file format, the number of recorded pixels, and the JPEG quality.
Shake Reduction	You cannot change this setting using the PENTAX REMOTE Assistant 3.
Autofocus Mode	You cannot change this setting using the PENTAX REMOTE Assistant 3.
AF Point (focusing area)	You cannot change this setting using the PENTAX REMOTE Assistant 3.
Lens focal length	You cannot change this setting using the PENTAX REMOTE Assistant 3.




- Depending on the models or conditions of the cameras to which the settings are to be copied, some shooting conditions may not be able to be copied when [Synchronize] is clicked.
- For more information, see the Operating Manual of the camera.

Expanded Shooting - Interval/Timer Shooting

This section explains the settings of and how to take pictures with interval/timer shooting.

Interval/Timer Shooting

You can use interval shooting to take multiple pictures at a specified time interval, and you can use timer shooting to start shooting at a specified time.

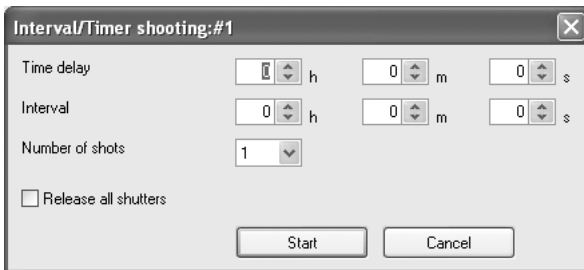
Click [Start] to take pictures with the interval/timer shooting settings. To cancel this operation, click [Cancel] or click  in the upper right corner of the dialog box.



If any frames cannot be captured during interval shooting because the subject was out of focus in AF-S mode, or due to another reason, these are indicated in [Number of failed frame(s)] when interval shooting is finished.

Displaying the [Interval/Timer shooting] Dialog Box

To display the [Interval/Timer shooting] dialog box, select [Expanded shooting] → [Interval/Timer shooting] from the [Tools] menu.



Time Delay

Sets the time (timer) until shooting starts after [Start] is clicked. You can set this from 0 seconds to 12 hours, 0 minutes, and 0 seconds.

Interval

Sets the time interval between shots when [Number of shots] is set to [2] or more (Interval shooting).

You can set this from 0 seconds to 24 hours, 0 minutes, and 0 seconds.



If the interval time is set to a very short time or is set shorter than the exposure time, the actual shooting interval may be longer than the set interval time.

Number of Shots

Sets the number of pictures to be taken. When this is set to [1], the [Interval] setting is disabled and timer shooting can only be performed. You can set this from [1] to [99].

Release All Shutters

Add a check next to [Release all shutters] to have all connected cameras shoot at the same time.



- [Synchronous shooting] is disabled in [Interval/Timer shooting]. When multiple cameras are connected to the computer, only the active camera takes a picture even if [Synchronous shooting] is selected for the desired camera unless a check is next to [Release all shutters].
- When multiple cameras are connected to the computer, [Release all shutters] cannot be applied to only some of the cameras.

This section explains the settings of and how to take pictures with bulb timer shooting.

Bulb Timer Shooting


You can use bulb timer shooting to take multiple pictures at a specified time interval using a long exposure.

There are two bulb timer shooting modes: [With one body] mode for taking pictures with one camera and [With multiple bodies] mode for take pictures with multiple cameras.

With [With one body] mode, you can create a superimposed composite of multiple shot images.

Clicking [Start] on the [With one body] tab starts bulb timer shooting on the selected camera.

Clicking [Start] on the [With multiple bodies] tab simultaneously starts bulb timer shooting on all connected cameras.

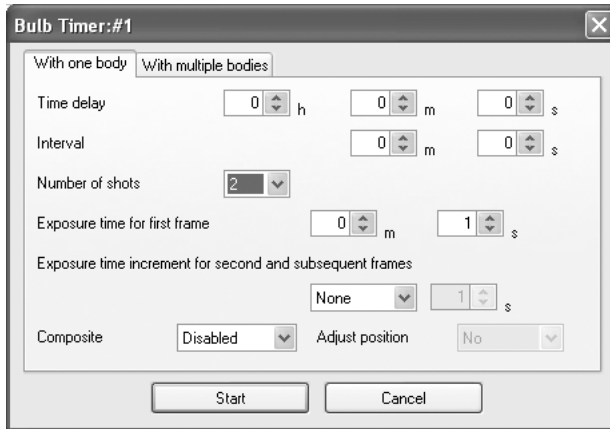
To cancel this operation, click [Cancel] or click  in the upper right corner of the dialog box.



- [Synchronous shooting] is disabled in [With one body] bulb timer shooting. When multiple cameras are connected to the computer, only the active camera takes a picture even if [Synchronous shooting] is selected for the desired camera.
- [With multiple bodies] in bulb timer shooting is applied to all cameras connected to the computer. This cannot be applied to only desired cameras when multiple cameras are connected to the computer.
- To use [With multiple bodies], the exposure mode must be set to **B** (Bulb) for all cameras connected to the computer.

Displaying the [Bulb Timer] Dialog Box

To display the [Bulb timer] dialog box, select [Expanded shooting] and [Bulb timer] from the [Tools] menu.



Time Delay

Sets the time (timer) until shooting starts after [Start] is clicked. You can set this from 0 seconds to 12 hours, 0 minutes, and 0 seconds.

Interval

Sets the time interval between shots when [Number of shots] is set to [2] or more.

You can set this from 0 seconds to 60 minutes and 0 seconds.



When [Noise Reduction] is set to [On] on the [Custom Setting] dialog box, the next picture is not taken until image processing for the current image is finished. For this reason, the actual shooting interval may be longer than the time interval set in [Interval].

Number of Shots

Sets the number of pictures to be taken. When this is set to [1], the [Interval], [Exposure time increment for second and subsequent frames], and [Composite] settings are disabled.

You can set this from [1] to [9].

Exposure Time

Sets [Exposure time for first frame] and [Exposure time increment for second and subsequent frames] in [With one body] mode.

Sets [Exposure time] in [With multiple bodies] mode.

You can set [Exposure time for first frame] and [Exposure time] from 1 second to 60 minutes and 0 seconds.

Exposure Time Increment for Second and Subsequent Frames

Sets the increment for increasing the exposure time for the second and subsequent frames.

None	Pictures are taken with the same exposure time setting.
Equal ratio (x2)	Pictures are taken at twice the previous exposure time.
Equal difference	Pictures are taken at a time equal to the previous exposure time plus a set time.



The maximum exposure time is 60 minutes. Therefore when this is set to [Equal ratio (x2)] or [Equal difference], the exposure time cannot be set to exceed 60 minutes while taking the number of pictures set in [Number of shots].

Composite

Sets whether to create a superimposed composite of shot images.

No	Images are not superimposed.
Add	Superimposes shot images using a method that adds the RGB value of each pixel. The more images that are superimposed, the brighter the composite image becomes.
Average	Superimposes shot images using a method to determine the RGB value of each pixel by dividing the RGB value added to each pixel by [Number of shots]. The composite image has a brightness that is the average of the brightness of each superimposed image.



When [Add] or [Average] is selected, the [Exposure time increment for second and subsequent frames] setting is disabled and the exposure time is fixed to the [Exposure time for first frame] setting.

Alignment

Sets whether to align the composite image when [Add] or [Average] is selected.

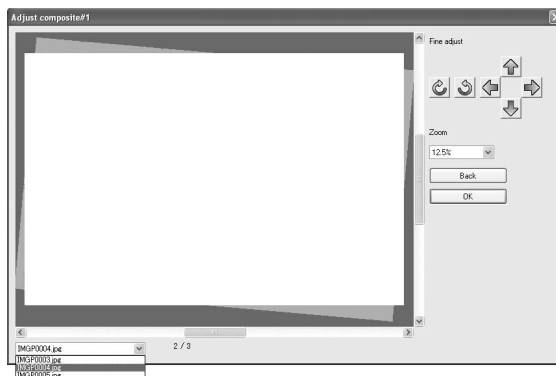
When [Yes] is selected, you can adjust the angle and vertical and horizontal position of each shot image after the first image using the [Adjust composite] dialog box that is displayed after the number of pictures set in [Number of shots] is taken.

Click two points on the preview image to adjust the position. Display the two points on the first image, select another image from the drop-down list on the bottom left of the [Adjust composite] dialog box, use the same procedures and select the two points. The location is automatically adjusted so that the points overlap.

Alternatively, adjust the angle and the horizontal and vertical positions with the buttons on the right of the dialog box.

After adjusting the images, click [OK] to save the composite image as a single image.

(The preview image is displayed.)




[Set-up]/[Date Adjust] Dialog Box

This section explains the settings on the [Set-up] and [Date Adjust] dialog box.

[Set-up] Dialog Box

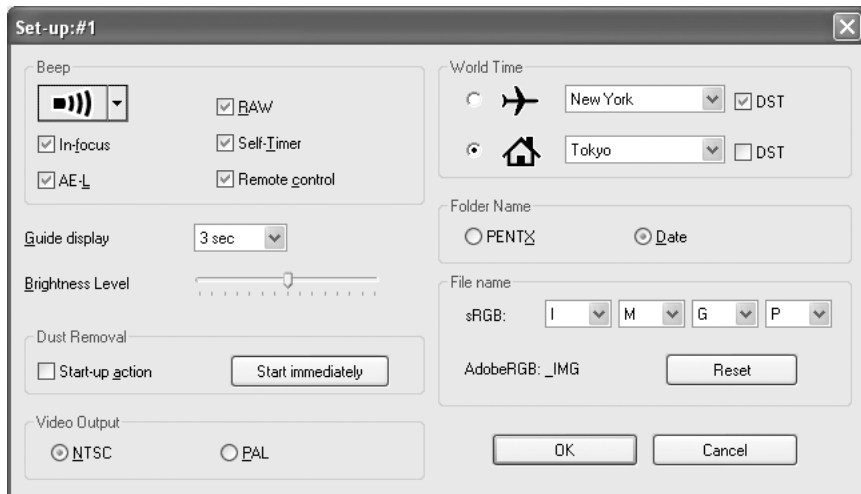
You can use this window to change the Beep, World Time, Guide display, Brightness Level, Video Output, Folder Name, Dust Removal, and File Name settings available on the [Set-up] menu of the camera.

Click [OK] to apply the settings to the camera.

To cancel this operation, click [Cancel] or click  in the upper right corner of the dialog box.

Displaying the [Set-up] Dialog Box

To display the [Set-up] dialog box, select [Set-up] from the [Camera] menu.



Set-up Settings

The [Set-up] dialog box displays the current settings of the camera. Click [OK] to apply the changed settings to the camera.

Beep	Sets whether to turn the operation sounds on or off. To make individual settings, add a check next to the item for which operation sounds are to be used.
World Time	Select the radio button for the desired world time location (→ (Destination) or ↶ (Hometown)). To set daylight saving time, add a check next to [DST].
Guide display	Select the time to display the guide from the drop-down list.
Brightness Level	Adjusts the brightness of the LCD monitor on the camera.
Video Output	Select the radio button for the video output format to activate. On the K20D , the appropriate setting is selected automatically according to the [World Time] setting.
Folder Name	Sets the method for assigning folder names on the camera. Select the radio button for the desired folder name.
Dust Removal	Click [Start immediately] to immediately start Dust Removal. Add a check next to [Start-up action] to perform Dust Removal each time the camera is turned on.
File Name	Specify the first 4 characters of the file name for a picture taken in sRGB mode (available only when the K20D is connected). Select each character from the drop-down list.

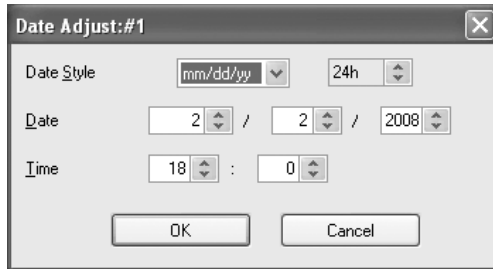


For more information, see the Operating Manual of the camera.

[Date Adjust] Dialog Box

Sets the date on the camera.

To display the [Date Adjust] dialog box, select [Date Adjust] from the [Camera] menu.



Set the date style, date, and time, and then click [OK] to apply the settings to the camera.

To cancel this operation, click [Cancel] or click in the upper right corner of the dialog box.



For more information, see the Operating Manual of the camera.


This section explains the settings on the [USER mode settings] dialog box.

[USER Mode Settings] Dialog Box

You can use this dialog box to change the USER mode settings of the camera as necessary.

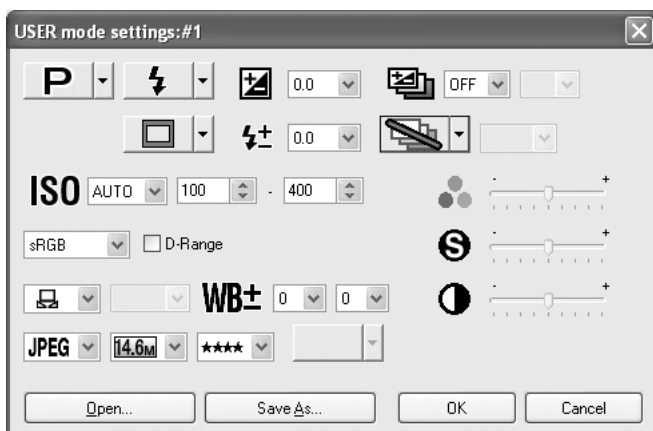
You can also save the settings to the computer and load settings from a saved file.

Click [OK] to apply the settings to the camera.

To cancel this operation, click [Cancel] or click  in the upper right corner of the dialog box.

Displaying the [USER Mode Settings] Dialog Box

To display the [USER mode settings] dialog box, select [USER mode settings] from the [Camera] menu.



USER Mode Settings

The following items can be set in the [USER Mode Settings] dialog box.

USER mode settings			
Exposure Mode	Flash Mode	EV Compensation	Exposure Bracket
Drive Mode	Flash Compensation	Extended Bracket	ISO Sensitivity
Auto Sensitivity Adjustment Range and Expand Dynamic Range	Color Space	White Balance	White Balance Correction
File Format	Recorded Pixels	JPEG Quality	Image Tone
Saturation	Sharpness	Contrast	



- For more information, see the Operating Manual of the camera.
- When the mode dial of the camera is set to **USER**, any settings changed with the [USER mode settings] dialog box are also applied to the [Shooting Conditions] dialog box.
- When the **K20D** is connected, the [Saturation], [Contrast], [Sharpness], and [Hue] settings of the Extended Bracket setting can be set to one of four levels.
- [Expand Dynamic Range] and [Color Space] are deactivated when the **K10D** is connected.
- [Image Tone], [Saturation], [Sharpness], and [Contrast] are deactivated when the **K20D** is connected.

Saving the Settings to the Computer

Click [Save As] to display the [Save As] dialog box.

You can use this dialog box to save the current settings on the [USER mode settings] dialog box to the computer.

Loading a USER Mode Settings File

Click [Open...] to display the [Open] dialog box. Select a USER mode settings file saved on the computer and click [Open...] to apply the saved settings to the [USER mode settings] dialog box.

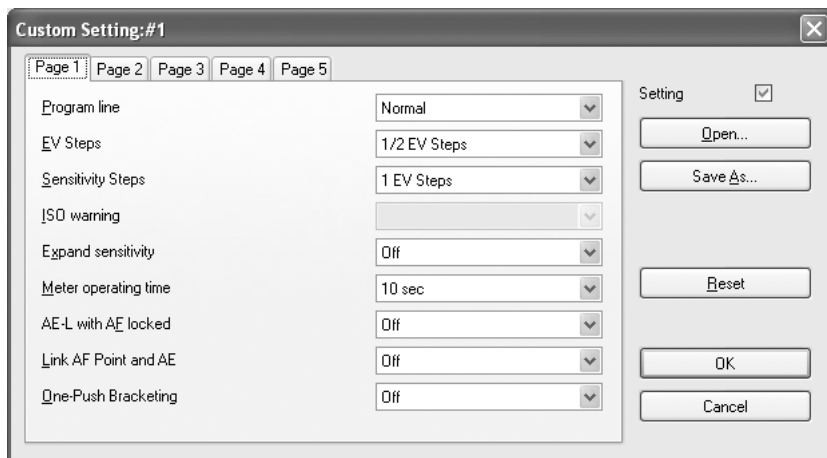
This section explains the settings on the [Custom Setting] dialog box.

[Custom Setting] Dialog Box

You can use this dialog box to check the settings on the [Custom Setting] menu of the camera and change them as necessary. You can also save the settings to the computer and load settings from a saved file.

Displaying the [Custom Setting] Dialog Box

To display the [Custom Setting] dialog box, select [Custom Setting] from the [Camera] menu.



Custom Settings

The [Custom Setting] dialog box displays the current settings of the camera. Click [OK] to apply the changed settings to the camera.

The [Custom Setting] dialog box settings are divided into five tabs labeled [Page 1], [Page 2], [Page 3], [Page 4], and [Page 5].

Page 1	Program line, EV Steps, Sensitivity Steps, ISO warning*, Expand sensitivity**, Meter operating time, AE-L with AF locked, Link AF Point and AE, One-Push Bracketing**
Page 2	Auto Bracketing order, Auto EV Compensation, WB when using flash, Fine tune when AWB*, WB Light Source Fine-Tune**, AF Button Function, AF by Press Halfway, Superimpose AF area, AF in remote control
Page 3	Slow Shutter Speed NR, High-ISO Noise Reduction**, Color space, Color Temperature steps, e-dial in Program, e-dial in Sv mode, e-dial in Tv mode, e-dial in Av mode, e-dial in TAv & M**
Page 4	e-dial in B & X** , Green Button in TAv & M , One-touch RAW+JPEG*, Illuminate LCD panel, Release when charging, Flash in wireless mode, Preview Method, Recordable Image No. *, Display Sensitivity**
Page 5	Initial zoom display*, Auto Image Rotation, Saving rotation info, Catch-in focus**, Using aperture ring




- Items with a single asterisk (*) are disabled when the **K20D** is connected. Items with a double asterisk (**) are available only when the **K20D** is connected.
- For more information, see the Operating Manual of the camera.
- The setting options for each setting item may vary depending on the connected PENTAX camera model.

Changing the Custom Settings

To change a setting, select the setting from the drop-down menu next to that item.

If a setting on the drop-down menu is grayed out and cannot be changed, add a check next to [Setting] to enable the Custom Setting.

Click [OK] to apply the settings to the camera.

To cancel this operation, click [Cancel] or click  in the upper right corner of the window.

Saving the Custom Settings to the Computer

Click [Save As] to display the [Save As] dialog box.

You can use this dialog box to save the current settings on the [Custom Setting] dialog box to the computer.

Loading a Custom Settings File

Click [Open...] to display the [Open] dialog box. Select a Custom Setting set file saved on the computer and click [Open...] to apply the saved settings to the [Custom Setting] dialog box.

Resetting the Custom Settings

To return the custom settings to the default settings, click [Reset].



All settings on the [**C** Custom Setting] menu of the camera are returned to their default settings.


[Measure Manual White Balance] Dialog Box

This section explains the settings on the [Measure manual white balance] dialog box.

[Measure Manual White Balance] Dialog Box

The Measure manual white balance function sets the color standard by measuring the white color at a desired location according to the lighting conditions for shooting.

You can use the [Measure manual white balance] dialog box to measure the manual white balance on the computer.

To close the [Measure manual white balance] dialog box, click [Close] or click  in the upper right corner of the dialog box.

Displaying the [Measure Manual White Balance] Dialog Box

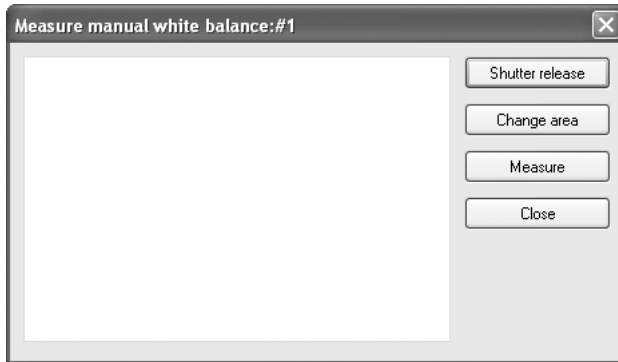
To display the [Measure manual white balance] dialog box, select [Measure manual white balance] from the [Camera] menu.



Shutter Release

Under the light to adjust the white balance, fully display a white sheet of paper in the viewfinder or select a white area as the subject.

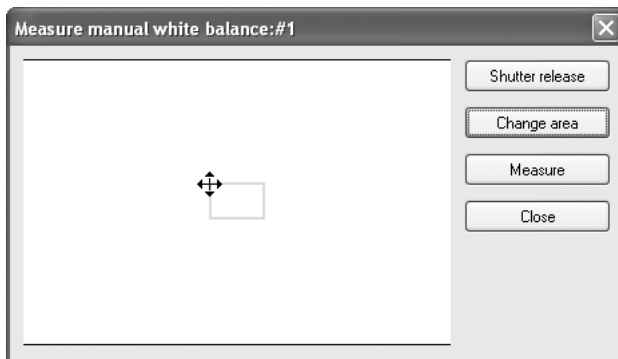
Click [Shutter release] to display the viewfinder image in the [Measure manual white balance] dialog box.



[Change Area]

Click [Change area] to set the measurement area to full measurement or spot measurement.

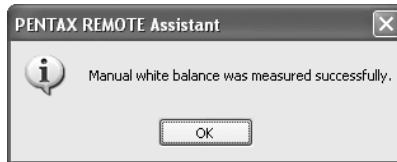
When spot measurement is selected, specify the measurement area by dragging with the mouse or specifying with the cursor keys.



[Measure]

After determining the measurement area, click [Measure] to measure the white balance.

If [Manual white balance was measured successfully.] is displayed, the white balance setting is applied to the camera.



If the manual white balance setting fails, [Failed to measure manual white balance.] is displayed, change the measurement area or subject and try measuring the white balance again.

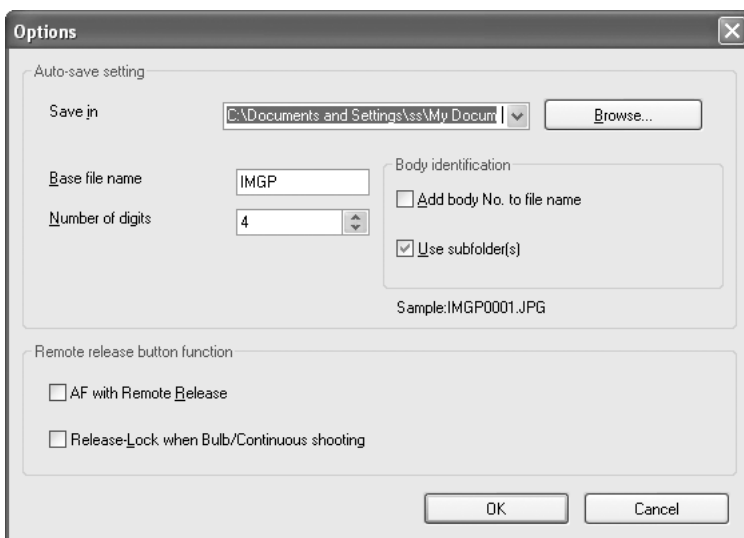
This section explains the settings on the [Options] dialog box.

[Options] Dialog Box

You can use the [Options] dialog box to set the image file save settings in auto save mode and the function setting for the remote shutter release button on the main window.

Displaying the [Options] Dialog Box

To display the [Options] dialog box, select [Options] from the [Tools] menu.



Auto-Save Setting

Sets the settings for the image file destination and file naming conventions in auto save mode.

Setting the Destination

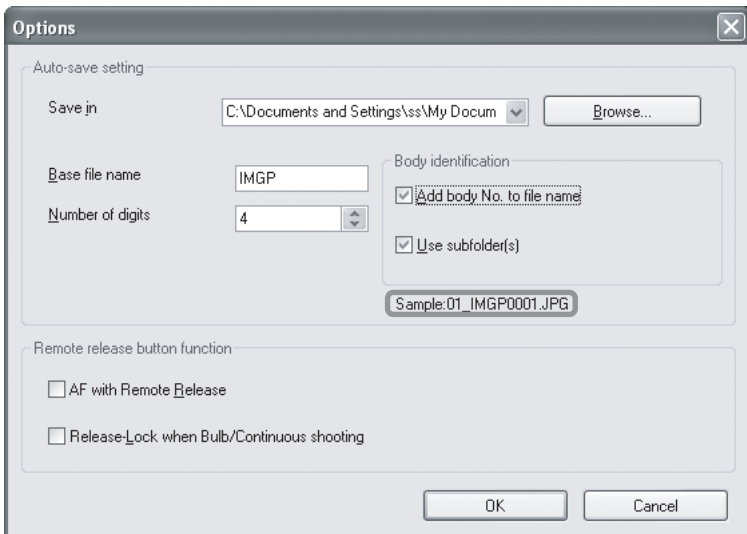
Click [Browse] to display the directory tree of the computer, and then select the destination folder. You can also create a new folder.

Setting the File Naming Conventions

In auto save mode, captured images are saved using the sequential number file name based on the settings below.

Base file name	Sets the character string that is used as the base of the file name. Enter a character string.
Number of digits	Sets the number of digits in the file name.
Add body No. to file name	Add a check next to this item to add a two-digit body number to the beginning of the file name.
Use subfolder(s)	Add a check next to this item to save images by the camera, by creating subfolders labeled with the camera body number in the destination folder.

The current setting is displayed in [Sample:] below.



The file name format is as follows.

01_ABCD0001.JPG

01_	ABCD	0001	.JPG
Body number	Base file name	Sequential number	Extension

Remote Release Button Function

Sets the function of the remote shutter release button on the main window (and [Shutter release] on the [Camera] menu). (p.16)

AF with Remote Release	Add a check next to this item to take pictures with autofocus when you click the remote shutter release button (or select [Shutter release] from the [Camera] menu).
Release-Lock when Bulb/Continuous shooting	Add a check next to this item to start taking pictures when you click the remote shutter release button once (or select [Shutter release] from the [Camera] menu). Click (or select [Shutter release]) again to stop taking pictures. During Bulb/Continuous shooting, with a single click of the mouse, you can continue taking pictures as if you are continuously pressing the shutter release button fully.

Display Messages

This section explains the messages that are displayed during operation of the PENTAX REMOTE Assistant.

Display Message	Description
The same body number already exists. A temporary number will be set and the body number dialog box will be displayed.	This is displayed when a camera has a body number that already exists at start-up or when connected to the computer. Click [OK] to display the [Set body number] dialog box and change the body number.
Unable to focus. The picture was not taken.	This is displayed when the autofocus mode on the camera is set to AF.S and the camera is unable to focus and the shutter cannot be released. Select [AF execution] to enable the camera to focus on the subject or manually focus on the subject, and then activate the remote shutter release again.
The built-in flash is not fully charged. The shutter cannot be released.	This is displayed during continuous shooting or interval shooting when the shutter cannot be released because the built-in flash is still charging. Set [Release when charging] to [On] on the [Custom Setting] window, or provide ample time for the flash to charge.
The shutter cannot be released.	This is displayed when the shutter cannot be released due to a reason other than the camera is unable to focus or the flash is not fully charged. Check the settings on the camera and the PENTAX REMOTE Assistant.
Camera #XX was disconnected.	This is displayed when a connected camera loses its connection. Check the USB cable and camera power.
The camera buffer memory will be cleared. OK?	This is displayed in Buffer select mode when you try to select a different save mode with images remaining in the buffer memory of the camera. Click [OK] to clear the buffer memory of the camera and delete the images.
The specified camera buffer image will be cleared. OK?	This is displayed in Buffer select mode when you try to delete the selected images. Click [OK] to clear the buffer memory of the camera and delete the images.
Manual white balance was measured successfully.	This is displayed when the manual white balance is measured successfully.

Display Message	Description
Failed to measure manual white balance.	This is displayed when measurement of the manual white balance fails. Click [OK] and try measuring the manual white balance again.
Camera #XX will be disconnected. OK?	This is displayed when you select [Disconnect] or try to close the main window. To disconnect the camera, click [OK].

Memo

Memo

- PENTAX Corporation** 2-36-9, Maeno-cho, Itabashi-ku, Tokyo 174-8639, JAPAN
(<http://www.pentax.co.jp/>)
- PENTAX Europe GmbH
(European Headquarters)** Julius-Vosseler-Strasse, 104, 22527 Hamburg,
GERMANY
(HQ - <http://www.pentaxeurope.com>)
(Germany - <http://www.pentax.de>)
- PENTAX U.K. Limited** PENTAX House, Heron Drive, Langley, Slough, Berks
SL3 8PN, U.K.
(<http://www.pentax.co.uk>)
- PENTAX France S.A.S.** 112 Quai de Bezons, B.P. 204
95106 Argenteuil Cedex, FRANCE
(<http://www.pentax.fr>)
- PENTAX Italia S.r.l.** Via Dione Cassio 15, 20138 Milano, ITALY
(<http://www.pentaxitalia.it>)
- PENTAX (Schweiz) AG** Widenholzstrasse 1, 8304 Wallisellen Postfach 367,
8305 Dietlikon, SWITZERLAND
(<http://www.pentax.ch>)
- PENTAX Scandinavia AB** P.O. Box 650, 75127 Uppsala, SWEDEN
(<http://www.pentax.se>)
- PENTAX Imaging Company**
A Division of PENTAX of America, Inc.
(Headquarters)
600 12th Street, Suite 300 Golden, Colorado 80401, U.S.A.
(PENTAX Service Department)
12000 Zuni Street, Suite 100B
Westminster, Colorado 80234,
U.S.A. (<http://www.pentaximaging.com>)
- PENTAX Canada Inc.** 1770 Argentia Road Mississauga, Ontario L5N 3S7,
CANADA
(<http://www.pentax.ca>)
- PENTAX Trading
(SHANGHAI) Limited** 23D, Jun Yao International Plaza, 789 Zhaojiabang Road,
Xu Hui District, Shanghai, 200032 China



for your
preclous moments

<http://www.pentax.co.jp/english>

- Specifications and external dimensions are subject to change without notice.

Free Manuals Download Website

<http://myh66.com>

<http://usermanuals.us>

<http://www.somanuals.com>

<http://www.4manuals.cc>

<http://www.manual-lib.com>

<http://www.404manual.com>

<http://www.luxmanual.com>

<http://aubethermostatmanual.com>

Golf course search by state

<http://golfingnear.com>

Email search by domain

<http://emailbydomain.com>

Auto manuals search

<http://auto.somanuals.com>

TV manuals search

<http://tv.somanuals.com>