

OLYMPUS

VOICE RECORDER NOTE CORDER DP-201

EN INSTRUCTIONS

Thank you for purchasing an Olympus Digital Voice Recorder. Please read these instructions for information about using the product correctly and safely. Keep the instructions handy for future reference.

To ensure successful recordings, we recommend that you test the record function and volume before use.

OLYMPUS IMAGING CORP.

Shinjuku Monolith, 3-1 Nishi-Shinjuku 2-chome, Shinjuku-ku, Tokyo 163-0914, Japan.
Tel. +81 (0)3-3340-2111

<http://www.olympus.com>

OLYMPUS IMAGING AMERICA INC.

3500 Corporate Parkway, P.O. Box 610, Center Valley, PA 18034-0610, U.S.A.
Tel. 1-888-553-4448

<http://www.olympusamerica.com>

For customers in North and South America

USA RFI:

This equipment has been tested and found to comply with the limits for a Class B digital device, pursuant to part 15 of the FCC Rules. These limits are designed to provide reasonable protection against harmful interference in a residential installation. This equipment generates, uses and can radiate radio frequency energy and, if not installed and used in accordance with the instructions, may cause harmful interference to radio communications. However, there is no guarantee that interference will not occur in a particular installation. If this equipment does cause harmful interference to radio or television reception, which can be determined by turning the equipment off and on, the user is encouraged to try to correct the interference by one or more of the following measures:

- Reorient or relocate the receiving antenna.
- Increase the separation between the equipment and receiver.
- Connect the equipment into an outlet on a circuit different from that to which the receiver is connected.
- Consult the dealer or an experienced radio/TV technician for help.

Canadian RFI:

This digital apparatus does not exceed the Class B limits for radio noise emissions from digital apparatus as set out in the Radio Interference Regulations of the Canadian Department of Communications. Cet appareil numérique ne dépasse pas les limites de Catégorie B pour les émissions de bruit radio émanant d'appareils numériques, tel que prévu dans les Règlements sur l'Interférence Radio du Département Canadien des Communications.

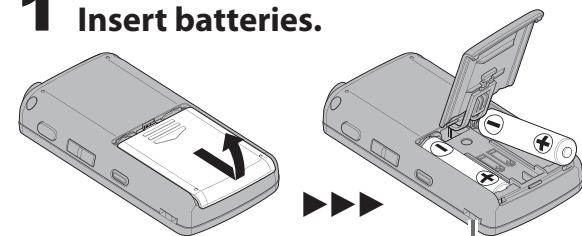
Introduction

- The contents of this document may be changed in the future without advanced notice. Contact our Customer Support Center for the latest information relating to product names and model numbers.
- The screen and recorder illustrations shown in this manual were produced during the development stages and may differ from the actual product. The utmost care has been taken to ensure the integrity of the contents of this document. In the unlikely event that a questionable item, error, or omission is found, please contact our Customer Support Center.
- Any liability for passive damages or damage of any kind occurred due to data loss incurred by a defect of the product, repair performed by the third party other than Olympus or an Olympus authorized service station, or any other reason is excluded.

U1-BS0952-01
TR1111

Getting started

1 Insert batteries.



Strap eyelet
• A strap is not supplied with this product.

Battery indicator:

If [] is displayed on the screen, replace batteries as soon as possible. If the battery level becomes too low, [] and [Battery Low] are displayed and then the recorder automatically turns off.

2 Turn on the power.

Slide the **POWER** switch to **ON**.

• Be sure to remove the protective film on the display before using this product.

To turn off the power:

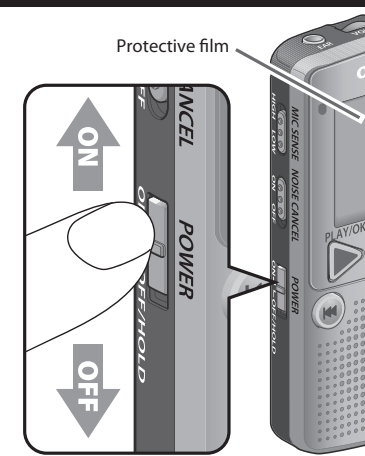
While the recorder is in the stop mode, slide the **POWER** switch to **OFF/HOLD**.

Power save mode:

If no operations are performed for more than 10 minutes when the power is on, the display automatically turns off and the recorder enters the power save mode. To exit the power save mode, press any button.

HOLD:

If sliding the **POWER** switch to **OFF/HOLD** while the recorder is in operation, all buttons and switches are disabled without interrupting the current operations.

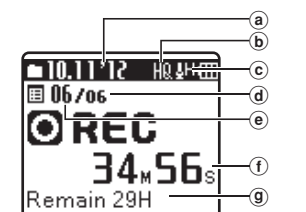
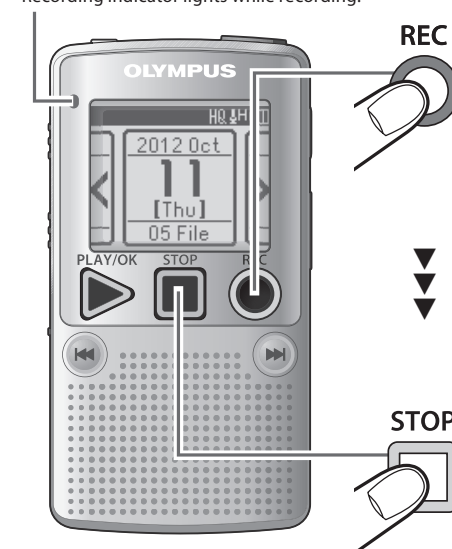


Set the time and date. "Setting time and date" (Verso)

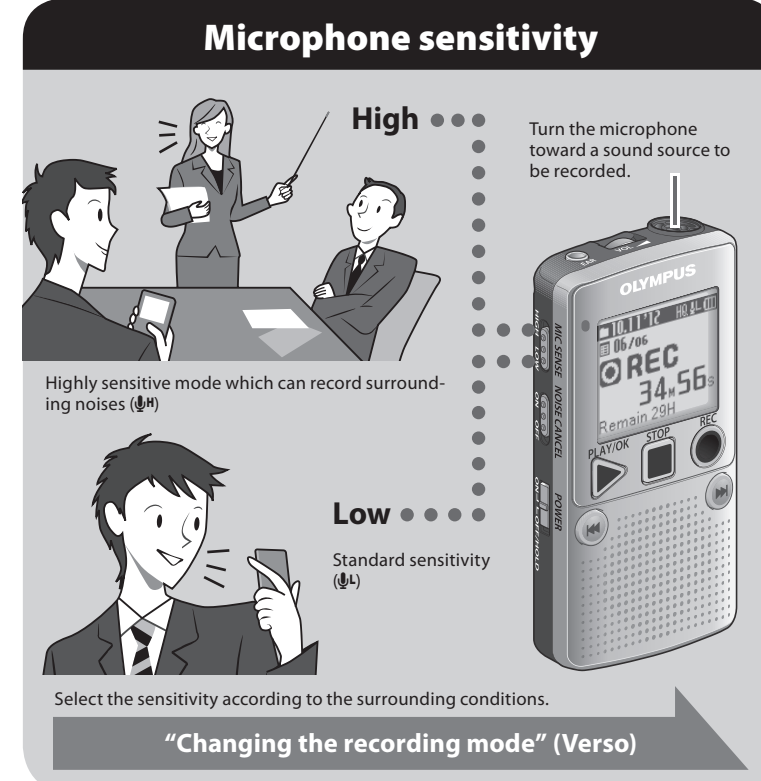
- The [Set Time & Date] screen appears when you use the recorder for the first time or when the recorder is turned on after more than 30 minutes without power supply.
- If the time and date are not set, the time and date of the default settings are recorded to files.

Recording

Recording indicator lights while recording.



- a Current date
- b Recording mode indicator
- c Microphone sensitivity indicator
- d Total number of recorded files for the date
- e Current file number
- f Elapsed recording time
- g Remaining recording time

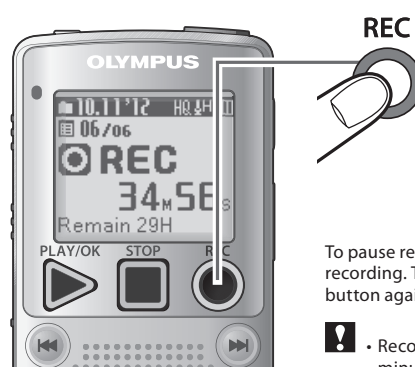


Select the sensitivity according to the surrounding conditions.

"Changing the recording mode" (Verso)

- To ensure successful recordings, we recommend you to test recording with the selected functions and volume beforehand.
- To ensure recording from the beginning, start recording a sound source after the recording indicator lights.
- The recorder cannot record if [Memory Full] or [Maximum File Size is reached] is displayed. Delete unnecessary files to free up some space in memory.
- If the recorder is placed directly on a table, the vibrations of the table are likely to be recorded. To record sound clearly, place a notebook or handkerchief between the recorder and the table to prevent the vibrations from being recorded.
- When the available recording time becomes less than 60 seconds, the recording indicator starts flashing. The indicator flashes faster if the available time decreases to 30 seconds and to 10 seconds.

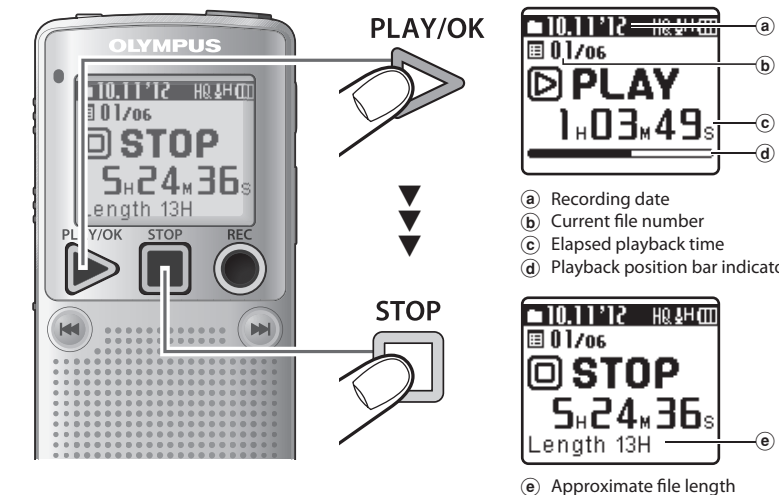
Pause



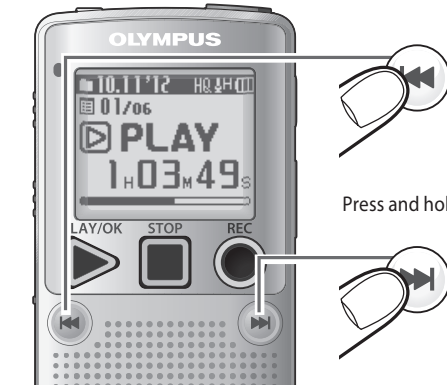
To pause recording, press the **REC** (O) button while recording. To resume the recording, press the **REC** (O) button again.

- Recording is automatically stopped if 60 minutes elapsed after recording is paused.

Playback

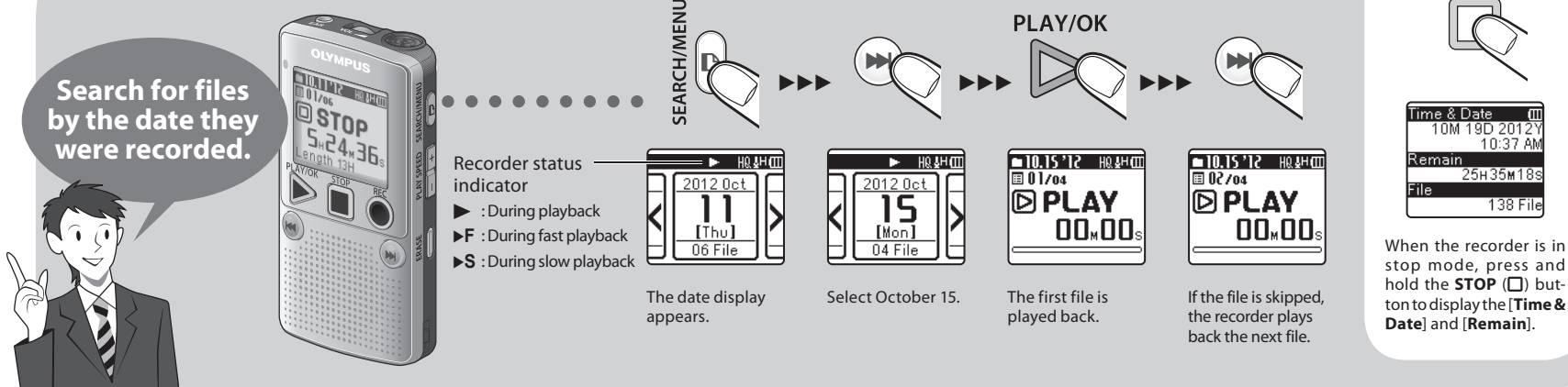


Forwarding and Rewinding



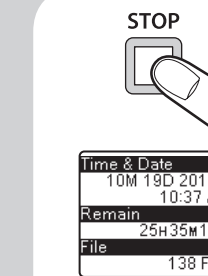
- To fast-forward or rewind a file, press and hold **FF** or **REW** button while playing back a file.
- To skip to the next file or previous file, press **FF** or **REW** button.
- Fast-forwarding or rewinding continues to the next file.

File search



• When searching for a file recorded on October 15.

- ▶ During playback
- ▶ During fast playback
- ▶ During slow playback



When the recorder is in stop mode, press and hold the **STOP** (O) button to display the [Time & Date] and [Remain].

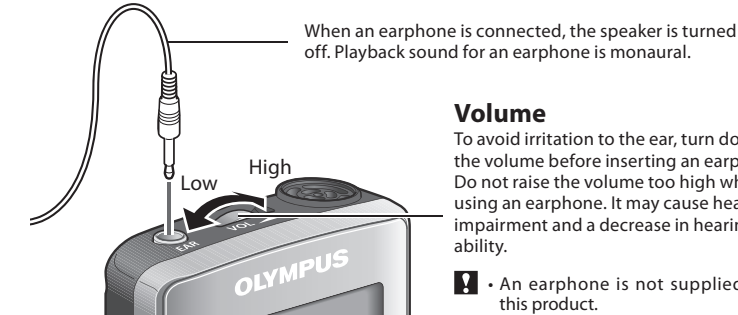
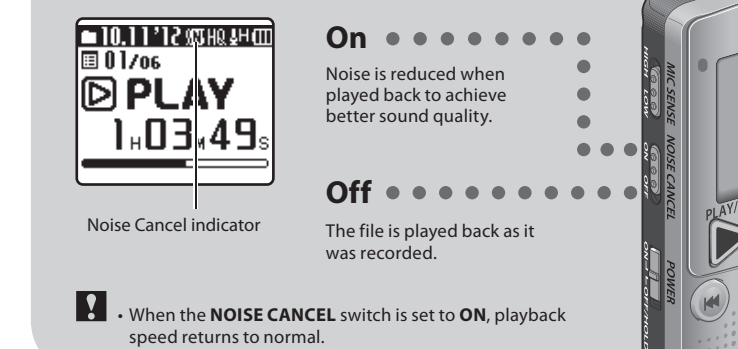


Changing the playback speed

- **Fast**
Playback speed is changed between 0.5x, 0.75x, normal, 1.2x, 1.5x, and 2.0x by each press of the buttons.
- **Slow**



Noise cancel



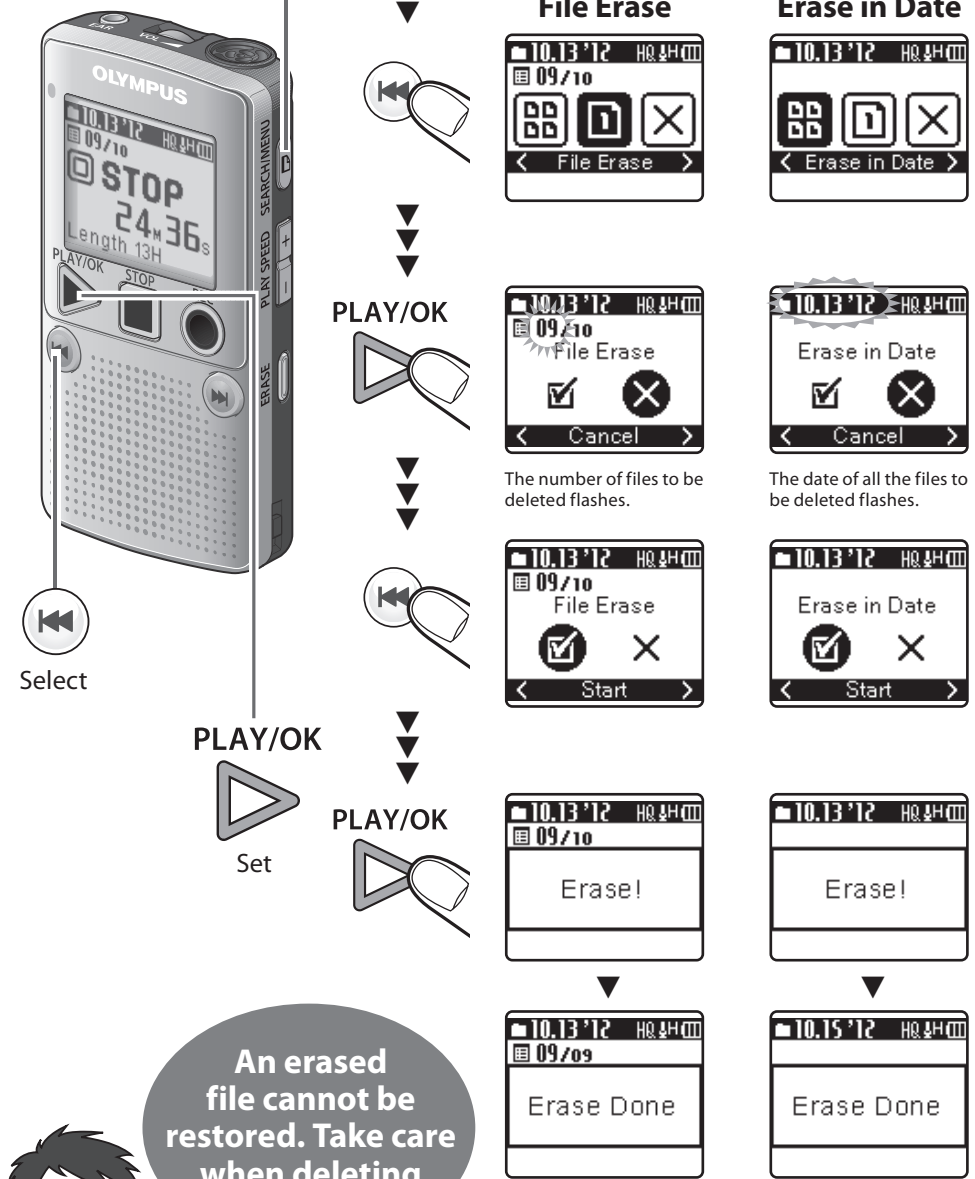
Volume
To avoid irritation to the ear, turn down the volume before inserting an earphone. Do not raise the volume too high when using an earphone. It may cause hearing impairment and a decrease in hearing ability.

- An earphone is not supplied with this product.

Erase

Select the file you want to delete and stop playback beforehand.

To delete all files recorded on a specific date, press the **SEARCH/MENU** button to switch to the date display.



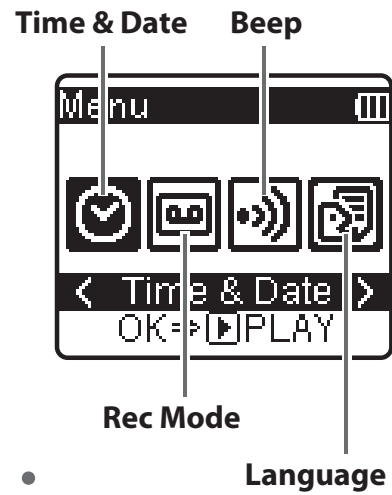
An erased file cannot be restored. Take care when deleting files.

- If no operations are performed for 8 seconds, the recorder returns to the stop mode.
- It may take for more than 10 seconds to complete the processing. Do not remove batteries while processing. The data may be corrupted. Check the battery level beforehand to ensure that the batteries do not run out while processing.

1 Press **SEARCH/MENU** for more than 1 second.



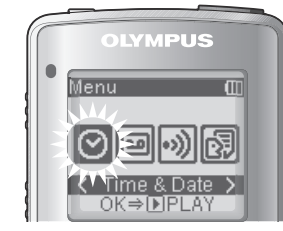
2 Press **◀▶** or **▶▶** to highlight the item you want to set.



3 Confirm the selection.



Setting time and date



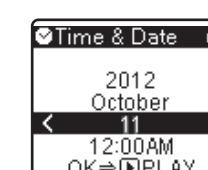
PLAY/OK



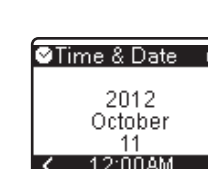
PLAY/OK



PLAY/OK



PLAY/OK



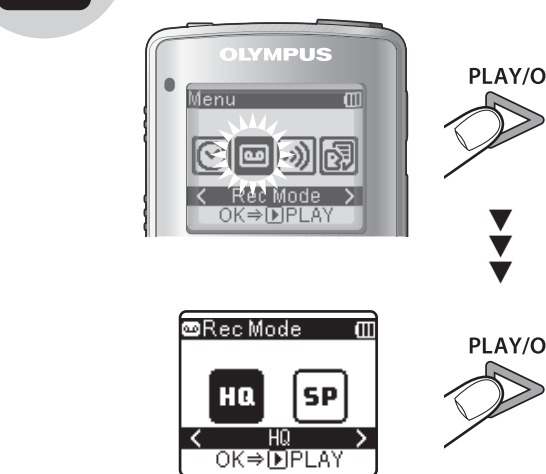
PLAY/OK

File management will be easier by setting the time and date.



- Press **◀▶** or **▶▶** to set a date.
- The clock will start from the set date and time. Press the **PLAY/OK** button according to the time signal.
 - Check the time and date settings before using the product again if it is left unused for long periods of time.

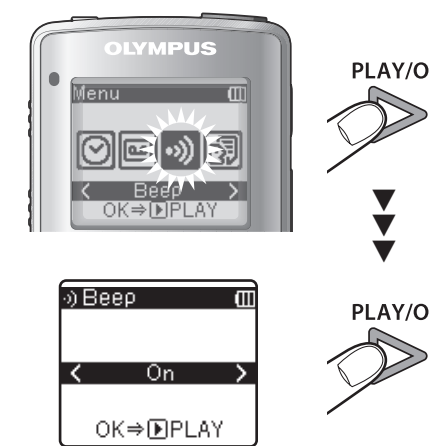
Changing the recording mode



Use the **◀▶** and **▶▶** buttons to switch recording modes.

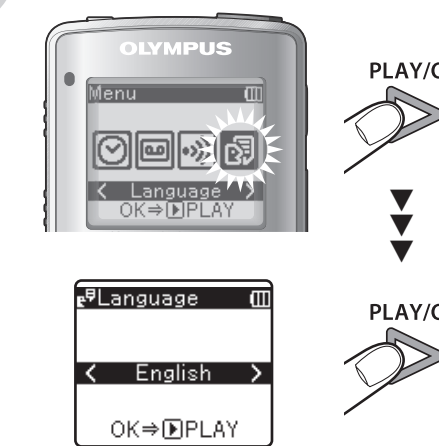
Recording condition	Recommended settings	
	Rec Mode	MIC SENSE
Dictation with a lot of background noise.	[HQ] (high quality sound recording)	[LOW]
Recordings for lessons and meetings.	[HQ] (high quality sound recording)	[HIGH]
Lengthy recordings.	[SP] (standard recording)	[HIGH]

Turning the beep On/Off



Use the **◀▶** and **▶▶** buttons to turn the operating sound On/Off.

Changing the display language



Use the **◀▶** and **▶▶** buttons to select the display language.

Safe and proper usage

General precautions

- Do not leave the recorder in hot, humid locations such as inside a closed automobile under direct sunlight or on the beach in the summer.
- Do not store the recorder in places exposed to excessive moisture or dust.
- Do not use organic solvents such as alcohol and lacquer thinner to clean the unit.
- Do not place the recorder on top of or near electric appliances such as TVs or refrigerators.
- Avoid recording or playing back near cellular phones or other wireless equipment, as they may cause interference and noise. If you experience noise, move to another place, or move the recorder further away from such equipment.
- Avoid sand or dirt. These can cause irreparable damage.
- Avoid strong vibrations or shocks.
- Do not disassemble, repair or modify the unit yourself.
- Do not operate the unit while operating a vehicle (such as a bicycle, motorcycle, or go-cart).
- Keep the unit out of the reach of children.

<Warning regarding data loss>

- Recorded content in memory may be destroyed or erased by operating mistakes, unit malfunction, or during repair work.
- For important recorded content, we recommend you to write it down some where.
- Any liability for passive damages or damage of any kind occurred due to data loss incurred by a defect of the product, repair performed by the third party other than Olympus or an Olympus authorized service station, or any other reasons is excluded from Olympus's liability.

Batteries

- **Danger:** Batteries should never be exposed to flame, heat, short-circuited or disassembled.
- Never store batteries where they will be exposed to direct sunlight, or subjected to high temperatures in a hot vehicle, near a heat source, etc.
- **Warning:** Do not solder lead wires or terminals directly onto a battery or modify it.
- Do not connect the \oplus and \ominus terminals together. This may cause fire, overheating or electric shock.
- When carrying or storing the batteries, be sure to put them in the provided case to protect their terminals. Do not carry or store the batteries with any metal objects (such as key rings). If this warning is not followed, fire, overheating or electric shock may occur.
- Do not insert the batteries with their \oplus and \ominus terminals reversed.
- If any liquid from a battery gets into your eyes, promptly wash it off with clean water and consult your doctor at once.
- Do not attempt to recharge alkaline, lithium or any other non-rechargeable batteries.
- Never use any batteries with a torn or cracked outer cover.
- Keep batteries out of the reach of children.
- If you notice anything unusual when using this product such as abnormal noise, heat, smoke, or a burning odor:
 - ① remove the batteries immediately while being careful not to burn yourself, and;
 - ② call your dealer or local Olympus representative for service.
- Do not expose the batteries to water. Do not allow water to contact the terminals.
- Do not remove or damage the batteries insulating sheet.
- Do not use the batteries if you find something wrong with them such as leakage, color change or deformity.
- Unplug the charger if the charging is still incomplete after the specified time it should take.
- Should any batteries liquid get on skin or clothing, promptly wash it off with clean water.
- Keep batteries away from fire.

Caution:

- Do not subject batteries to strong shocks.
- When using rechargeable batteries that have not been used for a while, be sure to recharge them before use.
- Rechargeable batteries have a limited lifetime. When the operating time becomes shorter even if the rechargeable battery is fully charged under the specified condition, replace it with a new one.

Troubleshooting

- Q1:** The power cannot be turned on.
- A1:**
- Batteries are exhausted.
 - Batteries are inserted incorrectly. Check \oplus and \ominus before inserting new batteries.
 - Terminals are soiled. Clean them with a dry cloth.
- Q2:** Nothing happens when a button is pressed.
- A2:**
- The **POWER** switch is set to **[OFF/HOLD]** position. Slide the **POWER** switch to the **[ON]** position.
- Q3:** No sound or quiet sound is heard from the speaker while playing back.
- A3:** The earphone plug is plugged into the recorder. The volume is set to the low level.
- Q4:** Recording is not possible.
- A4:** By pressing the **REC** button:
- Check if the display shows **[Memory Full]**.
 - Check if the display shows **[Maximum File Size is reached]**.
- Delete unnecessary files before recording. A maximum of 99 files can be recorded in a day.
- Q5:** The playback speed is too fast (slow).
- A5:** The recorder is set to fast (slow) Playback. Use the **PLAY SPEED** button to set to normal playback.

Specifications

- Recording medium:** Built-in flash memory (2GB)
- Overall frequency:** HQ mode: 70 to 7,900 Hz
SP mode: 70 to 4,700 Hz
- Guide to recording times:** HQ mode: Approx. 98 h.
SP mode: Approx. 202 h.
- Microphone:** Electret Condenser Microphone (monaural)
- Speaker:** Built-in ϕ 36 mm round dynamic speaker
- Maximum power:** 180 mW
- Earphone jack (monaural):**
 ϕ 3.5 mm diameter, impedance 8 Ω or more
- Power supply:**
Two AAA (LR03) batteries
- Continuous battery:** Guide to alkaline battery life
- | Recording mode | HQ | SP |
|--|---------------|---------------|
| During recording mode | approx. 67 h. | approx. 80 h. |
| During playback mode (Built-in speakers) | approx. 21 h. | approx. 21 h. |
| During playback mode (Earphone) | approx. 45 h. | approx. 49 h. |

Dimensions: 95 (L) mm x 50 (W) mm x 18.2 (T) mm (without protrusions)

Weight: 78 g (including battery)

Operating temperature: 0°C - 42°C

- Battery life is measured by Olympus. It varies greatly according to the type of batteries used and the conditions of use.
- Your recorded contents are for your personal use or pleasure only. It is prohibited to record copyrighted material without permission of the copyright holders according to copyright law.
- Specifications and design are subject to change without notice for improvement of performance.

Free Manuals Download Website

<http://myh66.com>

<http://usermanuals.us>

<http://www.somanuals.com>

<http://www.4manuals.cc>

<http://www.manual-lib.com>

<http://www.404manual.com>

<http://www.luxmanual.com>

<http://aubethermostatmanual.com>

Golf course search by state

<http://golfingnear.com>

Email search by domain

<http://emailbydomain.com>

Auto manuals search

<http://auto.somanuals.com>

TV manuals search

<http://tv.somanuals.com>