

XT•350 & XT•100 MOTORIZED TURNTABLES

MANUAL

The information in this manual is furnished for information use only, is subject to change without notice, and not be construed as a commitment by Anything3D Corp. Anything3D Corp assumes no responsibility or liability for any errors or inaccuracies that may appear in this book.

© 2000-2001 Anything3D Corp. All right reserved.

Download from [Www.Somanuals.com](http://www.Somanuals.com). All Manuals Search And Download.

CONTENS

1. Safety instructions	2
2. Introduction	6
3. Complete set of equipment	10
4. Description	12
5. Installation	14
6. Operating controls	16
7. Preparing for photography	21
7.1 Connecting the Turntable	21
7.2. Starting the Turntable	27
8. Operating modes	29
9. Rotation speed adjustment mode	33
10. Manual mode	37
11. Slave mode	40
12. Optional auto mode	43
13. Frequently asked questions	46
14. Recommendations for use	48
15. Trouble-shooting	53
16. Maintenance	55
17. Specification	57
18. Product warranty	59

NIKON is a registered trademark of Nikon Corporation.

Anything3D and Anything3D logo are registered trademarks of Anything3D Corporation.

Photo3D and Photo3D logo are registered trademarks of Anything3D Corporation.

MS Windows is a registered trademark of Microsoft Corporation.

1. SAFETY INSTRUCTIONS

1. Please, carefully read these instructions.
2. The turntable must be installed on a flat horizontal surface, otherwise it won't work properly.



Figure 1.1

3. Use AC power source indicated in the specification ONLY.



Figure 1.2

4. Turn on the equipment only via properly earthed sockets.
5. Never use a damaged power cable.
6. When using an extension piece, make sure that the total current value doesn't exceed the permissible one.

7. The total current consumed by all devices through the common outlet should not exceed its rated current.
8. Always turn off the turntable if the power cable or socket is damaged, if liquid has got inside the turntable or if the turntable works improperly.

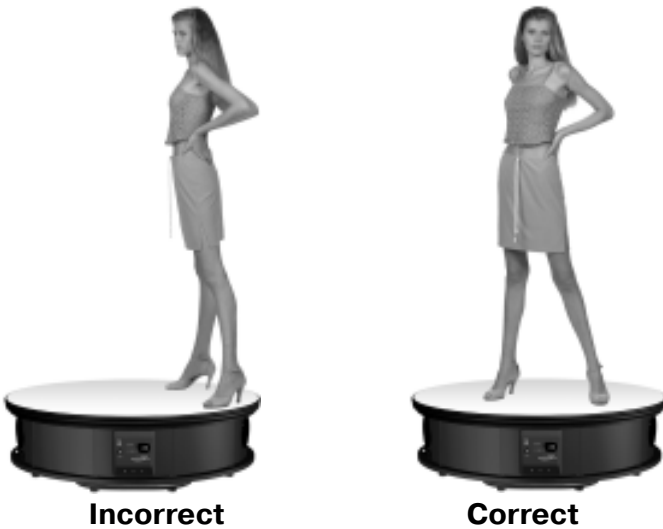


Figure 1.3

9. After switching the turntable off DO NOT switch it on again before 2 seconds have elapsed.
10. Always switch off your turntable by using the button on the power panel.
11. Never take the plug out of the socket before the indicators on the control panel go off.
12. Before cleaning the table disconnect it from the power source.
13. Never use volatile flammable liquids to clean the turntable.

- 14. DO NOT perform maintenance and repair of the turntable yourself. In case of any trouble contact ANYTHING3D.
- 15. Make sure that during rotation the turntable spinning surface doesn't contact with the external objects.
- 16. See to it that the load on the turntable is as close to the center as possible or else it might cause damage to the turntable. (Fig. 1.4)

Figure 1.4



- 17. Never place the photographed objects on the turntable while it is spinning.

[to contents](#)

2. INTRODUCTION

ANYTHING3D XT-100 AND XT-350 MOTORIZED TURNTABLES are intended for automation of 3D photography process. With 3D photography the objects you are taking pictures of can be seen on the computer screen and you can get the complete visual information about all their features! Our turntable lets you get the 3D images series of any object you choose. This widely adaptable kind of 3D images is in great demand. They could be used in Internet-shops, on the model agencies sites, at the advertising shows, presentations, etc.

XT-350 model 39" in diameter is intended for making the photos of people and large objects. XT-350 turntable is capable of bearing the heavy objects with a weight of up to 350 lb.

XT-100 model is 20" in diameter and bears the objects with a weight of up to 100 lb.

XT-350 and XT-100 turntables have the same indication, controls and functional abilities. In addition to the common function abilities XT-350 turntable is equipped with a frame number sound indication, as well as with a pull-out handle and wheels to move the turntable around your photo studio.

The turntable enables a series consisting of different quantities of images (32, 16 or 8 frames). You may take any number of frames depending on your quality and technical requirements. A series of 32 frames produces a



high-quality 3D photo with a bigger file size. A series of 8 frames gives the smallest file size and requires the least time to be loaded through the Internet. A series of 16 frames is a compromise between quality and file size.

ANYTHING3D XT-100 AND XT-350 MOTORIZED TURNTABLES render 3D photography as simple as 1,2,3! You may take pictures in manual, semi-automatic or automatic modes. The enhanced indicating system gives you complete control over the process of photography. Due to its adjustment system the turntable is well adaptable to the various photo studio equipment and cameras.

The best results will be attained by means of using a modern digital camera and a set of the studio lighting equipment as in this case you make the best of all the turntable appliances for automatic photography in order to compile a 3D series.

The original Anything3D software included in the complete set offers a wide variety of 3D series processing options and their further usage.



[to contents](#)

3. COMPLETE SET OF EQUIPMENT

1. Turntable (XT-350 or XT-100)

Figure 3.1



XT-350



XT-100

2. Power cable

Figure 3.2



3. Remote control

Figure 3.3



4. Turntable sync cable (intended for connection to the studio flash sync terminal through the splitter)

Figure 3.4



5. Splitter (for connection to the studio flash sync terminal)

Figure 3.5



6. 2 colored covers for the turntable rotating surface

Figure 3.6



7. Manuals

8. Software CD

4. DESCRIPTION

The upper part of a turntable is a rotating disk (Fig. 4.1a) on which the photographed object is arranged. The disk can rotate in any direction (both clockwise and counter-clockwise).

Arranged on the turntable body are the control panel (Fig. 4.1b, Fig.4.3c) and power panel (Fig. 4.2a, Fig.4.4a).

Fixed on the turntable bottom are the adjustable legs (Fig. 4.1c, Fig. 4.4c) designed for adjusting the level of the turntable.

In addition the turntable model XT-350 is supplied with the sound control panel (Fig. 4.3a), pullout handle (Fig. 4.3b) and two small wheels (Fig. 4.4b) used to move the turntable around.

Figure 4.1

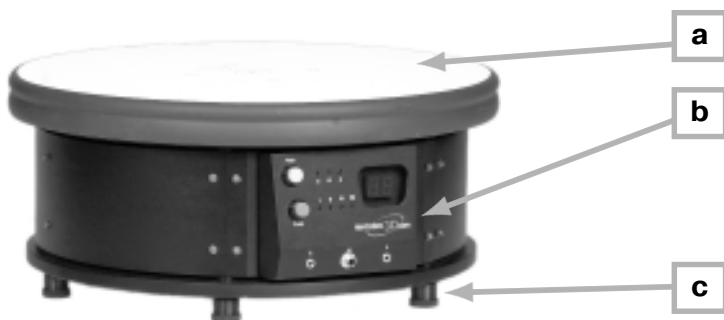


Figure 4.2



Figure 4.3

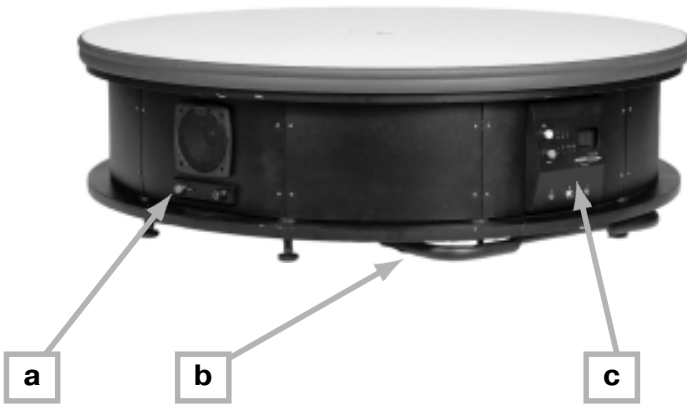
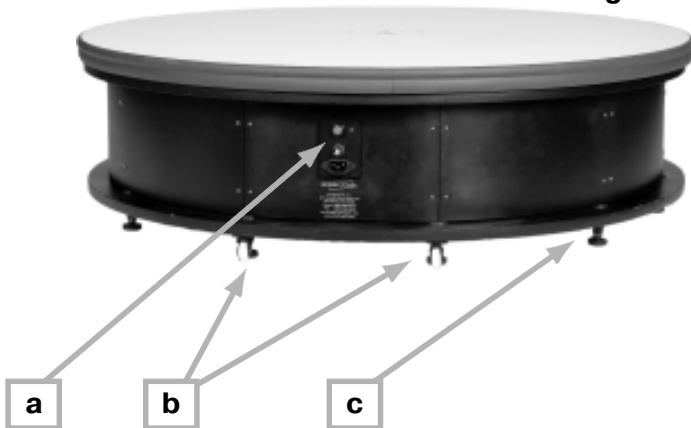


Figure 4.4



[to contents](#)

5. INSTALLATION

Prior to photography locate the turntable on a flat, horizontal and steady surface in your photo studio or any other photography site at your option in order to get the most efficient position for photography. Avoid unstable or vibrating places. Arrange the turntable so that its control panel faces the camera.

For the XT-350 turntable to be easily moved about your photo studio it is supplied with a handle and 2 small wheels. To move the turntable pull out the handle located on its bottom (Fig. 5.1) against the stop; then begin lifting the turntable till its whole weight rests on the wheels (Fig. 5.2). After placing the turntable at the required point let it acquire horizontal position again and push the handle back as far as it will go.

Figure 5.1





IMPORTANT: In order to protect the turntable from damage DO NOT hold it by the rotating disk when moving about!

For the device to operate properly its level should be adjusted by screwing the bottom legs in or out, each one in turn, until the rotating surface of the turntable acquires horizontal position.

IMPORTANT: When installing a photographed object on the turntable, please, remember that the object should be fixed in the center of the turntable and its weight should not exceed the greatest permissible one.

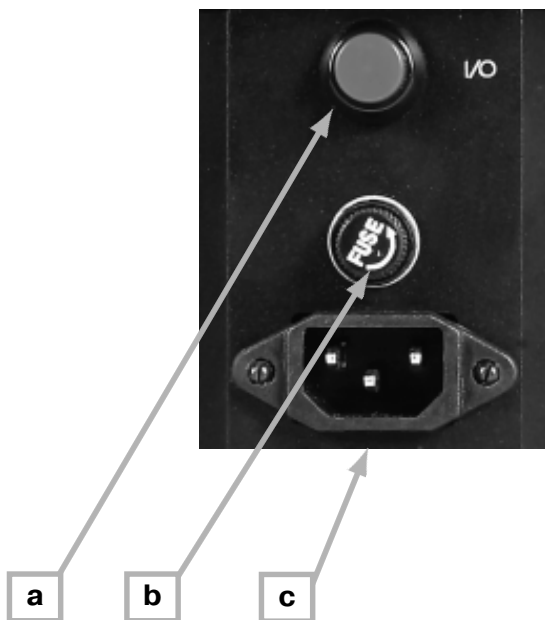
DO NOT place heavy objects on the turntable edge so that the mechanism does not get damaged.

[to contents](#)

6. OPERATING CONTROLS

6.1. The power panel located on the turntable body is intended for connecting the device to the power source, as well as for switching it on and off. Located on the power panel are ON/OFF (I/O) button (Fig. 6.1a), FUSE (Fig. 6.1b) and power cable socket (Fig. 6.1c).

Figure 6.1



6.2. The control panel (Fig.6.2) located on the turntable body is intended for operating modes control and indication, and also for remote control, studio flashes and camera connection to the turntable by means of special cables (included in the kit, optional). The cables are plugged into the special sockets (R, M, A) arranged on the control panel bottom.

Figure 6.2.1



Located on the control panel are:

MODE button - operating mode selection (Fig. 6.2.2a);

FRAME button - setting the number of the frames (Fig. 6.2.2b);

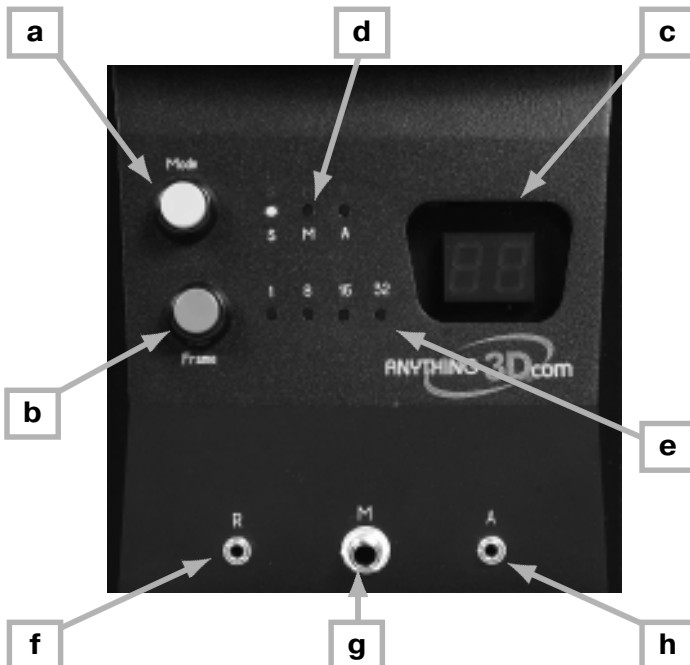
Digital display - indication of the frames number in «M» and «A» modes and the rotation speed in «S» mode (Fig. 6.2.2c);

S, M, A - operating modes indicators (Fig. 6.2.2d);

1, 8, 16, 32 - indicators of the frames number in a series (Fig. 6.2.2e);

R - remote control socket (Fig. 6.2.2f);

Figure 6.2.2

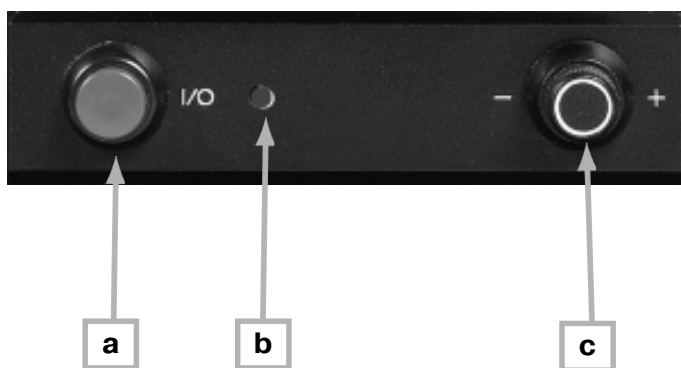


M - the turntable sync cable socket (Fig. 6.2.2g);

A - camera remote control cable socket for the turntable operation in «Auto Mode» (Fig. 6.2.2h).

6.3. The sound control panel (XT-350 only) located on the turntable body is intended for the ON/OFF voice indication and volume control. Arranged on the sound control panel are the ON/OFF voice indication button (Fig. 6.3a), sound ON/OFF indicator (Fig. 6.3b) and volume control handle (-/+) (Fig. 6.3c). 2 speakers are also fixed on the turntable body.




Figure 6.3



6.4. The remote control is intended for remote start of photography, selection of the rotation direction, manual control of rotation and adjustment of its speed.

The remote control is plugged into «R» socket on the control panel. Located on the remote control are (Fig.6.4):

- a** - counter-clockwise rotation button;
- b** - clockwise rotation button;
- c** - rotation instant stop and the pictures digital counter reset button.

The buttons  (Fig.27a) and  (Fig.27b) control the turntable rotation direction. Button  (Fig.27c) resets the digital indication on the Digital Display on the Control panel and stops rotation.

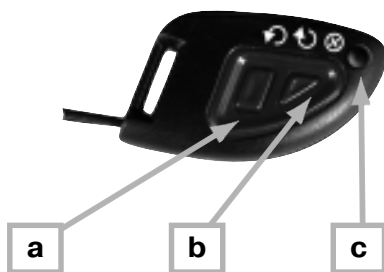


Figure 6.4

[to contents](#)

7. PREPARING FOR PHOTOGRAPHY

7.1 CONNECTING THE TURNTABLE

IMPORTANT: Plug in/out the connectors R, M and A only the power supply line is disconnected from the turntable!

1. Plug the remote control into the connector «R» on the control panel.

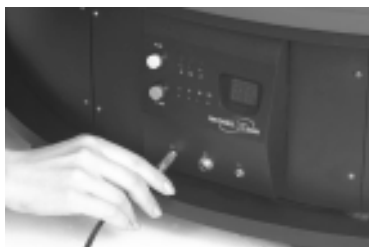


Figure 7.1.1

2. Plug the splitter into the studio flash sync terminal .



Figure 7.1.2

3. For «Manual» mode only: plug the turntable sync cable into one of the splitter sockets and the other end of the sync cable into «M» socket on the control panel.



Figure 7.1.3a



Figure 7.1.3b

4. Plug the studio flash sync cable which is not included in the complete set of the turntable equipment; but supplied together with the flash) into the second splitter socket and its other end into the camera sync terminal.



Figure 7.1.4a



Figure 7.1.4b

5. The owners of the digital cameras with an interface for Remote Control may take pictures in Auto Mode. In order to use Auto Mode you will have to apply Optional Adapter (Fig.7.1.5a) and Remote Control Cable (Fig. 7.1.5b). Optional Adapter and Remote Control Cable serve to connect a camera to the turntable.



Figure 7.1.5a



Figure 7.1.5b

6. Plug optional camera remote control adapter into the camera special remote terminal and connect the optional remote control cable to the adapter pin jack. Plug the other end of the remote control cable into «A» connector on the turntable control panel.



Figure 7.1.6a



Figure 7.1.6b

7. Plug the power cable into the corresponding socket on the power panel and then connect it to the AC supply-line.



Figure 7.1.8

7.2. STARTING THE TURNTABLE

1. Depress the ON/OFF button (I/O) on the power panel to switch on the turntable. The indicators «M» and «32» on the control panel will go on and digit «1» on the digital display panel will also be displayed.



Figure 7.2.1

2. Depress the ON/OFF (I/O) button on the sound control panel (XT-350 only) to initiate the sound indication; the LED located on same panel will go on. Then, using the volume control knob set the desired volume.



Figure 7.2.2

3. To set the frames number in one series (32, 16 or 8) for full turn press the «Frame» button on the control panel. While rotation the turntable will make the corresponding number of stops for taking pictures. You may also use the mode in which the turntable makes a whole turn without any stops by setting the light indicator «1» in its ON position.



Figure 7.2.3

8. OPERATING MODES

The turntable has different operating modes, namely:

«**S**» **mode** (Rotation Speed Adjustment Mode) where the turntable rotation speed is set by remote control.



Figure 8.1

«**M**» **mode** has two versions – Manual mode and Slave mode that differ in the method of the turntable rotation control. In Manual mode the turntable rotation is operated by means of remote control. In Slave mode the turntable obtains the control commands from the camera.



Figure 8.2

In Manual Mode you have the utmost control over the 3D series photography process. When using this mode you can change the

position of the object (e. g. in case you desire to demonstrate the moving parts of the object or smoothly change the model's attitude), return back and make the bad frame once more.

Slave Mode enables the semi-automatic photography. In order to get each frame of the series you just need to press the camera release.

In this mode the turntable rotates counter-clockwise.

«A» mode (Optional Auto mode). This is an optional mode. The use of the cameras with the remote control interface in this mode will be possible after you acquire the Optional Adapters and Remote Control Cable.



Figure 8.3

In this mode the turntable makes only one turn without a stop, and at the points of making a frame a command to operate the camera is given through the connector «A» on the control panel. It is very easy to use Auto mode and it saves time in the process of shooting as you just need to press the button

selecting the direction of rotation on the remote control and further on all the operations in making the 3D series will be performed automatically requiring no participation of the photographer.

Prior to starting the turntable in any mode the required quantity of frames in a series should be set. To set the quantity of frames in a series (32, 16, 8 or 1) for one turn press the «Frame» button on the control panel several times. The indicators under the corresponding digits will go on.



Figure 8.4

Additional information:

1. Voice message always duplicates the indication (if the sound indication is ON);
2. Pressing the «Mode» button always causes the turntable to stop and the digital display to reset;
3. The quantity of the frames may be set only when the turntable has stopped; at the same time the indication on the digital display will also reset;
4. The mode with the number of frames set to «1» is intended for viewing the object, therefore, indication on the digital display is not available in this mode.

9. ROTATION SPEED ADJUSTMENT MODE

The rotation speed of the turntable should be chosen prior to photography. It will depend on the photo equipment abilities: the time required for the flashbulbs charging between the pulses and also the time required for entering the information into the computer or recording it on the flash-card in the digital cameras. To set the required rotation speed, proceed as follows:

1. Turn on the turntable by pressing red ON/OFF (I/O) button on the power panel.



Figure 9.1

3. Choose mode «S» by pressing the «Mode» button.



Figure 9.2

2. Choose the required quantity of the frames (8, 16, 32) by pressing «Frame» button.



Figure 9.3

4. Press a button determining the rotation direction on the remote control (↻ will increase the speed and ↺ will decrease it). The turntable will start to rotate. Press the rotation control button on the remote control a several times in succession in order to set the required rotation speed.



Figure 9.4

- In «S» mode the digits indicate the number of seconds required for the turntable to move from one frame to another; e. g. «8» means that it takes 8 seconds for the turntable to move from one frame to the next one.

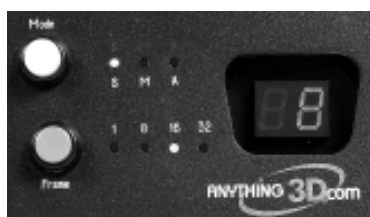


Figure 9.5

- In order to switch over from the “S” mode to any other operation mode press the “Mode” button on the control panel. The “S” mode operation completed the turntable rotation stops. The determined speed value is used for further operation.



Figure 9.6

The minimal rotation speed is set when the turntable is switched on for the first time.

The turntable will maintain the set speed of rotation after it is turned off.

IMPORTANT: In «S» mode the continuous rotation of the turntable should not exceed 10 minutes.

10. MANUAL MODE

In this mode to create a 3D series the turntable with an object on it should rotate after each shot by means of the remote control.

The turntable may rotate both clockwise and counter-clockwise at your option. The direction of rotation is prescribed by pressing the corresponding button on the remote control.

IMPORTANT: Operation in Manual Mode requires the turntable connection to Remote Control only. The Turntable Sync Cable should be disconnected from the jack “M” on the control panel.

To shoot in Manual Mode proceed as follows:

1. Switch on the turntable by pressing the red ON/OFF (I/O) button on the power panel.



Figure 10.1

2. Choose «M» mode by pressing the «Mode» button.



Figure 10.2

3. Choose the required quantity of frames (8, 16, 32) by pressing the «Frame» button.



Figure 10.3

4. Take the first picture with the camera.



Figure 10.4

5. Press one of the buttons on the remote control to set the direction of rotation. After



Figure 10.5

that the rotating surface of the turntable will move to the next frame. Indication of the digital display located on the control panel will increase by one.

6. If required the bad shot may be taken again. With this aim press the other button control rotation on the remote control. The turntable will go back to the previous shot position. Take the picture. Then press the first rotation controlling button to resume the movement of the turntable in the previously set direction.



Figure 10.6

6. Take the next picture after the rotation has ceased.
7. Depress the button on the remote control once again and take the pictures one by one in each point of photography until rotation is completed. Indication of the digital display on the control panel should coincide with the set number of frames in the series. The moment of photography of each frame is accompanied with sound indication (XT-350 only).

[to contents](#)

11. SLAVE MODE

Slave Mode is a semi-automatic mode. Operated in this mode the turntable rotates till the point of making the next frame after pressing the camera shutter release. The mode is more convenient as there is no need to use remote control for the turntable rotation, i. e. first the picture is made and then the turntable rotating surface spins automatically till the next frame and so on. The operation order in this mode is as follows:

1. Connect the turntable to the sync terminals of the camera (Fig. 11.1) and flash by means of the splitter and cables (Fig. 11.2) as it is pointed out in item 6.2 above via «M» connector.



Figure 11.1



Figure 11.2

2. Choose «M» mode by means of the «Mode» button .



Figure 11.3

3. Set the quantity of frames points (8 - 16 - 32) by means of «Frame» mode.



Figure 11.4

4. Take a picture by pressing the camera release. After that the turntable will automatically get to the next frame.



Figure 11.5

5. Take the next picture when the table has stopped.
6. Take pictures in each point of photography till the turn is completed.

The digital display on the control panel shows the frame number. The moment of photography of each frame is accompanied with sound indication (XT-350 only).

In this mode only counter-clockwise rotation is supported.

12. OPTIONAL AUTO MODE

In Auto Mode during the process of photography the turntable makes one complete turn without any stops. It makes the time of photography shorter and gives the opportunity to improve the 3D series quality when taking pictures of the photo models.

The Auto Mode enables a whole series of pictures by way of pressing just one button on the remote control. The frames are made automatically as the turntable controller sends the control signal to the camera at each next frame point. This mode is applicable for the digital cameras with the remote control interface. The adapter and camera remote control cables are not included in the complete set of equipment.

1. Insert the optional camera remote cable into socket «A» on the control panel by using the remote control cable and adapter connector.



Figure 12.1

2. Set «A» mode by pressing the «Mode» button.

**Figure 12.2**

3. Set the required quantity of frames (8, 16, 32) by pressing the «Frame» button.

**Figure 12.3**

4. Now, by pressing one of the buttons on the remote control the turntable will be caused to start its rotation in the prescribed direction, and the camera will take pictures at

**Figure 12.4**

each stop of the turntable in any point of photography.

A complete series of pictures will be obtained in this manner.

The digital display on the control panel shows the frame number. The moment of photography of each frame is accompanied with sound indication (XT-350 only).

The set parameters will be retained after the turntable is switched off.

NOTE: In Auto Mode the turntable synch cable connected to «M» jack may be removed as it is not used. However, the connected synch cable won't affect the turntable operation in Auto Mode.

[to contents](#)

13. FREQUENTLY ASKED QUESTIONS

Question 1: What is to be done if the camera does not possess a synch contact for the flash bulb synch cable ?

Answer: There is a number of solutions to this problem :

1. If the camera lacks a synch contact for the flash bulb synch cable and if the synch contact is non-standard or arranged in the place of the flash bulb attachment on the camera it is recommended to purchase an adapter with a standard synch contact ;
2. If the studio pulse light and a stationary flash bulb on the camera are used the studio flash bulbs should be equipped with light synchronizers.
3. Use constant illumination.

Question 2: What is to be done if the camera does not possess a connector for the camera remote control adapter?

Answer: All the turntable operation modes, except Auto one, may be used. The camera remote control cable is not used in this case and there is no need to connect it to socket «A» on the control panel.

Question 3: If the photo studio is supplied with constant illumination, in what way should the photography be made?

Answer: When applying the constant illumination you may use all the turntable operation modes and there is no need to use the

synch cable intended for the turntable connection to synch pin jack of the camera and that intended for connecting the camera to the flash.

[to contents](#)

14. RECOMMENDATIONS FOR USE

1. Always place the turntable on a firm surface which will not get dented and use special devices if the turntable requires levelling.



Figure 14.1

2. Arrange the equipment connecting cables so that nobody touches them when moving around the studio. The cables may be fixed to the equipment with adhesive tape and it will help to avoid damaging both people and equipment.
3. Adjust the turntable rotation speed in conjunction with that of the camera (it takes some time with digital cameras to store the information).
4. When taking photographs of the people in all modes except Auto one it is recommended to use a low speed of the turntable rotation for smooth movement (and to help the photographed person to maintain his attitude without much effort). In Auto Mode use the greatest speed of rotation allowed

- by your photographic equipment for a series of images.
5. Use mainly auto mode («A» mode) when you take photos of the static objects to save your time.
 6. Slave or Manual Modes («M» mode) are more suitable when you take the photos of people; make sure that the model keeps her/his eyes open to avoid having the frames where the eyes are closed.
 7. Application of the turntable enables animated 3D series. As a result it is possible to get very chic 3D series of the photo models making some movements during rotation or changing their attitude, and also of some transforming objects (the movable parts of which may be drawn in/out or rotated) and give more complete information about the object.
 8. Say, you want to make a 32-frame 3D series where being rotated the photographer's model gently raises her hand, tithivates her hair and then puts her hand down again. It is recommended to train this movement on the rotating turntable before taking pictures by the camera. The model must split her movement into 32 phases so that after making a full turn she may acquire the initial attitude. The voice indication of the frames will help to do so. For example, the movement of the hand starts from the 3rd frame, the hand reaches the

highest point by the 13th frame and the model fixes her hair. Starting from the 18th frame the hand moves down and acquires the initial position by the 30th frame.

9. When working in the Manual or Semi-Automatic Modes you can make the animated 3D series of the objects. For instance, you may show how during rotation of the scanner its lid is being opened and closed. When the turntable stops after a frame the position of its lid must be changed a little so that, say, from frame 4 to frame 13 the lid will be evenly opened, from frame 14 to frame 18 it will be fixed in the open position and closed from frame 19 to frame 29. While doing this it is very convenient to get the information about the turntable posi-

Figure 14.2



tion (about the number of the frame) by means of the voice indication. The interjacent positions of the lid may be fixed with the help of anything you have at hand, tension members, for example. They may be removed from the image during the photographs processing.

10. Start photography from the model's back to make sure that the 1st and 32nd frames of the series get stitched smoothly without displacement of the model as in this case the insignificant shift of the model from the 32nd frame to the 1st one is practically unnoticeable. (Fig.14.2)

Figure 14.2



11. Use white background as much as you can and adjust the object illumination (steadily N) so that the background and the turntable surface blend. It will simplify further processing of the series by the image editor.
12. If the ready images are to be arranged against a light background use the accessory light cover for the table surface (included in the kit) and the light background to avoid a dark outline around the object. Accordingly, it is preferable to use the accessory dark cover (also included in the kit) and a dark background (the background cover is not included in the complete set of the turntable equipment) to take the photos of the objects arranged on a dark background.
13. The changeable covers must be washed as they get dirty. They may be washed both by hands and washing machine at a temperature below 140°F.
14. Apply the camera auto focus only for preliminary adjustment for sharpness and disable it in the process of taking the photos.

[to contents](#)

15. TROUBLE-SHOOTING

Malfunction	Possible Cause	Remedy
Turntable won't switch on by pressing ON/OFF button (I/O)	<ol style="list-style-type: none">1. Turntable isn't connected to AC power supply-line.2. Power cable is not tightly plugged into its socket on power panel.3. Burnt fuse on power panel.	<ol style="list-style-type: none">1. Connect the turntable to AC power supply-line.2. Disconnect the cable from switching connector and plug it in again.3. Replace fuse on power panel.
Turntable gets energized but indication on digital panel is invalid	You plugged cables in "R", "M" and "A" sockets prior to disconnecting the turntable from AC power supply-line.	Switch the turntable off, connect cables properly following the instruction and then switch the turntable on.
Frame numbers are changed on digital indication panel but the turntable surface won't move	<ol style="list-style-type: none">1. You have violated the instruction and photographed the objects or people whose weight was greater than maximal permissible one. Rotation gear is damaged.2. You often photograph objects located far from turntable centre. Rotation gear is damaged.	Contact Anything3D.

Malfunction	Possible Cause	Remedy
Studio flash won't work in slave or auto mode.	<ol style="list-style-type: none"> 1. Unreliable contact in camera sync terminal or studio flash. 2. Damaged cable connecting studio flash and "M" socket. 3. Unreliable contact with control panel sockets or in splitter connected to studio flash. 	<ol style="list-style-type: none"> 1. Make sure that camera sync terminal is operable and its contact with flash is reliable. 2. Replace cable. 3. Test cable and "M" connector contact on control panel for reliability; make sure that required splitter contact is connected to sync terminal.

[to contents](#)

16. MAINTENANCE

1. In order to replace the fuse proceed as follows :

- a. Disconnect the power supply wire from the AC power supply-line;



Figure 16.1

- b. Screw out the cap with the fuse by turning it counter-clockwise ;



Figure 16.2

- c. Replace the fuse ;
 - d. Screw in the cap with the new fuse ;
 - e. Connect the power supply wire to the supply line.
2. Clean the turntable from dust on a regular scale.

3. Flannel the turntable rotating surface as it gets soiled.
4. Do not use solvents, petrol etc. for cleaning the turntable.
5. Do not allow liquids to get inside the turntable.

17. SPECIFICATION

1. Rotation surface diameter:
 - 40 inches (XT-350);
 - 20 inches (XT-100).
2. Rotation speed:
 - min - 1 turn / 168 sec;
 - max - 1 turn / 72 sec.
3. Rotation speed adjustment:
 - smooth.
4. Rotation direction:
 - clockwise;
 - counter-clockwise.
5. Information about rotation speed:
 - visual (digital indication).
6. Information about photography point number:
 - visual (digital indication);
 - voice (XT-350 only).
7. Frames number / 1 turn:
 - 8;
 - 16;
 - 32.
8. Rotation characteristics :
 - continuous rotation - control signal is sent to the camera in each point of photography, and the picture is taken without stopping the turntable;

- discrete rotation - turntable is stopped at each photography point and then is started again.
9. Maximal permissible weight of the object placed on the turntable:
 - 350 pounds (XT-350);
 - 100 pounds (XT-100).
 10. Overall dimensions:
 - 40x40x11 inches (XT-350);
 - 20x20x8 inches (XT-100).
 11. Power supply - AC 110 V \pm 10%, 60 Hz \pm 3 Hz.
 12. Power consumption - 150 W.
 13. Ambient atmosphere conditions:
 - operating temperature - 32°F to 95°F;
 - operating humidity - 10% to 80%;
 - storage temperature - -4°F to 113°F;
 - storage humidity - 5% to 95%.

18. PRODUCT WARRANTY

This product is guaranteed to be free from manufacturing defects in material and workmanship under normal use for a period of 1(one) year from the date of purchase. If a defect that is covered by the foregoing warranty occurs during the applicable period stated above, Anything3D Corp., at its option, will either repair or replace the product, and such action on the part of Anything3D Corp. shall be the full extent of Anything3D Corp. liability, and the Customer's sole and exclusive remedy. This warranty does not cover a product (a) used in other than its normal and customary manner; (b) subject to misuse; (c) subject to alterations, modifications or repairs by the Customer or by any party other than Anything3D Corp. without prior written consent of Anything3D Corp.; (d) special order or «closeout» merchandise or merchandise sold «as-is» by either Anything3D Corp. or the Anything3D Corp. dealer; or (e) merchandise that has been discontinued by the Anything3D and either parts or replacement units are not available due to reasons beyond the control of Anything3D Corp.

Anything3D Corp. shall not be responsible for any defects or damage that in Anything3D Corp.'s opinion is a result of mishandling, abuse, misuse, improper storage or improper operation, including use in conjunction with equipment which is electrically or mechanically incompatible with or of inferior

quality to the product, as well as failure to maintain the environmental conditions specified by the Anything3D. This warranty is extended only to the original purchaser. Any breach of this warranty shall be waived unless the customer notifies Anything3D Corp. at the address noted below within the applicable warranty period.

THE CUSTOMER UNDERSTANDS AND AGREES THAT EXCEPT FOR THE FOREGOING WARRANTY, NO OTHER WARRANTIES, WRITTEN OR ORAL, STATUTORY, EXPRESSED OR IMPLIED, INCLUDING ANY IMPLIED WARRANTY OF MERCHANTABILITY OR FITNESS FOR A PARTICULAR PURPOSE, SHALL APPLY TO THE PRODUCT. ALL SUCH IMPLIED WARRANTIES ARE HEREBY EXPRESSLY DISCLAIMED.

LIMITATION OF LIABILITY

Anything3D Corp. will not be liable for any claims, actions, proceedings, costs, expenses, damages or liabilities arising out of the use of this product. Operation and use of the product are the sole responsibility of the Customer. Anything3D Corp.'s sole undertaking is limited to providing the products and services outlined herein in accordance with the terms and conditions of this Agreement. The provision of products sold and services performed by Anything3D Corp. to the Customer shall not be interpreted, construed, or regarded, either expressly or implied, as being

for the benefit of or creating any obligation forward any third party of legal entity outside Anything3D Corp. and the Customer; Anything3D Corp.'s obligations under this Agreement extend solely to the Customer; ANYTHING3D CORP.'S LIABILITY HEREUNDER FOR DAMAGES, REGARDLESS OF THE FORM OR ACTION, SHALL NOT EXCEED THE FEES OR OTHER CHARGES PAID TO ANYTHING3D CORP. BY THE CUSTOMER OR CUSTOMER'S DEALER. ANYTHING3D CORP. SHALL NOT, IN ANY EVENT, BE LIABLE FOR SPECIAL, INDIRECT, INCIDENTAL, OR CONSEQUENTIAL DAMAGES INCLUDING, BUT NOT LIMITED TO, LOST INCOME, LOST REVENUE OR LOST PROFIT, WHETHER SUCH DAMAGES WERE FORESEEABLE OR NOT AT THE TIME OF PURCHASE, AND WHETHER OR NOT SUCH DAMAGES ARISE OUT OF A BREACH OF WARRANTY, A BREACH OF AGREEMENT, NEGLIGENCE, STRICT LIABILITY OR ANY OTHER THEORY OF LIABILITY.

PRODUCT WARRANTY REGISTRATION

In order to validate the warranty on your product, Anything3D Corp. must receive a completed Product Warranty Registration Card for each unit. Please, complete the form below and immediately mail it to our Service Center: Anything3D Corporation, 901 Sneath Ln. Suite 105 San Bruno CA 94066. Products qualifying for warranty re-

pair will be either repaired or replaced within 10 business days of receipt of merchandise unless the customer is notified otherwise.

OBTAINING WARRANTY SERVICE

To obtain warranty service on your unit, take or send the product, postage paid, with a copy of your sales receipt to our service center, Anything3D Corporation at the address noted above. All merchandise must be fully insured with the correct postage: Anything3D Corporation will not be responsible for improper postage, or missing or damaged merchandise during shipment.

Free Manuals Download Website

<http://myh66.com>

<http://usermanuals.us>

<http://www.somanuals.com>

<http://www.4manuals.cc>

<http://www.manual-lib.com>

<http://www.404manual.com>

<http://www.luxmanual.com>

<http://aubethermostatmanual.com>

Golf course search by state

<http://golfingnear.com>

Email search by domain

<http://emailbydomain.com>

Auto manuals search

<http://auto.somanuals.com>

TV manuals search

<http://tv.somanuals.com>