

# Skype™ WiFi Phone Model SPH101 Use Manual



# NETGEAR

**NETGEAR**, Inc.

4500 Great America Parkway  
Santa Clara, CA 95054 USA

© 2006 by NETGEAR, Inc. All rights reserved.

## **Customer Support**

NETGEAR, Inc. Support Information

Phone: 1-888-NETGEAR, for US & Canada only. For other countries, see your support information card.

E-mail: [support@netgear.com](mailto:support@netgear.com)

North American NETGEAR website: *netgear.com*

## **Translated Versions of This Manual**

Foreign language support: [documentation.netgear.com/sph101/index.htm](http://documentation.netgear.com/sph101/index.htm)

# Contents

## Getting Started

What Is in the Box .....	2
Charge the Battery .....	2
Join a Wireless Network .....	4
Sign In to Skype .....	6
Try Your WiFi Phone .....	7

## Using the WiFi phone

Controls .....	10
On/Off Button Menu .....	11
Change Your Status .....	12
SkypeOut, SkypeIn, and Skype Voicemail .....	13
Get Your Skype Contacts .....	13
Contacts .....	14
Advanced Options .....	17
Authorization .....	21
History .....	23
Missed Calls .....	23
Voicemail .....	24

## **Settings and Wireless Networks**

Settings Menu .....	26
Network .....	28
General .....	29
Advanced .....	30
Preferred Networks .....	31
Connect to a Network .....	32

## **Troubleshooting**

Find the Problem .....	35
Wireless Networks .....	36

## **Wireless Default Settings and Technical Specifications**

### **Related Documents**

### **Regulatory Compliance**

# Getting Started



**Warning:** This WiFi phone will not work during a power failure, broadband Internet outage, or without a wireless connection.



**No Emergency Calls.**

Skype is not a replacement for your ordinary telephone and cannot be used for emergency calling.

The WiFi phone connects wirelessly to Skype through your broadband Internet connection. You can use the WiFi phone to make and receive calls and to manage Skype. To set up and use your WiFi phone:

1. Check the package contents.
2. Charge the battery.
3. Connect to a wireless network.
4. Sign in to Skype.
5. Use your WiFi phone.

---

## What Is in the Box

The Skype™ WiFi Phone package includes the following items:

- WiFi phone
- Battery
- Battery charger
- *Skype™ WiFi Phone Model SPH101 Use Manual*
- NETGEAR CD
- Warranty card

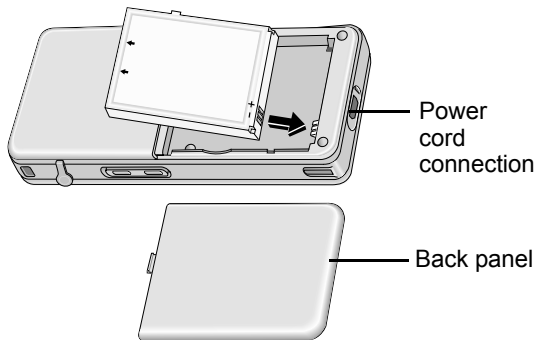
---

## Charge the Battery

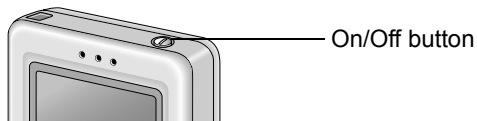
For information about radio frequency (RF) exposure, FCC notices and regulatory information, see “Regulatory Compliance” on page 43.

The first time that you use the WiFi phone, follow these steps.

1. Remove the clear plastic cover from the display.
2. Open the back panel, put the battery inside the WiFi phone, and replace the back panel.



3. Connect the power cord, and plug it into an outlet.  
The battery charges, which can take up to 12 hours.
4. Push the On/Off button to turn on the WiFi phone.



5. Use the soft key to accept the No Emergency Calls message.  
The WiFi phone tries to connect to a network. See "Join a Wireless Network" on page 4. Then it prompts you to sign in to Skype. See "Sign In to Skype" on page 6.

# Join a Wireless Network

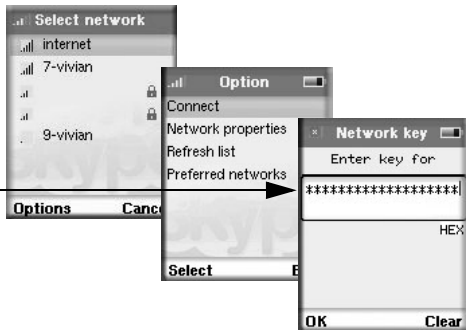
The WiFi phone scans for wireless networks in your area. It joins the first open network without wireless security that it finds. Then the display shows:

- Sign in to Skype
- Create new account

## Secure Networks

If you want to join a particular network, or a network with wireless security, select Cancel with the soft key. Select Exit, and then select Connect. The WiFi phone shows a list of available networks.

Use the \*a/A button to change to lower-case, uppercase, or numeric entry.





The first time that you join a wireless network with security, you must know the password or WEP keys. When entering letters, tap the button to change from a, to b, and so on. After you have joined the network, the WiFi phone remembers the network settings and saves them in Preferred Networks. See “Preferred Networks” on page 31.

If you do not see the network that you want, make sure that it is up and running. Select Cancel and you will see these options:

- Connect
- Network properties
- Refresh list
- Preferred networks

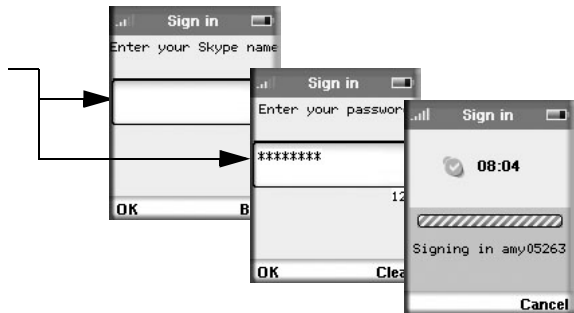
Select Refresh list to find the network. For more help with wireless networks, see “Settings and Wireless Networks” on page 25.

---

# Sign In to Skype

After you join a network, you are prompted to sign in to Skype, or to create a new Skype account. Enter your Skype Name and Skype password.

Use the \*a/A button to change to lower-case, uppercase, or numeric entry.



Select Yes to save your name and password for automatic sign in. If you have many contacts, you may need to wait five minutes or more to get them onto the WiFi phone the first time you sign in. You can use the soft keys to select Menu or Contacts.

---

# Try Your WiFi Phone

Your WiFi phone is now ready to use. Hold the phone as you would any other telephone with the antenna pointed up and over your shoulder.

To make a call:

1. Enter the phone number.



**Tip:** Purchase Skype credit from the Skype website in order to make SkypeOut calls.

If you are making a SkypeOut call, press and hold down the zero (0) button to dial a plus sign (+) before entering the number.

2. Press the Call button.

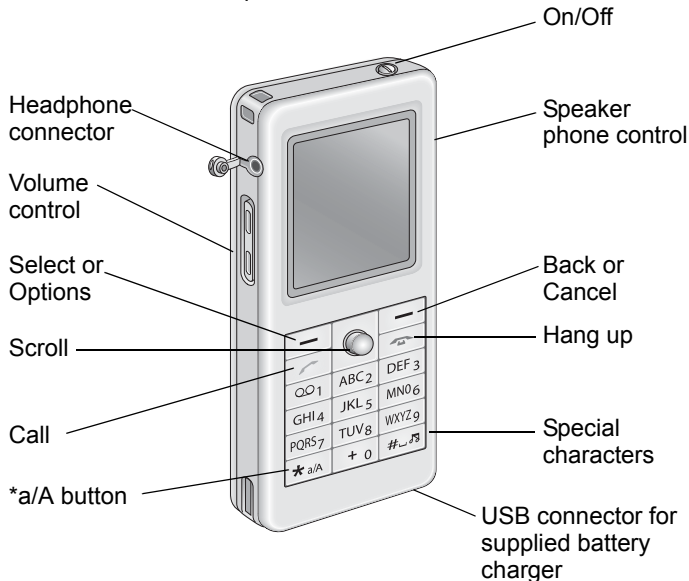
The Call button has a green phone icon on it, and is on the left side of the WiFi phone.

For information about getting your Skype contacts and using the WiFi phone, see “Using the WiFi phone” on page 9.



# Using the WiFi phone

After you set up the WiFi phone, you can use it to make and receive calls. The WiFi phone controls are shown below.



---

# Controls

The controls on the WiFi phone are described in this section.

- **Volume control.** Change the volume for the WiFi phone.
- **Speaker phone control.** Turn the speaker phone on or off.
- **Select or Options.** This soft key works with the display as *Select*, or *Options*.
- **Back or Cancel.** This soft key works with the display as “Back” or “Cancel.”
- **Call.** Make a call.
- **Hang up.** End a call.
- **Scroll.** Scroll up or down through menu displays. You can use the edges to move left or right.
- **a/A \* button.** Use this together with the keypad buttons to enter lowercase letters, uppercase letters, or numbers.
- **Special characters.** Use this to enter special characters such as punctuation marks.

---

## On/Off Button Menu

The On/Off button is located at the top of the WiFi phone. After the WiFi phone starts up, you can use this button to display a menu. The menu offers these options:

- **Switch off.** Switch off the WiFi phone.
- **Silent.** Turn off the ring tone for the WiFi phone.
- **Change status.** Change your Skype status. See “Change Your Status” on page 12.
- **My profile.** View your profile.
- **Sign out.** Sign out from Skype.



**Warning:** Sign out removes the contacts and history from the phone. Make sure that you want to sign in with a different name before using this feature.

- **Network details.** View details about the wireless network that you are using.
- **View networks.** View wireless networks in your area. See “Join a Wireless Network” on page 4 and “Connect to a Network” on page 32.

---

## Change Your Status

Normally, the WiFi phone is Online. To view or change the status:

1. Push the On/Off button located at the top of the WiFi phone.
2. Select Change status.

The WiFi phone shows the following options:

- **Offline.** Exit Skype, but stay connected to your wireless network.
- **Online.** The WiFi phone is ready to make and receive Skype calls.
- **Skype me.** Invite messages from Skype users.
- **Do not disturb.** The WiFi phone will not receive calls.
- **Invisible.** The WiFi phone is online, but appears to be Offline to other Skype users.

For more information about these features, see the Skype website at [skype.com](http://skype.com).



---

## SkypeOut, Skypeln, and Skype Voicemail

The WiFi phone is optimized for Skype. With Skype you can make free calls to anyone else using Skype. If you have already signed up for the following you can also use them immediately on your WiFi phone:

- **SkypeOut.** Make calls to people without Skype.
- **Skypeln.** People without Skype can call you at an assigned regular phone number.
- **Skype Voicemail.** Send and receive voicemail from other Skype users.

For more information about Skype, see the Skype website at *skype.com*.

---

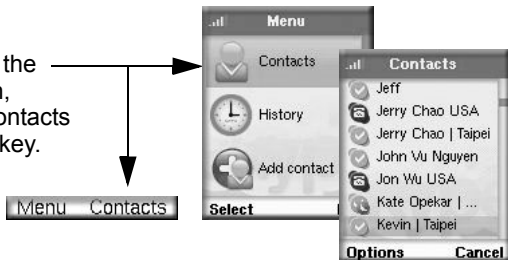
## Get Your Skype Contacts

The first time that you use your WiFi phone, or after it has been reset, your contacts are automatically loaded onto your WiFi phone. This can take five minutes or more. The contacts remain on the WiFi phone unless it is reset or you sign in with a different Skype Name.

# Contacts

Select Contacts. Then scroll and select a contact.

Either select the contacts icon, or choose Contacts with the soft key.



You can use these options:

- **Call.** Call a contact.
- **Send voicemail.** Send voicemail to a contact.
- **View Profile.** View details about a contact.
- **Advanced.** Display the Advanced Options menu.

# Call a Contact

To call a contact:

1. Select a contact.

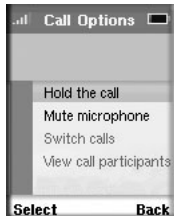
You can press a letter key on the phone to go to contacts whose names begin with that letter.

2. Select Options with the soft key. Then select call.



3. During the call, you can use the soft keys to select Options or End Call.

Select Options to use Hold, Mute/Unmute, Switch calls, or view participants.



## Options During a Call

Choosing Options lets you manage your call and work with contacts.

- **Hold.** Put the person you are calling on hold. The phone puts a call on hold if there is another incoming call.
- **Mute microphone/Unmute.** Turn off the sound and turn it back on again.
- **Switch calls.** Switch between calls.
- **View call participants.** See which contacts are participating in the call.

When you receive a call, the WiFi phone shows an incoming call message. You can answer the call, send a busy signal, or reject the call. To answer the call, use the soft key to select Answer, or press the Call button.



---

## Advanced Options

Select a contact. Select Options, and then select Advanced. Scroll and select an advanced option.

- **Rename.** Change a contact's name.
- **Remove.** You can remove any contact from your contacts list.
- **Block.** You can block or unblock a contact. A blocked icon shows which contacts are blocked.
- **Request authorization.** See "Authorization" on page 21.
- **Add a contact.** See "Add a Contact" on page 18.
- **Search for users.** See "Search for Users" on page 20.

# Add a Contact

You can add a Skype contact or a SkypeOut contact.

## Choose by Skype

To add a Skype contact:

1. From the contacts list, select Options, and then select Advanced.
2. Scroll down and select Add Contact.
3. Choose By Skype Name.
4. Enter the name, and the WiFi phone searches for that name.
5. Select Add.  
The contact is added to the list.
6. Select OK to send an authorization request.

## By SkypeOut Number



**Tip:** You may need to purchase Skype credit to make a Skype Out call.

To add a SkypeOut contact:

1. From the contacts list, select Options, and then select Advanced.
2. Scroll down and select Add Contact.
3. Choose By SkypeOut number.
4. Enter a descriptive name for the contact.
5. Next, enter a “+”, followed by the contact’s number (including country code and area code).
6. Select OK, and the contact information is added to the contact list.

# Search for Users

You can search by Skype Name, by full name, or by e-mail.

To search:

1. Select Search from the menu, or select it on the Options menu with the soft key.
2. Type your search criteria with the keypad.



**Tip:** Use the a/A \* button to change from lowercase, to uppercase, or numeric entry.

To stop a search, use the soft keys to choose Stop or Cancel.

3. Select a Skype user from the list.
4. Use the soft key to select Options.

The following options are displayed:

- **Show more results.** View more search results.
- **Previous results.** Go back to previous search results.
- **Search again.** Start a new search.
- **Call.** Call a contact.
- **Add to contacts.** See “Add a Contact” on page 18.
- **View profile.** View the Skype profile for a contact.



## Authorization

If you want to let other Skype users know when you are online, then you need to authorize them. If someone adds you to his or her contact list, that person is listed as Authorization waiting.

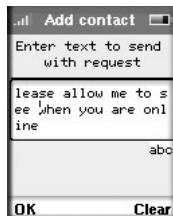
You can use the privacy settings in Skype to receive incoming calls only from people with authorization.

After you add a contact, you can request authorization from that contact.

## Request Authorization

To request authorization from a contact:

1. Select a contact, go to the History and select Authorizations.
2. Select Request authorization.

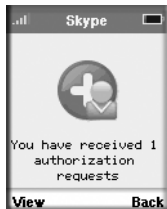


# Authorization Waiting

These contacts are waiting for you to authorize them so that they will be notified when you are online.

1. From the contacts display, select Options with the soft key.
2. Select Authorization waiting.
3. Any contacts who are waiting are listed here. You can accept, decline, or decline and block them.

- **Accept.** Notify this contact when you are online.
- **Decline.** Decline to let this contact know when you are online.
- **Decline and Block.** Decline to let this contact know when you are online, and block calls from this contact.



---

## History

View the calls that have been made, received, and missed from this WiFi phone since the last time it was reset. You can also view Authorizations here. To can go to this screen, you can use the History button or the History menu selection.



---

## Missed Calls

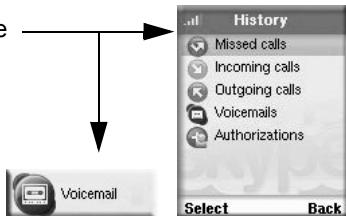
Select Missed calls from the History to view missed calls. From the Missed calls display, select Options with the soft key to use these options:

- **Call.** Call the selected number.
- **Send voicemail.** If you have voicemail you can send voicemail.
- **Details.** View details about the caller.
- **Delete.** Delete the missed call from the list.
- **View profile.** View the profile for the caller.
- **Add to contacts.** Add this caller to your contacts.
- **Clear list.** Erase the list of missed calls.

# Vicemail

If you have purchased Skype Voicemail, then you can access it from the main menu or the History menu.

Either select the Voicemail icon, or Voicemail from History.



**Tip:** From the main menu you can press and hold down the 1 button to go directly to Voicemail. You cannot use this shortcut while entering numbers.

# Settings and Wireless Networks

You can use the Settings menu on the WiFi phone to view or adjust the following:

- Skype My profile settings, notifications, and privacy
- Wireless network setup and security
- WiFi phone settings including sound, ring tone, time, language, and back light
- Advanced settings

Once you set up the WiFi phone to work with a wireless network, it remembers the network settings in case you use that network again.

# Settings Menu

Select Settings to view or adjust the settings for the WiFi phone. You can scroll to display the items at the bottom of the list.

The following options are available:

- **My profile.** Enter optional My profile settings for your Skype account, including full name, birthday, gender, country, province, city, and home phone.
- **Network.** View the network status and setup including WiFi status, IP status, View networks, and Auto-connect. See “Network” on page 28.
- **General.** Select General to manage the password, auto login, language, software updates, and resetting the WiFi phone. See “General” on page 29.
- **Voicemail.** Enter your welcome message. Choose Use When Talking, or Use When Reject. Set the delay time.
- **Privacy.** Work with calls and call history.
- **Notifications.** Set up the WiFi phone to notify you if someone is online, someone calls, someone chats, and authorization.



- **Sound devices.** Set the Audio In, Audio Out, and auto adjustments.
- **Tones.** Set the ringing tone, ringing volume, sound alerts, vibrator, key tones, and default.
- **Time and Date.** Set the date, clock, time zone, clock format, date format, and date separator.
- **Manage blocked users.** View blocked contacts. You can unblock them here.
- **Connectivity.** This shows whether or not the earphone is connected.
- **Phone Settings.** Adjust the brightness and duration of the back light.
- **Information.** View the network, MAC address, firmware version, firmware date, serial number, and hardware version.
- **Advanced.** The advanced features are Check updates, Ports, No. Alt Ports, HTTPS enable, and HTTPS Address. See “Advanced” on page 30.

---

# Network

From the Settings menu, select Network. The Network menu has these options:

- **Wireless networks in range.** Scan for networks in your area, and display them.
- **Preferred networks.** You have connected to these networks with your WiFi phone. See “Preferred Networks” on page 31.
- **Auto-connect to open network.** If the WiFi phone does not find a preferred network, it will connect to the first open wireless network that it finds. An open wireless network does not use wireless security.
- **Define SSID and connect.** Use this to work with hidden networks. Hidden networks do not broadcast their SSID. The SSID is also called the network name.



---

# General

From the Settings menu, select General. The General menu has these options:

- **Change password.** Change your Skype sign-in password.
- **Auto sign in.** Automatically sign in to Skype when you use the WiFi phone (recommended).
- **Language.** Select a language.
- **Software updates.** Check for software updates for the WiFi phone.
- **Reset.** Choose from two reset methods.
  - **Reset all.** Reset the WiFi phone to its factory defaults, as shown in “Wireless Default Settings” on page 39. All the stored information in the WiFi phone is erased (such as contacts, History, and network settings).
  - **Reset device only.** Reset the WiFi phone to its factory defaults. Network settings are saved, but all other information stored in the WiFi phone, such as contacts and the History, is erased.

---

## Advanced

From the Settings menu, choose Advanced. You should not need to change most of these settings. The Advanced menu has these options:

- **Software updates.** Check to see if a software update is available for your WiFi phone.
- **Proxy.** Set proxy and connect to Skype.
- **Host.** Set the host and connect to Skype.
- **Port.** Specify the port and connect to Skype.
- **Proxy authentication.** Set the proxy authentication.
- **User name.** Shows the user name for this WiFi phone.
- **Password.** View the password for this WiFi phone.

---

# Preferred Networks

When you connect to a wireless network, the WiFi phone remembers the network and puts it into Preferred Networks. To view or manage Preferred Networks:

1. On the Settings menu, select Preferred Networks.
2. With the soft key, select Options. The options are as follows:
  - **Add current.** Add the current network.
  - **Define new network.** Enter settings for a new network.
  - **Move up.** Move a network up toward the top of the list of preferred networks.
  - **Move down.** Move a network down toward the bottom of the list of preferred networks.
  - **Move to top.** Move a network to the top of the list.
  - **Properties.** View the network name, wireless security, and data rate.
  - **Remove network.** Remove one network from the list of preferred networks.
  - **Remove all networks.** Clears all networks from the preferred networks.
  - **Auto connect to open.** This is set to Yes by default. If there is no preferred network, then the WiFi phone tries to connect to the first open network that it locates.

---

# Connect to a Network

The WiFi phone scans for wireless networks when you turn it on. If no network is available, you can scan for the network again, or try later. See “Network” on page 28. Also see “Wireless Networks” on page 4-36.

Many wireless networks use security such as WEP or WPA-PSK. These security features encrypt data, and require you to enter a passphrase or keys before you can use the network. After you have entered the information, the WiFi phone remembers it, unless you sign out from the On/Off menu or reset the WiFi phone.

## Connect to a Network with Wireless Security

The first time that you select a wireless network with security, a message asks if you would like to try an advanced configuration.

To connect to the network:

1. With the soft key, select Advanced.
2. Select the network.
3. Select Connect.

The network authentication choices are Open, Shared, and WPA PSK. For Access Point Authentication you can disable or enable WEP security.

4. Follow the prompts to enter the passphrase or keys.



**Tip:** Passphrases and keys are case-sensitive. NETGEAR is not the same as Netgear. Use the \*a/A button to change to lowercase, uppercase, or numeric entry.



# Troubleshooting

Use the following suggestions to locate the source of a problem.

---

## Find the Problem

To make and receive calls, the WiFi phone must do the following:

1. Respond when turned on.  
If the phone does not respond, see “Charge the Battery” on page 2.
2. Find a wireless network.  
See “Wireless Networks” on page 36.
3. Connect to a wireless network.  
See “Tips for Connecting to Wireless Networks” on page 36.
4. Connect to the Internet and sign in to Skype.  
If you can connect to a network, but cannot sign in to Skype, see if the Internet connection for the network is working.

The first time you sign in with your WiFi phone it can take several minutes for your contacts to load.

---

# Wireless Networks

To use your WiFi phone, you need a good connection to a wireless network.

The WiFi phone automatically scans for wireless networks. If it does not find your network, check the following items:

- Move the WiFi phone closer to the wireless access point or router. See “Wireless Range and Interference” on page 37.
- Check the preferred network settings. The phone remembers networks that you have used in the past. See “Preferred Networks” on page 31.

## Tips for Connecting to Wireless Networks

If there is more than one network in your area, then you must know the network name. The network name is also called the Service Set Identifier (SSID). Here are some tips to help you connect to wireless networks:

- The SSID, passwords, and WEP keys are case-sensitive. NETGEAR is not the same as Netgear and A1 is not the same as a1.
- Hidden networks do not broadcast their SSID. The first time that you connect to a hidden network you must enter its SSID, which is case-sensitive.



- If you have connected to a network before, the phone remembers the settings unless you sign out or the phone is reset. You can view and manage your Preferred Networks as described in “Preferred Networks” on page 31.

## Wireless Range and Interference

Wireless networks have one or more access points or routers that send out wireless signals. The distance that the signal travels is the wireless range. Interference can block a wireless signal.

The strength and range of the wireless signal depend on the equipment used. As you move the WiFi phone away from an access point or router, you could lose your wireless connection.

The following can cause interference and prevent you from connecting to a wireless network:

- Large metal surfaces
- Microwave ovens
- 2.4-GHz cordless phones
- Aquariums or large fish tanks
- Walls built with concrete or metal



# Wireless Default Settings and Technical Specifications

Wireless Default Settings	
Wireless communication	Enabled
Wireless network name (SSID)	Any (connects to the first wireless network that responds)
Security	Disabled
Network type	Infrastructure
Transmission speed	Auto <sup>a</sup>
Country/Region	United States (varies by region)
Operating mode	802.11g and 802.11b

- a. Maximum wireless signal rate (IEEE Standard 802.11). Actual throughput will vary. Volume of network traffic, building materials, and network overhead, reduce actual data throughput rate.

### Technical Specifications

Antenna	Internal
Radio data rate	1, 2, 5.5, 6, 9, 11, 12, 18, 24, 36, 48, 54
Frequency	2.4–2.4835 GHz
Emissions	FCC, CE
Interface	USB, for charging only
Weight with battery	0.25 lbs (0.11kg)
Dimensions (W x H x D)	1.8 x 4.3 x 0.8 in (46 x 110 x 21mm)
Operating temperature	32°–104°F (0°–40°C)
Encryption	WEP 64, WEP 128, and WPA-PSK (TKIP) data encryption

# Related Documents

You may find the following online documents useful. Use the following links to read more about wireless technology.

<b>Document</b>	<b>Link</b>
Wireless Communications	<i><a href="http://documentation.netgear.com/reference/enu/wireless/index.htm">http://documentation.netgear.com/reference/enu/wireless/index.htm</a></i>
Preparing a Computer for Network Access	<i><a href="http://documentation.netgear.com/reference/enu/wsdhcp/index.htm">http://documentation.netgear.com/reference/enu/wsdhcp/index.htm</a></i>
Glossary	<i><a href="http://documentation.netgear.com/reference/enu/glossary/index.htm">http://documentation.netgear.com/reference/enu/glossary/index.htm</a></i>



# Regulatory Compliance

## **Certificate of the Manufacturer/Importer**

It is hereby certified that the WiFi phone has been suppressed in accordance with the conditions set out in the BMPT-AmtsblVfg 243/1991 and Vfg 46/1992. The operation of some equipment (for example, test transmitters) in accordance with the regulations may, however, be subject to certain restrictions. Please refer to the notes in the operating instructions.

Federal Office for Telecommunications Approvals has been notified of the placing of this equipment on the market and has been granted the right to test the series for compliance with the regulations.

## **Voluntary Control Council for Interference (VCCI) Statement**

This equipment is in the second category (information equipment to be used in a residential area or an adjacent area thereto) and conforms to the standards set by the Voluntary Control Council for Interference by Data Processing Equipment and Electronic Office Machines aimed at preventing radio interference in such residential areas.

When used near a radio or TV receiver, it may become the cause of radio interference. Read instructions for correct handling.

## **FCC**

This device complies with Part 15 of the FCC Rules. Operation is subject to the following two conditions:

This device may not cause harmful interference.

This device must accept any interference received, including interference that may cause undesired operation.

## **FCC RF Exposure Information**

**WARNING!!** Read this information before using your phone.

In August 1986 the Federal Communications Commission (FCC) of the United States with its action in Report and Order FCC 96-326 adopted an updated safety standard for human exposure to radio frequency (RF) electromagnetic energy emitted by FCC regulated transmitters. Those guidelines are consistent with the safety standard previously set by both U.S. and international standards bodies. The design of this phone complies with the FCC guidelines and these international standards. Use only the supplied or an approved antenna. Unauthorized antenna modifications, or attachments could impair call quality, damage the phone, or result in violation of FCC regulations. Do not use the phone with a damaged antenna. If a damaged antenna comes into contact with the skin, a minor burn may result. Please contact your local dealer for replacement antenna.

## **Body-Worn Operation**

This device was tested for typical body-worn operations with the back of the phone kept 1.5cm from the body. To comply with FCC RF exposure requirements, a minimum separation distance of 1.5cm must be maintained between the user's body and the back of the phone, including the antenna, whether extended or retracted. Third-party belt-clips, holsters and similar accessories containing metallic components shall not be used. Body-worn accessories that cannot maintain 1.5cm separation distance between the user's body and the back of the phone, and have not been tested for typical body-worn operations may not comply with FCC RF exposure limits and should be avoided.

For more information about RF exposure, please visit the FCC website at [www.fcc.gov](http://www.fcc.gov)

Your wireless handheld portable telephone is a low power radio transmitter and receiver. When it is ON, it receives and also sends out radio frequency (RF) signals. In August, 1996, the Federal Communications Commission (FCC) adopted RF exposure guidelines with safety levels for hand-held wireless phones. Those guidelines are consistent with the safety standards previously set by both U.S. and international standards bodies:

<ANSIC95.1> (1992) / <NCRP Report 86> (1986) / <ICIMIRP> (1996)



Those standards were based on comprehensive and periodic evaluations of the relevant scientific literature. For example, over 120 scientists, engineers, and physicians from universities, government health agencies, and industry reviewed the available body of research to develop the ANSI Standard (C95.1). Nevertheless, we recommend that you use a hands-free kit with your phone (such as an earpiece or headset) to avoid potential exposure to RF energy. The design of your phone complies with the FCC guidelines (and those standards).

Use only the supplied or an approved replacement antenna. Unauthorized antennas, modifications, or attachments could damage the phone and may violate FCC regulations.

## **RF Exposure Information**

The radio module has been evaluated under FCC Bulletin OET 65C (01-01) and found to be compliant to the requirements as set forth in CFR 47 Sections, 2.1093, and 15.247 (b) (4) addressing RF Exposure from radio frequency devices. This model meets the applicable government requirements for exposure to radio frequency waves. The highest SAR level measured for this device was 0.74 W/kg.

## **Regulatory statement (R&TTE / WLAN IEEE 802.11b & 802.11g)**

European standards dictate maximum radiated transmit power of 100mW EIRP and frequency range 2.400-2.4835GHz; In France, the equipment must be restricted to the 2.4465-2.4835GHz frequency range and must be restricted to indoor use.

## **CE Declaration of Conformity**

For the following equipment: Notebook with WLAN module

Is herewith confirmed to comply with the requirements set out in the Council Directive on the Approximation of the Laws of the Member States relating to Electromagnetic Compatibility (89/336/EEC), Low-voltage Directive (73/23/EEC) and the Amendment Directive (93/68/EEC), the procedures given in European Council Directive 99/5/EC and 89/3360EEC.

The equipment was passed. The test was performed according to the following European standards:

EN 300 328 V.1.6.1: 2004

EN 301 489-1 V.1.3.1 (2001), EN 301 489-17 V.1.2.1 (2002)

EN 50361: 2001

EN 60950-1: 2001

## **IC (WLAN)**

To prevent radio interference to the licensed service, this device is intended to be operated indoors and away from windows to provide maximum shielding. Equipment (or its transmit antenna) that is installed outdoors is subject to licensing.”

This Class B digital apparatus complies with Canada RSS-210.

Cet appareil numérique de la classe B est conforme à la norme CNR-210 du Canada

The term “IC:” before the certification/registration number only signifies that the Industry Canada technical specifications were met.

### **Canadian Department of Communications Industry Canada (IC) Notice**

This Class B digital apparatus complies with Canadian ICES-003 and RSS-210. Cet appareil numérique de la classe B est conforme à la norme NMB-003 et CNR-210 du Canada.

“To prevent radio interference to the licensed service, this device is intended to be operated indoors and away from windows to provide maximum shielding. Equipment (or its transmit antenna) that is installed outdoors is subject to licensing.”

“Pour empêcher que cet appareil cause du brouillage au service faisant l’objet d’une licence, il doit être utilisé à l’intérieur et devrait être placé loin des fenêtres afin de fournir un écran de blindage maximal. Si le matériel (ou son antenne d’émission) est installé à l’extérieur, il doit faire l’objet d’une licence.”

## Europe - EU Declaration of Conformity

Ěesky [Czech]	NETGEAR, Inc. tímto prohlašuje, že tento WiFi phone je ve shodě se základními požadavky a dalšími příslušnými ustanoveními směrnice 1999/5/ES.
Dansk [Danish]	Undertegnede NETGEAR, Inc. erklærer herved, at følgende udstyr WiFi phone overholder de væsentlige krav og øvrige relevante krav i direktiv 1999/5/EF.
Deutsch [German]	Hiermit erkläre NETGEAR, Inc., dass sich das Gerät WiFi phone in Übereinstimmung mit den grundlegenden Anforderungen und den übrigen einschlägigen Bestimmungen der Richtlinie 1999/5/EG befindet.
Eesti [Estonian]	Käesolevaga kinnitab NETGEAR, Inc. seadme WiFi phone vastavust direktiivi 1999/5/EÜ põhinõuetele ja nimetatud direktiivist tulenevatele teistele asjakohastele sätetele.
English	Hereby, NETGEAR, Inc., declares that this WiFi phone is in compliance with the essential requirements and other relevant provisions of Directive 1999/5/EC.
Español [Spanish]	Por medio de la presente NETGEAR, Inc. declara que el WiFi phone cumple con los requisitos esenciales y cualesquiera otras disposiciones aplicables o exigibles de la Directiva 1999/5/CE.
Ελληνική [Greek]	ΜΕ ΤΗΝ ΠΑΡΟΥΣΑ NETGEAR, Inc. ΔΗΛΩΝΕΙ ΟΤΙ WiFi phone ΣΥΜΜΟΡΦΩΝΕΤΑΙ ΠΡΟΣ ΤΙΣ ΟΥΣΙΩΔΕΙΣ ΑΠΑΙΤΗΣΕΙΣ ΚΑΙ ΤΙΣ ΛΟΙΠΕΣ ΣΧΕΤΙΚΕΣ ΔΙΑΤΑΞΕΙΣ ΤΗΣ ΟΔΗΓΙΑΣ 1999/5/ΕΚ.
Français [French]	Par la présente NETGEAR, Inc. déclare que l'appareil WiFi phone est conforme aux exigences essentielles et aux autres dispositions pertinentes de la directive 1999/5/CE.
Italiano [Italian]	Con la presente NETGEAR, Inc. dichiara che questo WiFi phone è conforme ai requisiti essenziali ed alle altre disposizioni pertinenti stabilite dalla direttiva 1999/5/CE.

Latviski [Latvian]	Ar šo NETGEAR, Inc. deklarā, ka WiFi phone atbilst Direktīvas 1999/5/EK būtiskajām prasībām un citiem ar to saistītajiem noteikumiem.
Lietuviø [Lithuanian]	Šiuo NETGEAR, Inc. deklaruoja, kad šis WiFi phone atitinka esminius reikalavimus ir kitas 1999/5/EB Direktyvos nuostatas.
Nederlands [Dutch]	Hierbij verklaart NETGEAR, Inc. dat het toestel WiFi phone in overeenstemming is met de essentiële eisen en de andere relevante bepalingen van richtlijn 1999/5/EG.
Malti [Maltese]	Hawnhekk, NETGEAR, Inc., jiddikjara li dan WiFi phone jikkonforma mal-tijiet essenzjali u ma provvedimenti orajn rilevanti li hemm fid-Direttiva 1999/5/EC.
Magyar [Hungarian]	Alulírott, NETGEAR, Inc. nyilatkozom, hogy a WiFi phone megfelel a vonatkozó alapvető követelményeknek és az 1999/5/EC irányelv egyéb előírásainak.
Polski [Polish]	Niniejszym NETGEAR, Inc. oświadczam, że WiFi phone jest zgodny z zasadniczymi wymogami oraz pozostałymi stosownymi postanowieniami Dyrektywy 1999/5/EC.
Português [Portuguese]	NETGEAR, Inc. declara que este WiFi phone está conforme com os requisitos essenciais e outras disposições da Directiva 1999/5/CE.
Slovensko [Slovenian]	NETGEAR, Inc. izjavlja, da je ta WiFi phone v skladu z bistvenimi zahtevami in ostalimi relevantnimi določili direktive 1999/5/ES.
Slovensky [Slovak]	NETGEAR, Inc. týmto vyhlasuje, že WiFi phone spáda základné požiadavky a všetky príslušné ustanovenia Smernice 1999/5/ES.
Suomi [Finnish]	NETGEAR, Inc. vakuuttaa täten että WiFi phone tyyppinen laite on direktiivin 1999/5/EY oleellisten vaatimusten ja sitä koskevien direktiivin muiden ehtojen mukainen.
Svenska [Swedish]	Härmed intygar NETGEAR, Inc. att denna [utrustningstyp] står i överensstämmelse med de väsentliga egenskapskrav och övriga relevanta bestämmelser som framgår av direktiv 1999/5/EG.

## SAR

For body worn operation, this phone has been tested and meets FCC RF exposure guidelines when used with an accessory that contains no metal and that positions the handset a minimum of (specified distance) from the body. Use of other accessories may not ensure compliance with FCC RF exposure guidelines.

### SAR Statement

The Netgear SHP101 has been tested for body-worn Specific Absorption Rate (SAR) compliance. The FCC has established detailed SAR requirements and has established that these requirements have been met when used at the ear and worn on the body as described in this manual. The following values are the highest SAR values:

- Maximum SAR (1g)  
Head 0.557 mW/g (2437 MHz)  
Body 0.418 MW/g (2412 MHz)
- CE Maximum SAR (10g)  
Head 0.241 W/kg (2412 MHz)  
Body 0.183 MW/g (2412 MHz)

### SAR Exposure

This device has been tested for compliance with FCC RF Exposure (SAR) limits in typical flat configurations.

In order to comply with SAR limits established in the RSS-102 & ANSI C95.1 standards, it is recommended when using a phone that the integrated antenna is positioned more than 1.5cm from your body or nearby persons during extended periods of operation. If the antenna is positioned less than 1.5cm from the user, it is recommended that the user limit the exposure time.



## Trademarks

NETGEAR is a trademark of Netgear, Inc. Skype, SkypeIn, SkypeOut and associated logos and the "S" symbol are trademarks of Skype Limited. Other brand and product names are registered trademarks or trademarks of their respective holders.

## Statement of Conditions

In the interest of improving internal design, operational function, and/or reliability, NETGEAR reserves the right to make changes to the products described in this document without notice.

NETGEAR does not assume any liability that may occur due to the use or application of the product(s) or circuit layout(s) described herein.

## Product and Publication Details

<b>Model Number:</b>	SPH101
<b>Publication Date:</b>	June 2006
<b>Product Family:</b>	WiFi phone
<b>Product Name:</b>	Skype™ WiFi Phone
<b>Home or Business Product:</b>	Home
<b>Language:</b>	English
<b>Publication Part Number:</b>	207-10161-01
<b>Publication Version Number</b>	1.0

**NETGEAR**, Inc.  
4500 Great America Parkway  
Santa Clara, CA 95054 USA



202-10139-01

**June 2006**



## Free Manuals Download Website

<http://myh66.com>

<http://usermanuals.us>

<http://www.somanuals.com>

<http://www.4manuals.cc>

<http://www.manual-lib.com>

<http://www.404manual.com>

<http://www.luxmanual.com>

<http://aubethermostatmanual.com>

Golf course search by state

<http://golfingnear.com>

Email search by domain

<http://emailbydomain.com>

Auto manuals search

<http://auto.somanuals.com>

TV manuals search

<http://tv.somanuals.com>