

MAXIM

MAX1416 Evaluation Kit/ Evaluation System

General Description

The MAX1416 evaluation kit (EV kit) is an assembled and tested circuit board that demonstrates the MAX1416 multichannel, 16-bit, sigma-delta data-acquisition system. Windows® 98/2000/XP software provides a convenient user interface to exercise the features of the MAX1416.

Order the complete evaluation system (EV system) (MAX1416EVC16) for a comprehensive evaluation of the MAX1416 using a personal computer. Order the EV kit (MAX1416EVKIT) if the 68HC16MODULE-DIP has been purchased with a previous Maxim EV system, or for custom use in other microcontroller (μ C)-based systems.

To evaluate the MAX1415, request a free sample of the MAX1415EUE. To evaluate the MX7705, request a free sample of the MX7705EUE.

MAX1416EVC16 System Component List

| PART | QTY | DESCRIPTION |
|------------------|-----|------------------------|
| MAX1416EVKIT | 1 | MAX1416 evaluation kit |
| 68HC16MODULE-DIP | 1 | 68HC16 μ C module |

| REFERENCE | QTY | DESCRIPTION |
|-----------------|-----|--------------------------------------------------------------------------------------------------------------|
| C1–C4, C10, C11 | 6 | 0.01 μ F, 10V X7R ceramic capacitors (radial leaded) |
| C5 | 1 | 0.01 μ F \pm 10%, 50V X7R ceramic capacitor (0603) Taiyo Yuden UMK107B103KZ TDK C1608X7R1H103KT |
| C6 | 1 | 4.7 μ F \pm 20%, 10V X5R ceramic capacitor (1206) Taiyo Yuden LMK316BJ475ML TDK C3216X5R1A475MT |
| C7, C8 | 2 | 22pF \pm 5%, 50V C0G ceramic capacitors (0603) TDK C1608C0G1H220J |
| C9, C12, C13 | 3 | 0.1 μ F \pm 10%, 50V X7R ceramic capacitors (0805) Taiyo Yuden UMK212BJ104KG TDK C2012X7R1H104KT |
| C14 | 1 | 1 μ F, 10V X7R ceramic capacitor (0805) TDK C2012X7R1A105K |

Windows is a registered trademark of Microsoft Corp.

Features

- ◆ Proven PC Board Layout
- ◆ Complete Evaluation System
- ◆ Convenient On-Board Test Points
- ◆ Fully Assembled and Tested

Ordering Information

| PART | TEMP RANGE | INTERFACE TYPE |
|--------------|--------------|------------------|
| MAX1416EVC16 | 0°C to +70°C | Windows software |
| MAX1416EVKIT | 0°C to +70°C | User supplied |

Note: The MAX1416 software is designed for use with the complete EV system (MAX1416EVC16). It includes a 68HC16MODULE-DIP module and a MAX1416EVKIT. If the MAX1416 evaluation software is not used, the MAX1416EVKIT board can be purchased by itself, without the μ C.

MAX1416EVKIT Parts List

| REFERENCE | QTY | DESCRIPTION |
|-----------|-----|--------------------------------------------------------------------------|
| H1 | 1 | 8-pin header |
| J1 | 1 | 2 x 20 right-angle socket |
| JU1 | 1 | 2-pin header |
| JU2 | 1 | 2-pin header |
| JU3 | 1 | 3-pin header |
| JU4 | 1 | 2-pin header |
| JU1–JU4 | 4 | Shunts |
| R1–R4 | 4 | 10 Ω \pm 5% resistors (axial leaded) |
| R5, R6 | 2 | 10 Ω \pm 5% resistors (1206) |
| TB1 | 1 | 0.200in 2-circuit screw terminal |
| TB2, TB3 | 2 | 0.200in 3-circuit screw terminal blocks |
| U1 | 1 | MAX1416EUE |
| U2 | 1 | MAX873ACSA |
| U3, U4 | 2 | MAX1840EUB |
| Y1 | 1 | 4.9152MHz crystal (HC49/US), parallel resonant, 20pF load ECS 49-20-4 |
| None | 1 | MAX1416 PC board |
| None | 1 | Software disk, MAX1416 Evaluation Kit |



Maxim Integrated Products 1

For pricing, delivery, and ordering information, please contact Maxim/Dallas Direct! at 1-888-629-4642, or visit Maxim's website at www.maxim-ic.com.

MAX1416 Evaluation Kit/ Evaluation System

Component Suppliers

| SUPPLIER | PHONE | FAX | WEBSITE |
|-------------|--------------|--------------|-----------------------|
| Taiyo Yuden | 800-348-2496 | 847-925-0899 | www.t-yuden.com |
| TDK | 847-803-6100 | 847-390-4405 | www.component.tdk.com |

Note: Please indicate that you are using the MAX1416 when contacting these component suppliers.

Quick Start

Required Equipment

Before you begin, you need the following equipment:

- MAX1416EVC16 (contains a MAX1416EVKIT board and a 68HC16MODULE-DIP)
- DC power supply, +7VDC to +12VDC at 0.25A
- DC power supply, +5VDC
- Windows 98/2000/XP computer with an available serial (COM) port
- 9-pin I/O extension cable

Procedure

Do not turn on the power until all connections are completed.

- 1) Ensure that JU1, JU2, and JU4 are closed, and that JU3 is in the 1-2 position (see Table 1 for jumper settings).
- 2) Carefully connect the boards by aligning the 40-pin header of the MAX1416 EV kit with the 40-pin connector of the 68HC16MODULE-DIP module. Gently press them together. The two boards should be flush against one another.
- 3) Connect the +5VDC power source to the MAX1416 EV kit at terminal block TB1. Observe the polarity marked on the board.
- 4) Connect the +7VDC to +20VDC power source to the μ C module at the terminal block located next to the on/off switch, along the top edge of the μ C module. Observe the polarity marked on the board.
- 5) Connect a cable from the computer's serial port to the μ C module. If using a 9-pin serial port, use a straight-through, 9-pin female-to-male cable. If the only available serial port uses a 25-pin connector, a standard 25-pin to 9-pin adapter is required. The EV kit software checks the modem status lines (CTS, DSR, DCD) to confirm that the correct port has been selected.

- 6) Install the evaluation software on your computer by running the INSTALL.EXE program on the disk. The program files are copied and icons are created for them in the Windows Start menu.
- 7) Turn on the power supply.
- 8) Start the MAX1416 program by clicking on its icon in the Start menu.
- 9) The program prompts you to connect the μ C module and to turn on its power. Slide SW1 to the ON position. Select the correct serial port, and click OK. The program automatically downloads its software to the module.
- 10) When the main window appears (Figure 1), click **Initialize** and then **Calibrate**.
- 11) Apply input signals between AIN1+ and AIN1-. Tie the unused analog input AIN2+ and AIN2- to GND. Click **Read** or check **Auto Read**. Observe the code and voltage readout on the screen.

Detailed Description of Software

The main window of the evaluation software controls the features of the MAX1416. The **Measurement** tab sheet is used to initialize, calibrate, and read data. Prior to reading the MAX1416, select the appropriate MCLK master-clock input source and click **Initialize**. The FS1 and FS0 bits in the clock register determine the data rate.

The **Initialize** button writes the clock register INT, CLKDIS, CLKDIV, CLK, and FS bits, and then writes to the setup register with FSYNC = 1. The exact value written to the clock register depends on the **MCLK input** setting, and can be viewed by bringing up the **Clock** tab sheet after initialization.

The **Calibrate** button first writes the setup register with FSYNC = 1, then writes setup with MD = 01 (self-calibration mode) and FSYNC = 0. After DRDY returns low, the MAX1416 setup register automatically returns to MD = 00 and FSYNC = 0.

MAX1416 Evaluation Kit/ Evaluation System

Evaluates: MAX1416/MAX1415/MX7705

The **Setup, Clock, Offset**, and **Gain** tab sheets provide read/write access to each of the registers. See Figures 2–5.

The **Comms and Data** (Figure 6) tab sheet provides access to the **Standby** bit. The comms registers RS2, RS1, RS0, and R/W bits are automatically set by each register's read and write buttons. The channel select bits CH1 and CH0 are determined by which channel is selected on the **Measurement** tab sheet.

Sampling

To collect data, go to the **Measurement** tab sheet and click **Sample**. Select the sample size and click **Begin Sampling**. After the samples have been collected, the data is automatically uploaded to the host and is graphed. Once displayed, the data can be saved to a file (optional).

Saving Graphs to Disk

Data in the real-time graph and in the sampled data graphs can be saved to a file (Figures 7–8). Only the raw output codes are saved, but voltages can be inferred based on the reference voltage and the maximum code value.

Evaluating Power-Down Mode

To enter standby mode, first make sure that **Auto Read** is not checked in the **Measurement** tab sheet. Then go to the **Comms and Data** tab sheet and check **power-down**, then click **write**.

Reference Voltage

The evaluation software assumes a 2.500V reference voltage, unless otherwise specified. To override this value, go to the **Measurement** tab sheet and type the new reference voltage next to **REF voltage**.

Software Listing

The EV kit software disk contains the driver source and header file. Refer to DRV1416.cpp and DRV1416.h.

Detailed Description of Hardware

The MAX1416 (U1) is a multichannel, 16-bit, sigma-delta data-acquisition system. Resistors R1–R4 and C1–C4 act as anti-aliasing filters. The MAX873 (U2) is a 2.5V reference. C14 ensures the MAX873's stability for arbitrary values of input capacitor C11. Level translators U3 and U4 allow the kit to support the 3V MAX1415, as well as the 5V MAX1416. The input signal can be applied directly to terminal blocks TB2 and TB3. C5 and C6 bypass the analog-to-digital converter's power supply. See Figure 9, and refer to the MAX1416 data sheet.

Evaluating the MAX1415

To evaluate the MAX1415, request a free sample of the MAX1415EUE and replace U1. Follow the *Quick Start* procedure, with the following exceptions:

- In step 1, leave JU1 and JU2 open.
- In step 3, apply a +3VDC power supply (instead of +5V) to TB1. Apply an external +1.225VDC differential reference between TB3 pins 3 and 2.
- After step 10, go to the software's **Measurement** tab sheet and type the new reference voltage of 1.225 next to **REF voltage**.

Evaluating the MX7705

To evaluate the MX7705, request a free sample of the MX7705EUE and replace U1. The MX7705 is similar to the MAX1415/1416 except it does not support internal clock mode (INT must always be zero).

Using an External Reference

To use an external reference, remove the shunts from JU1 and JU2, and connect a differential reference between TB3 pins 3 and 2. The evaluation software assumes a 2.500V reference voltage, unless otherwise specified. To override this value, go to the **Measurement** tab sheet and type the new reference voltage next to **REF voltage**.

Troubleshooting

Problem: No output measurement. System seems to report zero voltage, or fails to make a measurement.

Check VDD supply voltage at TB1. The EV kit requires a separate supply in addition to the supply on the microcontroller module. Check the reference voltage using a digital voltmeter. Use an oscilloscope to verify that the \overline{CS} , SCLK, and DIN waveforms are correct. If the \overline{DRDY} signal is pulsing, then the software has successfully initialized the MAX1416 and conversions have been triggered.

Problem: Cannot see MCLK waveform on oscilloscope.

When using an external crystal, the MCLKIN and MCLKOUT nodes are very sensitive to extra load capacitance. Connecting a typical 10x scope probe effectively doubles the load capacitance from 20pF to 40pF, which can slow down or even halt oscillation. When using the internal oscillator (clock register INT = 1 and CLKDIS = 0), the oscillator signal is visible on the MCLKOUT pin. In this mode, MCLKOUT can be measured using a typical 10x scope probe.

MAX1416 Evaluation Kit/ Evaluation System

Problem: Internal oscillator does not work.

The internal-oscillator mode is a feature of the MAX1416/MAX1415 only, and is not supported on the MX7705. The MX7705 requires an external clock, and can only be used with INT = 0. To observe the internal oscillator driving the MCLKOUT pin, U1 must be a MAX1416 or MAX1415, and the clock register must have INT = 1 and CLKDIS = 0.

Problem: Measurements are erratic or unstable or there is poor accuracy.

Check the reference voltage using a digital voltmeter. Use an oscilloscope to check for noise. When probing for noise, keep the oscilloscope ground-return lead as short as possible, preferably less than 1/2 in (10mm).

Problem: Unacceptable errors when measuring a transducer.

Although most signal sources can be connected directly to the MAX1416's analog input, some high-impedance signal sources may require using the internal input buffer (BUF = 1).

Problem: PDA hot-sync software or other device software interferes with EV kit software.

COM ports can only be used by one device at a time. Disable PDA hot-sync manager.

Table 1. Jumper Functions

| JUMPER | SHUNT POSITION | FUNCTION |
|--------|----------------|---------------------------------------------------------------------------|
| JU1 | Closed* | U2 (MAX873) supplies REF+ reference voltage |
| | Open | REF+ must be externally connected |
| JU2 | Closed* | REF- connects to ground at U2 |
| | Open | REF- must be externally connected |
| JU3 | 1-2* | MCLKIN connects to crystal Y1 |
| | Open | MCLKIN is not connected |
| | 2-3 | MCLKIN connects to ground (MAX1416/MAX1415 internal-oscillator mode only) |
| JU4 | Closed* | MCLKOUT drives crystal Y1 |
| | Open | MCLKOUT is not connected (MAX1416/MAX1415 internal-oscillator mode only) |

*Default configuration

QSPI is a trademark of Motorola, Inc.

MAX1416 Evaluation Kit/ Evaluation System

Evaluates: MAX1416/MAX1415/MX7705

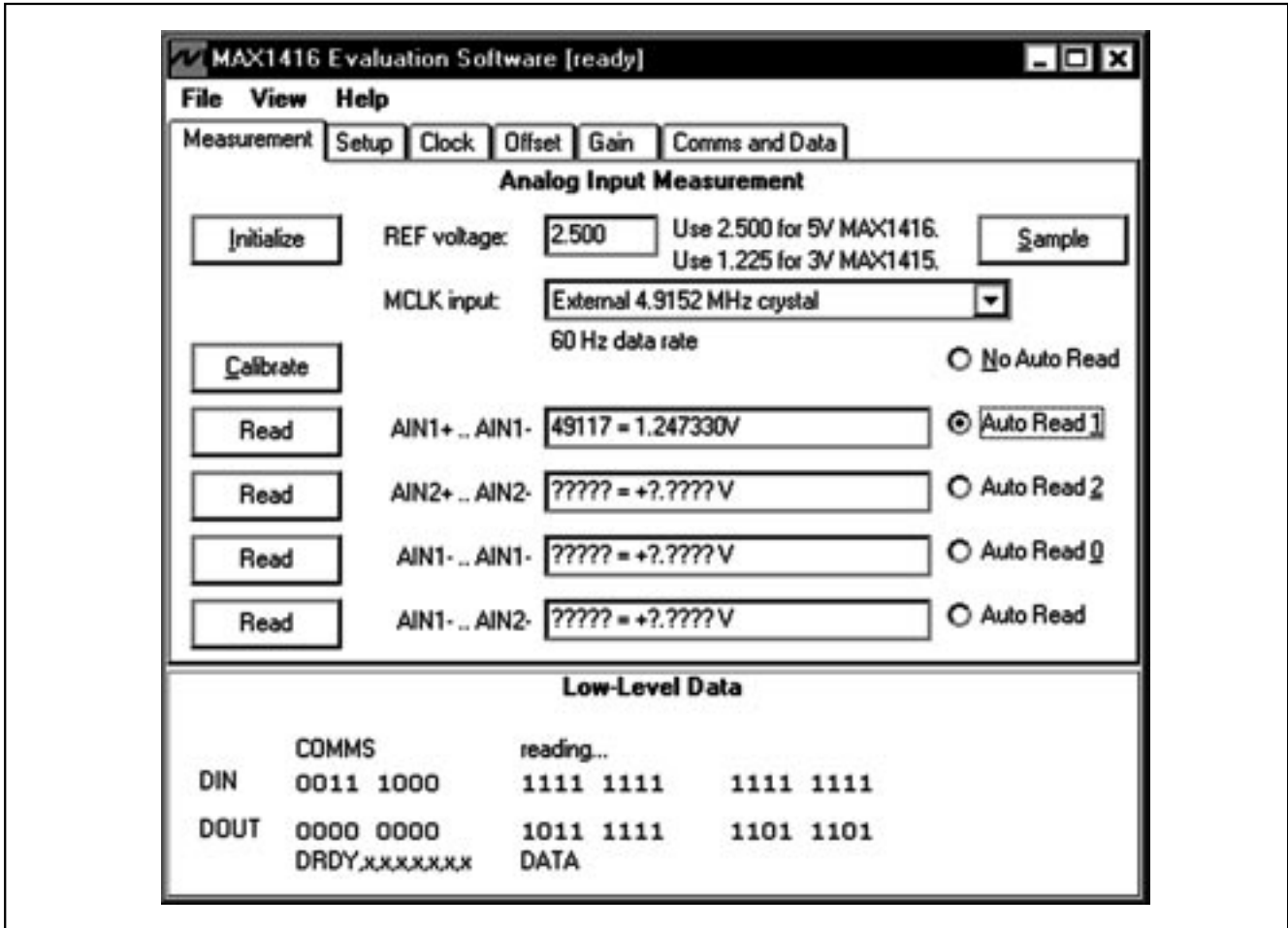


Figure 1. MAX1416—Main Window of the Evaluation Software—Measurement Tab Sheet

MAX1416 Evaluation Kit/ Evaluation System

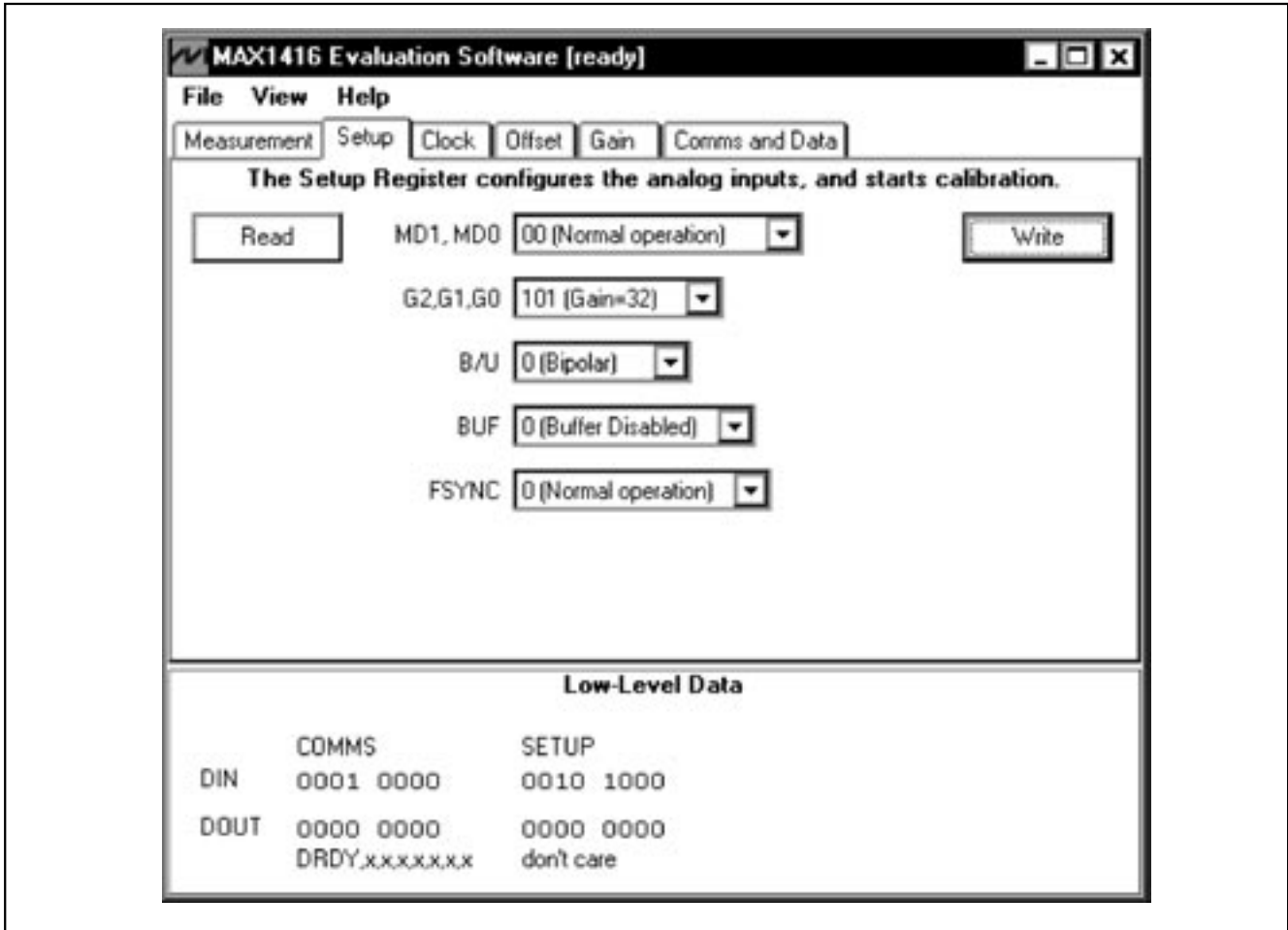


Figure 2. MAX1416—Main Window of the Evaluation Software—Setup Tab Sheet

MAX1416 Evaluation Kit/ Evaluation System

Evaluates: MAX1416/MAX1415/MX7705

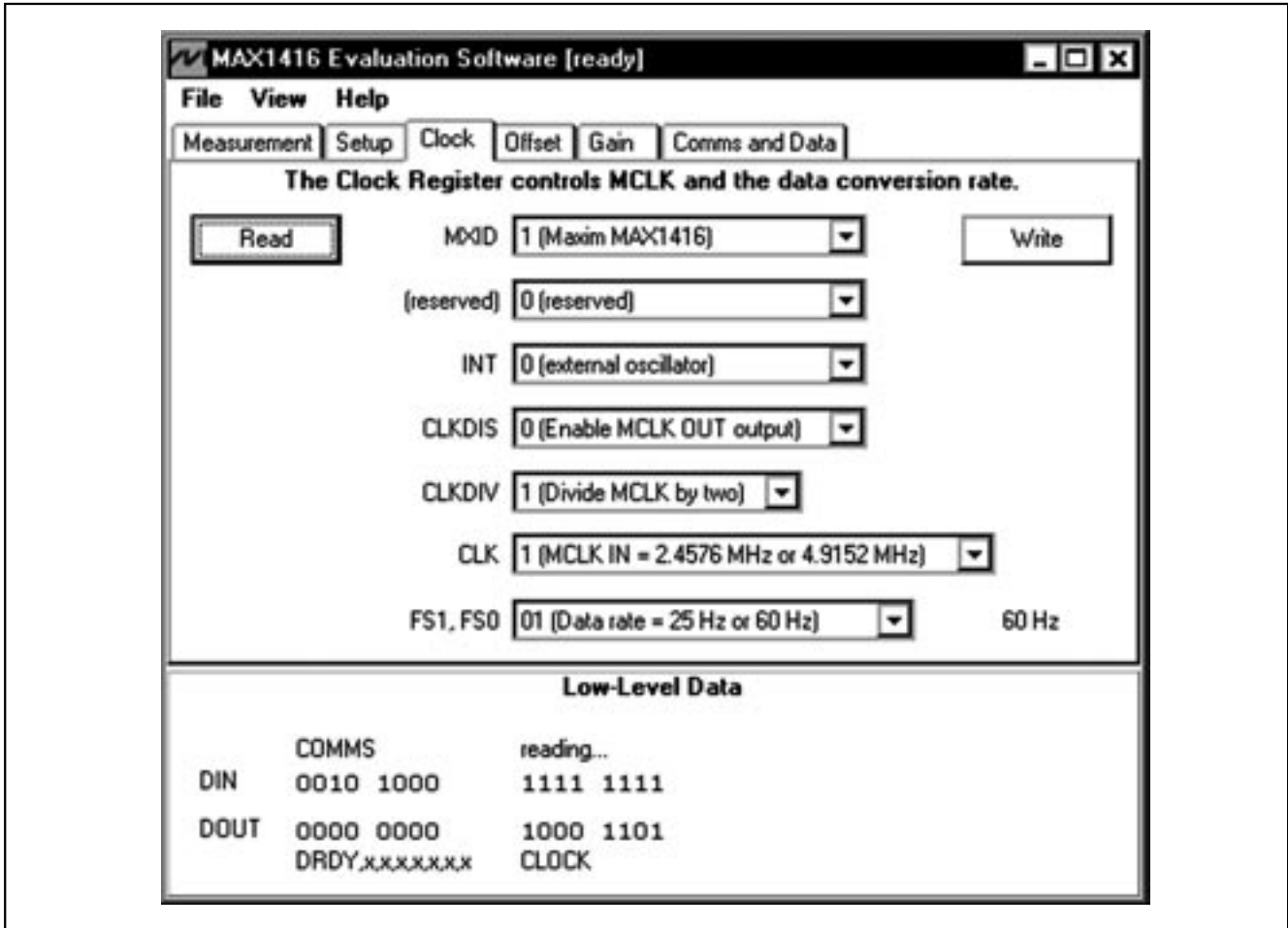


Figure 3. MAX1416—Main Window of the Evaluation Software—Clock Tab Sheet

MAX1416 Evaluation Kit/ Evaluation System

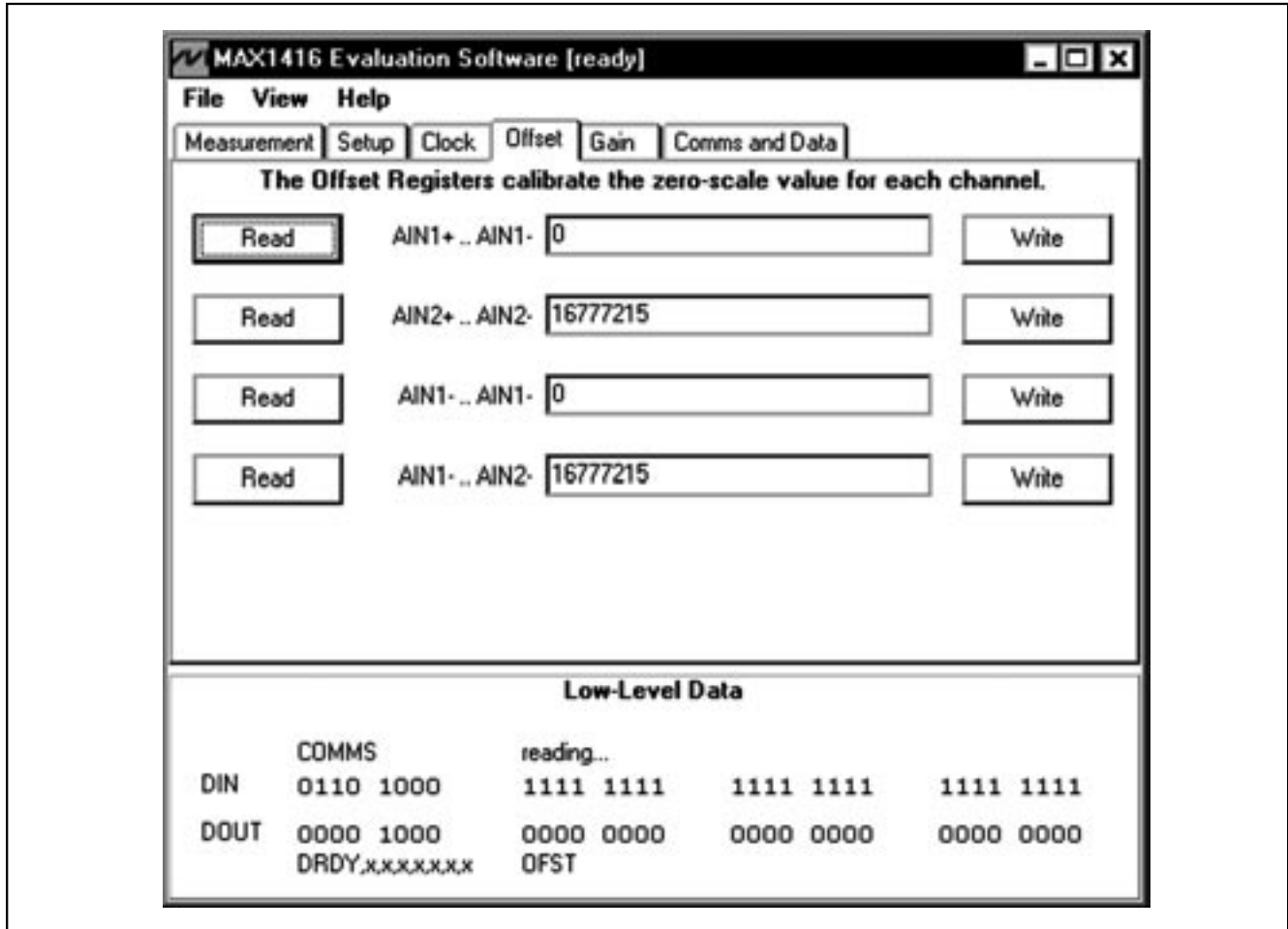


Figure 4. MAX1416—Main Window of the Evaluation Software—Offset Tab Sheet

MAX1416 Evaluation Kit/ Evaluation System

Evaluates: MAX1416/MAX1415/MX7705

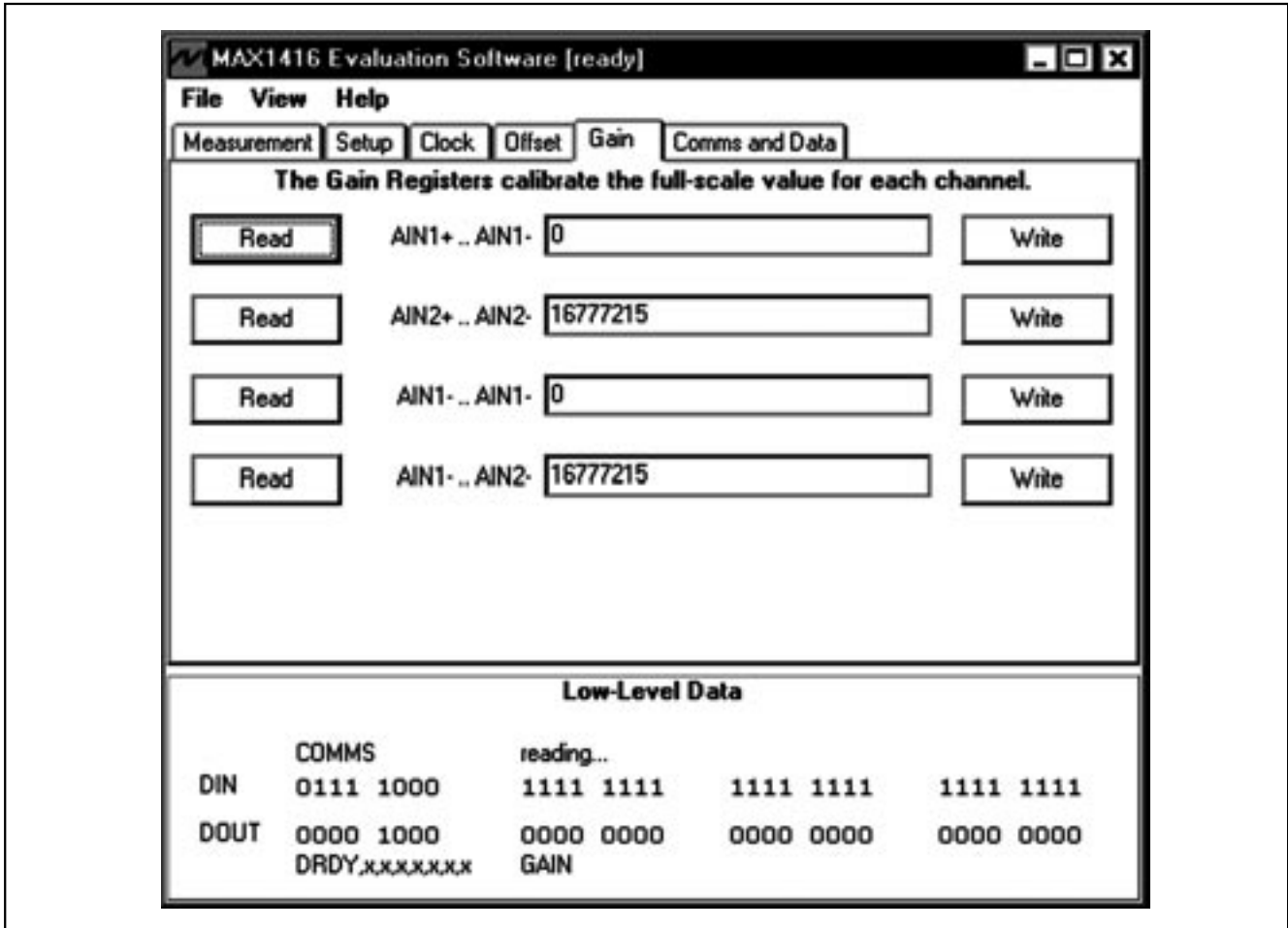


Figure 5. MAX1416—Main Window of the Evaluation Software—Gain Tab Sheet

MAX1416 Evaluation Kit/ Evaluation System

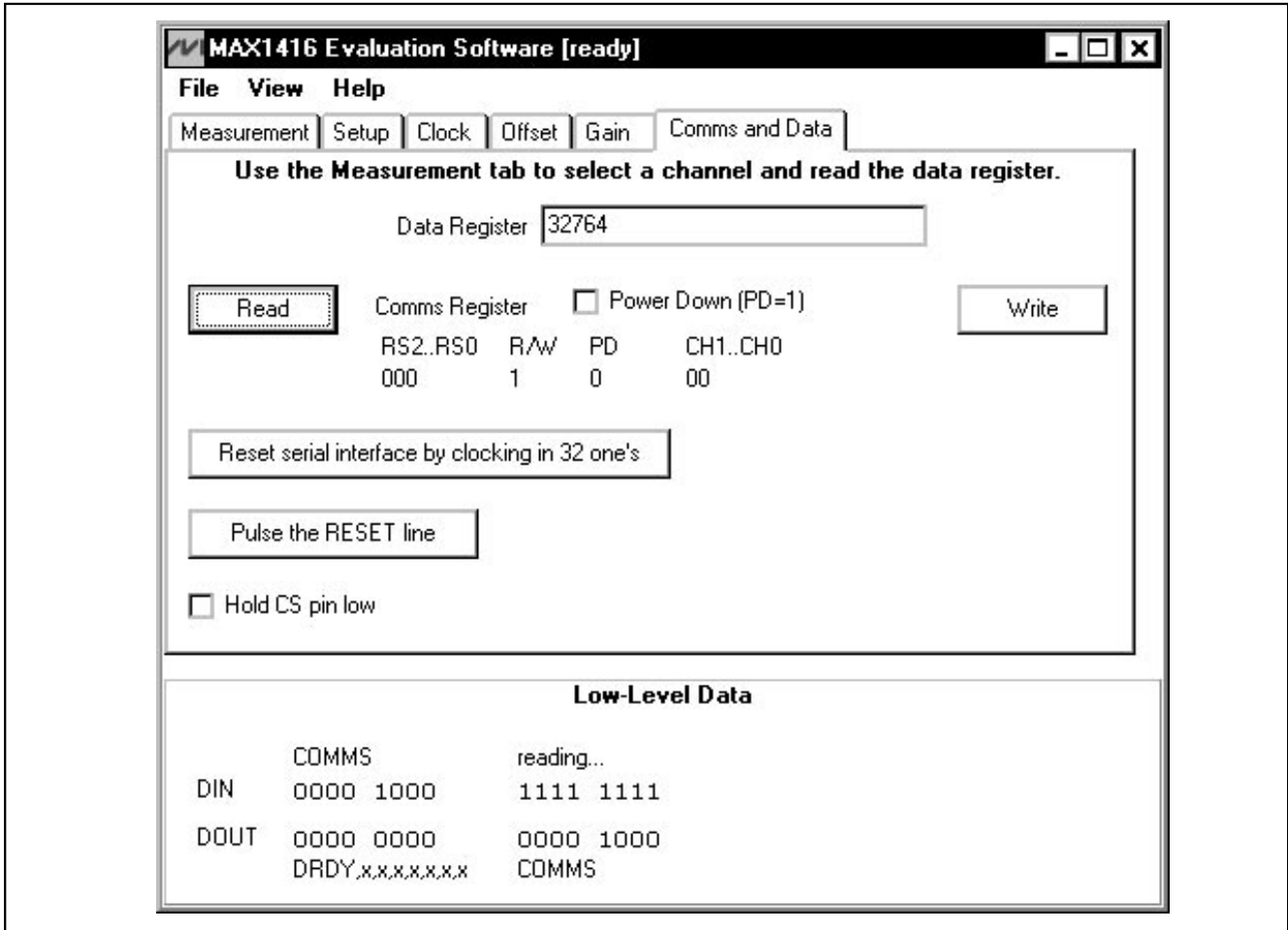


Figure 6. MAX1416 —Main Window of the Evaluation Software—Comms and Data Tab Sheet

MAX1416 Evaluation Kit/ Evaluation System

Evaluates: MAX1416/MAX1415/MX7705

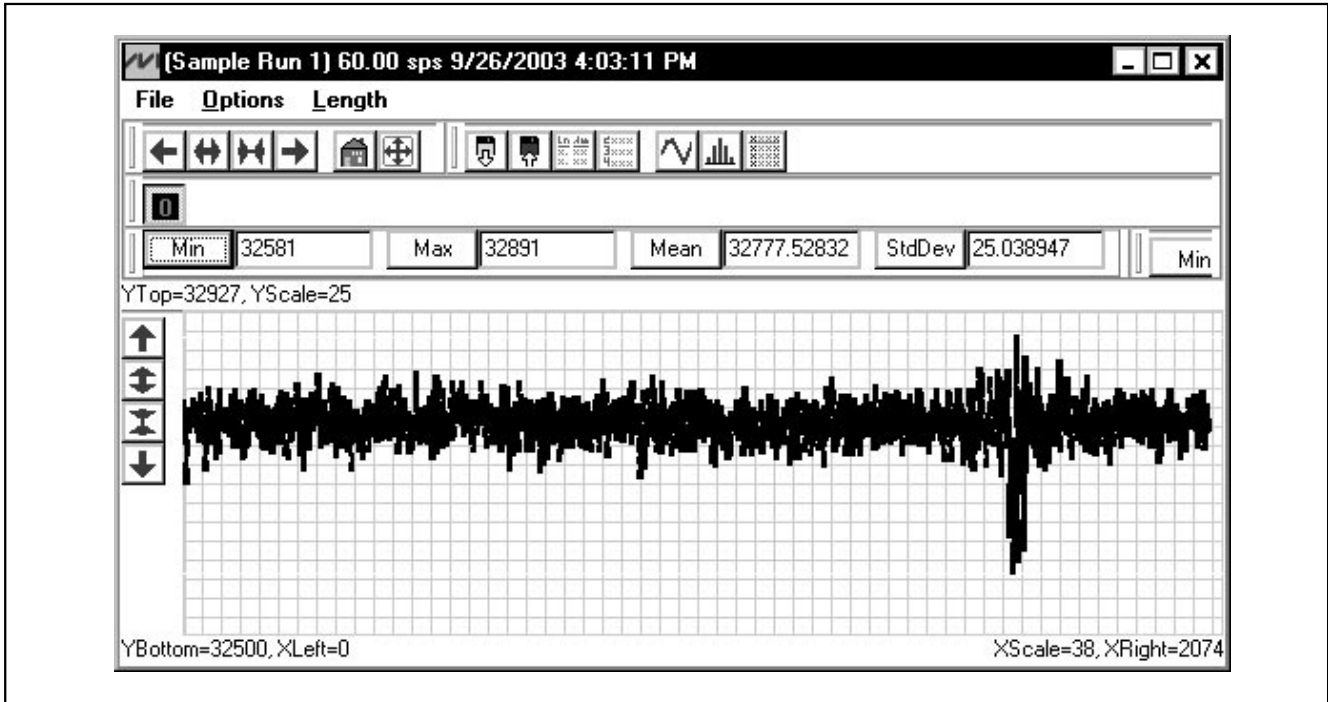


Figure 7. MAX1416—Saving Graphs to Disk

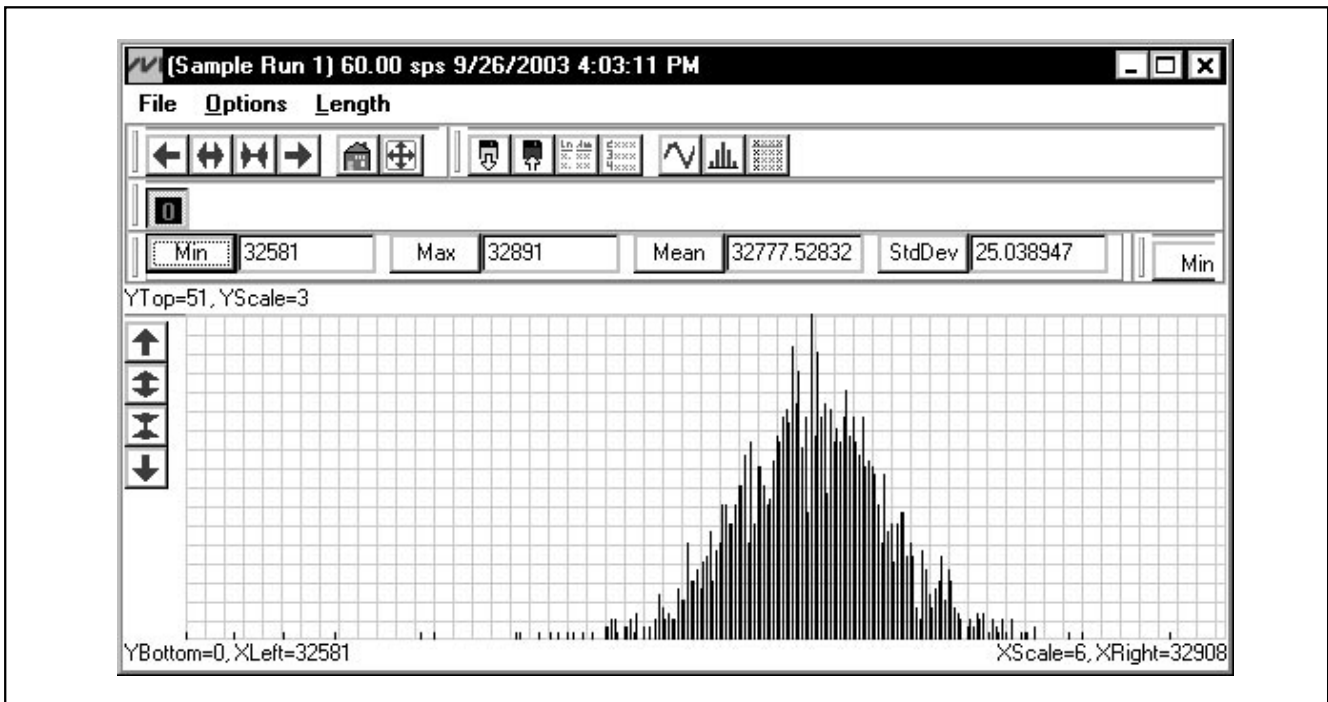


Figure 8. MAX1416—Saving Graphs to Disk

MAX1416 Evaluation Kit/ Evaluation System

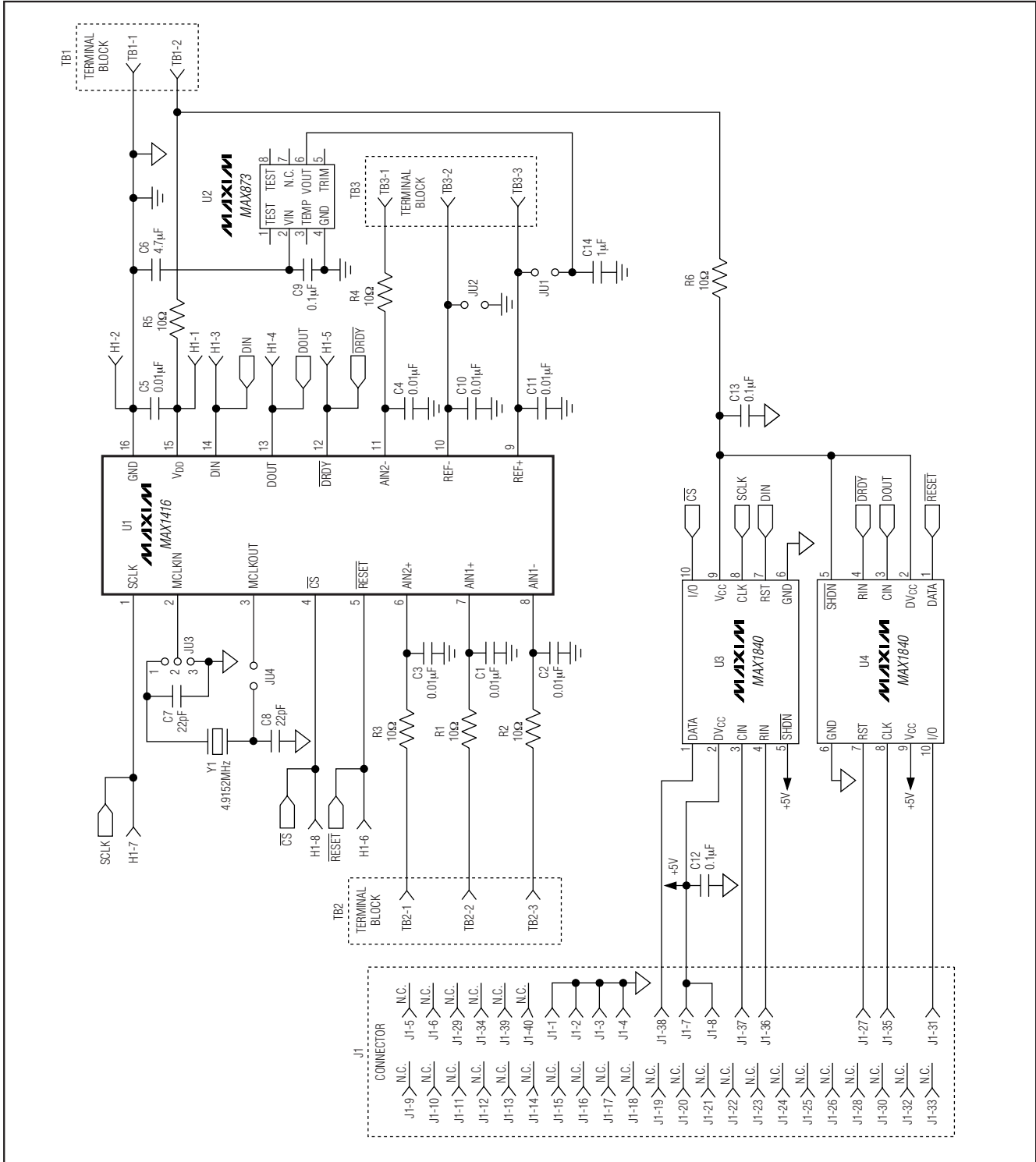


Figure 9. MAX1416 EV Kit Schematic

MAX1416 Evaluation Kit/ Evaluation System

Evaluates: MAX1416/MAX1415/MX7705

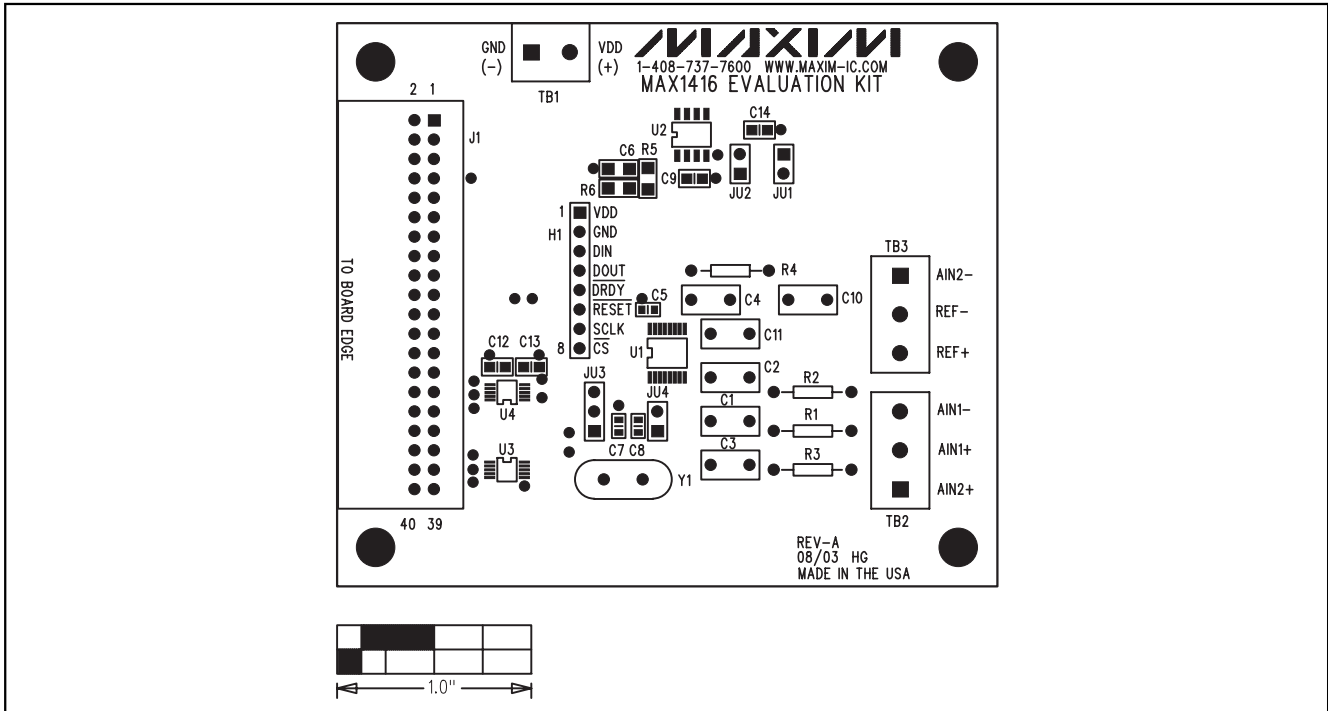


Figure 10. MAX1416 EV Kit Component Placement Guide—Component Side

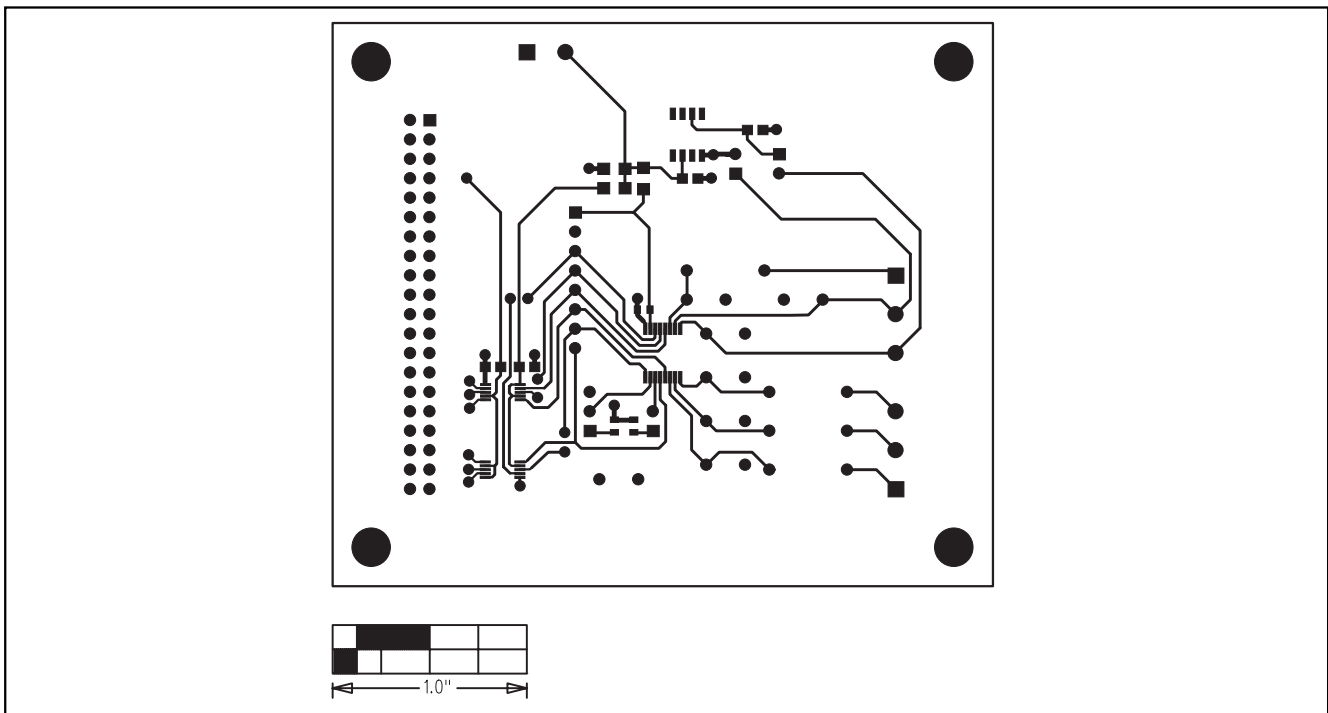


Figure 11. MAX1416 EV Kit PC Board Layout—Component Side

MAX1416 Evaluation Kit/ Evaluation System

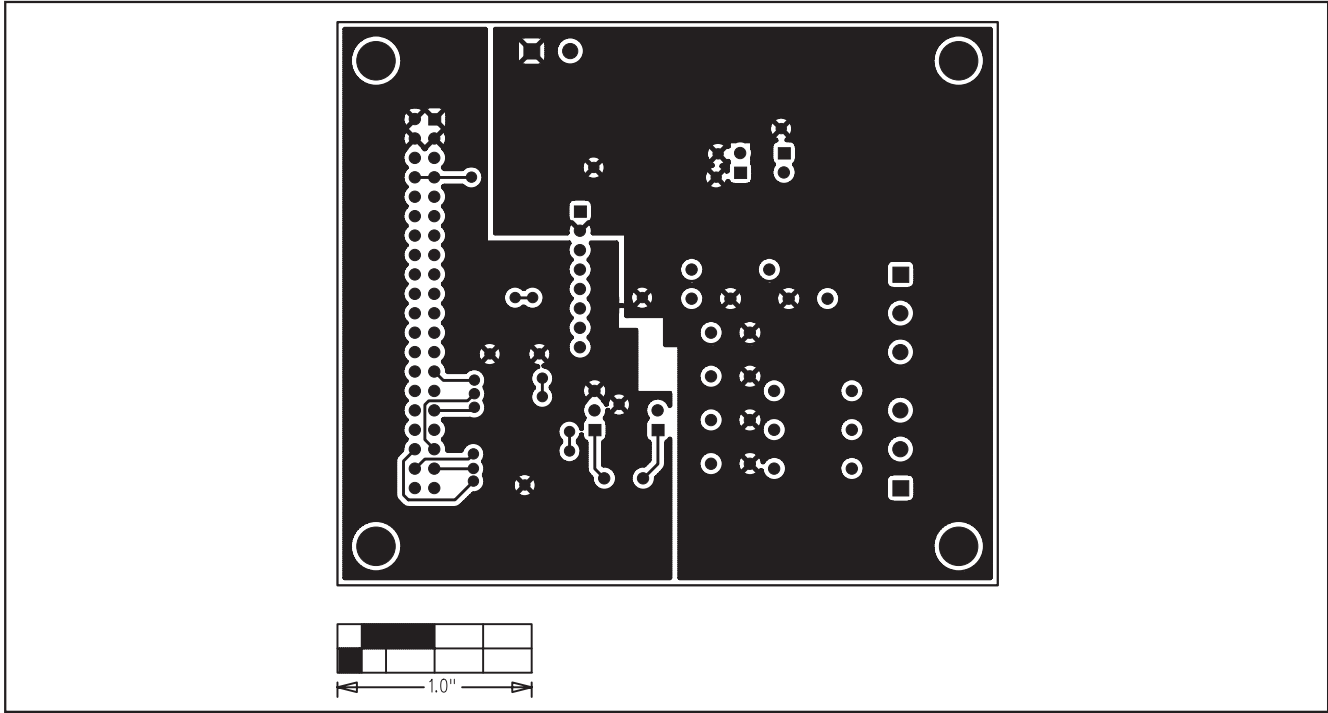


Figure 12. MAX1416 EV Kit PC Board Layout —Solder Side

Maxim cannot assume responsibility for use of any circuitry other than circuitry entirely embodied in a Maxim product. No circuit patent licenses are implied. Maxim reserves the right to change the circuitry and specifications without notice at any time.

14 _____ **Maxim Integrated Products, 120 San Gabriel Drive, Sunnyvale, CA 94086 408-737-7600**

© 2003 Maxim Integrated Products

Printed USA

MAXIM is a registered trademark of Maxim Integrated Products.

Free Manuals Download Website

<http://myh66.com>

<http://usermanuals.us>

<http://www.somanuals.com>

<http://www.4manuals.cc>

<http://www.manual-lib.com>

<http://www.404manual.com>

<http://www.luxmanual.com>

<http://aubethermostatmanual.com>

Golf course search by state

<http://golfingnear.com>

Email search by domain

<http://emailbydomain.com>

Auto manuals search

<http://auto.somanuals.com>

TV manuals search

<http://tv.somanuals.com>