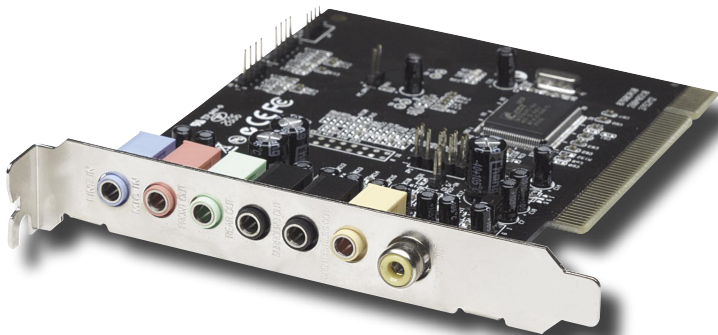


# PCI SOUND CARD USER MANUAL

MODEL 175357



 **MANHATTAN**

Download from [Www.Somanuals.com](http://www.Somanuals.com). All Manuals Search And Download. MAN-175357-UM0107-01

Thank you for purchasing the MANHATTAN® PCI Sound Card, Model 175357.

Providing a higher level of quality sound for up to a 7.1-channel format, it's ideal for upgrading existing computer audio, allowing you to fully enjoy movies, games and other multimedia experiences. Follow the instructions in this manual for easy installation and enjoy these quality features:

- Built-in 32-Ohm earphone buffer
- Support for Dolby Digital EX, DTS ES, HRTF 3D positional audio, DirectMusic, DirectSound 3D and A3D interfaces
- Full duplex 96 kHz / 24-bit playback and 48 kHz / 16-bit recording
- Plug and Play ability
- Lifetime Warranty

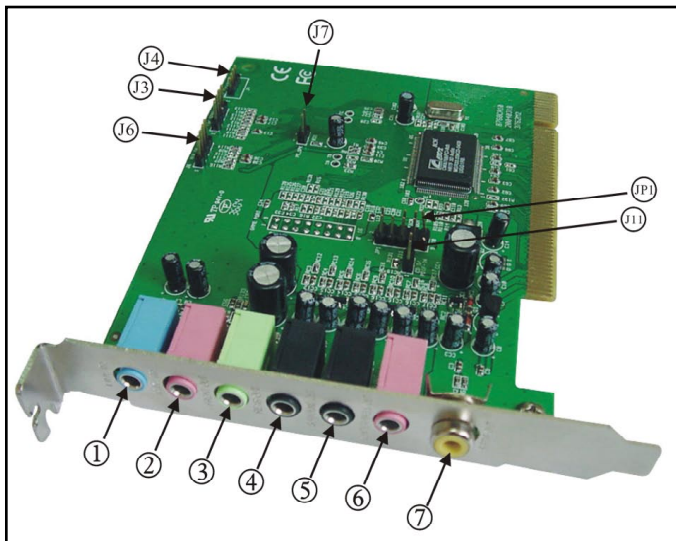
Package Contents:

- PCI Sound Card, 7 Channel
- User manual
- Driver CD

## CONNECTIONS

**NOTE:** To avoid conflicts, it is recommended that any previously installed sound card and drivers be removed prior to installing this 7.1 Channel Sound Card. If previously installed drivers are not removed, this card may not function properly. If your computer has on-board sound, it needs to be disabled on the motherboard.

Insert the PCI Sound Card in an available PCI slot on your computer. Fasten the card to the case using a screw. External (1-7) and internal jacks/connections are explained below.



Jack/Connector	Function
1. Line In (blue)	This is a stereo line-level input that can be used to record into an audio recording program.
2. Mic In (pink)	This allows you to connect a mono microphone for recording, videophone or voice recognition applications.
3. Front Out (green)	This jack should connect to the powered left and right speakers, located to the left and right of your computer monitor. If you have just a two-speaker stereo setup, this is the jack to use. You can also plug a pair of stereo headphones into this jack.
4. Rear Out (black)	This line-level output should be connected to powered left and right surround speakers. These speakers should be located to your left and right sides, just behind your head.
5. Surround Out (black)	This line-level output connects to powered left and right center surround channel speakers. These speakers should be located directly behind you as you are looking at your computer monitor.
6. Center/Subwoofer (orange)	This line-level output connects to powered center and subwoofer speakers. The center channel speaker should be directly above or below your monitor; the subwoofer can go just about anywhere it will fit in a room.
7. S/PDIF Out	The Digital Output jack is an S/PDIF coaxial output. You can use an RCA cable to connect this to a digital recorder, mixer or surround receiver. A 75-Ohm digital coaxial cable is required for this type of connection.
J6	Aux-in
J3	Analog CD/IN Port(Signals: L-G-G-R)
J4	Analog CD/IN Port(Signals: G-R-G-L)
J7	PCSPK-in
J11	CD-SPDIF IN
JP1	OPTICAL SPDIF- I/O

## DRIVER INSTALLATION

1. Start your computer. Windows will detect the sound card and display either "PCI Multimedia Audio Device" (for Windows 98SE/Me, right top) or "Multimedia Audio Controller" (for Windows 2000/XP, right bottom). Click "Cancel" to cancel the driver installation at this time. The driver for this device will be installed in the next step.
2. Place the driver CD into the CD-ROM drive. Click the "Start" button on the taskbar, then click "Run." Enter "D:\SOUND\CMedia8768\setup.exe" (assuming the CD-ROM drive is labeled as "D").
3. Follow any on-screen instructions to complete the software installation.
4. Restart your system.
5. Once you have rebooted the computer, this 7.1 Channel Sound card is ready to be used.



# SPECIFICATIONS

## Standards

- PCI Specification, Rev 2.2
- ACPI compliant

## General

- Ports  
External: line-in, microphone-in, front-out, rear-out, surround-out 1x center/bass-out and S/PDIF-out  
Internal: aux-in, analog CD-in (Sony), analog CD-in (Panasonic), PC speaker-in, CD SPDIF-in and optical SPDIF-I/O
- C-MEDIA 8768 chipset
- Full duplex 8Ch DAC / 2Ch ADC
- 16-bit duplex CODEC
- SPDIF transmitter supports 44.1 kHz / 48 kHz / 96 kHz sample rate and 16- and 24-bit resolution
- PCI Plug and Play bus interface
- 24-bit PCI Bus Master
- ACPI and PCI PMI support
- Multi-channel AC Link supported alternatively

- CE level SNF: -100 dB
- 32-bit PCI Bus

## Environmental

- Overall dimensions: 13.4 x 12.1 x 2.2 cm (5.27 x 4.8 x 0.86 in.)
- Weight: 85 g (3 oz.)

## System Requirements

- PC Intel Celeron 350 MHz or AMD K6II 500 MHz or better
- 128 MB RAM
- DirectX 8.1 or above
- Windows 98SE/Me/2000/XP
- CD-ROM drive

## Package Contents

- 7 Channel PCI Sound Card
- User manual
- Driver CD



**[www.manhattan-products.com](http://www.manhattan-products.com)**

Are you completely satisfied with this product?  
Please contact your MANHATTAN® dealer with comments or questions.

Copyright © MANHATTAN

All products mentioned are trademarks or registered trademarks of their respective owners.



## Free Manuals Download Website

<http://myh66.com>

<http://usermanuals.us>

<http://www.somanuals.com>

<http://www.4manuals.cc>

<http://www.manual-lib.com>

<http://www.404manual.com>

<http://www.luxmanual.com>

<http://aubethermostatmanual.com>

Golf course search by state

<http://golfingnear.com>

Email search by domain

<http://emailbydomain.com>

Auto manuals search

<http://auto.somanuals.com>

TV manuals search

<http://tv.somanuals.com>