

# SERVICE INSTRUCTIONS

Part No. 037407

www.keatingofchicago.com

**KEATING**  
OF CHICAGO, INC.®

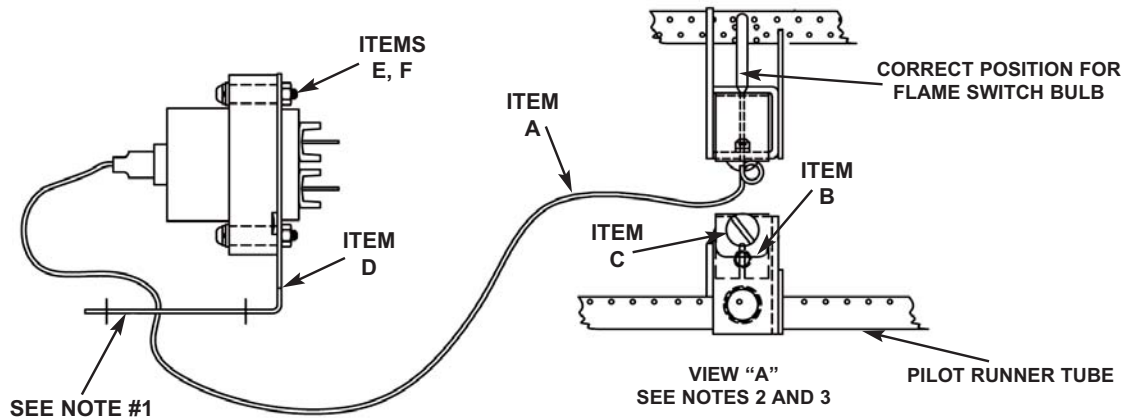
1-800-KEATING

## FLAME SWITCH REPLACEMENT KIT

Part # 037406

Your kit includes:

ITEM NO.	PART NO.	QUANTITY	DESCRIPTION
A	037397	1	FLAME SWITCH
B	055599	1	FLAME SWITCH CLIP
C	017744	1	SCREW 8-32 X 1/4 PAN
D	012833	1	FLAME SWITCH BRACKET
E	009081	2	NUT 4-36 HEX
F	005460	2	SCREW 4-36 X 7/8 PAN



1.) Remove old flame switch and bracket located inside control panel. (Retain hardware). Assemble flame switch item A to bracket item D with items E and F. Slide bulb end of flame switch through center hold in item D flame switch bracket and through hole located in control panel. If needed, use a letter "n" drill to open hole. Reassemble to control panel with retained hardware.

2.) Remove old flame switch and clip (bulb end) and replace with new flame switch item A (as shown in view "A".)

3.) Insert flame switch clip item B as shown in view "A." Secure with screw item C.

## Free Manuals Download Website

<http://myh66.com>

<http://usermanuals.us>

<http://www.somanuals.com>

<http://www.4manuals.cc>

<http://www.manual-lib.com>

<http://www.404manual.com>

<http://www.luxmanual.com>

<http://aubethermostatmanual.com>

Golf course search by state

<http://golfingnear.com>

Email search by domain

<http://emailbydomain.com>

Auto manuals search

<http://auto.somanuals.com>

TV manuals search

<http://tv.somanuals.com>