

JVC

BEFORE OPERATION

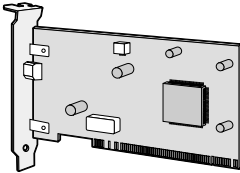
AVANT DE COMMENCER
ANTES DE LA OPERACION

GV-DV1000

ENGLISH

FRANÇAIS

CASTELLANO



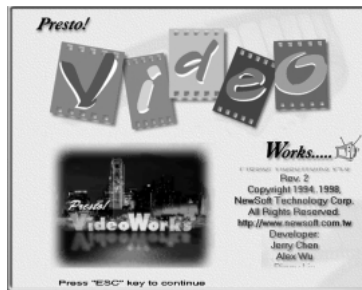
DV Capture Board



Video Navigator



PhotoSuite SE



VideoWorks

IMPORTANT**TO CUSTOMERS:****MAKE SURE TO READ THIS CAREFULLY BEFORE OPENING THE SEALED SOFTWARE PACKETS**

Thank you for purchasing our product. In order to start using the software program enclosed, you are required to accept the terms and conditions of the agreement as provided below.

Software License Agreement

This is a legal agreement between you (either an individual or an entity) and Victor Company of Japan, Limited (JVC). By opening the sealed software packages and/or by using the Program, you are agreeing to be bound by the terms of this Agreement. Should you not agree to the terms hereof, return the unopened software packets and the accompanying items to the place where you obtained them.

1. GRANT OF LICENSE

This License Agreement (Agreement) permits you to use the software program (Program) enclosed in this package and/or the accompanying written material (e. g. printed manuals). Although you are also granted license to load the Program into temporary memory (i. e. RAM) or install the Program once into permanent memory (e. g. hard disk, CD-R, or other storage device) of one (1) computer system, you are strictly prohibited to install the Program on a network server for the sole purpose of internal distribution.

2. COPYRIGHT

Not with standing the provision of Article 1 hereof, any copyright in the Program is owned exclusively by JVC and is protected by the Japanese copyright law, copyright laws of other countries, as applicable, and relevant provisions under international treaties including the Berne Convention for the Protection of Literary and Artistic Works, as amended, and the Universal Copyright Convention, as amended. Therefore, you must treat the Program like any other copyrighted material except that you may either (a) make one (1) copy of the Program solely for your personal backup or archival purposes, or (b) transfer the Program to a single hard disk, provided that you keep the original solely for your personal backup or archival purposes.

3. RESTRICTION ON THE PROGRAM

You may not reverse engineer, decompile, disassemble, revise or modify the Program, except to the extent that such restriction is expressly prohibited by applicable law. JVC and its distributors and dealers shall not be liable for any claims or defects etc. arising out of or in connection with such prohibited activities as indicated in this Agreement.

4. OTHER RESTRICTIONS

You may not rent, lease or transfer the Program to any third party nor let such a party use the Program.

5. LIMITED WARRANTY

JVC warrants that any media in which the Program is embodied (e.g. floppy discs, CD-ROM, etc.) are free from any defects in materials and workmanship for a period of thirty (30) days from the date of your purchase and that any hardware accompanying the Program is also free from defects to the extent provided in the attached Warranty Form. JVC's entire liability and your exclusive remedy in connection with the Program shall be, at JVC's option, either (a) return of the price paid, or (b) replacement of defective Program media.

6. DISCLAIMER OF WARRANTIES

EXCEPT FOR THE EXPRESS WARRANTIES STATED HEREIN AND TO THE EXTENT PERMITTED BY APPLICABLE LAW, JVC AND ITS SUPPLIERS DISCLAIM ANY OTHER WARRANTIES, EITHER EXPRESS OR IMPLIED, INCLUDING BUT NOT LIMITED TO IMPLIED WARRANTIES OF MERCHANTABILITY AND FITNESS FOR A PARTICULAR PURPOSE IN REGARD TO THE PROGRAM AND THE ACCOMPANYING PRINTED MATERIALS.

7. LIMITED LIABILITY

TO THE EXTENT PERMITTED BY APPLICABLE LAW, IN NO EVENT SHALL JVC AND ITS SUPPLIERS BE LIABLE FOR ANY INDIRECT, SPECIAL, INCIDENTAL OR CONSEQUENTIAL DAMAGES WHATSOEVER, REGARDLESS OF THE FORM OF ACTION WHETHER IN CONTRACT, TORT, STRICT PRODUCT LIABILITY OR OTHERWISE (INCLUDING BUT NOT LIMITED TO DAMAGES FOR LOSS OF PROFITS, BUSINESS INTERRUPTION, LOSS OF BUSINESS INFORMATION OR ANY OTHER PECUNIARY LOSS) ARISING OUT OF OR IN CONNECTION WITH THE USE OF OR INABILITY TO USE THE PROGRAM, EVEN IF JVC HAS BEEN ADVISED OF THE POSSIBILITY OF SUCH DAMAGES.

Victor Company of Japan, Limited

JVC SOFTWARE LICENSE AGREEMENT	2
TECHNICAL SUPPORT FOR REGISTERED USER	5
User Registration Method	5
NOTICE FOR USERS	7
INSTALLING DV CAPTURE BOARD	8
INSTALLING DV CAPTURE DRIVERS	10
For WINDOWS® 98	10
For WINDOWS® 95 VERSION 4.00.950B or later	12
For WINDOWS® 95 VERSION 4.00.950 or 4.00.950A	14
CONNECTING AND TROUBLESHOOTING	16
Connecting DV Device	16
Troubleshooting for DV Capture Board	17
For WINDOWS® 98 (p. 10~11)	17
For WINDOWS® 95 (p. 12~15)	17
INSTALLING VIDEO NAVIGATOR	18
Preparation	18
Installing Video Navigator	18
STARTING UP VIDEO NAVIGATOR	19
Preparation	19
FINISHING VIDEO NAVIGATOR	19
INSTALLING PHOTOSUITE SE	20
Installing PHOTOSUITE SE	20
INSTALLING VIDEOWORKS	21
Installing VIDEOWORKS	21
INSTALLING ACROBAT READER	22
Installing ACROBAT READER	22
STARTING UP AND FINISHING	23
Starting up VIDEOWORKS	23
Finishing VIDEOWORKS	23
IMPORTING IMAGES INTO VIDEOWORKS	24
Preparation	24

To enable the technical support of each company, perform the user registration according the below table.

User Registration Method

Product Name	Support company	Registration Method	Remarks
Video Navigator	JVC	Not required.	See JVC Software License Agreement. (p. 2)
Adaptec DV Capture Board	MGI	Mail the MGI software user registration post card.	See Adaptec Software License Agreement. (attached sheet) For repair of the board see Repair of Adaptec DV Capture Board in below.
Adaptec Driver (program)	MGI	Mail the MGI software user registration post card.	See MGI Software Corp, Software License Agreement. (attached sheet)
VideoWorks	NewSoft	Not required.	See MGI Software Corp, Software License Agreement. (attached sheet)
MGI PhotoSuite SE	MGI	Mail the MGI software user registration post card.	See MGI Software Corp, Software License Agreement. (attached sheet)

- Repairs for the Adaptec DV capture board: Please consult the MGI support center for repairs of the Adaptec DV capture board. Subject to the conditions stated hereby, MGI Software Corp. guarantees for this equipment only against defects in workmanship for the period of 5 years from the date of purchase. No charge will be made during this period for labor or for replacement parts for the Adaptec DV capture board. You have to represent the receipt proving the purchase of this product including the dealer's name and address with your claim.

This guarantee excludes:

- 1) Alternations or adjustments made to the equipment.

- 2) All damages caused through the accident, misuse, wear and tear and neglect.
- 3) Error on use by connecting this product with other devices.
- 4) Damages caused by fire, moisture, natural disasters or incorrect voltage.

Technical Support

Please inform the technical support of each corporation in the next page of your question for each product. Please acknowledge beforehand that it may require longer time for some questions.

JVC Support for:

Phone: 1-800-252-5722 (only in U.S.A)

Adaptec and MGI Support for:**North America (Canada)**

Address: MGI Software Corp.
40 West Wilmot Street
Richmond Hill, Ontario
L4R 1H8
Canada

Phone: 1-905-764-7291
e-mail: support@mgisoft.com

Europe (Holland)

Phone: +31-20-430-3026
Fax: +31-20-430-3024

Asia/Pacific (Australia)

Address: Support Group Services
Ground Floor
14 Spink Street
Gardenvale Vic 3186

ATTN: MGI Technical Support Australia
Phone: 61-3-9929-9735
Fax: 61-3-9399-9523
e-mail: techsup@supportgroup.com.au

NewSoft Support for:**North America(U.S.A)**

Technical Support Hotline:
Please e-mail: tech@newssoftinc.com or
call (510) 445-8616
www.newssoftinc.com

Europe**UK**

The Software Centre
East Way
East Mill Industrial Estate
Ivybridge
Devon, PL21 9PE
United Kingdom
Tel: (44) 1752-201148
Fax: (44) 1752-894833

France

Info Trade Centre
d'activités de l'Ourcq 45
rue Delizy 93692
Pantin
France
Tel: (33) 1-4810-7550
Fax: (33) 1-4810-7555

Asia/Pacific (Taiwan, R.O.C.)

9F, NO68
Sec. 3, Nankig E. Rd.
Taipei
Taiwan, R.O.C.
Tel: (886) 2-2517-0750
Fax: (886) 2-2517-0760
support@newssoft.com.tw
www.newssoft.com.tw

JVC cannot answer questions regarding basic operation of your PC, or questions regarding specifications or performance of the products for Adaptec, MGI and Newssoft.

When contacting the technical support centers (p. 6) about this software, please fill out the following and have the appropriate information ready.

Product	Name of Software	
	Version of Software	
PC	Model	
	CPU	
	OS	
	Memory	MB
	Available Hard Disk Space	MB

Please note that it may take some time to respond to your questions, depending on their subject matter.

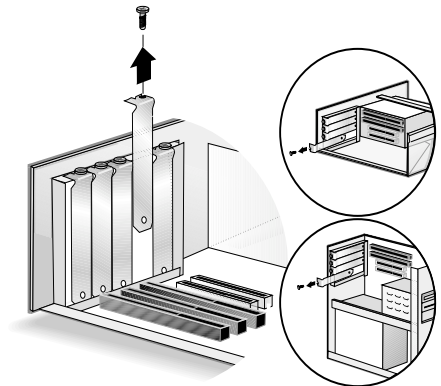
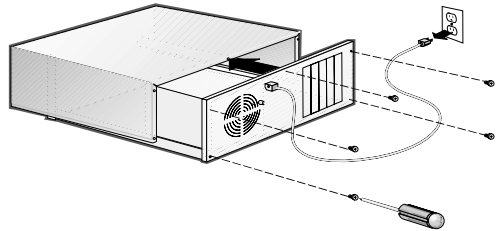
To install the DV Capture Board (AHA-8920 IEEE Host Adapter) in your computer so you can connect IEEE 1394 devices to your system, follow these steps:

1 Discharge any static electricity build-up before handling the DV Capture Board by touching a grounded metal object (like the exposed metal parts on the back of your computer).

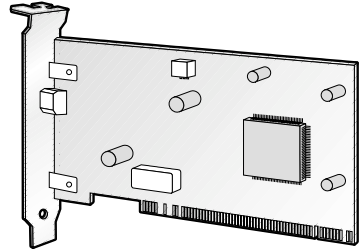
2 Turn OFF the power of the computer and disconnect the power cord.

3 Remove the cover from the computer. (Refer to your computer's manual.)

4 Locate an unused PCI expansion slot (typically white or ivory) and remove the expansion slot cover. Save the slot cover screw for use In Step 6.

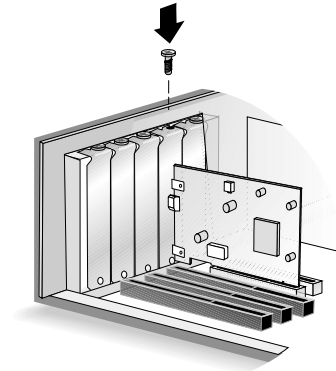


5 Remove the DV Capture Board from its antistatic packaging. Always handle the card by its edges.



IEEE 1394 DV Capture Board

6 Carefully insert the DV Capture Board into the PCI expansion slot until it is firmly seated, then replace the slot cover screw.



7 Replace your computer cover. The driver program (IEEE 1394 software) for the DV Capture Board must be installed on your computer before you can use the JVC Video Navigator.

Caution

- Computers may have vertical or horizontal PCI expansion slots. Refer to your computer manual to locate the PCI expansion slots.
- Do not place the DV Capture Board in an area where there is static electricity, such as on a carpet. Static electricity could damage the parts on the board.
- Do not touch the metal terminals with your bare hand.
- Do not give the board a strong shock because precise electronic parts are mounted on the board.
- Refer to the computer's instruction book before removing the board from your computer. The board or your computer may be damaged if the board is removed incorrectly.
- Do not spill water on the board.

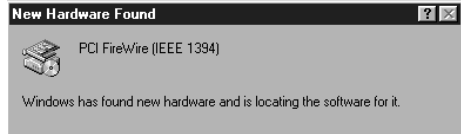
Caution

- In case the DV Capture Board has been installed with Windows® 95, these steps are not required.

FOR WINDOWS® 98

Before you use the DVC Capture Board, you must install the DV Capture Board drivers. If you have not done so already, install the DV Capture Board (see p. 8). Follow these steps to install the drivers. If you make a mistake during the install procedure, click the **Back** button and correct the mistake.

1 Turn on your computer. Put the included JVC CD-ROM in your CD-ROM drive. The New Hardware Found Window is displayed.
If the New Hardware Found Window is not displayed click the **Start** button on the Task Bar and select **Shut Down**. In the Shut Down Windows window select **Restart** the computer and click **OK**.



2 The Add New Hardware Wizard is displayed.
Click the **Next** button.



3 Make sure **Search for the best driver for your device. (Recommended)** is selected. Then click the **Next** button.



4 Make sure only the **CD-ROM** drive is selected. Then click the **Next** button.



5 Make sure **The updated driver (Recommended) Adaptec AHA- 8920 Host Adapter** is selected. Then click the **Next** button.



6 Click the **Next** button.



7 Click the **Finish** button.



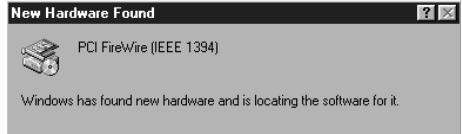
8 Restart your computer.

Before installing, confirm your Windows® 95 version. Double-click the system icon in the Control Panel and select General tab.

FOR WINDOWS® 95 VERSION 4.00.950B OR LATER

Before you use the DVC Capture Board, you must install the DV Capture Board drivers. If you have not done so already, install the DV Capture Board (See p. 8). Follow these steps to install the drivers:

- 1 Turn on your computer. Put the included JVC CD-ROM in your CD-ROM drive. The New Hardware Found window is displayed. The Next Hardware Found window is displayed.



- 2 The Update Device Driver Wizard is displayed. Click the **Next** button.



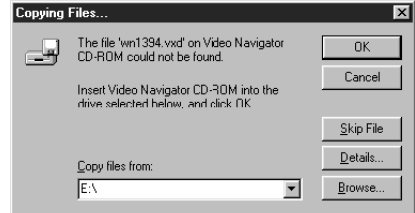
- 3 Click the **Finish** button.



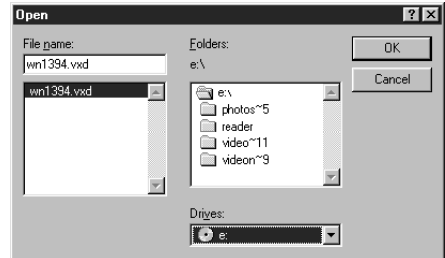
4 The Insert Disk window is displayed. Click the **OK** button.



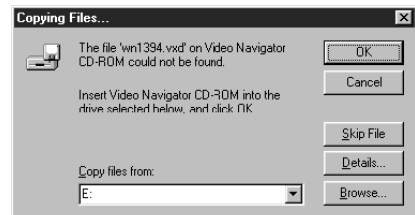
5 If you know the drive letter for your CD-ROM drive enter it in the box below **Copy files from:** and go to step 7. If you do not know the drive letter for your CD-ROM drive continue with the next step.



6 In the Open window click the arrow below **Drives:** and select your CD-ROM drive. Click **wn1394.inf** in the file list. Then click the **OK** button.



7 In the Copying Files... window click the **OK** button.



8 Restart your computer.

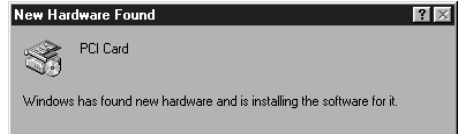
FOR WINDOWS® 95 VERSION 4.00.950 OR 4.00.950A

Before you use the DVC Capture Board, you must install the DV Capture Board drivers. If you have not done so already, install the DV Capture Board (See p. 8). Follow these steps to install the drivers:

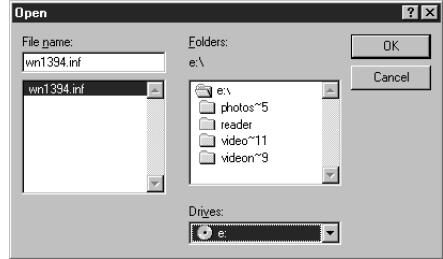
1 Turn on your computer. Put the included JVC CD-ROM in your CD-ROM drive. The New Hardware Found Window is displayed. The New Hardware Found Window is displayed.

2 In the New Hardware Found Window select **Driver from disk Provided by hardware manufacturer**. Then click the **OK** button.

3 If you know the drive letter for your CD-ROM drive enter it in the box below **Copy manufacturer's files from:** and go to step 5. If you do not know the driver letter for your CD-ROM drive continue with the next step.



4 In the Open window click the arrow below **Drives:** and select your CD-ROM drive. Click **wn1394.inf** in the file list. Then click the **OK** button.



5 In the Install From Disk window click the **OK** button.

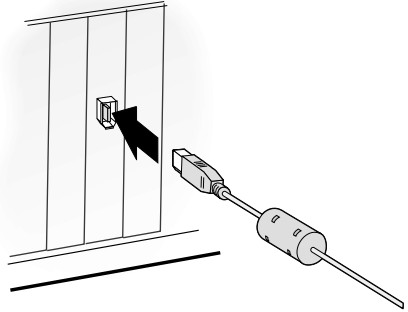


6 After the installation is complete we recommend you restart your computer.

CONNECTING DV DEVICE

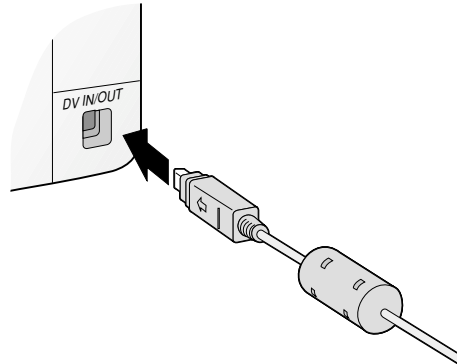
1 Plug the included DV cable's larger connector into the socket on the DV Capture Board.

- Confirm that the connector is securely plugged in.



2 Plug the DV cable's smaller connector into the camcorder's DV OUT/IN socket.

- Confirm that the connector is securely plugged in.
- Refer to your camcorder's instruction book to locate the camcorder's DV OUT/IN socket.



TROUBLESHOOTING FOR DV CAPTURE BOARD

If you are experiencing problems when using DV Capture Board, check the following items:

- The DV Capture Drivers are not installed.
- The PCI expansion slot must be a 5V bus master PCI expansion slot. Refer to your computer's manual and seat the DV Capture Board in the PCI expansion slot firmly.

FOR WINDOWS® 98 (P. 10~11)

• If the drivers did not install properly then use the following procedure:

- 1.** Double-click the **System** icon in the **Control Panel**.
- 2.** Select **Device Manager** tab.
- 3.** Click the + to the left of the **1394 Bus Controller** icon.
- 4.** Click the **Adaptec AHA-8920 Host Adapter** icon to select it.
Then click the **Remove** button.
- 5.** Click **OK** button.
- 6.** Restart your computer.
- 7.** Install the DV Capture Driver again. (See p.10-11)

MEMO

- About Windows® 98 basic operation, refer to the instruction book of Windows® 98 or your computer.

FOR WINDOWS® 95 (P. 12~15)

• If the drivers did not install properly then use the following procedure:

- 1.** Double-click the **System** icon in the **Control Panel**.
- 2.** Select **Device Manager** tab.
- 3.** Click the + to the left of the **1394 Bus Controller** icon.
- 4.** Double-click the **Adaptec AHA-8920 Host Adapter** icon, or the **PCI FireWire (IEEE 1394)** icon.
- 5.** Click **Driver** tab in the properties window.
- 6.** Click **Change Driver** button.
- 7.** Follow the prompts on the display.

About Windows® 95 basic operation, refer to the instructions of Windows® 95 or your computer.

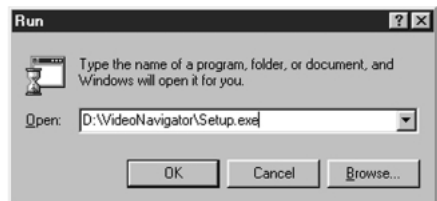
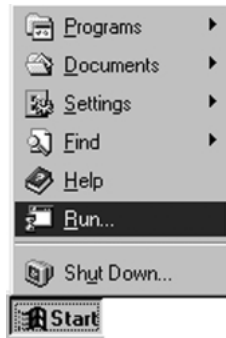
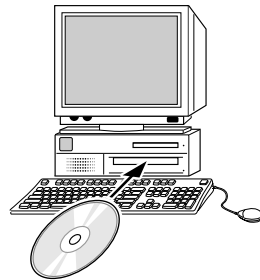
PREPARATION

- 1** Start Windows.
- 2** Close all open windows and toolbars. Close any icons shown on the task bar.
- 3** Confirm that programs are not displayed on the task bar.

INSTALLING VIDEO NAVIGATOR

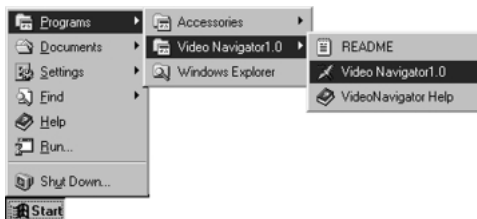
- 1** Insert the included CD-ROM into the CD-ROM drive.
- 2** Click **Start** menu and select **Run**.
- 3** Click **Browse** button in the **Run** window. In **Browse** window, select the **Setup.exe** icon in **VideoNavigator** folder in the CD-ROM drive and then **OK** button.
- 4** Confirm `\VideoNavigator\Setup.exe` is shown in the **Run** window. Then click the **OK** button.

- The install program for Video Navigator will start. Follow the prompts on the display.



PREPARATION

- 1 Insert your video cassette to your DV device.
- 2 Connect the DV cable to your computer and your digital camcorder. (See the separate booklet of DV Video Navigator, p. 8)
- 3 Set your digital camcorder to **Play** mode.
- 4 Turn on your computer and start up Windows® 95.
- 5 Click **Start** on the task bar.
- 6 Select **Program** and **VideoNavigator 1.0** and click **VideoNavigator 1.0**. Then Video Navigator will start up.



MEMO

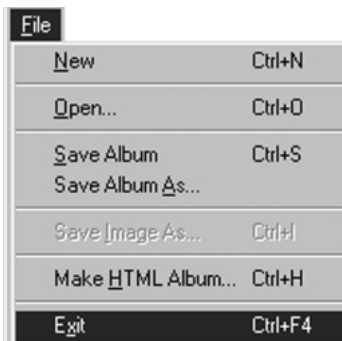
- Close all open windows and toolbars. Close any icons shown on the task bar.
- Turn off the function that starts up software automatically by time control. For example, screen saver, E-mail, communication software, viruses checker, scheduler and etc.
- Disable sharing for all shared resources, for example shared folders or shared printers.

Caution

- Do not remove the DV device and turn off the power of DV device while Video Navigator is running.

FINISHING VIDEO NAVIGATOR

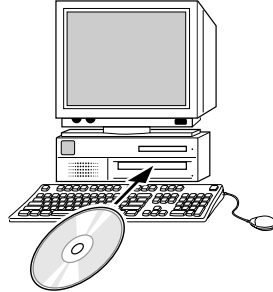
- 1 At **Index** window, click **File** menu and **Exit**.
Or click the closing button.
Video Navigator will finish.
- 2 Turn off the power of DV device.



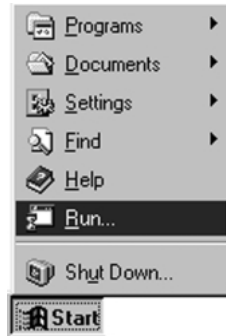
Using MGI PhotoSuite Starter Edition (SE), you can transform or enhance the pictures you take by altering colors, making collages, and more. Put your photos into posters, calendars and greeting cards. You'll see your photos in a whole new light. Put your photos into a picture frame or a screen saver, or into a school science report, or wherever you'd like them to be. Surprise yourself, impress your friends, and create your own exciting new photo collection!

INSTALLING PHOTOSUITE SE

1 Insert the included CD-ROM into the CD-ROM drive.

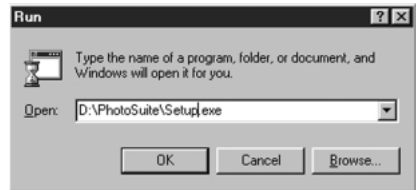


2 Click **Start** menu and select **Run**.



3 Click **Browse** button in the **Run** window.

4 In **Browse** window, select the CD-ROM icon in **Look in:** Column. In the list column, double-click **PhotoSuite** folder and **Setup** icon.



5 Confirm **\PhotoSuite\Setup.exe** is shown in the **Run** window. Then click the **OK** button.

- The install program for PhotoSuite will start. Follow the prompts on the display.



Presto! VideoWorks enables you to manage and edit in detail on your computer screen video sequences as well as sounds (AVI files), or video/audio fragments captured from video devices such as a VCR, a laser disc player, a Camcorder, etc. You can combine several video sequences with significant order, create smooth transition effects, add various video effects, and render moving titles to compose a creation of art.

INSTALLING VIDEOWORKS

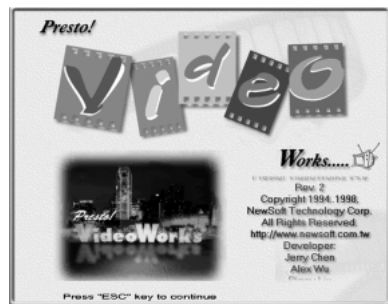
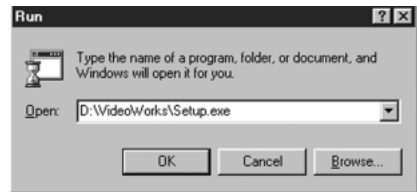
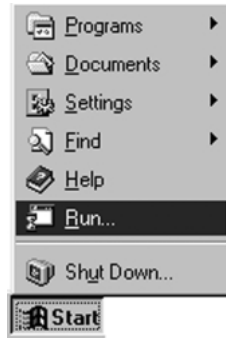
- 1 Insert the included CD-ROM into the CD-ROM drive.

- 2 Click **Start** menu and select **Run**.

- 3 Click **Browse** button in the **Run** window.

- 4 In **Browse** window, select the CD-ROM icon in **Look in:** Column. In the list column, double-click **VideoWorks** folder and **Setup** icon.

- 5 Confirm \VideoWorks\Setup.exe is shown in the **Run** window. Then click the **OK** button.



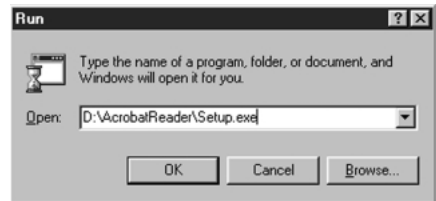
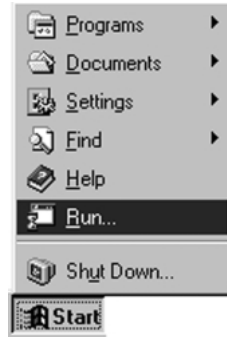
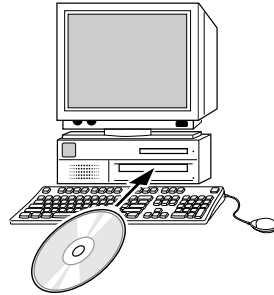
Caution

- VideoWorks requires that the Windows Multimedia components are installed. Use the Add/Remove Programs icon in the Control Panel to install the Multimedia components. Check that Multimedia is selected in the Windows Setup tab.
- The installation of the Microsoft ActiveMovie or DirectX components may cause your computer to lockup. This occurs after the installation is complete when you are prompted to restart your computer. If your computer locks up after you choose to restart, press the **CTRL+ALT+DEL** keys to open the Close Program window. Select **Microsoft ActiveMovie** or **DirectX Setup** and click the **End Task** button.

INSTALLING ADOBE ADOBE READER

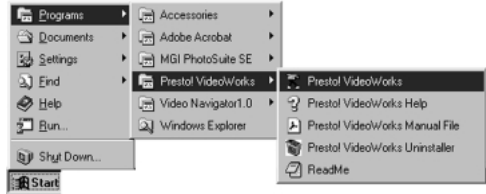
The VideoWorks Manual File is supplied as acrobat data file. In case it cannot be opened, you should install Adobe Acrobat Reader.

- 1 Insert the included CD-ROM into the CD-ROM drive.
- 2 Click **Start** menu and select **Run**.
- 3 Click **Browse** button in the **Run** window.
- 4 In **Browse** window, select the CD-ROM icon in **Look in:** Column. In the list column, double-click **AcrobatReader** folder and **Setup** icon.
- 5 Confirm `\AcrobatReader\Setup.exe` is shown in the **Run** window. Then click the **OK** button.
 - The install program for Acrobat Reader will start. Follow the prompts on the display.



STARTING UP VIDEOWORKS

1 Click **Start** on the task bar.



2 Select **Program** and **Presto! VideoWorks** and click **Presto! VideoWorks**.

Then VideoWorks will start up.

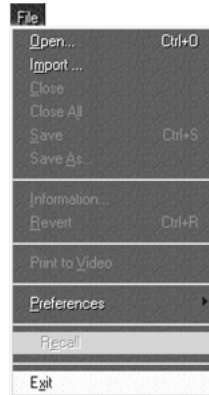
MEMO

- Close all open windows and toolbars. Close any icons shown on the task bar.
- Turn off the function that starts up software automatically by time control. For example for screen saver, E-mail, communication software, viruses checker, scheduler and etc.
- Disable sharing for all shared resources, for example shared folders or shared printers

FINISHING VIDEOWORKS

1 Click **File** menu and **Exit**.

- Or click the Exit button.
- For saving or other operation, refer to **Presto! VideoWorks ManualFile** produced as PDF file.
- VideoWorks will finish.



VideoWorks makes an action file from images captured by Video Navigator. The action movie can be adjusted to smooth action by morph function. You can view the action file as like a movie because the snapshots related with time are connected continuously and displayed with frame-playback.

PREPARATION

- You should save image files as JPEG or Bitmap format when saving them with Video Navigator.
- Start up VideoWorks. (See p. 23)

Caution

- For images importing to VideoWorks, you should save them with the default file name (jvn01.jpg). They are saved with the filenames having serial numbers from jvn01.jpg. To import them easily, you had better make a new folder or specify an existing folder when saving them with Video Navigator.
- The file names must contain serial number from 01.

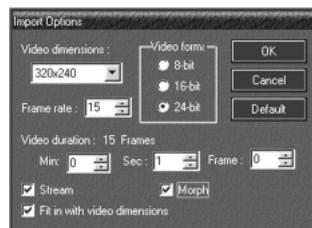
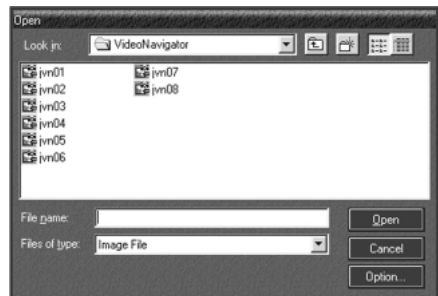
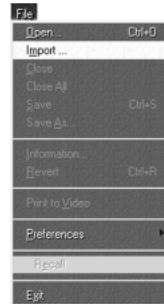
1 In the main window of VideoWorks, click **File** menu and **Import**.

2 In **Open** window, select **Image File** in **Files of type** column. And click **Option** button.

3 Check **Stream** button and **Fit in with video dimensions** button in **Import Options** Window.

- If necessary, check **Morph** button.
- See p. 25 MEMO.

4 Click **OK** button.



5 Click one of the image files in **Open** window.

6 Click **Open** button.

- The image files in same folder are imported and action movie is made with them.
- Media Viewer window is displayed.
- Processing time for importing depends on the settings of **Import Options** window. (See step 3.)

7 Click the play button on the Media Viewer window.



MEMO

• Video Album

You can make video-album with images not continuing as travel snapshots. The images are switched at constant duration automatically as slide-show.

Example: Displaying 10 images and 5 seconds each image.

In **Import Options** window, input 1 (frame / sec) into **Frame rate** column and 50 (seconds) into **Sec:** column. (See step 3.)

The memory size becomes minimum by inputing 1 into **Frame rate** column.

Video duration is whole displaying duration. $10 \text{ (images)} \times 5 \text{ (seconds)} = 50 \text{ (seconds)}$

• Animation for Internet

In many cases, animation on Internet web is set to 160×120 for video dimensions and 15 for frame rate. By using Video Navigator, you can capture and save the suitable images by setting preferences for Capture (interval: 2 frames) and preferences for Save Image (160×120).

In detail, refer to INSTRUCTIONS book in same pack.

For 99 images, you had better set Video duration in **Import Options** window to 6 seconds 9 frames. (15 images is equal to 1 second.) If it is set to longer duration, the animation movie becomes slower.



Free Manuals Download Website

<http://myh66.com>

<http://usermanuals.us>

<http://www.somanuals.com>

<http://www.4manuals.cc>

<http://www.manual-lib.com>

<http://www.404manual.com>

<http://www.luxmanual.com>

<http://aubethermostatmanual.com>

Golf course search by state

<http://golfingnear.com>

Email search by domain

<http://emailbydomain.com>

Auto manuals search

<http://auto.somanuals.com>

TV manuals search

<http://tv.somanuals.com>