

back cover

Limited Warranty

IN NO EVENT SHALL THE DIRECT VENDORS LIABILITY FOR DIRECT, INDIRECT, SPECIAL, INCIDENTAL OR CONSEQUENTIAL DAMAGES RESULTING FROM THE USE OF THE PRODUCT, OR ITS DOCUMENTATION EXCEED THE PRICE PAID FOR THE PRODUCT.

The direct vendor makes no warranty or representation, expressed, implied, or statutory with respect to the contents or use of this documentation, and especially disclaims its quality, performance, merchantability, or fitness for any particular purpose.

The direct vendor also reserves the right to revise or update the device or documentation without obligation to notify any individual or entity of such revisions, or updates. For further inquires please contact your direct vendor.

Contact

Toll Free 866-840GEAR (USA)
Phone: 949-404-7162
23 Hazelle
Irvine, CA 92618 USA
www.iogear.com
support@iogear.com

FRONT

About Us



FUN
IOGEAR offers connectivity solutions that are innovative, fun, and useful, helping people enjoy daily living via high technology products.

GREEN
IOGEAR is an environmentally conscious company that emphasizes the importance of conserving natural resources. The use of our technology solutions helps reduce electronic waste.

HEALTH
IOGEAR supports healthy and fit lifestyles. By integrating products with the latest scientific developments, IOGEAR's solutions enhance the life of employees.

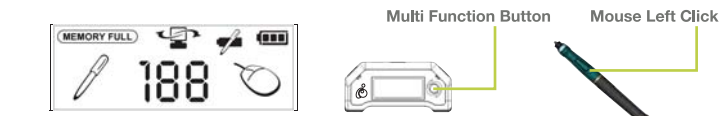
© 2007 IOGEAR, INC.

Quick Start Guide

Mobile Digital Scribe

© 2007 IOGEAR, INC.

Welcome



Description	On when	Off When	Blinks When
Mobile Digital Scribe is Connected	Unit is connected to PC	Unit is NOT connected to PC	Data is uploaded to PC
MEMORY FULL	Mobile Digital Scribe Unit Memory is Full	Less than 90% capacity used	Never
Pen Low Battery	Low Pen Battery	Pen Battery good	Low Pen Battery
Base Unit Low Battery	Full	Unit is Off	Charging
Note Mode	Pen down/Pen move	Mouse Mode	Pen down/Pen move
Mouse Mode	Pen down/Pen move	Pen Mode	Pen down/Pen move
188	Number of saved pages in memory	Always	Unit is Off
			Memory Full Or Error

Installation

Start Here!

Installing/Replacing Pen & Receiver Batteries:

1. Remove the battery compartment cover.



2. Install four SR614 batteries, with the positive poles facing up as shown (Use the enclosed SR614 batteries).
3. Replace battery compartment cover.
4. Charge the base at least 30 min before first using it.

Plug the USB cable into the base and the available USB port of the computer. It will start charging. Digital Scribe can work uninterruptedly during charging as a wired version.

Batteries may be safely disposed of in normal household waste. Contact your local government for disposal or recycling practices in your area. Caution: Risk of explosion if battery is replaced by an incorrect type. Note: Lifetime of the batteries may vary and cannot be guaranteed. Stopped batteries are good for initial use only. To continuously charge the mouse via the USB cable, your computer must be turned ON and in standby mode.

Installing/Replacing Ink Refill

The top of the pen cap also functions as an ink refill extractor. NOTE: Make sure you use a refill that is similar to the original standard refill (0.72mm long X 2.33mm diameter).

To replace the ink refill:

1. Detach the cap from the digital pen.
2. Place the ink refill in the middle of the extractor. Hold the pen firmly, and apply pressure with the extractor against it.

3. Pull the used Refill out.

To insert a new refill:

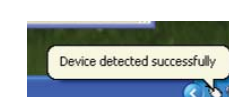
1. Slide the new refill into the tip of the pen.
2. Gently press the new refill until it is lodged securely in place.

Software Installation

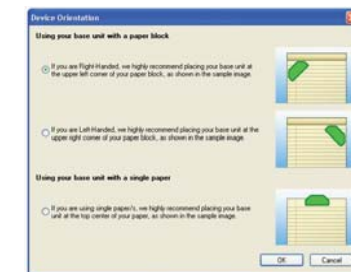
Before first using your IOGEAR Mobile Digital Scribe, please make sure you have installed the driver software from the included CD. The first CD contains the Mobile Digital Scribe software and is required. The second CD contains the MyScript Notes Lite CD software and is only needed if you wish to convert your handwritten notes to text for use in email or a word processor. Simply insert the Mobile Digital Scribe CD first and follow the wizard's instructions, then do the same with the MyScript CD.

Once you have finished installing, open the Mobile Digital Scribe software from the icon on your desktop. Insert the USB plug on the wireless receiver into an available port in your computer or a USB hub. An alert bubble should pop up informing you that the device has been detected successfully.

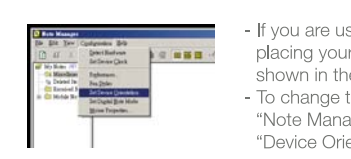
Hardware Installation



Plug the USB cable into the base and the available USB port of the computer. move the base to an appropriate length to reach the top of your writing area. Using one of the three clips, firmly secure the receiver to the most convenient position at the top of the page and confirm your choice in the Mobile Digital Scribe software.



- If you are Right-Handed, we highly recommend placing your base unit at the upper left corner of your paper, as shown in the sample image.
- If you are Left-Handed, we highly recommend placing your base unit at the upper right corner of your paper, as shown in the sample image.



- If you are using single paper/s, we highly recommend placing your base unit at the top of your paper, as shown in the sample image.
- To change the base orientation, please go into the "Note Manager" click on "Configuration" and select "Device Orientation".

Mouse Mode

Your mobile unit will initially be in mouse mode when first connect to the PC. In this mode tapping the pen in the writing area or pressing the button on the side of the pen will act like a single mouse click. Pressing and holding the pen down for a moment will act like a right mouse click. In mouse mode, we recommend to replace the ink refill to stylus, please follow the Installation/ Replacing Ink Refill Section to change ink refill to stylus.

Mobile Mode

When you are ready to create handwritten notes, switch your Mobile unit into Note mode. You can do this by either pressing the Multi Function button on the top of the base unit, or tapping the pen once in the small area directly in front of the unit. (Virtual box below the unit, see image). The appropriate LCD icon will be on:

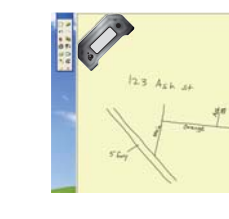
Mouse Mode:



Note Mode:

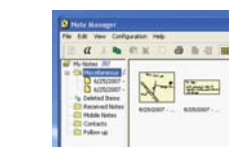


You will see an alert bubble whenever you successfully change from Mouse to Note mode or vice versa.



Creating Notes

Drawing with your Mobile Digital Scribe while in Note mode will create a new note automatically if you do not have one open. The pen is very accurate, so there is no need to watch the screen while writing. You can change the size or color of the on-screen pen at any time using the Writing toolbar to the left.



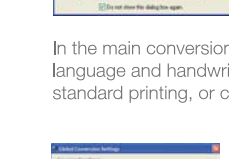
When you have finished with your note, use the other toolbar buttons to save your note to a picture file, email it, print it, translate the file to Word, or simply save it to your Note Manager window for later use.



Handwriting Recognition
If you have installed the MyScript Notes Lite software, you can convert your printed or handwritten notes into text for easy use in a word document or email. When MyScript is installed, the Convert to Text button on the toolbar is enabled (). Click it to convert the currently active note.



When first use you will be required to enter your registration key. You can find this key on the envelope of the MyScript installer CD. Check the box at the bottom of the window to avoid being asked again.

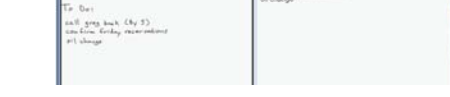


In the main conversion window you will only need to choose your preferred language and handwriting type. Select whether you are using capital block letters, standard printing, or cursive handwriting and click OK.



The converted text will then appear on the right pane. Make corrections if necessary, then copy the text or use the toolbar buttons to send your converted note to an email, Word document, or Notepad.

Advanced Options



Further information on both the Mobile Digital Scribe and MyScript software is available from the start menu when these programs are installed. For help with the more advanced features of these programs please read the manuals installed in the start menu.

Creating Notes While in Mobile Mode

While in Mobile mode, you can store all your notes into the Mobile memory. To do so, simply turn ON the unit and start taking notes. To start a new file turn page, simply press the Top button on your base unit.

Uploading your saved notes into your PC

Once you are finished taking Notes in Mobile mode, uploading your notes from your base unit to the PC is very simple.
1. Make sure your Mobile Digital Scribe software application is running.
2. Connect your mobile base unit to your USB port.
3. The Mobile Digital Scribe software application will detect your unit and will prompt you to upload your files.

Avoid interference while using regular mouse:

When the pen is not in use it enters Sleep Mode after one minute. It is recommended that while not in use, the pen is placed as shown, to avoid interfering with regular operation.



Using your Pen in "Mouse Mode"

In Mouse mode, your Digital pen will behave as a mouse. Your pen will have the following functionality:

- To move your mouse cursor you can hover with the pen. To start hovering you can press the side button or tap the pen on the paper. The pen will now hover even with no press for about 30 seconds.
- To Click on object, point your mouse cursor on that object. Now tap the pen on the paper or click the side button.
- To Double-Click an object, point your mouse cursor on that object. Now tap the pen twice on the paper or click the side button twice.
- To Right-Click an object, point your mouse cursor on that object. Now press the tip of the pen a bit longer on the paper. A special Right-Click cursor will appear. Lift the pen from the paper, and the context menu (Right-Click menu) appears.

BACK

Free Manuals Download Website

<http://myh66.com>

<http://usermanuals.us>

<http://www.somanuals.com>

<http://www.4manuals.cc>

<http://www.manual-lib.com>

<http://www.404manual.com>

<http://www.luxmanual.com>

<http://aubethermostatmanual.com>

Golf course search by state

<http://golfingnear.com>

Email search by domain

<http://emailbydomain.com>

Auto manuals search

<http://auto.somanuals.com>

TV manuals search

<http://tv.somanuals.com>