

Dell UltraSharp UP2718Q Dell Display Manager User's Guide

Model: UP2718Q
Regulatory model: UP2718Qt





NOTE: A NOTE indicates important information that helps you make better use of your computer.

Copyright © 2017 Dell Inc. All rights reserved. This product is protected by U.S. and international copyright and intellectual property laws.

Dell™ and the Dell logo are trademarks of Dell Inc. in the United States and/or other jurisdictions. All other marks and names mentioned herein may be trademarks of their respective companies.

Contents

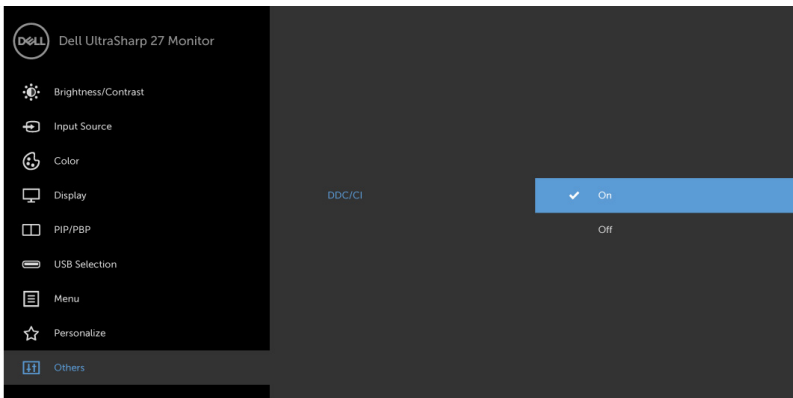
Overview	4
Using the Quick Settings Dialog	5
Setting Basic Display Functions	6
Assigning Preset Modes to Applications	7
Applying Energy Conservation Features	8
Organizing Windows with Easy Arrange	9
Managing Multiple Video Inputs	11
Troubleshooting	17

Overview

Dell Display Manager is a Windows application used to manage a monitor or a group of monitors. It allows manual adjustment of the displayed image, assignment of automatic settings, energy management, window organization, image rotation, and other features on select Dell monitors. Once installed, Dell display manager runs each time the computer starts and its icon is placed in the notification tray. Information about monitors connected to the computer is displayed when you hover the mouse pointer over the notification tray icon.

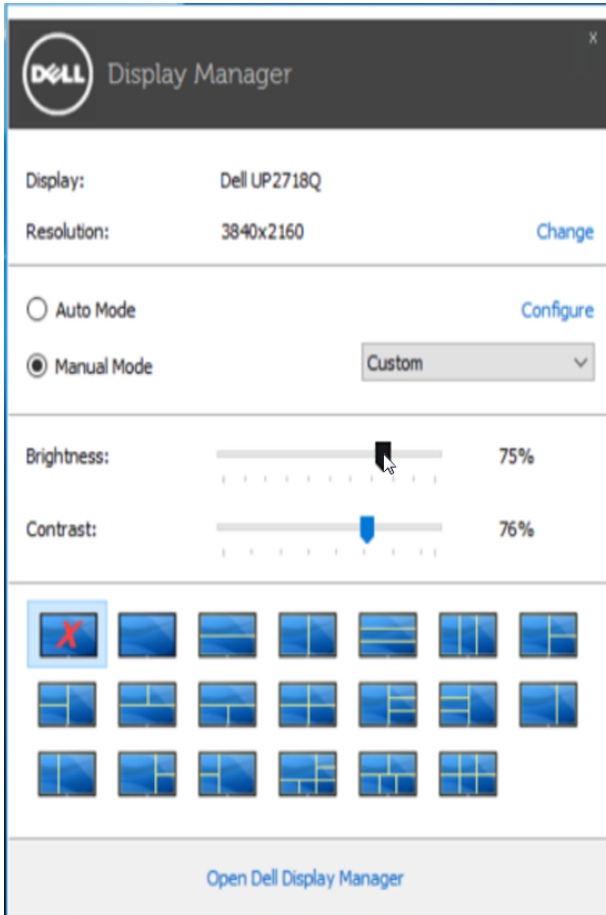


NOTE: Dell Display Manager needs to use DDC/CI channel to communicate with your monitor. Please make sure DDC/CI is enabled in the menu as below.



Using the Quick Settings Dialog

Clicking Dell Display Manager's notification tray icon opens the **Quick Settings** dialog box. When more than one supported Dell model is connected to the system, a specific target monitor can be selected using the menu provided. The **Quick Settings** dialog box allows convenient adjustment of the monitor's brightness and contrast levels. You can manually select a preset mode or enable automatic selection of a preset mode depending on the active application.

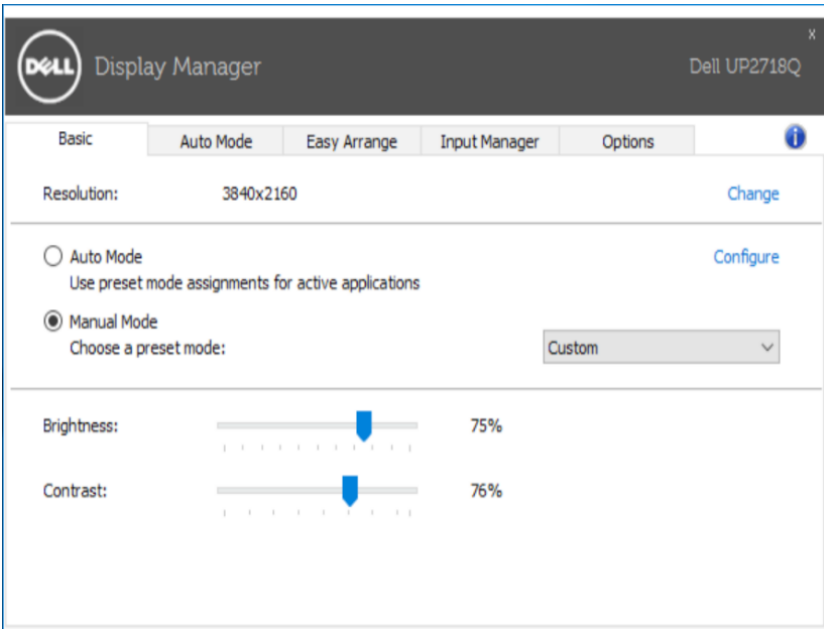


The **Quick Settings** dialog box also provides access to Dell display manager's advanced user interface, which is used to adjust basic functions, configure Auto Mode, and access other features.

Setting Basic Display Functions

A preset mode for the selected monitor can be manually applied using the menu on the **Basic** tab. Alternatively, Auto Mode can be enabled. Auto Mode causes your preferred preset mode to be applied automatically when specific applications are active. A message momentarily appears on the screen showing the selected preset mode.


The selected monitor's brightness and contrast can also be directly adjusted from the **Basic** tab.



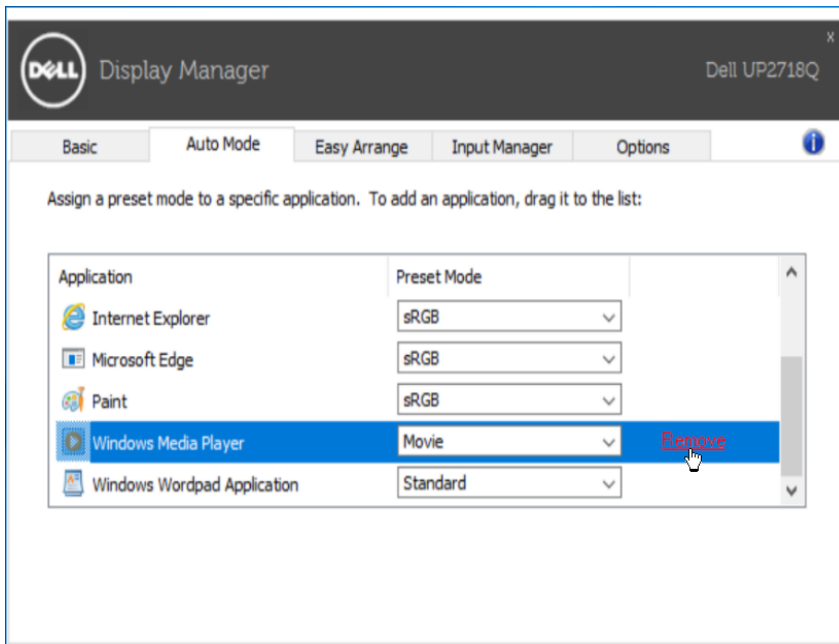
Assigning Preset Modes to Applications

The **Auto Mode** tab allows you to associate a specific preset mode with a specific application, and apply it automatically. When Auto Mode is enabled, Dell Display Manager automatically switches to the corresponding preset mode whenever the associated application is activated. The preset mode assigned to a particular application may be the same on each connected monitor, or it can vary from one monitor to the next.

Dell Display Manager is pre-configured for many popular applications. To add a new application to the assignment list, simply drag the application from the desktop, Windows Start Menu, or elsewhere, and drop it onto the current list.

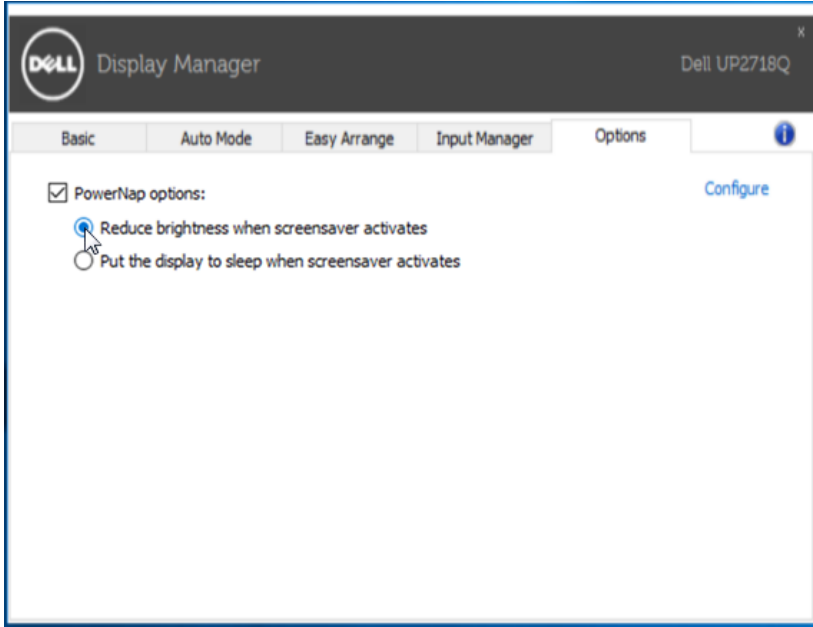
 **NOTE:** Preset mode assignments targeting batch files, scripts, and loaders, as well as non-executable files such as zip archives or packed files, are not supported and will be ineffective.

In addition an option can be enabled that activates the **Game** preset mode when a Direct3D application is run in full-screen mode. To override this behavior for individual game titles, add them to the assignment list with a different Preset Mode. Applications present in the assignment list take priority over the general Direct3D setting.



Applying Energy Conservation Features

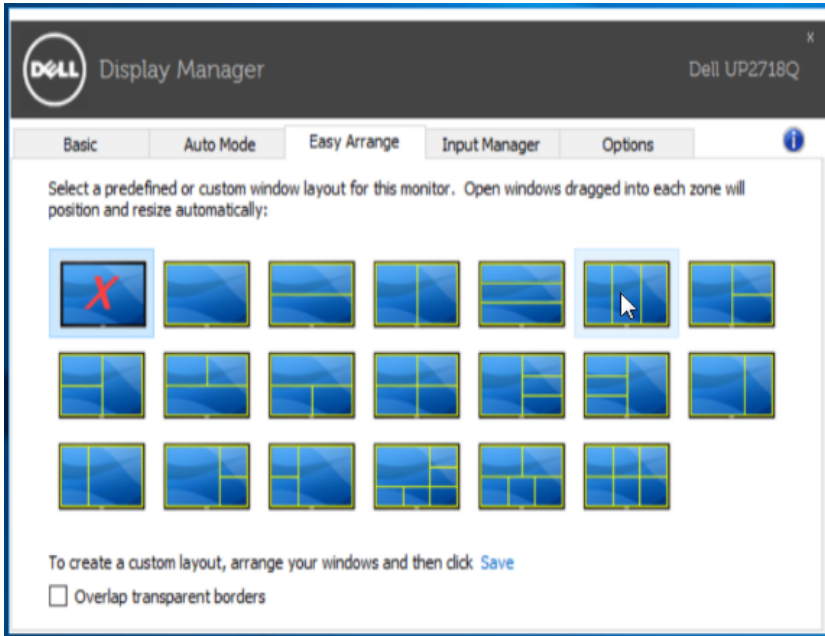
On supported Dell models, an **Options** tab is available to provide PowerNap energy conservation options. When the screensaver activates, the monitor's Brightness can automatically be set to minimum level or the monitor can be put to sleep in order to save additional power.



Organizing Windows with Easy Arrange

Some Dell models feature Easy Arrange, which allows the selected monitor's desktop to be organized into various predefined or custom window layouts. When Easy Arrange is enabled, windows can easily be repositioned and resized automatically to fill specific regions within a window layout.

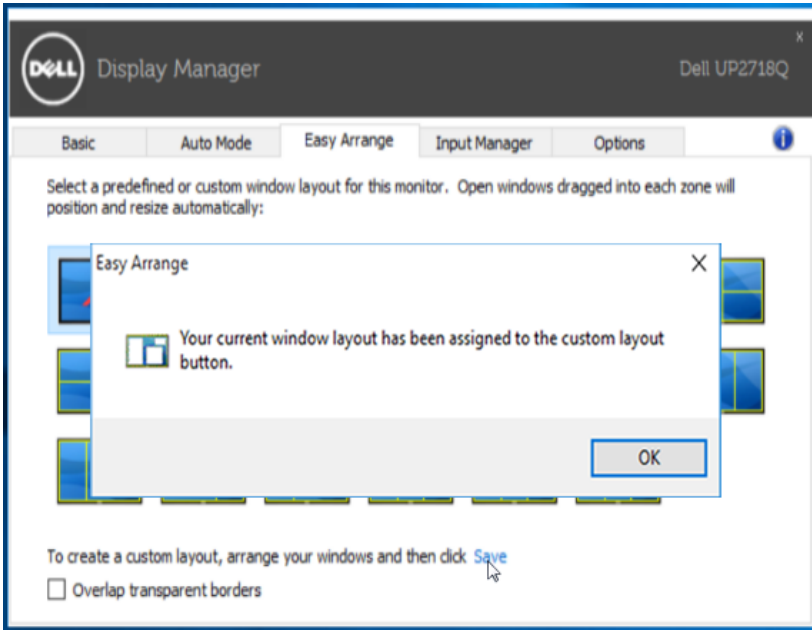
To get started with **Easy Arrange**, choose a target monitor and select one of the predefined layouts. The regions for that layout are displayed momentarily on the monitor. Next, drag an open window across the monitor. While the window is being dragged, the current window layout is displayed and an active region gets highlighted as the window passes over it. At any time, drop the window into the active region to place the window in that region.



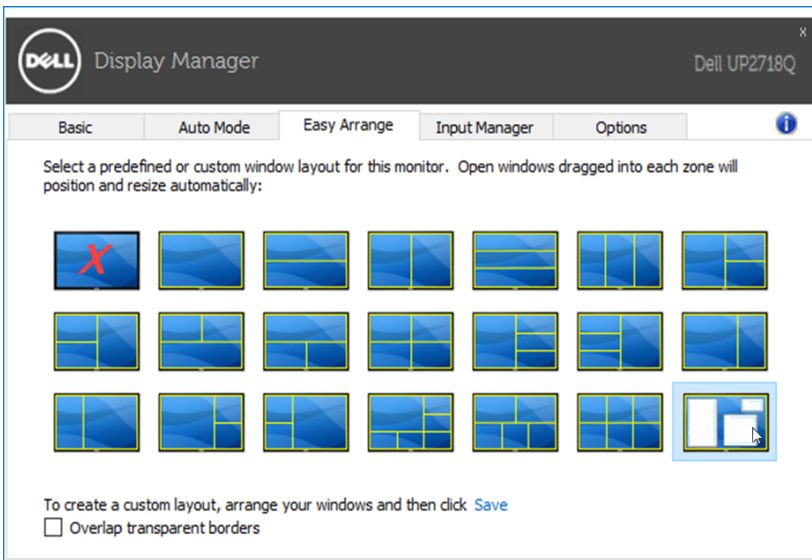
To create a custom window layout, size and position the windows (maximum 10) on the desktop and then click the **Save** link in **Easy Arrange**. The size and position of the windows is saved as a custom layout and the custom layout icon is created.



NOTE: This option does not save or remember the applications that are open. Only the size and position of the windows is saved.



To use the custom layout, select the custom layout icon. To delete the currently saved custom layout, close all windows on the desktop and then click the **Save** link in **Easy Arrange**.

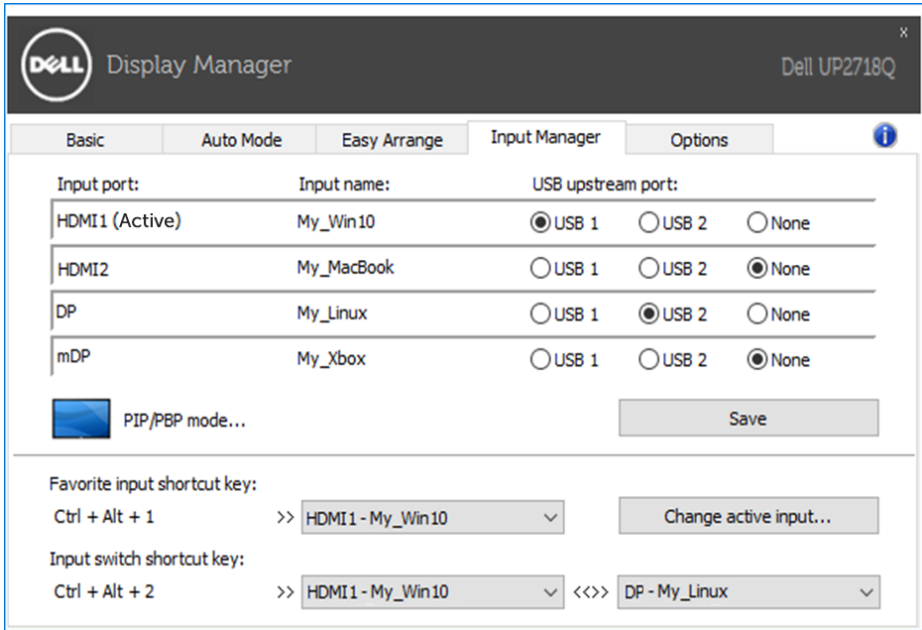


Managing Multiple Video Inputs

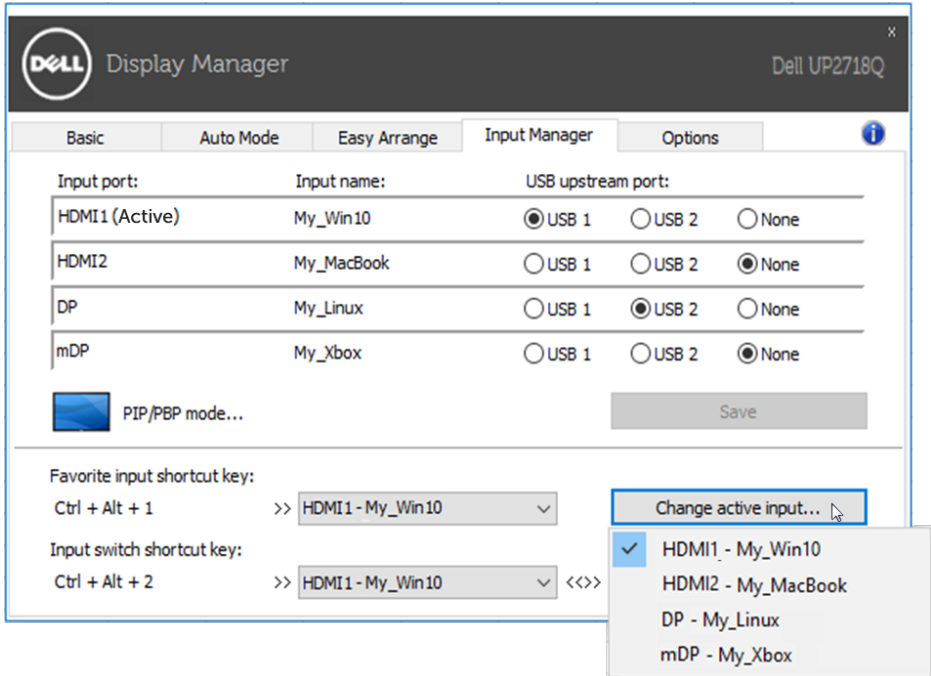
The **Input Manager** tab provides convenient ways for you to manage multiple video inputs connected to your Dell monitor. It makes it very easy to switch between inputs while you work with multiple computers.

All video input ports available to your monitor are listed. You can give each input a name as you like. Please save your changes after editing.

You can define a shortcut key to quickly switch to your favorite input and another shortcut key to quickly switch between two inputs if you often work between them.



You can use the dropdown list to switch to any input source.



NOTE: DDM communicates with your monitor even when the monitor is displaying video from another computer. You can install DDM on the PC you frequently use and control input switching from it. You may also install DDM on other PCs connected to the monitor.

Click the **PIP/PBP mode** selection button to select a PIP/PBP configuration.



Input port:	Input name:	USB upstream port:		
HDMI1 (Active)	My_Win10	<input checked="" type="radio"/> USB 1	<input type="radio"/> USB 2	<input type="radio"/> None
HDMI2	My_MacBook	<input type="radio"/> USB 1	<input type="radio"/> USB 2	<input checked="" type="radio"/> None
DP	My_Linux	<input type="radio"/> USB 1	<input checked="" type="radio"/> USB 2	<input type="radio"/> None
mDP	My_Xbox	<input type="radio"/> USB 1	<input type="radio"/> USB 2	<input checked="" type="radio"/> None

PIP/PBP mode... Save

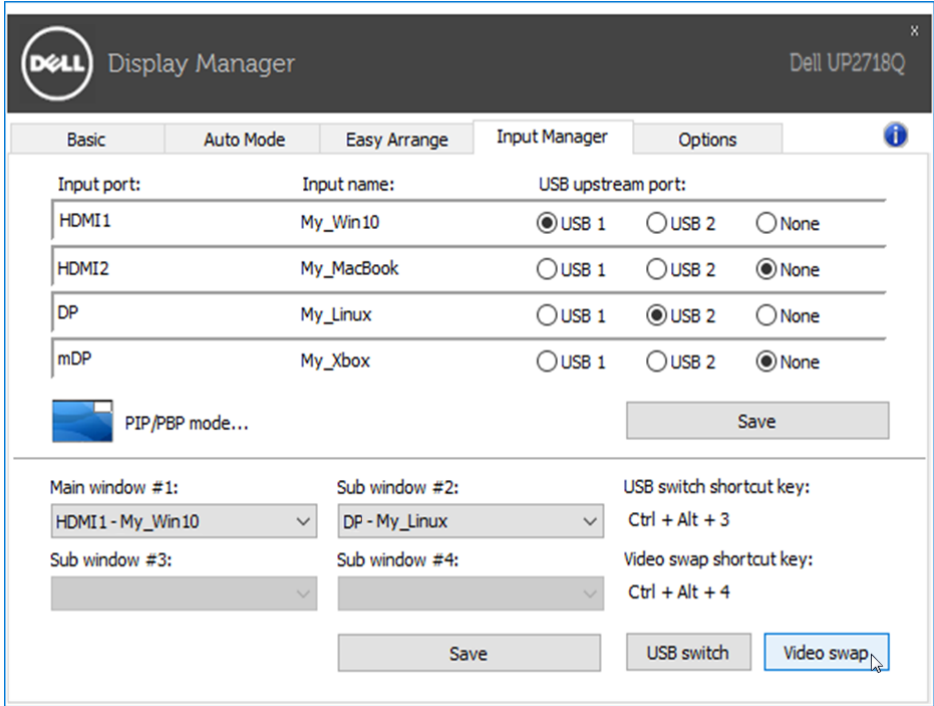
Favorite input shortcut key:
Ctrl + Alt + 1 >> HDMI1 - My_Win10 Change active input...

Input switch shortcut key:
Ctrl + Alt + 2 >> HDMI1 - My_Win10 <<>> DP - My_Linux

You can select video inputs for your main window and sub window. Please save your change after your selection.

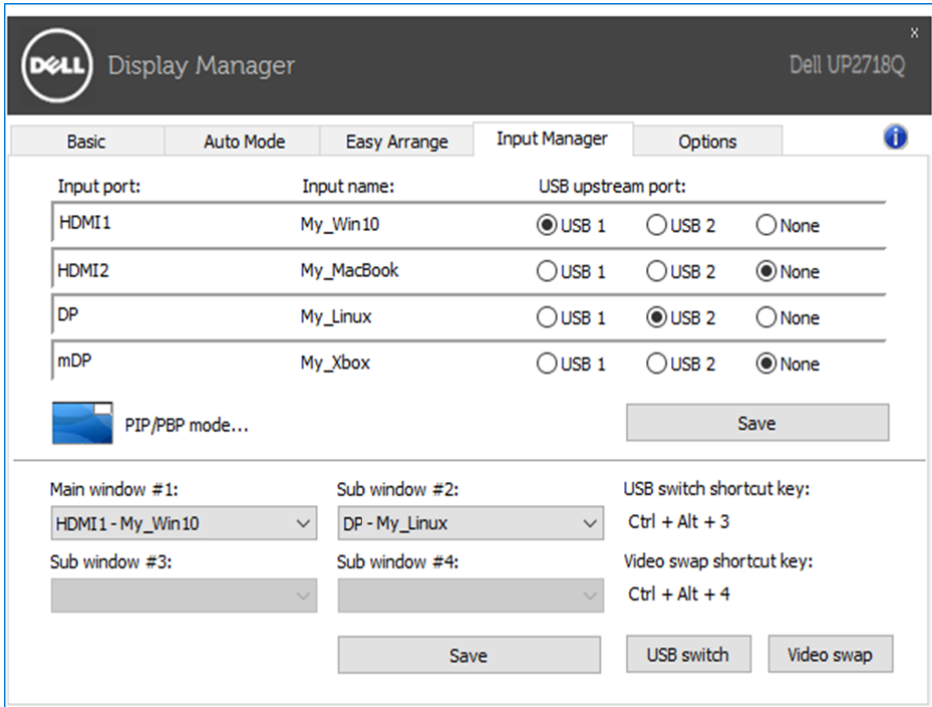
You can define a shortcut key to quickly swap the video inputs between main window and sub window.

Click **Video swap** button or use the defined **Video swap shortcut key** to swap the video inputs between main window and sub window.



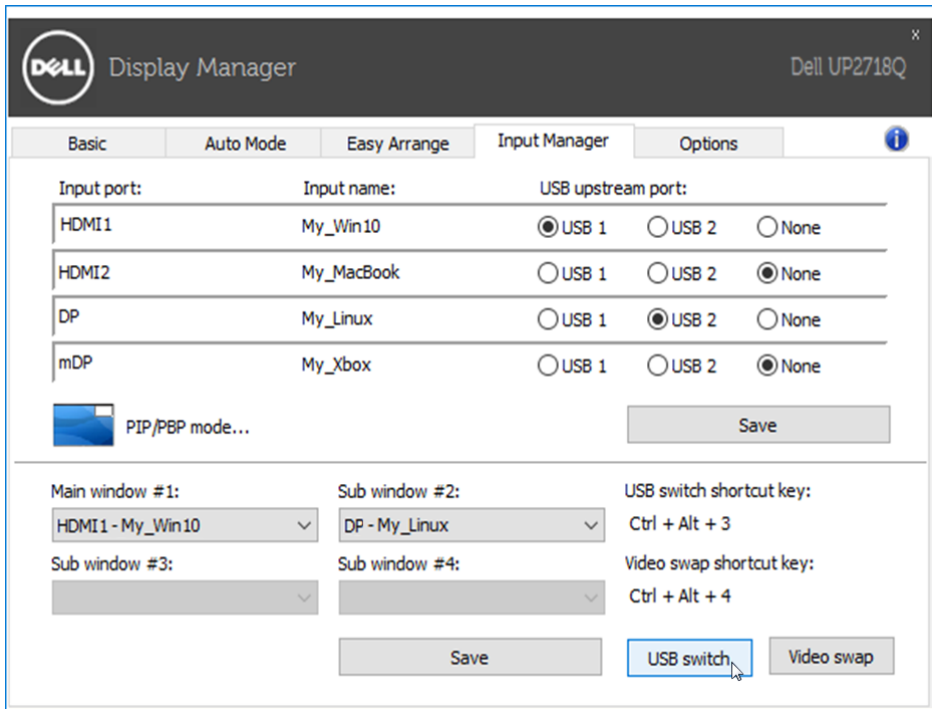
You can assign a USB upstream port with your video input. The assigned USB upstream port will be connected to the computer when its video is showing on the monitor.

It is particularly useful when you share mouse or keyboard which is connected to the monitor between two computers. You can define a shortcut key to quickly switch the device between the two computers.




 **NOTE:** Make sure you have assigned a USB upstream port for each of the two computers.

When PIP/PBP is on, if you share a device (e.g., a mouse) between the two computers, you can click **USB switch** button or use the defined **USB switch shortcut key** to quickly switch the device between the two computers.

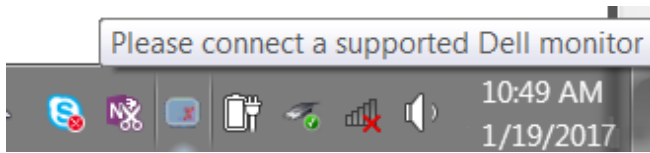


 **NOTE:** Make sure you have assigned a USB upstream port for each of the two computers.

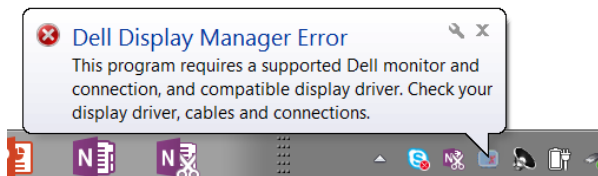
 **NOTE:** Make sure the USB device is properly stopped before you switch it to another computer. Fail to do so may cause problems such as data corruption on a thumb drive.

Troubleshooting

If DDM cannot work with your monitor, DDM will show below icon in your notification tray.



Click on the icon and DDM shows a more detailed error message.



Please note that DDM only works with Dell-branded monitors. DDM does not support monitors from other manufacturers.

If DDM is unable to detect and/or communicate with a supported Dell monitor, please take below actions to troubleshoot:

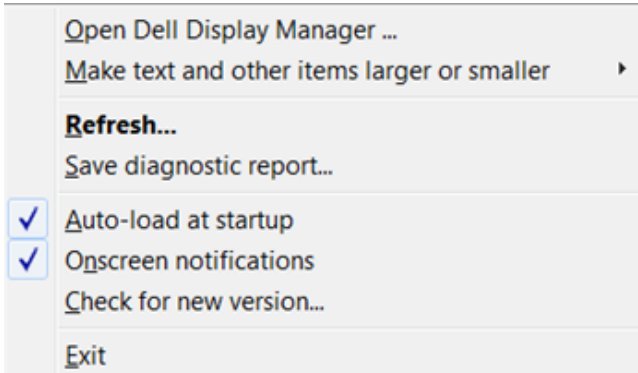
1. Make sure the video cable is properly connected to your monitor and your PC: especially the connectors should be firmly inserted into position.
2. Check the monitor OSD to ensure DDC/CI is enabled.
3. Make sure you have the correct and latest display driver from the graphics vendor (Intel, AMD, NVidia, etc.). Display driver is often the cause of DDM failure.
4. Remove any docking stations or cable extenders or converters between the monitor and the graphics port. Some low-cost extenders, hubs or converters may not support DDC/CI properly and can fail DDM. Update the driver of such device if the latest version is available.
5. Restart your system.

DDM may not work with below monitors:

- Dell monitor models earlier than year 2013 and D-series of Dell monitors. You can refer to Dell Product Support websites for more information
- Gaming monitors using Nvidia-based G-sync technology
- Virtual and wireless displays do not support DDC/CI
- In some early models of DP 1.2 monitors, it may be necessary to disable MST/DP 1.2 using the monitor OSD

If your PC is connected to the Internet, you will be prompted with a message when a newer version of DDM application is available. It is recommended to download and install the latest DDM application.

You may also check for new version by right clicking on DDM icon while pressing and holding 'shift' key.



Free Manuals Download Website

<http://myh66.com>

<http://usermanuals.us>

<http://www.somanuals.com>

<http://www.4manuals.cc>

<http://www.manual-lib.com>

<http://www.404manual.com>

<http://www.luxmanual.com>

<http://aubethermostatmanual.com>

Golf course search by state

<http://golfingnear.com>

Email search by domain

<http://emailbydomain.com>

Auto manuals search

<http://auto.somanuals.com>

TV manuals search

<http://tv.somanuals.com>